

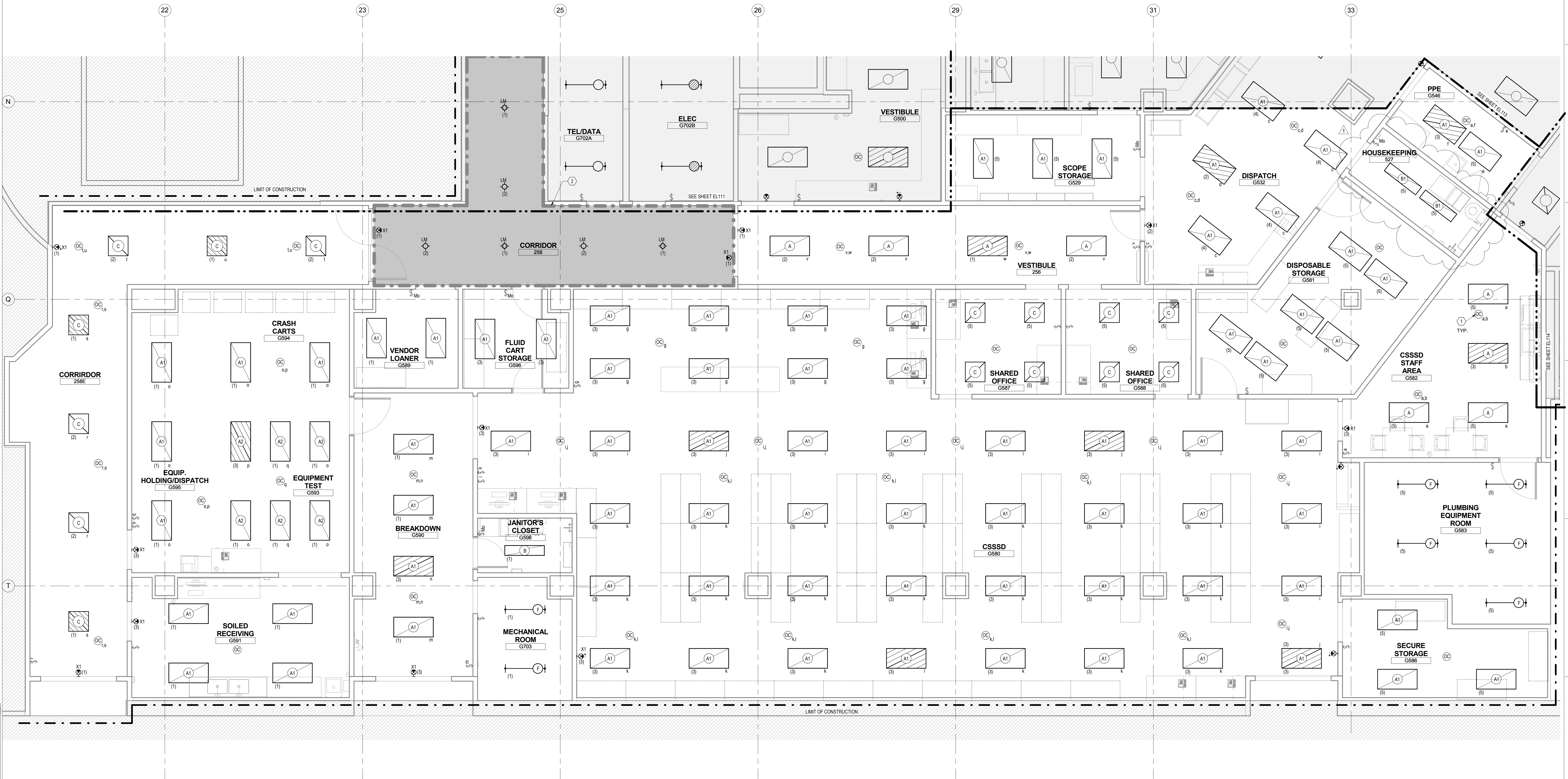
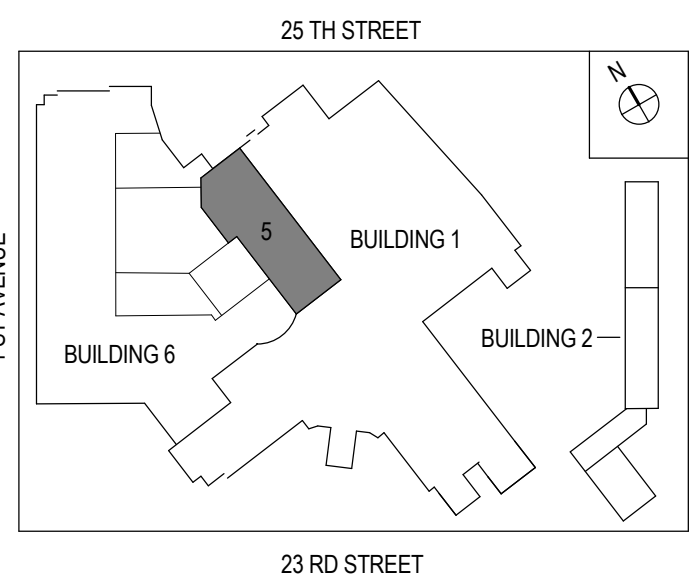
GENERAL NOTES:

1. CONNECT LIGHTING FIXTURES TO PANEL LP/SPS-GA CIRCUIT NUMBER INDICATED (#) UNLESS OTHERWISE NOTED.
2. CONNECT LIFE SAFETY EMERGENCY LIGHTING FIXTURES & EXIT SIGNS TO PANEL LP/SPS-GS CIRCUIT NUMBER INDICATED (#).
3. FOR LIGHTING CONTROL DIAGRAMS, REFER TO F1E1003.
4. FOR FIXTURE MOUNTING DETAILS, REFER TO B8 & C1E1003.
5. FOR LUMINAIRE SCHEDULE, REFER TO E1003.
6. REFER TO REFLECTED CEILING PLANS FOR LOCATION OF LIGHTING FIXTURES.
7. FINAL LOCATION OF TYPE F FIXTURES SHALL BE COORDINATED IN THE FIELD WITH ALL OTHER TRADES. FIXTURES SHALL BE MOUNTED 9'-0" A.F.F. UNLESS OTHERWISE NOTED.
8. FINAL LOCATION OF OCCUPANCY SENSORS SHALL BE DETERMINED IN THE FIELD BASED ON MANUFACTURER'S RECOMMENDATIONS.

KEYNOTES:

1. REFER TO DETAIL F1 ON SHEET E1003 FOR CONTROL INFORMATION AND WIRING DIAGRAMS.
2. PROVIDE LIGHTING FIXTURES AND CIRCUITING IN CORRIDOR AS SHOWN WITHIN THIS ZONE. LOW VOLTAGE CONTROLS SHALL BE INSTALLED UNDER FUTURE WORK AND SHALL NOT BE PROVIDED UNDER THIS CONTRACT. ALL FIXTURES SHALL BE ALWAYS ON WITHOUT CONTROLS UNTIL THE NEXT FUTURE PHASE.

KEY PLAN:



F1 GROUND FLOOR LIGHTING PLAN PART 5
1/4" = 1'-0"



ADDENDUM 1	
1	02/13/2015
2	07/25/2014
ISSUE FOR CONSTRUCTION	
NO	REVISIONS
	DATE

CONSULTANTS:

WARNING: This warning is required to be included on this document under New York State Education Law, Article 145, Section 7209, Sub-Paragraph 2. It is a violation of the aforementioned law for any person, unless acting under the direction of a licensed professional engineer or land surveyor, to alter any portion of the design set forth on this document. If any item of the design set forth in this document is altered, the altering engineer or land surveyor shall affix to the item his/her seal and the notation "altered by" followed by her/his signature and the date of such alteration and a specific description of the alteration.

ARCHITECT/ENGINEERS:



Henningson, Durham & Richardson, Architecture and Engineering, P.C.
500 Seventh Ave, 11th Floor, New York, NY 10018 212-904-1212

Drawing Title
GROUND FLOOR LIGHTING PLAN - PART 05

Approved: Project Director

Project Title
**VA NY HARBOR HEALTHCARE SYSTEM
MANHATTAN CAMPUS GROUND FLOOR PHASE 1B
STERILE PROCESSING SUITE**

Location
423 E 23RD STREET, NEW YORK, NY 10010
Date
02/18/2014
Checked
TL
Drawn
AU

Project Number
219359
Building Number
6
Drawing Number
EL115

FULLY SPRINKLERED

Office of
Construction
and Facilities
Management

VA U.S. Department
of Veterans Affairs