

VA248-14-R-1875 A00003

- NOTES
1.

EXISTING CONDUIT AND CONDUCTORS.
2.

5 SETS OF 4#600 KVMIL IN 3-1/2" CONDUIT EACH.
3.

EXTEND EXISTING SERVICE CONDUIT AND CONDUCTORS.
4.

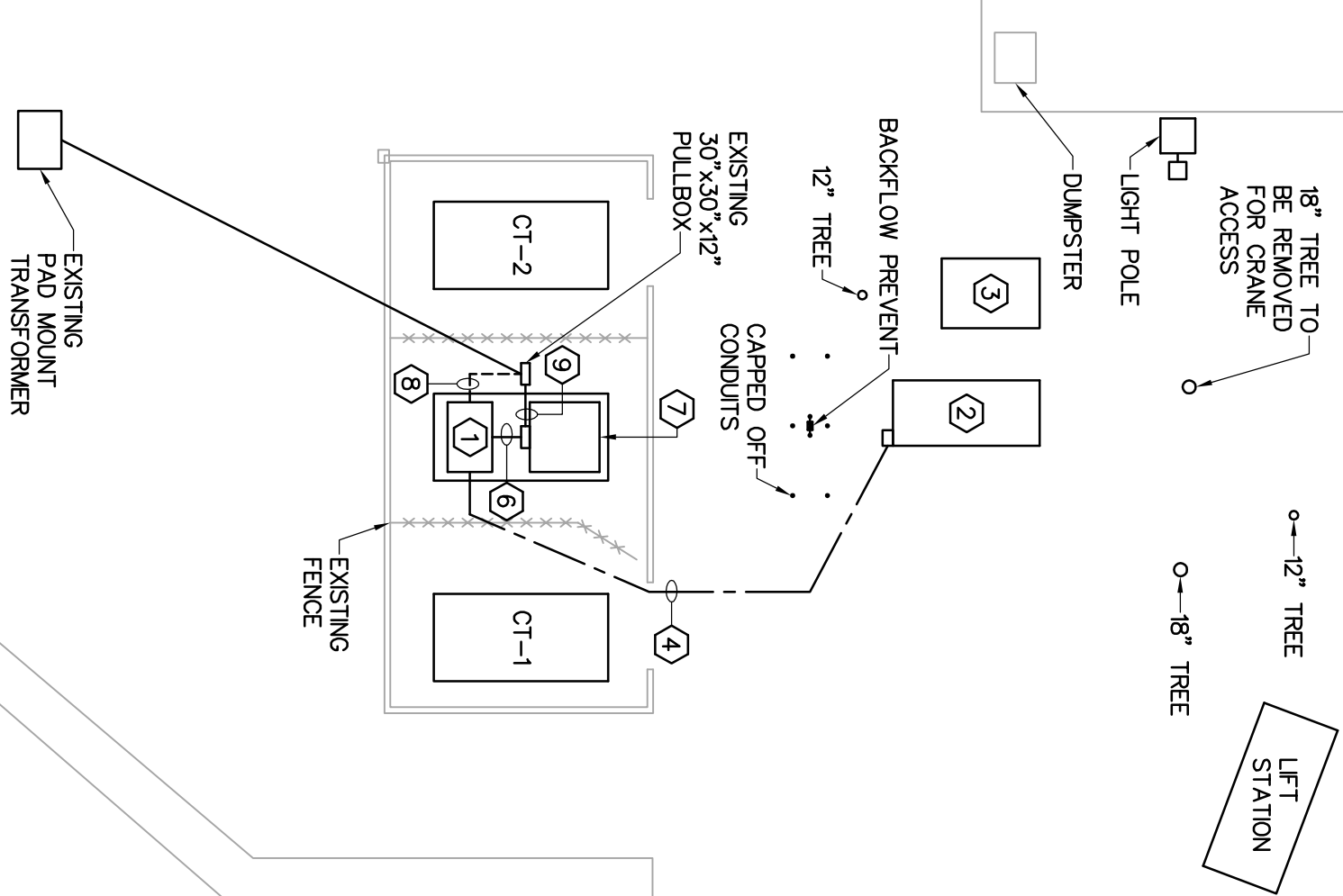
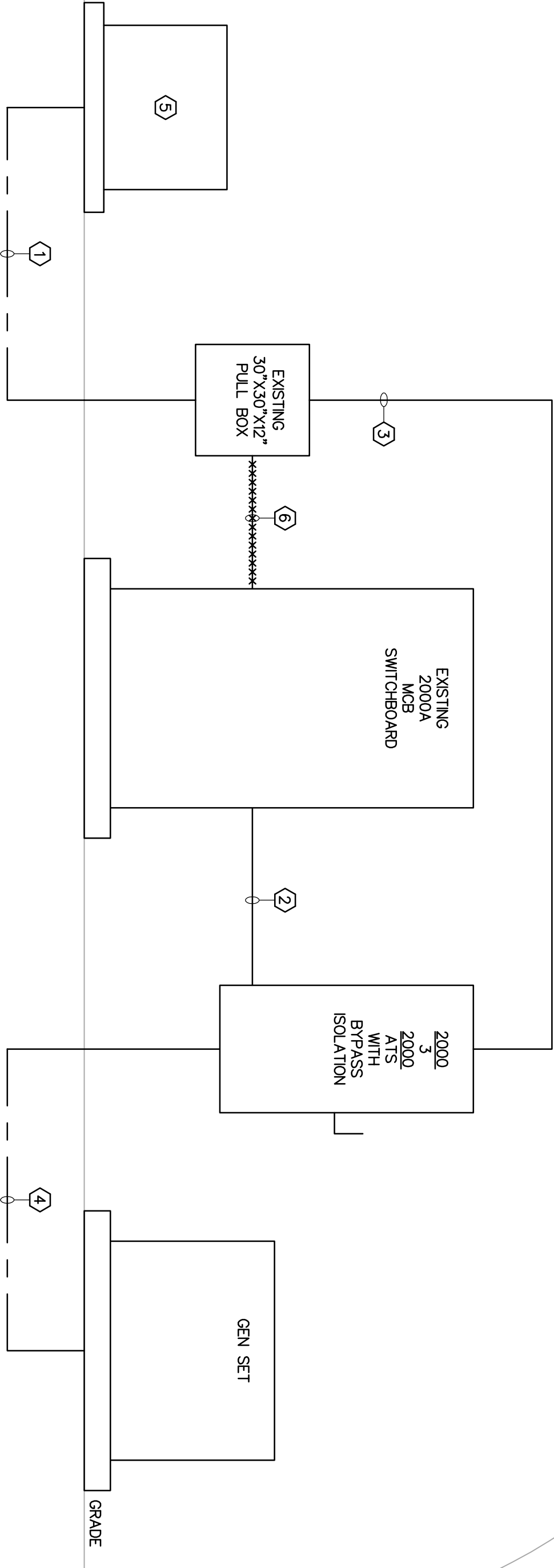
5 SETS OF 4#600 KVMIL AND 1#250 KVMIL IN 3-1/2" CONDUIT EACH.
5.

EXISTING PAD MOUNTED UTILITY TRANSFORMER.
6.

REMOVE EXISTING FEED.

ELECTRICAL RISER DIAGRAM

SCALE: NONE



ELECTRICAL SITE PLAN

SCALE: 1"=20'-0"

- NOTES
1.

2000A, 480/277V 3 PHASE, 4 WIRE, 3 POLE, NEMA 3R, SERVICE ENTRANCE RATED, AUTOMATIC TRANSFER SWITCH. SEE SPECIFICATIONS FOR MORE INFORMATION.
2.

1500 KW 480/277V 3 PHASE, 4 WIRE GENSET WITH SKID BASED DAYTANK. SEE SPECIFICATION FOR MORE INFORMATION.
3.

3000 GALLON ENVIRONMENTAL DIESEL FUEL TANK. SEE SPECIFICATIONS FOR MORE INFORMATION.
4.

5 SETS OF 4 #600 KVMIL, 1 #250 KVMIL EGC IN 3-1/2" CONDUIT.
5.

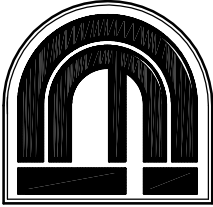
NOT USED.
6.

PROVIDE 5 SETS OF 4 #600 KVMIL, 1 #250 KVMIL IN 3-1/2" CONDUIT.
7.

EXISTING SWITCHGEAR WITH 2000A MCB.
8.

EXTEND EXISTING SERVICE CONDUCTORS AND CONDUIT TO NEW ATS SWITCH.
9.

REMOVE EXISTING CONDUCTORS AND CONDUIT FEEDING SWITCHGEAR.



Colwill Engineering
Engineering Business No. 9021
1070 Red Arrow Drive, Tampa, Florida 33605
Tel: 813-941-2000 Fax: 813-941-2434
© 2007 ALL RIGHTS RESERVED

Attachment 3 _ Generator Design

ELECTRICAL
SITE
PLAN

JOB NO: _____
DATE: _____
DRAWN BY: _____
REVIEWED BY: _____
MW

SHEET NO:

ES1

Rev	Date	Remarks