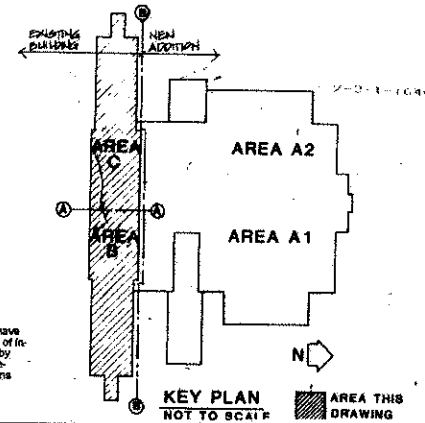


**TYPICAL STEAM RISER REMODEL**  
SCALE: NONE

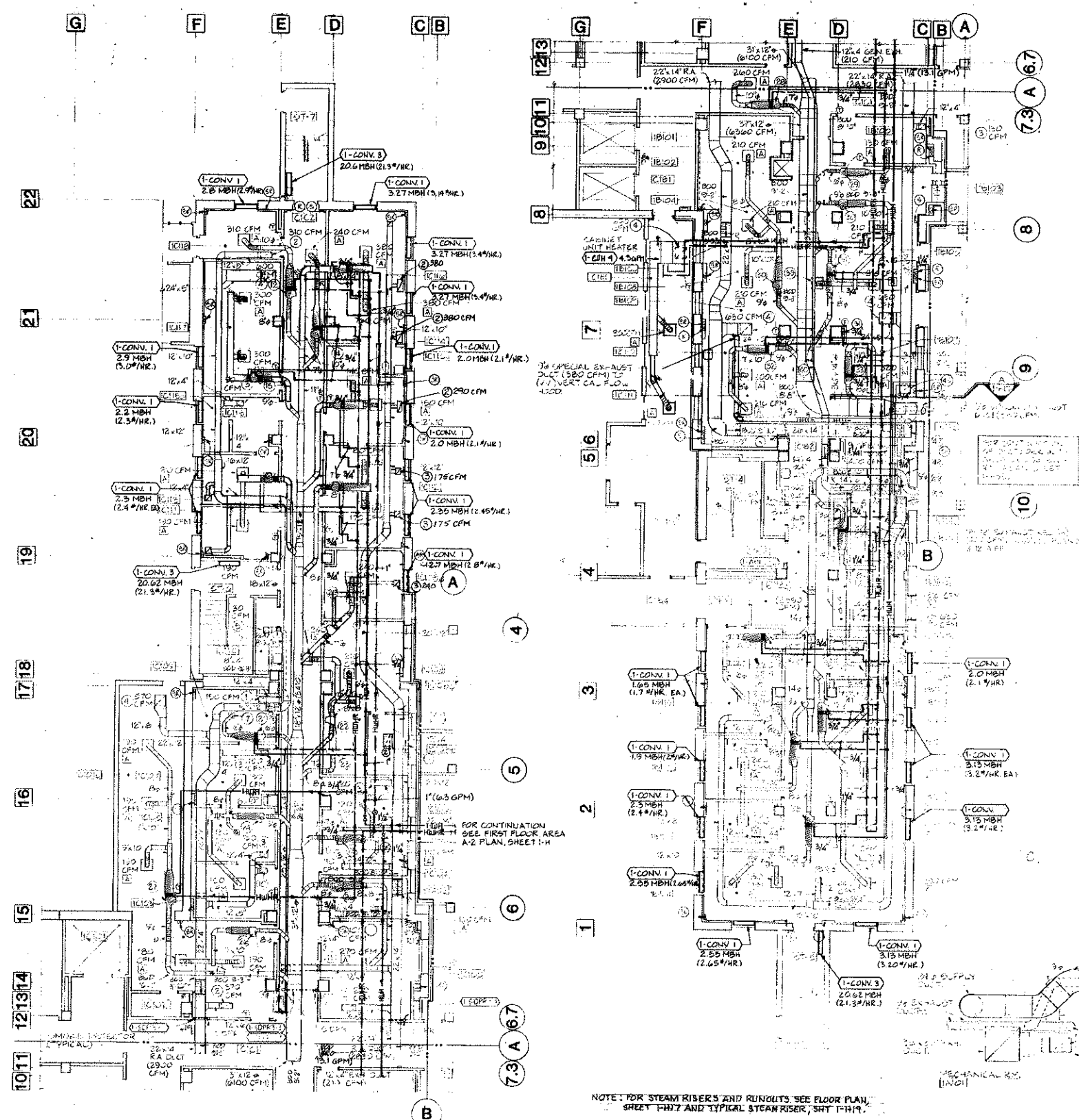
ROOM No.	ROOM NAME
2B100	H.A.C.
2B101	STORAGE
2B102	PHONE
2B103	STORAGE
2B104	TOILET
2B105	OT/CT, STORAGE
2B106	OCUP. THERAPY
2B107	OT, EXAM
2B108	OT, ADMIN.
2B109	TELEPHONE
2B110	WIRING POOL
2B111	HUBBARD TANK
2B112	TOILET RM.
2B113	CORRECT. THERAPY
2B114	WAITING
2B115	PHYSICAL THERAPY
2B116	UTILITY
2B117	UTILITY
2B118	UTILITY
2B119	UTILITY
2B120	UTILITY
2B121	UTILITY
2B122	UTILITY
2B123	UTILITY
2B124	UTILITY
2B125	UTILITY
2B126	UTILITY
2B127	UTILITY
2B128	UTILITY
2B129	UTILITY
2B130	UTILITY
2B131	UTILITY
2B132	UTILITY
2B133	UTILITY
2B134	UTILITY
2B135	UTILITY
2B136	UTILITY
2B137	UTILITY
2B138	UTILITY
2B139	UTILITY
2B140	UTILITY
2B141	UTILITY
2B142	UTILITY
2B143	UTILITY
2B144	UTILITY
2B145	UTILITY
2B146	UTILITY
2B147	UTILITY
2B148	UTILITY
2B149	UTILITY
2B150	UTILITY
2B151	UTILITY
2B152	UTILITY
2B153	UTILITY
2B154	UTILITY
2B155	UTILITY
2B156	UTILITY
2B157	UTILITY
2B158	UTILITY
2B159	UTILITY
2B160	UTILITY
2B161	UTILITY
2B162	UTILITY
2B163	UTILITY
2B164	UTILITY
2B165	UTILITY
2B166	UTILITY
2B167	UTILITY
2B168	UTILITY
2B169	UTILITY
2B170	UTILITY
2B171	UTILITY
2B172	UTILITY
2B173	UTILITY
2B174	UTILITY
2B175	UTILITY
2B176	UTILITY
2B177	UTILITY
2B178	UTILITY
2B179	UTILITY
2B180	UTILITY
2B181	UTILITY
2B182	UTILITY
2B183	UTILITY
2B184	UTILITY
2B185	UTILITY
2B186	UTILITY
2B187	UTILITY
2B188	UTILITY
2B189	UTILITY
2B190	UTILITY
2B191	UTILITY
2B192	UTILITY
2B193	UTILITY
2B194	UTILITY
2B195	UTILITY
2B196	UTILITY
2B197	UTILITY
2B198	UTILITY
2B199	UTILITY
2B200	UTILITY

- KEYED NOTES:**
- 1 DUCT TO RISE UP INTO BEAM SPACE.
  - 2 12" X 12" RETURN REGISTER [C]
  - 3 24" X 12" RETURN REGISTER [C]
  - 4 24" X 24" RETURN REGISTER [C]
  - 5 12" X 12" RETURN REGISTER [D]
  - 6 24" X 12" RETURN REGISTER [B]
  - 7 12" X 12" EXHAUST REGISTER [E]
  - 8 24" X 12" EXHAUST REGISTER [E]
  - 9 24" X 24" EXHAUST REGISTER [E]
  - 10 24" X 12" EXHAUST REGISTER [E]



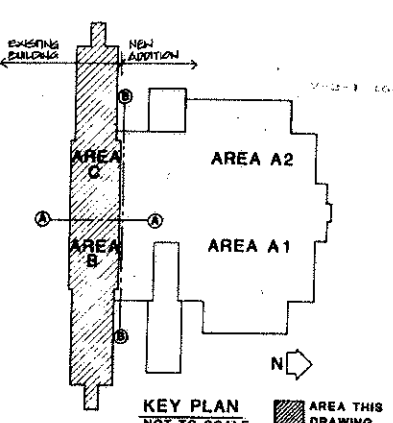
These as-built or record drawings have been prepared, in part, on the basis of information compiled and furnished by others. The Engineer will not be responsible for any errors or omissions which have been incorporated into this document as a result.

Revisions Date		1354 1/15/87				<b>MCB Architects</b> 1780 S. Bellaire St., Ste. 800/Denver, CO. 80222/Ph. 303-758-7858 OLLON - HUNT P.C. / ARCHITECTURE AND PROJECT MANAGEMENT		Drawing Title <b>SECOND FLOOR AREAS B &amp; C REMODEL DUCTWORK</b> 1/8" = 1'-0"		Project Title <b>OUTPATIENT/CLINICAL ADDITION</b>		Date <b>JULY 16, 1986</b>		Project No. <b>575-025</b>		Drawing No. <b>1-H19</b>		Location <b>VAMC-GRAND JUNCTION, COLORADO</b>		Drawn By <b>AP</b>		Checked By <b>AP</b>		Design By <b>AP</b>		Date <b>JULY 16, 1986</b>		Project No. <b>575-025</b>		Drawing No. <b>1-H19</b>		Location <b>VAMC-GRAND JUNCTION, COLORADO</b>		Drawn By <b>AP</b>		Checked By <b>AP</b>		Design By <b>AP</b>		Date <b>JULY 16, 1986</b>		Project No. <b>575-025</b>		Drawing No. <b>1-H19</b>		Location <b>VAMC-GRAND JUNCTION, COLORADO</b>		Drawn By <b>AP</b>		Checked By <b>AP</b>		Design By <b>AP</b>		Date <b>JULY 16, 1986</b>		Project No. <b>575-025</b>		Drawing No. <b>1-H19</b>		Location <b>VAMC-GRAND JUNCTION, COLORADO</b>		Drawn By <b>AP</b>		Checked By <b>AP</b>		Design By <b>AP</b>		Date <b>JULY 16, 1986</b>		Project No. <b>575-025</b>		Drawing No. <b>1-H19</b>		Location <b>VAMC-GRAND JUNCTION, COLORADO</b>		Drawn By <b>AP</b>		Checked By <b>AP</b>		Design By <b>AP</b>		Date <b>JULY 16, 1986</b>		Project No. <b>575-025</b>		Drawing No. <b>1-H19</b>		Location <b>VAMC-GRAND JUNCTION, COLORADO</b>		Drawn By <b>AP</b>		Checked By <b>AP</b>		Design By <b>AP</b>		Date <b>JULY 16, 1986</b>		Project No. <b>575-025</b>		Drawing No. <b>1-H19</b>		Location <b>VAMC-GRAND JUNCTION, COLORADO</b>		Drawn By <b>AP</b>		Checked By <b>AP</b>		Design By <b>AP</b>		Date <b>JULY 16, 1986</b>		Project No. <b>575-025</b>		Drawing No. <b>1-H19</b>		Location <b>VAMC-GRAND JUNCTION, COLORADO</b>		Drawn By <b>AP</b>		Checked By <b>AP</b>		Design By <b>AP</b>		Date <b>JULY 16, 1986</b>		Project No. <b>575-025</b>		Drawing No. <b>1-H19</b>		Location <b>VAMC-GRAND JUNCTION, COLORADO</b>		Drawn By <b>AP</b>		Checked By <b>AP</b>		Design By <b>AP</b>		Date <b>JULY 16, 1986</b>		Project No. <b>575-025</b>		Drawing No. <b>1-H19</b>		Location <b>VAMC-GRAND JUNCTION, COLORADO</b>		Drawn By <b>AP</b>		Checked By <b>AP</b>		Design By <b>AP</b>		Date <b>JULY 16, 1986</b>		Project No. <b>575-025</b>		Drawing No. <b>1-H19</b>		Location <b>VAMC-GRAND JUNCTION, COLORADO</b>		Drawn By <b>AP</b>		Checked By <b>AP</b>		Design By <b>AP</b>		Date <b>JULY 16, 1986</b>		Project No. <b>575-025</b>		Drawing No. <b>1-H19</b>		Location <b>VAMC-GRAND JUNCTION, COLORADO</b>		Drawn By <b>AP</b>		Checked By <b>AP</b>		Design By <b>AP</b>		Date <b>JULY 16, 1986</b>		Project No. <b>575-025</b>		Drawing No. <b>1-H19</b>		Location <b>VAMC-GRAND JUNCTION, COLORADO</b>		Drawn By <b>AP</b>		Checked By <b>AP</b>		Design By <b>AP</b>		Date <b>JULY 16, 1986</b>		Project No. <b>575-025</b>		Drawing No. <b>1-H19</b>		Location <b>VAMC-GRAND JUNCTION, COLORADO</b>		Drawn By <b>AP</b>		Checked By <b>AP</b>		Design By <b>AP</b>		Date <b>JULY 16, 1986</b>		Project No. <b>575-025</b>		Drawing No. <b>1-H19</b>		Location <b>VAMC-GRAND JUNCTION, COLORADO</b>		Drawn By <b>AP</b>		Checked By <b>AP</b>		Design By <b>AP</b>		Date <b>JULY 16, 1986</b>		Project No. <b>575-025</b>		Drawing No. <b>1-H19</b>		Location <b>VAMC-GRAND JUNCTION, COLORADO</b>		Drawn By <b>AP</b>		Checked By <b>AP</b>		Design By <b>AP</b>		Date <b>JULY 16, 1986</b>		Project No. <b>575-025</b>		Drawing No. <b>1-H19</b>		Location <b>VAMC-GRAND JUNCTION, COLORADO</b>		Drawn By <b>AP</b>		Checked By <b>AP</b>		Design By <b>AP</b>		Date <b>JULY 16, 1986</b>		Project No. <b>575-025</b>		Drawing No. <b>1-H19</b>		Location <b>VAMC-GRAND JUNCTION, COLORADO</b>		Drawn By <b>AP</b>		Checked By <b>AP</b>		Design By <b>AP</b>		Date <b>JULY 16, 1986</b>		Project No. <b>575-025</b>		Drawing No. <b>1-H19</b>		Location <b>VAMC-GRAND JUNCTION, COLORADO</b>		Drawn By <b>AP</b>		Checked By <b>AP</b>		Design By <b>AP</b>		Date <b>JULY 16, 1986</b>		Project No. <b>575-025</b>		Drawing No. <b>1-H19</b>		Location <b>VAMC-GRAND JUNCTION, COLORADO</b>		Drawn By <b>AP</b>		Checked By <b>AP</b>		Design By <b>AP</b>		Date <b>JULY 16, 1986</b>		Project No. <b>575-025</b>		Drawing No. <b>1-H19</b>		Location <b>VAMC-GRAND JUNCTION, COLORADO</b>		Drawn By <b>AP</b>		Checked By <b>AP</b>		Design By <b>AP</b>		Date <b>JULY 16, 1986</b>		Project No. <b>575-025</b>		Drawing No. <b>1-H19</b>		Location <b>VAMC-GRAND JUNCTION, COLORADO</b>		Drawn By <b>AP</b>		Checked By <b>AP</b>		Design By <b>AP</b>		Date <b>JULY 16, 1986</b>		Project No. <b>575-025</b>		Drawing No. <b>1-H19</b>		Location <b>VAMC-GRAND JUNCTION, COLORADO</b>		Drawn By <b>AP</b>		Checked By <b>AP</b>		Design By <b>AP</b>		Date <b>JULY 16, 1986</b>		Project No. <b>575-025</b>		Drawing No. <b>1-H19</b>		Location <b>VAMC-GRAND JUNCTION, COLORADO</b>		Drawn By <b>AP</b>		Checked By <b>AP</b>		Design By <b>AP</b>		Date <b>JULY 16, 1986</b>		Project No. <b>575-025</b>		Drawing No. <b>1-H19</b>		Location <b>VAMC-GRAND JUNCTION, COLORADO</b>		Drawn By <b>AP</b>		Checked By <b>AP</b>		Design By <b>AP</b>		Date <b>JULY 16, 1986</b>		Project No. <b>575-025</b>		Drawing No. <b>1-H19</b>		Location <b>VAMC-GRAND JUNCTION, COLORADO</b>		Drawn By <b>AP</b>		Checked By <b>AP</b>		Design By <b>AP</b>		Date <b>JULY 16, 1986</b>		Project No. <b>575-025</b>		Drawing No. <b>1-H19</b>		Location <b>VAMC-GRAND JUNCTION, COLORADO</b>		Drawn By <b>AP</b>		Checked By <b>AP</b>		Design By <b>AP</b>		Date <b>JULY 16, 1986</b>		Project No. <b>575-025</b>		Drawing No. <b>1-H19</b>		Location <b>VAMC-GRAND JUNCTION, COLORADO</b>		Drawn By <b>AP</b>		Checked By <b>AP</b>		Design By <b>AP</b>		Date <b>JULY 16, 1986</b>		Project No. <b>575-025</b>		Drawing No. <b>1-H19</b>		Location <b>VAMC-GRAND JUNCTION, COLORADO</b>		Drawn By <b>AP</b>		Checked By <b>AP</b>		Design By <b>AP</b>		Date <b>JULY 16, 1986</b>		Project No. <b>575-025</b>		Drawing No. <b>1-H19</b>		Location <b>VAMC-GRAND JUNCTION, COLORADO</b>		Drawn By <b>AP</b>		Checked By <b>AP</b>		Design By <b>AP</b>		Date <b>JULY 16, 1986</b>		Project No. <b>575-025</b>		Drawing No. <b>1-H19</b>		Location <b>VAMC-GRAND JUNCTION, COLORADO</b>		Drawn By <b>AP</b>		Checked By <b>AP</b>		Design By <b>AP</b>		Date <b>JULY 16, 1986</b>		Project No. <b>575-025</b>		Drawing No. <b>1-H19</b>		Location <b>VAMC-GRAND JUNCTION, COLORADO</b>		Drawn By <b>AP</b>		Checked By <b>AP</b>		Design By <b>AP</b>		Date <b>JULY 16, 1986</b>		Project No. <b>575-025</b>		Drawing No. <b>1-H19</b>		Location <b>VAMC-GRAND JUNCTION, COLORADO</b>		Drawn By <b>AP</b>		Checked By <b>AP</b>		Design By <b>AP</b>		Date <b>JULY 16, 1986</b>		Project No. <b>575-025</b>		Drawing No. <b>1-H19</b>		Location <b>VAMC-GRAND JUNCTION, COLORADO</b>		Drawn By <b>AP</b>		Checked By <b>AP</b>		Design By <b>AP</b>		Date <b>JULY 16, 1986</b>		Project No. <b>575-025</b>		Drawing No. <b>1-H19</b>		Location <b>VAMC-GRAND JUNCTION, COLORADO</b>		Drawn By <b>AP</b>		Checked By <b>AP</b>		Design By <b>AP</b>		Date <b>JULY 16, 1986</b>		Project No. <b>575-025</b>		Drawing No. <b>1-H19</b>		Location <b>VAMC-GRAND JUNCTION, COLORADO</b>		Drawn By <b>AP</b>		Checked By <b>AP</b>		Design By <b>AP</b>		Date <b>JULY 16, 1986</b>		Project No. <b>575-025</b>		Drawing No. <b>1-H19</b>		Location <b>VAMC-GRAND JUNCTION, COLORADO</b>		Drawn By <b>AP</b>		Checked By <b>AP</b>		Design By <b>AP</b>		Date <b>JULY 16, 1986</b>		Project No. <b>575-025</b>		Drawing No. <b>1-H19</b>		Location <b>VAMC-GRAND JUNCTION, COLORADO</b>		Drawn By <b>AP</b>		Checked By <b>AP</b>		Design By <b>AP</b>		Date <b>JULY 16, 1986</b>		Project No. <b>575-025</b>		Drawing No. <b>1-H19</b>		Location <b>VAMC-GRAND JUNCTION, COLORADO</b>		Drawn By <b>AP</b>		Checked By <b>AP</b>		Design By <b>AP</b>		Date <b>JULY 16, 1986</b>		Project No. <b>575-025</b>		Drawing No. <b>1-H19</b>		Location <b>VAMC-GRAND JUNCTION, COLORADO</b>		Drawn By <b>AP</b>		Checked By <b>AP</b>		Design By <b>AP</b>		Date <b>JULY 16, 1986</b>		Project No. <b>575-025</b>		Drawing No. <b>1-H19</b>		Location <b>VAMC-GRAND JUNCTION, COLORADO</b>		Drawn By <b>AP</b>		Checked By <b>AP</b>		Design By <b>AP</b>		Date <b>JULY 16, 1986</b>		Project No. <b>575-025</b>		Drawing No. <b>1-H19</b>		Location <b>VAMC-GRAND JUNCTION, COLORADO</b>		Drawn By <b>AP</b>		Checked By <b>AP</b>		Design By <b>AP</b>		Date <b>JULY 16, 1986</b>		Project No. <b>575-025</b>		Drawing No. <b>1-H19</b>		Location <b>VAMC-GRAND JUNCTION, COLORADO</b>		Drawn By <b>AP</b>		Checked By <b>AP</b>		Design By <b>AP</b>		Date <b>JULY 16, 1986</b>		Project No. <b>575-025</b>		Drawing No. <b>1-H19</b>		Location <b>VAMC-GRAND JUNCTION, COLORADO</b>		Drawn By <b>AP</b>		Checked By <b>AP</b>		Design By <b>AP</b>		Date <b>JULY 16, 1986</b>		Project No. <b>575-025</b>		Drawing No. <b>1-H19</b>		Location <b>VAMC-GRAND JUNCTION, COLORADO</b>		Drawn By <b>AP</b>		Checked By <b>AP</b>		Design By <b>AP</b>		Date <b>JULY 16, 1986</b>		Project No. <b>575-025</b>		Drawing No. <b>1-H19</b>		Location <b>VAMC-GRAND JUNCTION, COLORADO</b>		Drawn By <b>AP</b>		Checked By <b>AP</b>		Design By <b>AP</b>		Date <b>JULY 16, 1986</b>		Project No. <b>575-025</b>		Drawing No. <b>1-H19</b>		Location <b>VAMC-GRAND JUNCTION, COLORADO</b>		Drawn By <b>AP</b>			
-------------------	--	-----------------	--	--	--	---	--	---	--	--	--	------------------------------	--	-------------------------------	--	-----------------------------	--	--	--	-----------------------	--	-------------------------	--	------------------------	--	------------------------------	--	-------------------------------	--	-----------------------------	--	--	--	-----------------------	--	-------------------------	--	------------------------	--	------------------------------	--	-------------------------------	--	-----------------------------	--	--	--	-----------------------	--	-------------------------	--	------------------------	--	------------------------------	--	-------------------------------	--	-----------------------------	--	--	--	-----------------------	--	-------------------------	--	------------------------	--	------------------------------	--	-------------------------------	--	-----------------------------	--	--	--	-----------------------	--	-------------------------	--	------------------------	--	------------------------------	--	-------------------------------	--	-----------------------------	--	--	--	-----------------------	--	-------------------------	--	------------------------	--	------------------------------	--	-------------------------------	--	-----------------------------	--	--	--	-----------------------	--	-------------------------	--	------------------------	--	------------------------------	--	-------------------------------	--	-----------------------------	--	--	--	-----------------------	--	-------------------------	--	------------------------	--	------------------------------	--	-------------------------------	--	-----------------------------	--	--	--	-----------------------	--	-------------------------	--	------------------------	--	------------------------------	--	-------------------------------	--	-----------------------------	--	--	--	-----------------------	--	-------------------------	--	------------------------	--	------------------------------	--	-------------------------------	--	-----------------------------	--	--	--	-----------------------	--	-------------------------	--	------------------------	--	------------------------------	--	-------------------------------	--	-----------------------------	--	--	--	-----------------------	--	-------------------------	--	------------------------	--	------------------------------	--	-------------------------------	--	-----------------------------	--	--	--	-----------------------	--	-------------------------	--	------------------------	--	------------------------------	--	-------------------------------	--	-----------------------------	--	--	--	-----------------------	--	-------------------------	--	------------------------	--	------------------------------	--	-------------------------------	--	-----------------------------	--	--	--	-----------------------	--	-------------------------	--	------------------------	--	------------------------------	--	-------------------------------	--	-----------------------------	--	--	--	-----------------------	--	-------------------------	--	------------------------	--	------------------------------	--	-------------------------------	--	-----------------------------	--	--	--	-----------------------	--	-------------------------	--	------------------------	--	------------------------------	--	-------------------------------	--	-----------------------------	--	--	--	-----------------------	--	-------------------------	--	------------------------	--	------------------------------	--	-------------------------------	--	-----------------------------	--	--	--	-----------------------	--	-------------------------	--	------------------------	--	------------------------------	--	-------------------------------	--	-----------------------------	--	--	--	-----------------------	--	-------------------------	--	------------------------	--	------------------------------	--	-------------------------------	--	-----------------------------	--	--	--	-----------------------	--	-------------------------	--	------------------------	--	------------------------------	--	-------------------------------	--	-----------------------------	--	--	--	-----------------------	--	-------------------------	--	------------------------	--	------------------------------	--	-------------------------------	--	-----------------------------	--	--	--	-----------------------	--	-------------------------	--	------------------------	--	------------------------------	--	-------------------------------	--	-----------------------------	--	--	--	-----------------------	--	-------------------------	--	------------------------	--	------------------------------	--	-------------------------------	--	-----------------------------	--	--	--	-----------------------	--	-------------------------	--	------------------------	--	------------------------------	--	-------------------------------	--	-----------------------------	--	--	--	-----------------------	--	-------------------------	--	------------------------	--	------------------------------	--	-------------------------------	--	-----------------------------	--	--	--	-----------------------	--	-------------------------	--	------------------------	--	------------------------------	--	-------------------------------	--	-----------------------------	--	--	--	-----------------------	--	-------------------------	--	------------------------	--	------------------------------	--	-------------------------------	--	-----------------------------	--	--	--	-----------------------	--	-------------------------	--	------------------------	--	------------------------------	--	-------------------------------	--	-----------------------------	--	--	--	-----------------------	--	-------------------------	--	------------------------	--	------------------------------	--	-------------------------------	--	-----------------------------	--	--	--	-----------------------	--	-------------------------	--	------------------------	--	------------------------------	--	-------------------------------	--	-----------------------------	--	--	--	-----------------------	--	-------------------------	--	------------------------	--	------------------------------	--	-------------------------------	--	-----------------------------	--	--	--	-----------------------	--	-------------------------	--	------------------------	--	------------------------------	--	-------------------------------	--	-----------------------------	--	--	--	-----------------------	--	-------------------------	--	------------------------	--	------------------------------	--	-------------------------------	--	-----------------------------	--	--	--	-----------------------	--	-------------------------	--	------------------------	--	------------------------------	--	-------------------------------	--	-----------------------------	--	--	--	-----------------------	--	-------------------------	--	------------------------	--	------------------------------	--	-------------------------------	--	-----------------------------	--	--	--	-----------------------	--	-------------------------	--	------------------------	--	------------------------------	--	-------------------------------	--	-----------------------------	--	--	--	-----------------------	--	-------------------------	--	------------------------	--	------------------------------	--	-------------------------------	--	-----------------------------	--	--	--	-----------------------	--	-------------------------	--	------------------------	--	------------------------------	--	-------------------------------	--	-----------------------------	--	--	--	-----------------------	--	-------------------------	--	------------------------	--	------------------------------	--	-------------------------------	--	-----------------------------	--	--	--	-----------------------	--	-------------------------	--	------------------------	--	------------------------------	--	-------------------------------	--	-----------------------------	--	--	--	-----------------------	--	-------------------------	--	------------------------	--	------------------------------	--	-------------------------------	--	-----------------------------	--	--	--	-----------------------	--	-------------------------	--	------------------------	--	------------------------------	--	-------------------------------	--	-----------------------------	--	--	--	-----------------------	--	-------------------------	--	------------------------	--	------------------------------	--	-------------------------------	--	-----------------------------	--	--	--	-----------------------	--	-------------------------	--	------------------------	--	------------------------------	--	-------------------------------	--	-----------------------------	--	--	--	-----------------------	--	-------------------------	--	------------------------	--	------------------------------	--	-------------------------------	--	-----------------------------	--	--	--	-----------------------	--	--	--



- KEYED NOTES:
- 1 12" X 12" EXHAUST REGISTER [E]
  - 2 24" X 12" RETURN AIR REGISTER [E]
  - 3 12" X 12" RETURN AIR REGISTER [E]
  - 4 24" X 24" RETURN AIR REGISTER [E]
  - 5 12" X 12" EXHAUST REGISTER [E]
  - 6 12" X 12" RETURN AIR REGISTER [E] 210 CFM
  - 7 130 CFM A WITH 6" DIA. NECK.
  - 8 70 CFM A WITH 6" DIA. NECK.
  - 9 12" X 12" RETURN AIR REGISTER [E] 70 CFM
  - 10 12" X 12" RETURN AIR REGISTER [E] 150 CFM
  - 11 12" X 12" RETURN AIR REGISTER [E] 240 CFM
  - 12 VVR-3 350 CFM
  - 13 VVR-5 760 CFM
  - 14 CTR-2 240 CFM
  - 15 VVR-5 600 CFM
  - 16 VVR-2 250 CFM
  - 17 DELETED
  - 18 VVR-4 530 CFM
  - 19 VVR-5 350 CFM
  - 20 VVR-2 240 CFM
  - 21 CTR-1 130 CFM
  - 22 CY-2 240 CFM
  - 23 VV-3 350 CFM
  - 24 VV-4 430 CFM
  - 25 VV-2 230 CFM
  - 26 VV-3 370 CFM (TYPICAL OF 2)
  - 27 VVR-5 570 CFM
  - 28 CTR-2 250 CFM
  - 29 VV-1 130 CFM
  - 30 VV-5 630 CFM (TYPICAL OF 2)
  - 31 CTR-2 200 CFM
  - 32 CTR-4 410 CFM
  - 33 CTR-3 320 CFM
  - 34 VVR-5 630 CFM
  - 35 VVR-4 430 CFM
  - 36 VVR-8 1180 CFM
  - 37 VVR-4 420 CFM
  - 38 CTR-3 360 CFM
  - 39 210 CFM [E] WITH 8" DIAMETER NECK
  - 40 200 CFM [E] WITH 8" DIAMETER NECK
  - 41 24" X 12" RETURN AIR REGISTER [E] 430 CFM
  - 42 24" X 12" RETURN AIR REGISTER [E] 430 CFM
  - 43 12" X 12" RETURN AIR REGISTER [E] 220 CFM
  - 44 12" X 12" RETURN AIR REGISTER [E] 200 CFM
  - 45 22" X 15" RETURN AIR DUCT (3590 CFM)
  - 46 24" DIAMETER SUPPLY DUCT (8880 CFM)
  - 47 26" X 14" RETURN AIR DUCT (3530 CFM)
  - 48 14" DIAMETER SUPPLY DUCT (3020 CFM)
  - 49 14" X 6" GENERAL EXHAUST DUCT (810 CFM)
  - 50 22" X 14" RETURN AIR DUCT (2820 CFM)

ROOM SCHEDULE	
ROOM NO.	ROOM NAME
1ST FLOOR AREA 1B	
1B100	CONSULT
1B101	DATA PROCESSING
1B102	MD. ASSIGNMENT
1B103	O.P. DISPENSING
1B104	STAT. COUNTER
1B105	ACTIVE STORAGE
1B106	I.V. DISP.
1B107	PROSTHETICS
1B108	ACTIVE STORAGE
1B109	STER. STORAGE
1B110	ONCOLOGY PREP.
1B111	ASIP. TRANSFER
1B112	EXTENT. COMP.
1B113	TELEPHONE
1B114	POISON CONT.
1B114a	SEC. DISP.
1B114b	FLAM. STORAGE
1B114c	CONTROL SUBST.
1B115	SECRETARY/MAILING
1B116	TOILET
1B117	CHIEF
1B118	DATA PROCESSING
1B119	H.A.C.
1B120	DRUG RECEIVING
1B121	PREPAC
1B122	ASSIST. CHIEF
1B123	STERILE STORAGE
1B124	STERILE STORAGE
C1B1	CORRIDOR
C1B2	CORRIDOR
C1B3	CORRIDOR
C1B4	CORRIDOR
C1B5	CORRIDOR
ST-4	STAIR
ST-5	STAIR
1ST FLOOR AREA 1C	
1C100	SUP. OFFICE
1C101	CURC. TRAINING
1C102	ASST. CHIEF
1C103	CLOSET
1C104	UNASSIGNED
1C105	STORAGE
1C106	SECRETARY
1C107	NS. CHIEF
1C108	EDUCATION INSTRUCTOR
1C109	ASSOCIATE CHIEF
1C110	SILVER COLL.
1C111	SECRETARY/CLERICAL
1C112	TELEPHONE
1C113	PERSONNEL MANAGEMENT
1C114	CHIEF OF STAFF
1C115	PLACE EXAM.
1C116	SECRETARY
1C117	WAITING
1C118	STORAGE
1C119	DIRECTOR OFFICE
1C120	TOILET
1C121	CONFERENCE
1C122	ACCESS TO ADP
C1C1	CORRIDOR
C1C2	CORRIDOR
ST-6	STAIR
ST-7	STAIR
1C100A	PL. CHIEF
1C100B	ASST. CHIEF
1C100C	PL. CHIEF
1C100D	PL. CHIEF

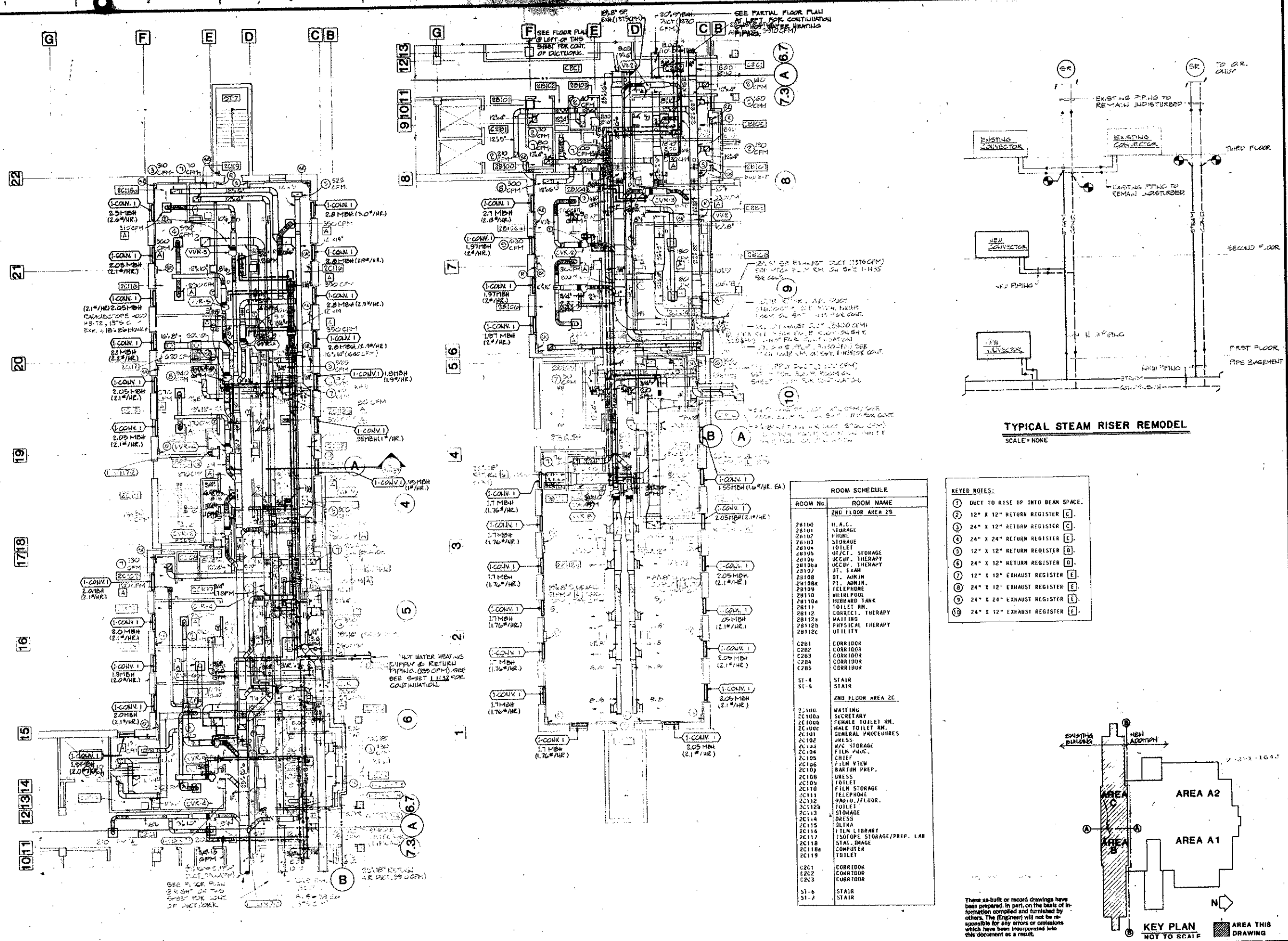


NOTE: FOR STEAM RISERS AND RUNOUTS SEE FLOOR PLAN, SHEET 1-H17 AND TYPICAL STEAM RISER, SRT 1-H17.

SECTION A SCALE 1/4" = 1'-0" 1/2"

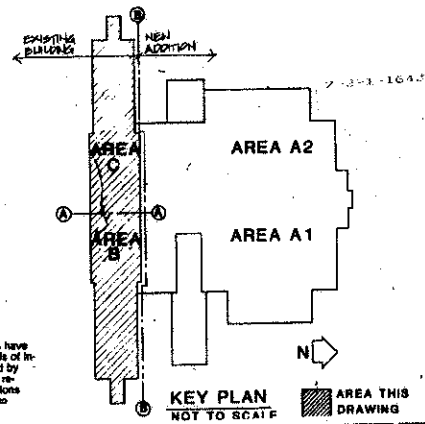
These as-built or record drawings have been prepared, in part, on the basis of information compiled and furnished by others. The Engineer will not be responsible for any errors or omissions which have been incorporated into this document as a result.

Drawing Title <b>FIRST FLOOR B&amp;C REMODEL DUCTWORK</b>		Project Title <b>OUTPATIENT/CLINICAL ADDITION</b>	
Drawing No. <b>1-H20</b>		Date <b>JULY 16, 1986</b>	
Project No. <b>675-025</b>		Drawing No. <b>1-H20</b>	
Building Number <b>1</b>		Checked <b>[Signature]</b>	
Location <b>VAMC-GRAND JUNCTION, COLORADO</b>		Drawn <b>[Signature]</b>	
Project Director <b>[Signature]</b>		Veterans Administration	
A Joint Venture <b>MCB Architects</b> 1780 S. Belaire St., Ste. 800/Denver, CO 80222/Ph. 303-758-7858		DILLON-HUNT P.C. / ARCHITECTURE AND PROJECT MANAGEMENT	



ROOM SCHEDULE	
ROOM No.	ROOM NAME
<b>2ND FLOOR AREA 2B</b>	
2B100	N. A.C.
2B101	STORAGE
2B102	PHONE
2B103	STORAGE
2B104	TOILET
2B105	OFFICE, STORAGE
2B106	OCUP, THERAPY
2B107	OCUP, THERAPY
2B108	OT, EXAM
2B109	OT, ADMIN
2B110	PI, ADMIN
2B111	TELEPHONE
2B112	MIXING POND
2B113	HUBBARD TANK
2B114	TOILET RN
2B115	CORRECT, THERAPY
2B116	WAITING
2B117	PHYSICAL THERAPY
2B118	UTILITY
2B119	UTILITY
2B201	CORRIDOR
2B202	CORRIDOR
2B203	CORRIDOR
2B204	CORRIDOR
2B205	CORRIDOR
2B206	CORRIDOR
2B207	CORRIDOR
2B208	CORRIDOR
2B209	CORRIDOR
2B210	CORRIDOR
2B211	CORRIDOR
2B212	CORRIDOR
2B213	CORRIDOR
2B214	CORRIDOR
2B215	CORRIDOR
2B216	CORRIDOR
2B217	CORRIDOR
2B218	CORRIDOR
2B219	CORRIDOR
2B220	CORRIDOR
2B221	CORRIDOR
2B222	CORRIDOR
2B223	CORRIDOR
2B224	CORRIDOR
2B225	CORRIDOR
2B226	CORRIDOR
2B227	CORRIDOR
2B228	CORRIDOR
2B229	CORRIDOR
2B230	CORRIDOR
2B231	CORRIDOR
2B232	CORRIDOR
2B233	CORRIDOR
2B234	CORRIDOR
2B235	CORRIDOR
2B236	CORRIDOR
2B237	CORRIDOR
2B238	CORRIDOR
2B239	CORRIDOR
2B240	CORRIDOR
2B241	CORRIDOR
2B242	CORRIDOR
2B243	CORRIDOR
2B244	CORRIDOR
2B245	CORRIDOR
2B246	CORRIDOR
2B247	CORRIDOR
2B248	CORRIDOR
2B249	CORRIDOR
2B250	CORRIDOR
2B251	CORRIDOR
2B252	CORRIDOR
2B253	CORRIDOR
2B254	CORRIDOR
2B255	CORRIDOR
2B256	CORRIDOR
2B257	CORRIDOR
2B258	CORRIDOR
2B259	CORRIDOR
2B260	CORRIDOR
2B261	CORRIDOR
2B262	CORRIDOR
2B263	CORRIDOR
2B264	CORRIDOR
2B265	CORRIDOR
2B266	CORRIDOR
2B267	CORRIDOR
2B268	CORRIDOR
2B269	CORRIDOR
2B270	CORRIDOR
2B271	CORRIDOR
2B272	CORRIDOR
2B273	CORRIDOR
2B274	CORRIDOR
2B275	CORRIDOR
2B276	CORRIDOR
2B277	CORRIDOR
2B278	CORRIDOR
2B279	CORRIDOR
2B280	CORRIDOR
2B281	CORRIDOR
2B282	CORRIDOR
2B283	CORRIDOR
2B284	CORRIDOR
2B285	CORRIDOR
2B286	CORRIDOR
2B287	CORRIDOR
2B288	CORRIDOR
2B289	CORRIDOR
2B290	CORRIDOR
2B291	CORRIDOR
2B292	CORRIDOR
2B293	CORRIDOR
2B294	CORRIDOR
2B295	CORRIDOR
2B296	CORRIDOR
2B297	CORRIDOR
2B298	CORRIDOR
2B299	CORRIDOR
2B300	CORRIDOR
2B301	CORRIDOR
2B302	CORRIDOR
2B303	CORRIDOR
2B304	CORRIDOR
2B305	CORRIDOR
2B306	CORRIDOR
2B307	CORRIDOR
2B308	CORRIDOR
2B309	CORRIDOR
2B310	CORRIDOR
2B311	CORRIDOR
2B312	CORRIDOR
2B313	CORRIDOR
2B314	CORRIDOR
2B315	CORRIDOR
2B316	CORRIDOR
2B317	CORRIDOR
2B318	CORRIDOR
2B319	CORRIDOR
2B320	CORRIDOR
2B321	CORRIDOR
2B322	CORRIDOR
2B323	CORRIDOR
2B324	CORRIDOR
2B325	CORRIDOR
2B326	CORRIDOR
2B327	CORRIDOR
2B328	CORRIDOR

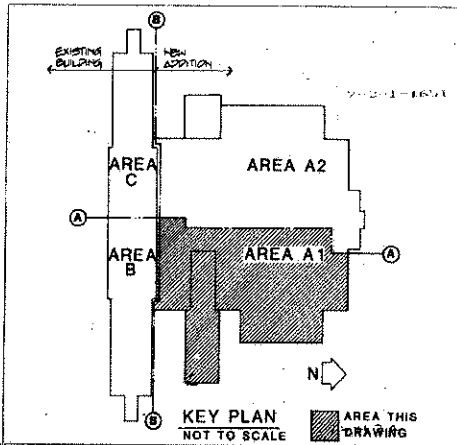
- KEYED NOTES:**
- |   |                                  |    |
|---|----------------------------------|----|
| ⑦ | DUCT TO RISE UP INTO BEAM SPACE. |    |
| ⑧ | 12" X 12" RETURN REGISTER        | C. |
| ⑨ | 24" X 12" RETURN REGISTER        | C. |
| ⑩ | 24" X 24" RETURN REGISTER        | C. |
| ⑪ | 12" X 12" RETURN REGISTER        | B. |
| ⑫ | 24" X 12" RETURN REGISTER        | B. |
| ⑬ | 12" X 12" EXHAUST REGISTER       | E. |
| ⑭ | 24" X 12" EXHAUST REGISTER       | E. |
| ⑮ | 24" X 24" EXHAUST REGISTER       | E. |
| ⑯ | 24" X 12" EXHAUST REGISTER       | F. |



KEYED NOTES	
1	12" X 12" EXHAUST REGISTER [E]
2	24" X 24" RETURN AIR REGISTER [E]
3	24" X 12" RETURN AIR REGISTER [E]
4	12" X 12" RETURN AIR REGISTER [E]

ROOM SCHEDULE	
ROOM NO.	ROOM NAME
C1A1	ELEVATOR LOBBY
C1A2	CORRIDOR
C1A3	CORRIDOR
C1A4	CORRIDOR
C1A5	CORRIDOR
C1A6	CORRIDOR
C1A7	CORRIDOR
C1A8	CORRIDOR
ST-1	STAIRS NO. 1
ST-2	STAIRS NO. 2
ST-3	STAIRS NO. 3
1A100	VESTIBULE
1A101	MECHANICAL ROOM
1A102	PHARMACY WAITING
1A103	ELECTRIC CLOSET
1A104	TELEPHONE CLOSET
1A105	POLICE
1A106	VENDING
1A107	FEMALE TOILET
1A108	MALE TOILET
1A109	ESCORT
1A110	EXAM/TREATMENT
1A111	EXAM/TREATMENT
1A112	EXAM/TREATMENT
1A113	EXAM/TREATMENT
1A114	CAST ROOM/ORTHOPEDIC EQ.
1A115	G.U. EXAM/TREATMENT
1A116	TOILET
1A117	DRESSING
1A118	PHYSICIAN
1A119	G.U. WAITING
1A120	SOCIAL WORKER
1A121	UNASSIGNED
1A122	UNASSIGNED
1A123	FEMALE TOILET
1A124	MALE TOILET
1A125	MECHANICAL ROOM
1A126	ELECTRIC CLOSET
1A127	TELEPHONE CLOSET
1A128	SOCIAL WORKER
1A129	COMPUTER
1A130	BIOFEEDBACK
1A131	PSYCHOLOGICAL TESTING
1A132	PSYCHOLOGIST
1A133	GROUP THERAPY
1A134	PSYCHOLOGIST
1A135	PSYCHOLOGIST
1A136	PSYCHIATRIST
1A137	PSYCHIATRIST
1A138	SECRETARY
1A139	RECEPTIONIST/WAITING
1A200	H.A.C.
1A201	FEMALE TOILET
1A202	MALE TOILET
1A203	PRESCRIPTION RECEIVING
1A204	TOILET

NOTE: FOR VALVES & FITTINGS TO REHEAT COILS SEE DETAIL 18-H3. PIPE RUNOUTS TO INDIVIDUAL REHEAT COILS SHALL BE 3/4" UNLESS OTHERWISE NOTED.



These as-built or record drawings have been prepared, in part, on the basis of information compiled and furnished by others. The Engineer will not be responsible for any errors or omissions which have been incorporated into this document as a result.

Project Title <b>FIRST FLOOR PLAN, AREA A-1 DUCTWORK PIPING &amp; RADIATION 1/8" = 1'-0"</b>		Project No. <b>575-025</b>		Date <b>JULY 16, 1986</b>	
Building Number <b>1</b>		Checked <input type="checkbox"/>		Drawn <input type="checkbox"/>	
Location <b>VAMC-GRAND JUNCTION, COLORADO</b>		Drawing No. <b>1-H30</b>		Date <b>07</b>	

Joint Venture

**MCE Architects**

1780 S. Bellaire St., Ste. 800/Denver, CO 80222/Ph. 303-758-7858

DILLON-HUNT P.C. / ARCHITECTURE AND PROJECT MANAGEMENT

Approved: Project Director

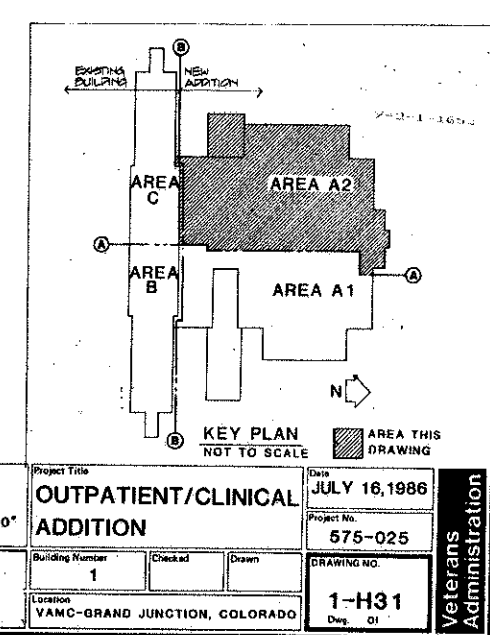
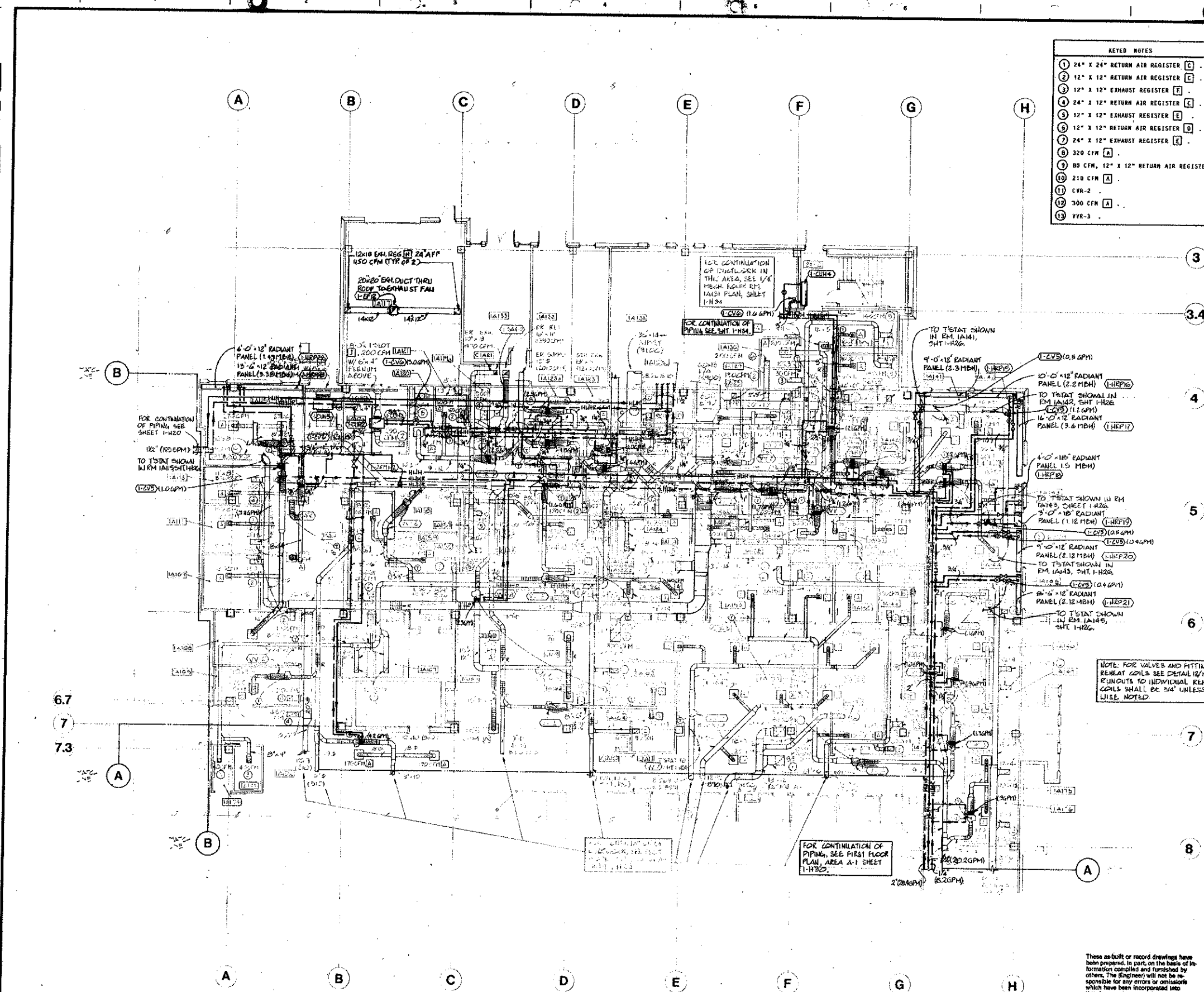
*[Signature]*

Veterans Administration



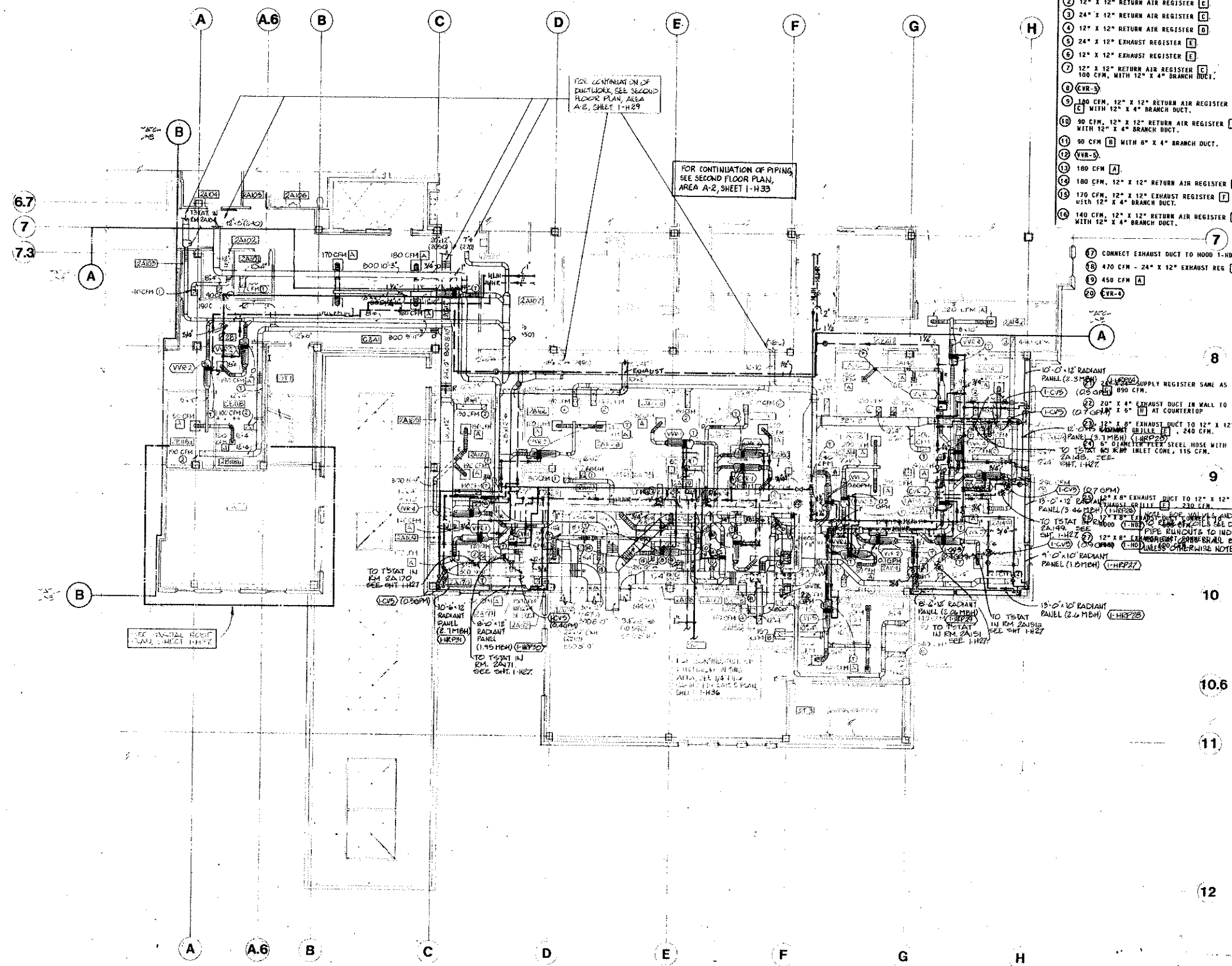
- KEYED NOTES
- 1 24" X 24" RETURN AIR REGISTER [E]
  - 2 12" X 12" RETURN AIR REGISTER [E]
  - 3 12" X 12" EXHAUST REGISTER [E]
  - 4 24" X 12" RETURN AIR REGISTER [E]
  - 5 12" X 12" EXHAUST REGISTER [E]
  - 6 12" X 12" RETURN AIR REGISTER [E]
  - 7 24" X 12" EXHAUST REGISTER [E]
  - 8 320 CFM [A]
  - 9 80 CFM, 12" X 12" RETURN AIR REGISTER [E]
  - 10 210 CFM [A]
  - 11 300 CFM [A]
  - 12 VVR-3

ROOM SCHEDULE		
ROOM NO.	ROOM NAME	
1A103	ELEC. CLOSET	
1A104	TELEPHONE CLOSET	
1A105	ELEC. CLOSET	
1A106	FEMALE TOILET	
1A107	MALE TOILET	
1A108	AGENT CASHIER	
1A109	TRAVEL	
1A110	N.A.C.	
1A111	CONTACT REP.	
1A112	UNA	
1A113	SLDG. MANAGEMENT SERVICE	
1A114	WAITING	
1A115	SCHEDULING	
1A116	VESTIBULE	
1A117	AMBULANCE ENCLOSURE	
1A117a	AMBULANCE ENTRANCE	
1A118	WHEELCHAIR STORAGE	
1A119	NURSES STATION	
1A119a	COMMON	
1A120	TOILET	
1A121	RECEPTION	
1A122	SECURITY EXAM.	
1A122a	TOILET	
1A123	LIFE SUPPORT	
1A123a	OBSERV/TREATMENT	
1A123b	SOILED UTILITY	
1A123c	CLEAN UTILITY	
1A124	DR-CALL	
1A124a	DR-CALL BATH	
1A125	SECRETARY WAITING	
1A126	NURSE SUPERVISION	
1A127	PHYSICIAN	
1A128	SOCIAL WORKER	
1A129	TELE. CLOSET	
1A130	ELEC. CLOSET	
1A131	MECHANICAL ROOM	
1A132	ELECTRIC SWITCHGEAR	
1A133	EMERGENCY GENERATOR	
1A134	MALE TOILET	
1A135	FEMALE TOILET	
1A136	STERILIZATION	
1A137	AMBULATORY & TEST	
1A138	SECOND OUTPATIENT PHYS.	
1A139	ENT. EXAM/TREATMENT	
1A140	EXAM/SCREEN	
1A141	EXAM/TREATMENT	
1A142	ENT. GENERAL SPACE	
1A143	ENT. EXAM/TREATMENT	
1A144	EXAM/TREATMENT	
1A145	EXAM/TREATMENT	
1A146	PROCEDURE ROOM	
1A147	MEDICATION & TREATMENT	
1A148	SOILED UTILITY	
1A149	CLEAN UTILITY	
1A150	EXAM/TREATMENT	
1A151	RECEPTION & CONTROL	
1A152	EXAM/TREATMENT	
1A153	ENT. RECEPTION & WAITING	
1A154	WAITING	
1A155	CONSULTATION	
1A156	CONSULTATION	
1A157	MALE TOILET	
1A158	FEMALE TOILET	
1A159	SUPERVISOR	
1A160	E.R. WAITING	
1A161	WAITING	
1A162	RECEPTION & CONTROL	
1A163	BED CONTROL	
1A164	EMBOSSE	
1A171	EXAM/TREATMENT	
1A174	N.A.C.	
1A175	NUTRITION THERAPY	
1A176	DIETITIAN	
C1A1	ELEVATOR LOBBY	
C1A2	CORRIDOR	
C1A3	CORRIDOR	
C1A4	CORRIDOR	
C1A5	CORRIDOR	
C1A6	CORRIDOR	
C1A7	CORRIDOR	
C1A8	CORRIDOR	
C1A9	CORRIDOR	
C1A10	CORRIDOR	
C1A11	CORRIDOR	
C1A12	CORRIDOR	
ST-2	STAIR NO. 2	



These as-built or record drawings have been prepared, in part, on the basis of information compiled and furnished by others. The Engineer will not be responsible for any errors or omissions which have been incorporated into this document as a result.

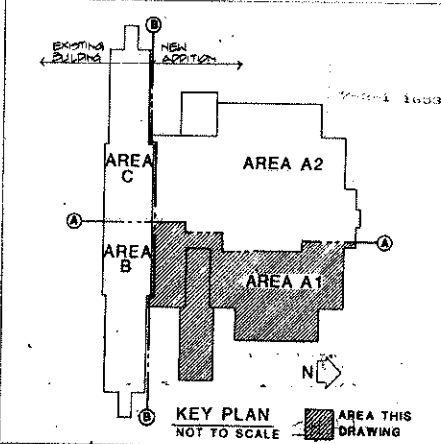
Project Title <b>OUTPATIENT/CLINICAL ADDITION</b>		Date <b>JULY 16, 1986</b>	
Building Number <b>1</b>		Project No. <b>575-025</b>	
Location <b>VAMC-GRAND JUNCTION, COLORADO</b>		Drawing No. <b>1-H31</b>	
Drawing Title <b>FIRST FLOOR PLAN AREA A-2 DUCTWORK PIPING &amp; RADIATION</b>		Scale <b>1/8"=1'-0"</b>	
Approved: Project Director <i>[Signature]</i>		Design: <i>[Signature]</i>	
Veterans Administration			



- KEYED NOTES**
- 1 12" X 12" EXHAUST REGISTER [F]
  - 2 12" X 12" RETURN AIR REGISTER [C]
  - 3 24" X 12" RETURN AIR REGISTER [C]
  - 4 12" X 12" RETURN AIR REGISTER [D]
  - 5 24" X 12" EXHAUST REGISTER [E]
  - 6 12" X 12" EXHAUST REGISTER [E]
  - 7 12" X 12" RETURN AIR REGISTER [C]
  - 8 100 CFM, 12" X 12" EXHAUST REGISTER [C]
  - 9 100 CFM, 12" X 12" RETURN AIR REGISTER [C]
  - 10 90 CFM, 12" X 12" RETURN AIR REGISTER [D]
  - 11 90 CFM, 12" X 12" RETURN AIR REGISTER [D]
  - 12 90 CFM, 12" X 12" RETURN AIR REGISTER [D]
  - 13 180 CFM [A]
  - 14 180 CFM, 12" X 12" RETURN AIR REGISTER [C]
  - 15 170 CFM, 12" X 12" EXHAUST REGISTER [F]
  - 16 140 CFM, 12" X 12" RETURN AIR REGISTER [C]
- 7 CONNECT EXHAUST DUCT TO HOOD 1-HB3.  
15 470 CFM - 24" X 12" EXHAUST REG [E]  
19 450 CFM [A]  
20 450 CFM [A]

ROOM SCHEDULE	
ROOM NO.	ROOM NAME
2A100	MECHANICAL ROOM
2A101	FEMALE TOILET
2A102	ELECTRICAL CLOSET
2A103	TELEPHONE CLOSET
2A104	SOCIAL WORKER
2A105	SOCIAL WORKER
2A106	SECRETARY WAITING
2A107	CHIEF SOCIAL WORK SERVICES
2A108	SOCIAL WORKER
2A109	MULTI-PURPOSE
2A110	WORK/DRESSING
2A111	SECRETARY
2A112	DIRECTOR VOLUNTARY SERVICES
2A113	UNASSIGNED
2A114	FEMALE TOILET
2A115	MALE TOILET
2A116	MECHANICAL ROOM
2A117	ELECTRICAL CLOSET
2A118	TELEPHONE CLOSET
2A119	2A
2A120	2A
2A121	PREVENTIVE DENTISTRY
2A122	WAITING
2A123	SECRETARY
2A124	CHIEF DENTAL SERVICE
2A125	ORAL EXAM.
2A126	PATIENT TOILET
2A127	X-RAY
2A128	X-RAY
2A129	BARRACKS
2A130	DENTAL HYGIENE
2A131	HMC
2A132	GENERAL TREATMENT
2A133	INSTRUMENT PREP.
2A134	GENERAL TREATMENT
2A135	LINEN/STORAGE
2A136	PROSTHETIC LAB
2A137	RECOVERY
2A138	ORAL SURGERY
2A139	CHIEF REHAB. MED.
2A140	SECRETARY
2A141	WAITING
2A142	ELEVATOR LOBBY
2A143	CORRIDOR
2A144	CORRIDOR
2A145	CORRIDOR
2A146	CORRIDOR
2A147	CORRIDOR
2A148	CORRIDOR
2A149	CORRIDOR
2A150	CORRIDOR
2A151	CORRIDOR
2A152	STAIR NO. 1
2A153	STAIR NO. 3
2A154	CORRIDOR (NEAR 2B110)

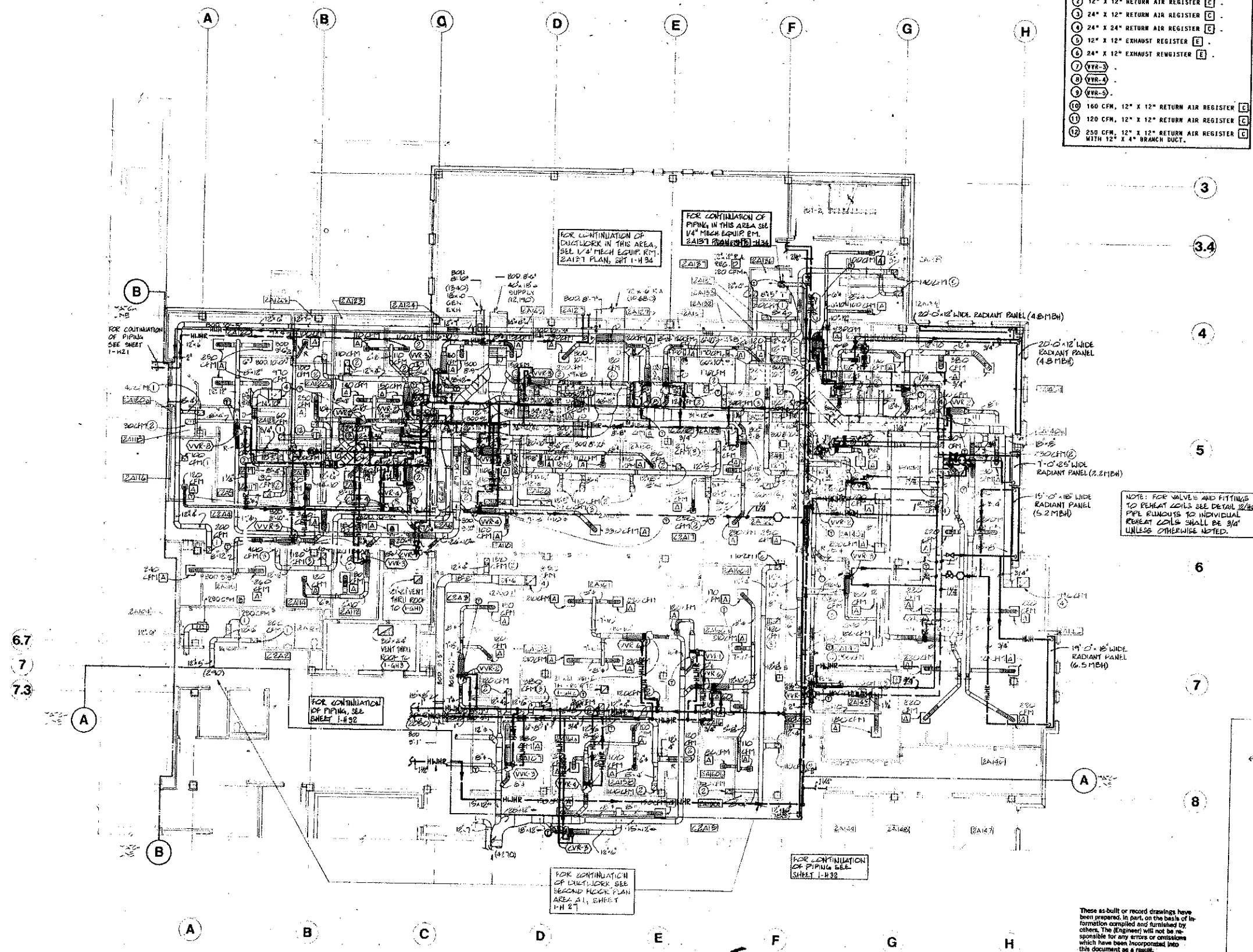
These as built or record drawings have been prepared, in part, on the basis of information compiled and furnished by others. The Engineer will not be responsible for any errors or omissions which have been incorporated into this document as a result.



Drawing Title <b>SECOND FLOOR PLAN AREA A-1 DUCTWORK PIPING &amp; RADIATION 1/8"=1'-0"</b>		Project Title <b>OUTPATIENT/CLINICAL ADDITION</b>	
Drawing No. <b>575-025</b>		Date <b>JULY 16, 1986</b>	
Building Number <b>1</b>		Checked <b>[Signature]</b>	
Location <b>VAMC-GRAND JUNCTION, COLORADO</b>		Drawing No. <b>1-H32</b>	

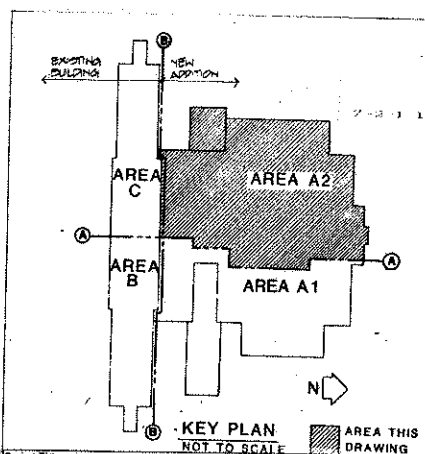
VA FORM 627, FEB. 1982

1 2 3 4 5 6 7 8 9 10 11 12



KEYED NOTES	
①	12" X 12" EXHAUST REGISTER [F]
②	12" X 12" RETURN AIR REGISTER [C]
③	24" X 12" RETURN AIR REGISTER [C]
④	24" X 24" RETURN AIR REGISTER [C]
⑤	12" X 12" EXHAUST REGISTER [E]
⑥	24" X 12" EXHAUST REGISTER [E]
⑦	VVR-3
⑧	VVR-4
⑨	VVR-5
⑩	160 CFM, 12" X 12" RETURN AIR REGISTER [E]
⑪	120 CFM, 12" X 12" RETURN AIR REGISTER [C]
⑫	250 CFM, 12" X 12" RETURN AIR REGISTER [C] WITH 12" X 4" BRANCH DUCT.

ROOM SCHEDULE		
ROOM NO.	ROOM	NAME
2A104	AREA "C" ELEC. CLOSET	
2A105	MALE TOILET	
2A107	RECEPTION/MAIL BISTR.	
2A108	WORK ROOM	
2A109	DECEDENT AFFAIRS	
2A110	BUILDING MANAGEMENT SERV.	
2A111	COMMON VIEWING	
2A112	STORAGE	
2A113	SOILED UTILITY	
2A114	CHIEF TECHNICIAN	
2A115	GENERAL PROCEDURE	
2A116	CLEAN UTILITY	
2A117	DRESS	
2A118	H.A.C.	
2A119	DRESS	
2A120	SPECIAL PROCEDURE	
2A120a	DRESS	
2A120b	SCUB	
2A120c	TOILET	
2A122	PHYSICIAN INTERNAL MEDICINE	
2A123	RECEPTION/WAITING	
2A124	AUDIO/VIDEO OFFICE	
2A125	SPEECH PATH. OFFICE	
2A126	PHYSICIAN INTERNAL MEDICINE	
2A127	SPEECH PATH. GROUP THERAPY	
2A128	PHYSICIAN INTERNAL MEDICINE	
2A129	INSTRUMENT CALIBRATION & STORAGE	
2A130	PHYSICIAN INTERNAL MEDICINE	
2A131	INTERNAL MEDICINE	
2A132	INTERNAL MEDICINE	
2A133	PHYSICIAN INTERNAL MEDICINE	
2A134	PHYSICIAN INTERNAL MEDICINE	
2A135	ELECTRIC CLOSET	
2A136	TELEPHONE CLOSET	
2A137	MECHANICAL	
2A138	MALE TOILET	
2A139	FEMALE TOILET	
2A140	LIBRARY/AUDIO VISUAL	
2A140a	WORK ROOM	
2A140b	CIRCULATION	
2A140c	MEDIA CONFERENCE	
2A140g	PATIENT LIBRARY	
2A140h	CHIEF LIBRARY SERVICE	
2A141	H.A.C.	
2A142	CLASS ROOM	
2A143	CLASS ROOM	
2A158	SWITCHBOARD	
2A159	OFFICE MEDICAL RECORDS	
2A160	GENERAL OFFICE	
2A160a	SECRETARY WAITING	
2A160b	SUPERVISION	
2A160c	ASSISTANT CHIEF MAS.	
2A160d	CHIEF MAS.	
2A161	MEDICAL RECORDS	
2A161a	WORK RECORD REVIEW	
2A162	GENERAL OFFICE	
2A163	SUPERVISION/TRANSCRIPTIONISTS	
2A164	TELETYPE	
C2A2	CORRIDOR	
C2A3	CORRIDOR	
C2A4	CORRIDOR	
C2A5	CORRIDOR	
C2A6	CORRIDOR	
C2A7	CORRIDOR	
C2A8	CORRIDOR	
C2A9	CORRIDOR	
C2A10	CORRIDOR	
C2A16	CORRIDOR	
C2A17	CORRIDOR	
ST-2	STAIR NO. 2	



These as-built or record drawings have been prepared, in part, on the basis of information compiled and furnished by others. The (Engineer) will not be responsible for any errors or omissions which have been incorporated into this document as a result.