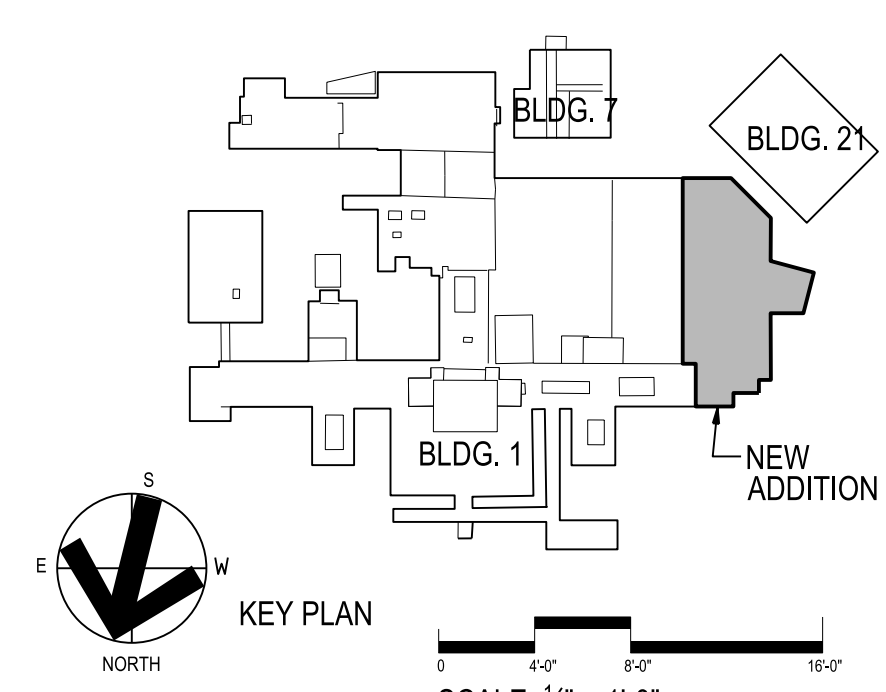


- ① MOVE THE SPRINKLER RISER AND DRAIN RISER TO THE EAST SIDE OF THE STAIR CONNECTING THE LOWER LEVEL TO LEVEL 2. MAINTAIN THE EXISTING ZONE VALVE FOR LEVEL 1 SERVING THE EXISTING CLINIC AREAS.
- ② REMOVE ALL THE SPRINKLER HEADS IN THE ZONE 1-1.7 AND THE PIPING INCLUDING THE MAIN SPRINKLER PIPE RUNS. PREPARE THE NEW BRANCH PIPING TO MAINTAIN THE EXISTING ROOM LAYOUT AND REMOVE THE SPRINKLERS SHOWN ON THE 1-F2 DRAWING. COORDINATE WITH THE DUCTWORK, PIPING, AIR TERMINAL BOXES AND ELECTRICAL FOR NEW LAYOUT.
- ③ REMOVE ALL THE SPRINKLER HEADS IN THE ZONE 1-1.3 AND THE PIPING BACK TO THE MAIN SPRINKLER PIPE RUNS. PREPARE THE NEW BRANCH PIPING TO CONFORM TO THE NEW ROOM LAYOUT PLANS AND THE EXISTING FIRE SHOWERS.



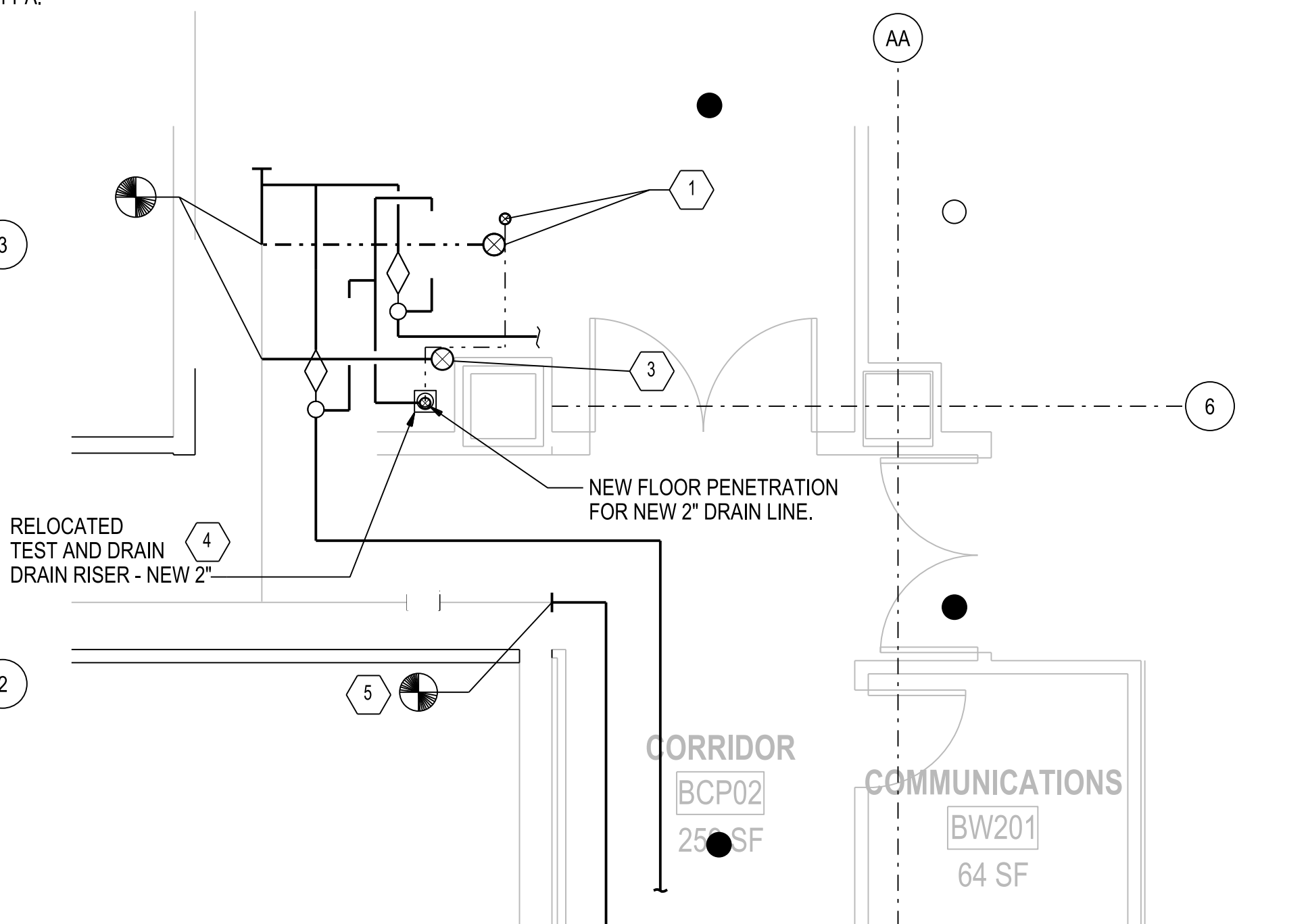
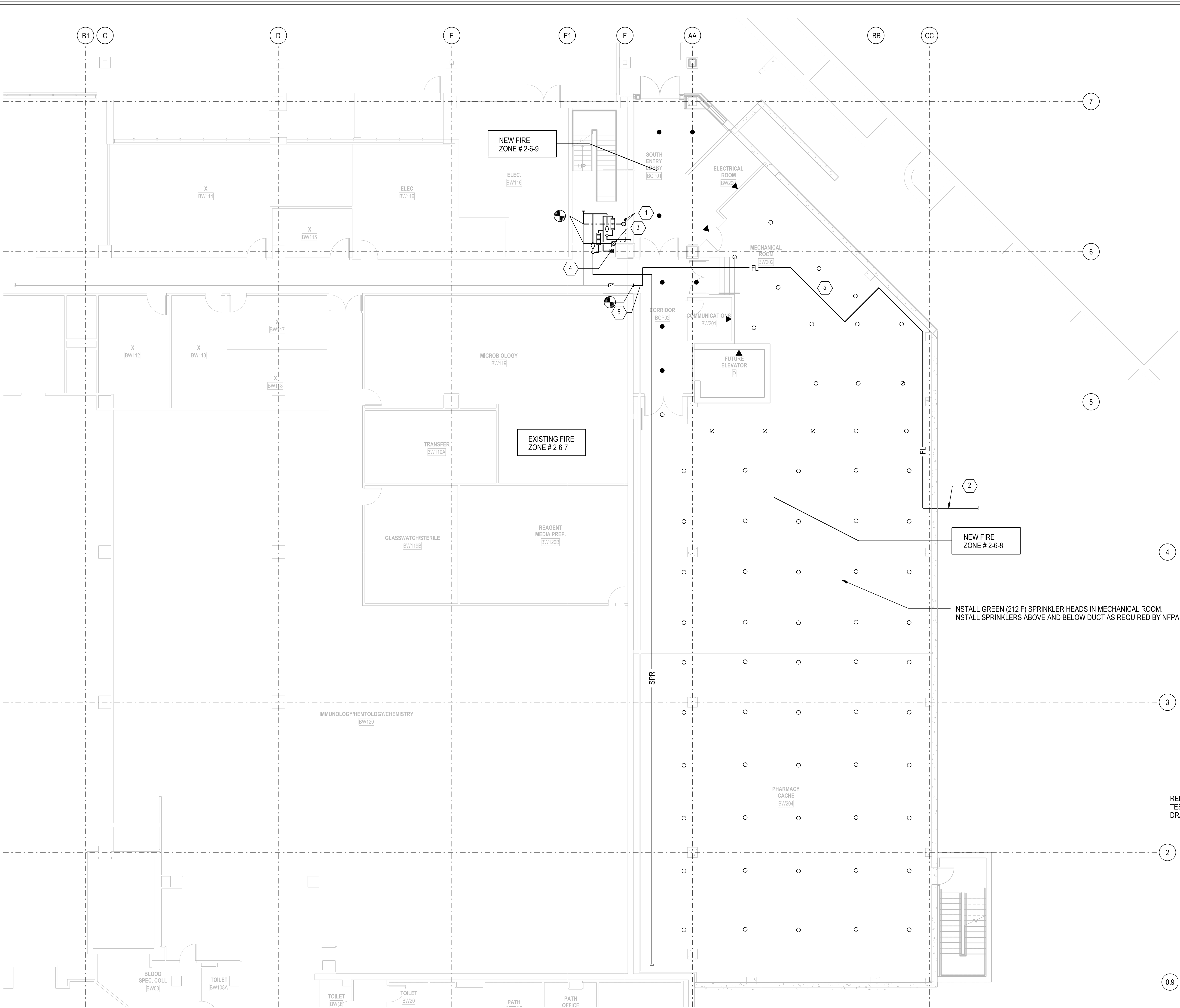
<div><div>HEERY</div><div>design</div></div>	project number 11-25503	Drawing Title FIRE PROTECTION DEMOLITION - LEVEL 1			Project Title EXPAND BLDG. 1 FOR PACT AMBULATORY CARE & RADIOLOGY			Date 12/15/2014		<div><div><div></div><div></div></div><div>Office of Facilities</div><div><div></div><div></div></div><div>Department of Veterans Affairs</div></div>	<div><div></div><div></div></div> <div>Department of Veterans Affairs</div>
		CONSTRUCTION DOCUMENTS			Building No. BLDG 1		Checked AGW	Drawn DRB	Project No. 636-201		
Heery International Inc. 125 South Dubuque Street, Suite 500, Iowa City, IA 52240-4003 319.354.4700					Location ICVA HEALTH CARE SYSTEM			DRAWING NO. 1-F2			

GENERAL FIRE PROTECTION NOTES:

- A. ALL WORK WITHIN EXISTING FACILITY SHALL BE COORDINATED WITH THE OWNER. PROPER DUST AND DIRT BARRIERS SHALL BE CONSTRUCTED FOR SEPARATION WITH THE WORK AREA IN THE HOSPITAL. SEPARATION PARTITIONS SHALL BE MADE OF STUDS AND GYPSUM BOARD, TAPPED, AND CAULKED. PARTITION SHALL INCLUDE A DOOR. INFECTION CONTROL SHALL BE CLASS III.
- B. PIPE AND REPIPE SPRINKLER HEADS TO ENSURE THAT ALL SPRINKLER HEADS ARE SERVED FROM THE SAME FIRE ALARM ZONE. BE SURE THAT ALL SPRINKLER PIPING FOR EACH ZONE SERVES ONLY THAT SAME ZONE.
- C. ALL PIPING THROUGH FLOORS TO HAVE CORE DRILLED PENETRATIONS AND PROVIDED WITH FIRE STOPPING SLEEVES.
- D. REFER TO SHEET 1-A8 FOR LIST OF DEDUCT ALTERNATES.
- E. CENTER SPRINKLER HEADS WITHIN CEILING TILES BOTH WAYS. SPRINKLER HEADS QUICK RESPONSE, RECESSED TYPE, NO COVER.

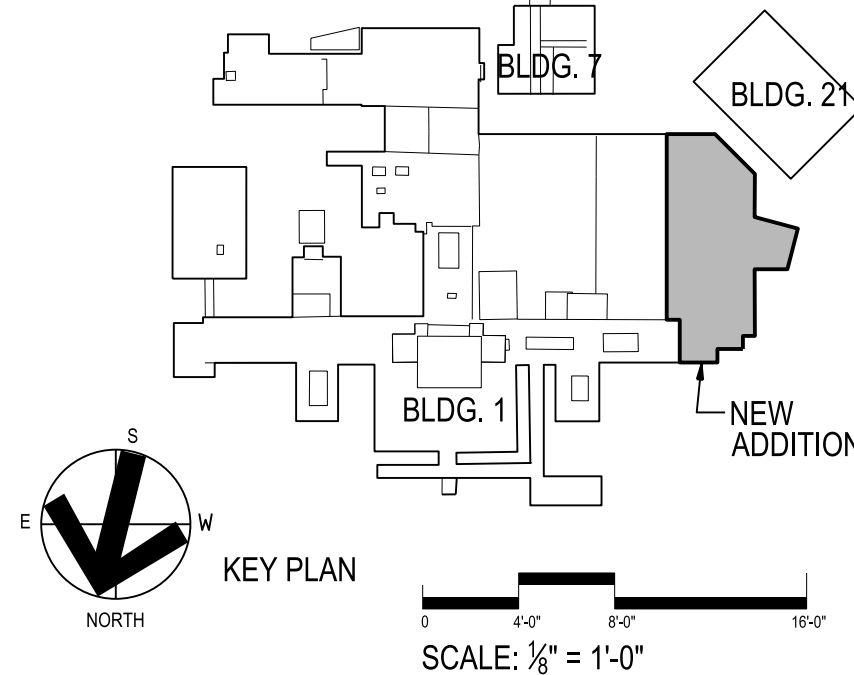
KEYED FIRE PROTECTION NOTES:

- 1 RELOCATE THE 6" FIRE RISER AND TEST AND DRAIN RISER - 2" TO OTHER SIDE OF STAIRS TO CONNECT WITH THE RISER LOCATION ON LEVEL 1.
- 2 ROUTE THE 6" FIRE DEPARTMENT LINE TO THE NEW LEVEL 1 GRADE LOCATION. SEE THE SITE PLAN FOR LOCATION.
- 3 NEW FIRE SPRINKLER RISER 6" RELOCATED.
- 4 NEW FLOOR PENETRATION FOR NEW 2" DRAIN LINE.
- 5 ROUTE THE 6" FIRE DEPARTMENT LINE THROUGH THE NEW LOWER LEVEL CEILING AND OUT TO THE NEW LEVEL 1 GRADE LOCATION. SEE THE SITE PLAN FOR LOCATION.



3 ENLARGED FIRE PROTECTION PLAN
1/4" = 1'-0"

1 ZONE A
1/2" = 1'-0"



HEERY design
Heery International Inc.
125 South Dubuque Street,
Suite 500,
Iowa City, IA 52240-4003
319.354.4700

project number
11-25503

Drawing Title
**FIRE PROTECTION
PLAN - LOWER LEVEL**

CONSTRUCTION DOCUMENTS

Project Title
**EXPAND BLDG. 1 FOR PACT
AMBULATORY CARE & RADIOLOGY**

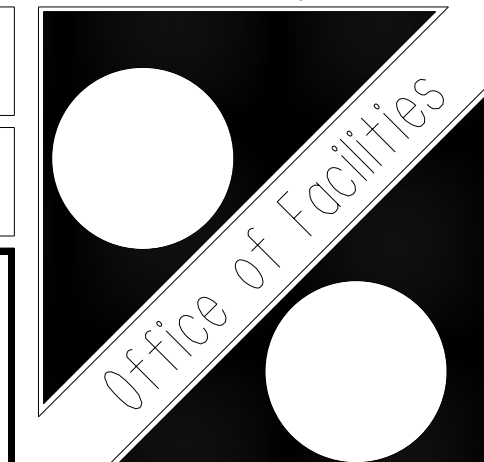
Building No.
BLDG 1

Location
ICVA HEALTH CARE SYSTEM

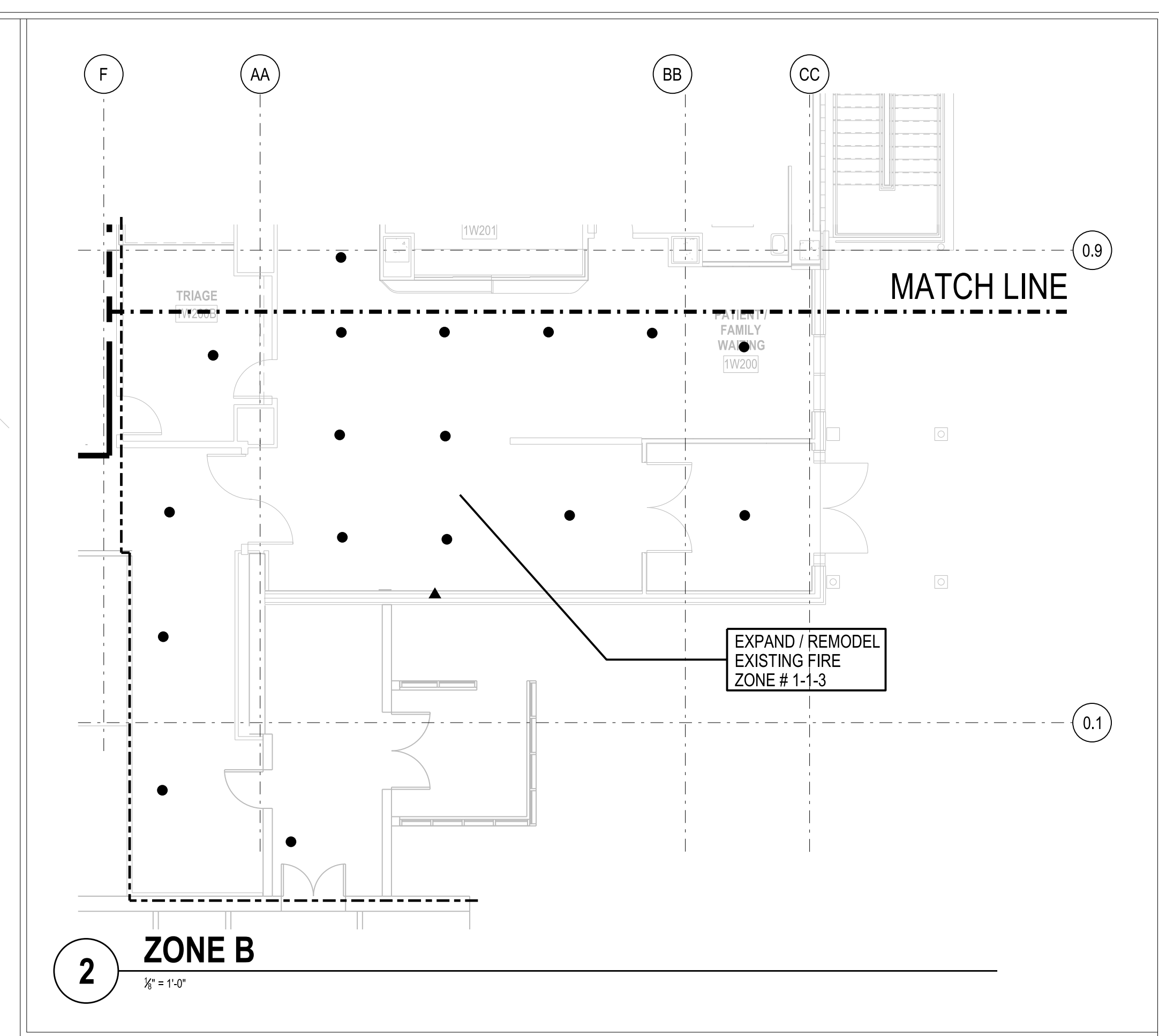
Date
12/15/2014

Project No.
636-201

DRAWING NO.
1-F3



Department of
Veterans Affairs

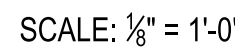


- A. ALL WORK WITHIN EXISTING FACILITY SHALL BE COORDINATED WITH THE OWNER. PROPER DUST AND DIRT BARRIERS SHALL BE CONSTRUCTED FOR SEPARATION WITH THE WORK AREA IN THE HOSPITAL. SEPARATION PARTITIONS SHALL BE MADE OF STUDS AND GYPSUM BOARD, TAPPED, AND CAULKED. PARTITION SHALL INCLUDE A DOOR. INFECTION CONTROL SHALL BE CLASS III.
- B. PIPE AND REPIPE SPRINKLER HEADS TO ENSURE THAT ALL SPRINKLER HEADS ARE SERVED FROM THE SAME FIRE ALARM ZONE TO BE SURE THAT ALL SPRINKLER PIPING FOR EACH ZONE SERVES ONLY THAT SAME ZONE.
- C. ALL PIPING THROUGH FLOORS TO HAVE CORE DRILLED PENETRATIONS AND PROVIDED WITH FIRE STOPPING SLEEVES.
- D. REFER TO SHEET 1-A8 FOR LIST OF DEDUCT ALTERNATES.
- E. CENTER SPRINKLER HEADS WITHIN CEILING TILES BOTH WAYS. SPRINKLER HEADS QUICK RESPONSE, RECESSED TYPE, NO COVER.
- F. ALL CEILING MOUNTED ITEMS BETWEEN GRIDLINES "2" AND "5", AND FROM "10" TO 32 FT EAST OF "10", SHALL BE RIGIDLY SUPPORTED TO MINIMIZE MOTION DURING FUTURE MRI OPERATION. HANGERS SHALL BE FABRICATED FROM MATERIALS SUCH AS UNISTRUT, HANGERS SHALL BE BRACED TO PREVENT RACKING, FERROUS DUCT AND PIPE SHALL BE RIGIDLY FASTENED TO HANGER FRAME AND THERMALLY BROKEN, NON-FERROUS DUCT, PIPE, AND HANGERS MAY BE USED INSTEAD OF RIGID SUPPORTS. FERROUS LOOSE HANGER SYSTEMS SUCH AS HANGER STRAP AND ALL-THREAD ROD ARE PROHIBITED.

- 1 REINSTALL THE RESERVED QUICK RESPONSE SPRINKLER HEADS WITHIN THE PRIMARY CARE CLINIC AREA (REMODELED AREA OF LEVEL ONE). REINSTALL ONLY SPRINKLER HEADS WITH A 2012 DATE AND LATER, AND REPLACE ALL OLDER THAN 2012. WE MAINS TO REMAIN AS NEEDED FOR INSTALLATION OF NEW/EXISTING FIRE SPRINKLER HEADS INTO NEW CEILING. REPLACE PIPING WHERE NEEDED TO ACCOMMODATE DUCT AND OTHER PIPING.
- 2 INSTALL INSTITUTIONAL/SECURITY SPRINKLER HEAD IN PSYCH ROOM, FLUSH MOUNT AND TAMPERS RESISTANT.
- 3 REINSTALL EXISTING HOSE VALVES ONTO RELOCATED RISER. TYPICAL ALL LEVELS.
- 4 EXTEND UTILITY CHASE SPRINKLER COVERAGE INTO CHASE ADDITION.



<div><div>HEERY</div><div>design</div></div>	project number 11-25503	Drawing Title FIRE PROTECTION PLAN - LEVEL 1		Project Title EXPAND BLDG. 1 FOR PACT AMBULATORY CARE & RADIOLOGY		Date 12/15/2014	<div><div>SCALE: 1/8" = 1'-0"</div><div>Office of Facilities</div></div>	<div>Department of Veterans Affairs</div>
		CONSTRUCTION DOCUMENTS		Building No. BLDG 1	Checked AGW	Drawn DRB		
Heery International Inc. 125 South Dubuque Street, Suite 500, Iowa City, IA 52240-4003 319.354.4700			Location ICVA HEALTH CARE SYSTEM		DRAWING NO. 1-F4			

Department of
Veterans Affairs