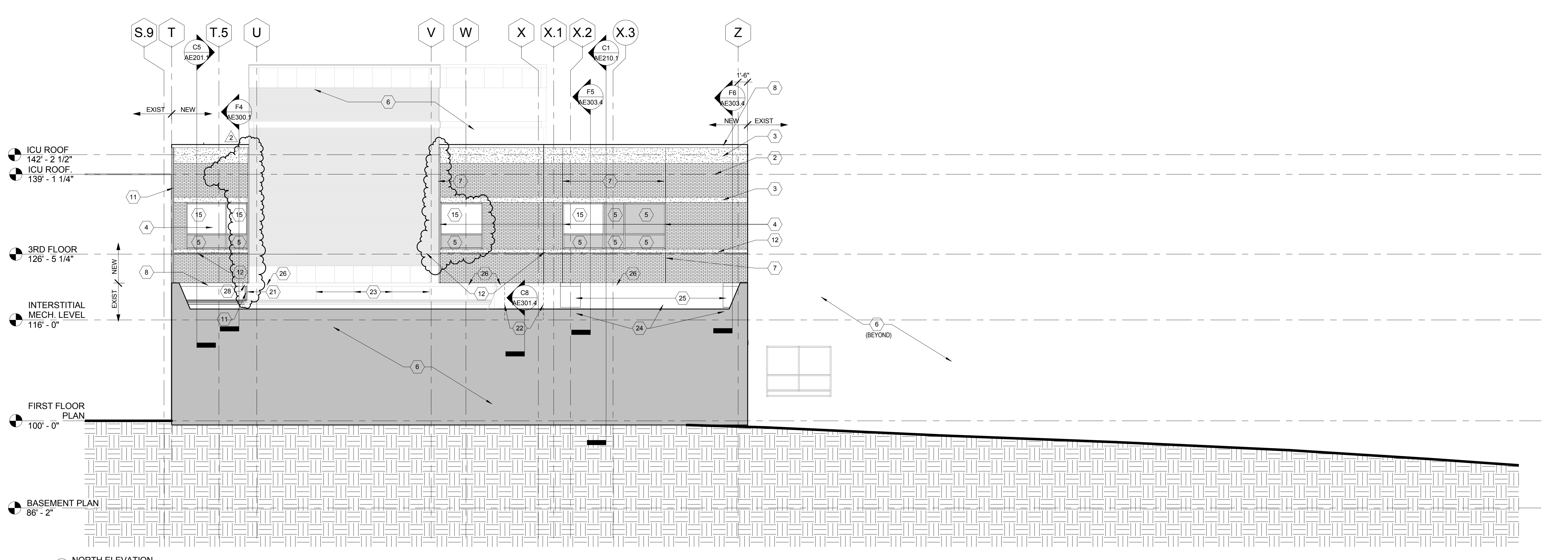
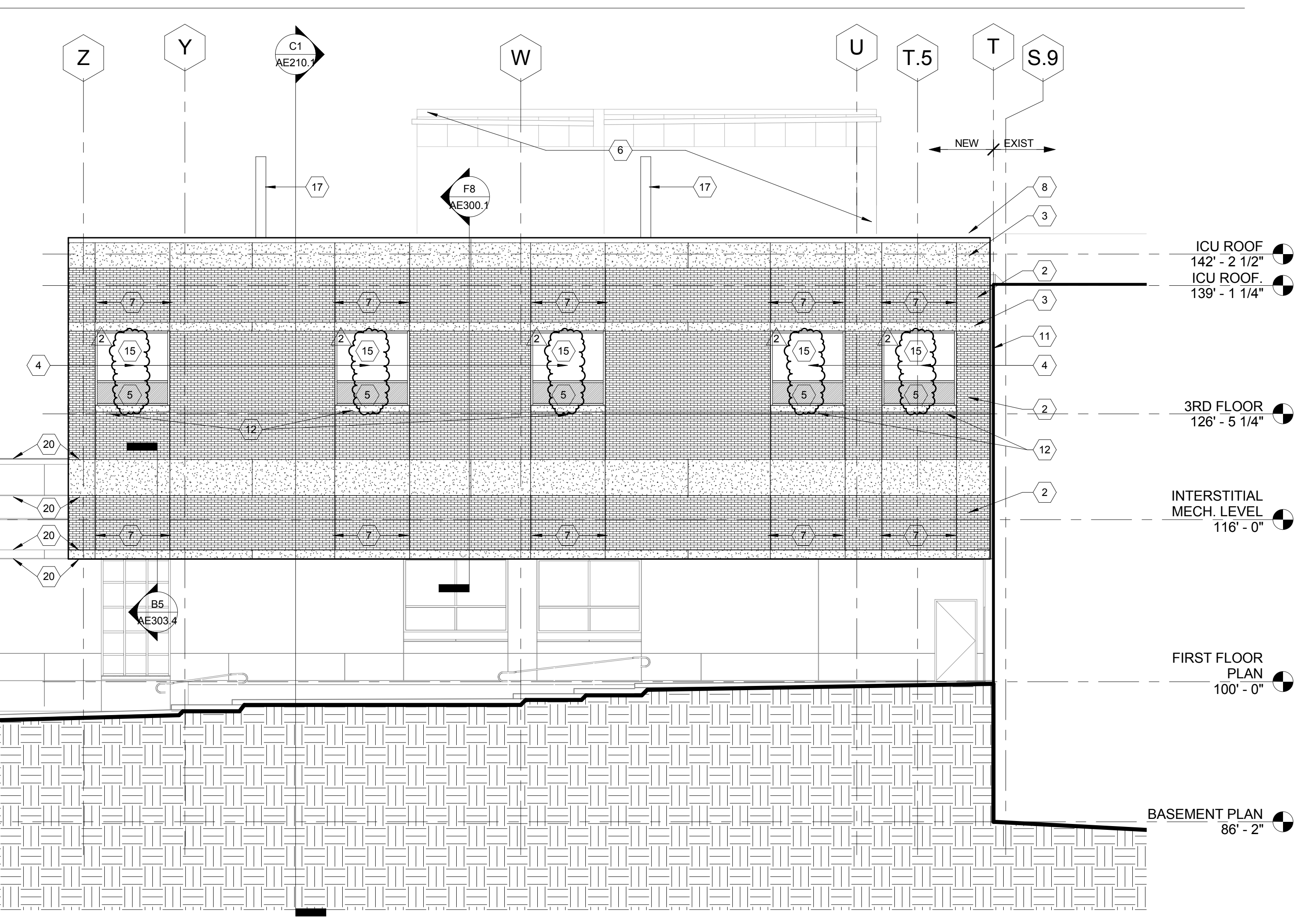


three inches = one foot  
 one and one half inches = one foot  
 one inch = one foot  
 three quarters inch = one foot  
 one half inch = one foot  
 three eighths inch = one foot  
 one quarter inch = one foot  
 one eighth inch = one foot  
 one sixteenth inch = one foot



C1 NORTH ELEVATION  
1/8" = 1'-0"



F1 SOUTH ELEVATION  
1/8" = 1'-0"

- KEYED NOTES - EXTERIOR ELEVATIONS**
- 2 FACE BRICK TO MATCH MRI / OR ADDITION
  - 3 LIMESTONE TO MATCH MRI / OR ADDITION
  - 4 ALUMINUM GLASS CURTAINWALL SYSTEM
  - 5 SPANDREL GLASS PANEL
  - 6 EXISTING CONSTRUCTION TO REMAIN
  - 7 BRICK EXPANSION JOINT
  - 8 STAINLESS STEEL COPING
  - 10 LOUVER -- SEE MECHANICAL
  - 11 EXPANSION JOINT
  - 12 LIMESTONE SILL
  - 14 CONCRETE CURB
  - 15 INTEGRAL BLINDS
  - 16 ROOFING MEMBRANE / FLASHING
  - 17 EXHAUST STACK
  - 18 LOUVER BEYOND
  - 19 FAN - SEE MECHANICAL
  - 20 ALIGN
  - 21 EDGE OF EXISTING PARAPET RETURN
  - 22 FACE OF PARAPET BEYOND / EXTENT OF OPEN LIGHTWELL
  - 23 EXISTING JOINTS IN LIMESTONE PARAPET CLADDING BEYOND, TYP.
  - 24 EXISTING SLOPED ROOFING OVER KICKERS
  - 25 NEW ROOFING TO MATCH EXISTING
  - 26 PROTECT EXISTING LIMESTONE COPING TO REMAIN, TYP.
  - 27 PATCH BRICK AND LIMESTONE WHERE REMOVED FOR COLUMN INSTALLATION. TOOTH NEW INTO EXISTING WITH MATERIAL NEW OR SALVAGED EXISTING TO MATCH EXISTING
  - 28 COPING EXPANSION JOINT

- ELEVATION GENERAL NOTES**
- A. NOT ALL KEYED NOTES USED ON EACH SHEET
  - B. CONTRACTOR TO FIELD VERIFY EXISTING FINISH FLOOR ELEVATIONS. ELEVATIONS NOTED ON DRAWINGS ARE APPROXIMATE. NEW FINISH FLOOR ELEVATIONS SHOULD MATCH EXISTING.

- GLAZING LEGEND**
- IG-1
  - IG-2

FULLY SPRINKLERED  
CONSTRUCTION DOCUMENTS

No.	Date	Revisions
2	2/9/15	Amendment #6
1	1/14/15	Amendment #4

**CONSULTANTS:**

<p><b>STRUCTURAL ENGINEER:</b> KPF CONSULTING ENGINEERS - ST. LOUIS 1630 DES PERES RD, SUITE 100 SAINT LOUIS, MO 63113</p>	<p><b>PLUMBING:</b> 303RD ENGINEERING GROUP, LLC 1935 ARSENAL STREET ST. LOUIS, MO 63118</p>	<p><b>LIFE SAFETY/FIRE PROTECTION:</b> CODE CONSULTANTS, INC. 2043 WOODLAND PARKWAY, SUITE 300 ST. LOUIS, MO 63116</p>	<p><b>COMMISSIONING:</b> ZODIAC INTERNATIONAL 16100 CHESTERFIELD PARKWAY, SUITE 365 CHESTERFIELD, MO 63017</p>
<p><b>MECHANICAL/ELECTRICAL:</b> KWAME BUILDING GROUP 1204 WASHINGTON AVE, SUITE 200 ST. LOUIS, MO 63141</p>	<p><b>ESTIMATING:</b> KWAME BUILDING GROUP 1204 WASHINGTON AVE, SUITE 200 ST. LOUIS, MO 63103</p>	<p><b>ACOUSTICAL ENGINEERS:</b> ACUSTICCONTROL, LLC 1709 WASHINGTON AVENUE, LOFT 300 ST. LOUIS, MO 63103</p>	<p><b>ENVIRONMENTAL:</b> ENVIRONMENTAL CONSULTANTS, LLC #6 MEADOW HEIGHTS PROFESSIONAL PARK DR. COLLINSVILLE, IL 62294</p>

**ARCHITECT/ENGINEERS:**

**CHRISTNER**

ARCHITECTS | DESIGNERS | PLANNERS | LANDSCAPE ARCHITECTS

188 N MERAMEC, SUITE 400 | ST. LOUIS, MISSOURI 63105  
TEL 314 726 2027 | FAX 314 726 2028 |  
CHRISTNERINC.COM

THE SEAL (S) AND SIGNATURE(S) APPLY ONLY TO THE DOCUMENT TO WHICH THEY ARE AFFIXED, AND WE EXPRESSLY DISCLAIM ANY RESPONSIBILITY FOR ALL OTHER PLANS, SPECIFICATIONS, ESTIMATES, REPORTS, OR OTHER DOCUMENTS OR INSTRUMENTS RELATING TO OR INTENDED TO BE USED FOR ANY PART OF PARTS OF THE PROJECT.  
© COPYRIGHT 2012 CHRISTNER INC.

Drawing Title	
<b>BUILDING ELEVATIONS - DEDUCT ALTERNATES</b>	
4,5	
DIRECTOR OF SPECIALTY CARE	INJECTION CONTROL PRINCIPAL/OWNER
CHIEF ENGINEER	ASSISTANT DIRECTOR
ASSOCIATE DIRECTOR OF PATIENT SERVICES	CHIEF OF STAFF
ASSOCIATE DIRECTOR	MEDICAL CENTER DIRECTOR

Project Title	
<b>INTENSIVE CARE UNIT</b>	
Project Number	589-330
Building Number	1
Location	
<b>HARRY S. TRUMAN VAMC</b>	
Date	9/4/14
Checked	JW
Drawn	DC
Approved	Approver
Dwg. No.	AE200.1
Dwg. 26 of 201	

**Office of Construction and Facilities Management**

Department of Veterans Affairs