



Office of
Construction
and Facilities
Management

VA U.S. Department
of Veterans Affairs

CONSULTANTS:



417 Fifth Ave, New York, NY 10016 . 212-725-6800

ARCHITECT/ENGINEERS:



Henningson, Durham & Richardson, Architecture and Engineering, P.C.
500 Seventh Ave, 11th Floor, New York, NY 10018 . 212-904-1212

Drawing Title

**PARTIAL GROUND FLOOR SIGNAGE PLAN -
PART 1**

Approved: Project Director

Project Title	VA NY HARBOR HEALTHCARE SYSTEM MANHATTAN CAMPUS / GROUND FLOOR PHASE 2B
---------------	---

423 E 23RD STREET, NEW YORK, NY 10010

Date
08 / 25 / 2014

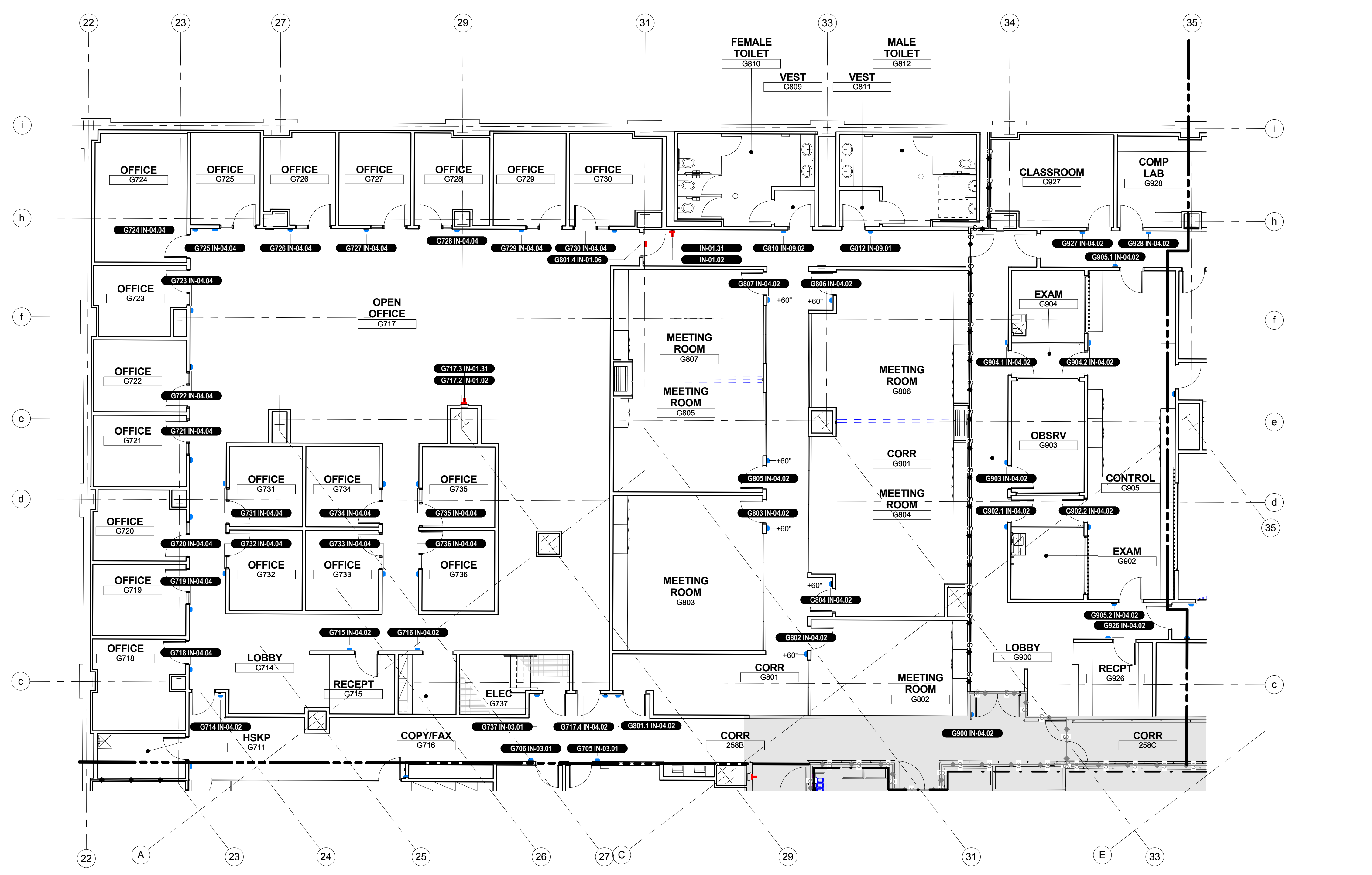
Checked	JZ
---------	----

Drawn	RS/LT
-------	-------

Project Number	228727
Building Number	1, 2, & 6
Drawing Number	AG1001

VA U.S. Department
of Veterans Affairs

three inches = one foot
one and one half inches = one foot
one inch = one foot
three quarters inch = one foot
one half inch = one foot
three eighths inch = one foot
one quarter inch = one foot
one eighth inch = one foot
one eighth inch = one foot



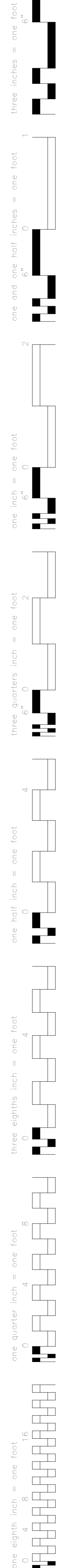
F1 PARTIAL GROUND FLOOR SIGNAGE PLAN - PART 2
1/8"= 1'-0"

KEY PLAN:

FULLY SPRINKLERED

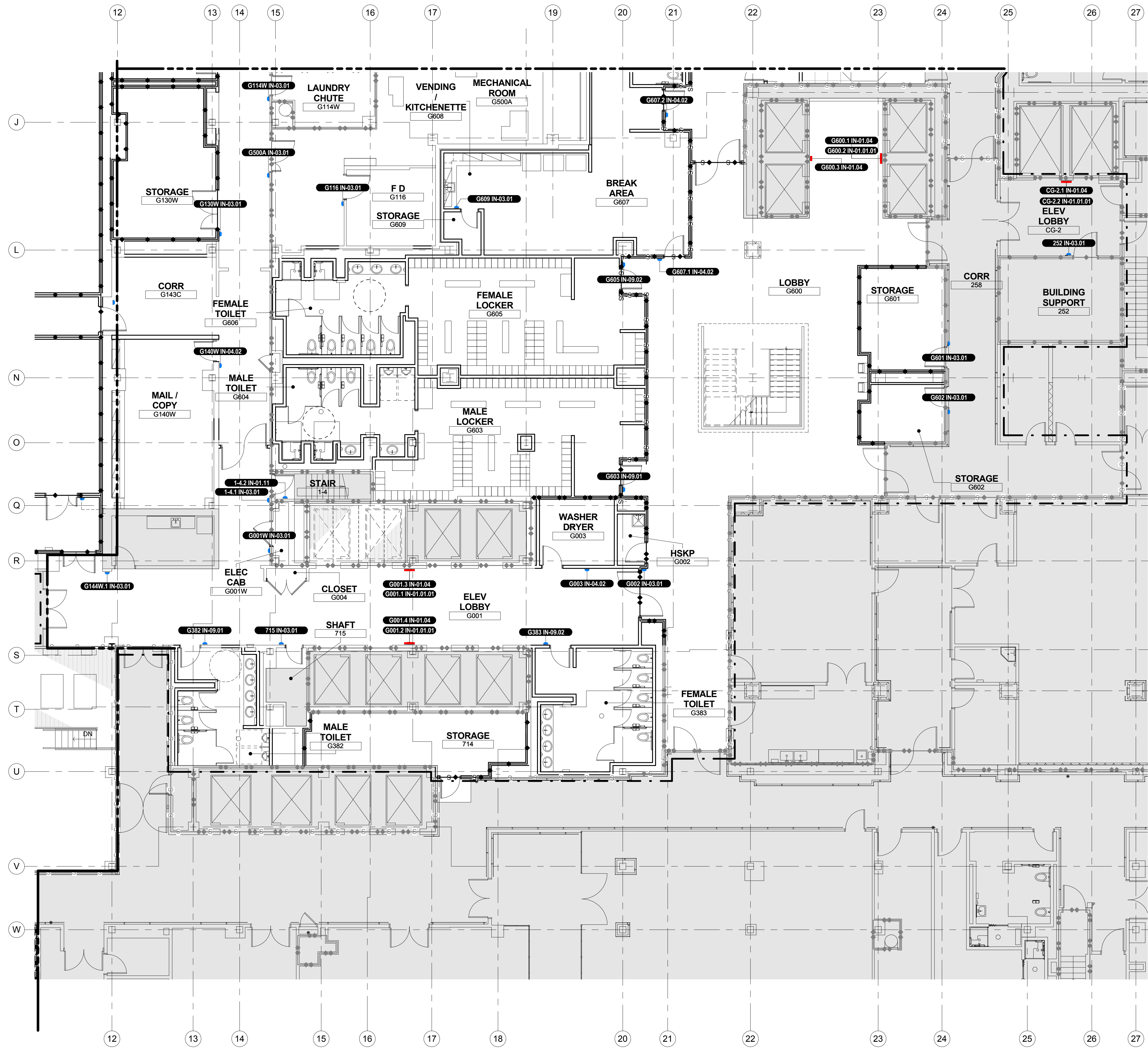
Project Number 228727	Office of Construction and Facilities Management
Building Number 1, 2, & 6	
Drawing Number AG1002	VA U.S. Department of Veterans Affairs

CONSULTANTS:  SHEN MILSOM WILKE 417 Fifth Ave, New York, NY 10016 212-725-6800		ARCHITECT/ENGINEERS:  Henningson, Durham & Richardson, Architecture and Engineering, P.C. 500 Seventh Ave, 11th Floor, New York, NY 10018 212-904-1212		Drawing Title PARTIAL GROUND FLOOR SIGNAGE PLAN - PART 2	Project Title VA NY HARBOR HEALTHCARE SYSTEM MANHATTAN CAMPUS / GROUND FLOOR PHASE 2B	Project Number 228727	Office of Construction and Facilities Management	
ISSUE FOR BID Revisions:		Approved: Project Director		Location 423 E 23RD STREET, NEW YORK, NY 10010	Location 423 E 23RD STREET, NEW YORK, NY 10010	Building Number 1, 2, & 6		
10/31/2014 Date				Date 08 / 25 / 2014	Checked JZ	Drawn RSLT		

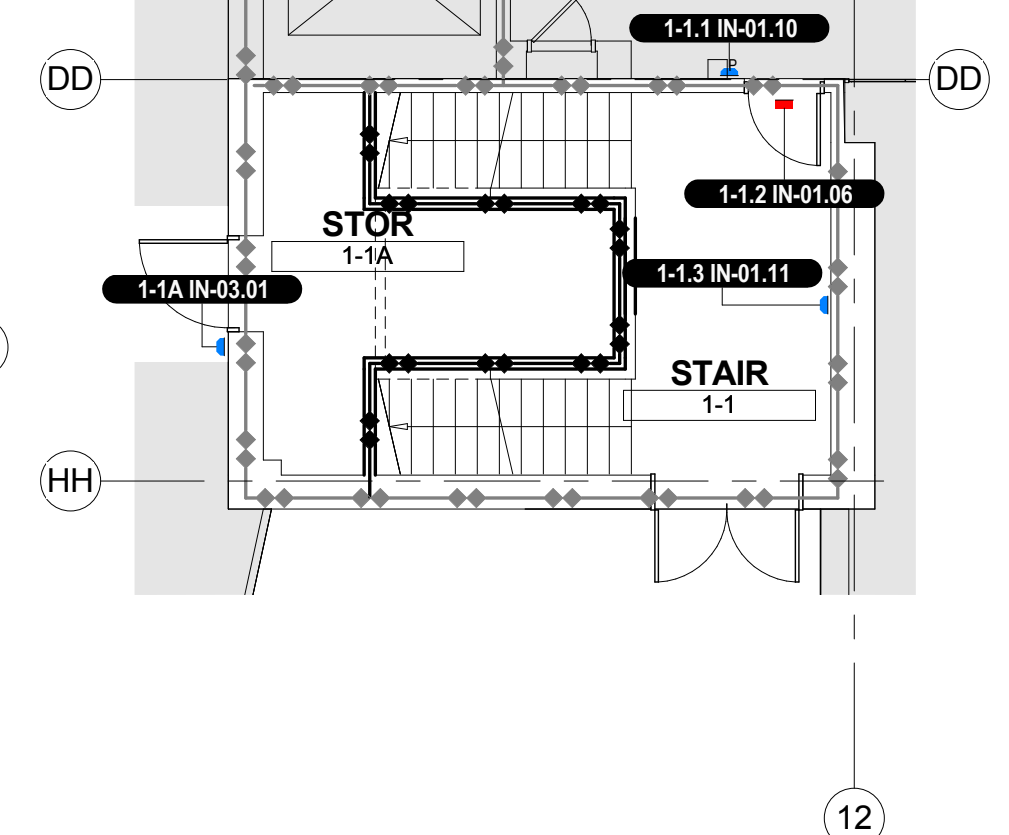


VA U.S. Department
of Veterans Affairs

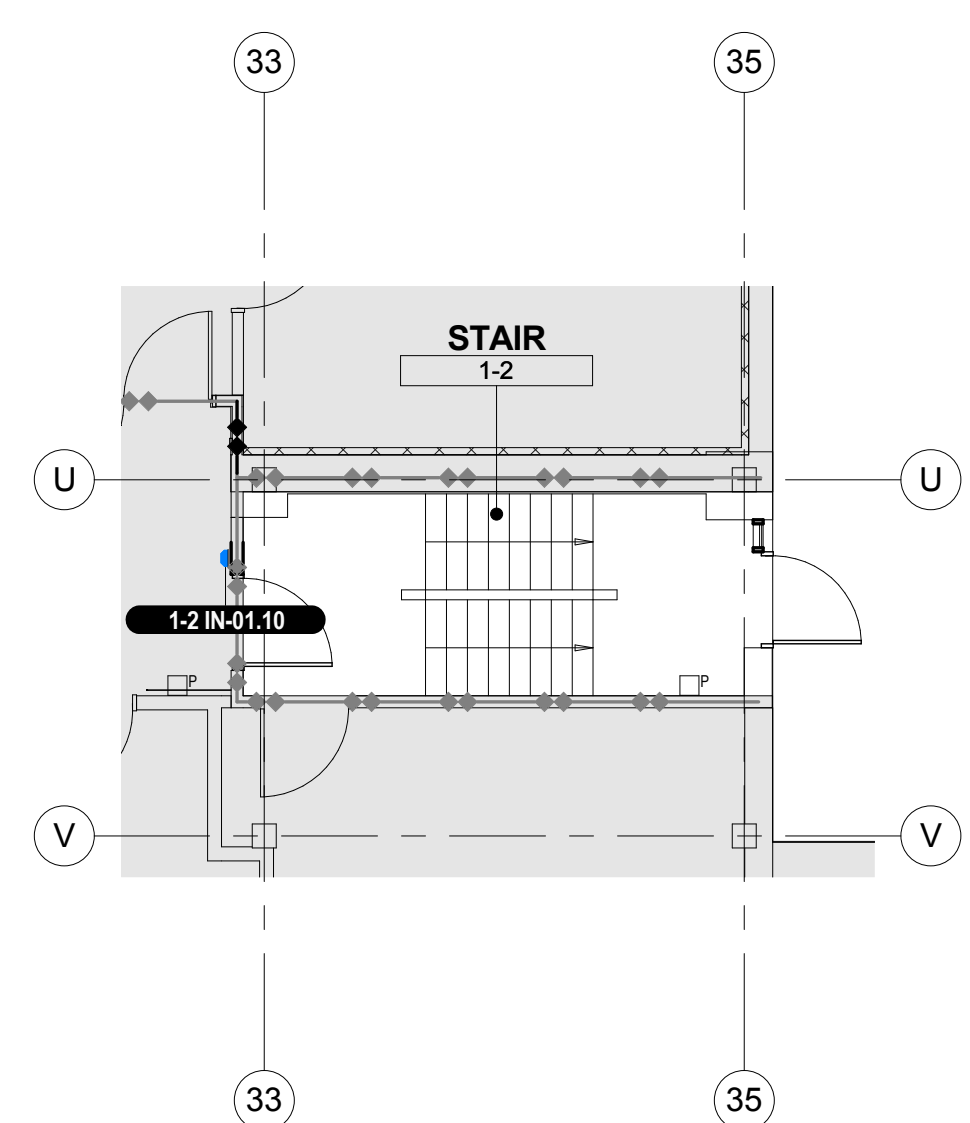




F1 PARTIAL GROUND FLOOR SIGNAGE PLAN - PART 4
1/8" = 1'-0"



B6 PARTIAL GROUND FLOOR SIGNAGE PLAN - PART 4B
1/8" = 1'-0"



F6 PARTIAL GROUND FLOOR SIGNAGE PLAN - PART 4A
1/8" = 1'-0"

KEY PLAN:

FULLY SPRINKLERED

Project Number 228727	Office of Construction and Facilities Management VA U.S. Department of Veterans Affairs
Building Number 1, 2, & 6	
Drawing Number AG1004	

Location 423 E 23RD STREET, NEW YORK, NY 10010		
Date 08 / 25 / 2014	Checked JZ	Drawn RSLT

CONSULTANTS: SHEN MILSOM WILKE 417 Fifth Ave, New York, NY 10016. 212-725-6800		ARCHITECT/ENGINEERS: Henningson, Durham & Richardson, Architecture and Engineering, P.C. 500 Seventh Ave, 11th Floor, New York, NY 10018. 212-904-1212		Drawing Title PARTIAL GROUND FLOOR SIGNAGE PLAN - PART 4, 4A, & 4B Approved: Project Director	Project Title VA NY HARBOR HEALTHCARE SYSTEM MANHATTAN CAMPUS / GROUND FLOOR PHASE 2B Location 423 E 23RD STREET, NEW YORK, NY 10010	Project Number 228727	Office of Construction and Facilities Management VA U.S. Department of Veterans Affairs
ISSUE FOR BID Revisions:					Date 08 / 25 / 2014	Checked JZ	
10/31/2014 Date					Drawn RSLT		