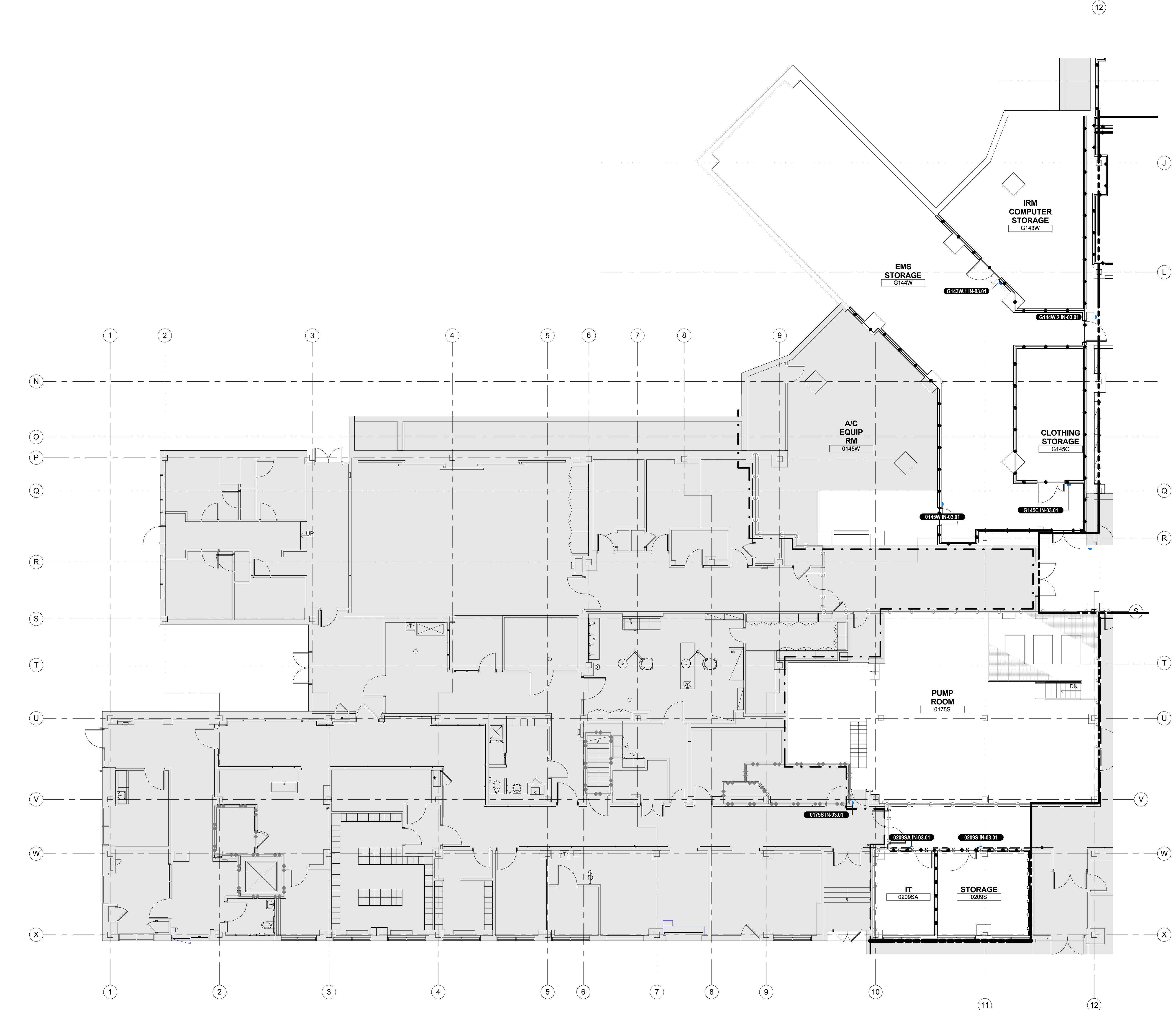
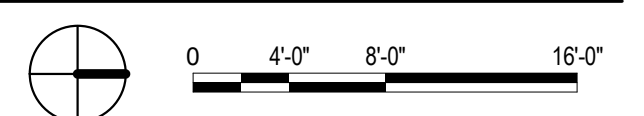


three inches = one foot  
one and one half inches = one foot  
one inch = one foot  
three quarters inch = one foot  
one half inch = one foot  
three eighths inch = one foot  
one quarter inch = one foot  
one eighth inch = one foot




F1 PARTIAL GROUND FLOOR SIGNAGE PLAN - PART 5  
1/8" = 1'-0"



ISSUE FOR BID	
Revisions:	Date
	10/31/2014

CONSULTANTS:



SHEN MILSOM WILKE  
417 Fifth Ave, New York, NY 10016 212-725-6800

ARCHITECT/ENGINEERS:



Henningson, Durham & Richardson, Architecture and Engineering, P.C.  
500 Seventh Ave, 11th Floor, New York, NY 10018 212-904-1212


Drawing Title  
**PARTIAL GROUND FLOOR SIGNAGE PLAN - PART 5**

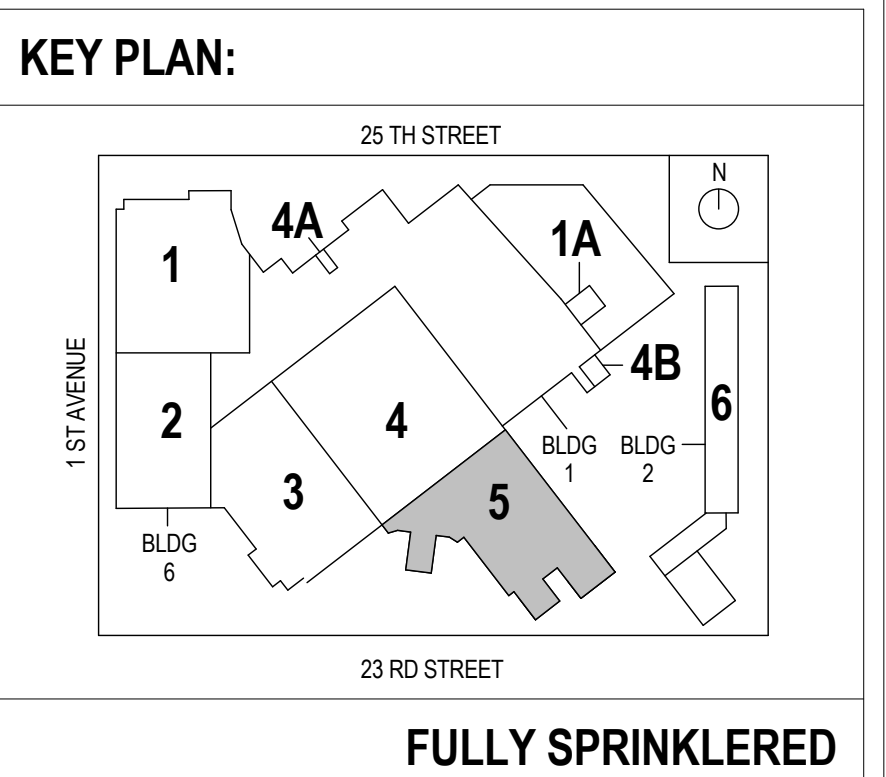
Approved: Project Director

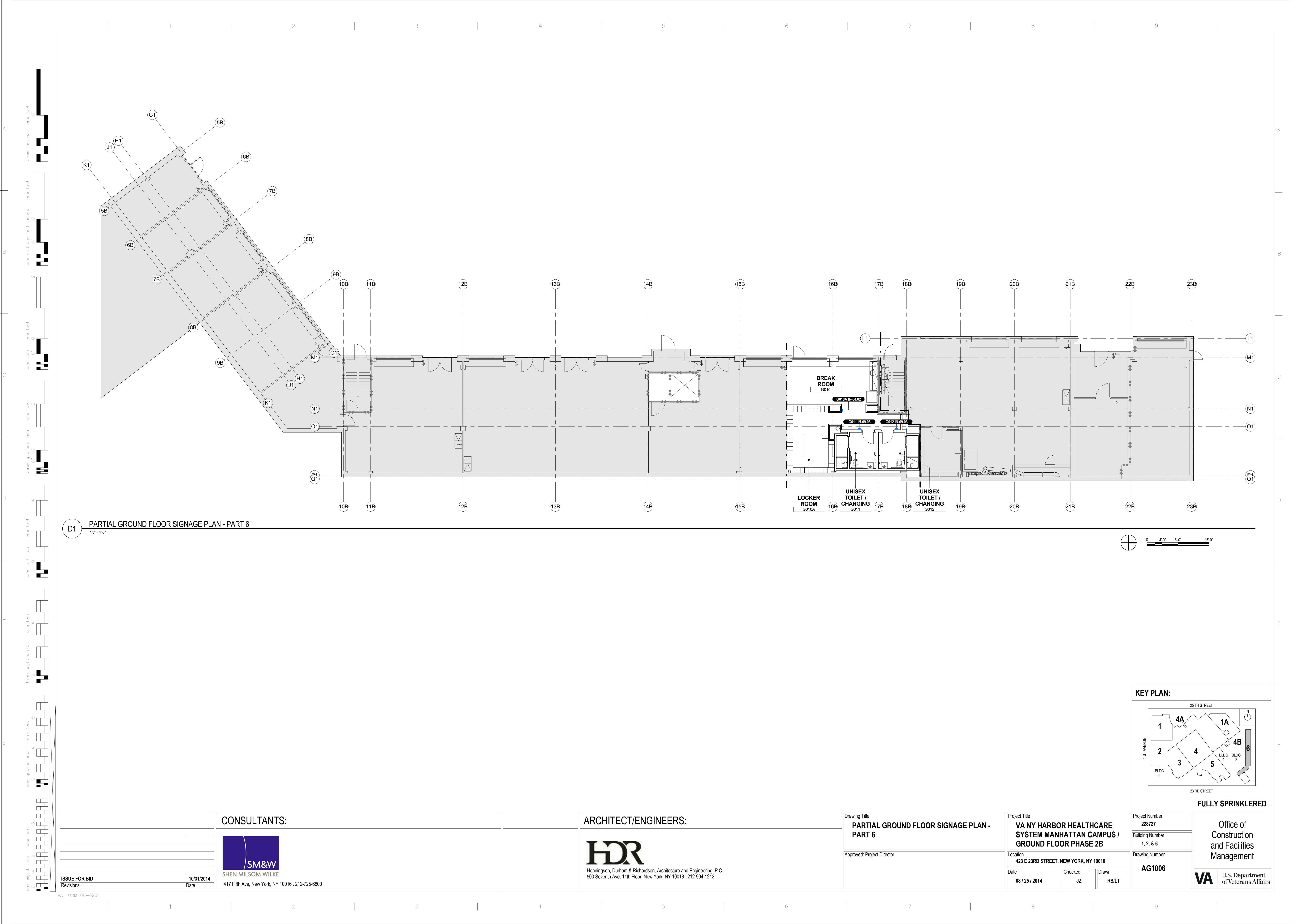
Project Title  
**VA NY HARBOR HEALTHCARE  
SYSTEM MANHATTAN CAMPUS /  
GROUND FLOOR PHASE 2B**

Location  
423 E 23RD STREET, NEW YORK, NY 10010

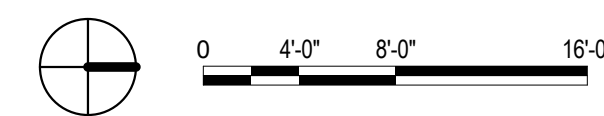
Date 08 / 25 / 2014	Checked JZ	Drawn RSLT
------------------------	---------------	---------------

Project Number 228727	Office of Construction and Facilities Management   U.S. Department of Veterans Affairs
Building Number 1, 2, & 6	
Drawing Number <b>AG1005</b>	



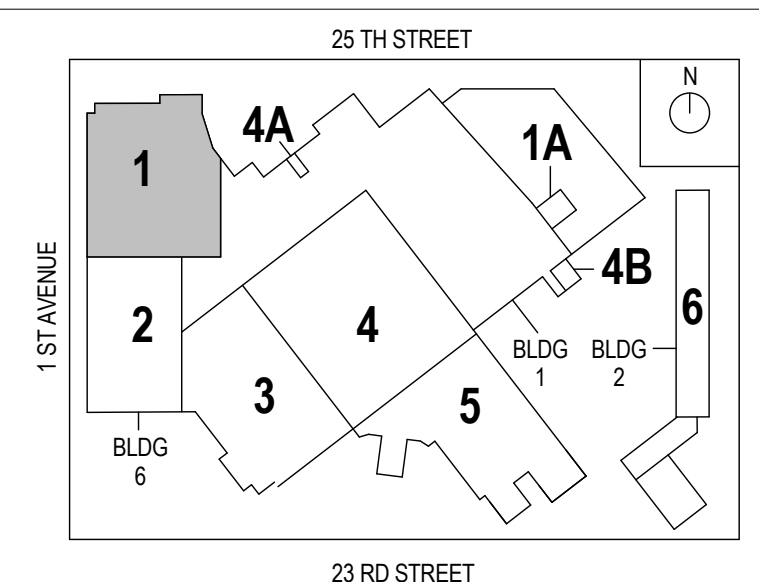




[illegible]

H&amp;R

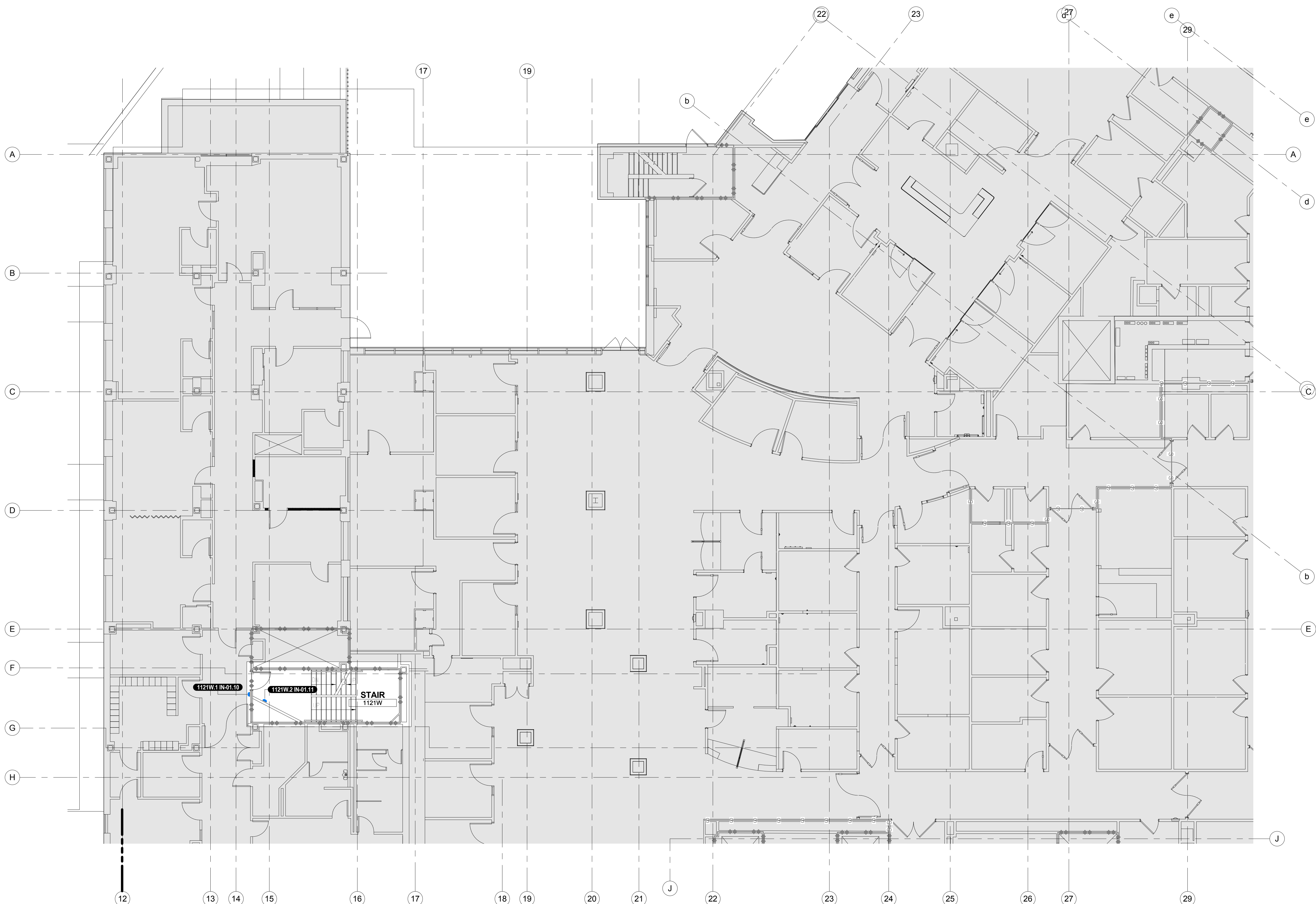
**VA** U.S. Department  
of Veterans Affairs



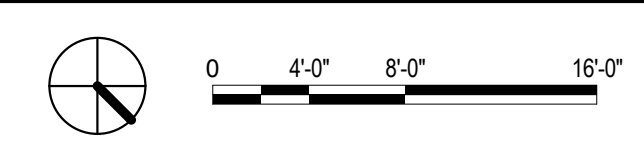
**FULLY SPRINKLERED**



three inches = one foot  
one and one half inches = one foot  
one inch = one foot  
three quarters inch = one foot  
one half inch = one foot  
three eighths inch = one foot  
one quarter inch = one foot  
one eighth inch = one foot



F1 PARTIAL FIRST FLOOR SIGNAGE PLAN - PART 3  
1/8" = 1'-0"



ISSUE FOR BID	10/31/2014
Revisions:	Date

CONSULTANTS:  
**SM&W**  
SHEN MILSOM WILKE  
417 Fifth Ave, New York, NY 10016 212-725-6800

ARCHITECT/ENGINEERS:  
**HDR**  
Henningson, Durham & Richardson, Architecture and Engineering, P.C.  
500 Seventh Ave, 11th Floor, New York, NY 10018 212-904-1212

Drawing Title  
**PARTIAL FIRST FLOOR SIGNAGE PLAN - PART 3**  
Approved: Project Director

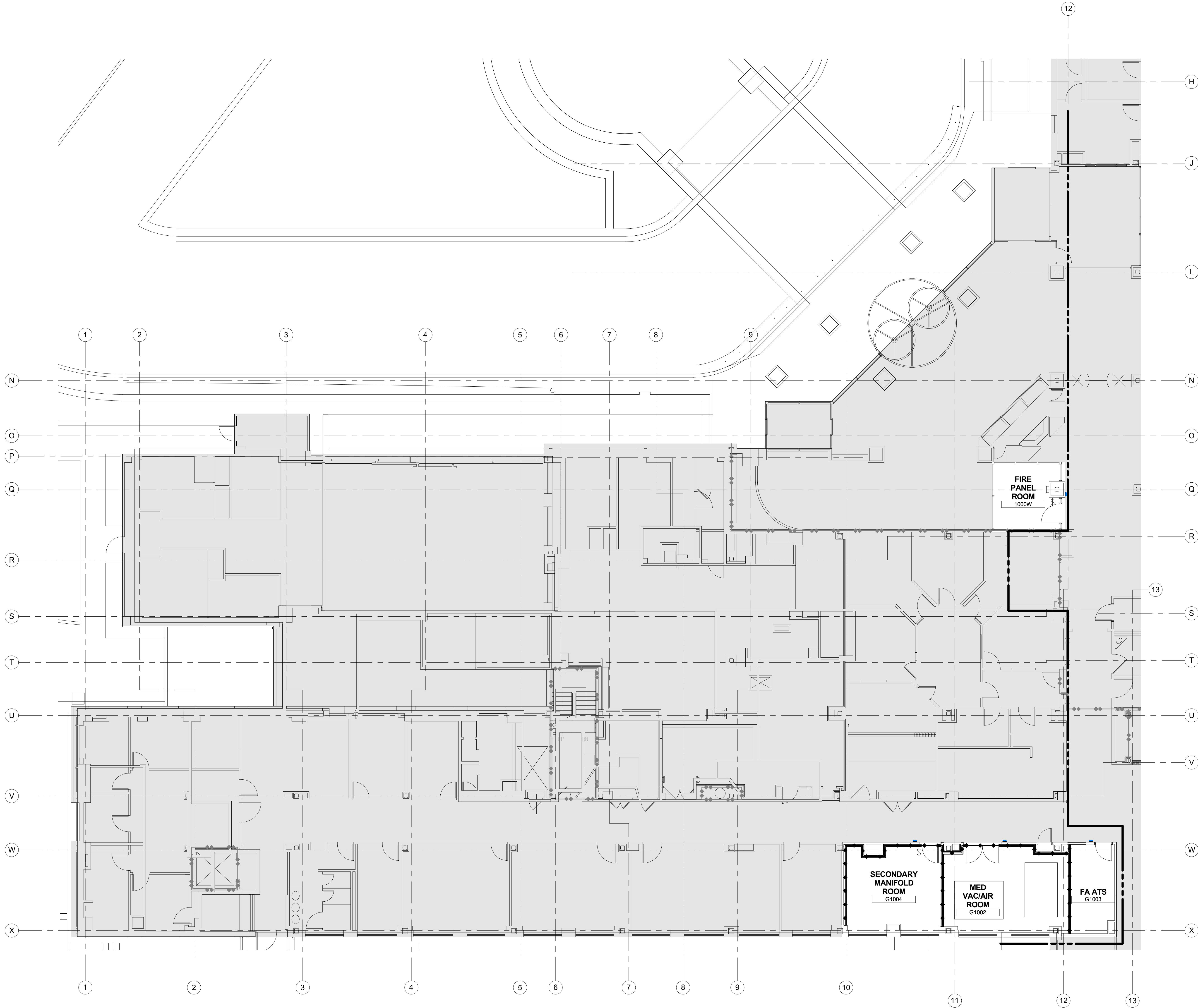
Project Title  
**VA NY HARBOR HEALTHCARE  
SYSTEM MANHATTAN CAMPUS /  
GROUND FLOOR PHASE 2B**  
Location  
**423 E 23RD STREET, NEW YORK, NY 10010**  
Date  
**08 / 25 / 2014**  
Checked  
**Checker**  
Drawn  
**Author**

**KEY PLAN:**

**FULLY SPRINKLERED**

Project Number <b>228727</b>	<b>Office of Construction and Facilities Management</b>  <b>VA</b> U.S. Department of Veterans Affairs
Building Number <b>1, 2, &amp; 6</b>	
Drawing Number <b>AG1103</b>	

three inches = one foot  
one and one half inches = one foot  
one inch = one foot  
three quarters inch = one foot  
one half inch = one foot  
three eighths inch = one foot  
one quarter inch = one foot  
one eighth inch = one foot



F1 PARTIAL FIRST FLOOR SIGNAGE PLAN - PART 5  
1/8" = 1'-0"

ISSUE FOR BID	10/31/2014
Revisions:	Date

CONSULTANTS:



SHEN MILSOM WILKE  
417 Fifth Ave, New York, NY 10016 212-725-6800

ARCHITECT/ENGINEERS:



Henningson, Durham & Richardson, Architecture and Engineering, P.C.  
500 Seventh Ave, 11th Floor, New York, NY 10018 212-904-1212

Drawing Title  
PARTIAL FIRST FLOOR SIGNAGE PLAN - PART 5

Approved: Project Director

Project Title  
VA NY HARBOR HEALTHCARE  
SYSTEM MANHATTAN CAMPUS /  
GROUND FLOOR PHASE 2B

Location  
423 E 23RD STREET, NEW YORK, NY 10010

Date  
08 / 25 / 2014

Checked  
Checker

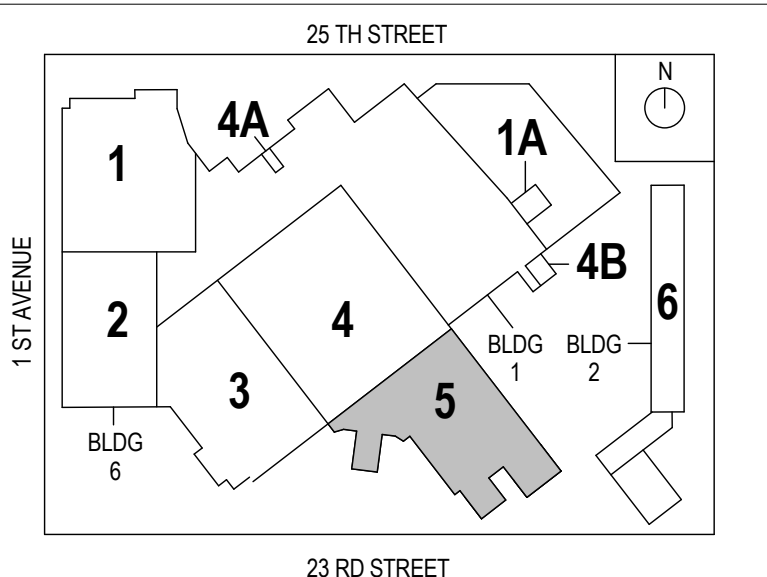
Drawn  
Author

Project Number  
228727  
Building Number  
1, 2, & 6  
Drawing Number  
AG1105

Office of  
Construction  
and Facilities  
Management

VA U.S. Department  
of Veterans Affairs

KEY PLAN:



FULLY SPRINKLERED



WAYFINDING - MESSAGE SCHEDULE (AG6001)							
Location	Sign Type	Room Number	Room Name	Message Side A	Message Side B	Comments	Mounting
	IN-01.02	G801	CORR	(Extinguisher Picto) Fire Equipment			Wall - Flat
	IN-01.31	G801	CORR	(Extinguisher Picto) Fire Equipment	(Extinguisher Picto) Fire Equipment		T-Mount
1-1.1	IN-01.10	1-1	STAIR	STAIR 1-1 GROUND NOT AN EXIT (BRAILLE) Keep Door Closed		Verify message prior to fabrication	Wall - Flat
1-1.2	IN-01.06	1-1	STAIR	Fire & Emergency Exit Plan			Door - Flat
1-1.3	IN-01.11	1-1	STAIR	STAIR 1-1 [TBD] GROUND EXIT THIS FLOOR G THROUGH [TBD]		Message Layout C; Verify message prior to fabrication	Wall - Flat
1-1A	IN-03.01	1-1A	STOR	1-1A (BRAILLE) (BRAILLE) Storage		Verify message prior to fabrication	Wall - Flat
1-2	IN-01.10	1-2	STAIR	STAIR 1-2 GROUND (BRAILLE) Keep Door Closed		Verify message prior to fabrication	Wall - Flat
1-3	IN-01.10	1-3	STAIR	STAIR 6-1 GROUND NOT AN EXIT (BRAILLE) Keep Door Closed		Verify message prior to fabrication	Wall - Flat
1-4.1	IN-03.01	1-4	STAIR	STAIR 1-4 GROUND NOT AN EXIT (BRAILLE) Keep Door Closed		Verify message prior to fabrication	Wall - Flat
1-4.2	IN-01.11	1-4	STAIR	STAIR 1-4 [TBD] GROUND EXIT UP TO FLOOR 1 G THROUGH [TBD]		Message Layout B; Verify message prior to fabrication	Wall - Flat
6-1.1	IN-01.10	6-1	STAIR	STAIR 6-1 GROUND NOT AN EXIT (BRAILLE) Keep Door Closed		Verify message prior to fabrication	Wall - Flat
6-1.2	IN-01.11	6-1	STAIR	STAIR G121W [TBD] GROUND EXIT UP TO FLOOR 1 G THROUGH [TBD]		Message Layout B; Verify message prior to fabrication	Wall - Flat
6-2.1	IN-01.10	6-2	STAIR	STAIR 6-2 GROUND NOT AN EXIT (BRAILLE) Keep Door Closed		Verify message prior to fabrication	Wall - Flat
6-2.2	IN-01.11	6-2	STAIR	STAIR 6-2 [TBD] GROUND EXIT UP TO FLOOR 1 G THROUGH [TBD]		Message Layout B; Verify message prior to fabrication	Wall - Flat
0145W	IN-03.01	0145W	A/C EQUIP RM	0145W (BRAILLE) (BRAILLE) A/C Equipment			Wall - Flat
0175S	IN-03.01	0175S	PUMP ROOM	0175S (BRAILLE) Pump Room			Wall - Flat
0209S	IN-03.01	0209S	STORAGE	0209S (BRAILLE) (BRAILLE) Storage			Wall - Flat
0209SA	IN-03.01	0209SA	IT	0209SA (BRAILLE) (BRAILLE) Information Technology			Wall - Flat
252	IN-03.01	252	BUILDING SUPPORT	252 (BRAILLE) (BRAILLE) Building Support			Wall - Flat
258B.1	IN-01.02	258B	CORR	(Extinguisher Picto) Fire Equipment			Wall - Flat
258B.2	IN-01.31	258B	CORR	(Extinguisher Picto) Fire Equipment	(Extinguisher Picto) Fire Equipment		T-Mount
258C.1	IN-01.02	258C	CORR	(Extinguisher Picto) Fire Equipment			Wall - Flat
258C.2	IN-01.31	258C	CORR	(Extinguisher Picto) Fire Equipment	(Extinguisher Picto) Fire Equipment		T-Mount
715	IN-03.01	715	SHAFT	715 (BRAILLE)			Wall - Flat
1000W	IN-04.02	1000W	FIRE PANEL ROOM	1000W (BRAILLE) (BRAILLE) Plumbing Equipment			Wall - Flat
1121W.1	IN-01.10	1121W	STAIR	STAIR 1121W LEVEL 1 NOT AN EXIT (BRAILLE) Keep Door Closed		Verify message prior to fabrication	Wall - Flat
1121W.2	IN-01.11	1121W	STAIR	STAIR 1121W [TBD] FLOOR 1 EXIT DOWN TO [TBD] G THROUGH [TBD]		Message Layout A; Verify message prior to fabrication	Wall - Flat
CG-2.1	IN-01.04	CG-2	ELEV LOBBY	In Case of Fire... (Fire Pictos)			Wall - Flat
CG-2.2	IN-01.01.01	CG-2	ELEV LOBBY	Fire & Emergency Exit Plan			Wall - Flat
G001.1	IN-01.01.01	G001	ELEV LOBBY	Fire & Emergency Exit Plan			Wall - Flat
G001.2	IN-01.01.01	G001	ELEV LOBBY	Fire & Emergency Exit Plan			Wall - Flat
G001.3	IN-01.04	G001	ELEV LOBBY	In Case of Fire... (Fire Pictos)			Wall - Flat
G001.4	IN-01.04	G001	ELEV LOBBY	In Case of Fire... (Fire Pictos)			Wall - Flat

WAYFINDING - MESSAGE SCHEDULE (AG6001)							
Location	Sign Type	Room Number	Room Name	Message Side A	Message Side B	Comments	Mounting
G001W	IN-03.01	G001W	ELEC CAB	G001W (BRAILLE)			Wall - Flat
G002	IN-03.01	G002	HSKP	G002 (BRAILLE)			Wall - Flat
G003	IN-04.02	G003	WASHER DRYER	G003 (BRAILLE) Washer/ Dryer			Wall - Flat
G010A	IN-04.02	G010A	LOCKER ROOM	G010A (BRAILLE) Locker Room			Wall - Flat
G011	IN-09.03	G011	UNISEX TOILET / CHANGING	G011 (BRAILLE) (W/M/HC Picto) RESTROOM			Wall - Flat
G012	IN-09.03	G012	UNISEX TOILET / CHANGING	G012 (BRAILLE) (W/M/HC Picto) RESTROOM			Wall - Flat
G114W	IN-03.01	G114W	LAUNDRY CHUTE	G114W (BRAILLE) Laundry Chute			Wall - Flat
G116	IN-03.01	G116	F D	G116 (BRAILLE) [Fire Dept]			Wall - Flat
G116W	IN-03.01	G116W	TELEPHONE EQUIP	G116W (BRAILE) (BRAILLE) Telephone Equipment			Wall - Flat
G119W	IN-03.01	G119W	ELEC CLT	G119W (BRAILLE) Electrical			Wall - Flat
G121W.1	IN-03.01	G121W	STAIR	STAIR G121W GROUND NOT AN EXIT (BRAILLE) Keep Door Closed		Verify message prior to fabrication	Wall - Flat
G121W.2	IN-01.06	G121W	STAIR	Fire & Emergency Exit Plan			Door - Flat
G121W.3	IN-01.06	G121W	STAIR	Fire & Emergency Exit Plan			Door - Flat
G121W.4	IN-01.10	G121W	STAIR	STAIR G121W [TBD] NOT AN EXIT (BRAILLE) Keep Door Closed		Verify message prior to fabrication	Wall - Flat
G121W.5	IN-01.11	G121W	STAIR	STAIR G121W [TBD] GROUND EXIT UP TO [TBD] G THROUGH [TBD]		Message Layout B; Verify message prior to fabrication	Wall - Flat
G121W.6	IN-01.11	G121W	STAIR	STAIR G121W [TBD] [TBD] EXIT THIS FLOOR G THROUGH [TBD]		Message Layout C; Verify message prior to fabrication	Wall - Flat
G122W	IN-03.01	G122W	PUMP ROOM	G122W (BRAILE) (BRAILLE) Pump Room			Wall - Flat
G122WA	IN-03.01	G122WA	SHAFT	G122WA (BRAILLE) (BRAILLE)			Wall - Flat
G123W.1	IN-03.01	G123W	MECHANICAL	G123W (BRAILE) (BRAILLE) Mechanical			Wall - Flat
G123W.2	IN-03.01	G123W	MECHANICAL	G123W (BRAILE) (BRAILLE) Mechanical			Wall - Flat
G124W	IN-03.01	G124W	STEAM ROOM	G124W (BRAILE) (BRAILLE) Steam Room			Wall - Flat
G125W	IN-03.01	G125W	STEAM ROOM	G125W (BRAILE) (BRAILLE) Steam Room			Wall - Flat
G126W	IN-03.01	G126W	STORAGE	G126W (BRAILE) (BRAILLE) Storage			Wall - Flat
G128W	IN-03.01	G128W	FIRE PUMP ROOM	G128W (BRAILE)			Wall - Flat
G129W	IN-03.01	G129W	ENGINEERING STORAGE	G129W (BRAILE) (BRAILLE) Engineering Storage			Wall - Flat
G130W	IN-03.01	G130W	STORAGE	G130W (BRAILLE) Storage			Wall - Flat
G133W	IN-03.01	G133W	ENGINEERING STORAGE	G133W (BRAILE) (BRAILLE) Engineering Storage			Wall - Flat
G140W	IN-04.02	G140W	MAIL / COPY	G140W (BRAILLE) Mail/Copy Room			Wall - Flat
G143W.1	IN-03.01	G143W	IRM COMPUTER STORAGE	G143W (BRAILE) IRM (BRAILLE) IRM Computer Storage			Wall - Flat
G144W.1	IN-03.01	G144W	EMS STORAGE	G145C (BRAILLE) Clothing Storage			Wall - Flat
G144W.2	IN-03.01	G144W	EMS STORAGE	G145C (BRAILLE) Clothing Storage	WAYFINDING MESSAGE SCHEDULE SUBMITTAL PRELIMINARY - NOT FOR CONSTRUCTION		Wall - Flat
G145C	IN-03.01	G145C	CLOTHING STORAGE	G145C (BRAILE) (BRAILLE) Clothing Storage	MESSAGE TEXT FOR ALL SIGN TYPES SHALL BE COORDINATED WITH THE CONTRACTING OFFICER PRIOR TO FABRICATION. REFER TO DRAWINGS AND LOCATION PLANS FOR COMPLETE INFORMATION.  TEXT WITHIN PARENTHESIS IN MESSAGE COLUMN		Wall - Flat

		CONSULTANTS:				ARCHITECT/ENGINEERS:		Drawing Title SIGNAGE MESSAGE SCHEDULE		Project Title VA NY HARBOR HEALTHCARE SYSTEM MANHATTAN CAMPUS / GROUND FLOOR PHASE 2B		Project Number 228727		Office of Construction and Facilities Management					
		 SHEN MILSOM WILKE 417 Fifth Ave, New York, NY 10016 . 212-725-6800				 Henningson, Durham & Richardson, Architecture and Engineering, P.C. 500 Seventh Ave, 11th Floor, New York, NY 10018 . 212-904-1212		Approved: Project Director		Location 423 E 23RD STREET, NEW YORK, NY 10010		Building Number 1, 2, & 6							
ISSUE FOR BID Revisions:		10/31/2014 Date								Date 08 / 25 / 2014		Checked JZ		Drawn RS/LT		Drawing Number AG6001		VA U.S. Department of Veterans Affairs	



one eighth inch = one foot  
one quarter inch = one foot  
three eighths inch = one foot  
one half inch = one foot  
three quarters inch = one foot  
one inch = one foot  
one and one half inches = one foot  
two inches = one foot  
three inches = one foot  
four inches = one foot  
five inches = one foot  
six inches = one foot  
seven inches = one foot  
eight inches = one foot  
nine inches = one foot  
ten inches = one foot  
eleven inches = one foot  
twelve inches = one foot  
thirteen inches = one foot  
fourteen inches = one foot  
fifteen inches = one foot  
sixteen inches = one foot  
seventeen inches = one foot  
eighteen inches = one foot  
nineteen inches = one foot  
twenty inches = one foot  
twenty one inches = one foot  
twenty two inches = one foot  
twenty three inches = one foot  
twenty four inches = one foot  
twenty five inches = one foot  
twenty six inches = one foot  
twenty seven inches = one foot  
twenty eight inches = one foot  
twenty nine inches = one foot  
thirty inches = one foot  
thirty one inches = one foot  
thirty two inches = one foot  
thirty three inches = one foot  
thirty four inches = one foot  
thirty five inches = one foot  
thirty six inches = one foot  
thirty seven inches = one foot  
thirty eight inches = one foot  
thirty nine inches = one foot  
forty inches = one foot  
forty one inches = one foot  
forty two inches = one foot  
forty three inches = one foot  
forty four inches = one foot  
forty five inches = one foot  
forty six inches = one foot  
forty seven inches = one foot  
forty eight inches = one foot  
forty nine inches = one foot  
fifty inches = one foot  
fifty one inches = one foot  
fifty two inches = one foot  
fifty three inches = one foot  
fifty four inches = one foot  
fifty five inches = one foot  
fifty six inches = one foot  
fifty seven inches = one foot  
fifty eight inches = one foot  
fifty nine inches = one foot  
sixty inches = one foot  
sixty one inches = one foot  
sixty two inches = one foot  
sixty three inches = one foot  
sixty four inches = one foot  
sixty five inches = one foot  
sixty six inches = one foot  
sixty seven inches = one foot  
sixty eight inches = one foot  
sixty nine inches = one foot  
seventy inches = one foot  
seventy one inches = one foot  
seventy two inches = one foot  
seventy three inches = one foot  
seventy four inches = one foot  
seventy five inches = one foot  
seventy six inches = one foot  
seventy seven inches = one foot  
seventy eight inches = one foot  
seventy nine inches = one foot  
eighty inches = one foot  
eighty one inches = one foot  
eighty two inches = one foot  
eighty three inches = one foot  
eighty four inches = one foot  
eighty five inches = one foot  
eighty six inches = one foot  
eighty seven inches = one foot  
eighty eight inches = one foot  
eighty nine inches = one foot  
ninety inches = one foot  
ninety one inches = one foot  
ninety two inches = one foot  
ninety three inches = one foot  
ninety four inches = one foot  
ninety five inches = one foot  
ninety six inches = one foot  
ninety seven inches = one foot  
ninety eight inches = one foot  
ninety nine inches = one foot  
one hundred inches = one foot

WAYFINDING - MESSAGE SCHEDULE (AG6002)							
Location	Sign Type	Room Number	Room Name	Message Side A	Message Side B	Comments	Mounting
G382	IN-09.01	G382	MALE TOILET	G382 (BRAILLE) (M/HC Picto) MEN			Wall - Flat
G383	IN-09.02	G383	FEMALE TOILET	G383 (BRAILLE) (W/HC Picto) WOMEN			Wall - Flat
G500A	IN-03.01	G500A	MECHANICAL ROOM	G500A (BRAILE) (BRAILLE) Mechanical			Wall - Flat
G600.1	IN-01.04	G600	LOBBY	In Case of Fire... (Fire Pictos)			Wall - Flat
G600.2	IN-01.01.01	G600	LOBBY	Fire & Emergency Exit Plan			Wall - Flat
G600.3	IN-01.04	G600	LOBBY	In Case of Fire... (Fire Pictos)			Wall - Flat
G601	IN-03.01	G601	STORAGE	G601 (BRAILE) (BRAILLE) Storage			Wall - Flat
G602	IN-03.01	G602	STORAGE	G602 (BRAILE) (BRAILLE) Storage			Wall - Flat
G603	IN-09.01	G603	MALE LOCKER	G603 (BRAILE) (M/HC Picto) MEN (BRAILLE) (M/HC Picto) LOCKER			Wall - Flat
G605	IN-09.02	G605	FEMALE LOCKER	G605 (BRAILE) (W/HC Picto) WOMEN (BRAILLE) (W/HC Picto) LOCKER			Wall - Flat
G607.1	IN-04.02	G607	BREAK AREA	G607 (BRAILE) Break Room (BRAILLE) Break Area			Wall - Flat
G607.2	IN-04.02	G607	BREAK AREA	G607 (BRAILE) Break Room (BRAILLE) Break Area			Wall - Flat
G609	IN-03.01	G609	STORAGE	G609 (BRAILLE)			Wall - Flat
G610	IN-09.03	G610	TOILET	G610 (BRAILLE) (W/M/HC Picto) RESTROOM			Wall - Flat
G611	IN-09.03	G611	TOILET	G611 (BRAILLE) (W/M/HC Picto) RESTROOM			Wall - Flat
G615.3	IN-01.02	G615	CORR	(Extinguisher Picto) Fire Equipment			Wall - Flat
G615.4	IN-01.02	G615	CORR	(Extinguisher Picto) Fire Equipment			Wall - Flat
G615.5	IN-01.31	G615	CORR	(Extinguisher Picto) Fire Equipment	(Extinguisher Picto) Fire Equipment		T-Mount
G615.6	IN-01.31	G615	CORR	(Extinguisher Picto) Fire Equipment	(Extinguisher Picto) Fire Equipment		T-Mount
G616	IN-03.01	G616	ELEC	G616 (BRAILE) (BRAILLE) Electrical			Wall - Flat
G618.1	IN-04.02	G617	WORKSTATIONS 1-4	G621 (BRAILLE) [Office TBD]	Vinyl added to back side of glass		Wall - Flat
G618.2	IN-04.02	G615	CORR	G621 (BRAILLE) [Office TBD]	Vinyl added to back side of glass		Wall - Flat
G618.3	IN-01.02	G619	COPY	(Extinguisher Picto) Fire Equipment			Wall - Flat
G618.4	IN-01.31	G619	COPY	(Extinguisher Picto) Fire Equipment	(Extinguisher Picto) Fire Equipment		T-Mount
G620	IN-04.04	G620	OFFICE	G620 (BRAILE) [Office TBD] (BRAILLE) [Office TBD]	Vinyl added to back side of glass		Wall - Flat
G621	IN-04.04	G621	OFFICE	G621 (BRAILE) [Office TBD] (BRAILLE) [Office TBD]	Vinyl added to back side of glass		Wall - Flat
G622	IN-04.04	G622	OFFICE	G622 (BRAILE) [Office TBD] (BRAILLE) [Office TBD]	Vinyl added to back side of glass		Wall - Flat
G623	IN-04.04	G623	OFFICE	G623 (BRAILE) [Office TBD] (BRAILLE) [Office TBD]	Vinyl added to back side of glass		Wall - Flat
G624	IN-04.04	G624	OFFICE	G624 (BRAILE) [Office TBD] (BRAILLE) [Office TBD]	Vinyl added to back side of glass		Wall - Flat
G625	IN-04.04	G625	OFFICE	G625 (BRAILE) [Office TBD] (BRAILLE) [Office TBD]	Vinyl added to back side of glass		Wall - Flat
G626	IN-04.04	G626	OFFICE	G626 (BRAILE) [Office TBD] (BRAILLE) [Office TBD]	Vinyl added to back side of glass		Wall - Flat
G627	IN-04.04	G627	OFFICE	G627 (BRAILE) [Office TBD] (BRAILLE) [Office TBD]	Vinyl added to back side of glass		Wall - Flat
G628	IN-04.04	G628	OFFICE	G628 (BRAILE) [Office TBD] (BRAILLE) [Office TBD]	Vinyl added to back side of glass		Wall - Flat
G629	IN-04.04	G629	OFFICE	G629 (BRAILE) [Office TBD] (BRAILLE) [Office TBD]	Vinyl added to back side of glass		Wall - Flat
G630	IN-03.01	G630	IT	G630 (BRAILE) (BRAILLE) Information Technology			Wall - Flat
G631	IN-09.02	G631	FEMALE TOILETS	G631 (BRAILLE) (W/HC Picto) WOMEN			Wall - Flat



WAYFINDING - MESSAGE SCHEDULE (AG6002)							
Location	Sign Type	Room Number	Room Name	Message Side A	Message Side B	Comments	Mounting
G632	IN-09.01	G632	MALE TOILETS	G632 (BRAILLE) (M/HC Picto) MEN			Wall - Flat
G650	IN-03.01	G650	STORAGE	G650 (BRAILLE)			Wall - Flat
G701.1	IN-04.02	G701A	VEST	G701 (BRAILLE) Auditorium (In Use slider)			Wall - Flat
G701.2	IN-04.02	G701B	VEST	G701 (BRAILLE) Auditorium (In Use slider)			Wall - Flat
G702.1	IN-01.31	G702	VESTIBULE	(Extinguisher Picto) Fire Equipment	(Extinguisher Picto) Fire Equipment		T-Mount
G702.2	IN-01.02	G702	VESTIBULE	(Extinguisher Picto) Fire Equipment			Wall - Flat
G703	IN-04.02	G701C	WHEELCHAIR LIFT	G703 (BRAILLE) Wheelchair Lift			Wall - Flat
G704	IN-03.01	G704	AUDITORIUM STORAGE	G704 (BRAILE) (BRAILLE) Auditorium Storage			Wall - Flat
G705	IN-03.01	G705	BUILDING SUPPORT	G705 (BRAILE) (BRAILLE) Building Support			Wall - Flat
G706	IN-03.01	G707	IT	G706 (BRAILE) (BRAILLE) Information Technology			Wall - Flat
G709	IN-03.01	G709	COAT CLOSET	G709 (BRAILE) (BRAILLE) Coat Closet			Wall - Flat
G710	IN-03.01	G710	STORAGE	G710 (BRAILE) (BRAILLE) [Rm Name]			Wall - Flat
G711	IN-03.01	G711	HSKP	G711 (BRAILE) (BRAILLE)			Wall - Flat
G712	IN-04.02	G712	AV / CONTROL ROOM	G701 (BRAILE) Control Room (BRAILLE) Auditorium (In Use slider)			Wall - Flat
G713	IN-04.02			G713 (BRAILE) Kitchenette (BRAILLE) [TBD Dept]			Wall - Flat
G714	IN-04.02	G714	LOBBY	G801 (BRAILLE) [TBD]			Wall - Flat
G715	IN-04.02	G715	RECEPT	G715 (BRAILLE) Reception			Wall - Flat
G716	IN-04.02	G716	COPY/FAX	G716 (BRAILLE) Copy/Fax			Wall - Flat
G717.2	IN-01.02	G717	OPEN OFFICE	(Extinguisher Picto) Fire Equipment			Wall - Flat
G717.3	IN-01.31	G717	OPEN OFFICE	(Extinguisher Picto) Fire Equipment	(Extinguisher Picto) Fire Equipment		T-Mount
G717.4	IN-04.02	G717	OPEN OFFICE	G801 (BRAILLE) [TBD]			Wall - Flat
G718	IN-04.04	G718	OFFICE	G718 (BRAILLE) [Office TBD]		Vinyl added to back side of glass	Wall - Flat
G719	IN-04.04	G719	OFFICE	G719 (BRAILLE) [Office TBD]		Vinyl added to back side of glass	Wall - Flat
G720	IN-04.04	G720	OFFICE	G720 (BRAILLE) [Office TBD]		Vinyl added to back side of glass	Wall - Flat
G721	IN-04.04	G721	OFFICE	G721 (BRAILLE) [Office TBD]		Vinyl added to back side of glass	Wall - Flat
G722	IN-04.04	G722	OFFICE	G722 (BRAILLE) [Office TBD]		Vinyl added to back side of glass	Wall - Flat
G723	IN-04.04	G723	OFFICE	G723 (BRAILLE) [Office TBD]		Vinyl added to back side of glass	Wall - Flat
G724	IN-04.04	G724	OFFICE	G724 (BRAILLE) [Office TBD]		Vinyl added to back side of glass	Wall - Flat
G725	IN-04.04	G725	OFFICE	G725 (BRAILLE) [Office TBD]		Vinyl added to back side of glass	Wall - Flat

WAYFINDING MESSAGE SCHEDULE SUBMITTAL  
PRELIMINARY - NOT FOR CONSTRUCTION

MESSAGE TEXT FOR ALL SIGN TYPES SHALL BE  
COORDINATED WITH THE CONTRACTING OFFICER  
PRIOR TO FABRICATION. REFER TO DRAWINGS AND  
LOCATION PLANS FOR COMPLETE INFORMATION.

TEXT WITHIN PARENTHESIS IN MESSAGE COLUMN  
IS NOT PART OF SIGN MESSAGE.

Drawing Title <b>SIGNAGE MESSAGE SCHEDULE (CONTINUED)</b>		Project Title <b>VA NY HARBOR HEALTHCARE SYSTEM MANHATTAN CAMPUS / GROUND FLOOR PHASE 2B</b>		Project Number <b>228727</b>		Office of Construction and Facilities Management  <b>VA</b> U.S. Department of Veterans Affairs
Approved: Project Director		Location <b>423 E 23RD STREET, NEW YORK, NY 10010</b>		Building Number <b>1, 2, &amp; 6</b>		
Date <b>08 / 25 / 2014</b>		Checked <b>JZ</b>		Drawn <b>RSLT</b>		
				Drawing Number <b>AG6002</b>		

CONSULTANTS:		ARCHITECT/ENGINEERS:	
 SHEN MILSOM WILKE 417 Fifth Ave, New York, NY 10016 212-725-6800		 Henningson, Durham & Richardson, Architecture and Engineering, P.C. 500 Seventh Ave, 11th Floor, New York, NY 10018 212-904-1212	
ISSUE FOR BID Revisions:			
10/31/2014 Date			



A

B

C

D

E

F

A

B

C

D

E

F

WAYFINDING - MESSAGE SCHEDULE (AG6003)							
Location	Sign Type	Room Number	Room Name	Message Side A	Message Side B	Comments	Mounting
G726	IN-04.04	G726	OFFICE	G726 (BRAILLE) [Office TBD]		Vinyl added to back side of glass	Wall - Flat
G727	IN-04.04	G727	OFFICE	G727 (BRAILLE) [Office TBD]		Vinyl added to back side of glass	Wall - Flat
G728	IN-04.04	G728	OFFICE	G728 (BRAILLE) [Office TBD]		Vinyl added to back side of glass	Wall - Flat
G729	IN-04.04	G729	OFFICE	G729 (BRAILLE) [Office TBD]		Vinyl added to back side of glass	Wall - Flat
G730	IN-04.04	G730	OFFICE	G730 (BRAILLE) [Office TBD]		Vinyl added to back side of glass	Wall - Flat
G731	IN-04.04	G731	OFFICE	G731 (BRAILLE) [Office TBD]		Vinyl added to back side of glass	Wall - Flat
G732	IN-04.04	G732	OFFICE	G732 (BRAILLE) [Office TBD]		Vinyl added to back side of glass	Wall - Flat
G733	IN-04.04	G733	OFFICE	G733 (BRAILLE) [Office TBD]		Vinyl added to back side of glass	Wall - Flat
G734	IN-04.04	G734	OFFICE	G734 (BRAILLE) [Office TBD]		Vinyl added to back side of glass	Wall - Flat
G735	IN-04.04	G735	OFFICE	G735 (BRAILLE) [Office TBD]		Vinyl added to back side of glass	Wall - Flat
G736	IN-04.04	G736	OFFICE	G736 (BRAILLE) [Office TBD]		Vinyl added to back side of glass	Wall - Flat
G737	IN-03.01	G737	ELEC	G737 (BRAILLE) Electrical			Wall - Flat
G801.1	IN-04.02	G801	CORR	G801 (BRAILLE) [TBD]			Wall - Flat
G801.4	IN-01.06	G801	CORR	Fire & Emergency Exit Plan			Door - Flat
G802	IN-04.02	G802	MEETING ROOM	G802 (BRAILLE) Meeting Room [XX] (In Use slider)			Wall - Flat
G803	IN-04.02	G803	MEETING ROOM	G803 (BRAILLE) Meeting Room [XX] (In Use slider)			Wall - Flat
G804	IN-04.02	G804	MEETING ROOM	G804 (BRAILLE) Meeting Room [XX] (In Use slider)			Wall - Flat
G805	IN-04.02	G805	MEETING ROOM	G805 (BRAILLE) Meeting Room [XX] (In Use slider)			Wall - Flat
G806	IN-04.02	G806	MEETING ROOM	G806 (BRAILLE) Meeting Room [XX] (In Use slider)			Wall - Flat
G807	IN-04.02	G807	MEETING ROOM	G807 (BRAILLE) Meeting Room [XX] (In Use slider)			Wall - Flat
G810	IN-09.02	G810	FEMALE TOILET	G810 (BRAILLE) (WHC Picto) WOMEN			Wall - Flat
G812	IN-09.01	G812	MALE TOILET	G812 (BRAILLE) (MHC Picto) MEN			Wall - Flat
G900	IN-04.02	G900	LOBBY	G900 (BRAILLE) [TBD]			Wall - Flat
G901A.1	IN-04.02	G901A	CORR	G901A (BRAILLE) [TBD] (Simulation Center)			Wall - Flat
G901A.2	IN-01.02	G901A	CORR	(Extinguisher Picto) Fire Equipment			Wall - Flat
G901A.3	IN-01.31	G901A	CORR	(Extinguisher Picto) Fire Equipment	(Extinguisher Picto) Fire Equipment		T-Mount
G902.1	IN-04.02	G902	EXAM	G902 (BRAILLE) Exam [XX]			Wall - Flat
G902.2	IN-04.02	G902	EXAM	G902 (BRAILLE) Exam [XX]			Wall - Flat
G903	IN-04.02	G903	OBSRV	G903 (BRAILLE) Observation			Wall - Flat
G904.1	IN-04.02	G904	EXAM	G904 (BRAILLE) Exam [XX]			Wall - Flat

WAYFINDING - MESSAGE SCHEDULE (AG6003)							
Location	Sign Type	Room Number	Room Name	Message Side A	Message Side B	Comments	Mounting
G904.2	IN-04.02	G904	EXAM	G904 (BRAILLE) Exam [XX]			Wall - Flat
G905.1	IN-04.02	G905	CONTROL	G905 (BRAILLE) Control			Wall - Flat
G905.2	IN-04.02	G905	CONTROL	G905 (BRAILLE) Control			Wall - Flat
G906	IN-04.02	G906	ICU	G906 (BRAILLE) ICU			Wall - Flat
G907.1	IN-04.02	G907	DRESS	G907 (BRAILLE) Dressing Room			Wall - Flat
G907.2	IN-04.02	G907	DRESS	G907 (BRAILLE) Dressing Room			Wall - Flat
G908	IN-04.02	G908	OBSRV	G908 (BRAILLE) Observation [XX]			Wall - Flat
G909.1	IN-04.02	G909	OR	G909 (BRAILLE) Operation Room [Rm Name]			Wall - Flat
G909.2	IN-04.02	G909	OR	G909 (BRAILLE) Operation Room [XX]			Wall - Flat
G910	IN-04.02	G910	OBSRV	G910 (BRAILLE) Observation [XX]			Wall - Flat
G912	IN-04.02	G912	CONTROL	G912 (BRAILLE) Control			Wall - Flat
G912.2	IN-04.02	G912	CONTROL	G912 (BRAILLE) Control			Wall - Flat
G913	IN-04.02	G913	IN-PAT	G913 (BRAILLE) Inpatient			Wall - Flat
G914	IN-11.04	G914	TOILET	G914			Wall - Flat
G915	IN-11.04	G915	TOILET	G914			Wall - Flat

WAYFINDING MESSAGE SCHEDULE SUBMITTAL  
PRELIMINARY - NOT FOR CONSTRUCTION

MESSAGE TEXT FOR ALL SIGN TYPES SHALL BE  
COORDINATED WITH THE CONTRACTING OFFICER  
PRIOR TO FABRICATION. REFER TO DRAWINGS AND  
LOCATION PLANS FOR COMPLETE INFORMATION.

TEXT WITHIN PARENTHESIS IN MESSAGE COLUMN  
IS NOT PART OF SIGN MESSAGE.

<div>ISSUE FOR BID</div> <div>Revisions:</div>		<div>10/31/2014</div> <div>Date</div>	<div>CONSULTANTS:</div> <div><div>SHEN MILSOM WILKE</div>417 Fifth Ave, New York, NY 10016. 212-725-6800</div>			<div>ARCHITECT/ENGINEERS:</div> <div><div>Henningson, Durham &amp; Richardson, Architecture and Engineering, P.C. 500 Seventh Ave, 11th Floor, New York, NY 10018. 212-904-1212</div></div>	<div>Drawing Title</div> <div>SIGNAGE MESSAGE SCHEDULE (CONTINUED)</div> <div>Approved: Project Director</div>	<div>Project Title</div> <div>VA NY HARBOR HEALTHCARE SYSTEM MANHATTAN CAMPUS / GROUND FLOOR PHASE 2B</div> <div>Location</div> <div>423 E 23RD STREET, NEW YORK, NY 10010</div> <div>Date</div> <div>08 / 25 / 2014</div>	<div>Project Number</div> <div>228727</div> <div>Building Number</div> <div>1, 2, &amp; 6</div> <div>Drawing Number</div> <div>AG6003</div> <div>Checked</div> <div>JZ</div> <div>Drawn</div> <div>RSLT</div>	<div>Office of Construction and Facilities Management</div> <div> U.S. Department of Veterans Affairs</div>
--	--	---------------------------------------	---	--	--	--	--	--	---	--



Location	Sign Type	Room Number	Room Name	Message Side A	Message Side B	Comments	Mounting
G916	IN-04.02	G916	IN-PAT	G916 (BRAILLE) Inpatient (BRAILLE) Inpatient			Wall - Flat
G918	IN-04.02	G918	WOMEN'S HEALTH	G918 (BRAILLE) Women's Health (BRAILLE) Women's Health			Wall - Flat
G919	IN-03.01	G919	EQP STOR	G919 (BRAILLE) (BRAILLE) Equipment Storage			Wall - Flat
G920	IN-03.01	G920	EQP STOR	G920 (BRAILLE) (BRAILLE) Equipment Storage			Wall - Flat
G921	IN-03.01	G921	A/V	G921 (BRAILLE) (BRAILLE) Audio/Visual			Wall - Flat
G922	IN-03.01	G922	IT	G922 (BRAILLE) (BRAILLE) Information Technology			Wall - Flat
G923	IN-04.04	G923	TRAINER OFFICE	G923 (BRAILLE) [TBD] (BRAILLE) Trainer		Vinyl added to back side of glass	Wall - Flat
G924	IN-04.04	G924	TRAINER OFFICE	G924 (BRAILLE) [TBD] (BRAILLE) Trainer		Vinyl added to back side of glass	Wall - Flat
G925	IN-04.04	G925	DIR OFFICE	G925 (BRAILLE) [TBD] (BRAILLE) Director		Vinyl added to back side of glass	Wall - Flat
G926	IN-04.02	G926	RECPT	G926 (BRAILLE) Reception (BRAILLE) Reception			Wall - Flat
G927	IN-04.02	G927	CLASSROOM	G927 (BRAILLE) Classroom (BRAILLE) Classroom [XX] (In Use slider)			Wall - Flat
G928	IN-04.02	G928	COMP LAB	G928 (BRAILLE) Computer Lab (BRAILLE) Computer Lab			Wall - Flat
G929.1	IN-03.01	G929	EQUIP STOR	G929 (BRAILLE) (BRAILLE) Equipment Storage			Wall - Flat
G929.2	IN-03.01	G929	EQUIP STOR	G929 (BRAILLE) (BRAILLE) Equipment Storage			Wall - Flat
G930	IN-04.02	G930	VIRTUAL REALITY	G930 (BRAILLE) Virtual Reality (BRAILLE) Virtual Reality			Wall - Flat
G931	IN-09.03	G931	TOILET	G931 (BRAILLE) (W/M/HC Picto) RESTROOM (BRAILLE) (W/M/HC Picto) RESTROOM			Wall - Flat
G932	IN-09.03	G932	TOILET	G932 (BRAILLE) (W/M/HC Picto) RESTROOM (BRAILLE) (W/M/HC Picto) RESTROOM			Wall - Flat
G933	IN-03.01	G933	HSKP	G933 (BRAILLE) (BRAILLE) Housekeeping			Wall - Flat
G951	IN-04.02	G951	PHARMACY CACHE	G951 (BRAILLE) Pharmacy Cache (BRAILLE) Pharmacy [TBD]			Wall - Flat
G953.1	IN-03.01	G953	BUILDING SUPPORT	G951 (BRAILLE) (BRAILLE) Pharmacy [TBD]			Wall - Flat
G953.2	IN-03.01	G953	BUILDING SUPPORT	G953 (BRAILLE) (BRAILLE) Building Support			Wall - Flat
G954	IN-03.01	G954	ELEC	G954 (BRAILLE) (BRAILLE) Electrical			Wall - Flat
G955	IN-03.01	G955	PLUMBING EQUIPMENT	G955(BRAILLE) (BRAILLE) Plumbing Equipment			Wall - Flat
G1001	IN-03.01	G1001	PLUMB EQUIP	G1001(BRAILLE) (BRAILLE) Plumbing Equipment			Wall - Flat
G1002	IN-03.01	G1002	MED VAC/AIR ROOM	G1002(BRAILLE) (BRAILLE) Plumbing Equipment			Wall - Flat
G1003	IN-03.01	G1003	FA ATS	G1003(BRAILLE) (BRAILLE) Plumbing Equipment			Wall - Flat
G1004	IN-03.01	G1004	SECONDARY MANIFOLD ROOM	G1004(BRAILLE) (BRAILLE) Plumbing Equipment			Wall - Flat

		<b>CONSULTANTS:</b>   <b>SM&amp;W</b> SHEN MILSOM WILKE 417 Fifth Ave, New York, NY 10016 : 212-725-6800				<b>ARCHITECT/ENGINEERS:</b>   <b>HDR</b> Henningson, Durham & Richardson, Architecture and Engineering, P.C. 500 Seventh Ave, 11th Floor, New York, NY 10018 : 212-904-1212		Drawing Title <b>SIGNAGE MESSAGE SCHEDULE (CONTINUED)</b>  Approved: Project Director			Project Title <b>VA NY HARBOR HEALTHCARE SYSTEM MANHATTAN CAMPUS / GROUND FLOOR PHASE 2B</b>  Location <b>423 E 23RD STREET, NEW YORK, NY 10010</b>  Date <b>08 / 25 / 2014</b>			Project Number <b>228727</b>  Building Number <b>1, 2, &amp; 6</b>  Drawing Number <b>AG6004</b>			Office of Construction and Facilities Management  <b>VA</b> U.S. Department of Veterans Affairs	
--	--	--	--	--	--	---	--	--	--	--	--	--	--	---	--	--	---	--

WAYFINDING MESSAGE SCHEDULE SUBMITTAL  
PRELIMINARY - NOT FOR CONSTRUCTION

MESSAGE TEXT FOR ALL SIGN TYPES SHALL BE COORDINATED WITH THE CONTRACTING OFFICER PRIOR TO FABRICATION. REFER TO DRAWINGS AND LOCATION PLANS FOR COMPLETE INFORMATION.

TEXT WITHIN PARENTHESIS IN MESSAGE COLUMN  
IS NOT PART OF SIGN MESSAGE.

TEXT WITHIN PARENTHESIS IN MESSAGE COLUMN  
IS NOT PART OF SIGN MESSAGE.

TEXT WITHIN PARENTHESIS IN MESSAGE COLUMN  
IS NOT PART OF SIGN MESSAGE.

TEXT WITHIN PARENTHESIS IN MESSAGE COLUMN  
IS NOT PART OF SIGN MESSAGE.