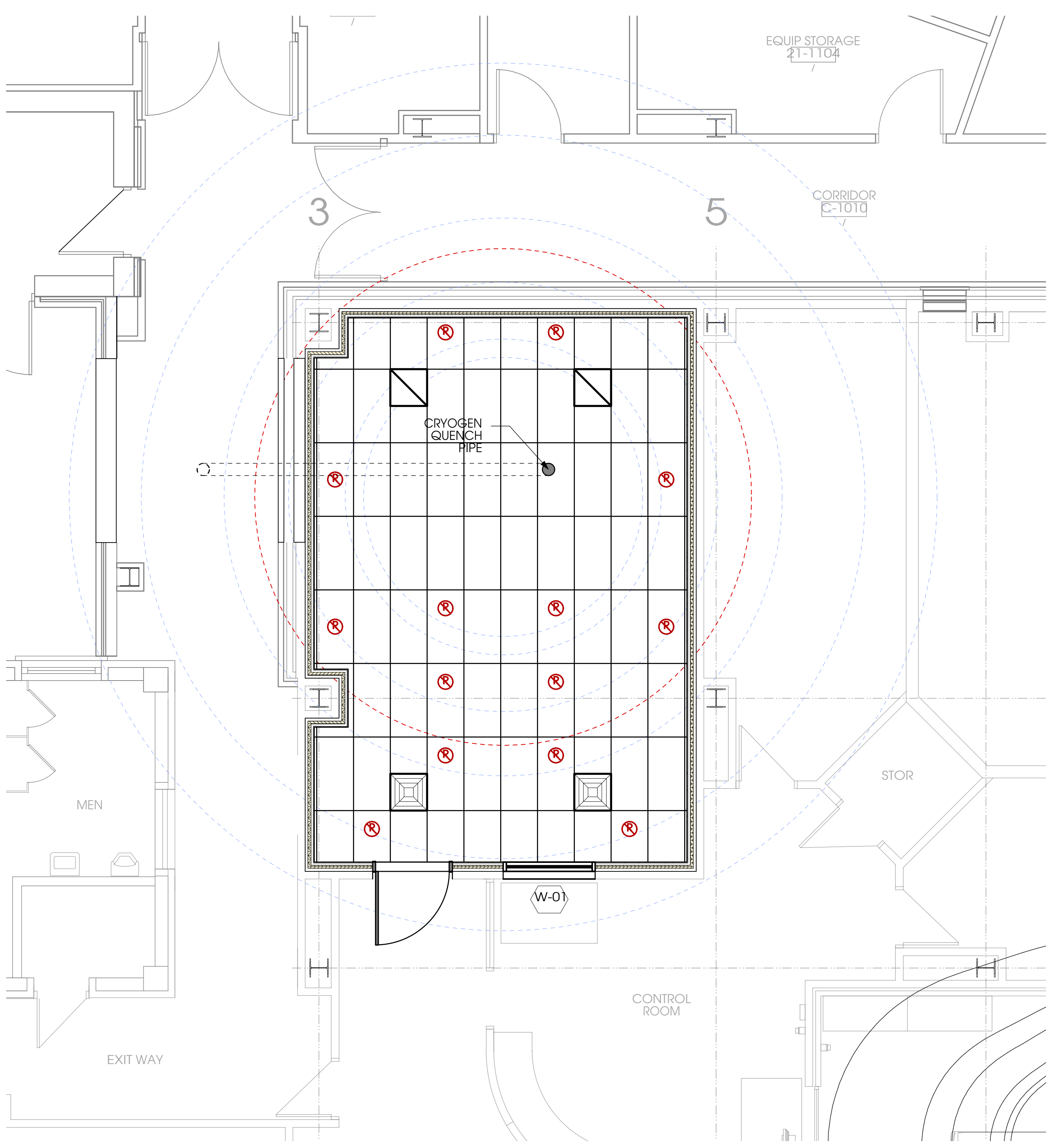
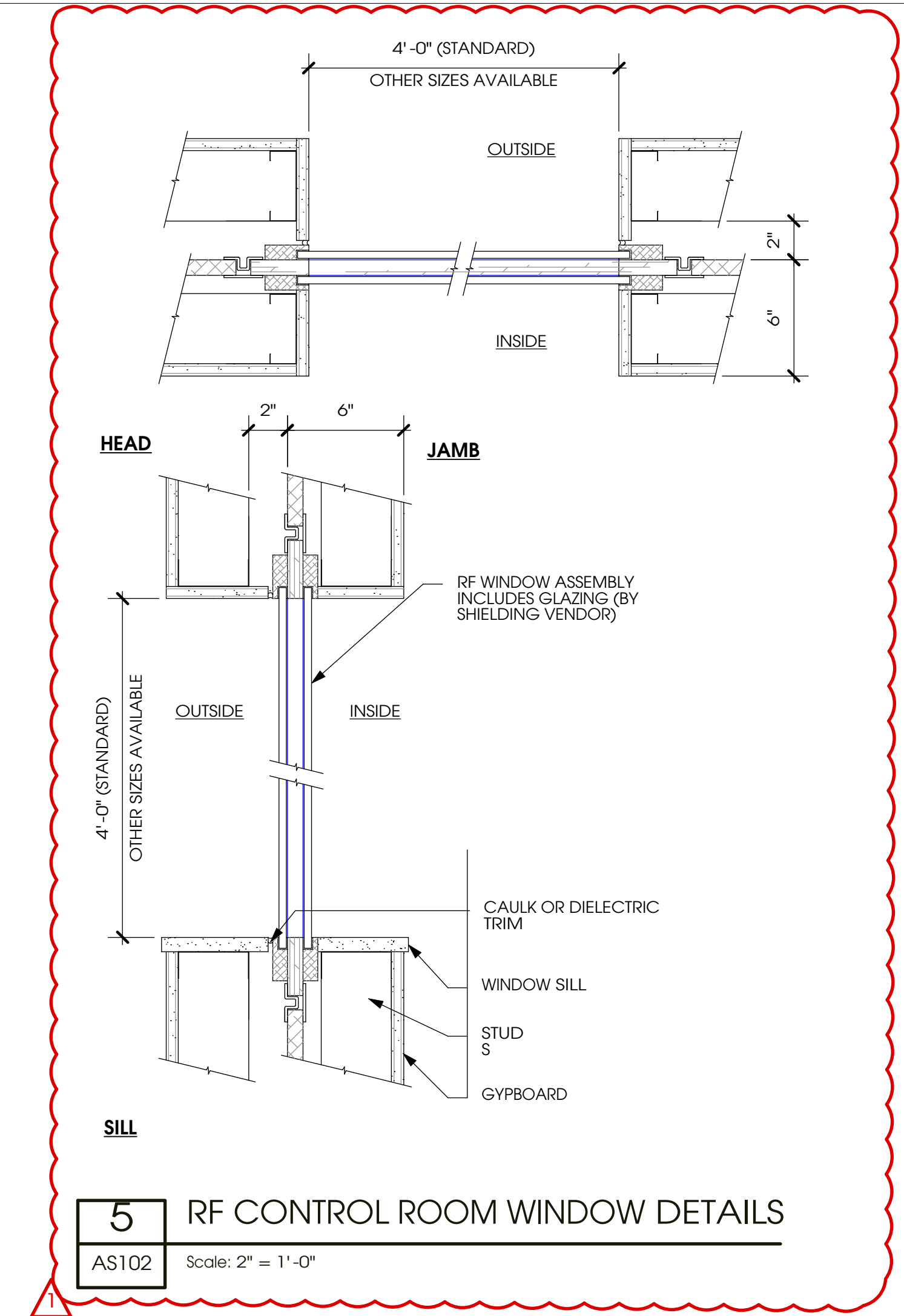
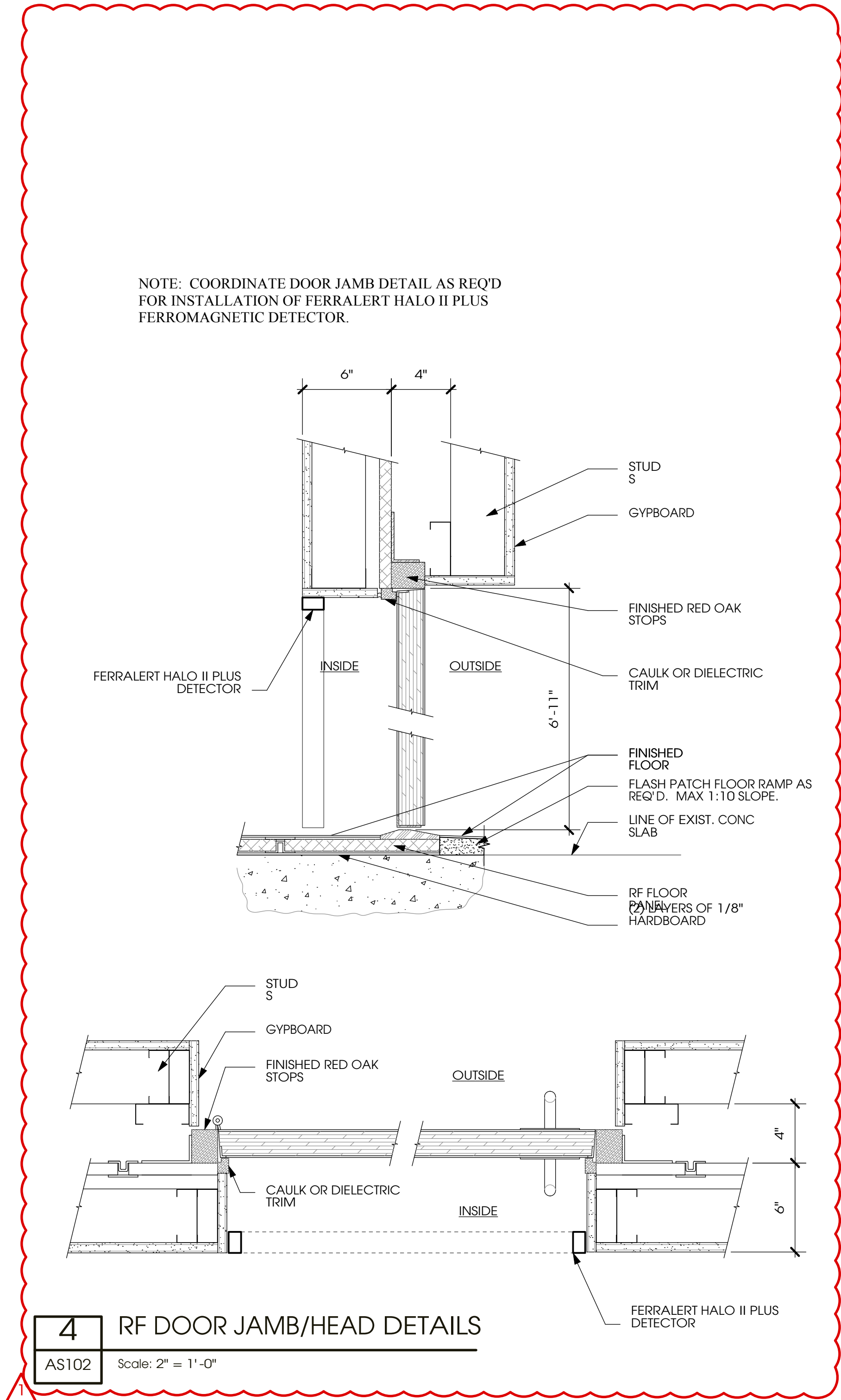


three eighths inch = one foot
one eighth inch = one foot
one quarter inch = one foot
one half inch = one foot
one inch = one foot
one and one half inches = one foot
two inches = one foot
three inches = one foot
four inches = one foot
five inches = one foot
six inches = one foot
seven inches = one foot
eight inches = one foot
nine inches = one foot
ten inches = one foot
eleven inches = one foot
twelve inches = one foot
thirteen inches = one foot
fourteen inches = one foot
fifteen inches = one foot
sixteen inches = one foot
seventeen inches = one foot
eighteen inches = one foot
nineteen inches = one foot
twenty inches = one foot
twenty one inches = one foot
twenty two inches = one foot
twenty three inches = one foot
twenty four inches = one foot
twenty five inches = one foot
twenty six inches = one foot
twenty seven inches = one foot
twenty eight inches = one foot
twenty nine inches = one foot
thirty inches = one foot
thirty one inches = one foot
thirty two inches = one foot
thirty three inches = one foot
thirty four inches = one foot
thirty five inches = one foot
thirty six inches = one foot
thirty seven inches = one foot
thirty eight inches = one foot
thirty nine inches = one foot
forty inches = one foot
forty one inches = one foot
forty two inches = one foot
forty three inches = one foot
forty four inches = one foot
forty five inches = one foot
forty six inches = one foot
forty seven inches = one foot
forty eight inches = one foot
forty nine inches = one foot
fifty inches = one foot
fifty one inches = one foot
fifty two inches = one foot
fifty three inches = one foot
fifty four inches = one foot
fifty five inches = one foot
fifty six inches = one foot
fifty seven inches = one foot
fifty eight inches = one foot
fifty nine inches = one foot
sixty inches = one foot
sixty one inches = one foot
sixty two inches = one foot
sixty three inches = one foot
sixty four inches = one foot
sixty five inches = one foot
sixty six inches = one foot
sixty seven inches = one foot
sixty eight inches = one foot
sixty nine inches = one foot
seventy inches = one foot
seventy one inches = one foot
seventy two inches = one foot
seventy three inches = one foot
seventy four inches = one foot
seventy five inches = one foot
seventy six inches = one foot
seventy seven inches = one foot
seventy eight inches = one foot
seventy nine inches = one foot
eighty inches = one foot
eighty one inches = one foot
eighty two inches = one foot
eighty three inches = one foot
eighty four inches = one foot
eighty five inches = one foot
eighty six inches = one foot
eighty seven inches = one foot
eighty eight inches = one foot
eighty nine inches = one foot
ninety inches = one foot
ninety one inches = one foot
ninety two inches = one foot
ninety three inches = one foot
ninety four inches = one foot
ninety five inches = one foot
ninety six inches = one foot
ninety seven inches = one foot
ninety eight inches = one foot
ninety nine inches = one foot
one hundred inches = one foot



	MED GAS RE: MECH.		HVAC RETURN RE: MECH.
	SPRINKLER HEAD RE: FIRE PROTECTION		X-RAY SIGN RE: ELEC.
	HVAC SUPPLY RE: MECH.		SWITCH RE: ELEC.
	LAY-IN ACT GRID		THERMOSTAT RE: ELEC.
	1x4 LIGHT FIXTURE RE: ELEC.		ELECTRICAL RECEPTACLE RE: ELEC.
	2x4 LIGHT FIXTURE RE: ELEC.		TELEPHONE OUTLET RE: ELEC.
	RECESSED DOWN LIGHT RE: ELEC.		DATA/TELEPHONE OUTLET RE: ELEC.
	EXISTING WALL/ITEM TO REMAIN		NEW DOOR AND FRAME REF. DOOR SCHEDULE
	ITEMS TO BE REMOVED		NEW WINDOW AND FRAME REF. WINDOW SCHEDULE
	NEW LG METAL FRAMED WALL - LEAD LINED WALL		
	NEW LG METAL FRAMED WALL		
	NEW MILLWORK ITEM		

Revisions:	Date
REV 01 - VA REQUESTED CHANGES	12/31/14
100% Construction Documents	08/10/11
95% Construction Documents	05/12/11
50% Schematic Design	01/24/11

CONSULTANTS:	
Structural Engineer: MEP Engineer:	Associate Architect: Cost Estimating:
Bob D. Campbell & Co.TME, Inc.	CMR
4338 Belleview	5201 Johnson Dr., Suite 330
Kansas City, MO 64111	Mission, KS 66205
Fayetteville, AR 72703	One Santa Fe Plaza, Suite 101
	Oklahoma City, OK 73102



ARCHITECT:

RAD

RADIOLOGY PLANNING


RAD-Planning
802 Broadway 5th Floor
Kansas City, MO 64105
www.RAD-Planning.com 816.472.7722

Drawing Title New Plan Second Floor
Approved: Project Director

Project Title SITE PREP FOR MAGNETIC RESONANCE IMAGING EQUIPMENT
Location VETERANS HEALTHCARE SYSTEM OF THE OZARKS 1100 N. COLLEGE AVE, FAYETTEVILLE, AR 72703
Date August 10, 2011

Project Number 564-10-101
Building Number 2
Drawing Number AS102

Office of
Facilities
Management

Department of
Veterans Affairs