

A

B

C

D

E

F

A

B

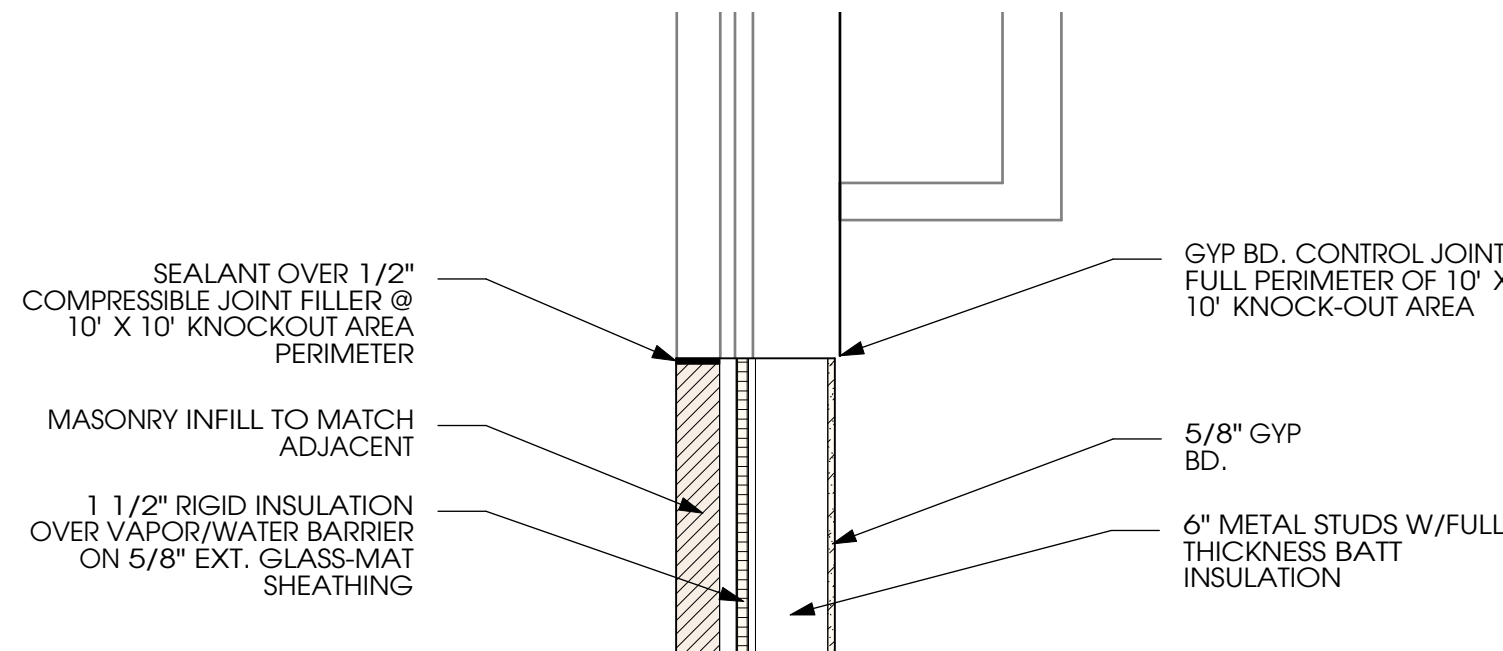
C

D

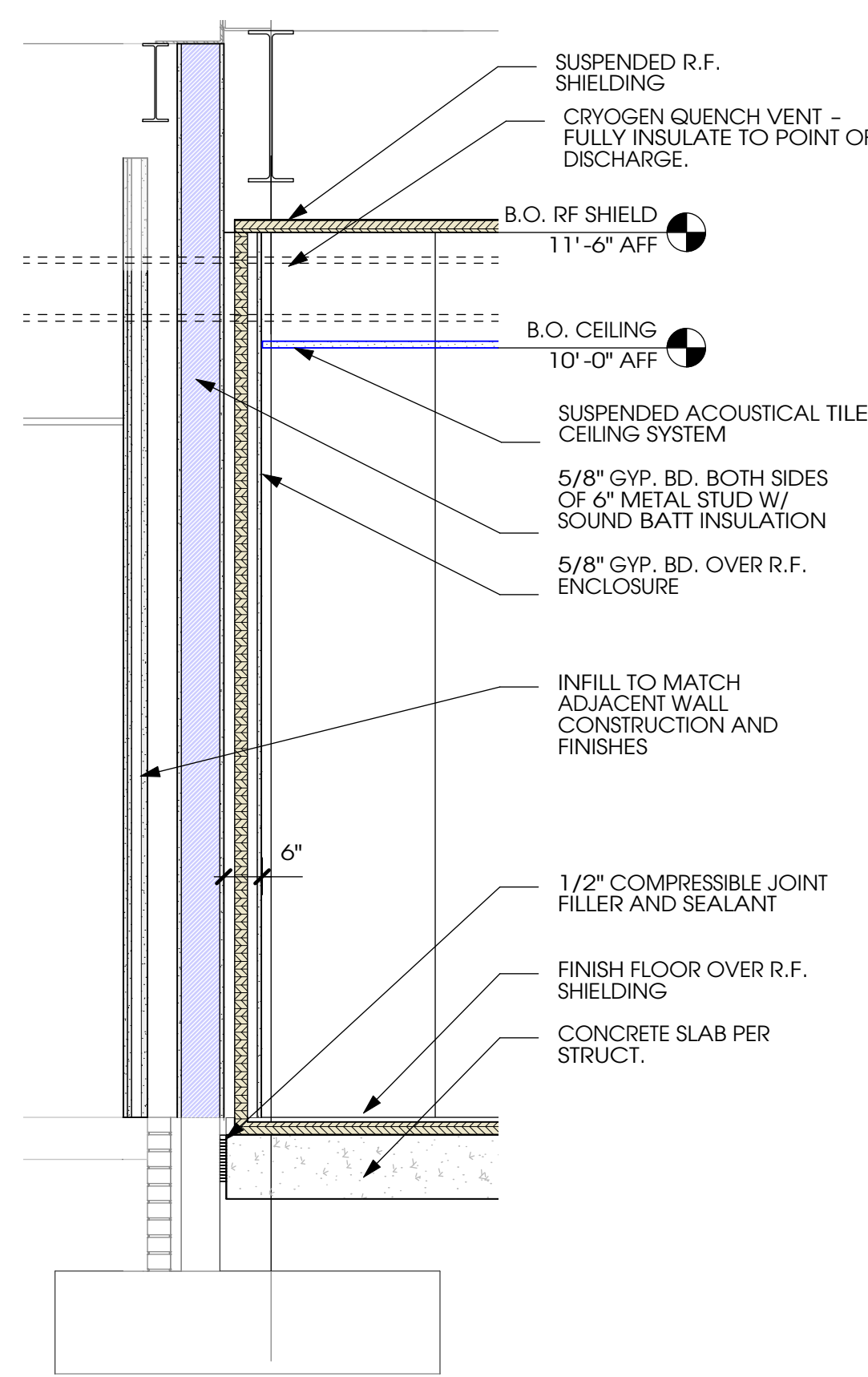
E

F

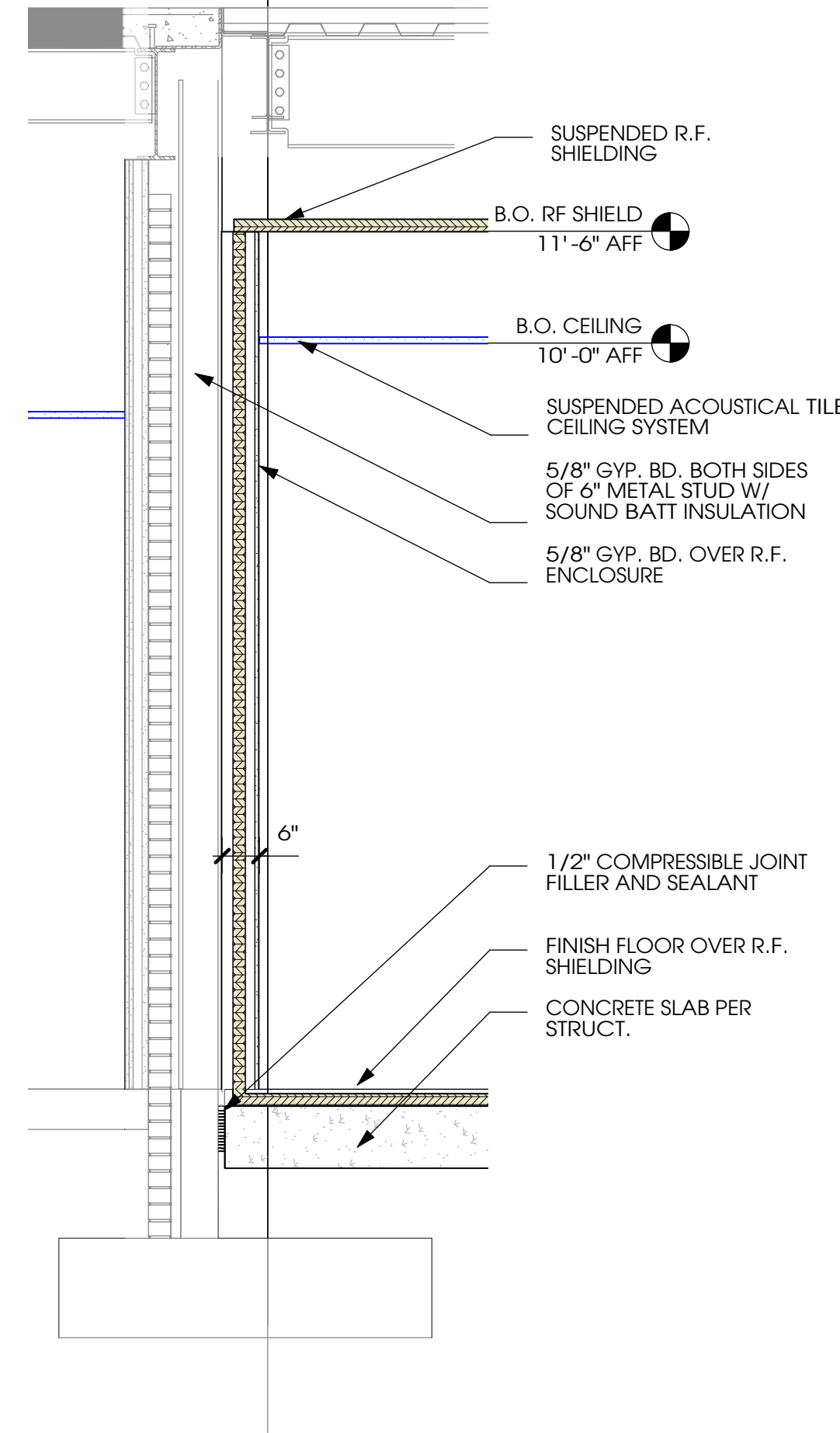
three inches = one foot  
one and one half inches = one foot  
one inch = one foot  
three quarters inch = one foot  
one half inch = one foot  
three eighths inch = one foot  
one quarter inch = one foot  
one eighth inch = one foot



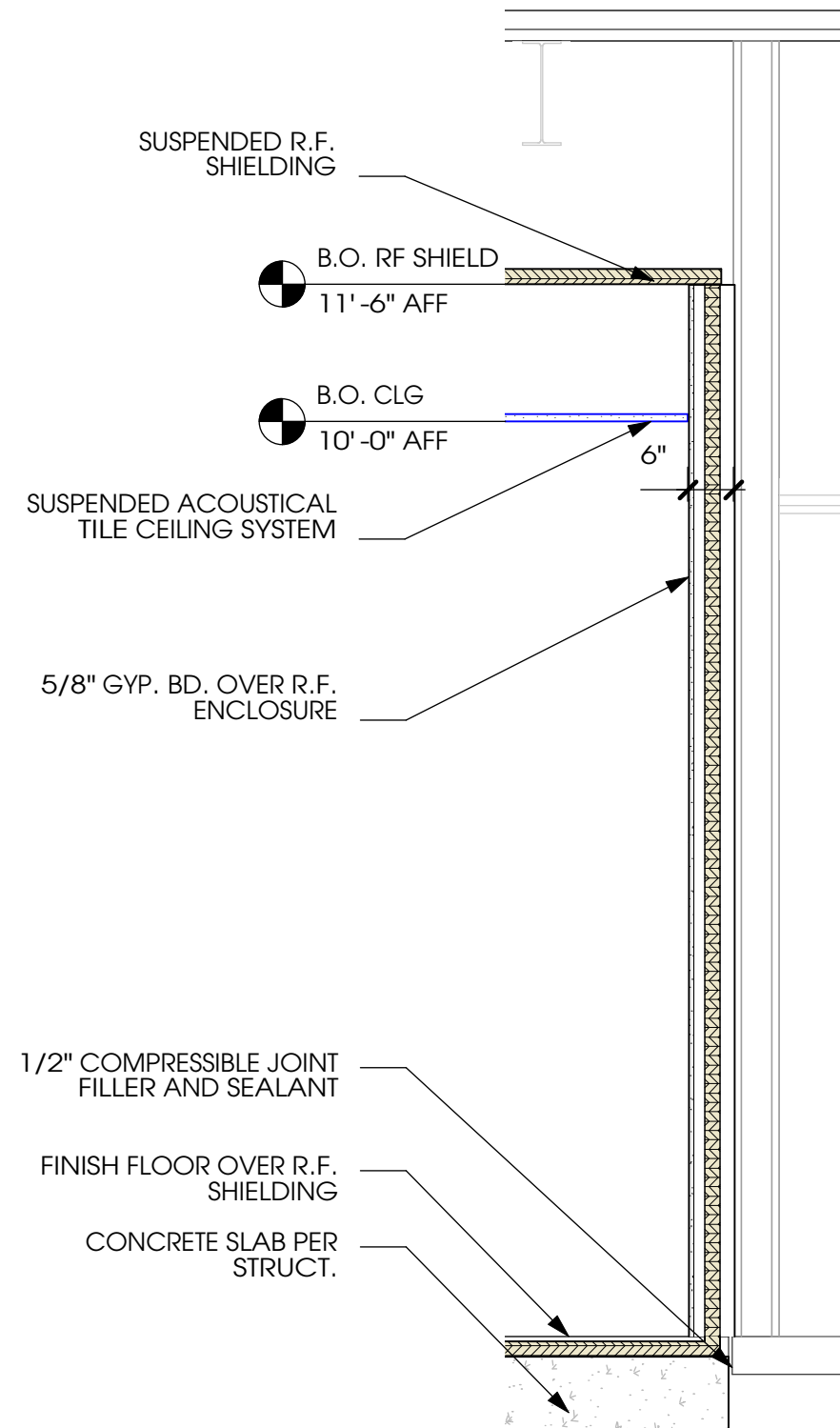
5 EXTERIOR DETAIL  
AS301 Scale: 3/4" = 1'-0" 0 1 2 FT



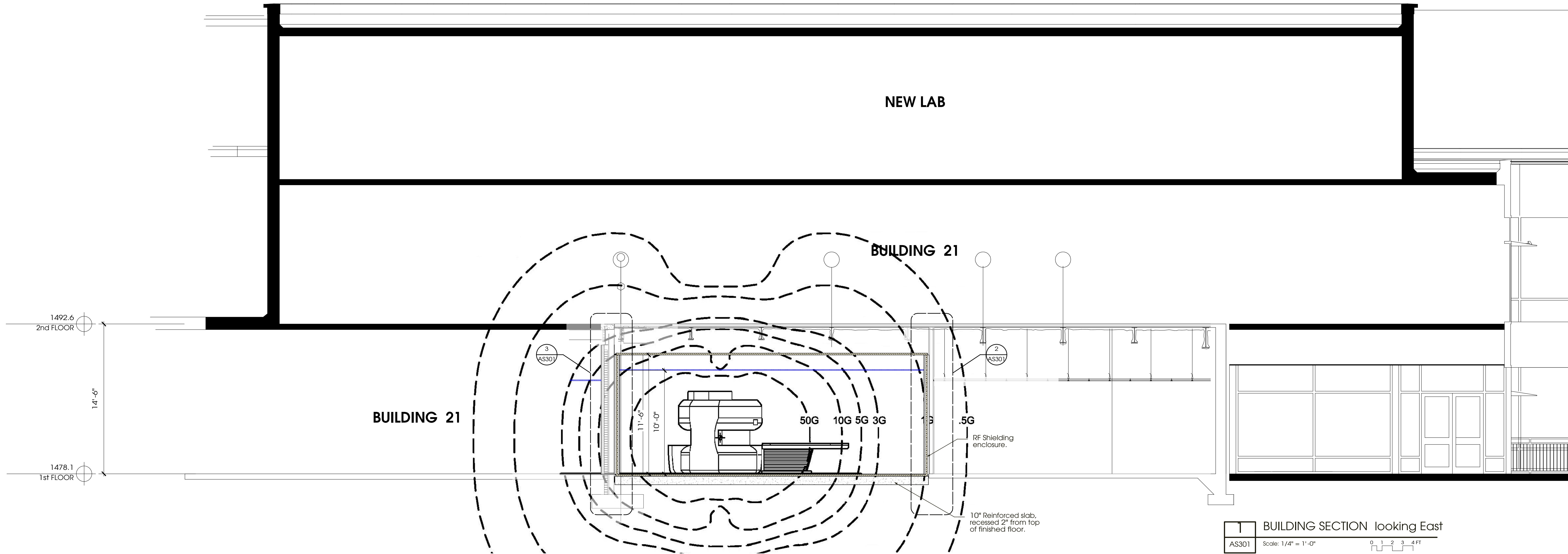
4 MRI SCAN ROOM WEST WALL SECTION  
AS301 Scale: 1/2" = 1'-0" 0 1 2 3 FT



3 MRI SCAN ROOM NORTH WALL SECTION  
AS301 Scale: 1/2" = 1'-0" 0 1 2 3 FT



2 MRI SCAN ROOM WALL SECTION  
AS301 Scale: 1/2" = 1'-0" 0 1 2 3 FT



1 BUILDING SECTION looking East  
AS301 Scale: 1/4" = 1'-0" 0 1 2 3 4 FT

REV 01 - VA REQUESTED CHANGES	12/31/14
100% Construction Documents	08/10/11
95% Construction Documents	05/12/11
50% Schematic Design	01/24/11
Revisions:	Date

#### CONSULTANTS:

Structural Engineer: MEP Engineer:  
Bob D. Campbell & Co.TME, Inc.  
4338 Belleview 2039 N. Green Acres Road  
Kansas City, MO 64111 Fayetteville, AR 72703

Associate Architect:  
SPUR Design  
One Santa Fe Plaza, Suite 101  
Oklahoma City, OK 73102

Cost Estimating:  
CMR  
5201 Johnson Dr., Suite 330  
Mission, KS 66205



#### ARCHITECT:



Drawing Title  
Building and Wall Sections

Approved: Project Director

Project Title  
SITE PREP FOR MAGNETIC  
RESONANCE IMAGING  
EQUIPMENT

Location  
VETERANS HEALTHCARE SYSTEM OF THE OZARKS  
1100 N. COLLEGE AVE, FAYETTEVILLE, AR 72703

Date  
August 10, 2011

Checked  
XX

Drawn  
SB

Project Number  
564-10-101  
Building Number  
2

Drawing Number  
AS301

Office of  
Facilities  
Management



1

2

3

4

5

6

7

8

9