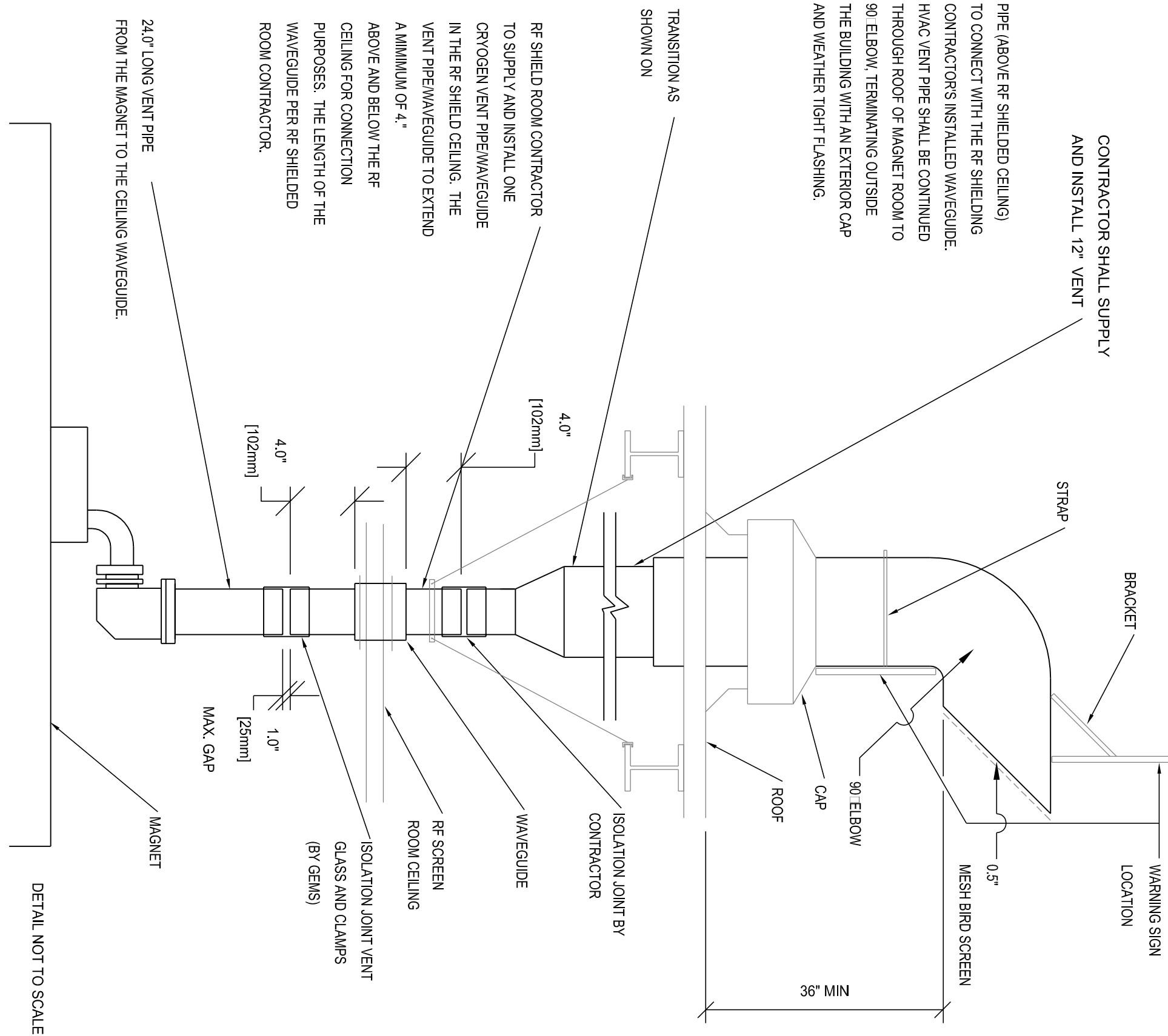


HVAC LEGEND



1 MRI CRYOGEN VENT DETAIL
NOT TO SCALE

- CUSTOMER SUPPLIED**
WARNING SIGN TO READ:

CAUTION

FREEZING GASES AND SMALL OBJECTS MAY BE DISCHARGED WITHOUT NOTICE STAY AT LEAST 20 FT. AWAY.

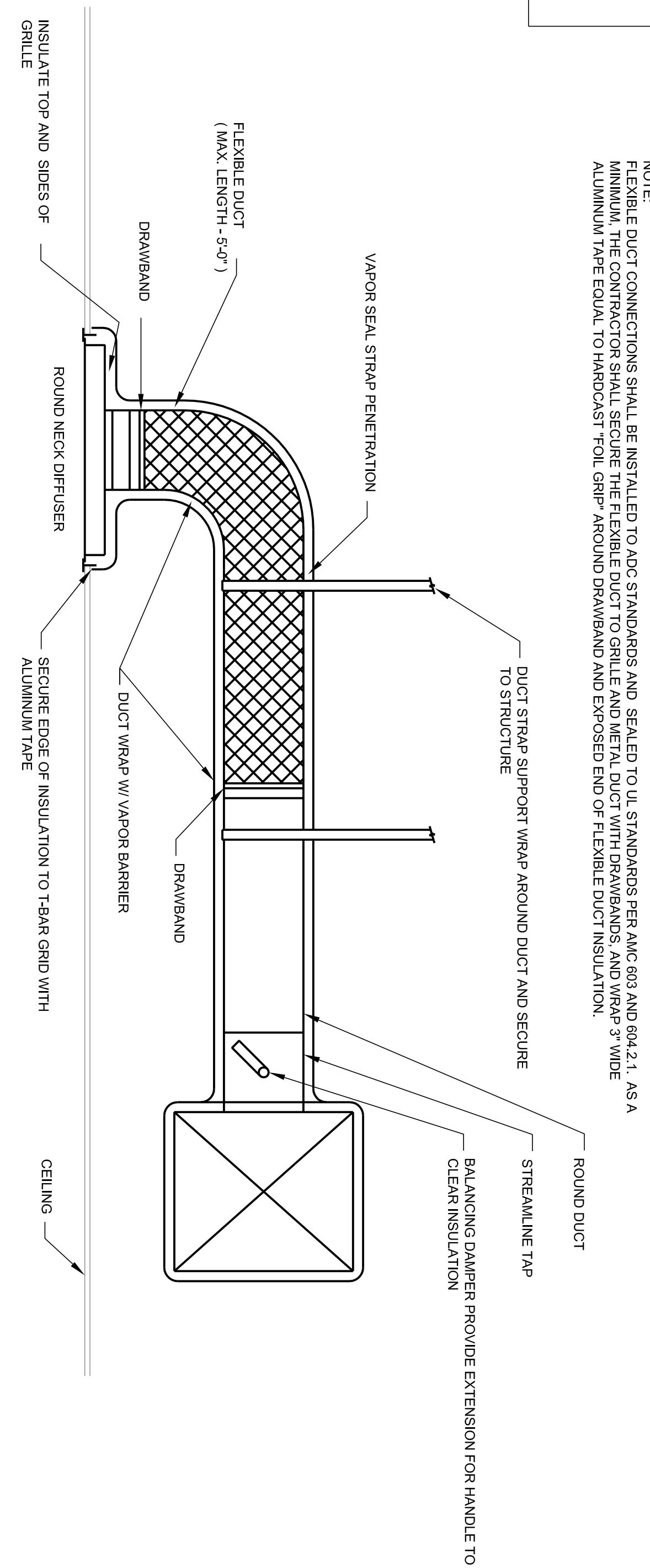
THIS SIGN MUST BE PLACED AT THE EXTERIOR EXIT POINT OF THE CRYOGEN VENT FOR THIS FACILITY. SEE TYPICAL CRYOGEN VENT PIPE DETAIL FOR POSSIBLE WARNING SIGN LOCATIONS.

THE FOLLOWING ARE MATERIALS THAT MUST BE USED FOR CONSTRUCTION OF THE VENT THE MAJOR ROOM.

SS 304
AL 6061-T6

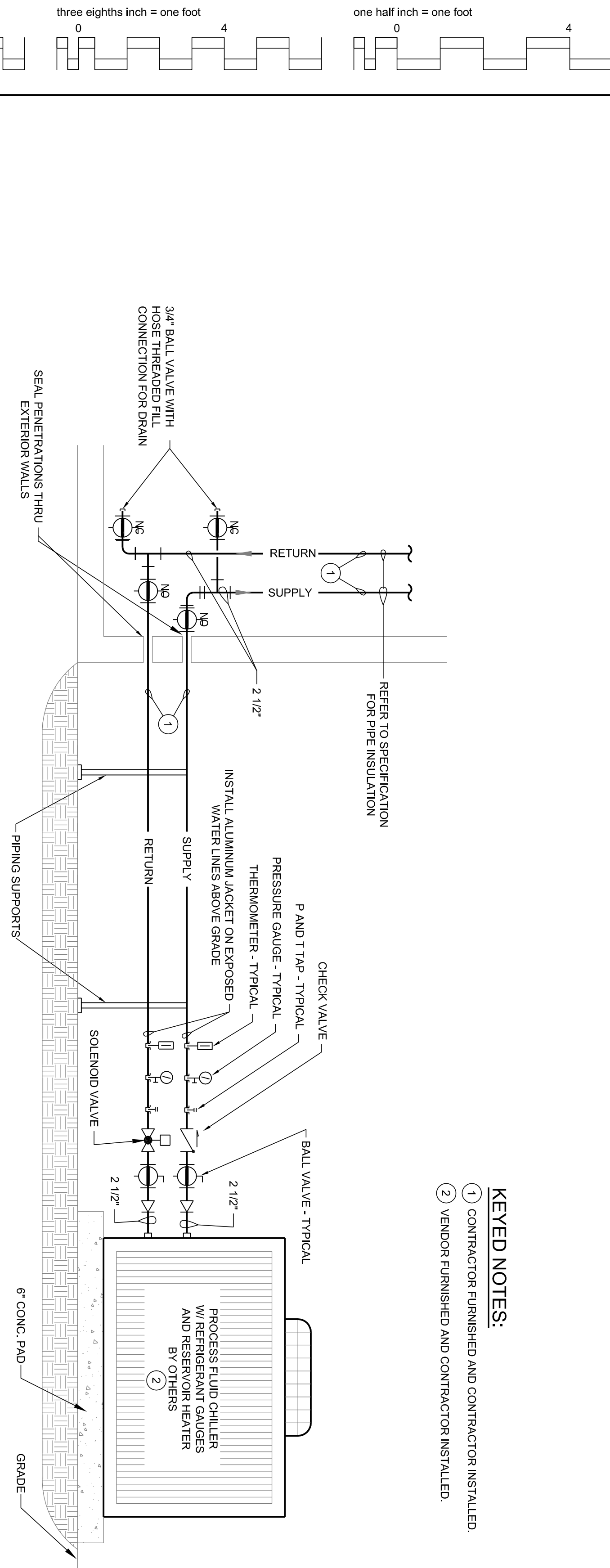
GENERAL NOTES:

 1. ALL PIPING ABOVE THE INSULATING ROOM SHALL BE COPPER.
 2. THE VENT PIPE MUST MEET THE REQUIREMENTS OF THE NHTSA 49CFR 173.34 (a) (1) AND BE FULLY INSULATED TO THE POINT OF DISCHARGE.
 3. THE CRYOGEN VENT WAYS/GUIDE MUST BE CONSTRUCTED OF 304 STAINLESS STEEL OR 6061-T6 ALUMINUM OR STAINLESS STEEL ONLY.



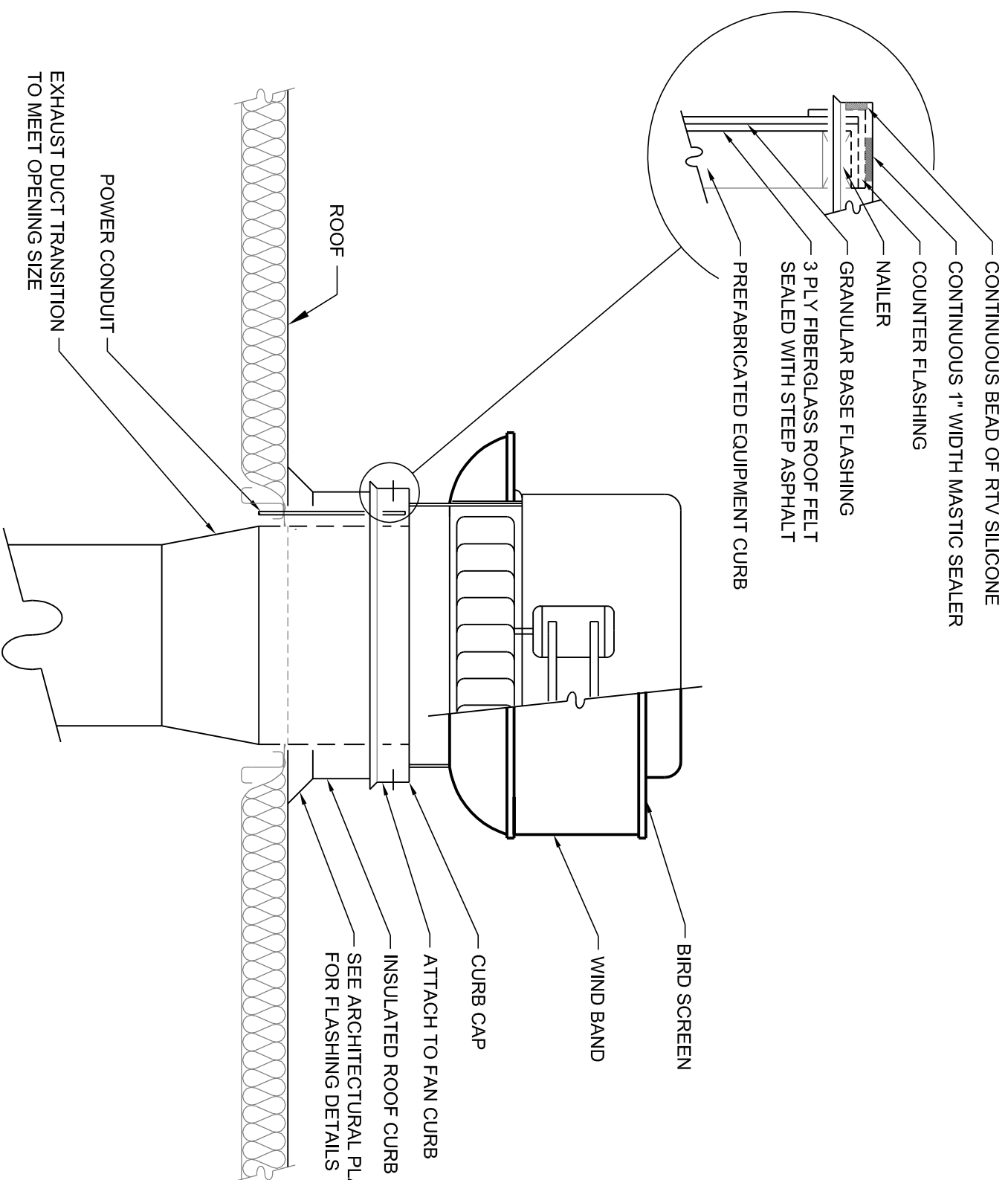
2 DIFFUSER CONNECTION TO ROUND DUCT
NOT TO SCALE

-
- Diagram illustrating the installation of a flexible duct connection to a grill, showing the duct, drawband, vapor seal, and support wrap.
- Labels and components shown in the diagram:
- INSULATE TOP AND SIDES OF GRILLE
 - ROUND NECK OFFUSER
 - DUCT STRAP SUPPORT WRAP AROUND DUCT AND SECURE TO STRUCTURE
 - VAPOR SEAL STRAP PENETRATION
 - FLEXIBLE DUCT (MAX. LENGTH - 5.49')
 - DRAWBAND
 - DUCT WRAP W/ VAPOR BARRIER
 - SECURE EDGE OF INSULATION TO TEAR GRID WITH ALUMINUM TAPE
- Additional text at the bottom of the diagram:
- FLEXIBLE DUCT CONNECTIONS SHALL BE INSTALLED TO AISC STANDARDS AND SEALED TO UL STANDARDS PER AISC 603 AND 604.2.1. AS MINIMUM, THE CONTRACTOR SHALL SECURE THE FLEXIBLE DUCT TO GRILLE AND METAL DUCT WITH DRAWBANDS AND WRAP 3" WIDE ALUMINUM TAPE EQUAL TO HARGRAVE POLI-GRIP AROUND DRAWBAND AND EXPOSED END OF FLEXIBLE DUCT INSULATION.

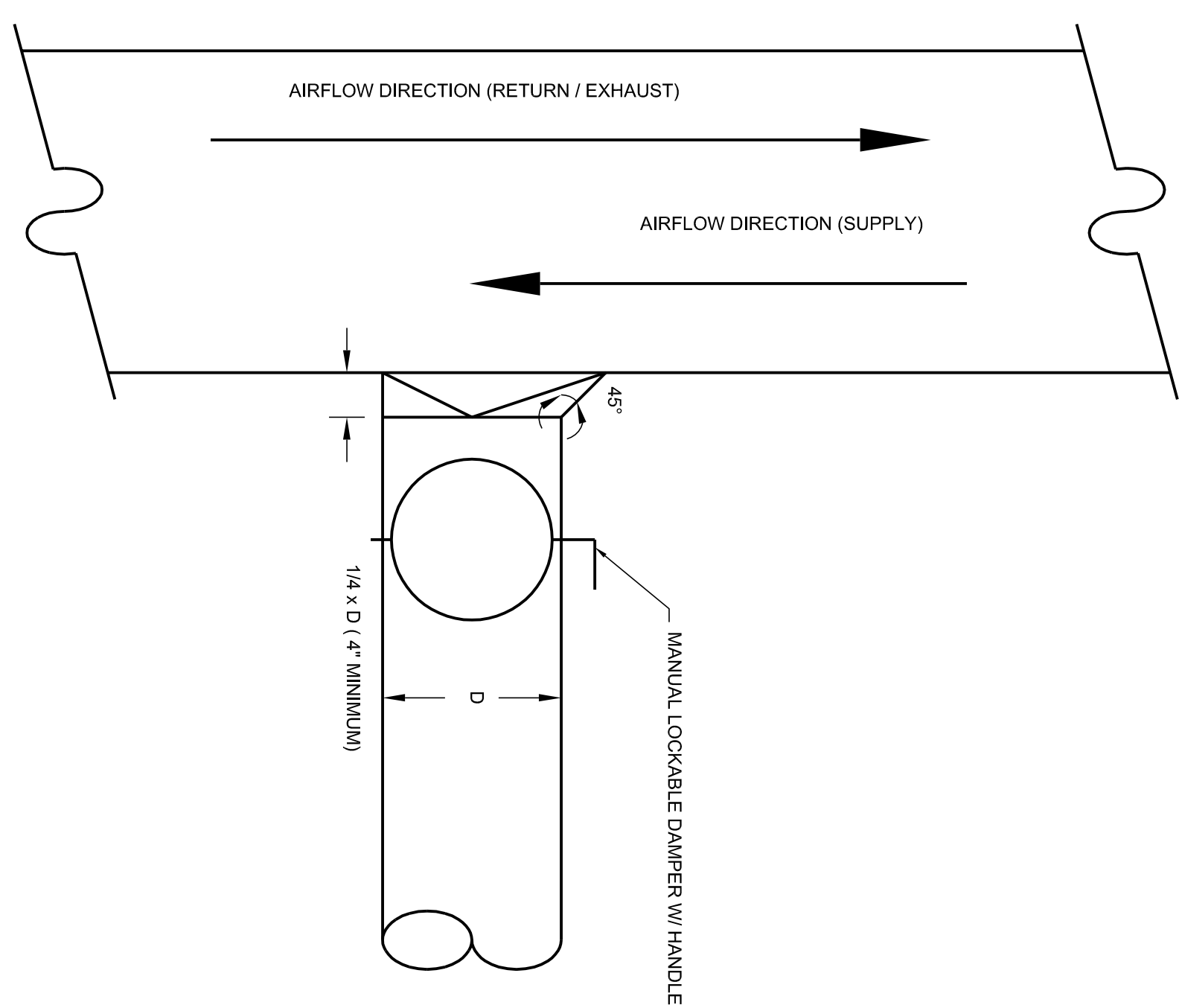


3 PROCESS FLUID CHILLER PIPING DETAIL

NOT TO SCALE




4 ROOFTOP UPBLAST EXHAUST FAN DETAIL
NOT TO SCALE



5 ROUND BRANCH DUCT CONNECTION
NOT TO SCALE

one eighth inch = one foot

0 4 8 16



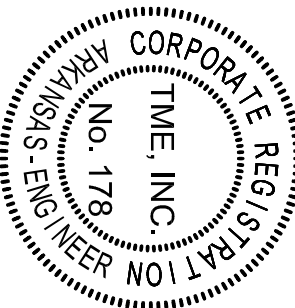
Progress Sat	05/05/17
50% Schematic Design	01/24/17
Revisions:	Date

CONSULTANTS:

Structural Engineer: Bob D. Campbell & Co. 4338 Belview Kansas City, MO 64111	MEP Engineer: TME, Inc. 2038 N. Green Acres Road Fayetteville, AR 72703	Associate Architect: SPUR Design One Santa Fe Plaza, Suite 101 Oklahoma City, OK 73102	Cost Estimating: CMR 5201 Johnson Dr., Suite 330 Mission, KS 66205
---	---	--	--



ARCHITECT:

[illegible]

 Department of
Veterans Affairs