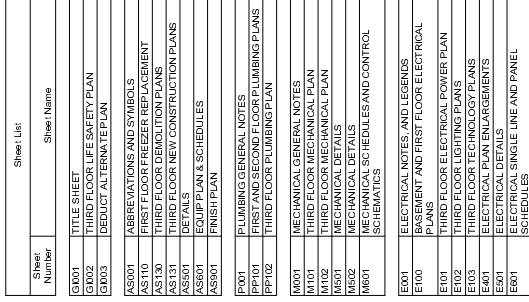


DIETETICS - REPLACEMENT OF REFRIGERATORS AND FREEZERS

100% CONSTRUCTION DOCUMENTS

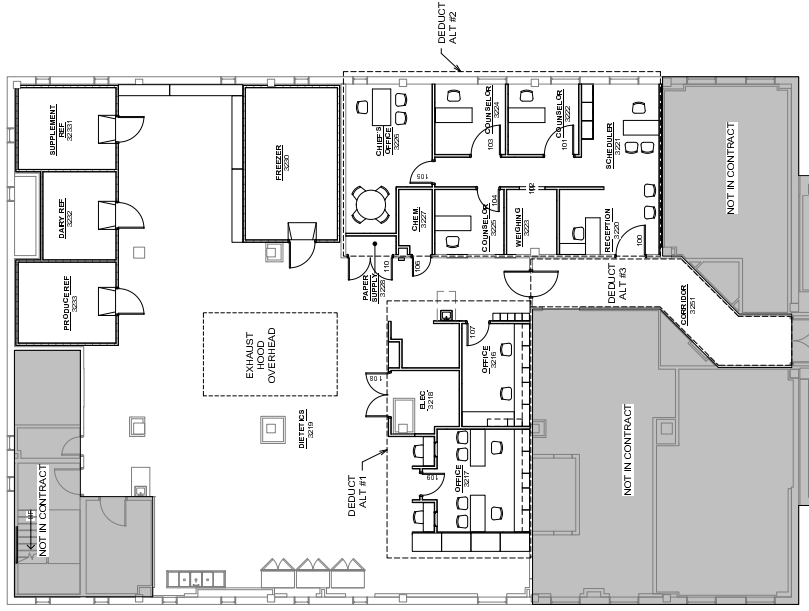
New Room Area by Department			
Room Number	Room Type	Area	Comments
1030	FREEZER	101 SF	
3200	FREEZER	200 SF	
	FREEZER, 2	361 SF	
3202	DAIRY REF	119 SF	
3203	PRODUCE REF	147 SF	
32031	SUPPLEMENT REF	143 SF	
	REFRIGERATOR, 3	415 SF	
	Genent peak 5,	776 SF	

	EXISTING	NEW	+/- %
REFRIGERATOR/FREEZER			
DAIRY REFRIGERATOR	86 SF	119 SF	+ 27%
SUPPLEMENT REFRIG	116 SF	149 SF	+ 28%
PRODUCE REFRIGERATOR	86 SF	147 SF	+ 72%
1ST FLR FREEZER	86 SF	100 SF	+ 16%
3RD FLR FREEZER	104 SF	280 SF	+ 34%
TOTALS	567 SF	715 SF	+ 36%



DIRECTOR	ITP CHAIRMAN
CHIEF, FACILITIES MANAGEMENT	SAFETY OFFICER
INAGE	

DESIGNED: UJI	DRAWN: ARO
APPROVED: DA	CHECKED: DA
CLIENT PROJECT NUMBER	
575-14-700	
PROJECT NUMBER	
13.1069	
DATE	
09/26/2014	
TITLE SHEET	
GI001	

DEDUCT ALTERNATES:

Alternate No. 1: Deduct kitchen staff offices remodel. Deduct all electrical, mechanical, plumbing, communications and safety work related to this part of the remodel. For limits of the work area see drawing Deduct Alternates drawing sheet.

Alternate No. 2: Deduct dietetics counseling offices remodel. Deduct all electrical, mechanical, plumbing, communications and safety work related to this part of the remodel. For limits of the work area see drawing Deduct Alternates drawing sheet.

Alternate No. 3: Deduct remodel finish his in Corridor 325T.

[illegible]

Interior Design
COVERCLARK ASSOCIATES
1936 Mark & Street
Denver, CO 80202
Tele: 303-783-0040

MEP Engineer
APOGEE CONSULTING GROUP
7330 Chapel Hill Road,
Suite 202
Raleigh, NC 27607

DESIGN ARCHITECTURE INC.

DESIGN

GUIDON

SUSTAINABLE ARCHITECTURE + ENGINEERING
317 500 6388 WWW.GUIDONDESIGN.COM
N. CAPITOL AVE., Suite 100 NDANAPOLIS, IN 46204



GRAND JUNCTION VAMC
DIETETICS - REPLACEMENT OF
REFRIGERATORS AND FREEZERS
Dept. of Veterans Affairs 2121 North Avenue
Grand Junction, CO 81501

DESIGNED: UJ	DRAWN: ARC
APPROVED:	CHECKED: DA
CLIENT PROJECT NUMBER	
575-14-100	
PROJECT NUMBER	
13.1069	
DATE	

① DEDUCT ALTERNATE PLAN LEVEL 3
1/8" = 1'-0"

[illegible]

MCP Engineer
APODEE CONSULTING GROUP
730 Chapel Hill Road,
Suite 202
Raleigh, NC 27607
Tel: 919-858-7420

REMOVE EXISTING DOOR HAM FRAME & HARDWARE FOR RELEASES INDICATED	REMOVE EXISTING WALLS AS REQUIRED FOR OPENING	REMOVE EXISTING WINDOW IN ITS ENTIRETY	REMOVE EXISTING WALLS AS INDICATED FOR PROPOSED WORK RE STRUCTURAL
REMOVE EXISTING WALL IN ITS ENTIRETY	REMOVE EXISTING METAL STUD PARTITION IN ITS ENTIRETY		

																	
HMC SUPPLY DIFFUSER	HMC RETURN AIR GRILLE	RECESSED FLUORESCENT	SURFACE MOUNTED FLUORESCENT	HMC SUPPLY DIFFUSER	HMC RETURN AIR GRILLE	RECESSED FLUORESCENT	SURFACE MOUNTED FLUORESCENT	INCANDESCENT SURFACE MOUNT LIGHTING	INCANDESCENT WALL MOUNTED LIGHTING	PENDANT LIGHT	ACCESS PANEL	EXIT LIGHTING	TRACK LIGHTING	PARKING LOT LIGHTING	UTILITY POLE	SPEAKER	SMOKE DETECTOR

			
EARTH	SAND MORTAR/PLASTER CEMENT	RIGID INSULATION	PARTICLE BOARD
			
GRAVEL	STEEL	ROUGH WOOD FRAMING	CERAMIC TILE
			
CONCRETE	ALUMINUM	BLOCKING OR SHIMMING	ACOUSTIC TILE
			
PRECAST CONCRETE	BRASS / BRONZE	FINISH WOOD	GYP BD CLG
			
CONCRETE MASONRY UNIT	BATT INSULATION	PLYWOOD	GYPB GRID CLG
			
BRICK	GYPSON BOARD		ACOUSTIC TILE

[illegible]AS001

[illegible][illegible][illegible][illegible]

Interior Design
COVERCLARK ASSOCIATES
1936 Mark & Stre
Denver, CO 8020
Tel: 303-783-00

MEP Engineer
APOGEE CONSULTING GROUP
7330 Chapel Hill Road,
Suite 202
Raleigh, NC 27607
Tel: 919-858-7420

GUIDON DESIGN
N. CAPITOL AVE., Suite 100, N. MANLY, IN 46204
217.805.6388 WWW.GUIDONDESIGN.COM
SUSTAINABLE ARCHITECTURE + ENGINEERING

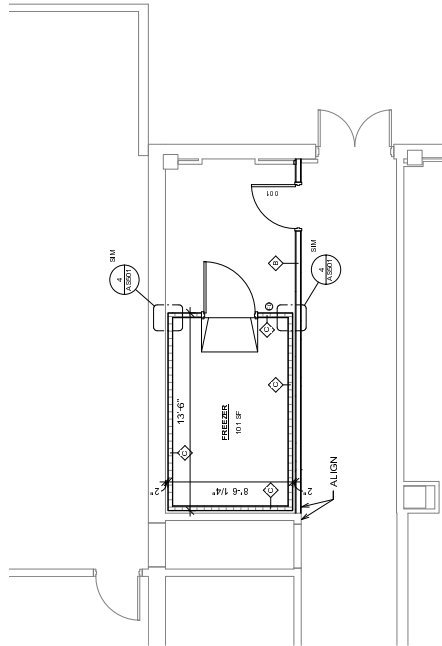


GRAND JUNCTION VAMC
DIETETICS - REPLACEMENT OF
REFRIGERATORS AND FREEZERS
Dept. of Veterans Affairs 2121 North Avenue
Grand Junction, CO 81501
100% CONSTRUCTION DOCUMENTS

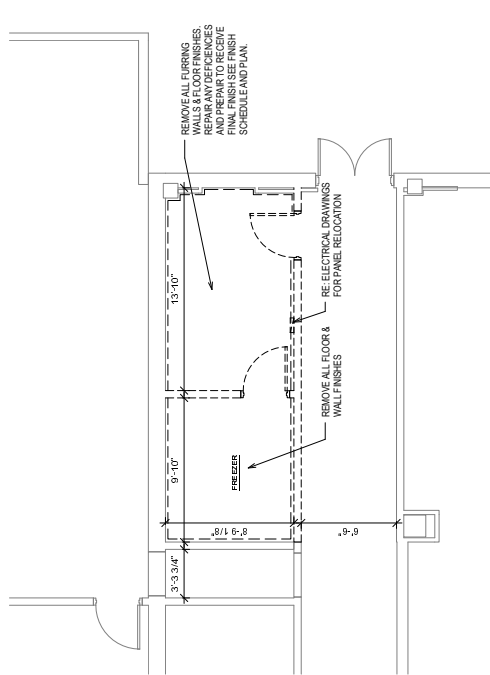
DESIGNED: UJ	DRAWN: ARO
APPROVED:	CHECKED: DA
CLIENT PROJECT NUMBER	
575-14-100	
PROJECT NUMBER	
13.1069	
DATE	

09/26/2014	FIRST FLOOR FREEZER REPLACEMENT
------------	------------------------------------

AS110



1
AS110



2
AST10

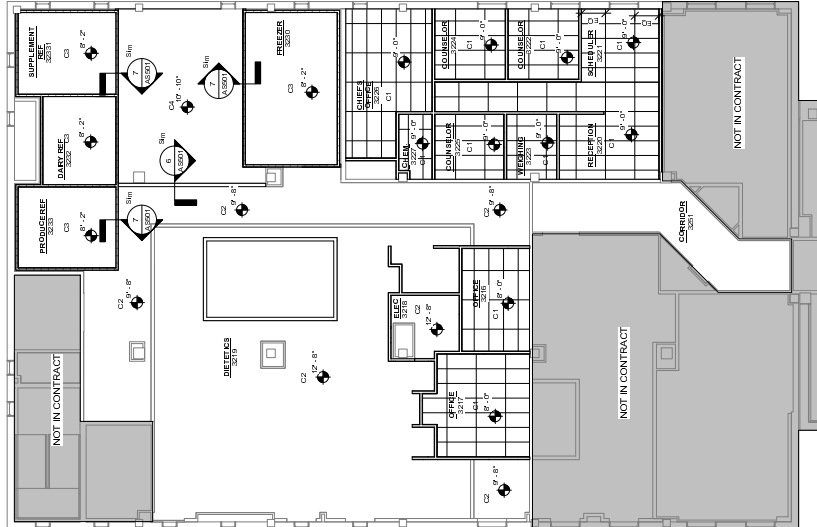
PLAN KEY NOTES	
P 1	RELOCATE EXISTING SINK TO NEW LOCATION.
P 2	EXISTING REACH IN REFRIGERATORS FINAL LOCATION. MAY BE MOVED DURING CONSTRUCTION TO PROVIDE EASE IN CONSTRUCTION.

GENERAL CONSTRUCTION NOTES

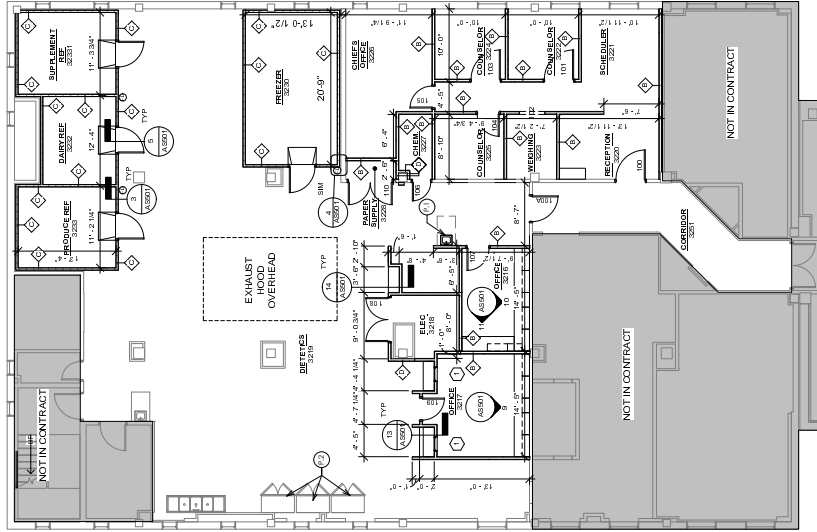
1. ALL WALLS TO BE TYPE 'X' UNLESS NOTED OTHERWISE. IE: TYPE 'X' WALLS SHALL BE CONSTRUCTED TO RESIST TO MINIMUM 2 HOURS FIRE RATING. ALL WALLS SHALL BE FINISHED TO MATCH EXISTING FINISHES. ALL WALLS SHALL BE FINISHED TO MATCH EXISTING FINISHES.
2. PROVIDE ESSENTIAL AT ALL UNITS OR CRACKS WHICH OCCUR. PROVIDE ESSENTIAL AT ALL UNITS OR CRACKS WHICH OCCUR.
3. WHEN REPAIRS ARE MADE TO EXISTING WALLS, THE REPAIRS SHALL BE MADE TO MATCH EXISTING FINISHES. WHEN REPAIRS ARE MADE TO EXISTING WALLS, THE REPAIRS SHALL BE MADE TO MATCH EXISTING FINISHES.
4. PROVIDE ESSENTIAL AT ALL UNITS OR CRACKS WHICH OCCUR. PROVIDE ESSENTIAL AT ALL UNITS OR CRACKS WHICH OCCUR.
5. ALL SURFACES AND SUBSTRATES SHALL BE PREPARED FOR FINISHES. ALL SURFACES AND SUBSTRATES SHALL BE PREPARED FOR FINISHES.
6. PROVIDE ESSENTIAL AT ALL UNITS OR CRACKS WHICH OCCUR. PROVIDE ESSENTIAL AT ALL UNITS OR CRACKS WHICH OCCUR.
7. PROVIDE ESSENTIAL AT ALL UNITS OR CRACKS WHICH OCCUR. PROVIDE ESSENTIAL AT ALL UNITS OR CRACKS WHICH OCCUR.
8. PROVIDE ESSENTIAL AT ALL UNITS OR CRACKS WHICH OCCUR. PROVIDE ESSENTIAL AT ALL UNITS OR CRACKS WHICH OCCUR.
9. PROVIDE ESSENTIAL AT ALL UNITS OR CRACKS WHICH OCCUR. PROVIDE ESSENTIAL AT ALL UNITS OR CRACKS WHICH OCCUR.
10. PROVIDE ESSENTIAL AT ALL UNITS OR CRACKS WHICH OCCUR. PROVIDE ESSENTIAL AT ALL UNITS OR CRACKS WHICH OCCUR.

CEILING LEGEND

C1	2X4 ACoustical CEILING TILE, WHITE
C2	EXISTING CEILING TO REMAIN
C3	WALK-IN UNIT CEILING BY MANUFACTURER
C4	NEW GYP BD ON EXISTING STRUCTURE



3. REFLECTED CEILING PLAN LEVEL 3
1/8" = 1'-0"



1. FLOOR PLAN LEVEL 3
1/8" = 1'-0"

REVISIONS	DATE	REMARKS

Interior Design
COVETALARK
1933 Main St, Suite 202
Denver, CO 80202
Tel: 303.783.0040

MFP Engineer
APOGEE CONSULTING GROUP
7230 Chapel Hill Road
Raleigh, NC 27607
Tel: 919.656.7420

DESIGN ARCHITECT-ENGINEER
GUIDON
905 N. CAMDEN AVE. SUITE 200
DENVER, CO 80202
Tel: 303.733.1000



GRAND JUNCTION VAWC
DIELECTICS - REPLACEMENT OF REFRIGERATORS AND FREEZERS
Dept. of Veterans Affairs 2121 North Avenue
Grand Junction, CO 81501
100% CONSTRUCTION DOCUMENTS

REVISION:	UJ	AKO
DATE:	09/28/2014	09/28/2014
PROJECT NUMBER:	131069	131069
CLIENT PROJECT NUMBER:	575-14-100	575-14-100
PROJECT NUMBER:	131069	131069
DATE:	09/28/2014	09/28/2014
THIRD FLOOR NEW CONSTRUCTION PLANS	AS131	AS131

MFP Engineer
APGEE CONSULTING
GROUP
7330 Chapel Hill Road,
Suite 202
Raleigh, NC 27607
Tel: 919-558-7420

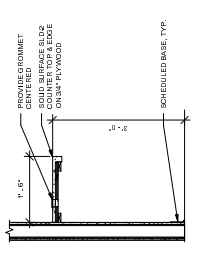
GUIDON DESIGN
905 N. CAPITOL AVE., Suite 100 N. DAKOTA, N 58204
317.800.6388 WWW.GUIDONDESIGN.COM
SUSTAINABLE ARCHITECTURE + ENGINEERING



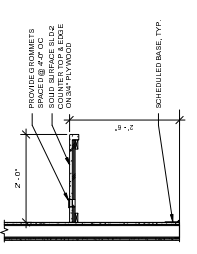
GRAND JUNCTION VAMC
DIETETICS - REPLACEMENT OF
REFRIGERATORS AND FREEZERS
Dept. of Veterans Affairs 2121 North Avenue
Grand Junction, CO 81501
100% CONSTRUCTION DOCUMENTS

APPROVED:	UJ	AKU
	--	DA
CLIENT PROJECT NUMBER		
575-14-100		
PROJECT NUMBER		
13.1069		
DATE		
09/26/2014		
DETAILS		

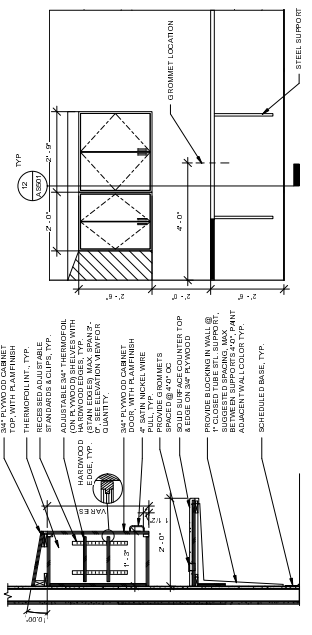
AS501



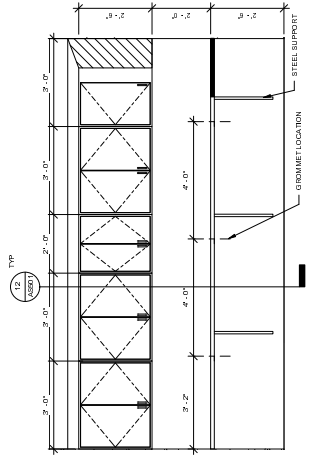
STANDING WORKSTATION SECTION, TYP
3/4" = 1'-0"



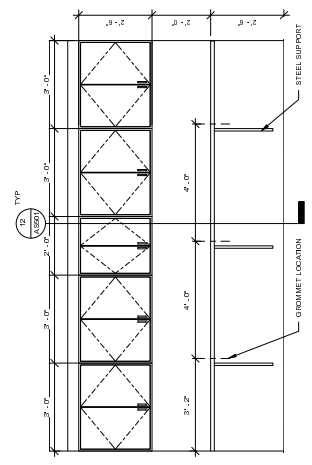
WORKSTATION SECTION, TYPE
3/4" = 1'-0"



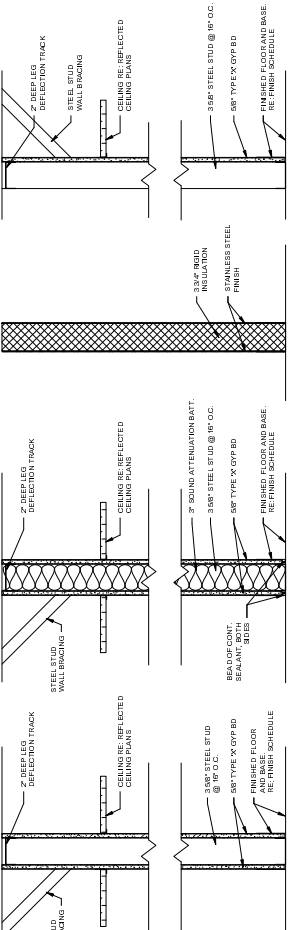
⑫ CABINET SECTION, TYP $3/4" = 1'-0"$



10 OFFICE 3216 CASEWORK ELEVATION
1/2' = 1'-0"



9 OFFICE 3217 CASEWORK ELEVATION
1/2" = 1'-0"



TYPE 'A'

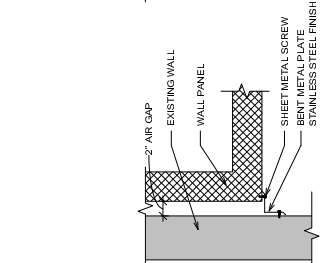
PARTITION TYPES
1/2" = 1'-0"

1

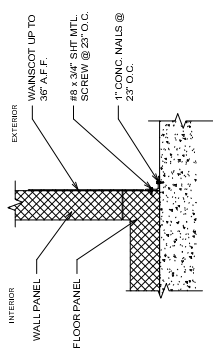
WALL @ WALK-IN UNIT
1" = 1'-0"

SOFFIT WALL
1" = 1'-0"

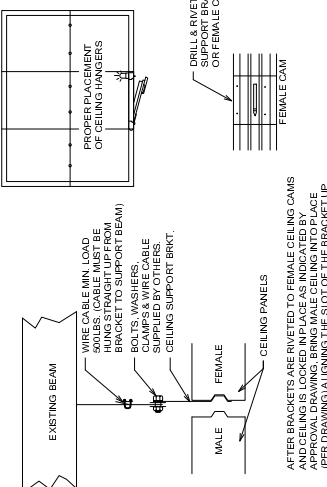
WALK-IN RAMP DETAIL
1 1/2" = 1'-0" 3'-10"



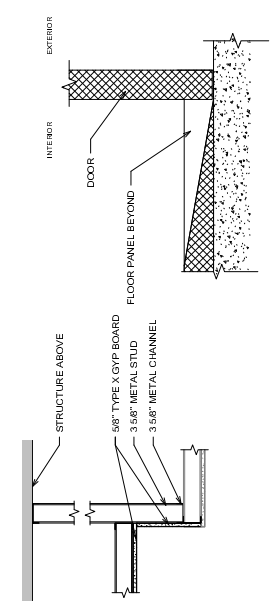
WALK-IN TRIM ANGLE
1/2" = 1'-0"



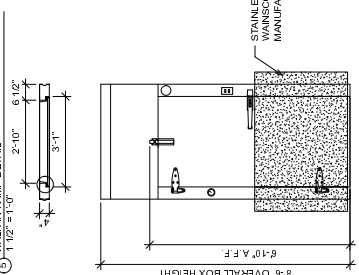
WALK-IN FLOOR DETAIL
1 1/2" = 1'-0"



2 WALK-IN CEILING SUPPORT DETAILS
 $\frac{1}{4}" = 1'-0"$

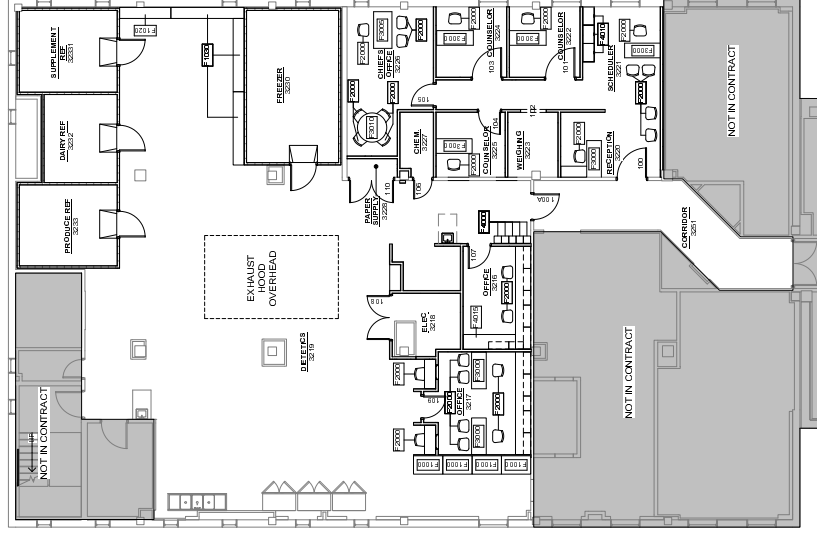


WALK-IN DOOR DETAIL
1/2" = 1'-0"



WALK-IN DOOR DETAIL
1/2" = 1'-0"

EQUIPMENT SCHEDULE - VA PROVIDED N.C.			
MARK	DESCRIPTION	COUNT	REMARKS
F1000	SHELVING, 30" x 48" DISH RACKS	4	
F1020	SHELVING, 70" x 116" DRY GOOD SHELVING	1	
F1030	SHELVING, 10" x 116" DRY STORAGE SHELVING	1	
F2000	DESK CHAIR OFFICE CHAIR	26	
F2010	DESK CHAIR OFFICE CHAIR	1	
F3005	DESK, 60" x 30"	1	
F3010	TABLE, 60" x 30" Diameter	1	
F4000	LOCKER, 12" x 12"	5	
F4010	LOCKER, 12" x 12"	3	
F4015	FILE CABINET, DISK-2 DRAWER	1	

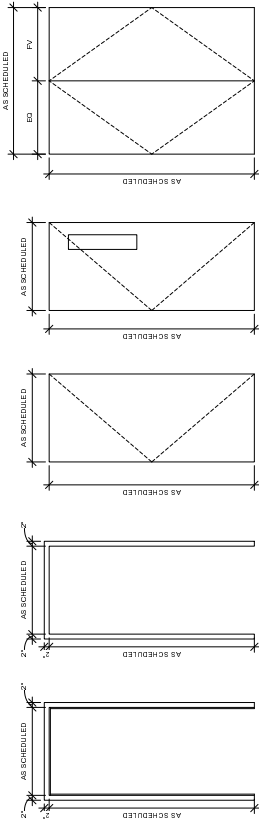


8 EQUIPMENT PLAN LEVEL 3
1/8" = 1'-0"

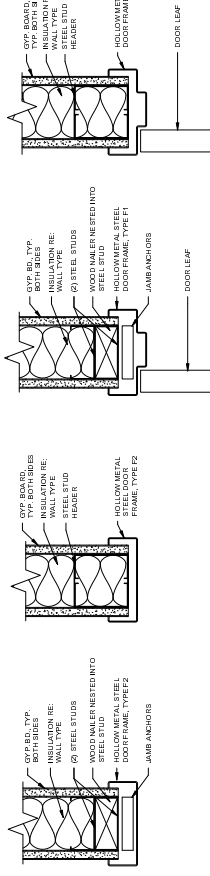
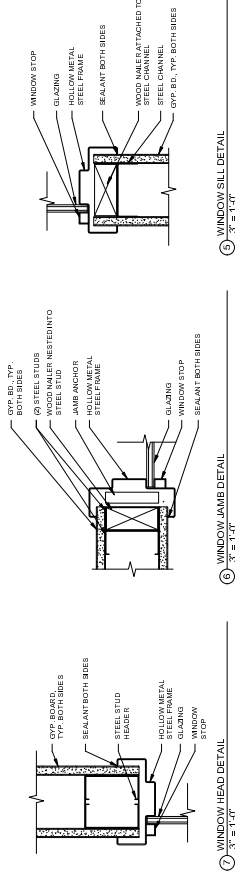
DOOR & FRAME GENERAL NOTES

1. ALL INLOW METAL DOORS AND FRAMES SHALL BE FACTORY PRIMED AND RECEIVE PAINT FINISH ON SITE.
2. ALL DOORS ARE 1 3/4" THICK UNLESS OTHERWISE NOTED.
3. USE TEMPERED GLASS BELOW 2'-0" AFF IN DOORS (OR WIRE-GLASS IF FIRE-RATED ASSEMBLY IS REQUIRED) TO MEET CODE.
4. SIZES INDICATED ARE FINISHED DIMENSIONS; FIELD VERIFY ALL OPENINGS.
5. ALL DOORS ARE TO BE OPERABLE FROM BOTH DIRECTION UNLESS

DOOR SCHEDULE												
		DOORS				NOMINAL DIMENSIONS			DOOR FRAMES			
Mark	Type	Material	Finish	Height	Width	Thickness	Type	Material	Finish	Hardware Set	Comments	
100	A	BIRCH VENEER	CLEAR	7'-0"	3'-6"	1 3/4"	F1	HM	PT-5	HW 7	PREP FOR CARD READER	
100A	A	BIRCH VENEER	CLEAR	7'-0"	3'-6"	1 3/4"	F1	HM	PT-5	HW 7	PREP FOR CARD READER	
101	A	BIRCH VENEER	CLEAR	7'-0"	4'-0"	1 3/4"	F1	HM	PT-5	HW 2	PREP FOR CARD READER	
102	N/A	N/A	N/A	7'-0"	3'-6"	0"	F2	HM	PT-5	N/A		
103	A	BIRCH VENEER	CLEAR	7'-0"	4'-0"	1 3/4"	F1	HM	PT-5	HW 2		
104	A	BIRCH VENEER	CLEAR	7'-0"	3'-0"	1 3/4"	F1	HM	PT-5	HW 1		
105	A	BIRCH VENEER	CLEAR	7'-0"	3'-0"	1 3/4"	F1	HM	PT-5	HW 9		
106	A	BIRCH VENEER	CLEAR	7'-0"	2'-6"	1 3/4"	F1	HM	PT-5	HW 5		
107	B	BIRCH VENEER	CLEAR	7'-0"	3'-0"	1 3/4"	F1	HM	PT-5	HW 3		
108	C	BIRCH VENEER	CLEAR	7'-0"	6'-0"	1 3/4"	F1	HM	PT-5	HW 6		
109	A	BIRCH VENEER	CLEAR	7'-0"	6'-0"	1 3/4"	F1	HM	PT-5	HW 6		
110	C	BIRCH VENEER	CLEAR	7'-0"	6'-0"	1 3/4"	F1	HM	PT-5	HW 6		



Window Schedule										
NUMBER	TYPE		WINDOW		GLAZING			FRAME		
	Width	Type	Head Height	Sill Height	Glazing Type	Glazing Thickness	Sill	Jamb 2	Finish	
1	24" x 60"	FIXED	2'-0"	3'-6"			4/AS501	5/AS501	6/AS501	ANOD. ALUM.



- ④ CASED OPENING JAMB DETAIL
3" = 1'-0"
- ③ CASED OPENING HEAD DETAIL
3" = 1'-0"
- ② JAMB DETAIL
3" = 1'-0"
- ① HEAD DETAIL
3" = 1'-0"

[illegible]

MEP Engineer
APOGEE CONSULTING GROUP
 1936 Chapel Hill Road,
 Suite 202
 Raleigh, NC 27607
 Tel: 303-783-0040

GUIDON DESIGN
905 N. CAPITOL AVE. Suite 109 NDANATOL 15 N. 6704
317 800 6388 WWW.GUIDONDESIGN.COM
SUSTAINABLE ARCHITECTURE + ENGINEERING



GRAND JUNCTION VAMC
DIETITICS - REPLACEMENT OF
REFRIGERATORS AND FREEZERS
Dept. of Veterans Affairs 2121 North Avenue
Grand Junction, CO 81501
100% CONSTRUCTION DOCUMENTS

DESIGNED: UJ	DRAWN: ARO
APP PROVED:	CHECKED: DA
CLIENT PROJECT NUMBER 575-14-100	
PROJECT NUMBER 13.1069	
DATE	

EQUIP PLAN &
SCHEDULES

AS601

WAYFINDING SCHEDULE					ROOM FINISH SCHEDULE					ROOM FINISH SCHEDULE NOTES						
LOCATION	VASION TYPE	ROOM NUMBER	ROOM NAME	SIGN MESSAGE	COMMENTS	MOUNTING	NUMBER	NAME	FLOOR	BASE	NORTH	EAST	SOUTH	WEST	CEILING	NOTES
LEVEL 1		1239	FREEZER			WALL - FLAT	LEVEL 1	FREEZER	RT-1	PRE-FIN	PT-1	PT-1	PT-1	PT-1	PRE-FIN	1. PROVIDE HORIZONTAL COVER BLINDS (LVL AT ALL EXTERIOR WALLS) TO MATCH EXTERIOR FINISH. BLINDS TO BE SIZED TO COVER MILLION TO MILLION.
LEVEL 3		3215	STORAGE			WALL - FLAT	LEVEL 3	STOR	RT-1	PRE-FIN	PT-2	PT-2	PT-2	PT-2	ACT-1	2. IF CERAMIC TILE ON (E) COLUMN IN THE ELECTRICAL ROOM TO REMAIN.
3216	IN-04/04	3216	OFFICE			WALL - FLAT	3216	OFFICE	RT-1	PRE-FIN	PT-2	PT-2	PT-2	PT-2	ACT-1	3. ALL NEW WALLS IN KITCHEN AREA TO HAVE CERAMIC TILE ON CONCRETE BACKER BOARD FULL HEIGHT, TYP. MATCH COLOR OF ADJACENT TILE (CT ON CT-4).
3217	IN-04/01	3217	OFFICE			WALL - FLAT	3217	OFFICE	RT-1	PRE-FIN	PT-2	PT-2	PT-2	PT-2	ACT-1	4. PREFABRICATED UNIT
3218	IN-04/04	3218	ELECTRICAL			WALL - FLAT	3218	ELEC	RT-1	PRE-FIN	PT-2	PT-2	PT-2	PT-2	ACT-1	5. PROVIDE CURTAIN ROD & CURTAIN (F-1).
3219	IN-04/04	3219	DIVETICS			WALL - FLAT	3219	DIVETICS	RT-1	PRE-FIN	PT-2	PT-2	PT-2	PT-2	ACT-1	6. ALL NEW CASEWORK TO BE PLAIN FINISH, ALL NEW COUNTERTOPS TO BE SLD-2 FINISH.
3220	IN-04/04	3220	RECEPTION			WALL - FLAT	3220	RECEPTION	RT-1	PRE-FIN	PT-2	PT-2	PT-2	PT-2	ACT-1	7. ALL (E) OP. BD. CEILING TO BE RECEIVED EPOXY PAINT FINISH, COLOR AS SCHEDULED.
3221	IN-04/04	3221	WEIGHING			WALL - FLAT	3221	WEIGHING	RT-1	PRE-FIN	PT-2	PT-2	PT-2	PT-2	ACT-1	
3222	IN-04/04	3222	COUNSELOR			WALL - FLAT	3222	COUNSELOR	RT-1	PRE-FIN	PT-2	PT-2	PT-2	PT-2	ACT-1	
3223	IN-04/04	3223	CHIEF'S OFFICE			WALL - FLAT	3223	CHIEF'S OFFICE	RT-1	PRE-FIN	PT-2	PT-2	PT-2	PT-2	ACT-1	
3224	IN-04/04	3224	PAPER SUPPLY STORAGE			WALL - FLAT	3224	PAPER SUPPLY STORAGE	RT-1	PRE-FIN	PT-2	PT-2	PT-2	PT-2	ACT-1	
3225	IN-04/04	3225	SCHEDULER			WALL - FLAT	3225	SCHEDULER	RT-1	PRE-FIN	PT-2	PT-2	PT-2	PT-2	ACT-1	
3226	IN-04/01	3226	COUNSELOR			WALL - FLAT	3226	COUNSELOR	RT-1	PRE-FIN	PT-2	PT-2	PT-2	PT-2	ACT-1	
3227	IN-04/04	3227	WEIGHING			WALL - FLAT	3227	WEIGHING	RT-1	PRE-FIN	PT-2	PT-2	PT-2	PT-2	ACT-1	
3228	IN-04/04	3228	COUNSELOR			WALL - FLAT	3228	COUNSELOR	RT-1	PRE-FIN	PT-2	PT-2	PT-2	PT-2	ACT-1	
3229	IN-04/04	3229	CHIEF'S OFFICE			WALL - FLAT	3229	CHIEF'S OFFICE	RT-1	PRE-FIN	PT-2	PT-2	PT-2	PT-2	ACT-1	
3230	IN-04/04	3230	CHEMICAL STORAGE			WALL - FLAT	3230	CHEMICAL STORAGE	RT-1	PRE-FIN	PT-2	PT-2	PT-2	PT-2	ACT-1	
3231	IN-04/04	3231	PAPER STORAGE			WALL - FLAT	3231	PAPER STORAGE	RT-1	PRE-FIN	PT-2	PT-2	PT-2	PT-2	ACT-1	
3232	IN-04/04	3232	FREEZER			WALL - FLAT	3232	FREEZER	RT-1	PRE-FIN	PT-2	PT-2	PT-2	PT-2	ACT-1	
3233	IN-04/04	3233	PRODUCE REFRIGERATOR			WALL - FLAT	3233	PRODUCE REFRIGERATOR	RT-1	PRE-FIN	PT-2	PT-2	PT-2	PT-2	ACT-1	
3234	IN-04/04	3234	PAPER SUPPLY STORAGE			WALL - FLAT	3234	PAPER SUPPLY STORAGE	RT-1	PRE-FIN	PT-2	PT-2	PT-2	PT-2	ACT-1	
3235	IN-04/04	3235	CHIEF'S OFFICE			WALL - FLAT	3235	CHIEF'S OFFICE	RT-1	PRE-FIN	PT-2	PT-2	PT-2	PT-2	ACT-1	
3236	IN-04/04	3236	COUNSELOR			WALL - FLAT	3236	COUNSELOR	RT-1	PRE-FIN	PT-2	PT-2	PT-2	PT-2	ACT-1	
3237	IN-04/04	3237	WEIGHING			WALL - FLAT	3237	WEIGHING	RT-1	PRE-FIN	PT-2	PT-2	PT-2	PT-2	ACT-1	
3238	IN-04/04	3238	COUNSELOR			WALL - FLAT	3238	COUNSELOR	RT-1	PRE-FIN	PT-2	PT-2	PT-2	PT-2	ACT-1	
3239	IN-04/04	3239	CHIEF'S OFFICE			WALL - FLAT	3239	CHIEF'S OFFICE	RT-1	PRE-FIN	PT-2	PT-2	PT-2	PT-2	ACT-1	
3240	IN-04/04	3240	CHEMICAL STORAGE			WALL - FLAT	3240	CHEMICAL STORAGE	RT-1	PRE-FIN	PT-2	PT-2	PT-2	PT-2	ACT-1	
3241	IN-04/04	3241	PAPER STORAGE			WALL - FLAT	3241	PAPER STORAGE	RT-1	PRE-FIN	PT-2	PT-2	PT-2	PT-2	ACT-1	
3242	IN-04/04	3242	FREEZER			WALL - FLAT	3242	FREEZER	RT-1	PRE-FIN	PT-2	PT-2	PT-2	PT-2	ACT-1	
3243	IN-04/04	3243	PRODUCE REFRIGERATOR			WALL - FLAT	3243	PRODUCE REFRIGERATOR	RT-1	PRE-FIN	PT-2	PT-2	PT-2	PT-2	ACT-1	
3244	IN-04/04	3244	PAPER SUPPLY STORAGE			WALL - FLAT	3244	PAPER SUPPLY STORAGE	RT-1	PRE-FIN	PT-2	PT-2	PT-2	PT-2	ACT-1	
3245	IN-04/04	3245	CHIEF'S OFFICE			WALL - FLAT	3245	CHIEF'S OFFICE	RT-1	PRE-FIN	PT-2	PT-2	PT-2	PT-2	ACT-1	
3246	IN-04/04	3246	COUNSELOR			WALL - FLAT	3246	COUNSELOR	RT-1	PRE-FIN	PT-2	PT-2	PT-2	PT-2	ACT-1	
3247	IN-04/04	3247	WEIGHING			WALL - FLAT	3247	WEIGHING	RT-1	PRE-FIN	PT-2	PT-2	PT-2	PT-2	ACT-1	
3248	IN-04/04	3248	COUNSELOR			WALL - FLAT	3248	COUNSELOR	RT-1	PRE-FIN	PT-2	PT-2	PT-2	PT-2	ACT-1	
3249	IN-04/04	3249	CHIEF'S OFFICE			WALL - FLAT	3249	CHIEF'S OFFICE	RT-1	PRE-FIN	PT-2	PT-2	PT-2	PT-2	ACT-1	
3250	IN-04/04	3250	CHEMICAL STORAGE			WALL - FLAT	3250	CHEMICAL STORAGE	RT-1	PRE-FIN	PT-2	PT-2	PT-2	PT-2	ACT-1	
3251	IN-04/04	3251	PAPER STORAGE			WALL - FLAT	3251	PAPER STORAGE	RT-1	PRE-FIN	PT-2	PT-2	PT-2	PT-2	ACT-1	
3252	IN-04/04	3252	FREEZER			WALL - FLAT	3252	FREEZER	RT-1	PRE-FIN	PT-2	PT-2	PT-2	PT-2	ACT-1	
3253	IN-04/04	3253	PRODUCE REFRIGERATOR			WALL - FLAT	3253	PRODUCE REFRIGERATOR	RT-1	PRE-FIN	PT-2	PT-2	PT-2	PT-2	ACT-1	
3254	IN-04/04	3254	PAPER SUPPLY STORAGE			WALL - FLAT	3254	PAPER SUPPLY STORAGE	RT-1	PRE-FIN	PT-2	PT-2	PT-2	PT-2	ACT-1	
3255	IN-04/04	3255	CHIEF'S OFFICE			WALL - FLAT	3255	CHIEF'S OFFICE	RT-1	PRE-FIN	PT-2	PT-2	PT-2	PT-2	ACT-1	
3256	IN-04/04	3256	COUNSELOR			WALL - FLAT	3256	COUNSELOR	RT-1	PRE-FIN	PT-2	PT-2	PT-2	PT-2	ACT-1	
3257	IN-04/04	3257	WEIGHING			WALL - FLAT	3257	WEIGHING	RT-1	PRE-FIN	PT-2	PT-2	PT-2	PT-2	ACT-1	
3258	IN-04/04	3258	COUNSELOR			WALL - FLAT	3258	COUNSELOR	RT-1	PRE-FIN	PT-2	PT-2	PT-2	PT-2	ACT-1	
3259	IN-04/04	3259	CHIEF'S OFFICE			WALL - FLAT	3259	CHIEF'S OFFICE	RT-1	PRE-FIN	PT-2	PT-2	PT-2	PT-2	ACT-1	
3260	IN-04/04	3260	CHEMICAL STORAGE			WALL - FLAT	3260	CHEMICAL STORAGE	RT-1	PRE-FIN	PT-2	PT-2	PT-2	PT-2	ACT-1	
3261	IN-04/04	3261	PAPER STORAGE			WALL - FLAT	3261	PAPER STORAGE	RT-1	PRE-FIN	PT-2	PT-2	PT-2	PT-2	ACT-1	
3262	IN-04/04	3262	FREEZER			WALL - FLAT	3262	FREEZER	RT-1	PRE-FIN	PT-2	PT-2	PT-2	PT-2	ACT-1	
3263	IN-04/04	3263	PRODUCE REFRIGERATOR			WALL - FLAT	3263	PRODUCE REFRIGERATOR	RT-1	PRE-FIN	PT-2	PT-2	PT-2	PT-2	ACT-1	
3264	IN-04/04	3264	PAPER SUPPLY STORAGE			WALL - FLAT	3264	PAPER SUPPLY STORAGE	RT-1	PRE-FIN	PT-2	PT-2	PT-2	PT-2	ACT-1	
3265	IN-04/04	3265	CHIEF'S OFFICE			WALL - FLAT	3265	CHIEF'S OFFICE	RT-1	PRE-FIN	PT-2	PT-2	PT-2	PT-2	ACT-1	
3266	IN-04/04	3266	COUNSELOR			WALL - FLAT	3266	COUNSELOR	RT-1	PRE-FIN	PT-2	PT-2	PT-2	PT-2	ACT-1	
3267	IN-04/04	3267	WEIGHING			WALL - FLAT	3267	WEIGHING	RT-1	PRE-FIN	PT-2	PT-2	PT-2	PT-2	ACT-1	
3268	IN-04/04	3268	COUNSELOR			WALL - FLAT	3268	COUNSELOR	RT-1	PRE-FIN	PT-2	PT-2	PT-2	PT-2	ACT-1	
3269	IN-04/04	3269	CHIEF'S OFFICE			WALL - FLAT	3269	CHIEF'S OFFICE	RT-1	PRE-FIN	PT-2	PT-2	PT-2	PT-2	ACT-1	
3270	IN-04/04	3270	CHEMICAL STORAGE			WALL - FLAT	3270	CHEMICAL STORAGE	RT-1	PRE-FIN	PT-2	PT-2	PT-2	PT-2	ACT-1	
3271	IN-04/04	3271	PAPER STORAGE			WALL - FLAT	3271	PAPER STORAGE	RT-1	PRE-FIN	PT-2	PT-2	PT-2	PT-2	ACT-1	
3272	IN-04/04	3272	FREEZER			WALL - FLAT	3272	FREEZER	RT-1	PRE-FIN	PT-2	PT-2	PT-2	PT-2	ACT-1	
3273	IN-04/04	3273	PRODUCE REFRIGERATOR			WALL - FLAT	3273	PRODUCE REFRIGERATOR	RT-1	PRE-FIN	PT-2	PT-2	PT-2	PT-2	ACT-1	
3274	IN-04/04	3274	PAPER SUPPLY STORAGE			WALL - FLAT	3274	PAPER SUPPLY STORAGE	RT-1	PRE-FIN	PT-2	PT-2	PT-2	PT-2	ACT-1	
3275	IN-04/04	3275	CHIEF'S OFFICE			WALL - FLAT	3275	CHIEF'S OFFICE	RT-1	PRE-FIN	PT-2	PT-2	PT-2	PT-2	ACT-1	
3276	IN-04/04	3276	COUNSELOR			WALL - FLAT	3276	COUNSELOR	RT-1	PRE-FIN	PT-2	PT-2	PT-2	PT-2	ACT-1	
3277	IN-04/04	3277	WEIGHING			WALL - FLAT	3277	WEIGHING	RT-1	PRE-FIN	PT-2	PT-2	PT-2	PT-2	ACT-1	
3278	IN-04/04	3278	COUNSELOR			WALL - FLAT	3278	COUNSELOR	RT-1	PRE-FIN	PT-2	PT-2	PT-2	PT-2	ACT-1	
3279	IN-04/04	3279	CHIEF'S OFFICE			WALL - FLAT	3279	CHIEF'S OFFICE	RT-1	PRE-FIN	PT-2	PT-2	PT-2	PT-2	ACT-1	
3280	IN-04/04	3280	CHEMICAL STORAGE			WALL - FLAT	3280	CHEMICAL STORAGE	RT-1	PRE-FIN	PT-2	PT-2	PT-2	PT-2	ACT-1	
3281	IN-04/04	3281	PAPER STORAGE			WALL - FLAT	3281	PAPER STORAGE	RT-1	PRE-FIN	PT-2	PT-2	PT-2	PT-2	ACT-1	
3282	IN-04/04	3282	FREEZER			WALL - FLAT	3282	FREEZER	RT-1	PRE-FIN	PT-2	PT-2	PT-2	PT-2	ACT-1	
3283	IN-04/04	3283	PRODUCE REFRIGERATOR			WALL - FLAT	3283	PRODUCE REFRIGERATOR	RT-1	PRE-FIN	PT-2	PT-2	PT-2	PT-2	ACT-1	
3284	IN-04/04	3284	PAPER SUPPLY STORAGE			WALL - FLAT	3284	PAPER SUPPLY STORAGE	RT-1	PRE-FIN	PT-2	PT-2	PT-2	PT-2	ACT-1	
3285	IN-04/04	3285	CHIEF'S OFFICE			WALL - FLAT	3285	CHIEF'S OFFICE	RT-1	PRE-FIN	PT-2	PT-2	PT-2	PT-2	ACT-1	
3286	IN-04/04	3286	COUNSELOR			WALL - FLAT	3286	COUNSELOR	RT-1	PRE-FIN	PT-2	PT-2	PT-2	PT-2	ACT-1	
3287	IN-04/04	3287	WEIGHING			WALL - FLAT	3287	WEIGHING	RT-1	PRE-FIN	PT-2	PT-2	PT-2	PT-2	ACT-1	
3288	IN-04/04	3288	COUNSELOR			WALL - FLAT	3288	COUNSELOR	RT-1	PRE-FIN	PT-2	PT-2	PT-2	PT-2	ACT-1	
3289	IN-04/04	3289	CHIEF'S OFFICE			WALL - FLAT	3289	CHIEF'S OFFICE	RT-1	PRE-FIN	PT-2	PT-2	PT-2	PT-2	ACT-1	
3290	IN-04/04	3290	CHEMICAL STORAGE			WALL - FLAT	3290	CHEMICAL STORAGE	RT-1	PRE-FIN	PT-2	PT-2	PT-2	PT-2	ACT-1	
3291	IN-04/04	3291	PAPER STORAGE			WALL - FLAT	3291	PAPER STORAGE	RT-1	PRE-FIN	PT-2	PT-2	PT-2	PT-2	ACT-1	
3292	IN-04/04	3292	FREEZER			WALL - FLAT	3292	FREEZER	RT-1	PRE-FIN	PT-2	PT-2	PT-2	PT-2	ACT-1	
3293	IN-04/04	3293	PRODUCE REFRIGERATOR			WALL - FLAT	3293	PRODUCE REFRIGERATOR	RT-1	PRE-FIN	PT-2	PT-2	PT-2	PT-2	ACT-1	
3294	IN-04/04	3294	PAPER SUPPLY STORAGE			WALL - FLAT	3294	PAPER SUPPLY STORAGE	RT-1	PRE-FIN	PT-2	PT-2	PT-2	PT-2	ACT-1	
3295	IN-04/04	3295	CHIEF'S OFFICE			WALL - FLAT	3295	CHIEF'S OFFICE	RT-1	PRE-FIN	PT-2	PT-2	PT-2	PT-2	ACT-1	
3296	IN-04/04	3296	COUNSELOR			WALL - FLAT	3296	COUNSELOR	RT-1	PRE-FIN	PT-2	PT-2	PT-2	PT-2	ACT-1	
3297	IN-04/04	3297	WEIGHING			WALL - FLAT	3297	WEIGHING	RT-1	PRE-FIN	PT-2	PT-2	PT-2	PT-2	ACT-1	
3298	IN-04/04	3298	COUNSELOR			WALL - FLAT	3298	COUNSELOR	RT-1	PRE-FIN						