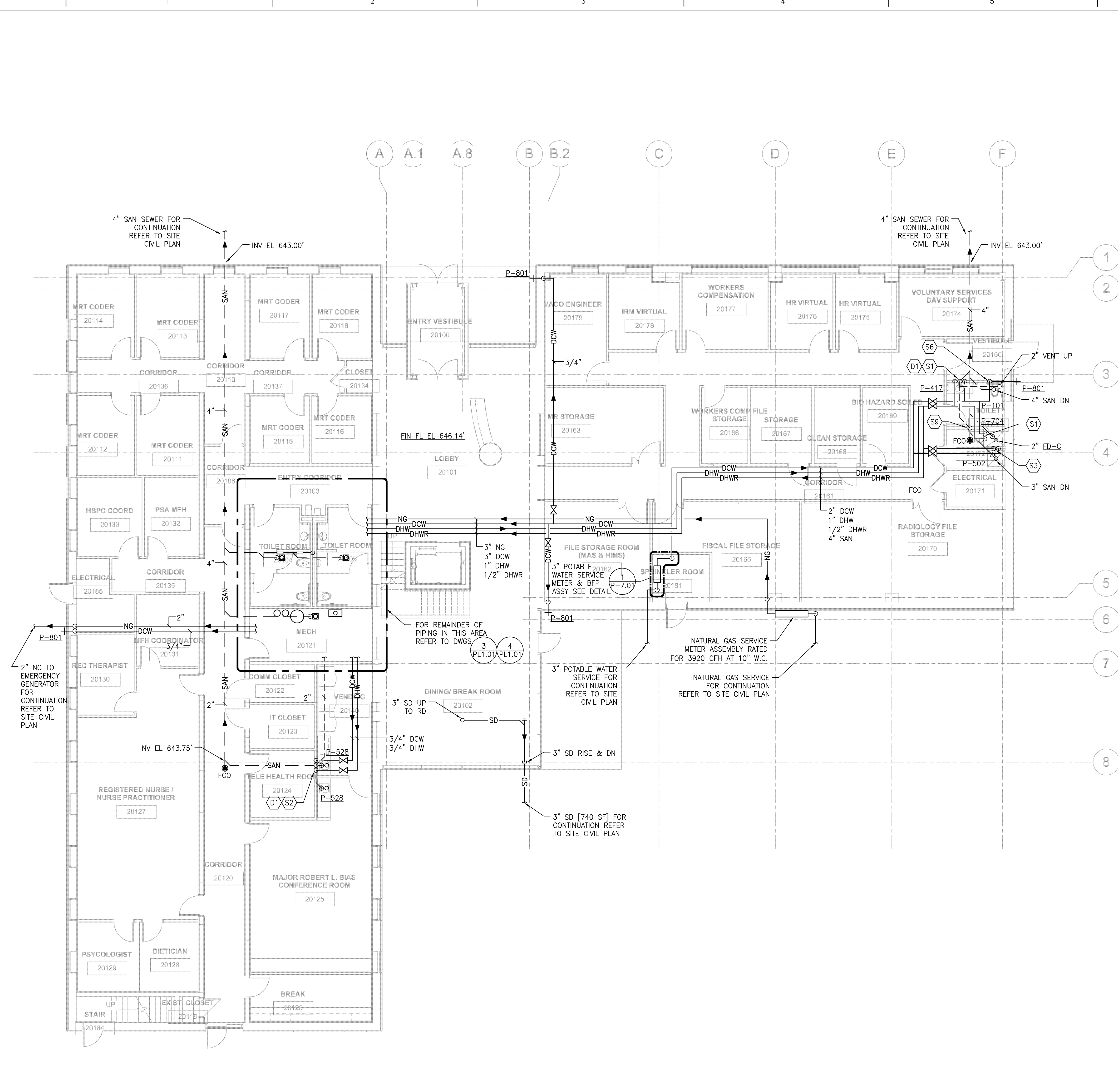
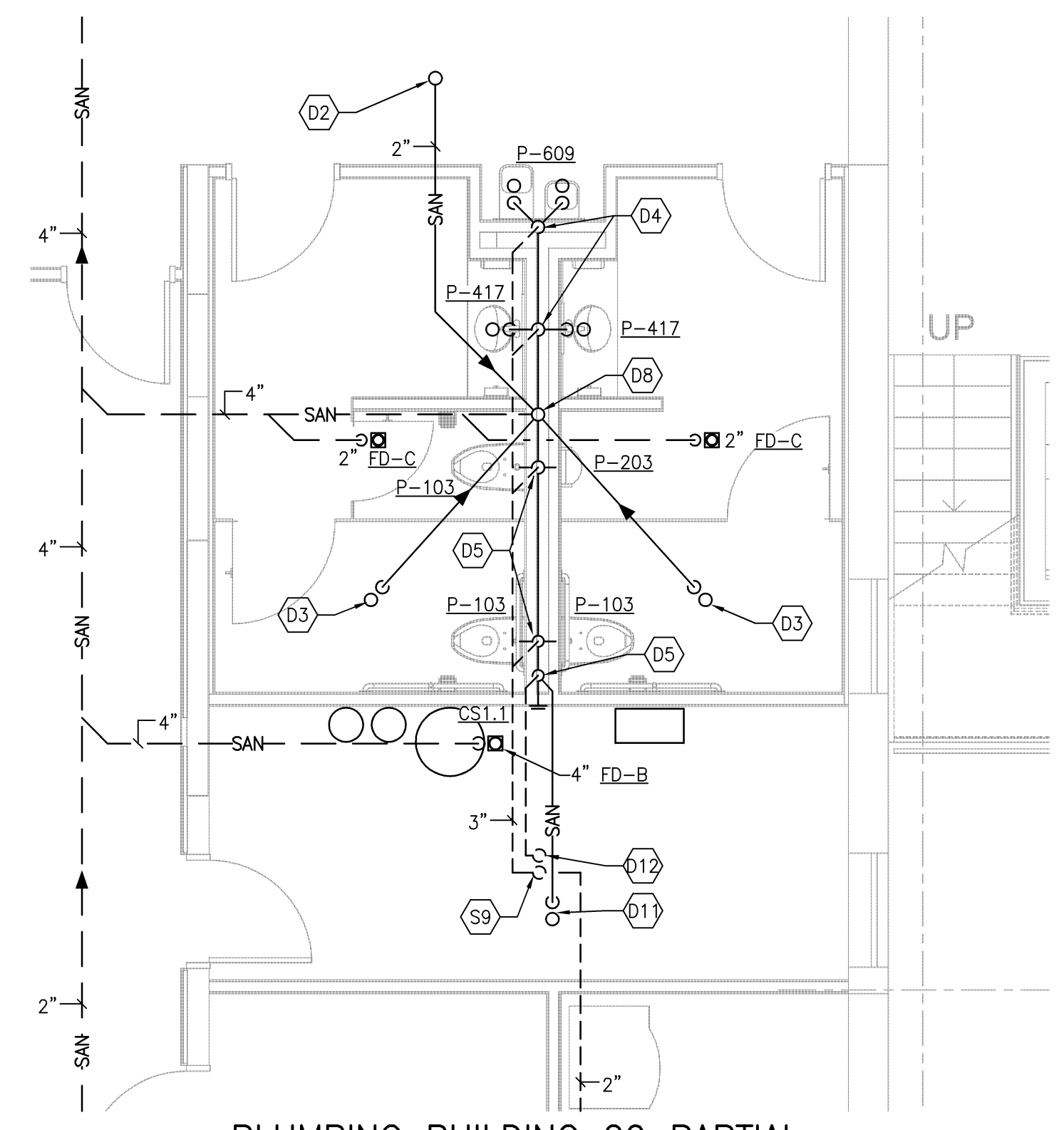


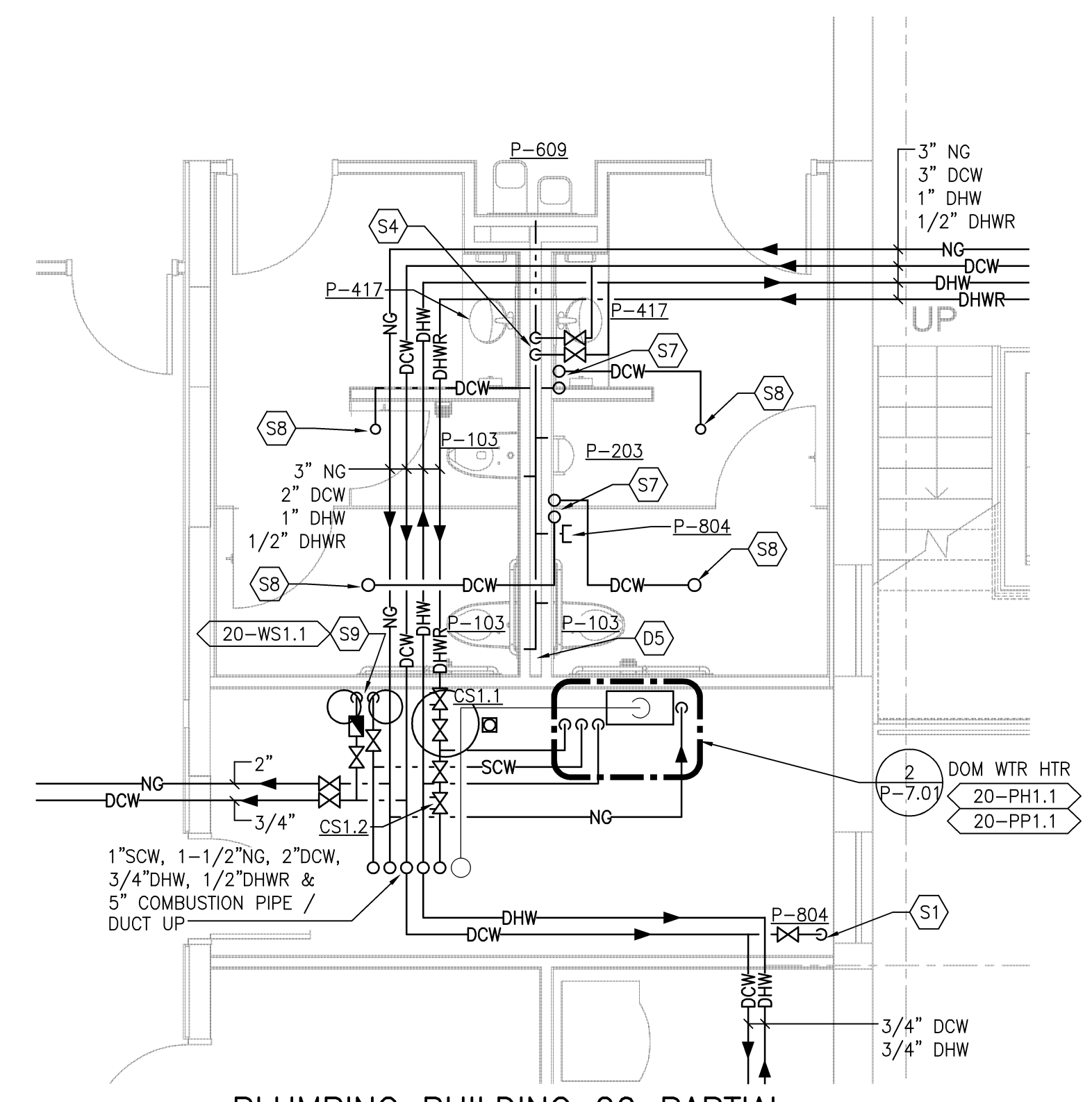
three inches = one foot
one and one-half inches = one foot
one inch = one foot
three-quarters inch = one foot
one-half inch = one foot
one-quarter inch = one foot
three-eighths inch = one foot
one-eighth inch = one foot



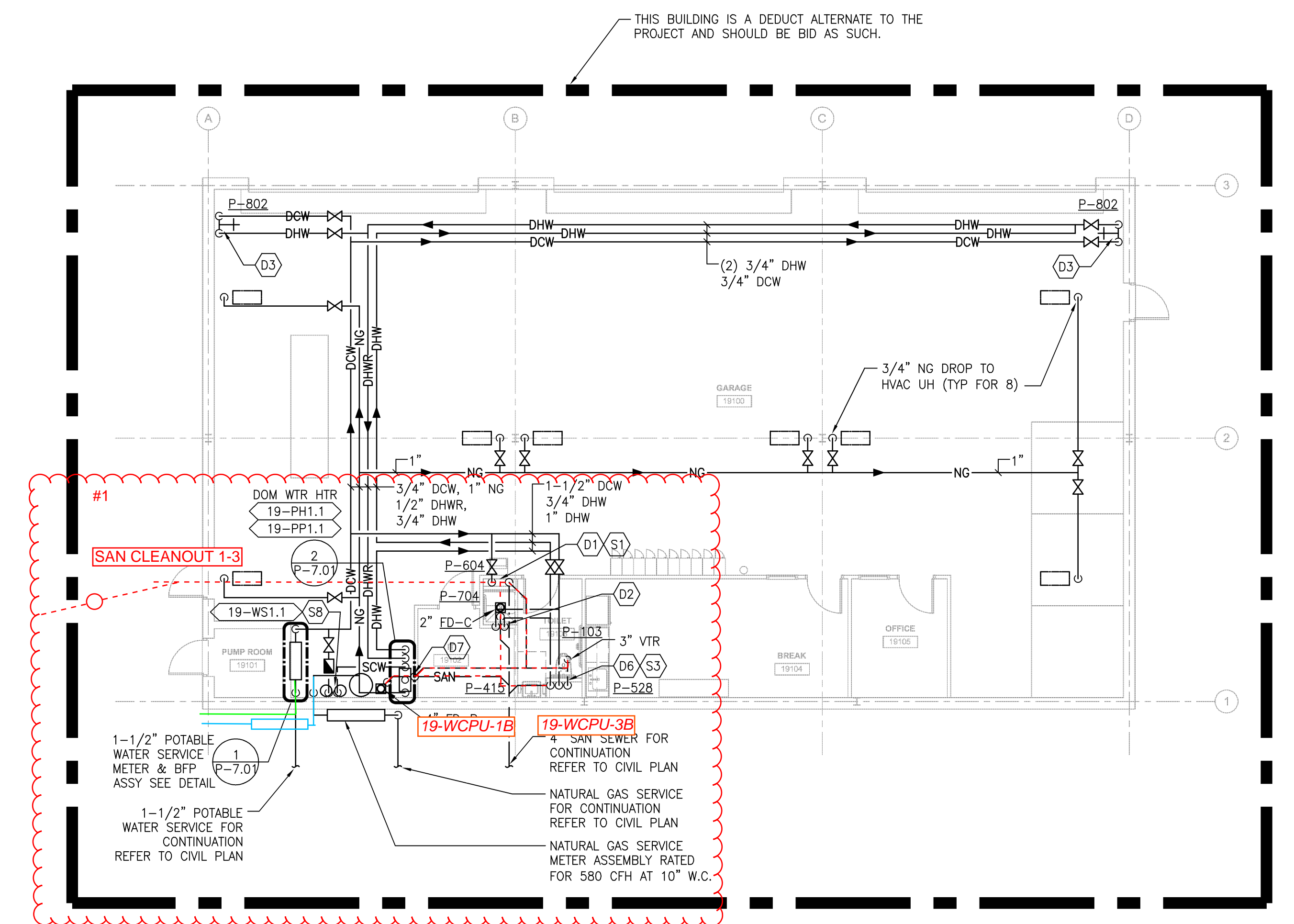
2 PLUMBING BUILDING 20 1ST FLOOR PLAN
SCALE: 1/8" = 1'-0"



3 PLUMBING BUILDING 20 PARTIAL
SANITARY DRAINAGE PLAN
SCALE: 1/4" = 1'-0"



4 PLUMBING BUILDING 20 PARTIAL
DOMESTIC WATER PLAN
SCALE: 1/4" = 1'-0"



1 PLUMBING BUILDING 19 1ST FLOOR PLAN
SCALE: 1/8" = 1'-0"

SHEET KEYNOTES:

- | | | | |
|---------------------------------------|-----------------------|-------------------------------|--|
| D1 2" SAN DN & 2" VENT RISE | D7 2" VENT RISE & DN | S1 1/2" DCW DROP | S7 (2) 1/2" DCW UP TO TP-2, REFER TO DETAIL 9/PL7.01 |
| D2 2" SAN UP | D8 4" SAN UP & DN | S2 1/2" DCW & 1/2" DHW DROP | S8 1/2" DCW TO FD TRAP FROM TP-2 |
| D3 2" SAN UP TO FD | D9 3" VENT UP | S3 3/4" DCW & 3/4" DHW DROP | S9 1" DCW & 1" SCW DROP TO WATER SOFTENER |
| D4 1-1/2" SAN DROP & 1-1/2" VENT RISE | D10 2" VENT RISE & DN | S4 1-1/2" DCW & 1/2" DHW DROP | |
| D5 4" SAN DROP & 2" VENT RISE | D11 4" SAN UP TO FD | S5 2" DCW & 1/2" DHW DROP | |
| D6 4" SAN DN & 2" VENT RISE | | S6 1-1/2" DCW DROP | |

GENERAL SHEET NOTES:

- SEE DWG. P-0.01 FOR GENERAL NOTES, SYMBOLS AND ABBREVIATIONS.
- SEE DWG. P-6.01 FOR PLUMBING SYSTEM PIPING RISER DIAGRAMS.
- SEE DWG. P-7.01 FOR PLUMBING DETAILS AND SCHEDULES.

#1 SKETCH OF REVISED UTILITY LAYOUTS DEPICTED FOR REFERENCE ONLY. EXACT LOCATIONS SHALL BE VERIFIED IN THE FIELD.	MILLER-REMICK CORPORATION PROFESSIONAL ENGINEER		PF&A ARCHITECTURE, PLANNING, INTERIORS World Trade Center 101 West Main Street, Suite 7000 Norfolk, VA 23510 Phone: 757-471-0537 Fax: 757-471-4205 www.pfa-architect.com	Drawing Title PLUMBING 1ST FLOOR PLAN		Project Title Renovations to the Former BRAC Property		Date 09.03.2013	
				Building No. 20		Project Architect: PF&A		Project No. 581-12-101	
				Location Huntington, WV		Checked by: GL		SHEET 102 OF 115	
						Drawn by: PD			

FINAL CD ISSUE
FULLY SPRINKLERED

