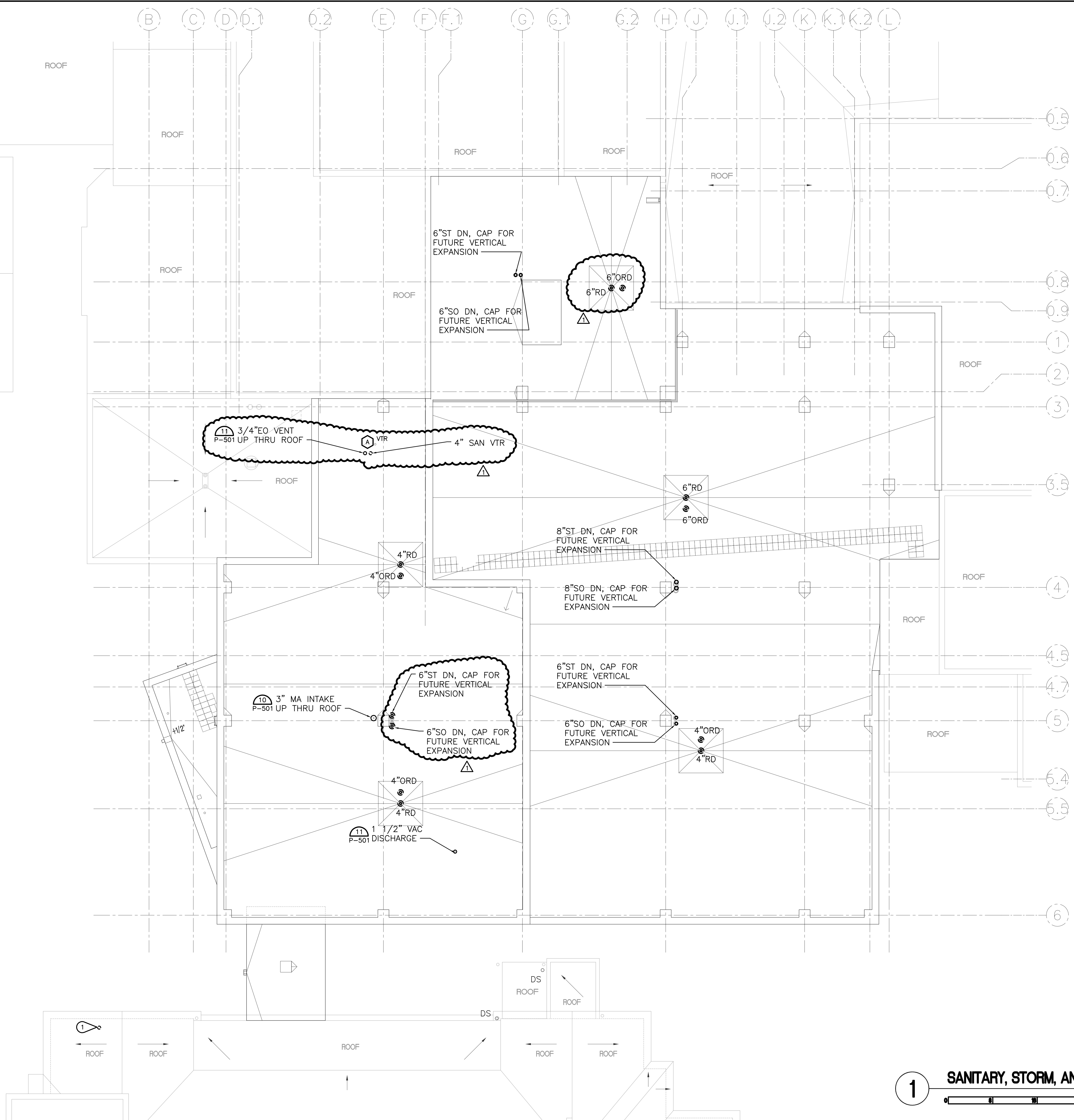


three inches = one foot
one and one half inches = one foot
one inch = one foot
three quarters inch = one foot
one half inch = one foot
three eighths inch = one foot
one quarter inch = one foot
one eighth inch = one foot
G:\2012\2401A\CAD\Plumbing\333_L636-121_PL331.dwg 2-26-15 04:06:03 PM BJK


PLUMBING KEYNOTES:

1 4" VENT THROUGH ROOF.



1 SANITARY, STORM, AND VENT ROOF PLAN (PHASE ONE AND TWO)

1/8"

CONSULTANTS:  FARRIS ENGINEERING OMAHA LINCOLN DES MOINES COLORADO SPRINGS farris-uso.com FE#124014		ARCHITECT/ENGINEERS:  Kenneth Hahn Architects 1343 South 75th Street Omaha, NE 68124-1610 402.391.2111 www.kharch.com AE Project # 171-001		Drawing Title SANITARY, STORM, AND VENT ROOF PLAN (PHASE ONE AND TWO) Approved Project Director		Project Title BUILD SUPPLY, PROCESSING AND DISTRIBUTION Location VAMC DES MOINES IOWA Date 5 DECEMBER 2014 Checked JMM Drawn MDB		Project Number 636-121 Building Number BUILDING 1W Drawing Number PL331 Dwg. 145 of 235		Office of Construction and Facilities Management  Department of Veterans Affairs	
Revisions #1 AMENDMENT 00003 03-02-15 Date											

VA FORM 08-6231