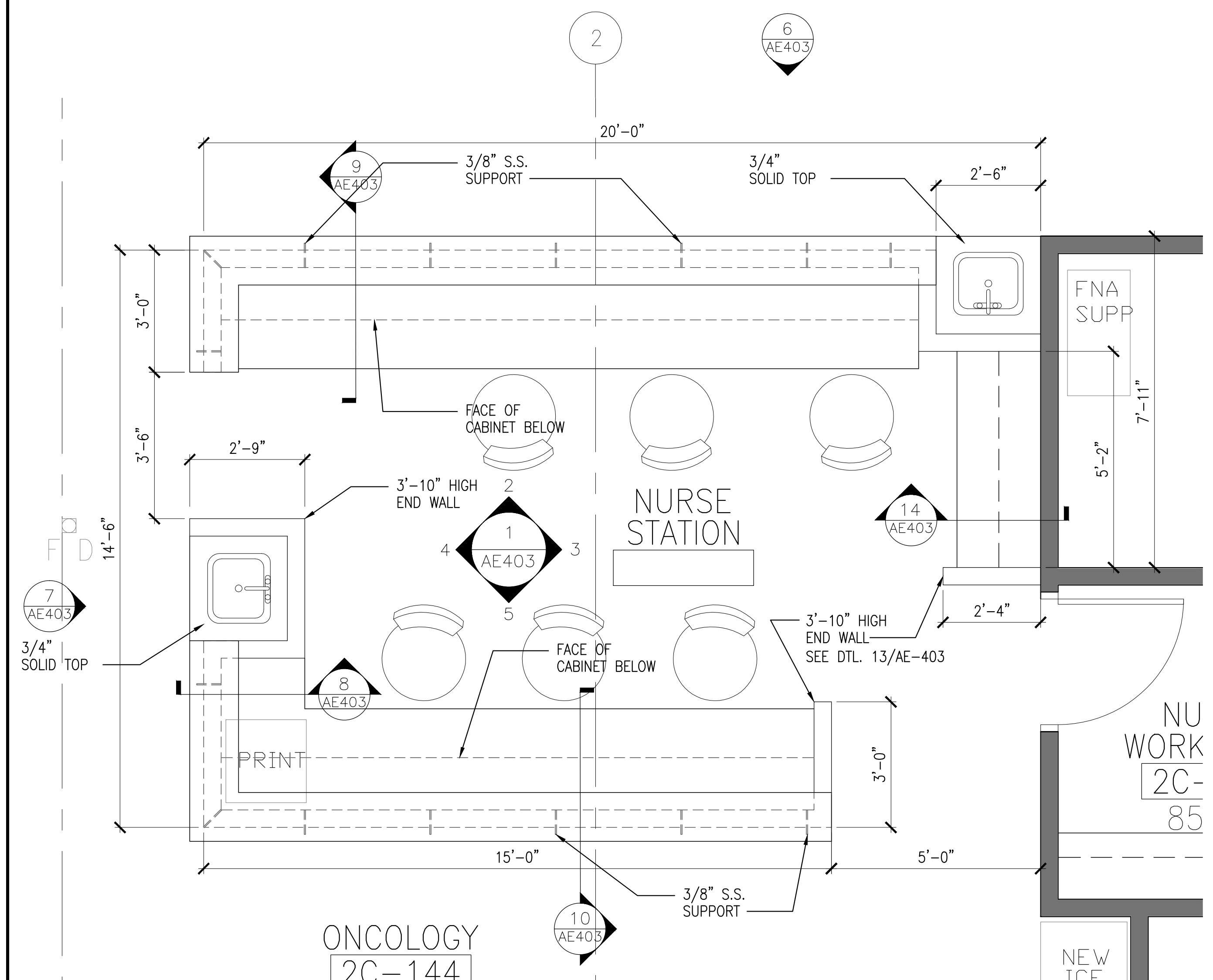
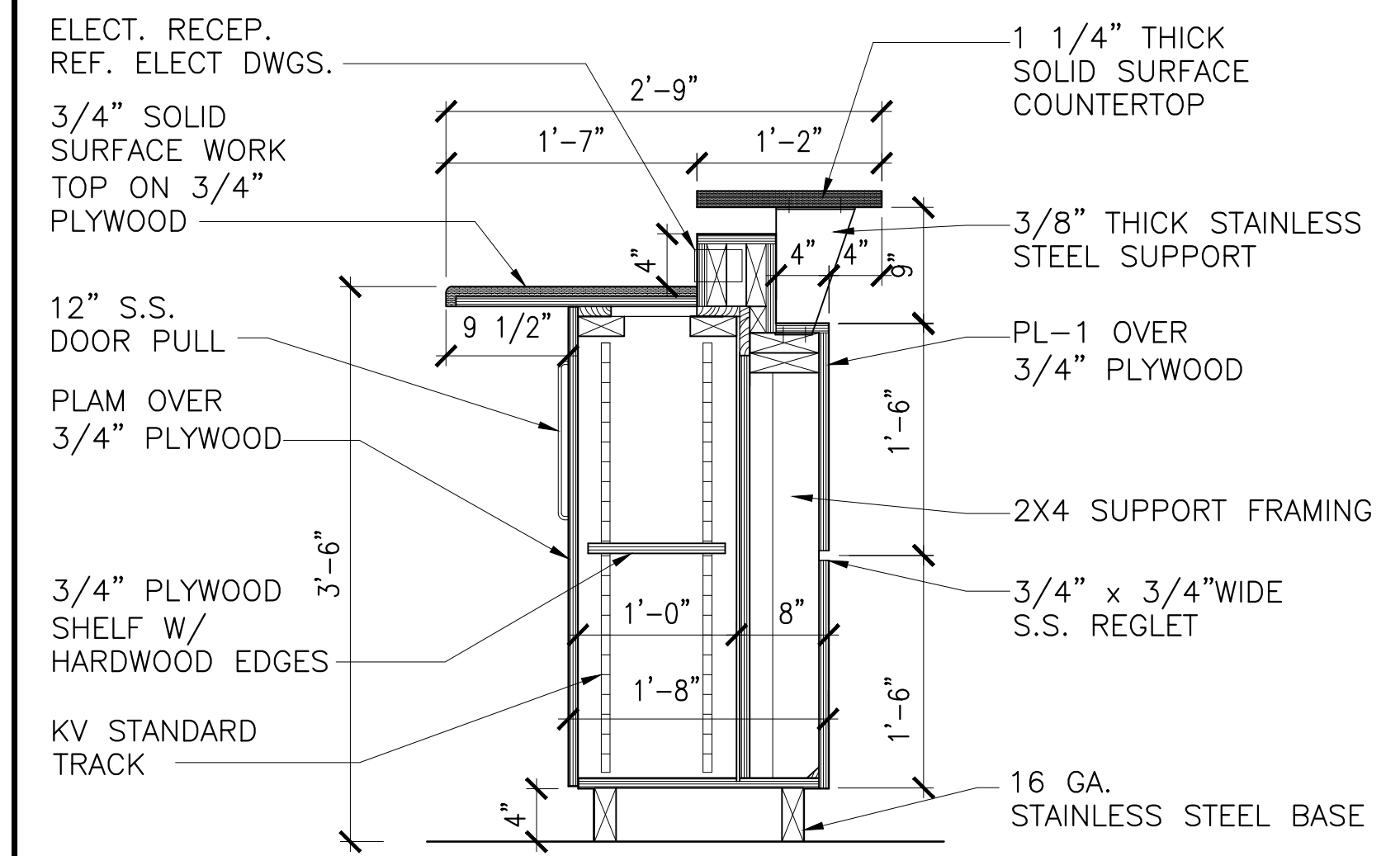


three inches = one foot
one and one half inches = one foot
one inch = one foot
three quarters inch = one foot
one half inch = one foot
three eighths inch = one foot
one quarter inch = one foot
one eighth inch = one foot

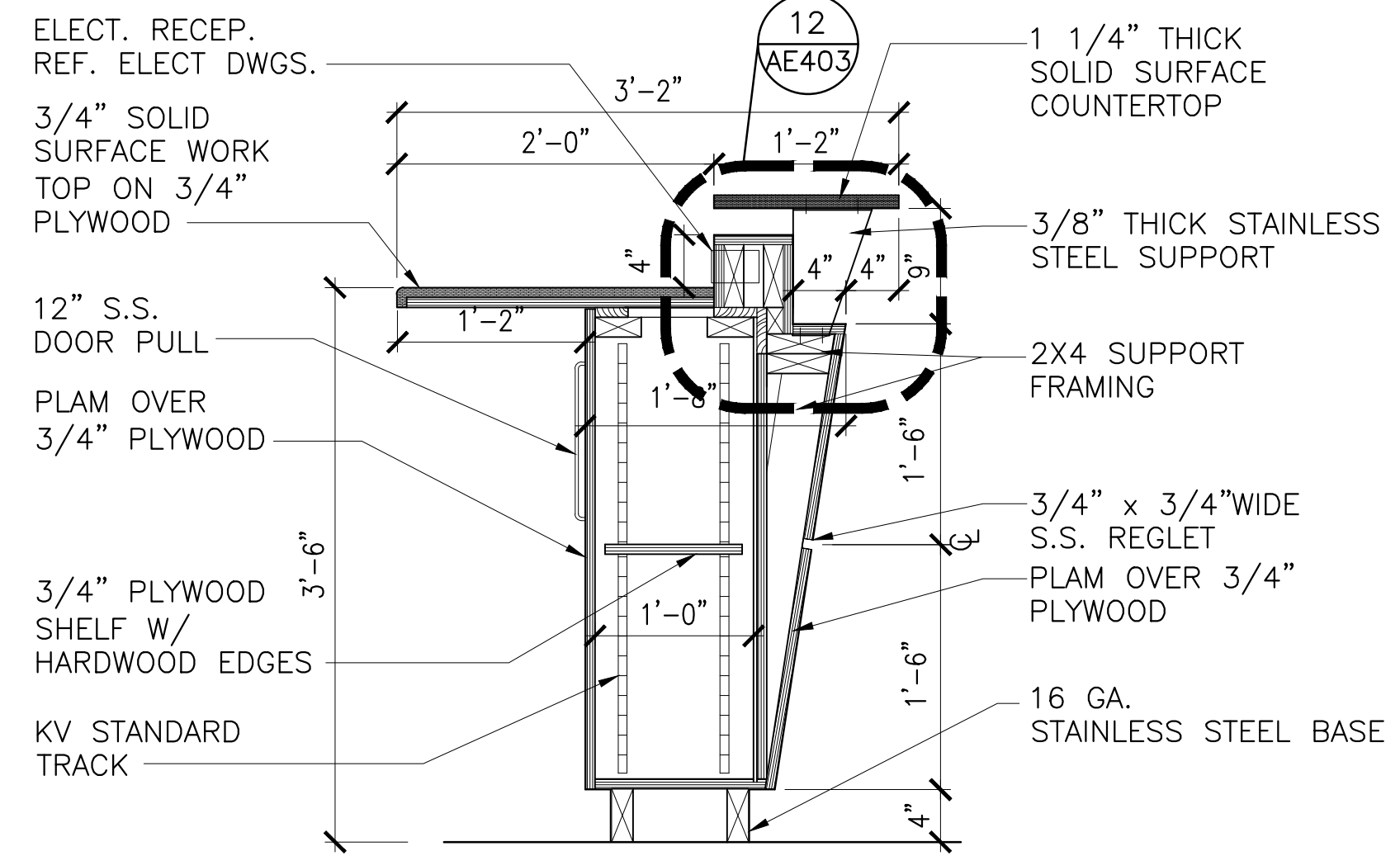


1 ENLARGED PLAN
NURSE'S STATION - INFUSION 2C-144
SCALE: 1/2"-1'-0"

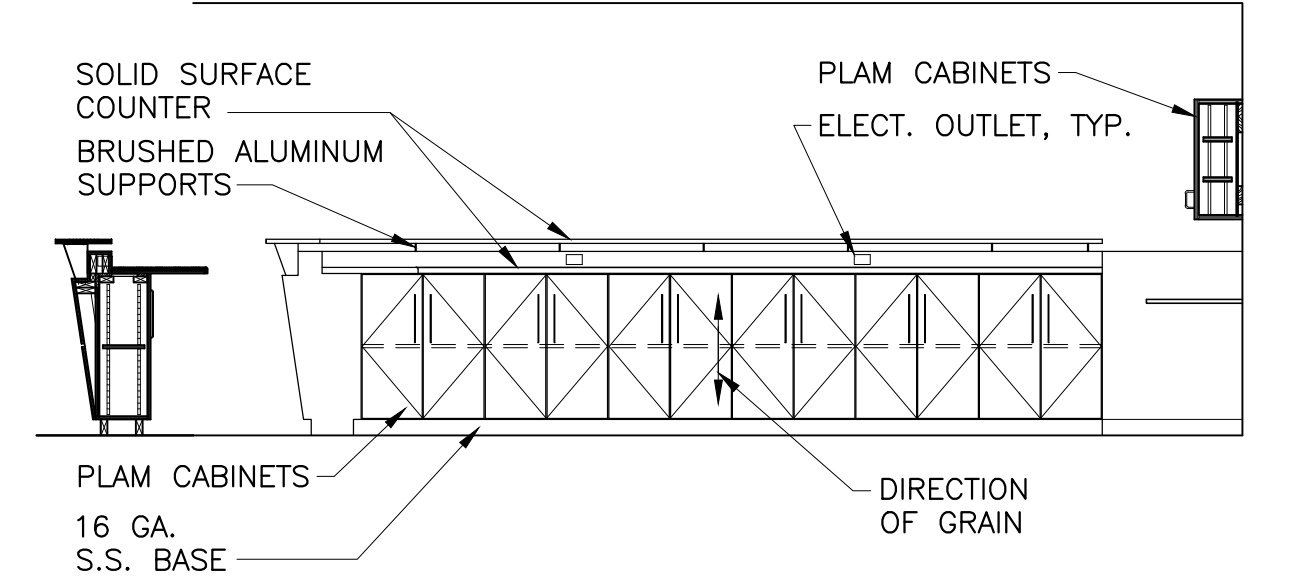


8 NURSES STATION DETAIL
SCALE: 1'-1'-0"

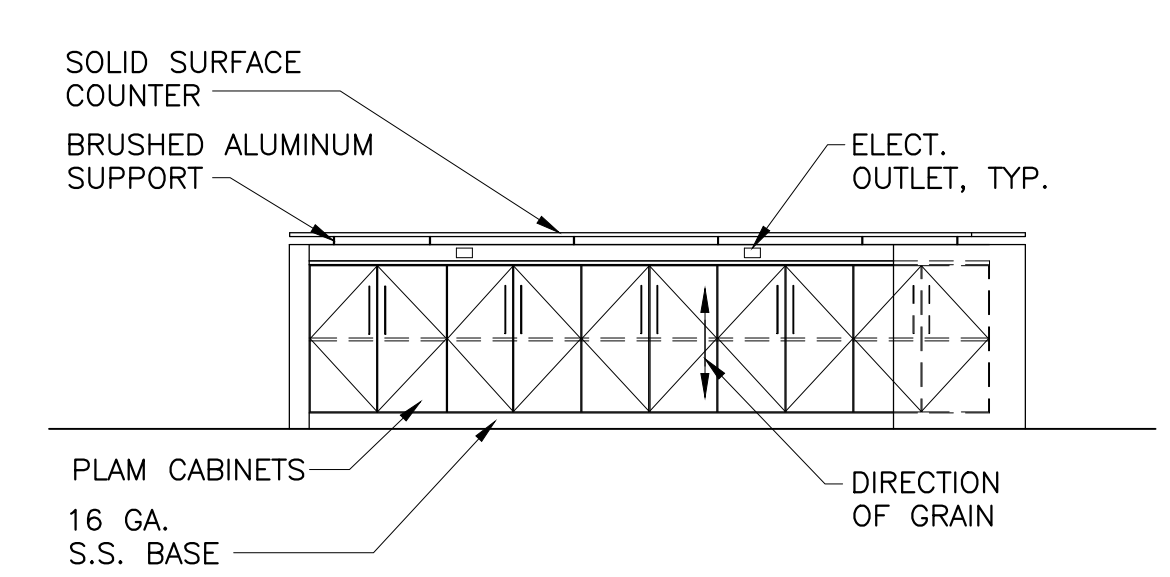
NOTE: INTERIOR OF ALL CABINETS TO BE PLASTIC LAMINATE FINISH



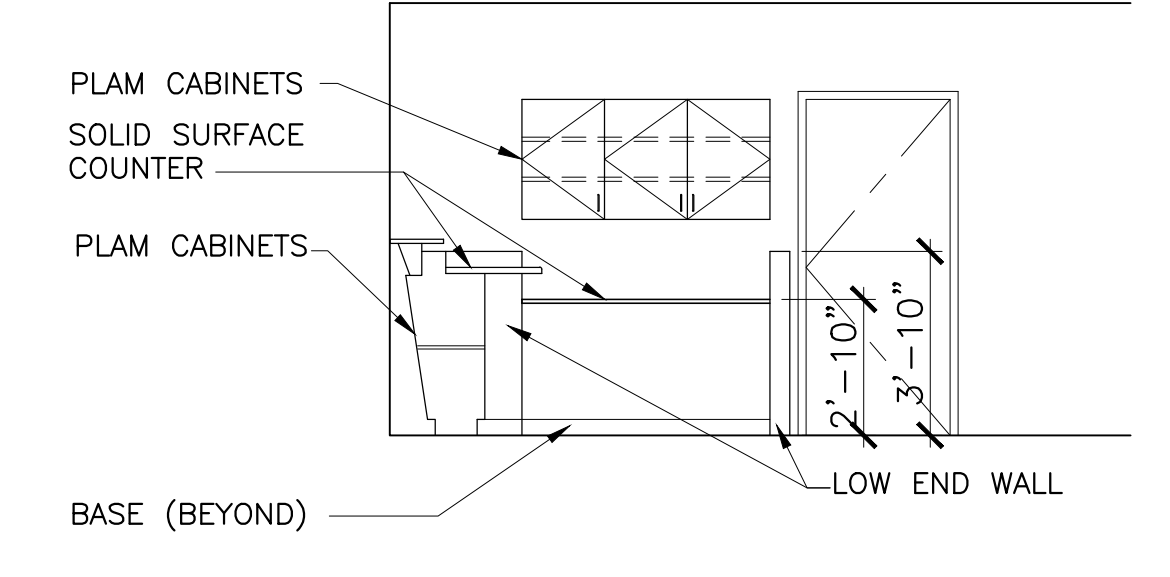
9 NURSES STATION DETAIL
SCALE: 1'-1'-0"



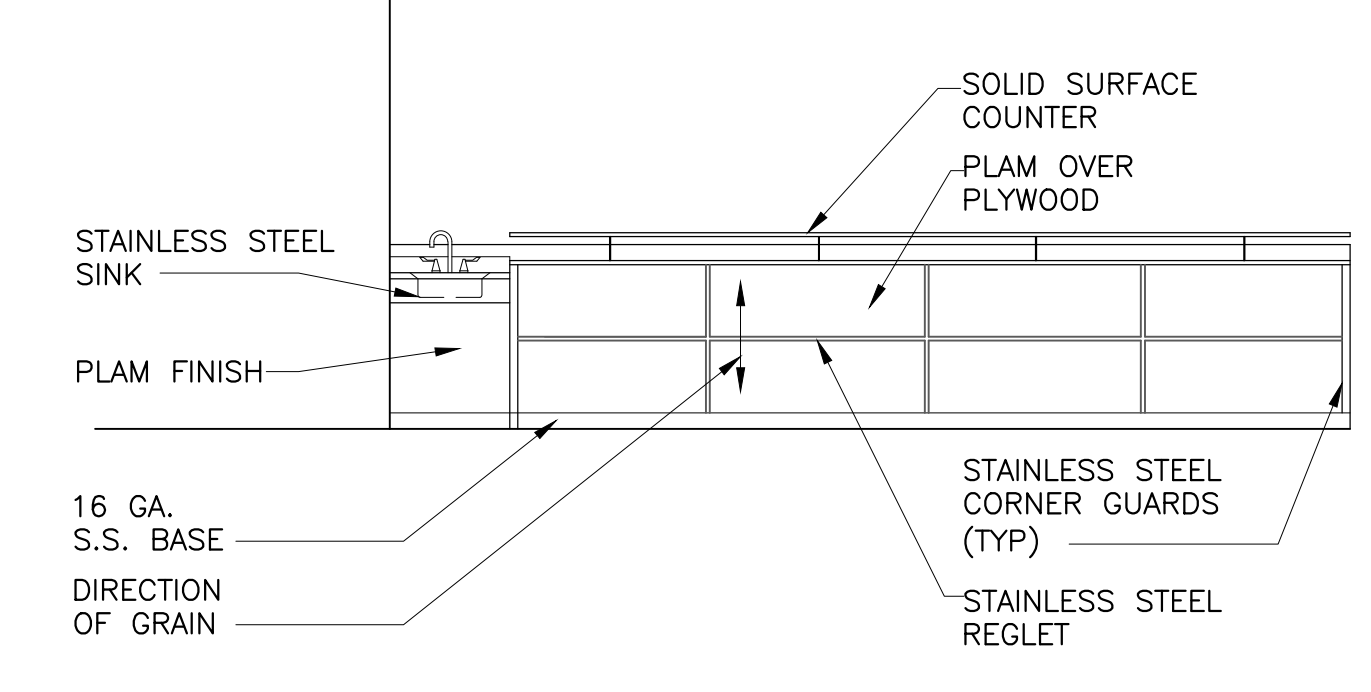
2 CASEWORK ELEVATION
NURSE'S STATION - INFUSION 2C-144
SCALE: 1/4"-1'-0"



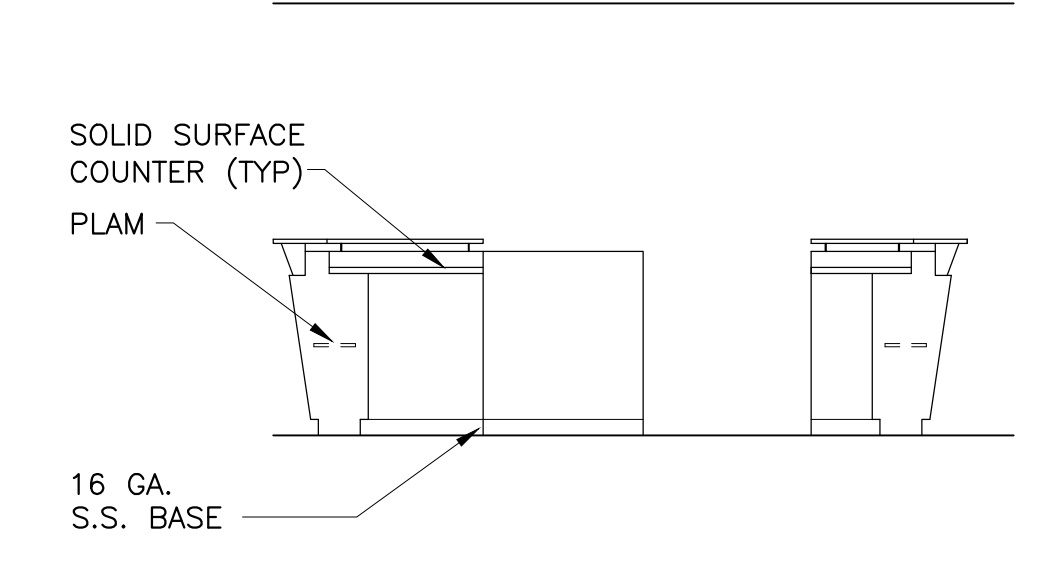
5 CASEWORK ELEVATION
NURSE'S STATION - INFUSION 2C-144
SCALE: 1/4"-1'-0"



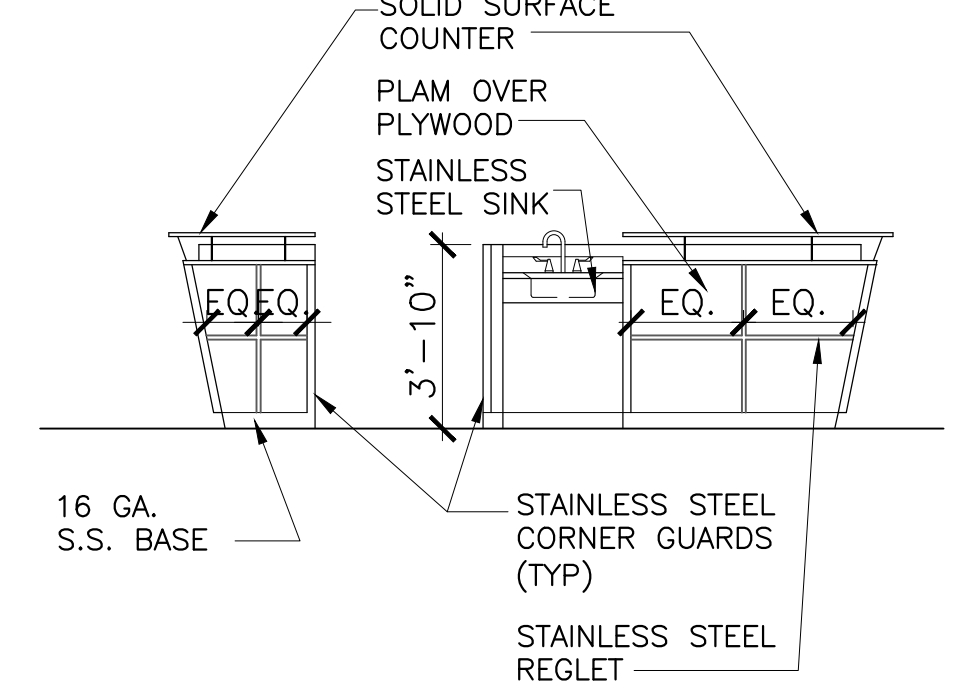
3 CASEWORK ELEVATION
NURSE'S STATION - INFUSION 2C-144
SCALE: 1/4"-1'-0"



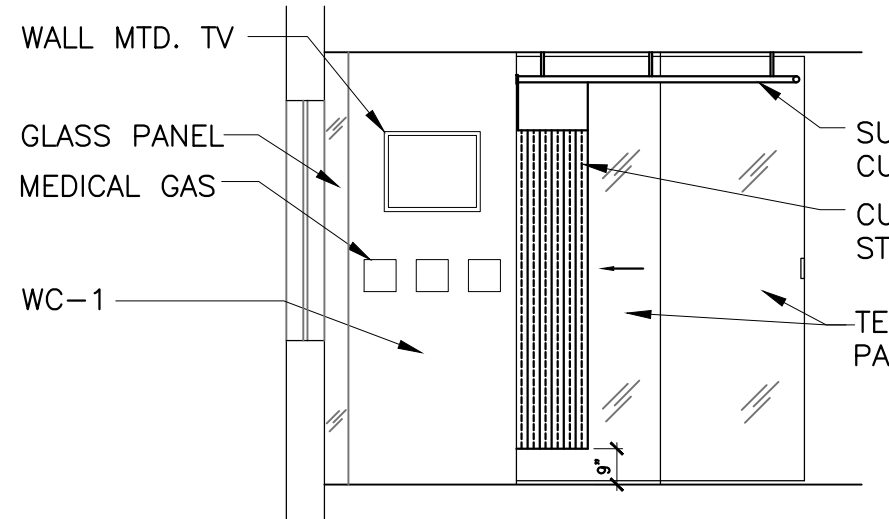
6 CASEWORK ELEVATION
NURSE'S STATION - INFUSION 2C-144
SCALE: 1/4"-1'-0"



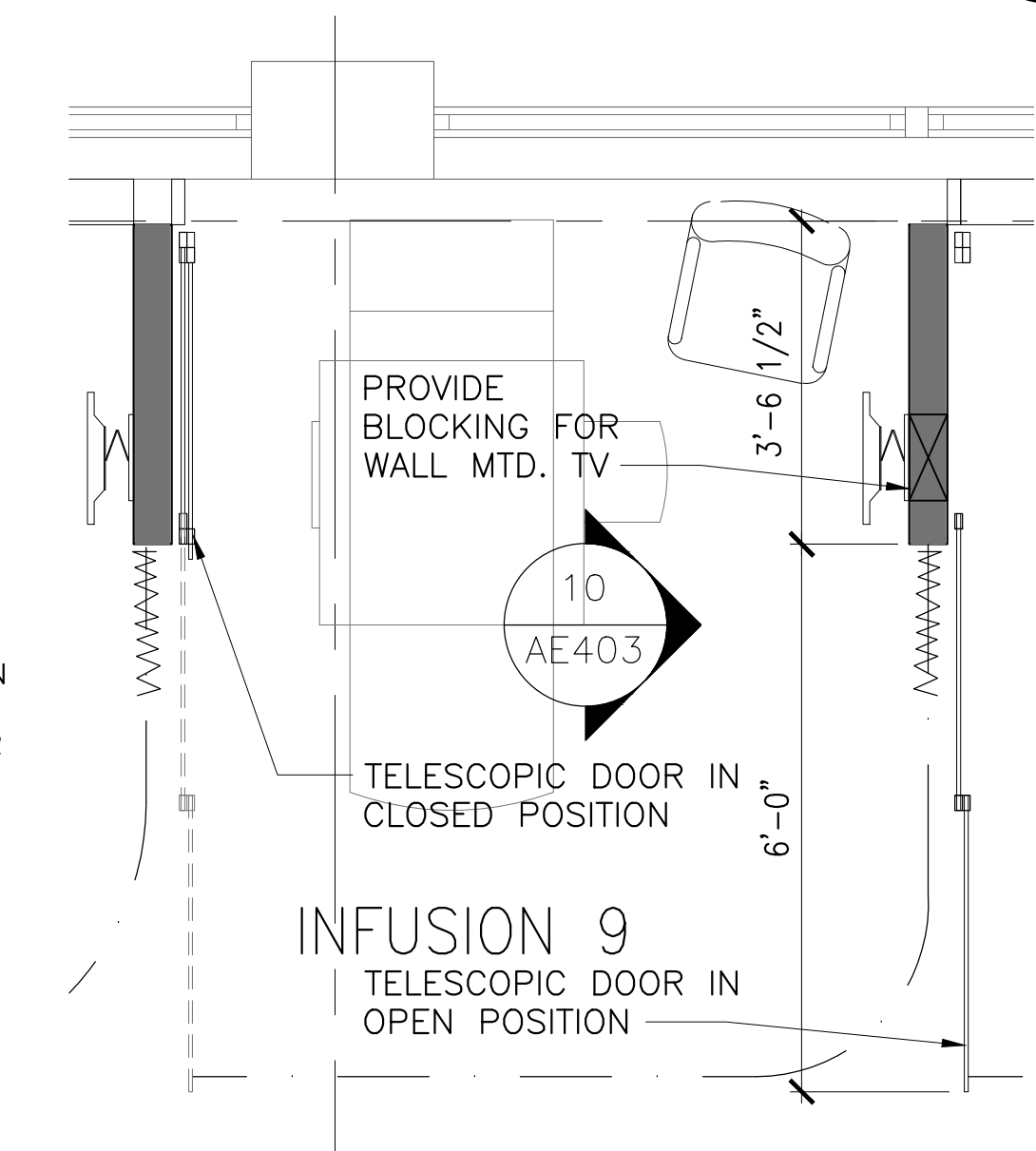
4 CASEWORK ELEVATION
NURSE'S STATION - INFUSION 2C-144
SCALE: 1/4"-1'-0"



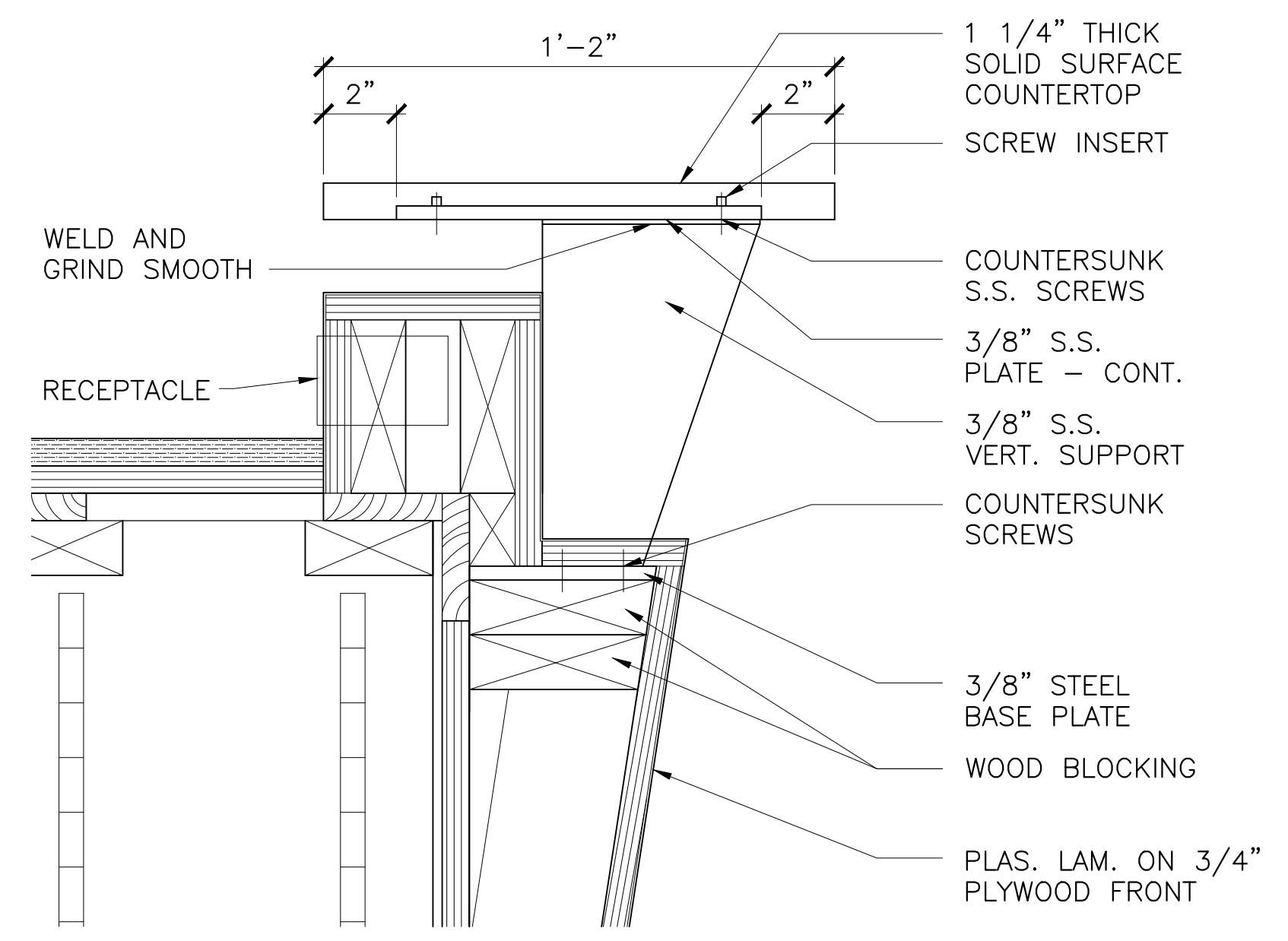
7 CASEWORK ELEVATION
NURSE'S STATION - INFUSION 2C-144
SCALE: 1/4"-1'-0"



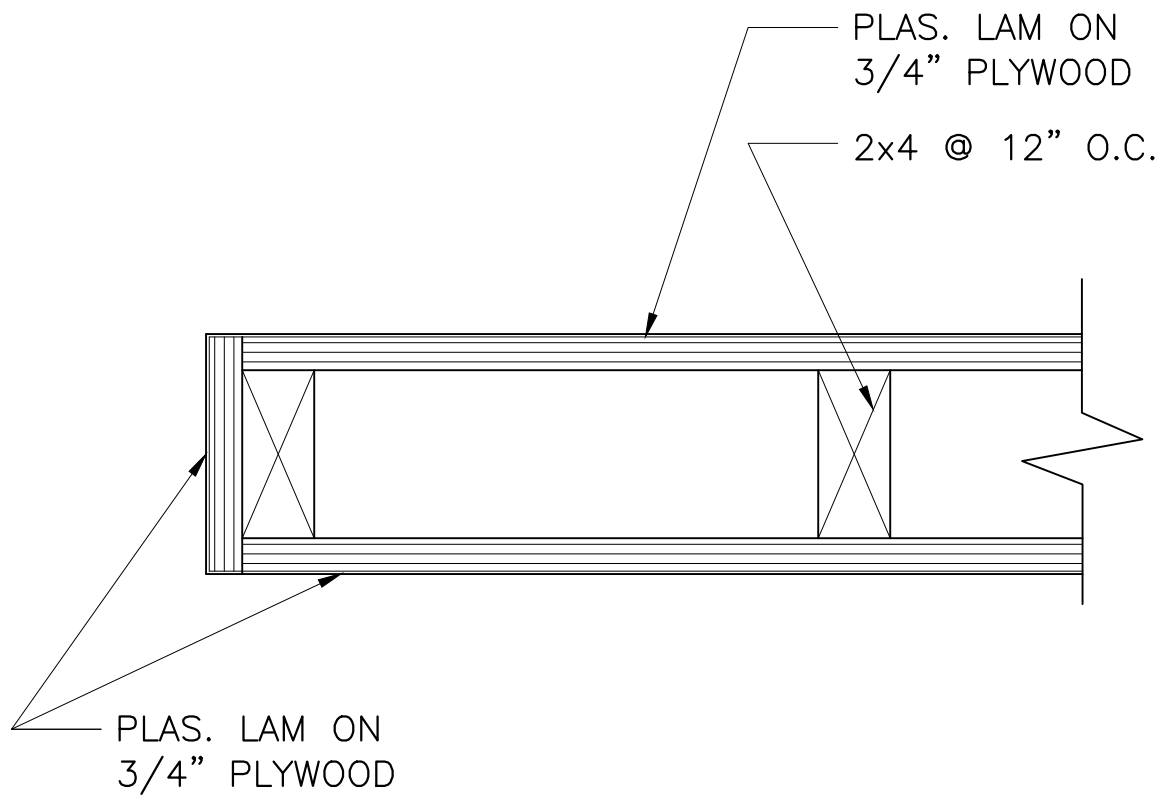
10 TYPICAL
PATIENT SERVICE WALL
SCALE: 1/4"-1'-0"



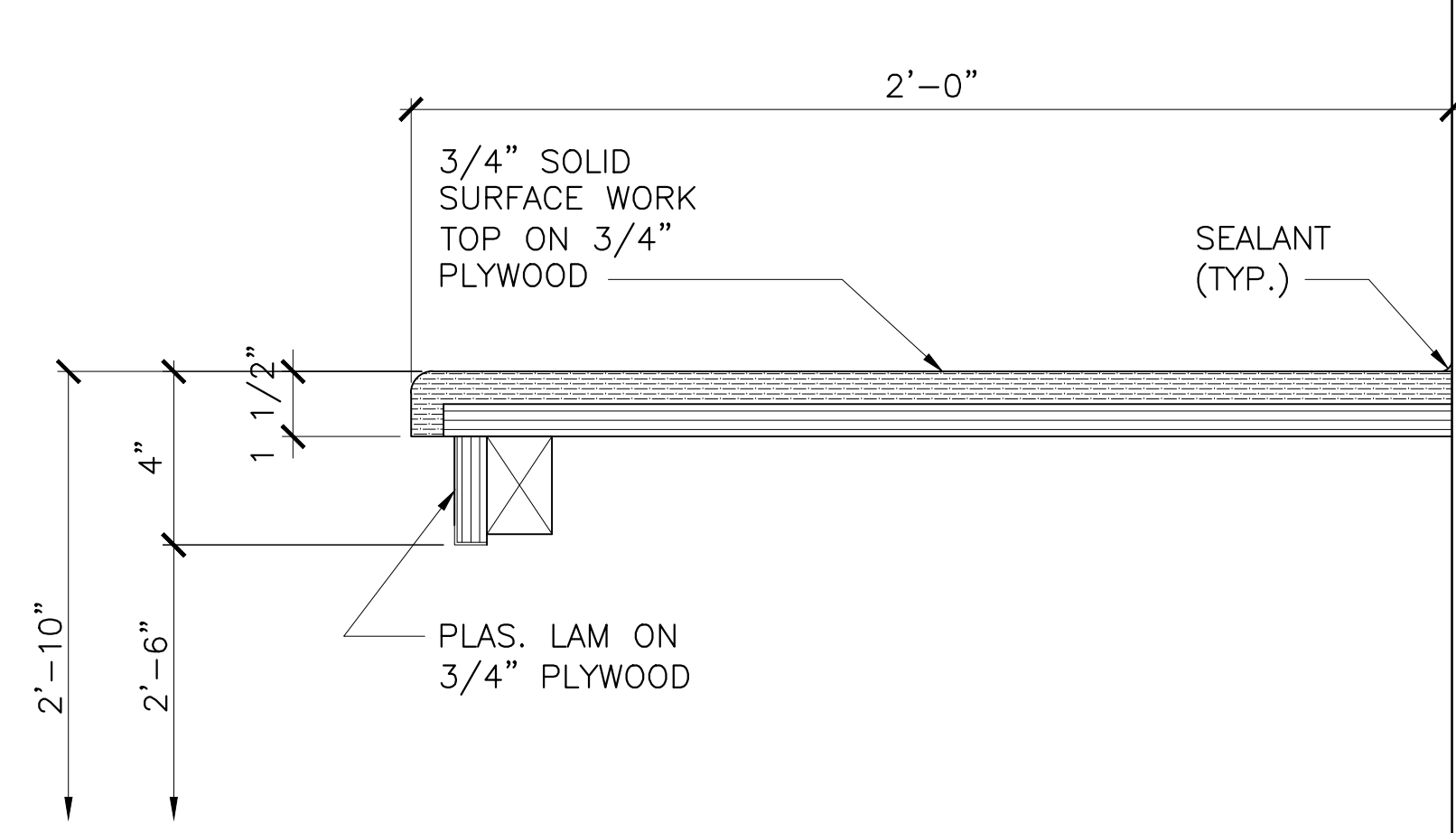
11 INFUSION PLAN
SCALE: 1/2"-1'-0"



12 DETAIL
SCALE: 3'-1'-0"

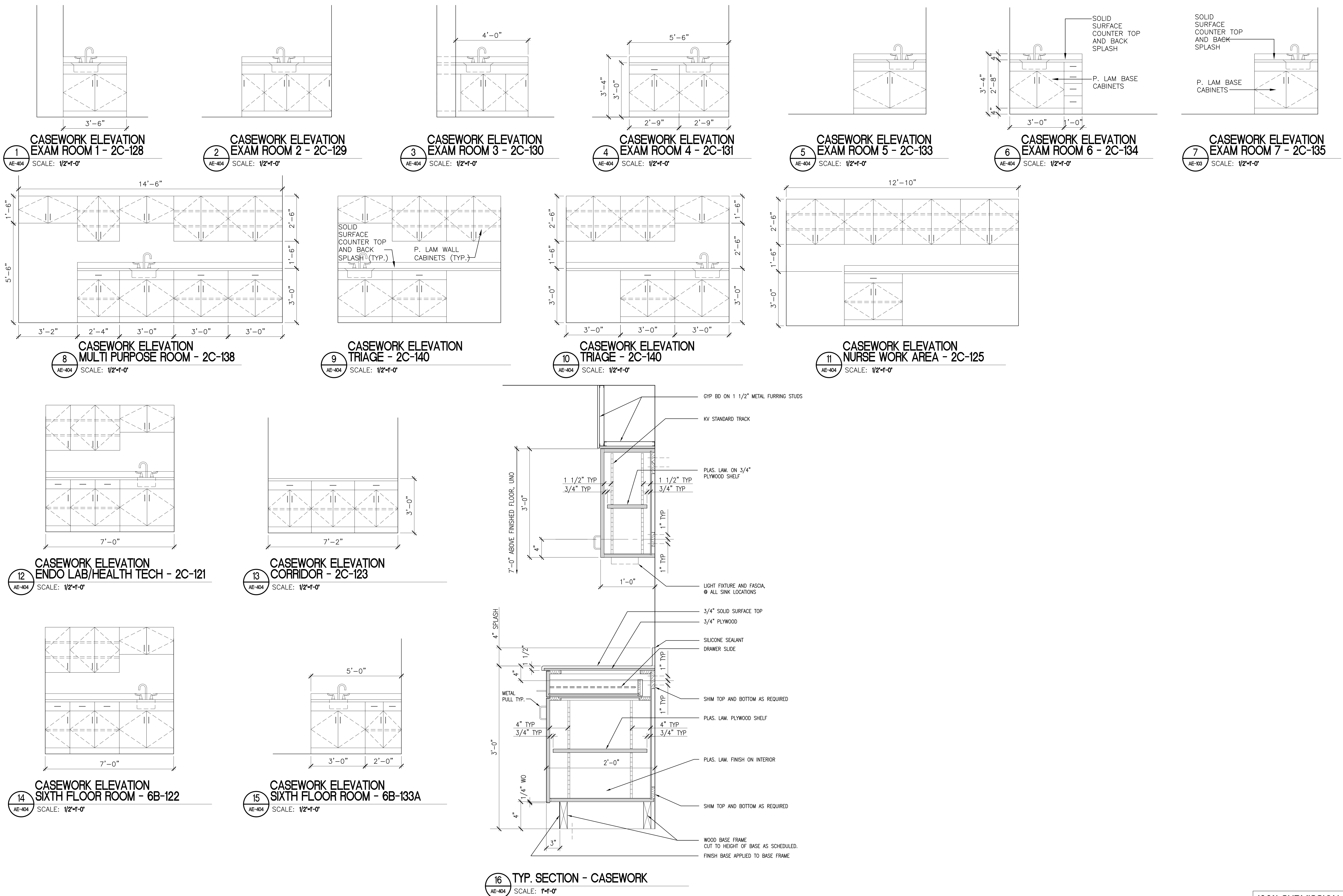


13 END WALL DETAIL
SCALE: 3'-1'-0"



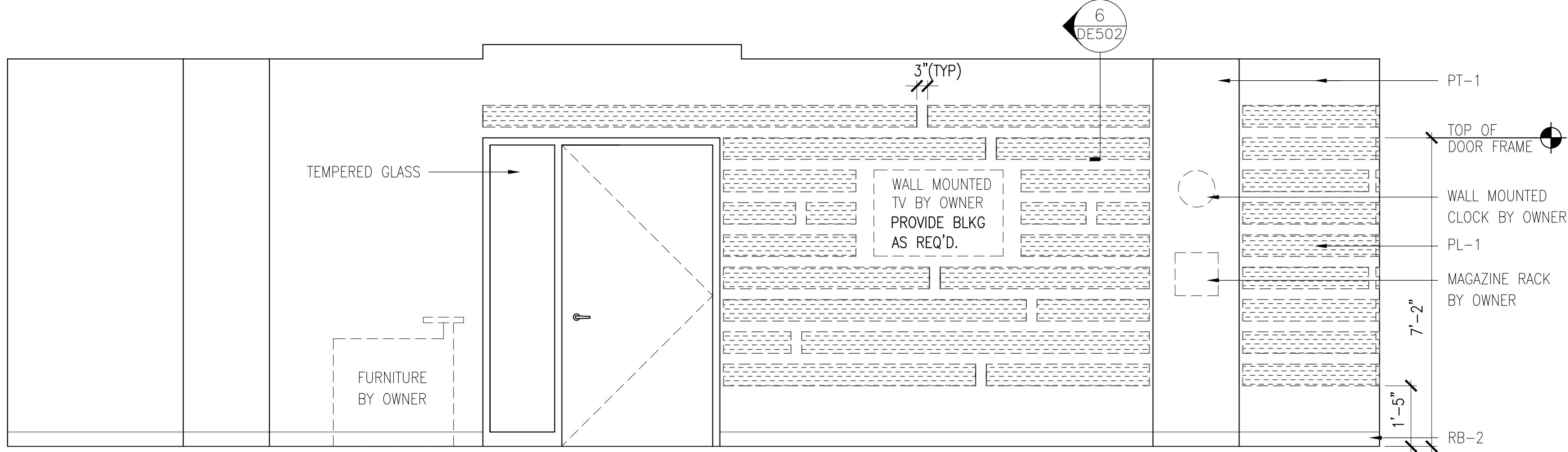
14 DETAIL
SCALE: 3'-1'-0"

CONSULTANTS: LEO A DALY PLANNING ARCHITECTURE ENGINEERING INTERIORS 1201 Connecticut Ave NW Washington DC 20036 USA Tel 202-861-4600 Fax 202-872-8530		ARCHITECT: MIMAR ARCHITECTS, INC. Architecture, Engineering, Design/Build 7000 Security Blvd, Suite #320 Baltimore, MD 21244 Phone: 410-944-4900 Fax: 410-499-8044		Drawing Title CASEWORK - NURSE'S STATION ELEVATIONS AND SECTIONS Approved Project Director APPROVED - BY - NAME APPROVED - BY - TITLE/RANK STATION - MANAGEMENT		Project Title RENOVATE / BACKFILL ONCOLOGY 2C, 3D SLEEP LAB AND MSO Location VAMC BALTIMORE, MD. Date October 1, 2014 Checked LT Drawn MC		100% SUBMISSION Project Number 512-14-102 Building Number Drawing Number AE-403 Dwg. 35 of 98		Office of Construction and Facilities Management Department of Veterans Affairs	
Revisions		Date									



		CONSULTANTS:		ARCHITECT:		Drawing Title		Project Title		Project Number		Office of Construction and Facilities Management Department of Veterans Affairs	
		<div>LEO A DALY</div> <div>PLANNING ARCHITECTURE ENGINEERING INTERIORS</div> <div>1201 Connecticut Ave NW Washington, DC 20036 USA Tel: 202-681-4600 Fax: 202-672-9530</div>		<div>MIMAR ARCHITECTS, INC.</div> <div>Architecture, Engineering, Design/Build 7000 Security Blvd, Suite #320 Baltimore, MD 21244 Phone: 410-944-4900 Fax: 410-499-8044</div>		RENOVATE / BACKFILL ONCOLOGY 2C, 3D SLEEP LAB AND MSO		512-14-102		Building Number			
								Drawing Number					
								AE-404		Dwg. 36 of 98			
Revisions:		Date				Approved Project Director		Location		Drawing			
						APPROVED - BY - NAME		VAMC BALTIMORE, MD.		Date			
						APPROVED - BY - TITLE/RANK				October 1, 2014		Checked LT	
						STATION - MANAGEMENT						Drawn MC	

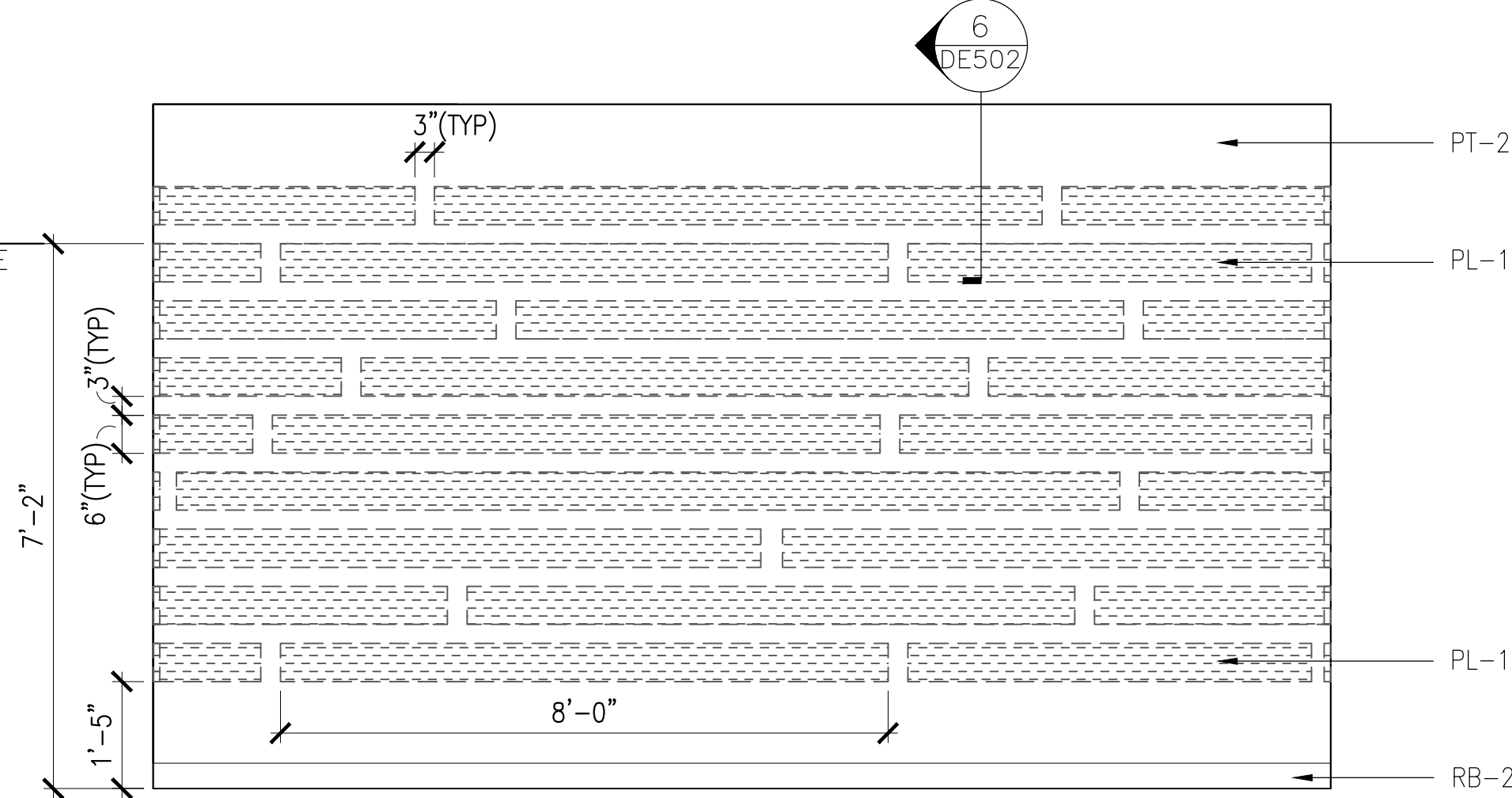
three inches = one foot
one and one half inches = one foot
one inch = one foot
three quarters inch = one foot
one half inch = one foot
three eighths inch = one foot
one quarter inch = one foot
one eighth inch = one foot



SEE SHEET AI-101 FOR FINISH TYPES

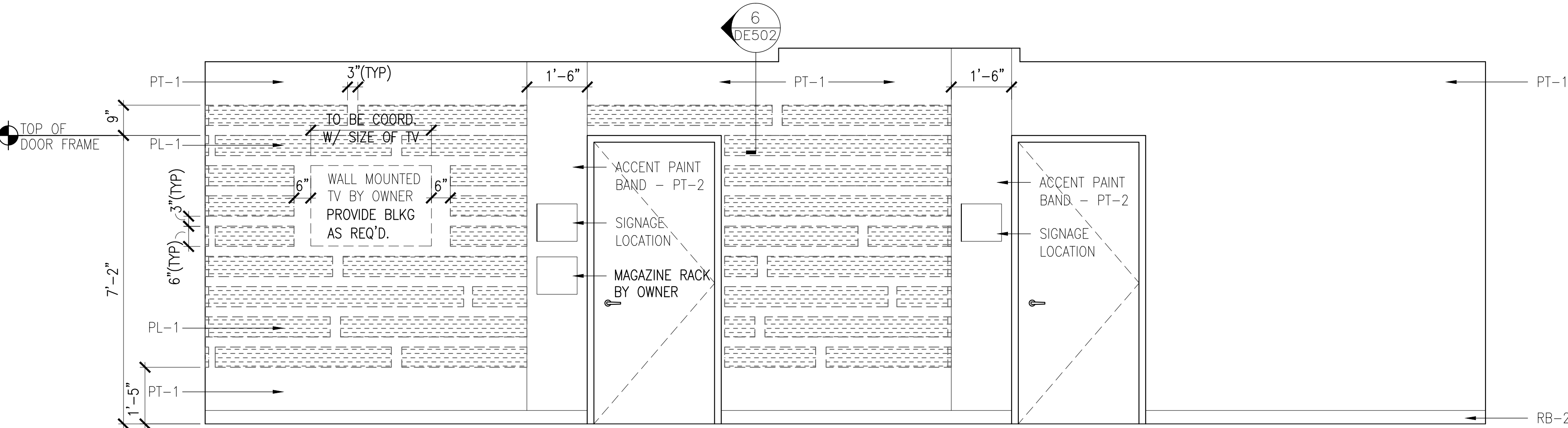
1
WAITING AREA
RECEPTION SOUTH WALL ELEVATION - 2C-139
SCALE: 1/2"=1'-0"

NOTE: MILLWORK SUBCONTRACTOR TO PROVIDE
LAY-OUT SHOP DRAWINGS FOR
PLASTIC LAMINATE PANELS.



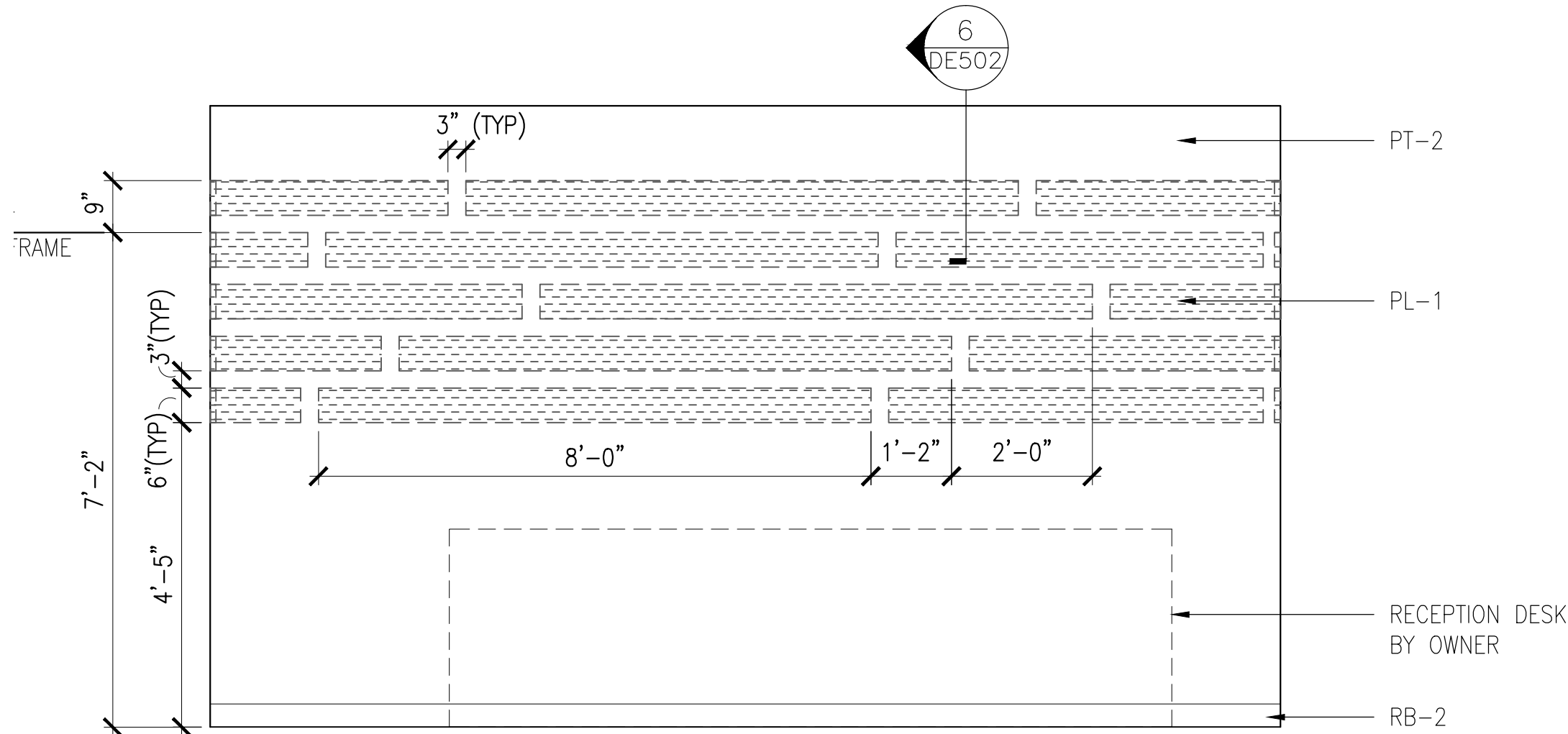
SEE SHEET AI-101 FOR FINISH TYPES

2
WAITING AREA
RECEPTION WEST WALL ELEVATION - 2C-139
SCALE: 1/2"=1'-0"



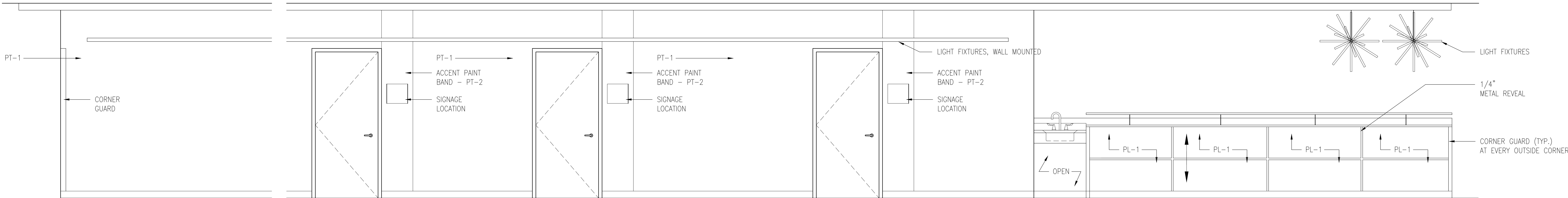
SEE SHEET AI-101 FOR FINISH TYPES

3
WAITING AREA
RECEPTION NORTH WALL ELEVATION - 2C-139
SCALE: 1/2"=1'-0"



SEE SHEET AI-101 FOR FINISH TYPES

4
WAITING AREA
RECEPTION EAST WALL ELEVATION - 2C-139
SCALE: 1/2"=1'-0"



SEE SHEET AI-101 FOR FINISH TYPES

5
CORRIDOR
SOUTH WALL ELEVATION
SCALE: 3/8"=1'-0"

		CONSULTANTS:		ARCHITECT:		Drawing Title INTERIOR ELEVATIONS		Project Title RENOVATE / BACKFILL ONCOLOGY 2C, 3D SLEEP LAB AND MSO		100% SUBMISSION	
		LEO A DAILY PLANNING ARCHITECTURE ENGINEERING INTERIORS 1201 Connecticut Ave NW Washington DC 20036 USA Tel 202-861-4600 Fax 202-872-8530		MIMAR ARCHITECTS, INC. Architecture, Engineering, Design/Build 7000 Security Blvd, Suite #320 Baltimore, MD 21244 Phone: 410-944-4900 Fax: 410-499-8044		Approved Project Director APPROVED - BY - NAME APPROVED - BY - TITLE/RANK STATION - MANAGEMENT		Location VAMC BALTIMORE, MD.		Project Number 512-14-102	
						Date October 1, 2014		Checked LT		Building Number	
						Drawn RH		Drawing Number AE-405		Office of Construction and Facilities Management	
								Dwg. 37 of 98		Department of Veterans Affairs	