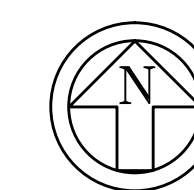


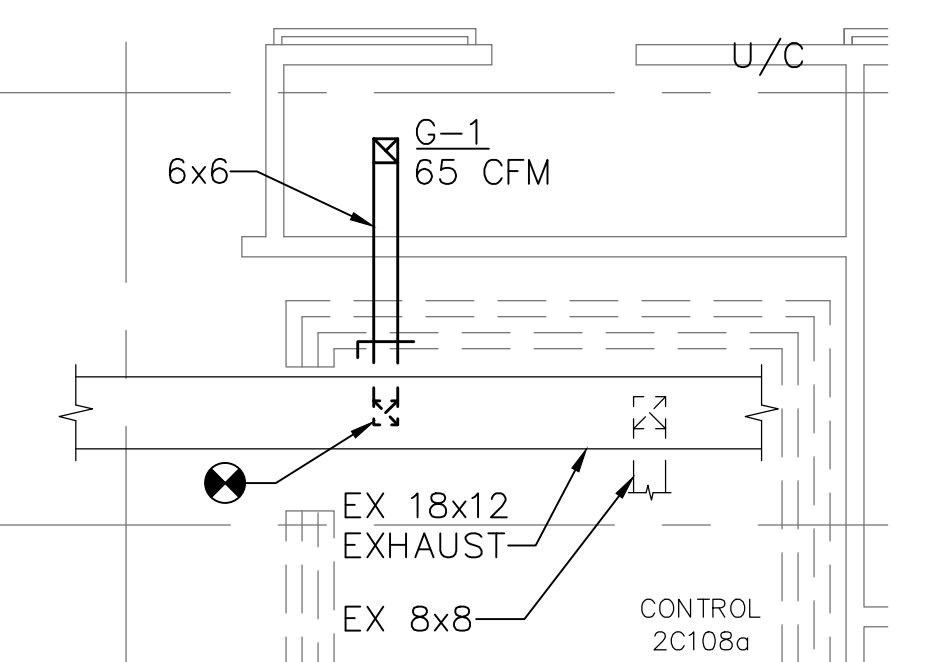
PARTIAL SECOND FLOOR PLAN – ONCOLOGY/ENDOCRINOLOGY
SUITES – MECHANICAL WORK

SCALE: $\frac{1}{4}" = 1'-0"$

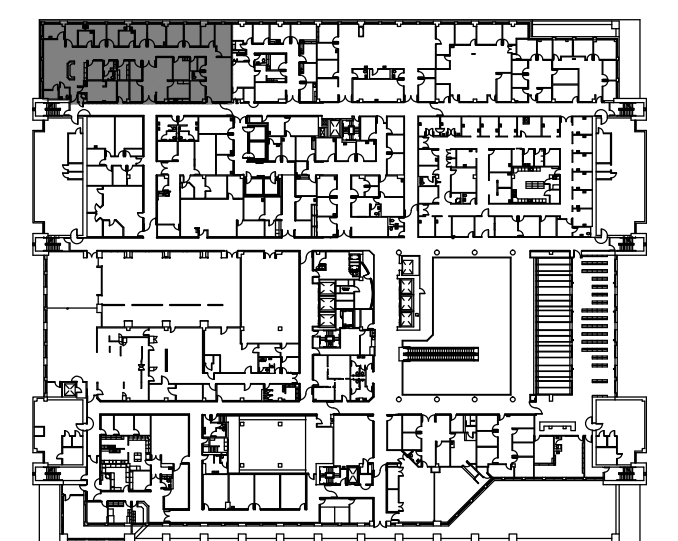


GENERAL NOTES: (APPLY TO THIS DRAWING ONLY)

1. ALL MECHANICAL SYSTEMS AND DUCTWORK ARE LOCATED IN AN INTERSTITIAL SPACE ABOVE THE FLOOR THEY SERVE. PROVIDE OPENINGS IN THE FLOOR OF THE INTERSTITIAL SPACE AS NECESSARY TO CONNECT DUCTWORK TO AIR DEVICES AND SEAL ANY OPENINGS THAT REMAIN AFTER DUCTWORK IS REMOVED.



KEY PLAN



SECOND FLOOR

100% SUBMISSION

Project Number	510-11-100
----------------	------------

512-14
Building NumberBuilding Number
-

	Drawing Number

MH-101

Run 7 of 23

Office of
Construction
and Facilities
Management






CAUTION:
IF THIS PLAN IS A REDUCTION,
GRAPHIC SCALES MUST BE USED.

GRAPHIC SCALE

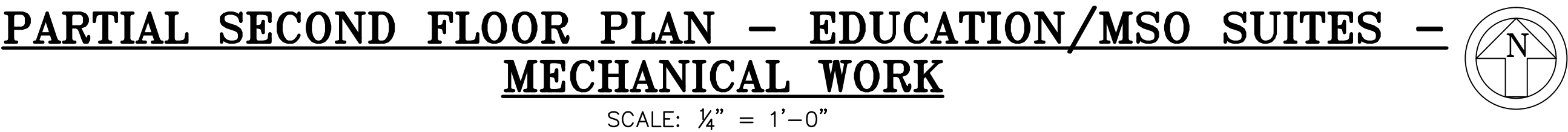


FULLY SPRINKLERED

						ARCHITECT/ENGINEERS:		Drawing Title PARTIAL SECOND FLOOR PLAN - ONCOLOGY/ENDOCRINOLOGY SUITES - MECHANICAL WORK		Project Title RENOVATE / BACKFILL ONCOLOGY 2C, 3D SLEEP LAB AND MSO		Project Number 512-14-102		Office of Construction and Facilities Management							
						 MIMAR ARCHITECTS, INC. Architecture, Engineering, Design/Build 7000 Security Blvd, Suite #320 Baltimore, MD 21244 Phone: 410-944-4900 Fax: 410-499-8044		 EBL ENGINEERS, LLC MECHANICAL • ELECTRICAL • FIRE PROTECTION The Professional Engineering Center 8005 Hartford Road, Baltimore, Maryland 21234-5701 (+410) 668-8000 Fax (+410) 668-8001 e-mail: ebl@eblengineers.com		Location YAMC BALTIMORE, MD.		Building Number -									
Revisions:		Date						Approved Project Director APPROVED - BY - NAME APPROVED - BY - TITLE/RANK STATION - MANAGEMENT		<table><tr><td>Date</td><td>Checked</td><td>Drawn</td></tr><tr><td>OCTOBER 1, 2014</td><td>MPS</td><td>SLB</td></tr></table>		Date	Checked	Drawn	OCTOBER 1, 2014	MPS	SLB	Drawing Number MH-101		Dwg. 57 of 98	
Date	Checked	Drawn																			
OCTOBER 1, 2014	MPS	SLB																			
														 Veterans Affairs							

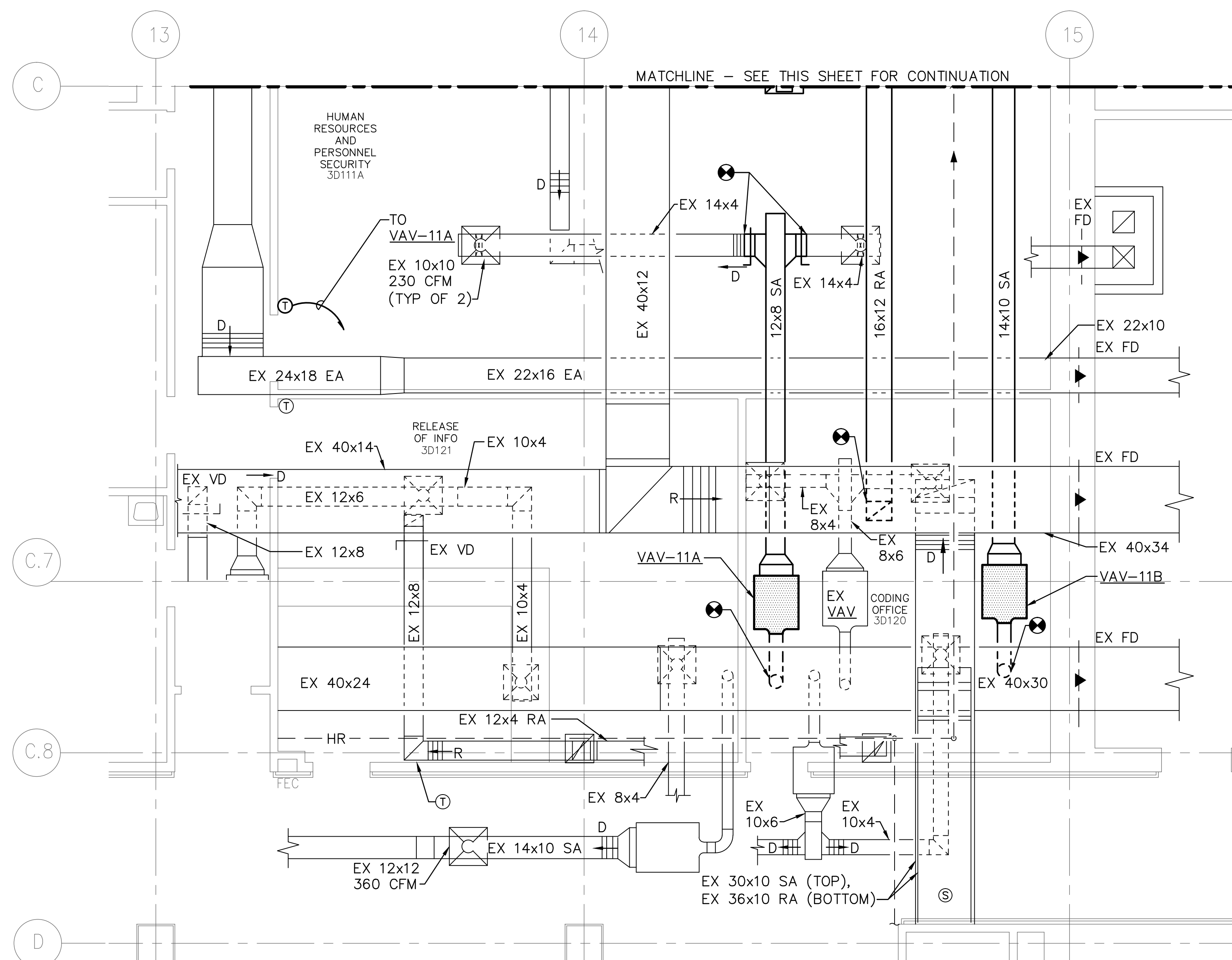
1. ALL MECHANICAL SYSTEMS AND DUCTWORK ARE LOCATED IN AN INTERSTITIAL SPACE ABOVE THE FLOOR THEY SERVE. PROVIDE OPENINGS IN THE FLOOR OF THE INTERSTITIAL SPACE AS NECESSARY TO CONNECT DUCTWORK TO AIR DEVICES AND SEAL ANY OPENINGS THAT REMAIN AFTER DUCTWORK IS REMOVED.

① EXTEND DUCT RUN OUT AS REQUIRED TO REACH LOCATION OF AIR DEVICE IN REVISED CEILING GRID.



Department of
Veterans Affairs

Dwg. 58 of 98





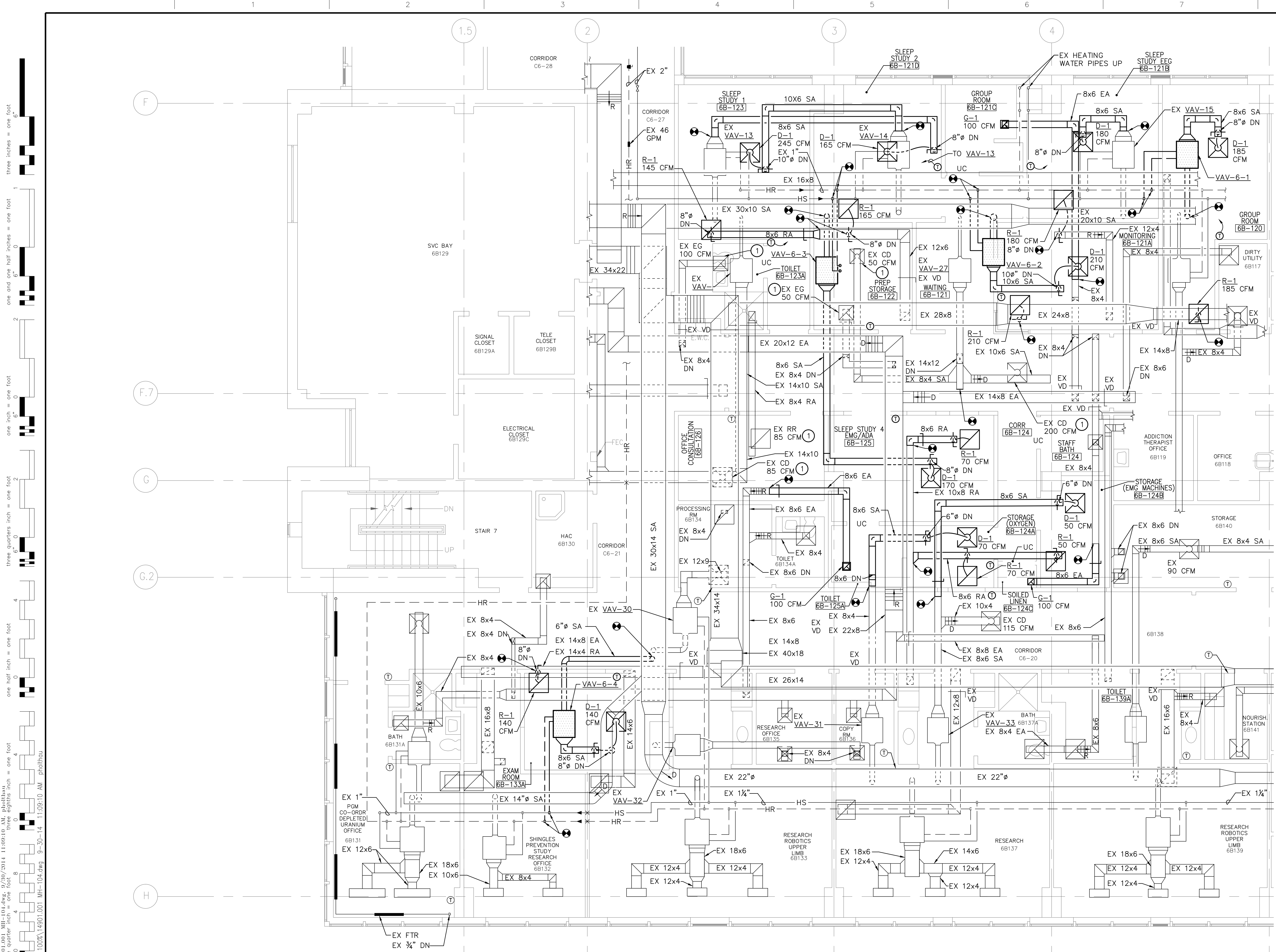
1. ALL MECHANICAL SYSTEMS AND DUCTWORK ARE LOCATED IN AN INTERSTITIAL SPACE ABOVE THE FLOOR THEY SERVE. PROVIDE OPENINGS IN THE FLOOR OF THE INTERSTITIAL SPACE AS NECESSARY TO CONNECT DUCTWORK TO AIR DEVICES AND SEAL ANY OPENINGS THAT REMAIN AFTER DUCTWORK IS REMOVED.

0 2' 4' 8' 12' $1/4"=1'-0"$



SCALE: $\frac{1}{4}" = 1'-0"$

		CONSULTANTS:				ARCHITECT/ENGINEERS:		<div><div></div><div>MIMAR ARCHITECTS, INC. Architecture, Engineering, Design/Build 7000 Security Blvd, Suite #320 Baltimore, MD 21244 Phone: 410-944-4900 Fax: 410-499-8044</div></div>		<div><div></div><div>EBL ENGINEERS, LLC MECHANICAL • ELECTRICAL • FIRE PROTECTION The Professional Engineering Center 8005 Hartford Road, Baltimore, Maryland 21234-5701 (410) 668-8000 FAX (410) 668-8001 e-mail: ebl@eblengineers.com</div></div>		Drawing Title PARTIAL THIRD FLOOR PLAN - MECHANICAL WORK		Project Title RENOVATE / BACKFILL ONCOLOGY 2C, 3D SLEEP LAB AND MSO		Project Number 512-14-102		Office of Construction and Facilities Management <div> Department of Veterans Affairs</div>	
						Approved Project Director APPROVED - BY - NAME APPROVED - BY - TITLE/RANK STATION - MANAGEMENT		Location VAMC BALTIMORE, MD.		Building Number -		Drawing Number MH-103							
Revisions:		Date				Date OCTOBER 1, 2014		Checked MPS		Drawn SLB		Dwg. 59 of 98							

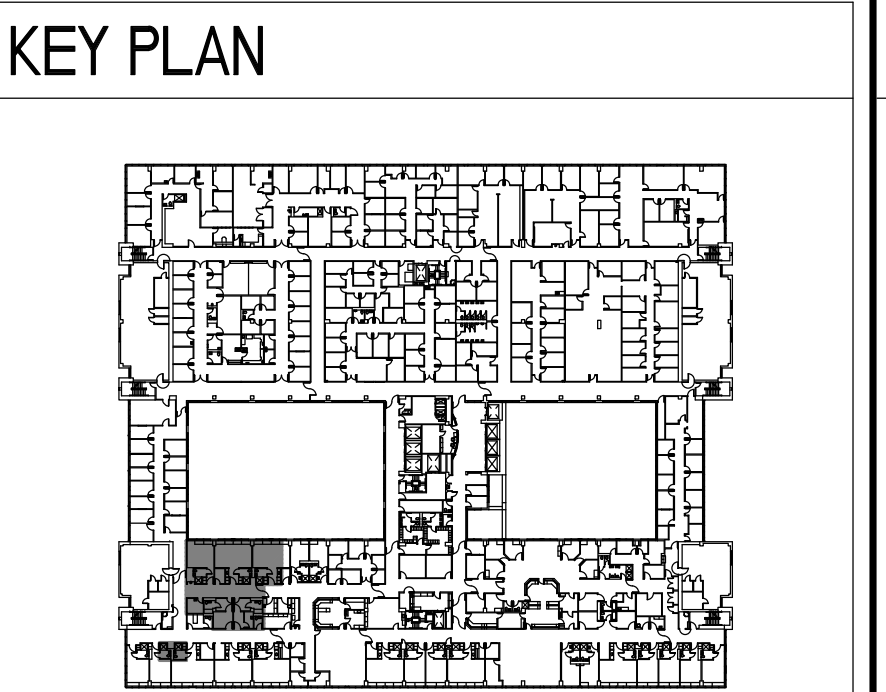


- GENERAL NOTES:** (APPLY TO THIS DRAWING ONLY)
- ALL MECHANICAL SYSTEMS AND DUCTWORK ARE LOCATED IN AN INTERSTITIAL SPACE ABOVE THE FLOOR THEY SERVE. PROVIDE OPENINGS IN THE FLOOR OF THE INTERSTITIAL SPACE AS NECESSARY TO CONNECT DUCTWORK TO AIR DEVICES AND SEAL ANY OPENINGS THAT REMAIN AFTER DUCTWORK IS REMOVED.
- DRAWING NOTES:** (APPLY TO THIS DRAWING ONLY)
- EXTEND DUCT RUN OUT AS REQUIRED TO REACH LOCATION OF AIR DEVICE IN REVISED CEILING GRID.

CAUTION:
IF THIS PLAN IS A REDUCTION,
GRAPHIC SCALES MUST BE USED.

GRAPHIC SCALE

0 2' 4' 8' 12' 1/4"=1'-0"



PARTIAL SIXTH FLOOR PLAN - MECHANICAL WORK

SCALE: 1/8" = 1'-0"



CONSULTANTS:		ARCHITECT/ENGINEERS:		Drawing Title PARTIAL SIXTH FLOOR PLAN - MECHANICAL WORK		Project Title RENOVATE / BACKFILL ONCOLOGY 2C, 3D SLEEP LAB AND MSO		100% SUBMISSION	
Revisions:		Date:		Approved Project Director APPROVED - BY - NAME APPROVED - BY - TITLE/RANK STATION - MANAGEMENT		Location VAMC BALTIMORE, MD.		Project Number 512-14-102	
						Date OCTOBER 1, 2014		Building Number -	
						Checked MPS		Drawing Number MH-104	
						Drawn SLB		Dwg. 60 of 98	

Office of
Construction
and Facilities
Management

Department of
Veterans Affairs

[illegible]

AIR DEVICE SCHEDULE							
UNIT SYMBOL	MOUNTING	CFM RANGE	NECK/DUCT SIZE (IN)	FACE SIZE (IN)	APD (IN)	NOTES	REMARKS
G-1	CEILING	0-100 101-200 201-300 301-450	6x6 8x8 10x10 12x12	8x8 10x10 12x12 14x14	0.1 0.1 0.1 0.1	6	-
D-1	CEILING	0-100 101-200 201-275 276-400 401-535	6 8 10 12 14	24x24 24x24 24x24 24x24 24x24	0.1 0.1 0.1 0.1 0.1	1,3	-
D-2	CEILING	0-265	2-1" SLOTS	4 1/4"x5'(L)	0.1	3	-
R-1	CEILING	0-100 101-200 201-275 276-400 401-535	6 8 10 12 14	24x24 24x24 24x24 24x24 24x24	0.1 0.1 0.1 0.1 0.1	1,4	-
NOTES: 1. 24x24 LAY-IN 2. OPPOSED BLADE DAMPER 3. SUPPLY 4. RETURN 5. TRANSFER 6. EXHAUST							

<h1>ARCHITECT/ENGINEERS:</h1>	
	<p>MIMAR ASSOCIATES, INC. Architecture, Engineering, Design/Build 7000 Security Blvd., Suite #320 Baltimore, MD 21244 Phone: 410-944-4900 Fax: 410-499-8044</p>
	<p>EBL ENGINEERS, LLC <u>MECHANICAL • ELECTRICAL • FIRE PROTECTION</u> The Professional Engineering Center 8005 Hartford Road, Baltimore, Maryland 21234-5701 (410) 668-0020 FAX (410) 668-9001 e-mail: ebll@ebll-engineers.com</p>

Drawing Title	
MECHANICAL SCHEDULES + CONTROL SEQUENCES	
Approved Project Director	
APPROVED - BY - NAME	
APPROVED - BY - TITLE/RANK	
STATION - MANAGEMENT	

Project Title RENOVATE / BACKFILL ONCOLOGY 2C, 3D SLEEP LAB AND MSO			Project Number 512-14-102	
Location YAMC BALTIMORE, MD.			Building Number -	
Drawing Number MI-601				
Date OCTOBER 1, 2014	Checked MPS	Drawn SLB		
			Dwg. 61 of 98	

Office of
Construction
and Facilities
Management

 Department of
Veterans Affairs