

GENERAL NOTES:

(APPLY TO THIS DRAWING ONLY)

1. IN GENERAL DOMESTIC WATER & VENT PIPING IS LOCATED IN AN INTERSTITIAL SPACE ABOVE THE FLOOR IT SERVES AND SANITARY PIPE IS LOCATED IN AN INTERSTITIAL SPACE BELOW THE FLOOR IT SERVES. PROVIDE OPENINGS IN THE FLOOR OF THE INTERSTITIAL SPACE AS NECESSARY TO CONNECT PIPING TO FIXTURES AND SEAL ANY OPENINGS THAT REMAIN AFTER PIPING IS REMOVED.

DRAWING NOTES:

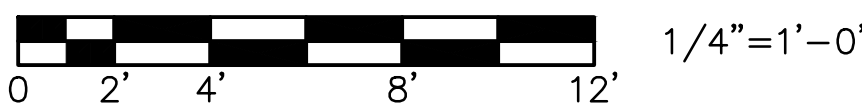
(APPLY TO THIS DRAWING ONLY)

- 1 REMOVE EXISTING FIXTURE AND ALL ASSOCIATED PIPING BACK TO POINT OF DISCONNECT AS INDICATED.
- 2 SINK SHALL REMAIN IN USE IN PHASE 4. SINK TO BE DEMOLISHED UNDER PHASE 6. SEE SHEET G-006 FOR ADDITIONAL INFORMATION.

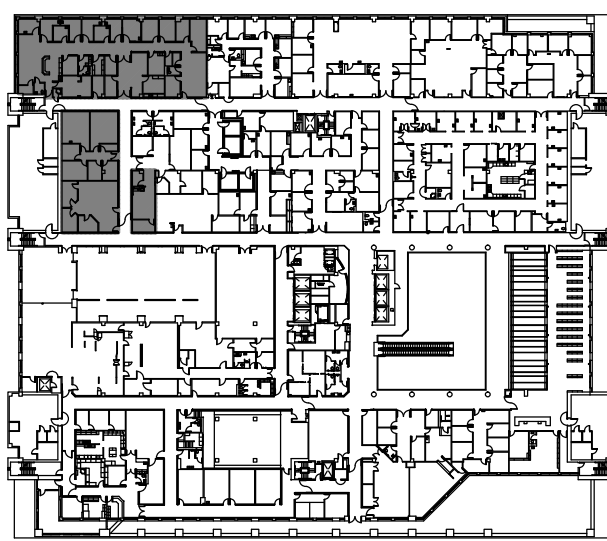
CAUTION:

IF THIS PLAN IS A REDUCTION, GRAPHIC SCALES MUST BE USED.

GRAPHIC SCALE



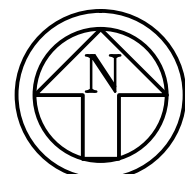
KEY PLAN



SECOND FLOOR

PARTIAL SECOND FLOOR PLAN - ONCOLOGY/ENDOCRINOLOGY SUITES - PLUMBING DEMOLITION

SCALE: 1/4" = 1'-0"



CONSULTANTS:

ARCHITECT/ENGINEERS:

MIMAR ARCHITECTS, INC.
Architecture, Engineering, Design/Build
7000 Security Blvd, Suite #320
Baltimore, MD 21244
Phone: 410-944-4900 Fax: 410-499-8044

EBL ENGINEERS, LLC
MECHANICAL • ELECTRICAL • FIRE PROTECTION
The Professional Engineering Center
8005 Harford Road, Baltimore, Maryland 21234-5701
(410) 668-8000 FAX (410) 668-8001
e-mail: ebl@eblengineers.com

Drawing Title
PARTIAL SECOND FLOOR PLAN - ONCOLOGY/ENDOCRINOLOGY SUITES - PLUMBING DEMOLITION

Approved Project Director
APPROVED - BY - NAME
APPROVED - BY - TITLE/RANK
STATION - MANAGEMENT

Project Title
RENOVATE / BACKFILL ONCOLOGY 2C, 3D SLEEP LAB AND MSO

Location
VAMC BALTIMORE, MD.
Date
OCTOBER 1, 2014

Checked
MPS
Drawn
SLB

100% SUBMISSION

Project Number
512-14-102
Building Number
-
Drawing Number
PD-101
Dwg. 62 of 98

Office of
Construction
and Facilities
Management



three inches = one foot

one inch = one foot

one half inch = one foot

three quarters inch = one foot

one half inch = one foot

three eighths inch = one foot

one quarter inch = one foot

one eighth inch = one foot

one eighth inch = one foot

one eighth inch = one foot

one eighth inch = one foot

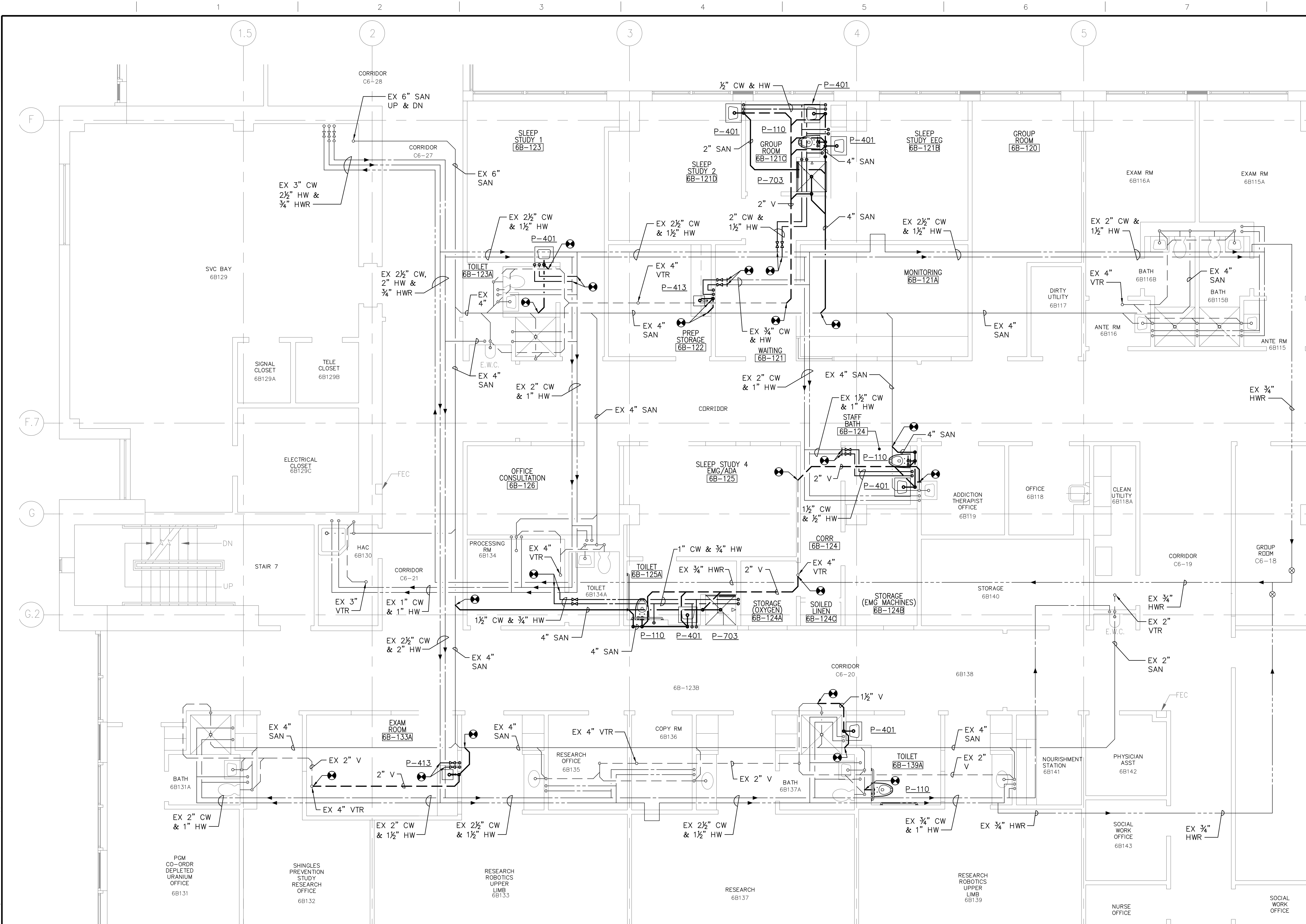
one eighth inch = one foot

- DRAINING NOTES**
(APPLY TO THIS DRAWING ONLY)

- SCALE: $\frac{1}{4}" = 1'-0"$

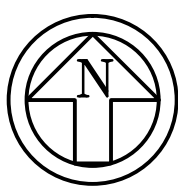
VA FORM 08-6231

three eighths inch = one foot
one eighth inch = one foot
one quarter inch = one foot
three quarters inch = one foot
one half inch = one foot
one inch = one foot
one and one half inches = one foot
two inches = one foot
three inches = one foot
four inches = one foot
six inches = one foot
eight inches = one foot
ten inches = one foot
twelve inches = one foot
fourteen inches = one foot
sixteen inches = one foot
eighteen inches = one foot
twenty inches = one foot
twenty-two inches = one foot
twenty-four inches = one foot
twenty-six inches = one foot
twenty-eight inches = one foot
thirty inches = one foot
thirty-two inches = one foot
thirty-four inches = one foot
thirty-six inches = one foot
thirty-eight inches = one foot
forty inches = one foot
forty-two inches = one foot
forty-four inches = one foot
forty-six inches = one foot
forty-eight inches = one foot
fifty inches = one foot
fifty-two inches = one foot
fifty-four inches = one foot
fifty-six inches = one foot
fifty-eight inches = one foot
sixty inches = one foot
sixty-two inches = one foot
sixty-four inches = one foot
sixty-six inches = one foot
sixty-eight inches = one foot
seventy inches = one foot
seventy-two inches = one foot
seventy-four inches = one foot
seventy-six inches = one foot
seventy-eight inches = one foot
eighty inches = one foot
eighty-two inches = one foot
eighty-four inches = one foot
eighty-six inches = one foot
eighty-eight inches = one foot
ninety inches = one foot
ninety-two inches = one foot
ninety-four inches = one foot
ninety-six inches = one foot
ninety-eight inches = one foot
one hundred inches = one foot



PARTIAL SIXTH FLOOR PLAN - PLUMBING WORK

SCALE: 1/4" = 1'-0"



GENERAL NOTES:

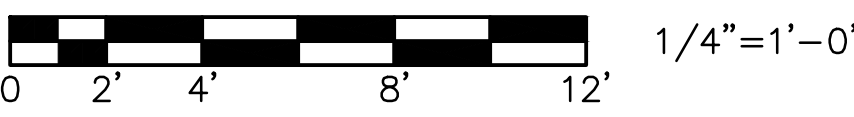
(APPLY TO THIS DRAWING ONLY)

1. IN GENERAL DOMESTIC WATER & VENT PIPING IS LOCATED IN AN INTERSTITIAL SPACE ABOVE THE FLOOR IT SERVES AND SANITARY PIPE IS LOCATED IN AN INTERSTITIAL SPACE BELOW THE FLOOR IT SERVES. PROVIDE OPENINGS IN THE FLOOR OF THE INTERSTITIAL SPACE AS NECESSARY TO CONNECT PIPING TO FIXTURES AND SEAL ANY OPENINGS THAT REMAIN AFTER PIPING IS REMOVED.

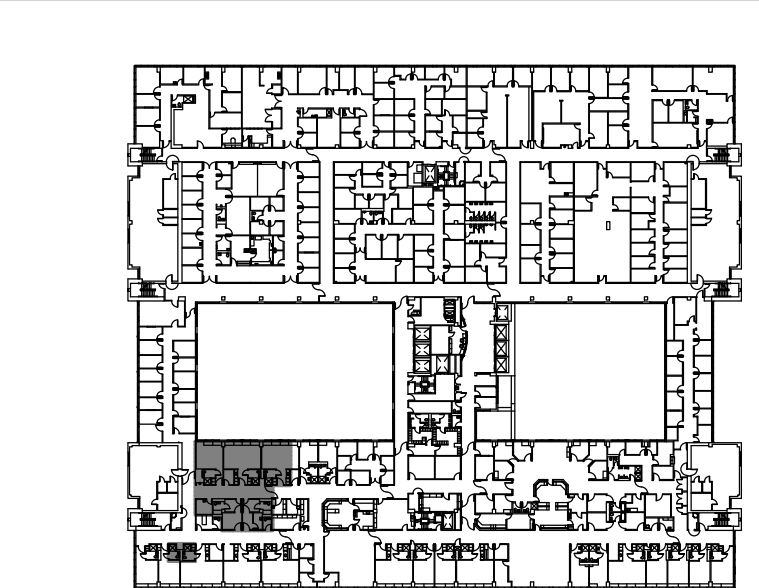
CAUTION:

IF THIS PLAN IS A REDUCTION, GRAPHIC SCALES MUST BE USED.

GRAPHIC SCALE



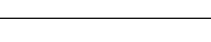


KEY PLAN



SIXTH FLOOR

FULLY SPRINKLERED

100% SUBMISSION

		CONSULTANTS:				ARCHITECT/ENGINEERS:		Drawing Title PARTIAL SIXTH FLOOR PLAN - PLUMBING WORK		Project Title RENOVATE / BACKFILL ONCOLOGY 2C, 3D SLEEP LAB AND MSO		Project Number 512-14-102		Office of Construction and Facilities Management			
										Building Number -		Drawing Number PL-102					
						 MIMAR ARCHITECTS, INC. Architecture, Engineering, Design/Build 7000 Security Blvd, Suite #320 Baltimore, MD 21244 Phone: 410-944-4900 Fax: 410-499-8044		 EBL ENGINEERS, LLC MECHANICAL • ELECTRICAL • FIRE PROTECTION The Professional Engineering Center 8005 Hartford Road, Baltimore, Maryland 21234-5701 (410) 668-8000 FAX (410) 668-8001 e-mail: eb@ebengineers.com		Approved Project Director APPROVED - BY - NAME APPROVED - BY - TITLE/RANK STATION - MANAGEMENT		Location VAMC BALTIMORE, MD.		Drawing Number PL-102		 Department of Veterans Affairs	
Revisions:		Date								Date OCTOBER 1, 2014		Checked MPS		Drawn SLB			

one eighth inch = one foot
 16
 8
 4
 0

one quarter inch = one foot
 8
 4
 0

one half inch = one foot
 4
 0

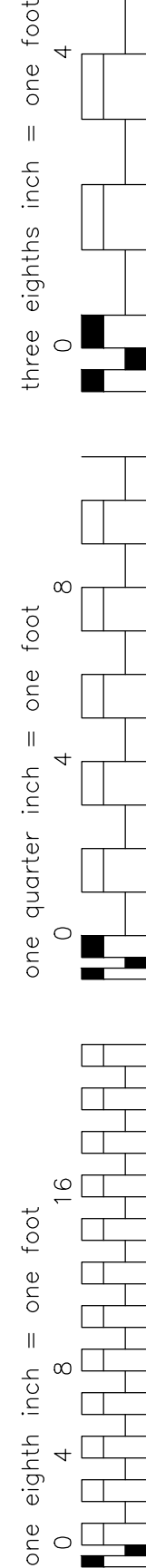
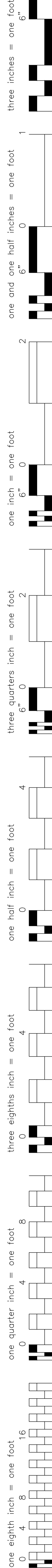
three quarters inch = one foot
 2
 0

one inch = one foot
 1
 0

one and one half inches = one foot
 6
 0

three inches = one foot
 2
 0

two feet = one foot
 1
 0



one eighth inch = one foot