

1 ARCHITECTURAL DIMENSION PLAN - LEVEL 1 ZONE A  
1/8" = 1'-0"

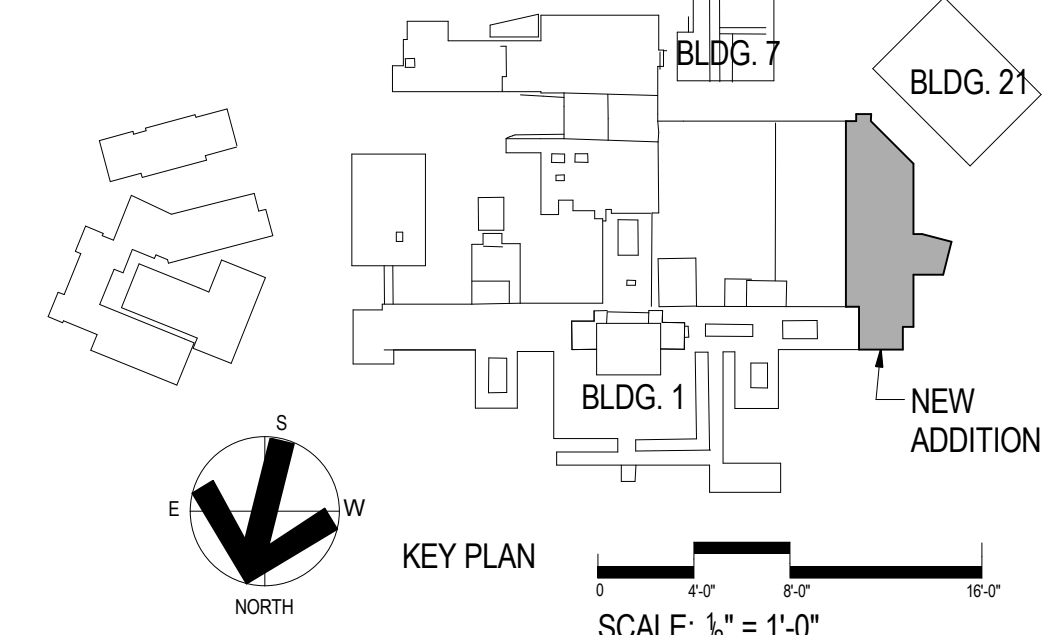
2 ARCHITECTURAL DIMENSION PLAN - LEVEL 1 ZONE B  
1/8" = 1'-0"

### GENERAL NOTES

- SOLID LINES INDICATE NEW CONSTRUCTION WHILE SCREENED LINES INDICATE EXISTING CONSTRUCTION OR NEW CONSTRUCTION COVERED IN A PREVIOUS DIVISION.
- ALL PIPING, CONDUITS AND RELATED MECH. AND ELEC. ITEMS SHALL BE CONCEALED WITHIN DRYWALL FURRING AS REQUIRED IN FINISHED AREAS WHETHER SHOWN ON DRAWINGS OR NOT, U.N.O.
- PROVIDE METAL PLATE BACKING AND/OR TREATED WOOD BLOCKING IN WALLS WHERE WALL-MOUNTED EQUIPMENT IS SHOWN ON PLANS OR ELEVATIONS. VERIFY HEIGHT AND LENGTH WITH ACTUAL EQUIPMENT.
- ALL MECH. EQUIPMENT PADS TO BE 4" HIGH U.N.O. LENGTH AND WIDTH OF PADS TO BE VERIFIED BY CONTRACTOR.
- VERIFY EXIST. DIMENSIONS, CONDITIONS AND FINISHES BEFORE PRICING AND/OR PROCEEDING WITH WORK. DISCREPANCIES SHALL BE BROUGHT TO THE ARCHITECT'S ATTENTION IMMEDIATELY.
- PATCH ALL HOLES IN EXIST. SURFACES WHERE EQUIPMENT HAS BEEN REMOVED OR DEMOLITION HAS OCCURRED. PREPARE SURFACES AS REQUIRED FOR NEW FINISHES. PATCH TO MATCH ADJACENT SURFACE IF NOT SCHEDULED.
- ALL EXIST. FLOOR OPENINGS AND DEPRESSIONS IN THE WORK AREA SHALL BE FILLED OR CLOSED U.N.O. WITH MATERIALS TO MATCH ADJACENT SURFACES, FINISHES, AND FIRE RATINGS.
- HOLD GNB 1/2" OFF FINISH FLOOR, INSTALL FIRE RATED SEALANT AT RATED PARTITIONS, INSTALL ACCOUSTICAL SEALANT AT NON-RATED PARTITIONS.
- FEATHER FLOOR LEVELING COMPOUND IN CORRIDORS AT EITHER SIDE OF EXPANSION JOINT TO A SLOPE NOT GREATER THAN 1/8" PER FOOT. CONTRACTOR IS TO VERIFY ALL EXIST. CONDITIONS & DIMENSIONS PRIOR TO WORK. DIMENSIONS INDICATED ON THESE DRAWINGS ARE DERIVED FROM THE ORIGINAL BUILDING DRAWINGS AND FROM LIMITED FIELD OBSERVATIONS. THE DIMENSIONS ARE A NOMINAL REPRESENTATION OF THE BUILDING. LOCAL CONDITIONS MAY VARY. THE CONTRACTOR WILL BE RESPONSIBLE FOR FIELD VERIFYING AND FITTING NEW CONSTRUCTION TO THE ACTUAL BUILDING DIMENSIONS. SIGNIFICANT DIMENSION DEVIATIONS ARE TO BE REPORTED TO THE ARCHITECT PRIOR TO COMPLETING WORK.
- MATCH FINISHED WALL OR PARTITION THICKNESS WHERE NEW WALLS OR PARTITIONS OCCUR IN LINE WITH EXISTING WALLS.
- WHERE NEW FLOOR CONSTRUCTION MATERIALS MEET EXIST. CONDITIONS, PROTECT ADJACENT ORIGINAL FINISHES. NEW AND EXIST. FLOOR FINISHES ARE TO BE INSTALLED AT THE SAME ELEVATION.
- WHERE EXIST. PIPING / CONDUIT IS REMOVED, HOLES ARE TO BE PATCHED TO MATCH EXIST. ADJACENT MATERIALS. PROVIDE FIRE RATED OR ACCOUSTICAL SEALANT WHERE INDICATED.
- TYPICAL INTERIOR DIMENSIONS ARE TO CENTERLINE OF STUD.
- NEGATIVE PRESSURE ROOMS INDICATED W/ (-) SHALL RECEIVE CEILING TILE HOLD DOWN CLIPS.

### KEYED NOTES

- SPECIMEN PASS-THROUGH. SEE DETAIL 6/1-A21.
- 4" EXPANSION JOINT & COVER.
- 2" EXPANSION JOINT & COVER.
- TRENCH DRAIN. RE: MECH.
- FEC 1: SURFACE MOUNTED FEC.
- FEC 2: SEMI-RECESSED FEC.
- FEC 3: RECESSED FEC.
- WITHIN HATCHED AREA - LEVEL EXISTING EXTERIOR FLOOR TO MATCH EXISTING LEVEL 1.
- 42" STEEL GUARDRAIL - NOT NEEDED IF THERE IS NO SPACE BETWEEN GRATE AND DUCTS. COORDINATE WITH MECH.
- 42" HIGH STEEL GUARDRAIL TO MATCH EXISTING. RE: 11/1-A15.
- METAL BAR GRATE FLOOR. RE: 9/1-A27.
- DRINKING FOUNTAIN - RE: MECHANICAL SPEC.
- NOT USED.
- EXISTING UTILITY VAULT AND MANHOLE COVER TO REMAIN. RAISE MANHOLE AS REQUIRED TO MAKE IT LEVEL WITH AMBULANCE GARAGE FLOOR. RE: CIVIL.
- INFILL EXISTING WINDOW TO MATCH ADJOINING FINISHES.
- MED GAS ZONE VALVE CABINET.
- AREA ALARM PANEL.
- 3 1/2" X 18" X 35" 5,000 PSI CONCRETE SPLASH BLOCK - COLOR: GRAY @ ALL SCUPPER LOCATIONS



<b>HEERY</b> design Heery International Inc. 125 South Dubuque Street, Suite 500, Iowa City, IA 52240-4003 319.354.4700		project number <b>11-25503</b>	Drawing Title <b>ARCHITECTURAL DIMENSION PLAN LEVEL 1</b>	Project Title <b>EXPAND BLDG. 1 FOR PAC AMBULATORY CARE &amp; RADIOLOGY</b>	Date <b>12/15/2014</b>
<b>CONSTRUCTION DOCUMENTS</b>		Building No. <b>BLDG 1</b>	Checked 	Drawn <b>RD</b>	Project No. <b>636-201</b>
		Location <b>ICVA HEALTH CARE SYSTEM</b>			DRAWING NO. <b>1-A6</b>