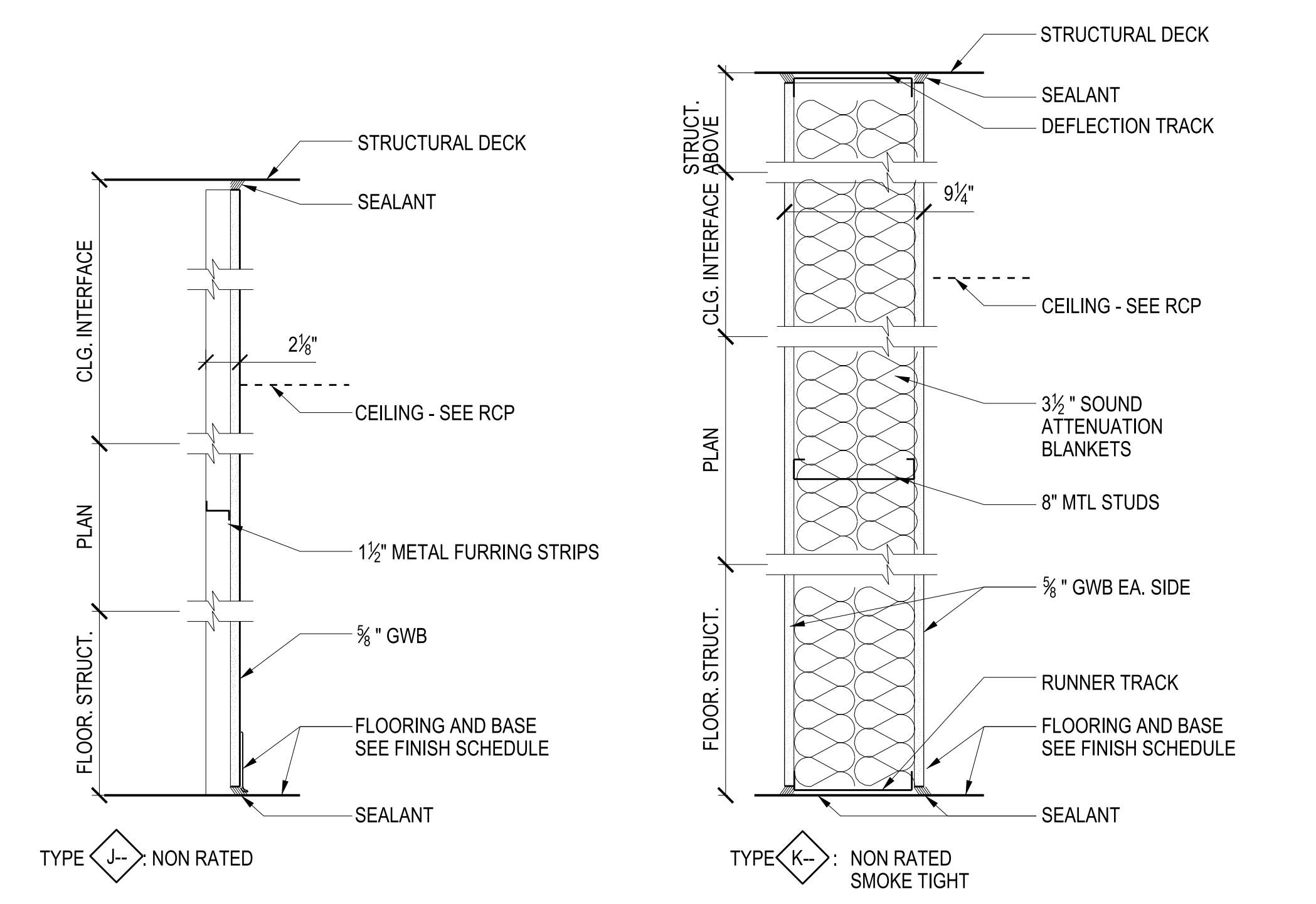
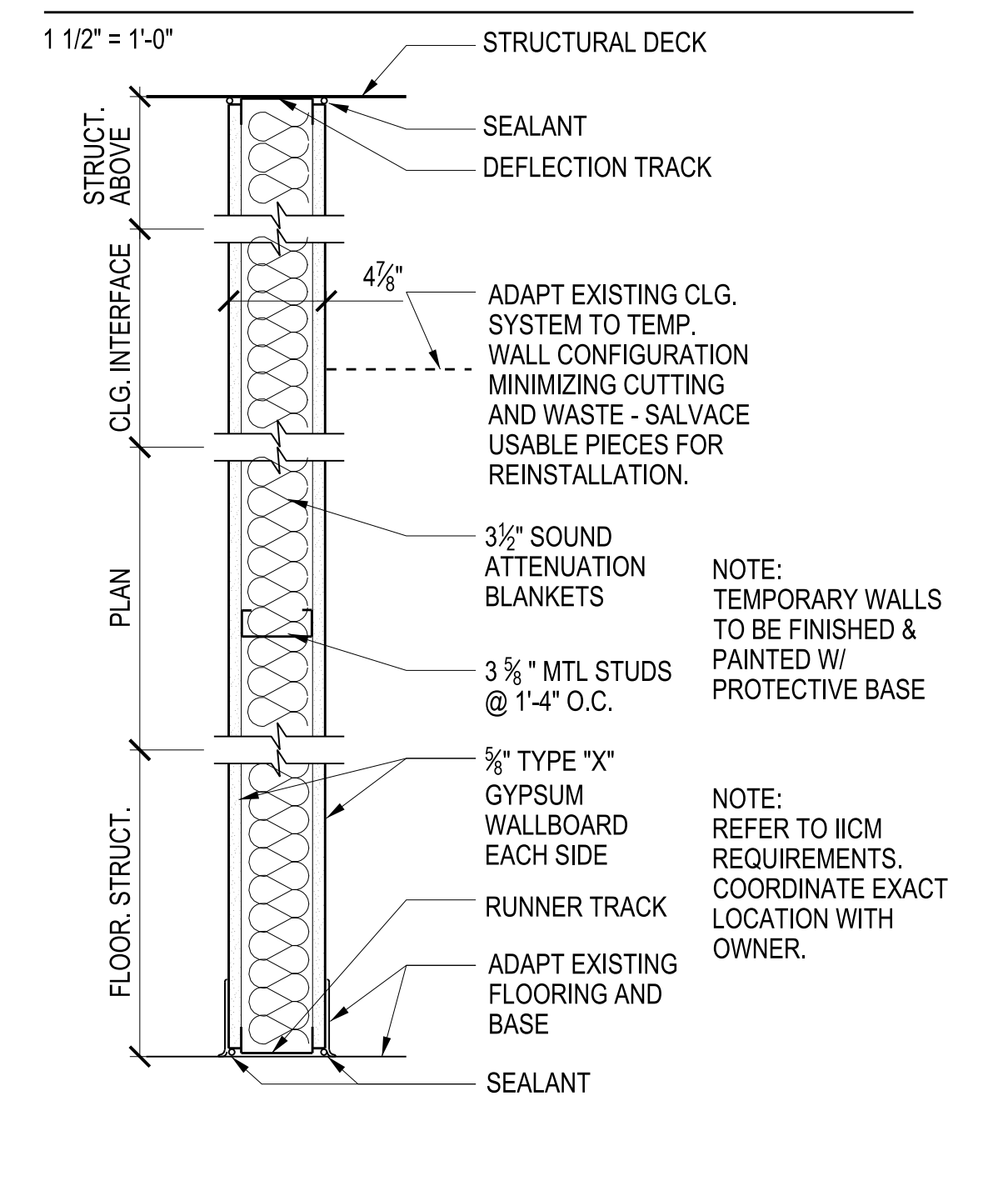
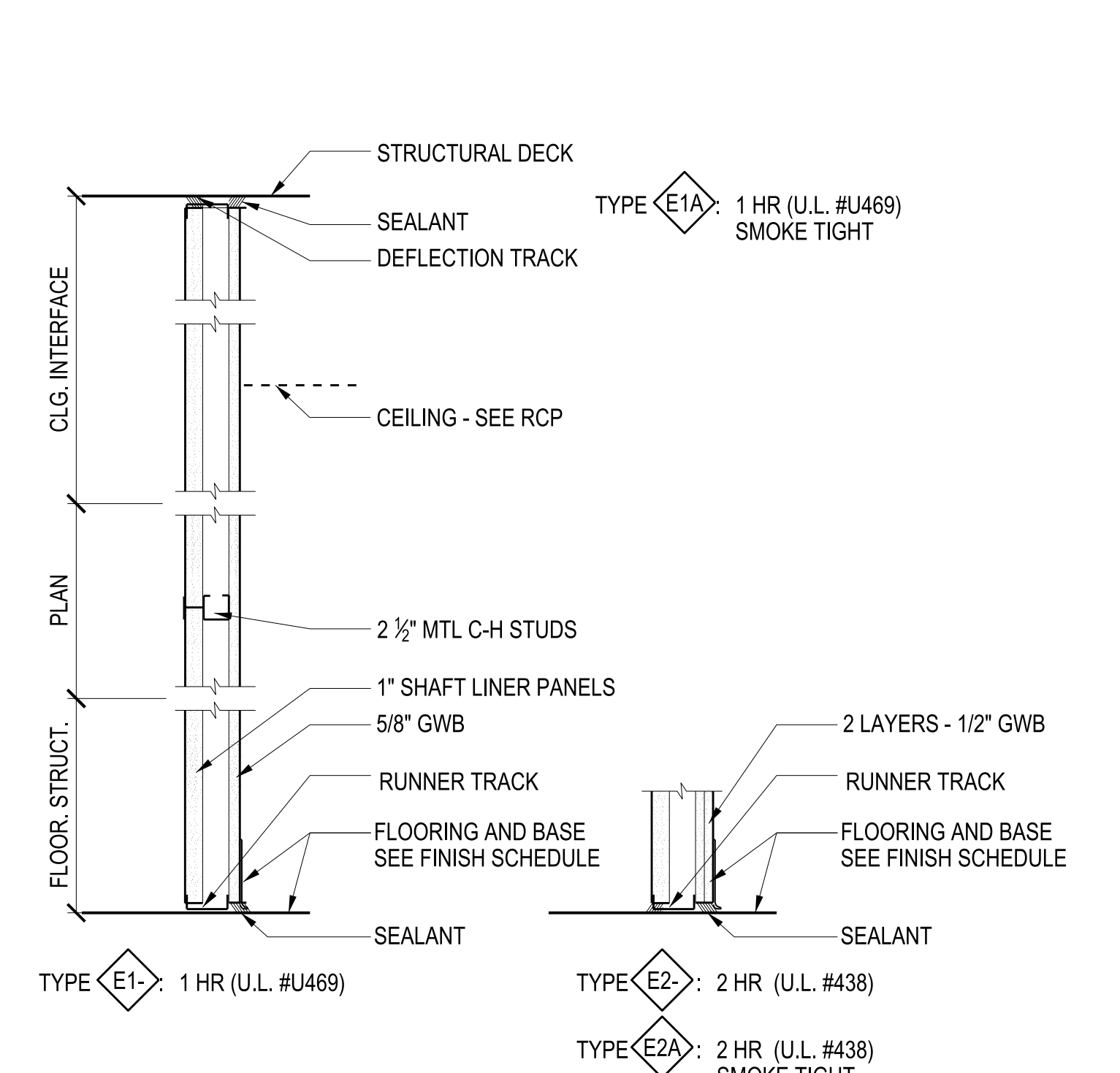
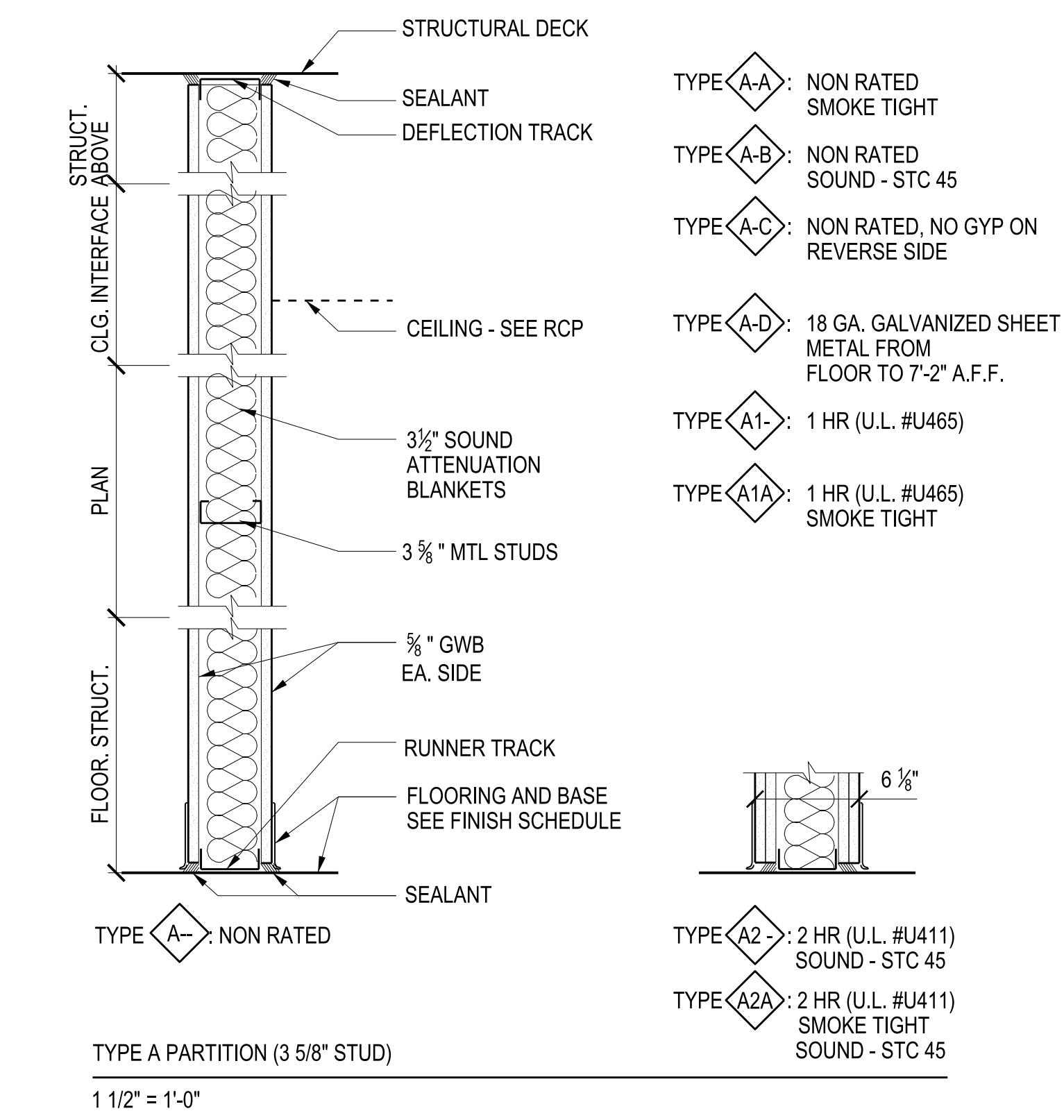
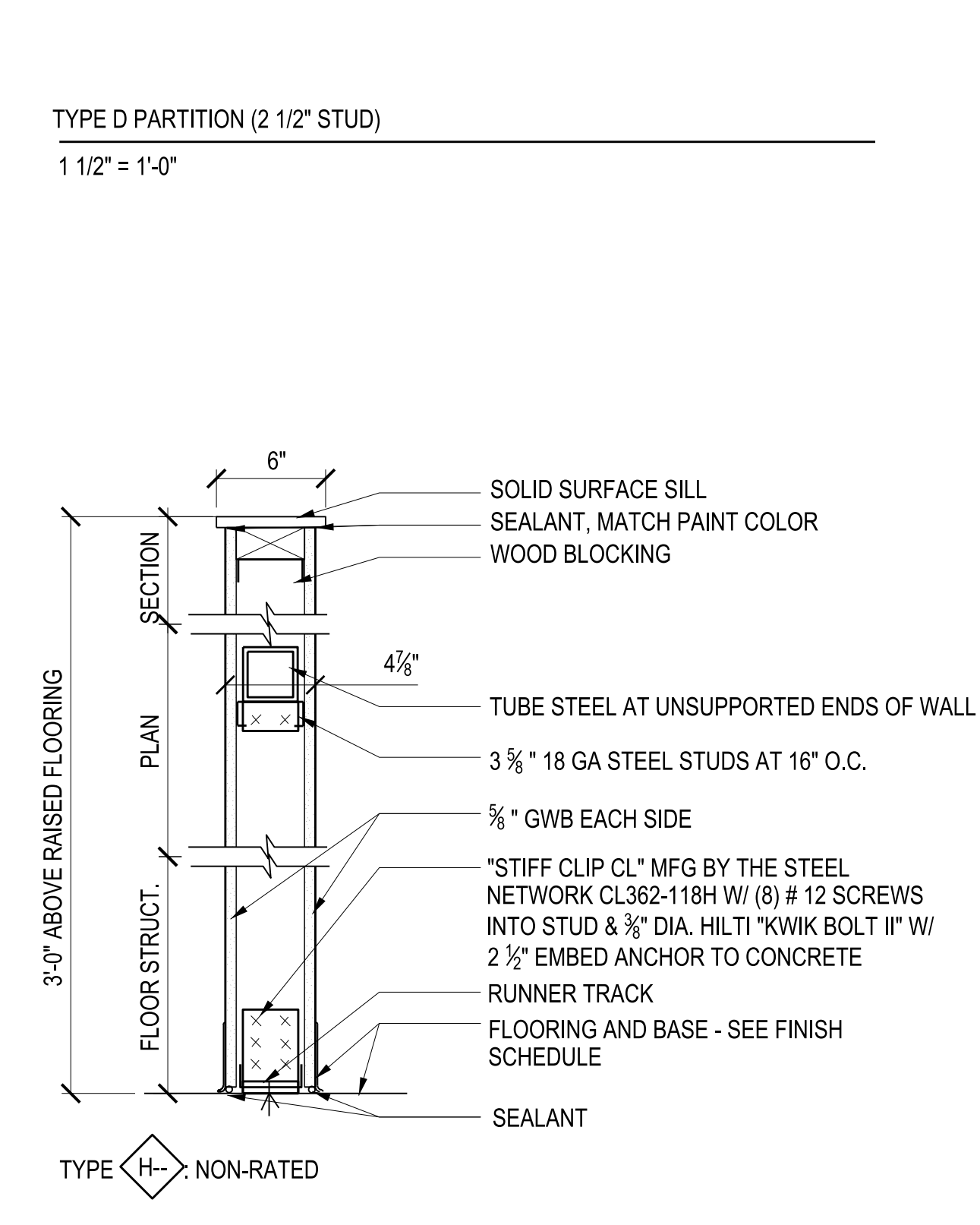
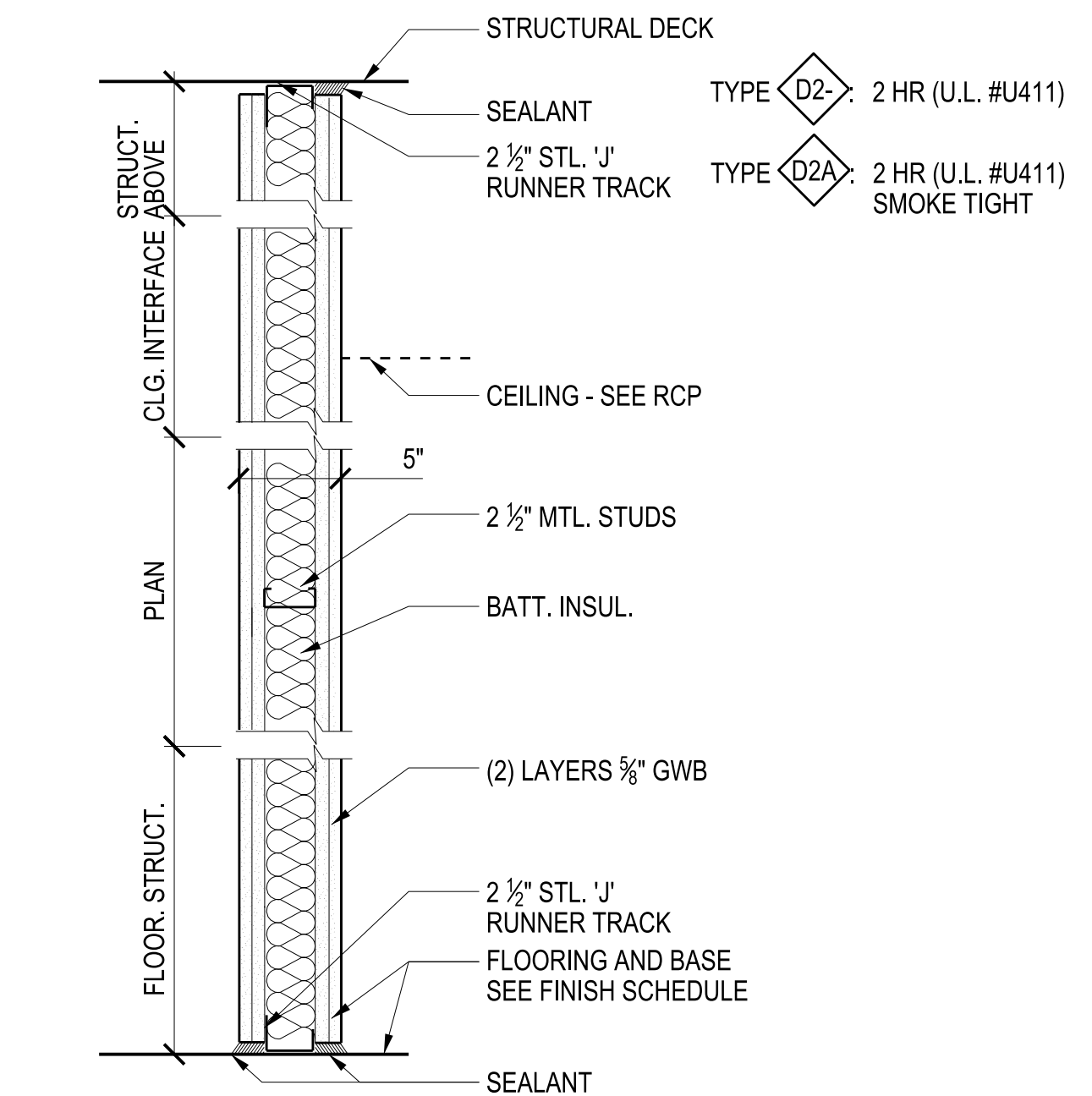
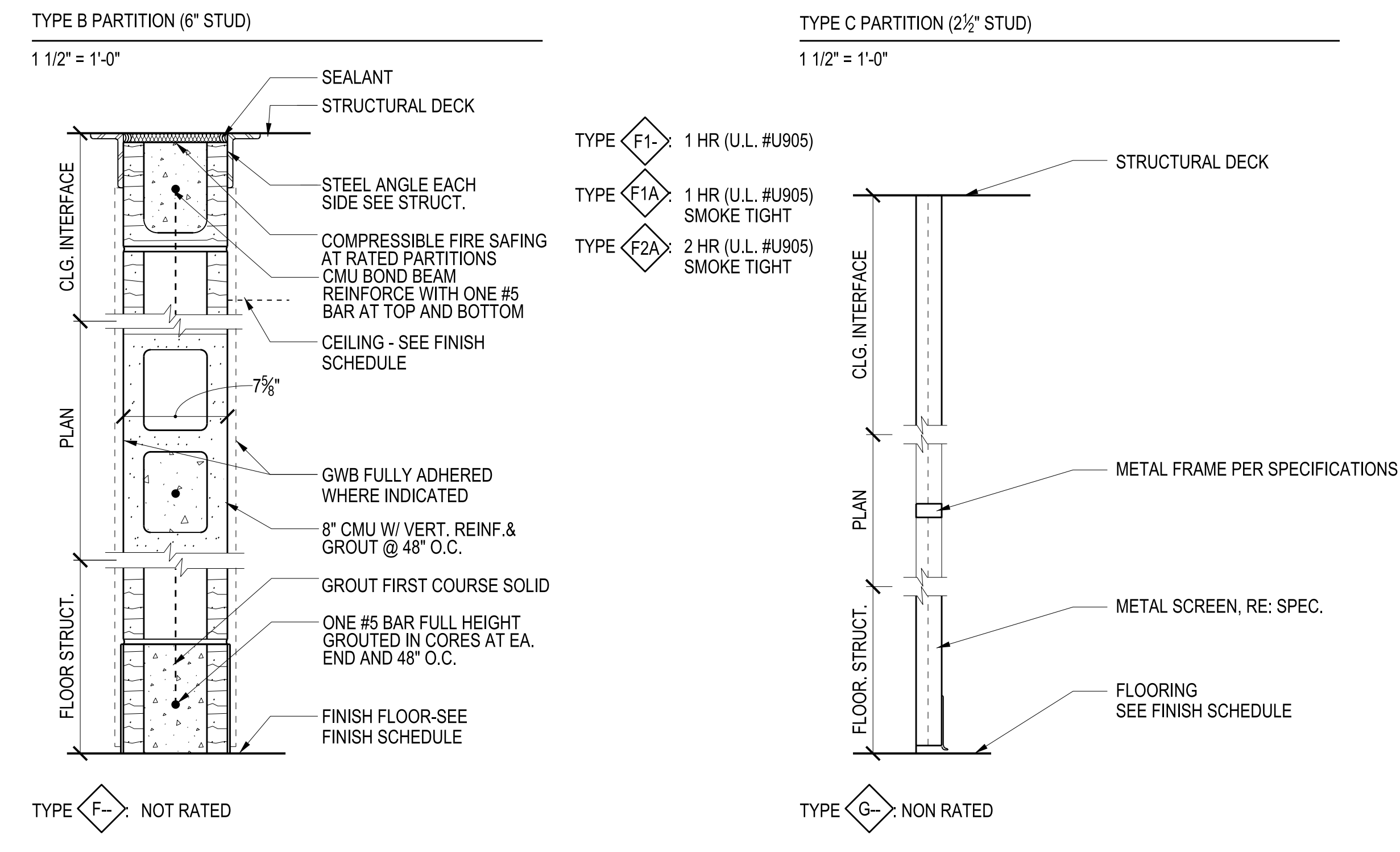
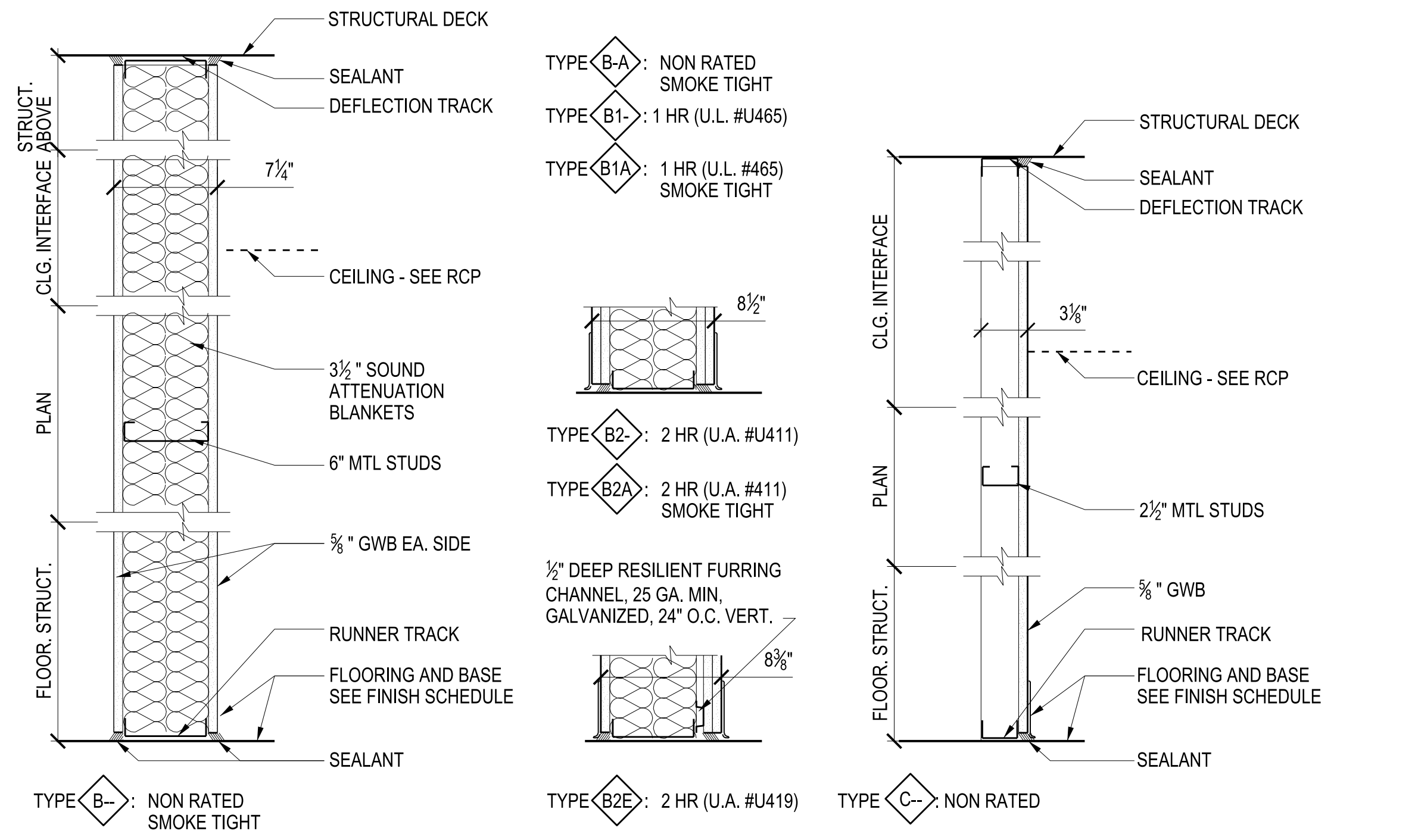
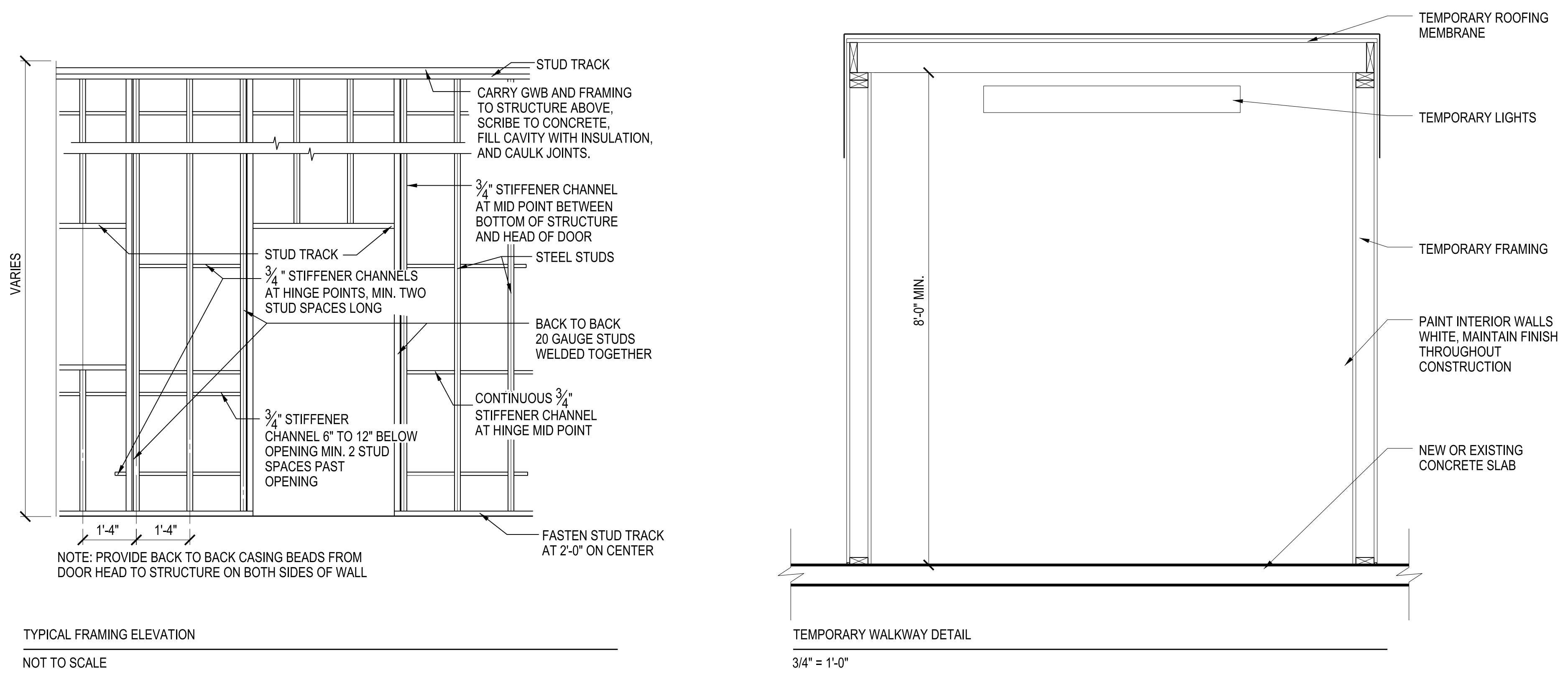


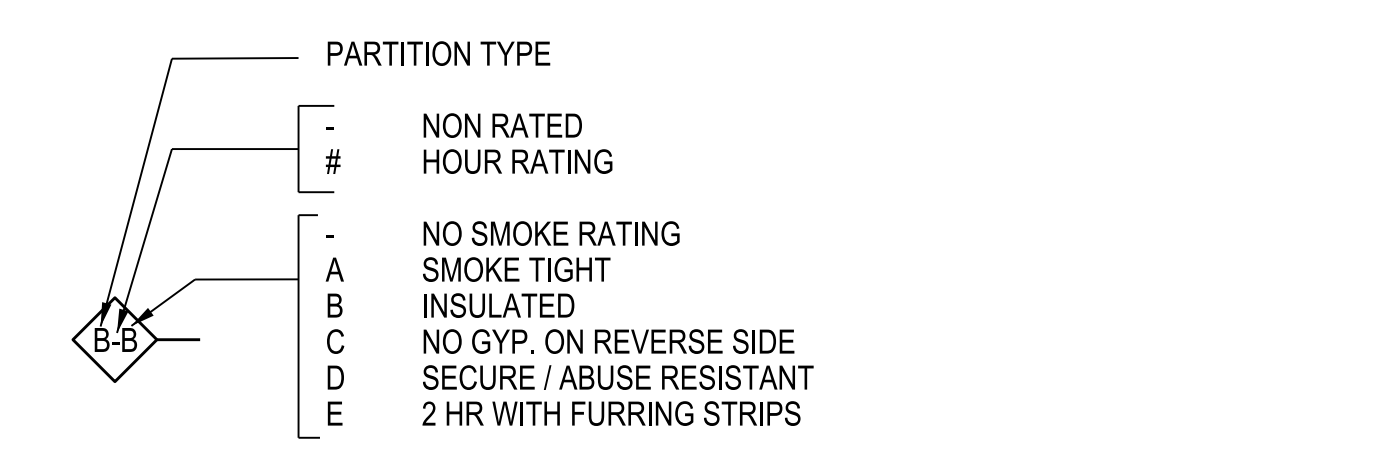
three inches = one foot
one and one-half inches = one foot
one inch = one foot
three-quarters inch = one foot
one-half inch = one foot
three-eighths inch = one foot
one-quarter inch = one foot
one-eighth inch = one foot



PARTITION TYPE NOTES

- REFER TO "FIRE RESISTANCE DESIGN MANUAL", LATEST EDITION PUBLISHED BY THE GYPSUM ASSOCIATION FOR ADDITIONAL INFORMATION. THE DESIGN MANUAL'S GENERAL EXPLANATORY NOTES PERMIT MODIFICATIONS AND SUBSTITUTIONS WITHOUT DEGRADING THE FIRE RESISTANT RATING, RESULTING FROM INCREASING STUD DEPTHS, STUD GAUGES, WALLBOARD THICKNESS, NUMBER OF LAYERS, AND CHASE WALL DIMENSIONS.
- MEET OR EXCEED THE PARTITION TYPE REQUIREMENTS INDICATED.
- REFER TO THE ARCHITECTURAL "FLOOR PLANS" FOR PARTITION TYPE LOCATIONS.
- PROVIDE BLOCKING AND SUPPORT FOR EQUIPMENT AND ACCESSORIES WHICH REQUIRE INTERNAL REINFORCEMENT ON PARTITION WALLS. REVIEW EQUIPMENT LOCATED ON ALL PLANS AND EQUIPMENT FOUND ON SCHEDULE ON SHEET 1-A30.
- REFER TO TYPICAL PARTITION DETAILS FOR CONFIGURATIONS AT INTERFACE WITH VARIOUS STRUCTURAL COMPONENTS.
- GYPSUM BOARD JOINTS ARE TO BE FINISHED DOWN TO FLOOR LEVEL AND UP TO SLAB/STRUCTURAL DECK ABOVE.
- FOR RATED WALLS ALL EXPOSED SCREWS SHALL BE COVERED WITH JOINT COMPOUND.
- ALL WALLS WITH RATINGS ARE ASSUMED TO BE NON-BEARING. U.O.N.
- IT IS ACCEPTABLE TO INCREASE GAUGE OR DIMENSION OF METAL STUDS FOR RATED WALLS AND STILL MAINTAIN LISTED RATING. INCREASES IN GYP THICKNESS IS ALSO ACCEPTABLE AS PROVIDED SCREW LENGTH IS ALSO INCREASED ACCORDINGLY.
- WHEN USING A RATED WALL, FOLLOW ALL DETAILS OF THE LISTED ASSEMBLY. NOT ALL OF THESE DETAILS ARE INDICATED ON THIS SHEET.
- ALL PARTITIONS TO BE TYPE <A> U.O.N.
- FULL HEIGHT WALLS WILL BE RUN FROM THE STRUCTURE FLOOR SLAB TO GWB CEIL. ABOVE. THESE WALLS SHALL NOT BE INTERRUPTED SYSTEMS OR SUSPENDED (OR OTHER) CEILING SYSTEMS.
- ALL STUDS WILL BE 20 GA. MIN. U.O.N.
- SEAL THRU WALL CABLE TRAYS AND PENETRATIONS AT SOUND RATED WALLS.
- UNDERCUT OUTER LAYER OF GWB 1/2" AT BASE AND SEAL W/ MOISTURE RESISTANT SEALANT THAT MEETS FIRE RATING FOR WALL.
- PROVIDE WATER RESISTANT GWB AT AREAS SCHEDULED TO RECEIVE EPOXY PAINT AND AT AREAS NEAR SINKS AND ICE MACHINES.
- REFER TO STRUCTURAL DRAWINGS FOR STUD ATTACHMENT TO STRUCTURE.

PARTITION TYPE KEY



Revisions	Date	Revisions	Date	Revisions	Date

Heery International Inc.
125 South Dubuque Street,
Suite 500,
Iowa City, IA 52240-4003
319.354.4700

project number
11-25503

Drawing Title
INTERIOR PARTITION TYPES

CONSTRUCTION DOCUMENTS

Project Title
EXPAND BLDG. 1 FOR PACT AMBULATORY CARE & RADIOLOGY

Building No.
BLDG 1

Location
ICVA HEALTH CARE SYSTEM

Date
12/15/2014

Project No.
636-201

DRAWING NO.
1-A20

Office of Facilities

Department of Veterans Affairs