

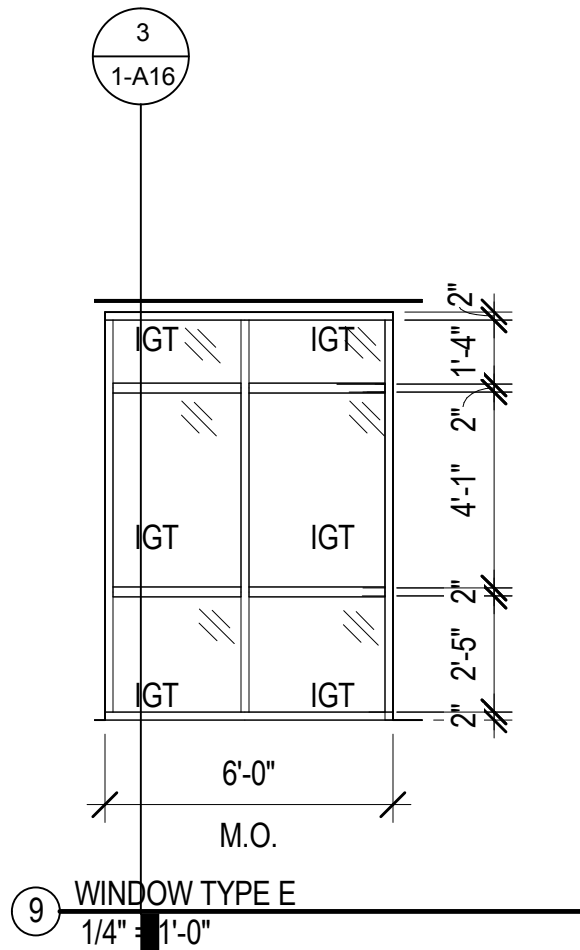
0
8
6
2
0
6
2
6
0
4
0
4
0
8
4
0
16
0
4
8
one-eighth inch = one foot
one-quarter inch = one foot
three-eighths inch = one foot
one-half inch = one foot
one inch = one foot
three-quarters inch = one foot
one and one-half inches = one foot
two inches = one foot
three inches = one foot
four inches = one foot
five inches = one foot
six inches = one foot
seven inches = one foot
eight inches = one foot
nine inches = one foot
ten inches = one foot
eleven inches = one foot
twelve inches = one foot
thirteen inches = one foot
fourteen inches = one foot
fifteen inches = one foot
sixteen inches = one foot
seventeen inches = one foot
eighteen inches = one foot
nineteen inches = one foot
twenty inches = one foot
twenty-one inches = one foot
twenty-two inches = one foot
twenty-three inches = one foot
twenty-four inches = one foot
twenty-five inches = one foot
twenty-six inches = one foot
twenty-seven inches = one foot
twenty-eight inches = one foot
twenty-nine inches = one foot
thirty inches = one foot
thirty-one inches = one foot
thirty-two inches = one foot
thirty-three inches = one foot
thirty-four inches = one foot
thirty-five inches = one foot
thirty-six inches = one foot
thirty-seven inches = one foot
thirty-eight inches = one foot
thirty-nine inches = one foot
forty inches = one foot
forty-one inches = one foot
forty-two inches = one foot
forty-three inches = one foot
forty-four inches = one foot
forty-five inches = one foot
forty-six inches = one foot
forty-seven inches = one foot
forty-eight inches = one foot
forty-nine inches = one foot
fifty inches = one foot
fifty-one inches = one foot
fifty-two inches = one foot
fifty-three inches = one foot
fifty-four inches = one foot
fifty-five inches = one foot
fifty-six inches = one foot
fifty-seven inches = one foot
fifty-eight inches = one foot
fifty-nine inches = one foot
sixty inches = one foot
sixty-one inches = one foot
sixty-two inches = one foot
sixty-three inches = one foot
sixty-four inches = one foot
sixty-five inches = one foot
sixty-six inches = one foot
sixty-seven inches = one foot
sixty-eight inches = one foot
sixty-nine inches = one foot
seventy inches = one foot
seventy-one inches = one foot
seventy-two inches = one foot
seventy-three inches = one foot
seventy-four inches = one foot
seventy-five inches = one foot
seventy-six inches = one foot
seventy-seven inches = one foot
seventy-eight inches = one foot
seventy-nine inches = one foot
eighty inches = one foot
eighty-one inches = one foot
eighty-two inches = one foot
eighty-three inches = one foot
eighty-four inches = one foot
eighty-five inches = one foot
eighty-six inches = one foot
eighty-seven inches = one foot
eighty-eight inches = one foot
eighty-nine inches = one foot
ninety inches = one foot
ninety-one inches = one foot
ninety-two inches = one foot
ninety-three inches = one foot
ninety-four inches = one foot
ninety-five inches = one foot
ninety-six inches = one foot
ninety-seven inches = one foot
ninety-eight inches = one foot
ninety-nine inches = one foot
one hundred inches = one foot

1 WINDOW TYPE A NOT USED
1/4" = 1'-0"

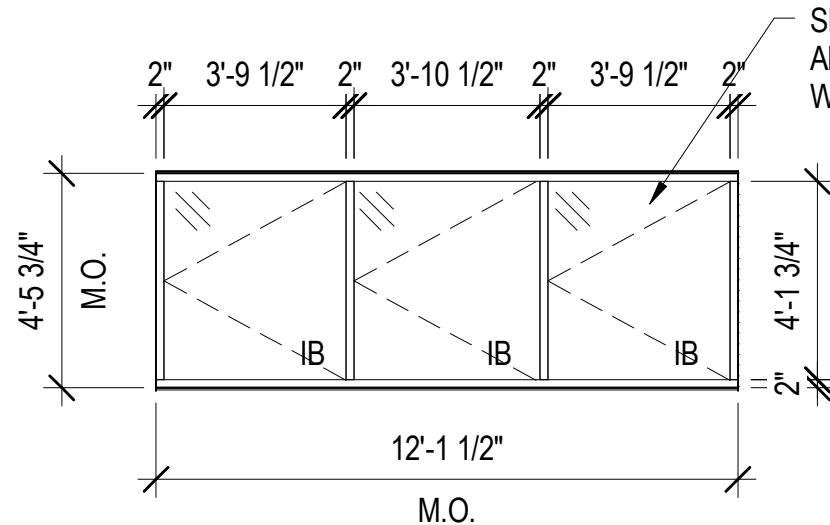
2 WINDOW TYPE B NOT USE
1/4" = 1'-0"

3 WINDOW TYPE C NOT USED
1/4" = 1'-0"

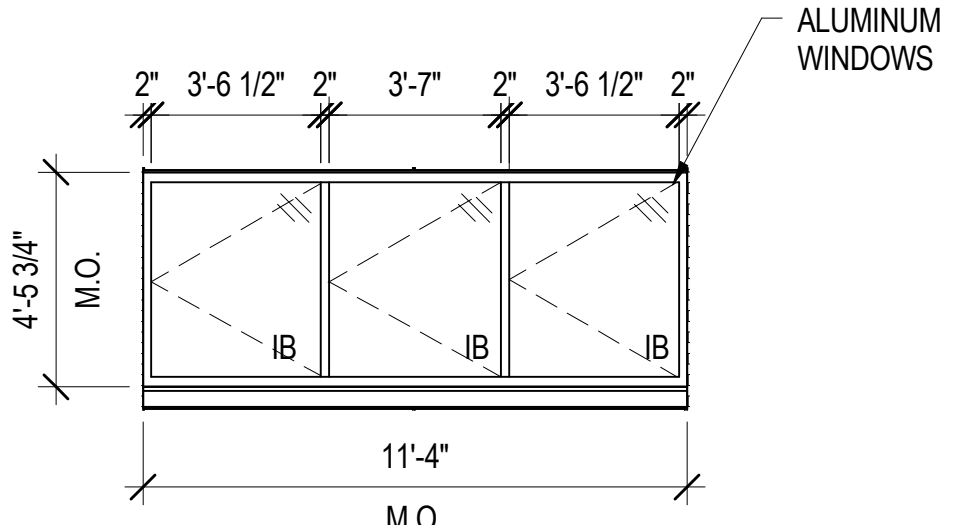
4 WINDOW TYPE D NOT USED
1/4" = 1'-0"



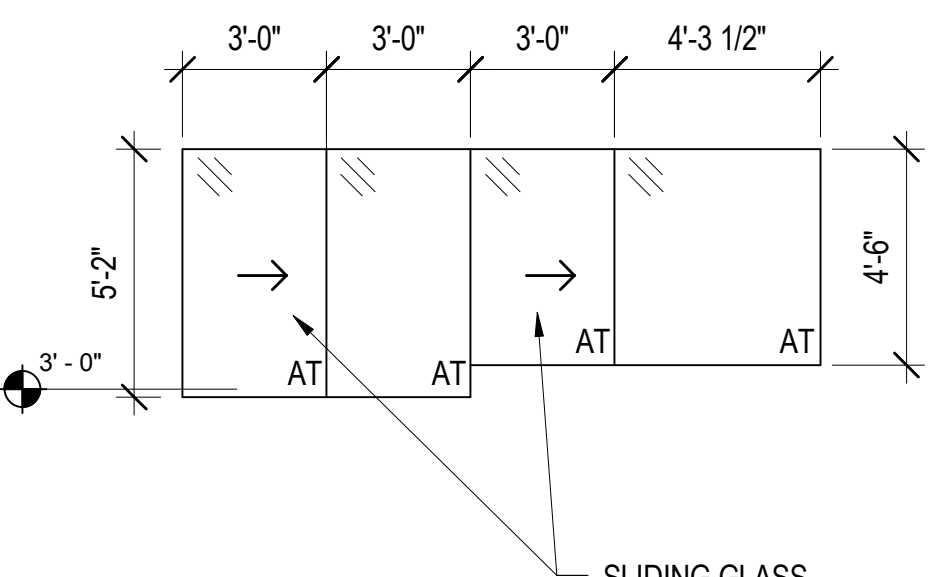
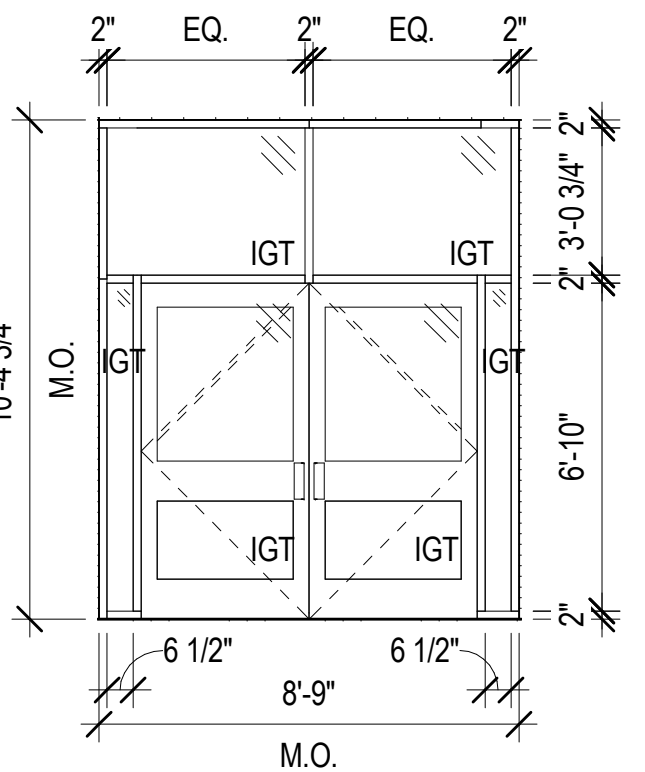
10 WINDOW TYPE F
1/4" = 1'-0"



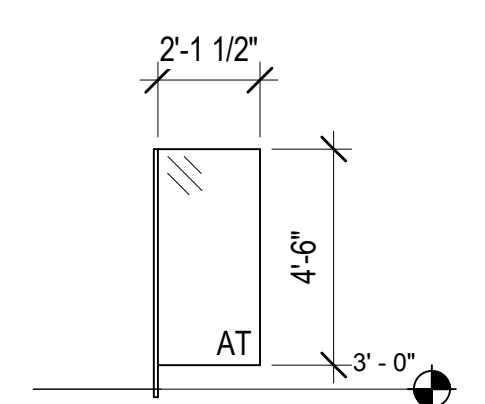
7 WINDOW TYPE G
1/4" = 1'-0"



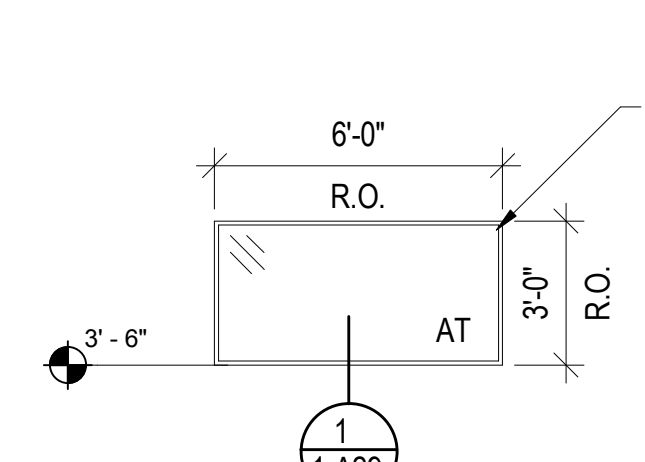
8 WINDOW TYPE H
1/4" = 1'-0"



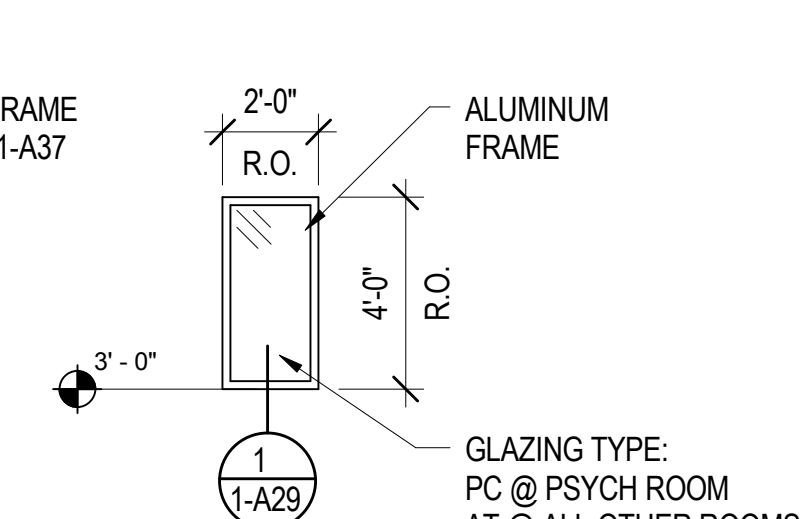
12 WINDOW TYPE L
1/4" = 1'-0"



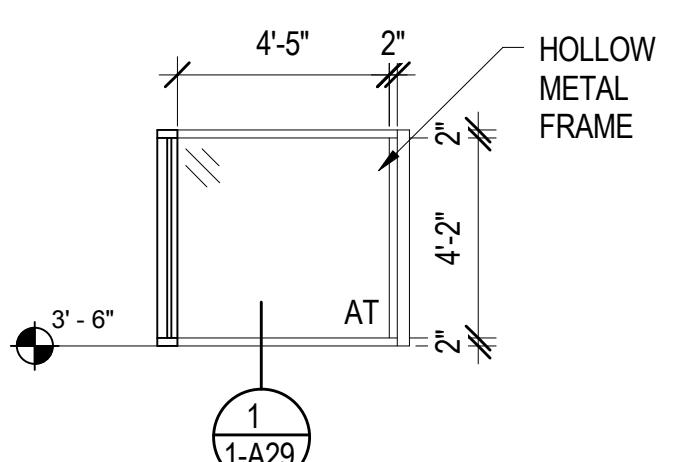
13 WINDOW TYPE M
1/4" = 1'-0"



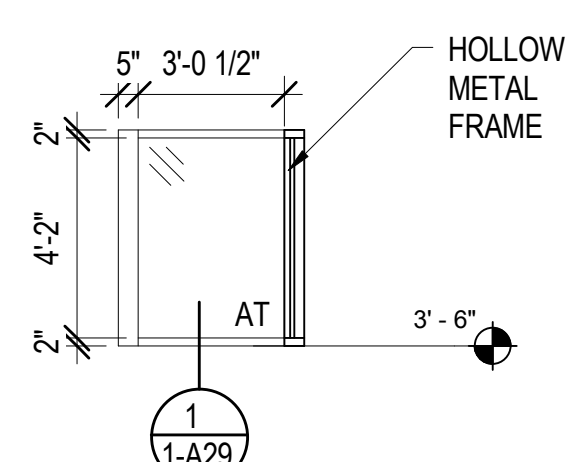
14 WINDOW TYPE N
1/4" = 1'-0"



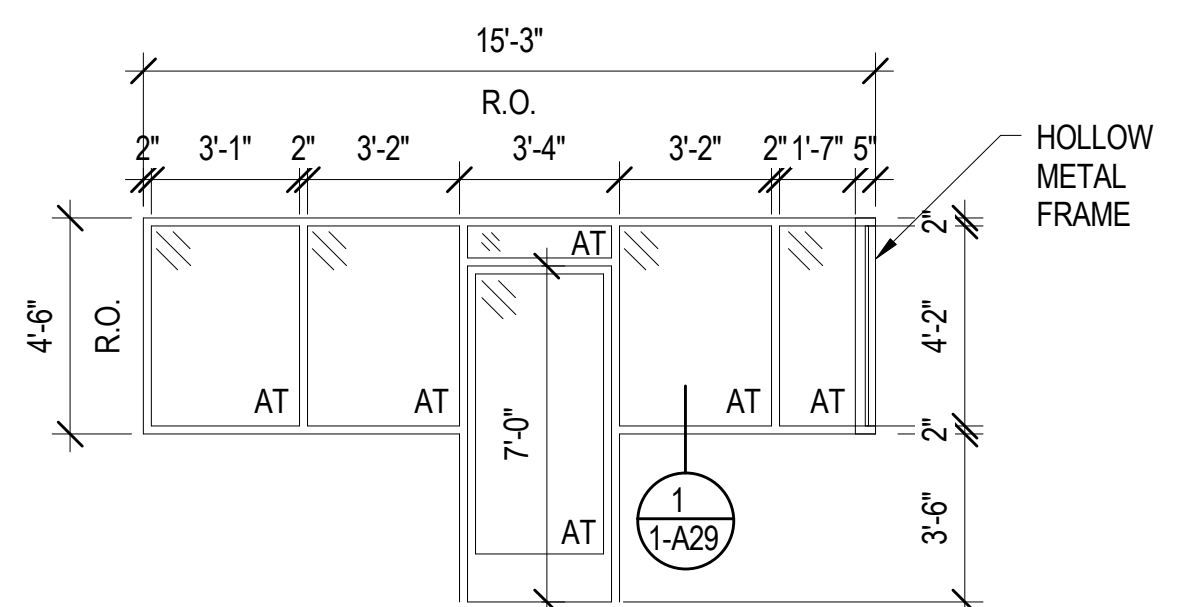
15 WINDOW TYPE O
1/4" = 1'-0"



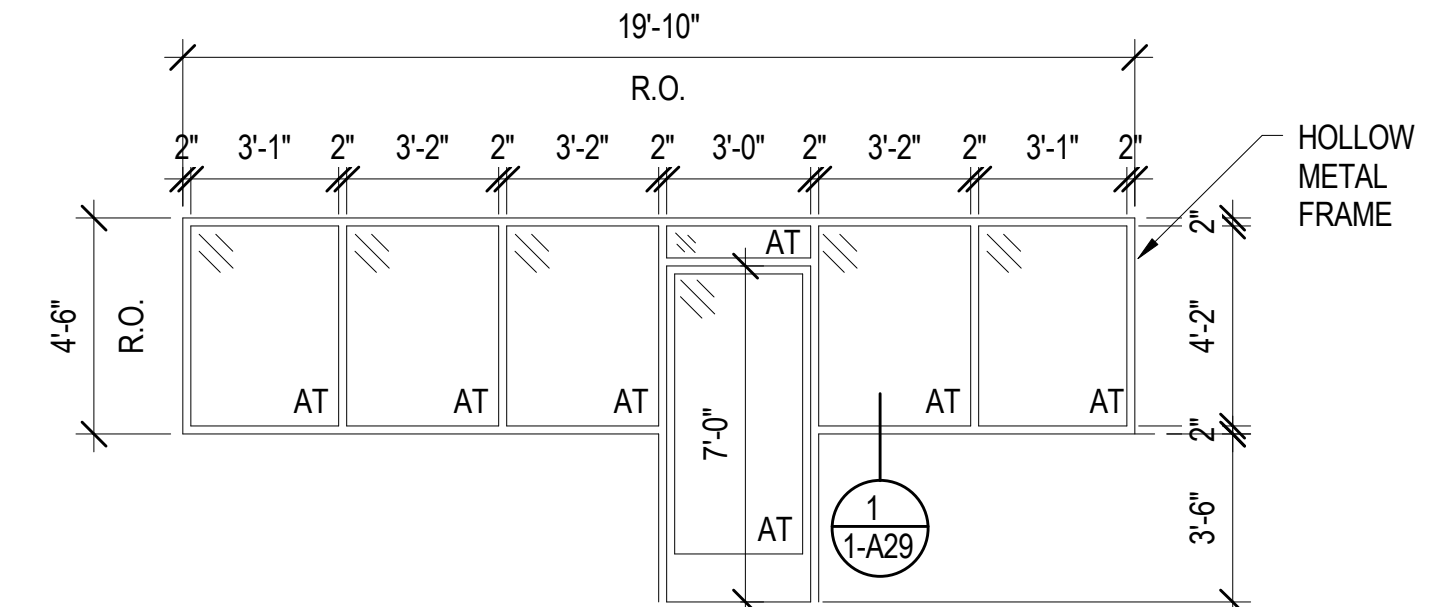
16 WINDOW TYPE P - NOT USED
1/4" = 1'-0"



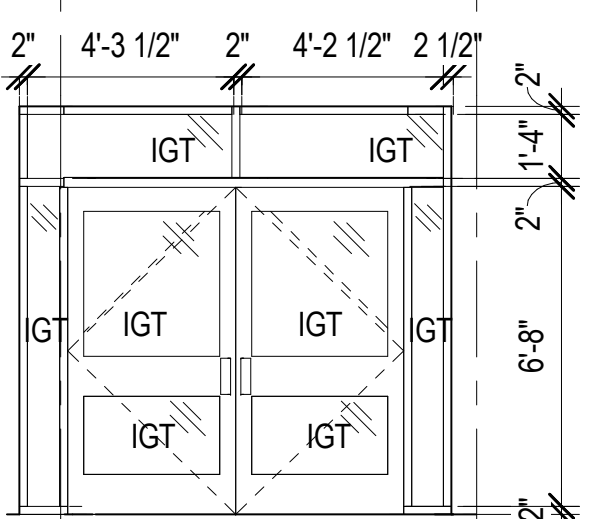
17 WINDOW TYPE Q
1/4" = 1'-0"



19 WINDOW TYPE S
1/4" = 1'-0"



21 WINDOW TYPE U
1/4" = 1'-0"



22 WINDOW TYPE V
1/4" = 1'-0"

GENERAL NOTES:

- FOR EXTERIOR OPENINGS, ACTUAL WINDOW SIZE IS 3/4" LESS THAN THE INDICATED MASONRY OPENING DIMENSION.
- GLAZING TYPES
AT -- CLEAR GLASS, TEMPERED 1/4"
IB -- INSULATED GLASS, TEMPERED, WITH INTEGRAL BLINDS
IGT -- INSULATED GLASS, TEMPERED
PC -- POLYCARBONATE GLAZING
RP -- INSULATED GLASS WITH INTEGRAL BLINDS IN REMOVABLE PANELS
S -- INSULATED GLASS WITH SPANDREL FILM ON INSIDE

HEERY design
Heery International Inc.
125 South Dubuque Street,
Suite 500,
Iowa City, IA 52240-4003
319.354.4700

project number
11-25503

Drawing Title
WINDOW ELEVATIONS

CONSTRUCTION DOCUMENTS

Project Title
EXPAND BLDG. 1 FOR PAC
AMBULATORY CARE, RADIOLOGY

Building No.
BLDG 1

Location
ICVA HEALTH CARE SYSTEM

Date
12/15/2014

Project No.
636-201

DRAWING NO.
1-A30



Department of
Veterans Affairs