



ASBESTOS CONTAINING BUILDING MATERIAL REPORT BUILDING 22

**Bay Pines VA Medical Center
10000 Bay Pines Boulevard
Bay Pines, Florida**

Project No. 2009011.001

July 31, 2009



**Mabbett & Associates, Inc.
Environmental Consultants & Engineers**

*5 Alfred Circle
Bedford, MA 01730-2318
Telephone: (781) 275-6050
Toll Free: (800) 877-6050
Facsimile: (781) 275-5651*

info@mabbett.com

www.mabbett.com

© 2009, Mabbett & Associates, Inc.

ACKNOWLEDGMENT

This Asbestos Building Survey/Analytical Report was prepared for the Department of Veteran Affairs Medical Center, Bay Pines, Florida in anticipation of potential future building renovations and in accordance with an established scope of work as defined in Contract Number VA248-P-1114. The information presented herein is based on the facts and information conveyed to or received by M&A during the preparation of this report. If any of the information provided to M&A that was used in preparing this plan is incorrect, incomplete, or subject to change, M&A would wish to alter its opinion(s) accordingly. In addition, the professional opinions and information contained in this report are based solely on the requirements of the applicable regulations and technical data as known to M&A as of the date of this report and considered applicable to this report.

This report was prepared by the following Mabbett & Associates, Inc. personnel:



Jody Freitas
Environmental Engineer



Robert K. McKinley, CIH
Director of Industrial Hygiene

This report has been reviewed and approved by:

BY:



Angelo Caparelli, MBA, B.Sc., CSP, FLAC
Florida Licensed Asbestos Consultant (AX55)
Certified Asbestos Inspector EPA# 101796

TABLE OF CONTENTS

Description	Page
1.0 INTRODUCTION & EXECUTIVE SUMMARY	1
2.0 BUILDING DESCRIPTION	1
3.0 SAMPLING METHODOLOGY	1
4.0 ANALYTICAL METHODOLOGY	2
5.0 SUMMARY OF ASBESTOS CONTAINING MATERIALS (ACM) FINDINGS	2
6.0 LIMITATIONS	4
7.0 CLOSING REMARKS	4

Table Table of ACM Results

Photos Photos of Positive Representative Samples

Drawings 18" x 32" Floor Plan (with ACM survey information)

Appendices/Back-up Data

Appendix A	Laboratory Certifications/Asbestos Laboratory Analysis Reports
Appendix B	Inspector Field Data Sheets

1.0 INTRODUCTION & EXECUTIVE SUMMARY

Mabbett and Associates, Inc. (M&A) with ECS Florida, LLC (ECS) as a sub-contractor performed a pre-renovation asbestos-containing materials (ACM) inspection survey of the VA Medical Center located at 10000 Bay Pines Boulevard, Bay Pines, Florida under contract VA248-P-1114. Site survey work was performed during June and July, 2009, by appropriately credentialed personnel as required. There were 79 samples collected during the course of the survey phase. Samples collected were analyzed by a certified laboratory for asbestos content by polarized light microscopy (PLM) using stop positive methodology. Materials consisting of multiple layers were analyzed separately. The results of the survey indicated the presence of asbestos in the building.

This building report consists of a summary of findings, floor plans indicating sample locations and findings information, detailed analytical findings for the specific surveyed building, photos of identified ACM positive homogenous samples; and Appendices/Back-up Data, including laboratory results and field data sheets.

2.0 BUILDING DESCRIPTION

According to information provided by VAMC Bay Pines and observations made during the field survey, Building 22 was a 4-story Administration Building built in 1938-1939. Building 22 was approximately 87,987 square feet (ft²).

3.0 SAMPLING METHODOLOGY

Samples of suspected ACM including floor tile, mastic, plaster, etc. were collected from accessible building locations according to the scope of work, Pinellas County Code Chapter 58, National Emission Standards for Hazardous Air Pollutants (NESHAP) 40 CFR Part 61 and other applicable state and Federal guidelines. Bulk material sampling was conducted according to the following sampling plan:

a) Surfacing material:

- (1) At least three bulk samples shall be collected from each homogeneous area that is 1,000 ft² or less.
- (2) At least five bulk samples shall be collected from each homogeneous area that is greater than 1,000 ft² but less than or equal to 5,000 ft².
- (3) At least seven bulk samples shall be collected from each homogeneous area that is greater than 5,000 ft².

(b) Thermal system insulation:

- (1) At least three bulk samples from each homogeneous area of thermal system insulation
- (2) At least one bulk sample from each homogeneous area of patched area of thermal system insulation.
- (3) Sufficient samples from elbows and fittings to determine if it contains ACM.
- (4) Bulk samples were not collected from any homogeneous area where the accredited inspector determined that the thermal system insulation is fiberglass, foam glass, rubber, or other non-ACBM.

(c) Miscellaneous material:

- (1) At least one bulk sample shall be collected from each homogeneous area that is less than 100 ft²
- (2) At least three bulk samples shall be collected from each homogeneous area that is greater than 100 ft²

A visual screening inspection was conducted by Florida Licensed Asbestos Inspectors throughout the entire Building 22 to determine the locations of suspect ACM. Only areas that were accessible during the field work phase were inspected. Many offices, patient care areas, and other sensitive areas were not accessible by the survey teams. Any suspect ACM that may be present within the walls, above inaccessible hard ceilings, or in other inaccessible locations, that was not inspected should be assumed to contain asbestos if discovered during any renovation process or until otherwise verified.

4.0 ANALYTICAL METHODOLOGY

The bulk asbestos samples collected including available layers were analyzed by polarized light microscopy (PLM). Sampling results are summarized in the enclosed Building Results Table. The PLM analytical protocol requires each layer of the sample to be analyzed separately. The quantity of analyses will vary based on the number of layers in a sample and whether a "positive stop" is employed. Note: when one sample of a homogeneous area is positive, the remainder of the samples was not analyzed because the entire homogeneous area is considered positive, as indicated on the results tables and drawings.

Samples were submitted to EMSL Analytical, Inc., of Beltsville, MD for PLM analysis of bulk materials via EPA 600/R-93/116 Method. PLM analysis was conducted in conjunction with dispersion staining as outlined by 40 CFR 63, Subpart F dated January 1987. EMSL Analytical is accredited by the American Industrial Hygiene Association (AIHA) and participates in the National Voluntary Laboratory Accreditation Program (NVLAP License 101151-0). Copies of the laboratory accreditations are included in Appendix A.

For purposes of this report and consistent with county and Federal regulations, asbestos containing materials are any materials containing more than one percent (1%) asbestos as determined by PLM.

5.0 SUMMARY OF ASBESTOS CONTAINING MATERIALS (ACM) FINDINGS

A table with all available sample results for this building is enclosed with a summary of positive sample locations below. Where a sample was found positive, a representative photo of the material is provided in the Photos section of this report. Analytical results and Inspector Field Notes are provided in Appendix A and Appendix B respectively.

The CADD drawing for this building shows approximate asbestos sample locations and shortened sample numbers. The floor plan legend shows positive sample numbers and associated positive (stop positives) in blue on the drawing. Building areas containing ACM are shown on the drawing in red with markings to indicate the kind of material (e.g., floor tile).

Summary of Positive ACM Samples

Sample#	Sample Location	ACM Location	Description of Material	Percent and Type of Asbestos	Condition	Estimated Quantity	NESHAP Category
44	Room 411	Interior Side of Exterior Brick	Black Waterproofing	10% Chrysotile	Good	23,300 SF	II

SF – Square Feet

LF – Linear Feet

Category I – non-friable asbestos-containing material (ACM) – means asbestos-containing packings, gaskets, resilient floor covering, and asphalt roofing products containing more than 1 percent asbestos as determined using the method specified in Appendix A, Subpart F, 40 CFR part 763, Section 1, Polarized Light Microscopy.

Category II – non-friable ACM – means any material, excluding Category I non-friable ACM, containing more than 1 percent asbestos as determined using the methods specified in Appendix A, Subpart F, 40 CFR part 763, Section I, Polarized Light Microscopy that, when dry, cannot be crumbled, pulverized, or reduced to powder by hand pressure.

Friable asbestos material – means any material containing more than 1 percent asbestos as determined using the method specified in Appendix A, Subpart F, 40 CFR part 763 Section I, Polarized Light Microscopy, that, when dry, can be crumbled, pulverized, or reduced to powder by hand pressure.

6.0 LIMITATIONS

This inspection report is the result of a diligent search of the building for asbestos containing building materials. The purpose of this inspection was to identify ACM. Only materials that were accessible were sampled and submitted to the laboratory for asbestos analysis. However comprehensive this inspection appears, it does not claim to have identified all of the asbestos-containing materials present in the facility. M&A's evaluation was performed with limitations inherent to visual inspections. M&A has conducted this assessment with reasonable care and has performed this study within general industry standards. As with any study of this nature, limitations are inherent. There can be no assurances, and M&A makes no assurances, that the said information, research, and technology may not change in the future, thus affecting the services provided. M&A understands that you will be the sole recipient of our report and will not distribute the report to any other party without prior written approval.

7.0 CLOSING REMARKS

The VAMC should assume materials not previously sampled due to accessibility, etc. which will be impacted by any future renovation activities to be asbestos-containing materials unless proved otherwise. Only Florida Licensed Asbestos Consultants can state that a building material is presumed to be asbestos-containing. If asbestos-containing materials must be disturbed as a part of the renovations, all ACMs must be removed by a State of Florida licensed asbestos abatement contractor. If proposed renovations will not disturb asbestos-containing materials, continuous monitoring of ACMs should be conducted throughout renovation activities to ensure the ACMs remain in an intact condition. Additionally, prior to commencing renovations, all contractors involved with the renovations should be made aware of the location and quantity of ACM within the building in which they will be working.

If any asbestos-containing material is damaged or becomes damaged it should be repaired, if possible, or removed entirely.

Prior to initiating any renovation or demolition project, Federal Law requires that the local EPA representative's office be notified in writing at least 10 working days prior to the onset of the project. The State Asbestos Coordinator's Office also requires a copy of the notification (address to State Asbestos Coordinator, State of Florida Environmental Regulation, 2600 Blare Stone Road, Tallahassee, Florida 32399-2400).

TABLE

Asbestos Screening Results
VA Medical Center - Bay Pines, FL

Building 22

Sample #	Room #	Area Designation	Description of Material	Asbestos % Type	Estimated Quantity	Location	Condition	NESHAP Category
22SJM 1	433		Brown Baseboard Mastic	NAD				
22SJM 2	433		Brown Baseboard Mastic	NAD				
22SJM 3	200		Brown Baseboard Mastic	NAD				
22SJM 4	433		Yellow FT Mastic	NAD				
22SJM 5	427		Yellow FT Mastic	NAD				
22SJM 6	342		Yellow FT Mastic	NAD				
22SJM 7	434		12" x12" Brown speckled Floor Tile & Mastic	NAD				
22SJM 8	434		12" x12" Brown speckled Floor Tile & Mastic	NAD				
22SJM 9	434		12" x12" Brown speckled Floor Tile & Mastic	NAD				
22SJM 10	434		Gray Kitchen Sink Coating	NAD				
22SJM 11	434		Gray Kitchen Sink Coating	NAD				
22SJM 12	434		Gray Kitchen Sink Coating	NAD				
22SJM 13 Floor	437		12" x 12" Beige Floor Tile	NAD				
22SJM 14 Floor	437		12" x 12" Beige Floor Tile	NAD				
22SJM 15 Floor	423		12" x 12" Beige Floor Tile	NAD				
22SJM 13A Mastic	437		Black Mastic	NAD				
22SJM 14A Mastic	437		Black Mastic	NAD				
22SJM 15A Mastic	423		Black Mastic	NAD				
22SJM 16	C4-2		2' x 4' Ceiling Tile	NAD				
22SJM 17	C4-2		2' x 4' Ceiling Tile	NAD				
22SJM 18	425		2' x 4' Ceiling Tile	NAD				
22SJM 19	C4-2		Gray Duct Mastic	NAD				
22SJM 20	C4-2		Gray Duct Mastic	NAD				
22SJM 21	C4-2		Gray Duct Mastic	NAD				
22SJM 22		Exterior	Exterior Stucco	NAD				
22SJM 23		Exterior	Exterior Stucco	NAD				
22SJM 24		Exterior	Exterior Stucco	NAD				
22SJM 25		Exterior	Exterior Stucco	NAD				
22SJM 26		Exterior	Exterior Stucco	NAD				
22SJM 27		Exterior	Exterior Stucco	NAD				
22SJM 28		Exterior	Exterior Stucco	NAD				
22SJM 29	437		8" Straight Pipe Insulation	NAD				
22SJM 30	437		8" Straight Pipe Insulation	NAD				
22SJM 31	437		8" Straight Pipe Insulation	NAD				
22SJM 32	437		Joint/Elbow Compound	NAD				
22SJM 33	437		Joint/Elbow Compound	NAD				
22SJM 34	437		Joint/Elbow Compound	NAD				
22SJM 35	425		Drywall Joint Compound	NAD				
22SJM 36	425		Drywall Joint Compound	NAD				
22SJM 37	408		Drywall Joint Compound	NAD				
22SJM 38	408		Drywall Joint Compound	NAD				
22SJM 39	122		Drywall Joint Compound	NAD				
22SJM 40	122		Drywall Joint Compound	NAD				
22SJM 41	122		Drywall Joint Compound	NAD				
22SJM 42	122		Drywall Joint Compound	NAD				
22SJM 44	411	Exterior Brick	Black Waterproofing	10% Chrysotile	23300 Square Feet	Interior Side of Exterior Walls	Good	II
22SJM 45	411	Exterior Brick	Black Waterproofing	stop positive	23300 Square Feet	Interior Side of Exterior Walls	Good	II

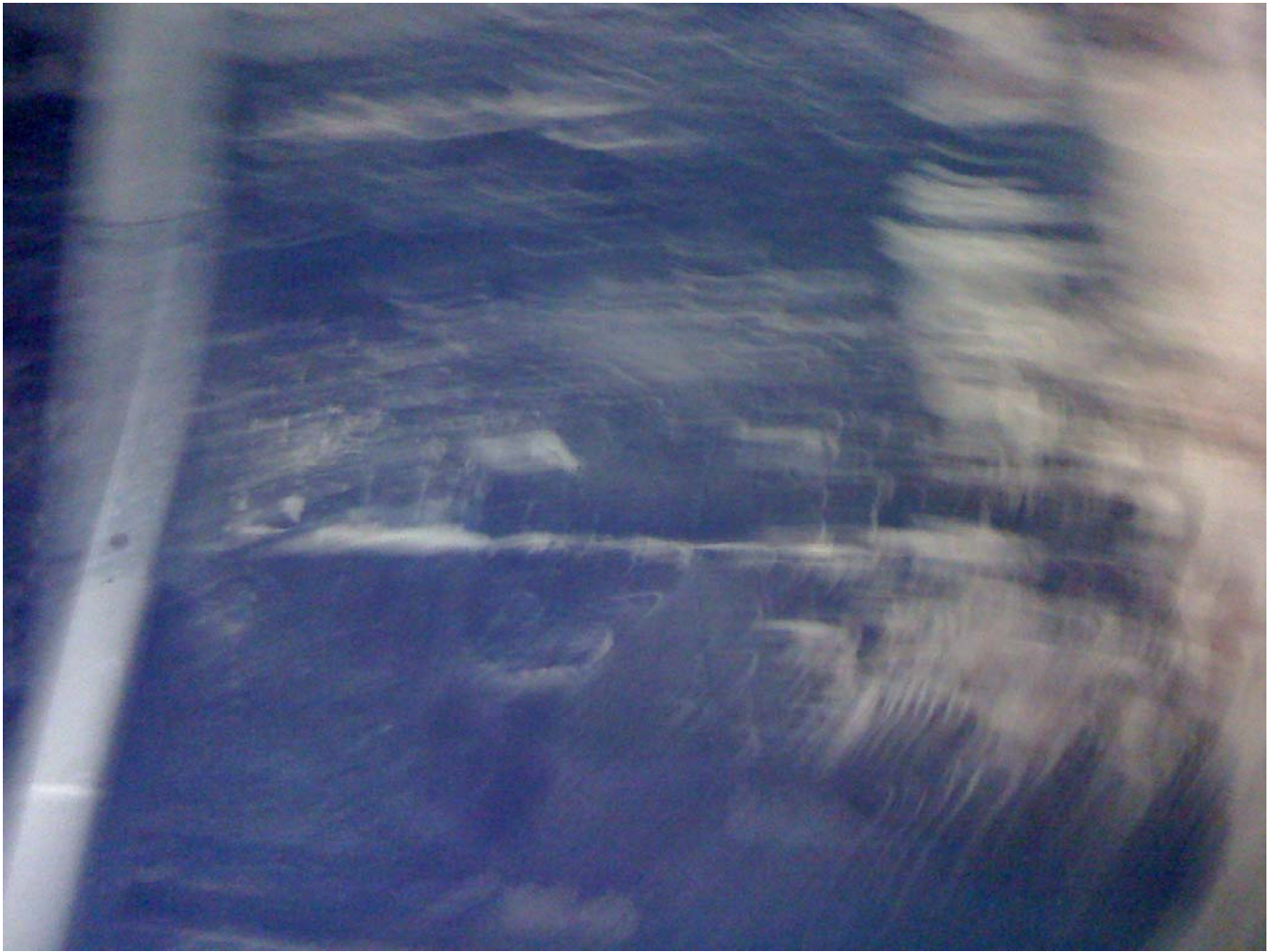
Asbestos Screening Results
VA Medical Center - Bay Pines, FL

Building 22

<u>Sample #</u>	<u>Room #</u>	<u>Area Designation</u>	<u>Description of Material</u>	<u>Asbestos % Type</u>	<u>Estimated Quantity</u>	<u>Location</u>	<u>Condition</u>	<u>NESHAP Category</u>
22SJM 46	409	Exterior Brick	Black Waterproofing	stop positive	23300 Square Feet	Interior Side of Exterior Walls	Good	II
22SJM 47	407		Red Fire Stop	NAD				
22SJM 48	407		Red Fire Stop	NAD				
22SJM 49	407		Red Fire Stop	NAD				
22SJM 50	419		Wall Plaster	NAD				
22SJM 51	419		Wall Plaster	NAD				
22SJM 52	419		Wall Plaster	NAD				
22SJM 53	419		Concrete Crack Mastic	NAD				
22SJM 54	419		Concrete Crack Mastic	NAD				
22SJM 55	419		Concrete Crack Mastic	NAD				
22SJM 56	342		Floor Leveling Compound	NAD				
22SJM 57	342		Floor Leveling Compound	NAD				
22SJM 58	342		Floor Leveling Compound	NAD				
22SJM 59	342		Tan Mastiac on Gray Baseboard	NAD				
22SJM 60	336		Tan Mastiac on Gray Baseboard	NAD				
22SJM 61	336		Tan Mastiac on Gray Baseboard	NAD				
22SJM 62	330B		Tan Sink Coating	NAD				
22SJM 63	330B		Tan Sink Coating	NAD				
22SJM 64	330B		Tan Sink Coating	NAD				
22SJM 65	C3-2	Hallway	12" x 12" Olive/Beige Floor Tile & Mastic	NAD				
22SJM 66	C3-2	Hallway	12" x 12" Olive/Beige Floor Tile & Mastic	NAD				
22SJM 67	117A		12" x 12" Olive/Beige Floor Tile & Mastic	NAD				
22SJM 68	227		12" x 12" Tan Specks Floor Tile & Mastic	NAD				
22SJM 69	202B		12" x 12" Tan Specks Floor Tile & Mastic	NAD				
22SJM 70	203		12" x 12" Tan Specks Floor Tile & Mastic	NAD				
22SJM 71	215		12" x 12" Light Blue Floor Tile & Mastic	NAD				
22SJM 72	215		12" x 12" Light Blue Floor Tile & Mastic	NAD				
22SJM 73	215		12" x 12" Light Blue Floor Tile & Mastic	NAD				
22SJM 74	C1-4	Foyer	12" x 12" Light Tan Floor Tile & Mastic	NAD				
22SJM 75	C1-4	Foyer	12" x 12" Light Tan Floor Tile & Mastic	NAD				
22SJM 76	C1-4	Foyer	12" x 12" Light Tan Floor Tile & Mastic	NAD				
22SJM 77		Exterior	Window Putty	NAD				
22SJM 78		Exterior	Window Putty	NAD				
22SJM 79		Exterior	Window Putty	NAD				

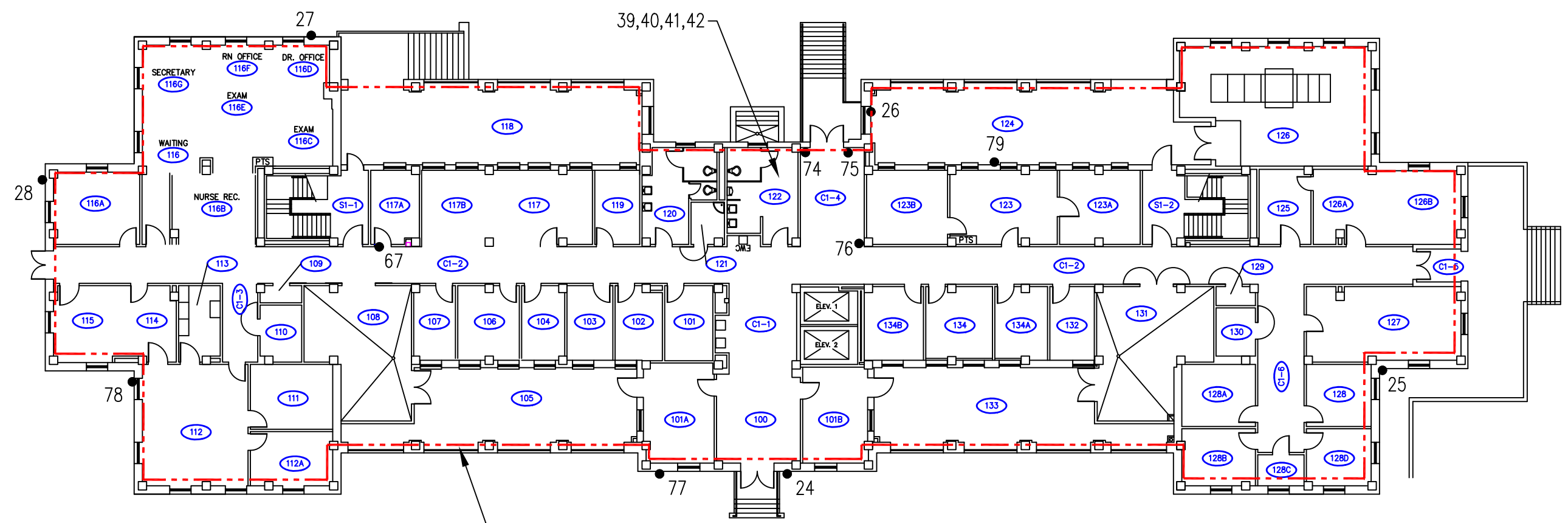
Note: Positive Asbestos and "Stop Positive" samples in Red
Note: NAD - No Asbestos Detected
Note: N/A - Analysis Not Applicable
Note: No roof sampling per VAMC due to roof warranty issue.

PHOTOS



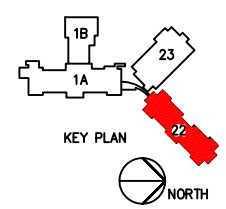
Building 22
Sample 44 – Black Waterproofing

DRAWINGS

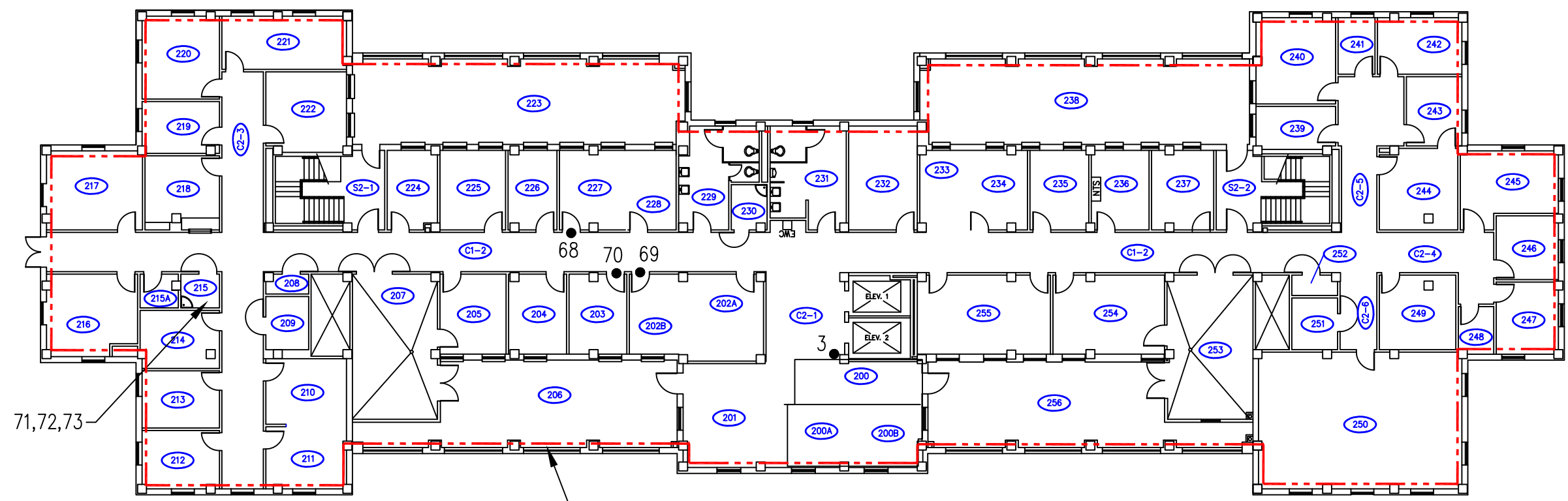


LEGEND

- 1,2 APPROXIMATE SAMPLE LOCATION
- 25 SAMPLE GREATER THAN 1% ASBESTOS
- 25* STOP POSITIVE SAMPLE FOR ASBESTOS
- 25 NO ASBESTOS DETECTED (NAD)
- HATCHED AREAS INDICATE POSITIVE DETECTION OF ASBESTOS CONTAINING BUILDING COMPONENTS
- WATER PROOFING ON EXTERIOR BRICK

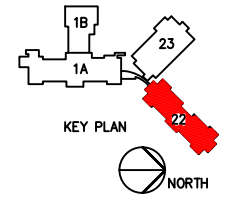


Drawing Title FIRST FLOOR PLAN		Project Title ACM SURVEY		Date JULY 31, 2009	
SCALE: 1/8" = 1'-0"		Building Number 22		Checked RKM	Drawn DJA
Location V.A.M.C. BAY PINES, FLORIDA		Project No. 2009011.001		DRAWING NO. 1	
		Dwg. 1 Of 4		BAY PINES MEDICAL CENTER	

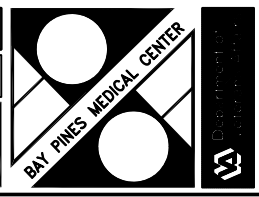


WATER PROOFING ON INTERIOR SIDE OF EXTERIOR BRICK

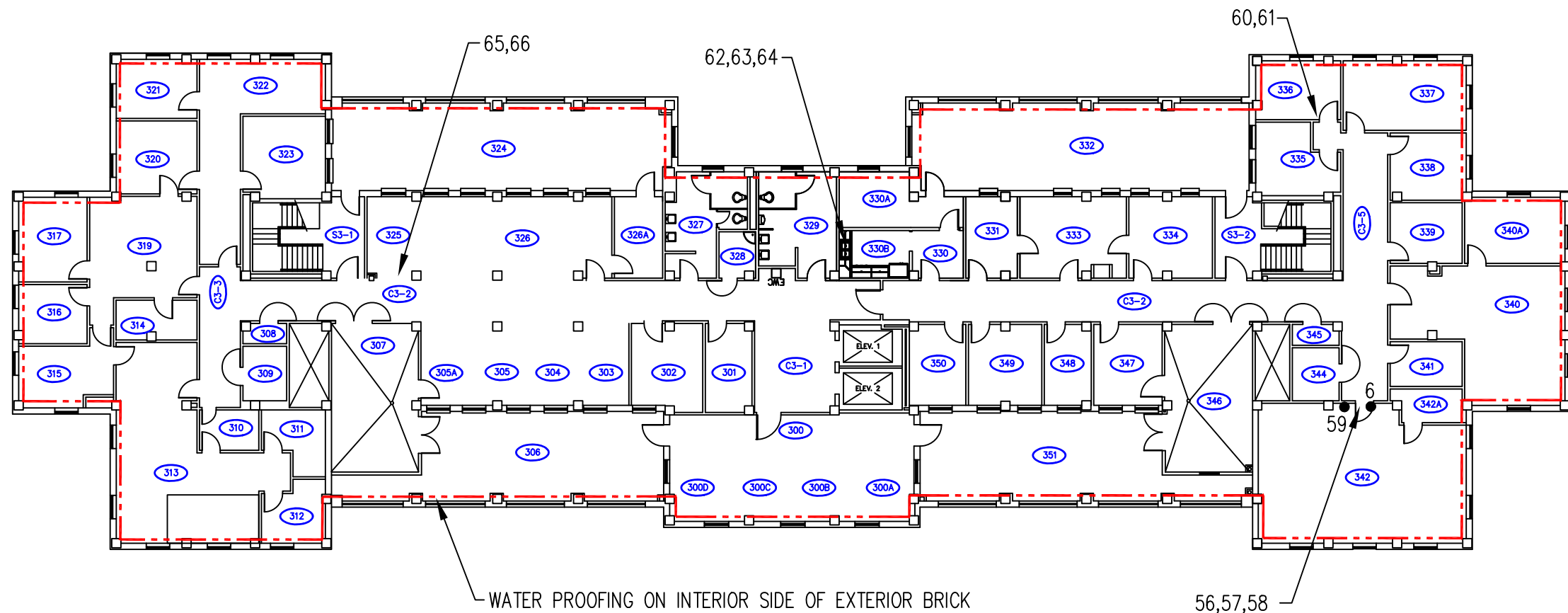
- LEGEND
- 1,2 APPROXIMATE SAMPLE LOCATION
 - 25 SAMPLE GREATER THAN 1% ASBESTOS
 - 25* STOP POSITIVE SAMPLE FOR ASBESTOS
 - 25 NO ASBESTOS DETECTED (NAD)
 - HATCHED AREAS INDICATE POSITIVE DETECTION OF ASBESTOS CONTAINING BUILDING COMPONENTS
 - WATER PROOFING ON EXTERIOR BRICK



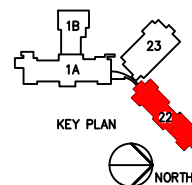
Drawing Title	Project Title	Date
SECOND FLOOR PLAN	ACM SURVEY	JULY 31, 2009
SCALE: 1/8" = 1'-0"	Building Number	Checked
	22	RKM
	Drawn	DJA
	Location	DRAWING NO.
	V.A.M.C. BAY PINES, FLORIDA	2
		Dwg. 2 of 4



three inches = one foot
One and one-half inches = one foot
one inch = one foot
three-quarters inch = one foot
one-half inch = one foot
three-eighths inch = one foot
one-quarter inch = one foot
one-eighth inch = one foot



- 1,2 APPROXIMATE SAMPLE LOCATION
- 25 SAMPLE GREATER THAN 1% ASBESTOS
- 25* STOP POSITIVE SAMPLE FOR ASBESTOS
- 25 NO ASBESTOS DETECTED (NAD)
- HATCHED AREAS INDICATE POSITIVE DETECTION OF ASBESTOS CONTAINING BUILDING COMPONENTS
- WATER PROOFING ON EXTERIOR BRICK

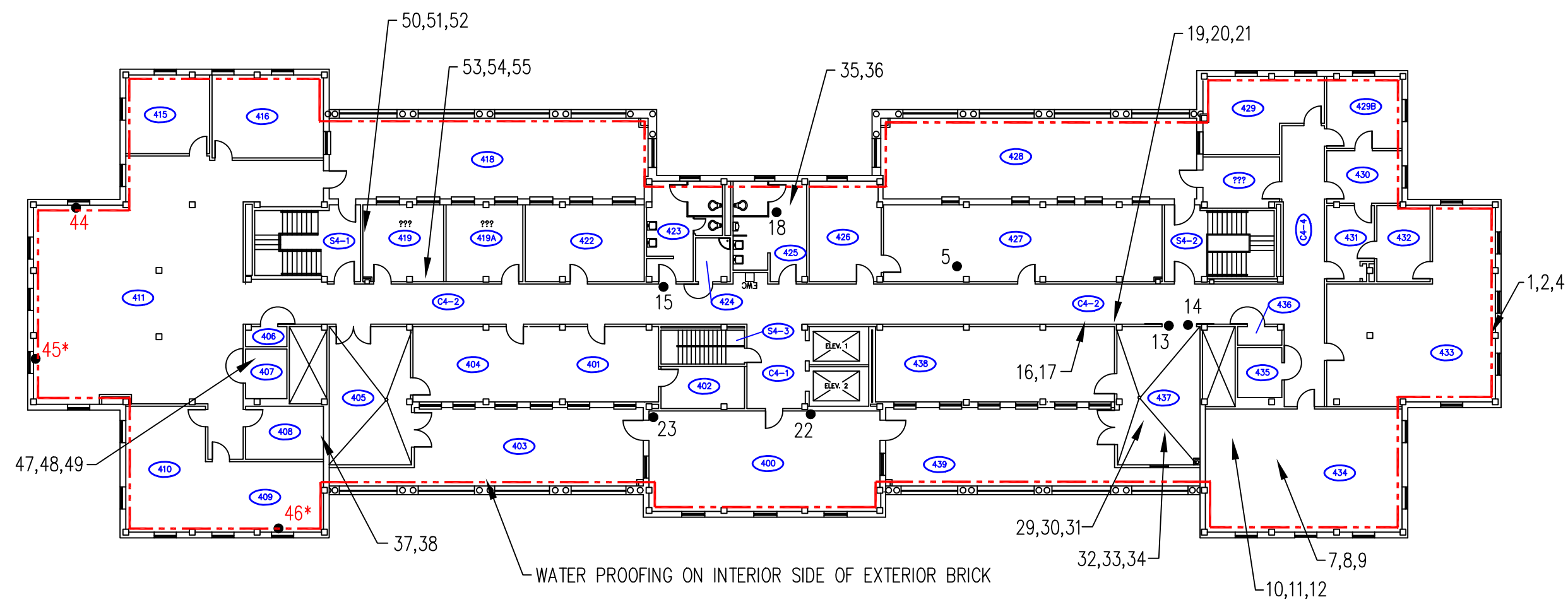


Drawing Title	THIRD FLOOR PLAN		Project Title	ACM SURVEY		Date	JULY 31, 2009	
SCALE: 1/8" = 1'-0"			Building Number	22		Project No.	2009011.001	
			Checked	RKM		Drawn	DJA	
			Location	V.A.M.C. BAY PINES, FLORIDA		DRAWING NO.	3	
						Dwg. 3 of 4		

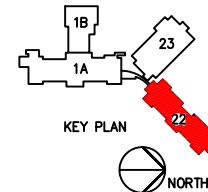


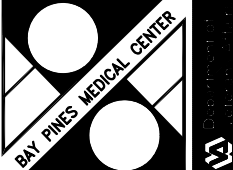
Split rm 326 made 326A, CLM 12/6/08
Revisions Date

VA FORM 08-6231, DEC 1989



- LEGEND
- 1,2 APPROXIMATE SAMPLE LOCATION
- 25 SAMPLE GREATER THAN 1% ASBESTOS
- 25* STOP POSITIVE SAMPLE FOR ASBESTOS
- 25 NO ASBESTOS DETECTED (NAD)
- HATCHED AREAS INDICATE POSITIVE DETECTION OF ASBESTOS CONTAINING BUILDING COMPONENTS
- WATER PROOFING ON EXTERIOR BRICK



Drawing Title	Project Title	Date		
FOURTH FLOOR PLAN	ACM SURVEY	JULY 31, 2009		
SCALE: 1/8" = 1'-0"	Building Number	Checked		
	22	RKM		
	Drawn	DJA	DRAWING NO.	
	Location		4	
	V.A.M.C. BAY PINES, FLORIDA		Dwg. 4 Of 4	

APPENDIX A
LAB REPORTS

**EMSL Analytical, Inc.**

10768 Baltimore Avenue, Beltsville, MD 20705

Phone: (301) 937-5700 Fax: (301) 937-5701 Email: beltsvillelab@emsl.com

Attn: **Jason Marberry**
ECS, Ltd.
2815 Directors Row.Suite 500
Orlando, FL 32809

Customer ID: ECSL77
Customer PO: 24-3255
Received: 06/29/09 8:50 AM
EMSL Order: 190906067

Fax: (407) 859-9599 Phone: (407) 859-8378
Project: 24-3255

EMSL Proj:
Analysis Date: 7/2/2009

Asbestos Analysis of Bulk Materials via EPA 600/R-93/116 Method using Polarized Light Microscopy

Sample	Description	Appearance	Non-Asbestos		Asbestos
			% Fibrous	% Non-Fibrous	% Type
22 SJM 1 190906067-0001	BROWN COVE BASE MASTIC RM 433	Cream Non-Fibrous Heterogeneous		100% Non-fibrous (other)	None Detected
22 SJM 2 190906067-0002	BROWN COVE BASE MASTIC RM 433	Cream Non-Fibrous Heterogeneous		100% Non-fibrous (other)	None Detected
22 SJM 3 190906067-0003	BROWN COVE BASE MASTIC RM 200	Cream Non-Fibrous Heterogeneous		100% Non-fibrous (other)	None Detected
22 SJM 4 190906067-0004	YELLOW FT MASTIC ROOM 433	Cream Non-Fibrous Heterogeneous		100% Non-fibrous (other)	None Detected
22 SJM 5 190906067-0005	YELLOW FT MASTIC ROOM 427	Yellow/Gray Non-Fibrous Heterogeneous		100% Non-fibrous (other)	None Detected
22 SJM 6 190906067-0006	YELLOW FT MASTIC ROOM 342	Yellow/Gray Non-Fibrous Heterogeneous		100% Non-fibrous (other)	None Detected
22 SJM 7 190906067-0007	12 X 12 BROWN SPECKED FT & MASTIC RM 434	Brown/Tan Non-Fibrous Heterogeneous		100% Non-fibrous (other)	None Detected

Analyst(s)

Alexis Turner (79)

Joe Centifanti, Laboratory Manager
or other approved signatory

Due to magnification limitations inherent in PLM, asbestos fibers in dimensions below the resolution capability of PLM may not be detected. The limit of detection as stated in the method is 1%. The above test report relates only to the items tested and may not be reproduced in any form without the express written approval of EMSL Analytical, Inc. EMSL's liability is limited to the cost of analysis. EMSL bears no responsibility for sample collection activities or analytical method limitations. Interpretation and use of test results are the responsibility of the client. Samples received in good condition unless otherwise noted. This report must not be used to claim product endorsement by NVLAP or any agency of the U.S. Government.

Samples analyzed by EMSL Analytical, Inc. Beltsville 10768 Baltimore Avenue, Beltsville MD NVLAP Lab Code 200293-0

**EMSL Analytical, Inc.**

10768 Baltimore Avenue, Beltsville, MD 20705

Phone: (301) 937-5700 Fax: (301) 937-5701 Email: beltsvillelab@emsl.com

Attn: **Jason Marberry**
ECS, Ltd.
2815 Directors Row.Suite 500
Orlando, FL 32809

Fax: (407) 859-9599

Phone: (407) 859-8378

Project: **24-3255**

Customer ID: EC SL77

Customer PO: 24-3255

Received: 06/29/09 8:50 AM

EMSL Order: 190906067

EMSL Proj:

Analysis Date: 7/2/2009

Asbestos Analysis of Bulk Materials via EPA 600/R-93/116 Method using Polarized Light Microscopy

Sample	Description	Appearance	Non-Asbestos		Asbestos
			% Fibrous	% Non-Fibrous	% Type
22 SJM 8 190906067-0008	12 X 12 BROWN SPECKED FT & MASTIC RM 434	Brown/Tan Non-Fibrous Heterogeneous		100% Non-fibrous (other)	None Detected
22 SJM 9 190906067-0009	12 X 12 BROWN SPECKED FT & MASTIC RM 434	Brown/Tan Non-Fibrous Heterogeneous		100% Non-fibrous (other)	None Detected
22 SJM 10 190906067-0010	GRAY KITCHEN SINK COATINGRM 434	Gray Non-Fibrous Homogeneous	15% Cellulose	85% Non-fibrous (other)	None Detected
22 SJM 11 190906067-0011	GRAY KITCHEN SINK COATINGRM 434	Gray Non-Fibrous Homogeneous	5% Cellulose	95% Non-fibrous (other)	None Detected
22 SJM 12 190906067-0012	GRAY KITCHEN SINK COATINGRM 434	Gray Non-Fibrous Homogeneous	15% Cellulose	85% Non-fibrous (other)	None Detected
22 SJM 13 190906067-0013	12 X 12 BEIGE FT & MASTIC RM 434	Gray Non-Fibrous Heterogeneous		100% Non-fibrous (other)	None Detected
TILE					
22 SJM 13A 190906067-0013A	12 X 12 BEIGE FT & MASTIC RM 434	Black Non-Fibrous Heterogeneous	5% Synthetic	95% Non-fibrous (other)	None Detected
MASTIC					

Analyst(s)

Alexis Turner (79)

Joe Centifonti, Laboratory Manager
or other approved signatory

Due to magnification limitations inherent in PLM, asbestos fibers in dimensions below the resolution capability of PLM may not be detected. The limit of detection as stated in the method is 1%. The above test report relates only to the items tested and may not be reproduced in any form without the express written approval of EMSL Analytical, Inc. EMSL's liability is limited to the cost of analysis. EMSL bears no responsibility for sample collection activities or analytical method limitations. Interpretation and use of test results are the responsibility of the client. Samples received in good condition unless otherwise noted. This report must not be used to claim product endorsement by NVLAP or any agency of the U.S. Government.

Samples analyzed by EMSL Analytical, Inc. Beltsville 10768 Baltimore Avenue, Beltsville MD NVLAP Lab Code 200293-0

**EMSL Analytical, Inc.**

10768 Baltimore Avenue, Beltsville, MD 20705

Phone: (301) 937-5700 Fax: (301) 937-5701 Email: beltsvillelab@emsl.com

Attn: **Jason Marberry**
ECS, Ltd.
2815 Directors Row.Suite 500
Orlando, FL 32809

Customer ID: ECSL77
Customer PO: 24-3255
Received: 06/29/09 8:50 AM
EMSL Order: 190906067

Fax: (407) 859-9599 Phone: (407) 859-8378
Project: **24-3255**

EMSL Proj:
Analysis Date: 7/2/2009

Asbestos Analysis of Bulk Materials via EPA 600/R-93/116 Method using Polarized Light Microscopy

Sample	Description	Appearance	Non-Asbestos		Asbestos
			% Fibrous	% Non-Fibrous	% Type
22 SJM 14 190906067-0014	12 X 12 BEIGE FT & MASTIC RM 4	Gray Non-Fibrous Heterogeneous		100% Non-fibrous (other)	None Detected
TILE					
22 SJM 14A 190906067-0014A	12 X 12 BEIGE FT & MASTIC RM 4	Black Non-Fibrous Heterogeneous		100% Non-fibrous (other)	None Detected
MASTIC					
22 SJM 15 190906067-0015	12 X 12 BEIGE FT & MASTIC RM 4323	Gray Non-Fibrous Heterogeneous		100% Non-fibrous (other)	None Detected
TILE					
22 SJM 15A 190906067-0015A	12 X 12 BEIGE FT & MASTIC RM 4323	Black Non-Fibrous Heterogeneous		100% Non-fibrous (other)	None Detected
MASTIC					
22 SJM 16 190906067-0016	2 X 4 CEILING TILE C4-2	Gray/White Fibrous Heterogeneous	50% Cellulose 40% Min. Wool	10% Non-fibrous (other)	None Detected
22 SJM 17 190906067-0017	2 X 4 CEILING TILE C4-2	Gray/White Fibrous Heterogeneous	50% Cellulose 40% Min. Wool	10% Non-fibrous (other)	None Detected

Analyst(s)

Alexis Turner (79)

Joe Centifanti, Laboratory Manager
or other approved signatory

Due to magnification limitations inherent in PLM, asbestos fibers in dimensions below the resolution capability of PLM may not be detected. The limit of detection as stated in the method is 1%. The above test report relates only to the items tested and may not be reproduced in any form without the express written approval of EMSL Analytical, Inc. EMSL's liability is limited to the cost of analysis. EMSL bears no responsibility for sample collection activities or analytical method limitations. Interpretation and use of test results are the responsibility of the client. Samples received in good condition unless otherwise noted. This report must not be used to claim product endorsement by NVLAP or any agency of the U.S. Government.

Samples analyzed by EMSL Analytical, Inc. Beltsville 10768 Baltimore Avenue, Beltsville MD NVLAP Lab Code 200293-0

**EMSL Analytical, Inc.**

10768 Baltimore Avenue, Beltsville, MD 20705

Phone: (301) 937-5700 Fax: (301) 937-5701 Email: beltsvillelab@emsl.com

Attn: **Jason Marberry**
ECS, Ltd.
2815 Directors Row.Suite 500
Orlando, FL 32809

Customer ID: ECSSL77
Customer PO: 24-3255
Received: 06/29/09 8:50 AM
EMSL Order: 190906067

Fax: (407) 859-9599 Phone: (407) 859-8378
Project: **24-3255**

EMSL Proj:
Analysis Date: 7/2/2009

Asbestos Analysis of Bulk Materials via EPA 600/R-93/116 Method using Polarized Light Microscopy

Sample	Description	Appearance	Non-Asbestos		Asbestos
			% Fibrous	% Non-Fibrous	% Type
22 SJM 18 190906067-0018	2 X 4 CEILING TILE ROOM 425	White/Tan Fibrous Heterogeneous	50% Cellulose 40% Min. Wool	10% Non-fibrous (other)	None Detected
22 SJM 19 190906067-0019	GRY DUCT MASTIC C4-2	Gray Non-Fibrous Heterogeneous		100% Non-fibrous (other)	None Detected
22 SJM 20 190906067-0020	GRY DUCT MASTIC C4-2	Gray Non-Fibrous Heterogeneous		100% Non-fibrous (other)	None Detected
22 SJM 21 190906067-0021	GRY DUCT MASTIC C4-2	Gray Non-Fibrous Heterogeneous		100% Non-fibrous (other)	None Detected
22 SJM 22 190906067-0022	EXTERIOR STUCCO	Cream/Gray Non-Fibrous Heterogeneous		100% Non-fibrous (other)	None Detected
22 SJM 23 190906067-0023	EXTERIOR STUCCO	Cream/Gray Non-Fibrous Heterogeneous		100% Non-fibrous (other)	None Detected
22 SJM 24 190906067-0024	EXTERIOR STUCCO	Cream/Gray Non-Fibrous Heterogeneous		100% Non-fibrous (other)	None Detected

Analyst(s)

Alexis Turner (79)

Joe Centifanti, Laboratory Manager
or other approved signatory

Due to magnification limitations inherent in PLM, asbestos fibers in dimensions below the resolution capability of PLM may not be detected. The limit of detection as stated in the method is 1%. The above test report relates only to the items tested and may not be reproduced in any form without the express written approval of EMSL Analytical, Inc. EMSL's liability is limited to the cost of analysis. EMSL bears no responsibility for sample collection activities or analytical method limitations. Interpretation and use of test results are the responsibility of the client. Samples received in good condition unless otherwise noted. This report must not be used to claim product endorsement by NVLAP or any agency of the U.S. Government.

Samples analyzed by EMSL Analytical, Inc. Beltsville 10768 Baltimore Avenue, Beltsville MD NVLAP Lab Code 200293-0

**EMSL Analytical, Inc.**

10768 Baltimore Avenue, Beltsville, MD 20705

Phone: (301) 937-5700 Fax: (301) 937-5701 Email: beltsvillelab@emsl.com

Attn: **Jason Marberry**
ECS, Ltd.
2815 Directors Row.Suite 500
Orlando, FL 32809

Customer ID: ECSL77
Customer PO: 24-3255
Received: 06/29/09 8:50 AM
EMSL Order: 190906067

Fax: (407) 859-9599 Phone: (407) 859-8378
Project: **24-3255**

EMSL Proj:
Analysis Date: 7/2/2009

Asbestos Analysis of Bulk Materials via EPA 600/R-93/116 Method using Polarized Light Microscopy

Sample	Description	Appearance	Non-Asbestos		Asbestos
			% Fibrous	% Non-Fibrous	% Type
22 SJM 25 190906067-0025	EXTERIOR STUCCO	Gray/Cream Non-Fibrous Heterogeneous		100% Non-fibrous (other)	None Detected
22 SJM 26 190906067-0026	EXTERIOR STUCCO	Gray/Cream Non-Fibrous Heterogeneous		100% Non-fibrous (other)	None Detected
22 SJM 27 190906067-0027	EXTERIOR STUCCO	Gray/Cream Non-Fibrous Heterogeneous		100% Non-fibrous (other)	None Detected
22 SJM 28 190906067-0028	EXTERIOR STUCCO	Gray/Cream Non-Fibrous Heterogeneous		100% Non-fibrous (other)	None Detected
22 SJM 29 190906067-0029	8" STRAIGHT PIPE INSULATION RM 437	White/Silver Fibrous Heterogeneous	50% Cellulose 30% Glass	20% Non-fibrous (other)	None Detected
22 SJM 30 190906067-0030	8" STRAIGHT PIPE INSULATION RM 437	Black/White Fibrous Heterogeneous	50% Cellulose	50% Non-fibrous (other)	None Detected
22 SJM 31 190906067-0031	8" STRAIGHT PIPE INSULATION RM 437	Black/White Fibrous Heterogeneous	50% Cellulose	50% Non-fibrous (other)	None Detected

Analyst(s)

Alexis Turner (79)

Joe Centifanti, Laboratory Manager
or other approved signatory

Due to magnification limitations inherent in PLM, asbestos fibers in dimensions below the resolution capability of PLM may not be detected. The limit of detection as stated in the method is 1%. The above test report relates only to the items tested and may not be reproduced in any form without the express written approval of EMSL Analytical, Inc. EMSL's liability is limited to the cost of analysis. EMSL bears no responsibility for sample collection activities or analytical method limitations. Interpretation and use of test results are the responsibility of the client. Samples received in good condition unless otherwise noted. This report must not be used to claim product endorsement by NVLAP or any agency of the U.S. Government.

Samples analyzed by EMSL Analytical, Inc. Beltsville 10768 Baltimore Avenue, Beltsville MD NVLAP Lab Code 200293-0

**EMSL Analytical, Inc.**

10768 Baltimore Avenue, Beltsville, MD 20705

Phone: (301) 937-5700 Fax: (301) 937-5701 Email: beltsvillelab@emsl.com

Attn: **Jason Marberry**
ECS, Ltd.
2815 Directors Row.Suite 500
Orlando, FL 32809

Customer ID: ECSL77
Customer PO: 24-3255
Received: 06/29/09 8:50 AM
EMSL Order: 190906067

Fax: (407) 859-9599 Phone: (407) 859-8378
Project: 24-3255

EMSL Proj:
Analysis Date: 7/2/2009

Asbestos Analysis of Bulk Materials via EPA 600/R-93/116 Method using Polarized Light Microscopy

Sample	Description	Appearance	Non-Asbestos		Asbestos
			% Fibrous	% Non-Fibrous	% Type
22 SJM 32 190906067-0032	JOINT/ELBOW COMPOUND RM 437	Black/White Fibrous Heterogeneous	50% Cellulose	50% Non-fibrous (other)	None Detected
22 SJM 33 190906067-0033	JOINT/ELBOW COMPOUND RM 437	Black/White Fibrous Heterogeneous	50% Cellulose	50% Non-fibrous (other)	None Detected
22 SJM 34 190906067-0034	JOINT/ELBOW COMPOUND RM 437	Black/White Fibrous Heterogeneous	50% Cellulose	50% Non-fibrous (other)	None Detected
22 SJM 35 190906067-0035	DRYWALL JOINT COMPOUND 425	White/Red Fibrous Heterogeneous	15% Cellulose	85% Non-fibrous (other)	None Detected
22 SJM 36 190906067-0036	DRYWALL JOINT COMPOUND 425	Brown/White Fibrous Heterogeneous	25% Cellulose	75% Non-fibrous (other)	None Detected
22 SJM 37 190906067-0037	DRYWALL JOINT COMPOUND 408	Brown/White Fibrous Heterogeneous	25% Cellulose	75% Non-fibrous (other)	None Detected
22 SJM 38 190906067-0038	DRYWALL JOINT COMPOUND 408	Brown/White Fibrous Heterogeneous	20% Cellulose	80% Non-fibrous (other)	None Detected

Analyst(s)

Alexis Turner (79)

Joe Centifonti, Laboratory Manager
or other approved signatory

Due to magnification limitations inherent in PLM, asbestos fibers in dimensions below the resolution capability of PLM may not be detected. The limit of detection as stated in the method is 1%. The above test report relates only to the items tested and may not be reproduced in any form without the express written approval of EMSL Analytical, Inc. EMSL's liability is limited to the cost of analysis. EMSL bears no responsibility for sample collection activities or analytical method limitations. Interpretation and use of test results are the responsibility of the client. Samples received in good condition unless otherwise noted. This report must not be used to claim product endorsement by NVLAP or any agency of the U.S. Government.

Samples analyzed by EMSL Analytical, Inc. Beltsville 10768 Baltimore Avenue, Beltsville MD NVLAP Lab Code 200293-0



EMSL Analytical, Inc.

10768 Baltimore Avenue, Beltsville, MD 20705

Phone: (301) 937-5700 Fax: (301) 937-5701 Email: beltsvillelab@emsl.com

Attn: **Jason Marberry**
ECS, Ltd.
2815 Directors Row.Suite 500
Orlando, FL 32809

Fax: (407) 859-9599

Phone: (407) 859-8378

Project: **24-3255**

Customer ID: ECSL77

Customer PO: 24-3255

Received: 06/29/09 8:50 AM

EMSL Order: 190906067

EMSL Proj:

Analysis Date: 7/2/2009

Asbestos Analysis of Bulk Materials via EPA 600/R-93/116 Method using Polarized Light Microscopy

Sample	Description	Appearance	Non-Asbestos		Asbestos
			% Fibrous	% Non-Fibrous	% Type
22 SJM 39 190906067-0039	DRYWALL JOINT COMPOUND 122	Tan/Green Fibrous Heterogeneous	20% Cellulose	80% Non-fibrous (other)	None Detected
22 SJM 40 190906067-0040	DRYWALL JOINT COMPOUND 122	Brown/White Fibrous Heterogeneous	10% Cellulose	90% Non-fibrous (other)	None Detected
22 SJM 41 190906067-0041	DRYWALL JOINT COMPOUND 122	Tan/Green Fibrous Heterogeneous	20% Cellulose	80% Non-fibrous (other)	None Detected
22 SJM 42 190906067-0042	DRYWALL JOINT COMPOUND 122	Tan/Green Fibrous Heterogeneous	25% Cellulose	75% Non-fibrous (other)	None Detected
22 SJM 43 190906067-0043	DRYWALL JOINT COMPOUND 122				Not Submitted
22 SJM 44 190906067-0044	BLACK WATER PROOFING RM 411	Black Non-Fibrous Homogeneous		90% Non-fibrous (other)	10% Chrysotile
22 SJM 45 190906067-0045	BLACK WATER PROOFING RM 411				Stop Positive (Not Analyzed)

Analyst(s)

Alexis Turner (79)

Joe Centifanti, Laboratory Manager
or other approved signatory

Due to magnification limitations inherent in PLM, asbestos fibers in dimensions below the resolution capability of PLM may not be detected. The limit of detection as stated in the method is 1%. The above test report relates only to the items tested and may not be reproduced in any form without the express written approval of EMSL Analytical, Inc. EMSL's liability is limited to the cost of analysis. EMSL bears no responsibility for sample collection activities or analytical method limitations. Interpretation and use of test results are the responsibility of the client. Samples received in good condition unless otherwise noted. This report must not be used to claim product endorsement by NVLAP or any agency of the U.S. Government.

Samples analyzed by EMSL Analytical, Inc. Beltsville 10768 Baltimore Avenue, Beltsville MD NVLAP Lab Code 200293-0

**EMSL Analytical, Inc.**

10768 Baltimore Avenue, Beltsville, MD 20705

Phone: (301) 937-5700 Fax: (301) 937-5701 Email: beltsvillelab@emsl.com

Attn: **Jason Marberry**
ECS, Ltd.
2815 Directors Row.Suite 500
Orlando, FL 32809

Fax: (407) 859-9599

Phone: (407) 859-8378

Project: **24-3255**

Customer ID: ECSL77

Customer PO: 24-3255

Received: 06/29/09 8:50 AM

EMSL Order: 190906067

EMSL Proj:

Analysis Date: 7/2/2009

Asbestos Analysis of Bulk Materials via EPA 600/R-93/116 Method using Polarized Light Microscopy

Sample	Description	Appearance	Non-Asbestos		Asbestos
			% Fibrous	% Non-Fibrous	% Type
22 SJM 46 190906067-0046	BLACK WATER PROOFING RM 409				Stop Positive (Not Analyzed)
22 SJM 47 190906067-0047	RED FIRE STOP 407	Red Non-Fibrous Heterogeneous		100% Non-fibrous (other)	None Detected
22 SJM 48 190906067-0048	RED FIRE STOP 407	Red Non-Fibrous Heterogeneous		100% Non-fibrous (other)	None Detected
22 SJM 49 190906067-0049	RED FIRE STOP 407	Red Non-Fibrous Heterogeneous		100% Non-fibrous (other)	None Detected
22 SJM 50 190906067-0050	WALL PLASTER RM 419	White Non-Fibrous Heterogeneous		100% Non-fibrous (other)	None Detected
22 SJM 51 190906067-0051	WALL PLASTER RM 419	White Non-Fibrous Heterogeneous		100% Non-fibrous (other)	None Detected
22 SJM 52 190906067-0052	WALL PLASTER RM 419	White Non-Fibrous Heterogeneous		100% Non-fibrous (other)	None Detected

Analyst(s)

Alexis Turner (79)

Joe Centifanti, Laboratory Manager
or other approved signatory

Due to magnification limitations inherent in PLM, asbestos fibers in dimensions below the resolution capability of PLM may not be detected. The limit of detection as stated in the method is 1%. The above test report relates only to the items tested and may not be reproduced in any form without the express written approval of EMSL Analytical, Inc. EMSL's liability is limited to the cost of analysis. EMSL bears no responsibility for sample collection activities or analytical method limitations. Interpretation and use of test results are the responsibility of the client. Samples received in good condition unless otherwise noted. This report must not be used to claim product endorsement by NVLAP or any agency of the U.S. Government.

Samples analyzed by EMSL Analytical, Inc. Beltsville 10768 Baltimore Avenue, Beltsville MD NVLAP Lab Code 200293-0

**EMSL Analytical, Inc.**

10768 Baltimore Avenue, Beltsville, MD 20705

Phone: (301) 937-5700 Fax: (301) 937-5701 Email: beltsvillelab@emsl.com

Attn: **Jason Marberry**
ECS, Ltd.
2815 Directors Row.Suite 500
Orlando, FL 32809

Fax: (407) 859-9599

Phone: (407) 859-8378

Project: **24-3255**

Customer ID: ECSL77
Customer PO: 24-3255
Received: 06/29/09 8:50 AM
EMSL Order: 190906067

EMSL Proj:
Analysis Date: 7/2/2009

Asbestos Analysis of Bulk Materials via EPA 600/R-93/116 Method using Polarized Light Microscopy

Sample	Description	Appearance	Non-Asbestos		Asbestos
			% Fibrous	% Non-Fibrous	% Type
22 SJM 53 190906067-0053	CONCRETE CRACK MASTIC RM 419	Green Non-Fibrous Heterogeneous		100% Non-fibrous (other)	None Detected
22 SJM 54 190906067-0054	CONCRETE CRACK MASTIC RM 419	Green Non-Fibrous Heterogeneous		100% Non-fibrous (other)	None Detected
22 SJM 55 190906067-0055	CONCRETE CRACK MASTIC RM 419	Green Non-Fibrous Heterogeneous		100% Non-fibrous (other)	None Detected
22 SJM 56 190906067-0056	FLOOR LEVELING COMPOUND 342	Gray Non-Fibrous Heterogeneous	10% Cellulose	90% Non-fibrous (other)	None Detected
22 SJM 57 190906067-0057	FLOOR LEVELING COMPOUND 342	Gray Non-Fibrous Heterogeneous	5% Cellulose	95% Non-fibrous (other)	None Detected
22 SJM 58 190906067-0058	FLOOR LEVELING COMPOUND 342	Gray Non-Fibrous Heterogeneous	5% Cellulose	95% Non-fibrous (other)	None Detected
22 SJM 59 190906067-0059	TAN COVE BASE ON GRAY CB 342	Brown/Blue Fibrous Heterogeneous	15% Cellulose	85% Non-fibrous (other)	None Detected

Analyst(s)

Alexis Turner (79)

Joe Centifanti, Laboratory Manager
or other approved signatory

Due to magnification limitations inherent in PLM, asbestos fibers in dimensions below the resolution capability of PLM may not be detected. The limit of detection as stated in the method is 1%. The above test report relates only to the items tested and may not be reproduced in any form without the express written approval of EMSL Analytical, Inc. EMSL's liability is limited to the cost of analysis. EMSL bears no responsibility for sample collection activities or analytical method limitations. Interpretation and use of test results are the responsibility of the client. Samples received in good condition unless otherwise noted. This report must not be used to claim product endorsement by NVLAP or any agency of the U.S. Government.

Samples analyzed by EMSL Analytical, Inc. Beltsville 10768 Baltimore Avenue, Beltsville MD NVLAP Lab Code 200293-0



EMSL Analytical, Inc.

10768 Baltimore Avenue, Beltsville, MD 20705

Phone: (301) 937-5700 Fax: (301) 937-5701 Email: beltsvillelab@emsl.com

Attn: **Jason Marberry**
ECS, Ltd.
2815 Directors Row.Suite 500
Orlando, FL 32809

Fax: (407) 859-9599

Phone: (407) 859-8378

Project: **24-3255**

Customer ID: ECSL77

Customer PO: 24-3255

Received: 06/29/09 8:50 AM

EMSL Order: 190906067

EMSL Proj:

Analysis Date: 7/2/2009

Asbestos Analysis of Bulk Materials via EPA 600/R-93/116 Method using Polarized Light Microscopy

Sample	Description	Appearance	Non-Asbestos		Asbestos
			% Fibrous	% Non-Fibrous	% Type
22 SJM 60 190906067-0060	TAN COVE BASE ON GRAY CB 336	Yellow Non-Fibrous Heterogeneous		100% Non-fibrous (other)	None Detected
22 SJM 61 190906067-0061	TAN COVE BASE ON GRAY CB 336	White/Yellow Non-Fibrous Heterogeneous		100% Non-fibrous (other)	None Detected
22 SJM 62 190906067-0062	TAN SINK COATING 330 B	White Non-Fibrous Heterogeneous	5% Cellulose	95% Non-fibrous (other)	None Detected
22 SJM 63 190906067-0063	TAN SINK COATING 330 B	White Non-Fibrous Heterogeneous	5% Cellulose	95% Non-fibrous (other)	None Detected
22 SJM 64 190906067-0064	TAN SINK COATING 330 B	White Non-Fibrous Heterogeneous	5% Cellulose	95% Non-fibrous (other)	None Detected
22 SJM 65 190906067-0065	12 X 12 OLIVE/BEIGE FT & M HALL E 325	Gray Non-Fibrous Heterogeneous		100% Non-fibrous (other)	None Detected
22 SJM 66 190906067-0066	12 X 12 OLIVE/BEIGE FT & M HALL E 325	Gray Non-Fibrous Heterogeneous		100% Non-fibrous (other)	None Detected

Analyst(s)

Alexis Turner (79)

Joe Centifonti, Laboratory Manager
or other approved signatory

Due to magnification limitations inherent in PLM, asbestos fibers in dimensions below the resolution capability of PLM may not be detected. The limit of detection as stated in the method is 1%. The above test report relates only to the items tested and may not be reproduced in any form without the express written approval of EMSL Analytical, Inc. EMSL's liability is limited to the cost of analysis. EMSL bears no responsibility for sample collection activities or analytical method limitations. Interpretation and use of test results are the responsibility of the client. Samples received in good condition unless otherwise noted. This report must not be used to claim product endorsement by NVLAP or any agency of the U.S. Government.

Samples analyzed by EMSL Analytical, Inc. Beltsville 10768 Baltimore Avenue, Beltsville MD NVLAP Lab Code 200293-0

**EMSL Analytical, Inc.**

10768 Baltimore Avenue, Beltsville, MD 20705

Phone: (301) 937-5700 Fax: (301) 937-5701 Email: beltsvillelab@emsl.com

Attn: **Jason Marberry**
ECS, Ltd.
2815 Directors Row.Suite 500
Orlando, FL 32809

Fax: (407) 859-9599

Phone: (407) 859-8378

Project: **24-3255**

Customer ID: ECSL77
Customer PO: 24-3255
Received: 06/29/09 8:50 AM
EMSL Order: 190906067

EMSL Proj:
Analysis Date: 7/2/2009

Asbestos Analysis of Bulk Materials via EPA 600/R-93/116 Method using Polarized Light Microscopy

Sample	Description	Appearance	Non-Asbestos		Asbestos
			% Fibrous	% Non-Fibrous	% Type
22 SJM 67 190906067-0067	12 X 12 OLIVE/BEIGE FT & M HALL E 325	Gray Non-Fibrous Heterogeneous		100% Non-fibrous (other)	None Detected
22 SJM 68 190906067-0068	12 X 12 TAN SPECKS FT 7 M 227	White Non-Fibrous Heterogeneous		100% Non-fibrous (other)	None Detected
22 SJM 69 190906067-0069	12 X 12 TAN SPECKS FT 7 M 202 B	White Non-Fibrous Heterogeneous		100% Non-fibrous (other)	None Detected
22 SJM 70 190906067-0070	12 X 12 TAN SPECKS FT 7 M 203	White Non-Fibrous Heterogeneous		100% Non-fibrous (other)	None Detected
22 SJM 71 190906067-0071	12 X12 LIGHT BLUE FT & M 215	Blue Non-Fibrous Heterogeneous		100% Non-fibrous (other)	None Detected
22 SJM 72 190906067-0072	12 X12 LIGHT BLUE FT & M 215	Blue Non-Fibrous Heterogeneous		100% Non-fibrous (other)	None Detected
22 SJM 73 190906067-0073	12 X12 LIGHT BLUE FT & M 215	Blue Non-Fibrous Heterogeneous		100% Non-fibrous (other)	None Detected

Analyst(s)

Alexis Turner (79)

Joe Centifanti, Laboratory Manager
or other approved signatory

Due to magnification limitations inherent in PLM, asbestos fibers in dimensions below the resolution capability of PLM may not be detected. The limit of detection as stated in the method is 1%. The above test report relates only to the items tested and may not be reproduced in any form without the express written approval of EMSL Analytical, Inc. EMSL's liability is limited to the cost of analysis. EMSL bears no responsibility for sample collection activities or analytical method limitations. Interpretation and use of test results are the responsibility of the client. Samples received in good condition unless otherwise noted. This report must not be used to claim product endorsement by NVLAP or any agency of the U.S. Government.

Samples analyzed by EMSL Analytical, Inc. Beltsville 10768 Baltimore Avenue, Beltsville MD NVLAP Lab Code 200293-0

**EMSL Analytical, Inc.**

10768 Baltimore Avenue, Beltsville, MD 20705

Phone: (301) 937-5700 Fax: (301) 937-5701 Email: beltsvillelab@emsl.com

Attn: **Jason Marberry**
ECS, Ltd.
2815 Directors Row.Suite 500
Orlando, FL 32809

Fax: (407) 859-9599

Phone: (407) 859-8378

Project: **24-3255**

Customer ID: ECSL77
Customer PO: 24-3255
Received: 06/29/09 8:50 AM
EMSL Order: 190906067

EMSL Proj:
Analysis Date: 7/2/2009

Asbestos Analysis of Bulk Materials via EPA 600/R-93/116 Method using Polarized Light Microscopy

Sample	Description	Appearance	Non-Asbestos		Asbestos
			% Fibrous	% Non-Fibrous	% Type
22 SJM 74 190906067-0074	12 X 12 LIGHT TAN FT & M FOYER C1-4	Gray Non-Fibrous Heterogeneous		100% Non-fibrous (other)	None Detected
22 SJM 75 190906067-0075	12 X 12 LIGHT TAN FT & M FOYER C1-4	Gray Non-Fibrous Heterogeneous	5% Cellulose	95% Non-fibrous (other)	None Detected
22 SJM 76 190906067-0076	12 X 12 LIGHT TAN FT & M FOYER C1-4	Gray Non-Fibrous Heterogeneous		100% Non-fibrous (other)	None Detected
22 SJM 77 190906067-0077	EXTERIOR WINDOW PUTTY	Cream Non-Fibrous Heterogeneous		100% Non-fibrous (other)	None Detected
22 SJM 78 190906067-0078	EXTERIOR WINDOW PUTTY	Gray Non-Fibrous Heterogeneous		100% Non-fibrous (other)	None Detected
22 SJM 79 190906067-0079	EXTERIOR WINDOW PUTTY	Gray Non-Fibrous Heterogeneous		100% Non-fibrous (other)	None Detected

Analyst(s)

Alexis Turner (79)

Joe Centifanti, Laboratory Manager
or other approved signatory

Due to magnification limitations inherent in PLM, asbestos fibers in dimensions below the resolution capability of PLM may not be detected. The limit of detection as stated in the method is 1%. The above test report relates only to the items tested and may not be reproduced in any form without the express written approval of EMSL Analytical, Inc. EMSL's liability is limited to the cost of analysis. EMSL bears no responsibility for sample collection activities or analytical method limitations. Interpretation and use of test results are the responsibility of the client. Samples received in good condition unless otherwise noted. This report must not be used to claim product endorsement by NVLAP or any agency of the U.S. Government.

Samples analyzed by EMSL Analytical, Inc. Beltsville 10768 Baltimore Avenue, Beltsville MD NVLAP Lab Code 200293-0



107 Haddon Avenue, Westmont, New Jersey 08108

1-800-220-3675

 190906067
 http://www.emsl.com

EMSL ANALYTICAL, Inc.

CHAIN OF CUSTODY

EMSL Rep:

Third Party Billing requires written authorization from third party

Your Name:

Company:

Street:

Box #:

City/State:

Phone Results to:

Name:

Telephone #:

Project Name/Number:

EMSL-Bill to:

Street:

Box #:

City/State:

Fax Results to:

Name:

Fax #:

Purchase Order #:

TURNAROUND TIME

☐ 3 Hours ☐ 6 Hours ☐ 12 Hours ☐ 24 Hours ☐ 48 Hours ☐ 72 Hours ☐ 4 Days ☒ 5 Days ☐ 6-10 Days

SAMPLE MATRIX

☐ Air ☒ Bulk ☐ Soil ☐ Wipe ☐ Micro-Vac ☐ Drinking Water ☐ Wastewater ☐ Chips ☐ Other

ASBESTOS ANALYSIS

PCM - Air

- ☐ NIOSH 7400 (A) Issue 2: August 1994
☐ OSHA w/TWA

TEM AIR

- ☐ AHERA 40 CFR, Part 763 Subpart E
☐ NIOSH 7402 Issue 2
☐ EPA Level II

PLM - Bulk

- ☒ EPA 600/R-93/116
☐ NY Stratified Point Count
☐ California Air Resource Board (CARB) 435
☐ NIOSH 9002
☐ PLM NOB (Gravimetric) NYS 198.1
☐ EPA Point Count (400 Points)
☐ EPA Point Count (1,000 Points)
☐ Standard Addition Point Count

SOILS

- ☐ EPA Protocol Qualitative
☐ EPA Protocol Quantitative
☐ EMSL MSD 9000 Method fibers/gram
☐ Superfund EPA 540-R097-028 (dust generation)

TEM BULK

- ☐ Drop Mount (Qualitative)
☐ Chatfield SOP-1988-02
☐ TEM NOB (Gravimetric) NY 198.4

TEM MICROVAC

- ☐ ASTM D 5755-95 (Quantitative)

TEM WIPE

- ☐ ASTM D-6480-99
☐ Qualitative

TEM WATER

- ☐ EPA 100.1
☐ EPA 100.2
☐ NYS 198.2

OTHER:

LEAD ANALYSIS

Flame Atomic Absorption

- ☐ Wipe, SW846-7420 ☐ ASTM ☐ non ASTM
☐ Soil, SW846-7420
☐ Air, NIOSH 7082
☐ Chips, SW846-7420 or AOAC 5.009 (974.02)
☐ Wastewater, SW 846-7420
☐ TCLP LEAD SW846-1311/7420

Graphite Furnace Atomic Absorption

- ☐ Air, NIOSH 7105
☐ Wastewater, SW846-7421
☐ Soil, SW846-7421
☐ Drinking Water, EPA 239.2

ICP - Inductively Coupled Plasma

- ☐ Wipe, SW846-6010 ☐ ASTM ☐ non ASTM
☐ Soil, SW846-6010
☐ Air, NIOSH 7300

MATERIALS ANALYSIS

- ☐ Full Particle Identification
☐ Optical Particle Identification
☐ Dust Mites and Insect Fragments
☐ Particle Size & Distribution
☐ Product Comparison
☐ Paint Characterization
☐ Failure Analysis
☐ Corrosion Analysis
☐ Glove Box Containment Study
☐ Petrographic Examination of Concrete
☐ Portland Cement in Workplace Atmospheres (OSHA ID-143)
☐ Man Made Vitreous Fibers - MMVF's
☐ Synthetic Fiber Identification
☐ Other:

MICROBIAL ANALYSIS

Air Samples

- ☐ Mold & Fungi by Air O Cell
☐ Mold & Fungi by Agar Plate count & id
☐ Bacterial Count and Gram Stain
☐ Bacterial Count and Identification

Water Samples

- ☐ Total Coliforms, Fecal Coliforms
☐ Escherichia Coli, Fecal Streptococcus
☐ Legionella
☐ Salmonella
☐ Giardia and Cryptosporidium

Wipe and Bulk Samples

- ☐ Mold & Fungi - Direct Examination
☐ Mold & Fungi - (Culture follow up to direct examination if necessary)
☐ Mold & Fungi - Culture (Count & ID)
☐ Mold & Fungi - Culture (Count only)
☐ Bacterial Count & Gram Stain
☐ Bacterial Count & Identification (3 most prominent types)
☐ Other:

IAQ ANALYSIS

- ☐ Nuisance Dust (NIOSH 0500 & 0600)
☐ Airborne Dust (PM10, TSP)
☐ Silica Analysis by XRD ☐ Niosh 7500
☐ HVAC Efficiency
☐ Carbon Black
☐ Airborne Oil Mist
☐ Other:

Client Sample # (S)

TOTAL SAMPLE #

Relinquished:

Received:

Relinquished:

Received:

Date:

Date:

Date:

Date:

Time:

Time:

Time:

Time:

Page 1 of 2



107 Haddon Avenue, Westmont, New Jersey 08108

1-800-220-3675

http://www.emsl.com

1/3

SAMPLE NUMBER	SAMPLE DESCRIPTION/LOCATION	VOLUME Air (L.)	Area (Inches sq.)
22 SSM 1	Brown Cove Base Mastic	Rm 433	433
2	↓		433
3	↓		200
4	Yellow F1 Mastic	Rm 433	
5	↓	407	
6	↓	342	
7	12x12 Brown Speckled F1d Mastic	Rm 434	
8	↓	↓	
9	↓	↓	
10	Gray Kitchen Sink Coating	434	
11	↓	↓	
12	↓	↓	
13	12x12 Beige F1d Mastic	437	
14	↓	4	
15	↓	423	
16	2x4 Ceiling Tile	C4-2	
17	↓	C4-2	
18	↓	Rm 425	
19	Gray Deck Mastic	C4-2	
20	↓	↓	
21	↓	↓	
22	Exterior Stucco		
23	↓		
24	↓		
25	↓		
26	↓		
27	↓		
28	↓		

Relinquished:
Received:
Relinquished:
Received:

Date:
Date:
Date:
Date:

Time:
Time:
Time:
Time:



107 Haddon Avenue, Westmont, New Jersey 08108

1-800-220-3675

http://www.emsl.com

2/3

SAMPLE NUMBER	SAMPLE DESCRIPTION/LOCATION	VOLUME Air (L)	Area (Inches sq.)
22 55M 29	8" Straight Pipe Insulation	Rm 437	
30	↓ ↓ ↓	↓	
31			
32	Joint/Elbow Compartment	Rm 437	
33	↓	↓	
34			
35	Daywell Joint Compartment	425	
36		425	
37		408	
38		408	
39		122	
40		122	
41		122	
42		122	
43			
44	Black Water Prefing	Rm 411	
45	↓ ↓	411	
46		409	
47	Red Fire Stop	407	
48	↓ ↓	↓	
49			
50	Wall Plaster	Rm 419	
51	↓	↓	
52			
53	Concrete Crack Mortar	↓	
54	↓ ↓ ↓	↓	
55			

Relinquished:
Received:
Relinquished:
Received:

Date:
Date:
Date:
Date:

Time:
Time:
Time:
Time:

FELIX



107 Haddon Avenue, Westmont, New Jersey 08108

1-800-220-3675

http://www.emsl.com

73

SAMPLE NUMBER	SAMPLE DESCRIPTION/LOCATION	VOLUME Air (L)	Area (Inches sq.)
22 SSM 56	Floor Leveling Compound	342	
57	↓ ↓ ↓	↓	
58			
59	Tan Cove Base Mastic on Gray CB		342
60	↓ ↓ ↓	↓	336
61			336
62	Tan Sink Base Coating	330B	
63	↓ ↓ ↓	↓	
64			
65	12x12 Olive/Berge Ffilm	Heil e	325
66	↓ ↓ ↓	↓	
67			
68	12x12 Tan Speck Ffilm	207	
69	↓ ↓ ↓	202 202B	
70		203	
71	12x12 Light Blue Ffilm	215	
72	↓ ↓ ↓	↓	
73			
74	12x12 Light Tan Ffilm	Fayer C1-4	
75	↓ ↓ ↓	↓	
76			
77	Exterior Window Putty		
78	↓ ↓ ↓		
79			

Relinquished:
Received:
Relinquished:
Received:

Date:
Date:
Date:
Date:

Time:
Time:
Time:
Time:

United States Department of Commerce
National Institute of Standards and Technology



Certificate of Accreditation to ISO/IEC 17025:2005

NVLAP LAB CODE: 200293-0

EMSL Analytical, Inc.
Beltsville, MD

*is accredited by the National Voluntary Laboratory Accreditation Program for specific services,
listed on the Scope of Accreditation, for:*

BULK ASBESTOS FIBER ANALYSIS

*This laboratory is accredited in accordance with the recognized International Standard ISO/IEC 17025:2005.
This accreditation demonstrates technical competence for a defined scope and the operation of a laboratory quality
management system (refer to joint ISO-ILAC-IAF Communique dated 18 June 2005).*

2009-01-01 through 2009-12-31

Effective dates



Sally S. Bruce

For the National Institute of Standards and Technology

APPENDIX B
FIELD NOTES

SJM

NO roof sampling per VA
warranty issueInspector _____ Building 22

Sample #	Sample Description	Location/Room #	Damage	Quantity	Notes
1	Brown base board	Rm 433			cove <u>Mastic</u>
2	"	"			"
3	"	Rm 200			"
4	yellow fl Mastic	Rm 433 433			fl fl
5	"	Rm 427			
6	"	Rm 342			
7	Brown speckled floor tile	Rm 433			12x12 w/ green mastic
8	"	"			
9	"	"			
10	Gray kitchen sink coating	Rm 433			
11	"	"			
12	"	"			
13	Beige 12"x12" ft	437			
14	"	4			
15	"	Hallway 423			
16	2x4 Ceiling tile	C4-2 423			
17	"	C4-2			
18	"	Rm 425			
19	Gray duct Mastic	C4-2			
20	"	"			
21	"	"			
22	Exterior stucco	Ext			} See plan
23	"	Ext			
24	"	Ext			
25	"	Ext			
26					
27					
28					
29	8" Straight Deck	Rm 437			Pipe insulation
30	"	"			↓ 3 437?
31	"	"			

Date 6/17/09Page 1 of 3

SJM

Inspector _____ Building 22

Sample #	Sample Description	Location/Room #	Damage	Quantity	Notes
32	Joint/Elbow Compound	Rm 437			8" pipe
33	"	↓			↓
34	"				
35	Dry wall	Rm 425			JOINT Comp.
36	"	"			"
37	"	408			"
38	"	408			"
39	"	122			
40	"	122			
41	"	122			
42	"	122			
43					
44	Black Water Proofing	Rm 411			on Exterior brick
45	"	411			"
46	"	409			"
47	REA FIRE STOP	Rm 407			
48	"	"			
49	"	"			
50	WALL PLASTER	Rm 419			OVERHUNG DECK
51	"	"			
52	"	"			
53	CONCRETE CRACK MASTIC	Rm 419			CILING DECK
54		"			"
55		"			"
56	FLOOR LEVELING COMD	Rm 342			
57	"	"			
58	"	"			
59	TAN MASTIC	Rm 342			BEHIND GREY BASEBOARD
60	"	Rm 336			"
61	"	Rm 336			"

Date 6/17/09Page 2 of 3

Inspector _____ Building 22

[illegible]

Date 6/17/09

Page 3 of 3