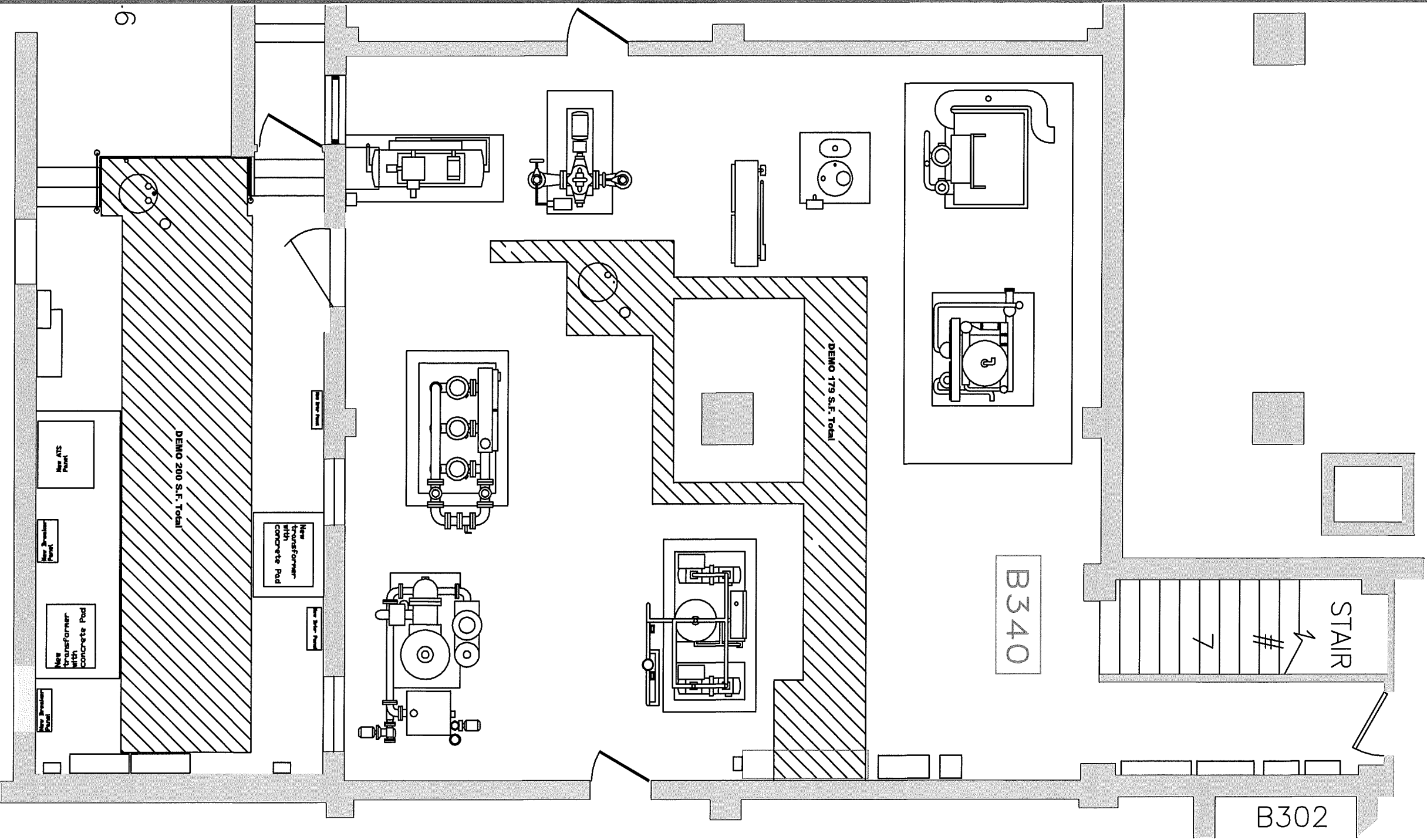


Existing Floor plan
 DRAWING SCALE : 1/8" = 1'-0"



Demolition Notes

- 1. Protect existing equipment from Damage during all phases of work.
- 2. Coordinate dumpster location and route to work area with JBVAMC project manager.
- 3. Disconnect all related plumbing and electrical connections in area.
- 4. Saw cut marked area (Approx. 379 S.F.) for removal during day time normal work hours. Provide barrier to keep dust and debris confined to work area.
- 5. Remove concrete and dispose off site.
- 6. Supply temporary de-watering system during construction.
- 7. Excavate soil for installation of sump pit, drainage tile and gravel.
- 8. Remove existing pump, pit and floor drain and dispose off site.

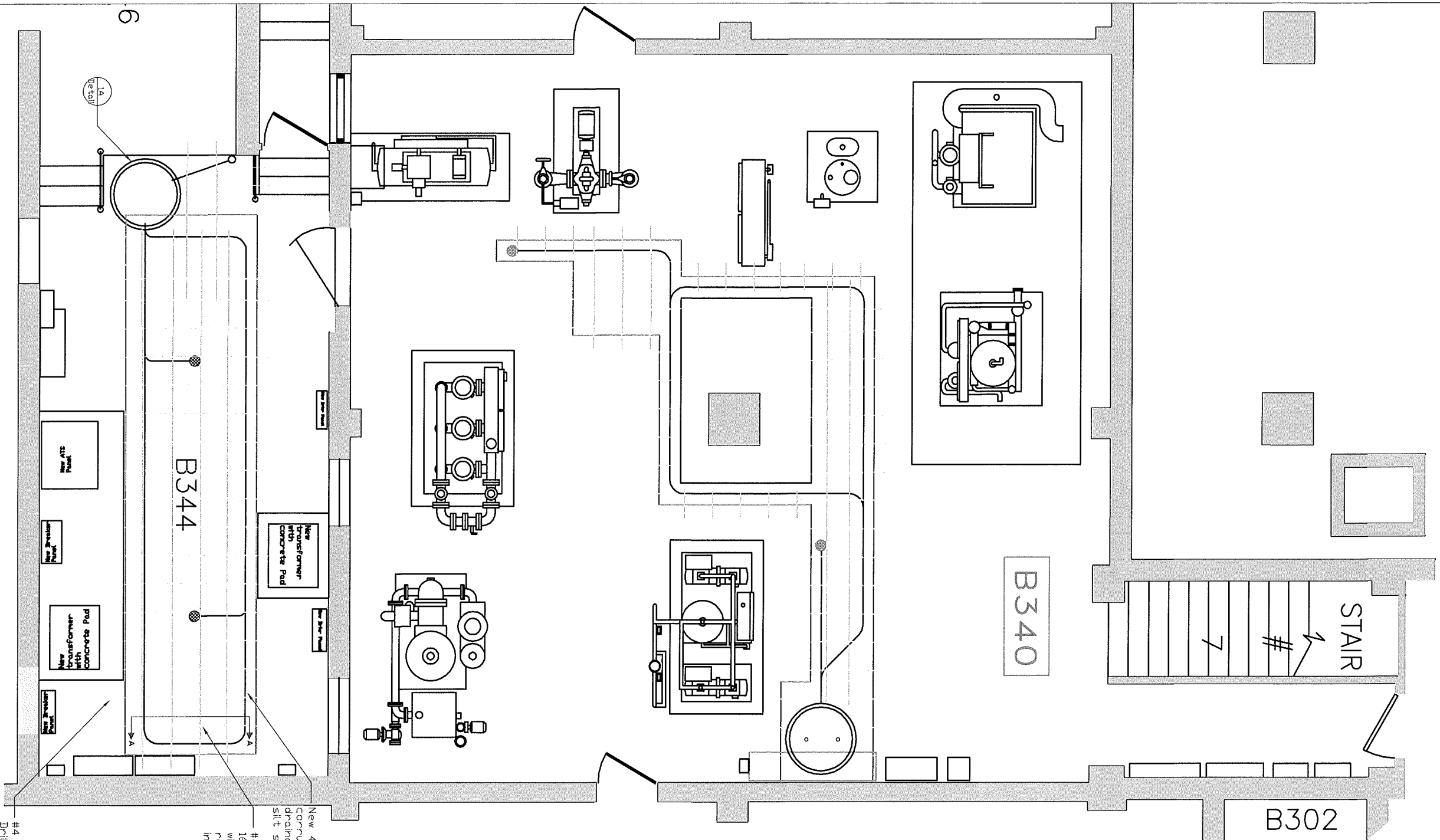


52

B350

New Floor Plan

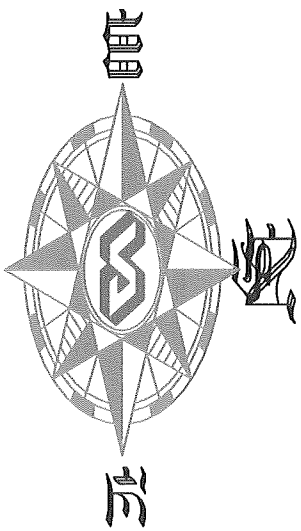
DRAWING SCALE : 1/4" = 1'-0"

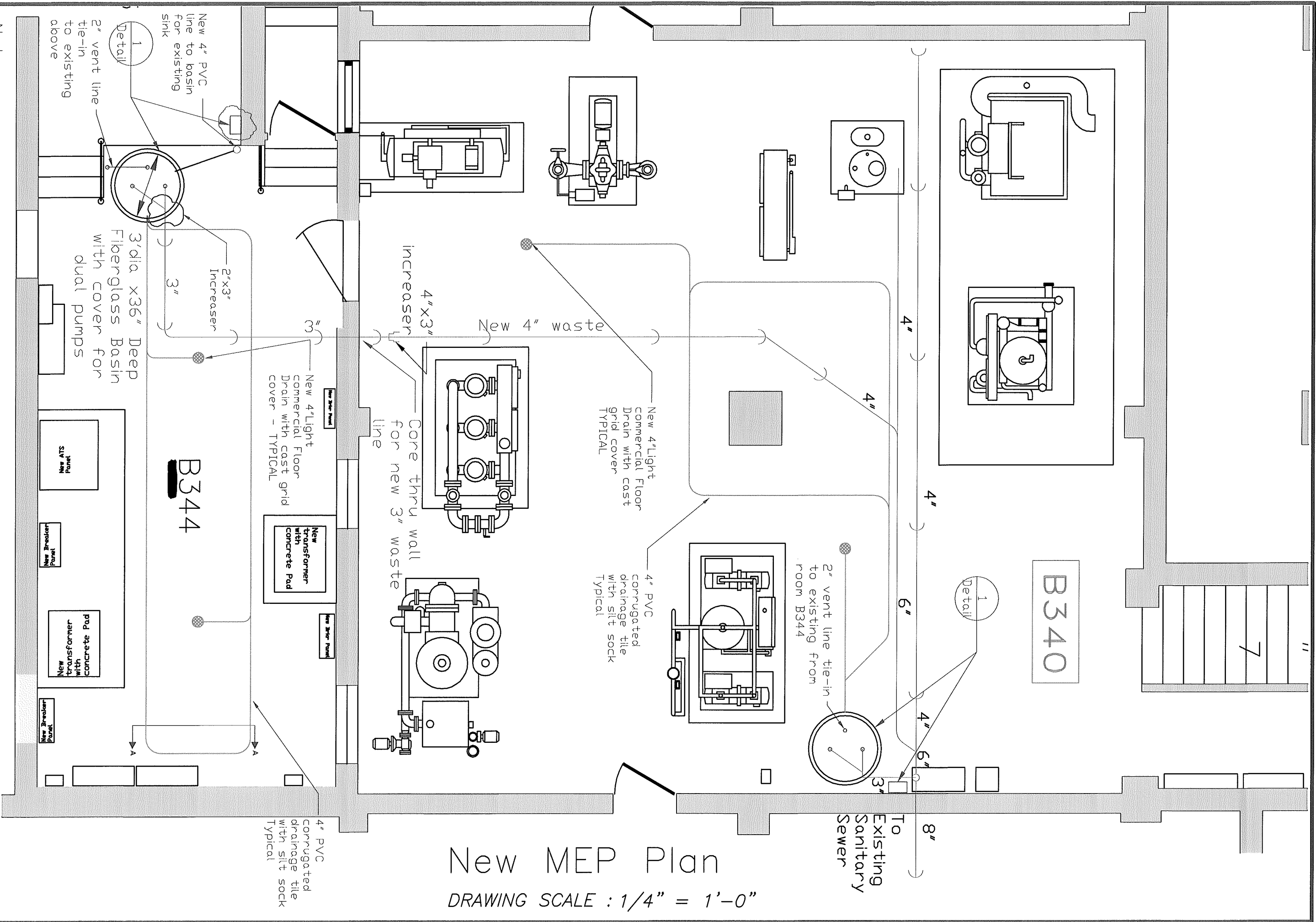


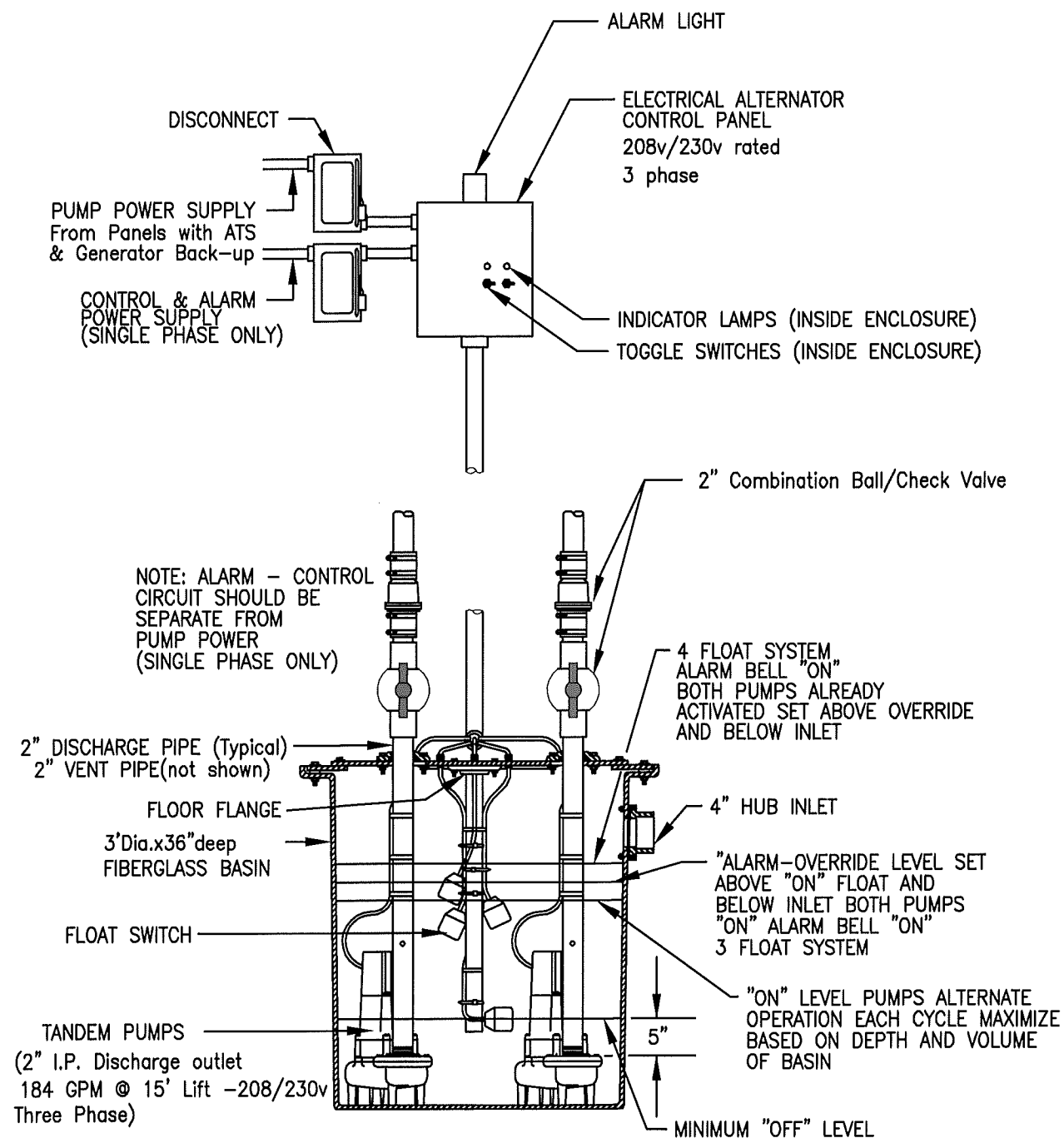
New 4" PVC
corrugated tile with
slit sock Typical

#4 re-bar grid
16'x16' pattern
wire tie to
rebar sections
in slab - Typical

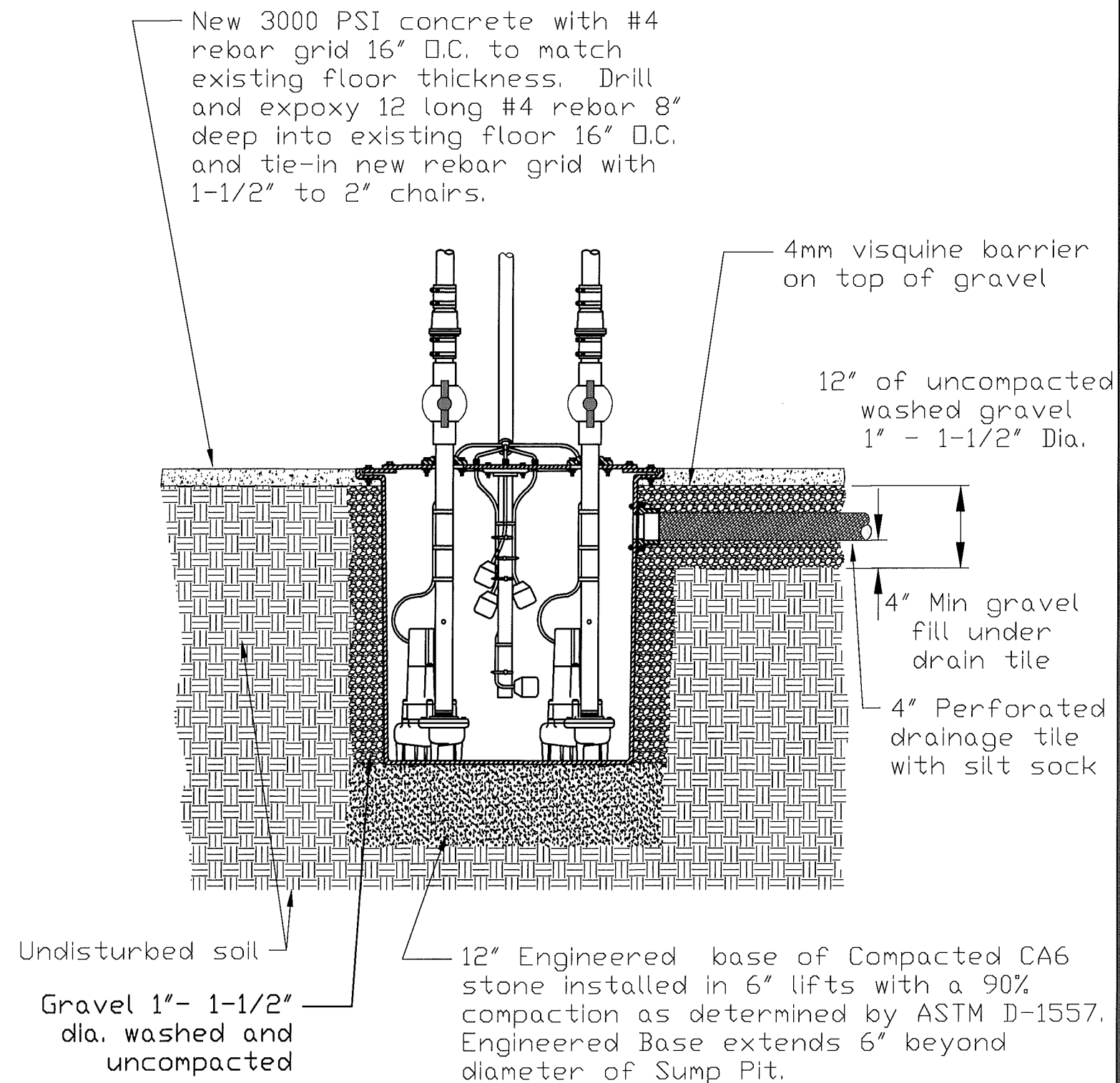
#4 rebar 16' long
Drill and insert
center of existing
slab thickness, 8"
deep Epoxy in place
16' x16' typical
(44pcs)



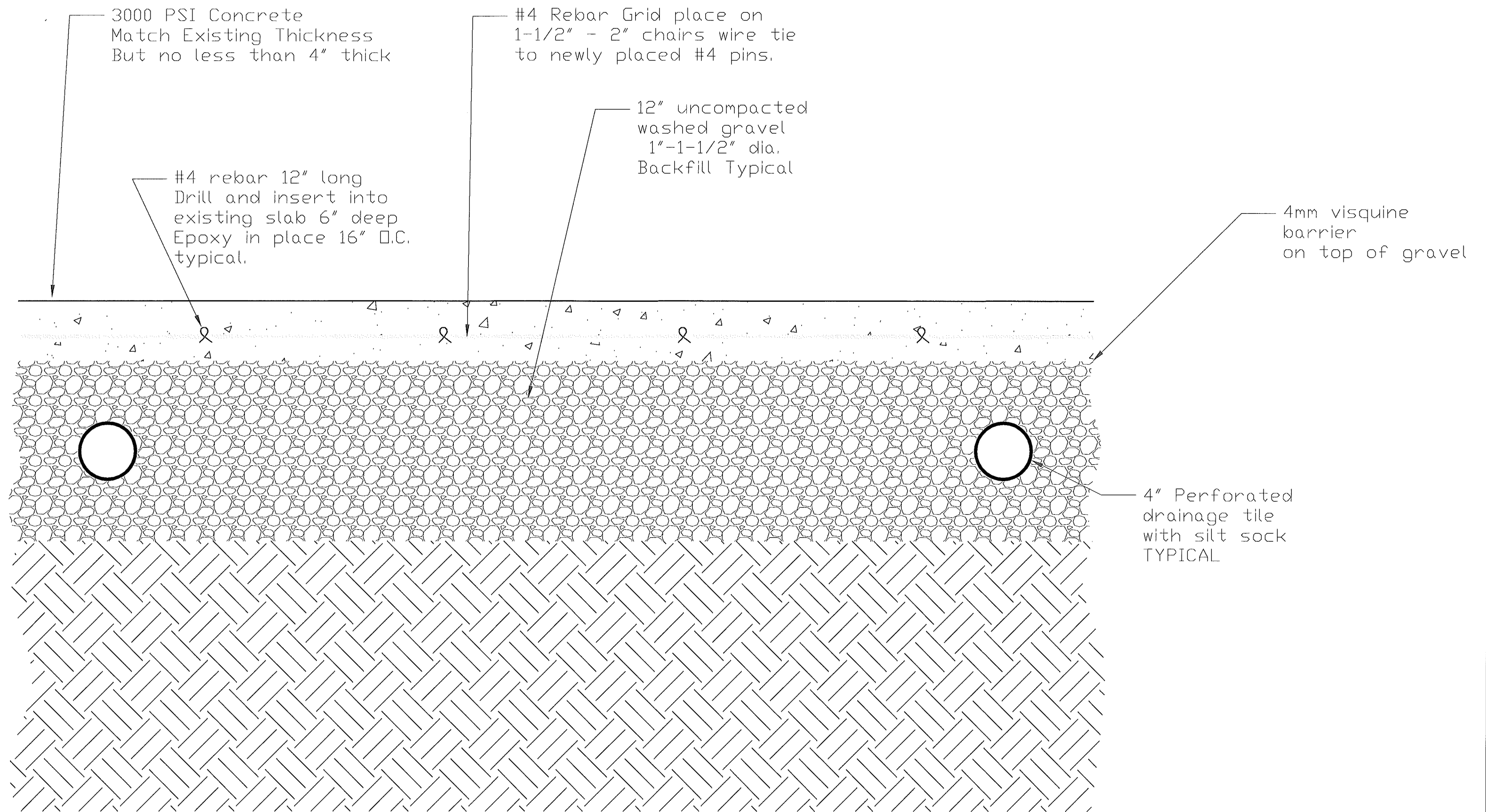




① Detail - Pit and pump Assy.
Not to Scale



①A Detail - Pit and pump Assy.
Installation Per MFG Recommendations
Not to Scale



Section A-A Not to Scale

