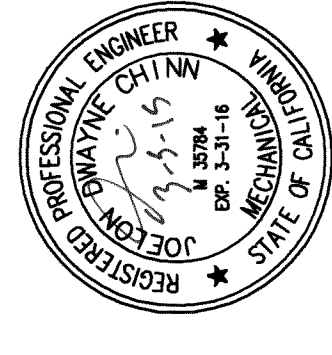
[illegible]

CONSULTANTS:
100% CONSTRUCTION DOCUMENTS



ARCHITECT/ENGINEERS:

TETER, LLP
7535 N. PALM AVE. 201 | FRESNO, CA 93711 | 559.437.0887
123 S. BRIDGE ST. 150 | VISALIA, CA 93291 | 559.625.5246
1200 DISCOVERY DR. 1601 | BAKERSFIELD, CA 93309 | 661.863.9600
1130 K STREET 225 | SACRAMENTO, CA 95814 | 916.538.6262

ARCHITECTS ENGINEERS CONNECTED

ARCHITECTS ENGINEERS CONNECTED

Project No. 13-9111.00

Drawing Title
PROPOSED MECHANICAL FIFTH FLOOR

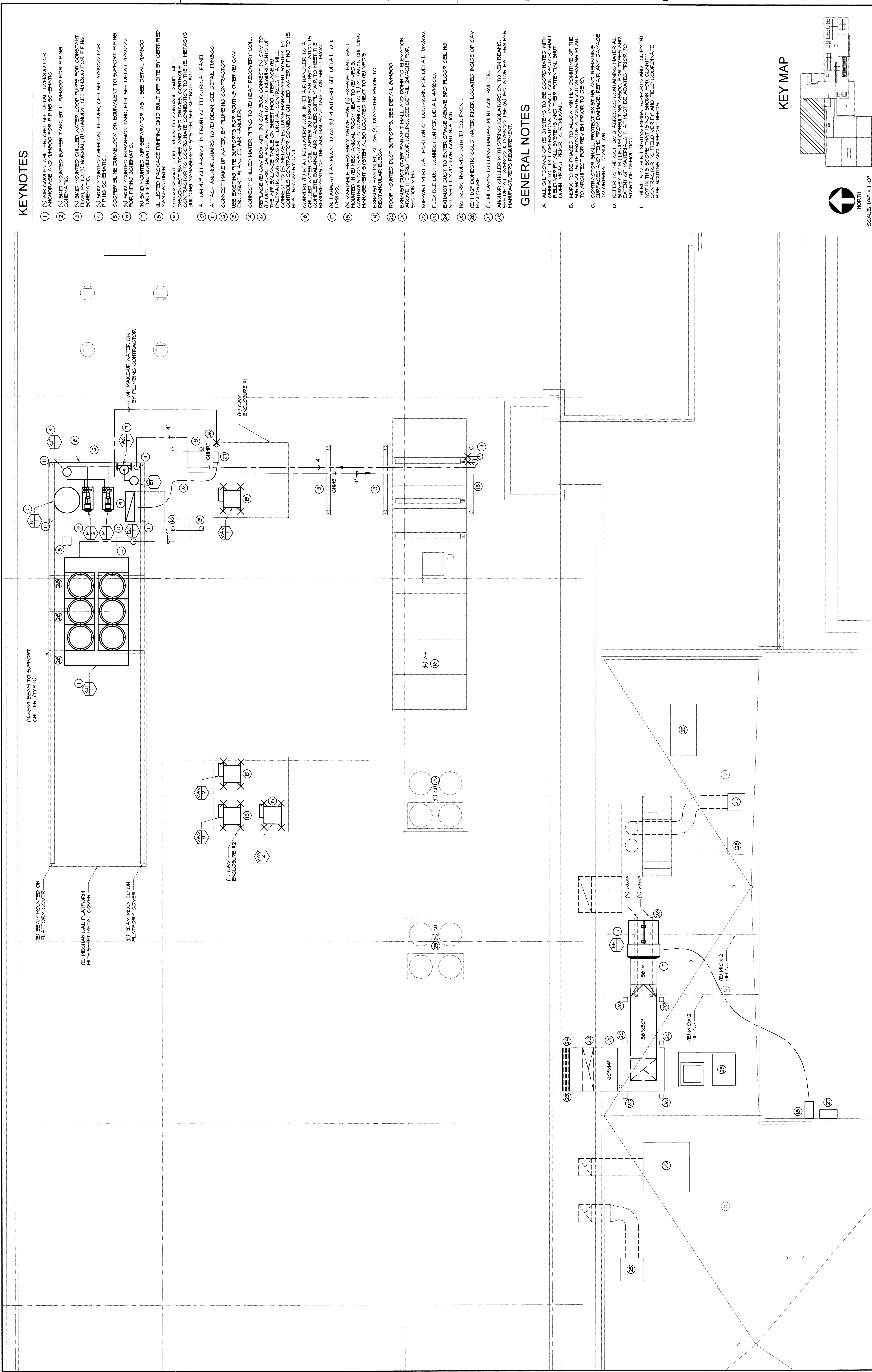
Project Title	VA REPL
---------------	---------

Project Number	570-13-211
----------------	------------

Office of
Construction
and Facilities
Management



Department of
Veterans Affairs



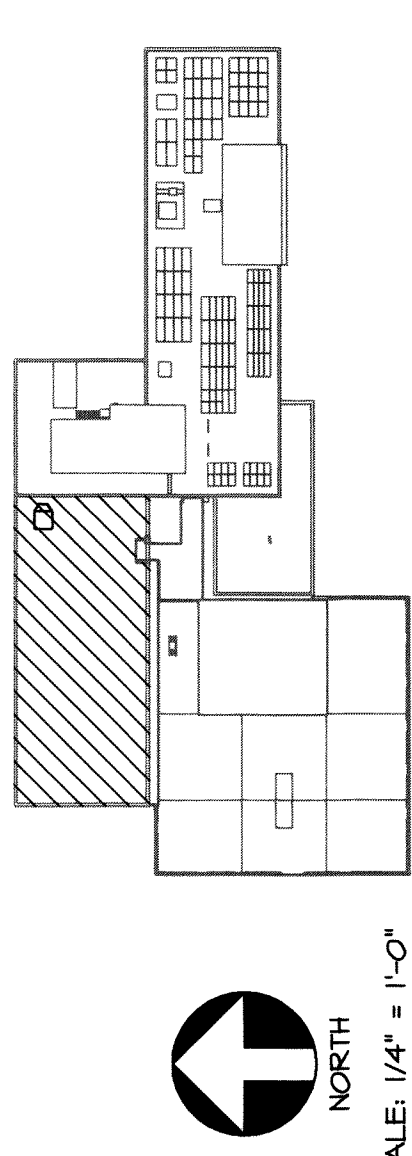
KEYNOTES

- 1 AIR COOLED CHILLER, CH-1. SEE DETAIL 12MB00 FOR ANCHORAGE AND 4MB00 FOR PIPING SCHEMATIC.
- 2 N-1 SCID MOUNTED BUFFER TANK, BT-1. 4MB00 FOR PIPING SCHEMATIC.
- 3 N-1 SCID MOUNTED CHILLED WATER LOOP PUMPS FOR CONSTANT FLOW. (2) IN NORMAL, (1) STANDBY. SEE 4MB00 FOR PIPING SCHEMATIC.
- 4 N-1 SCID MOUNTED CHEMICAL FEEDER, CF-1. SEE 4MB00 FOR PIPING SCHEMATIC.
- 5 COOPER BLUE DURALOC, OR EQUIVALENT TO SUPPORT PIPING.
- 6 N-1 SCID MOUNTED EXPANSION TANK, ET-1. SEE DETAIL 4MB00 FOR PIPING SCHEMATIC.
- 7 N-1 SCID MOUNTED AIR SEPARATOR, AS-1. SEE DETAIL 4MB00 FOR PIPING SCHEMATIC.
- 8 N-1 LUSTED PACKAGE PUMPS SCID BUILT OFF SITE BY CERTIFIED MANUFACTURER.
- 9 OUTDOOR WATER SPLIT WATERED CONDENSER PANEL WITH DISCONNECT SWITCHES AND VFD DRIVES, CONTROLS CONTRACTOR TO COORDINATE CONNECTIONS TO THE RE/HETAS'S BUILDING MANAGEMENT SYSTEM. SEE REMOTE V-21.
- 10 ALLOW 42" CLEARANCE IN FRONT OF ELECTRICAL PANEL.
- 11 ATTACH ANCHOR CHAIRS TO RE BEAM, SEE DETAIL 17MB00.
- 12 CONNECT MAKE UP WATER BY PUMPING CONTRACTOR.
- 13 USE EXISTING PIPE SUPPORTS FOR ROUTING OVER RE/CAV ENCLOSURE #1 AND RE AIR HANDLER.
- 14 CONNECT CHILLED WATER PIPING TO RE/HET RECOVERY COIL.
- 15 REFERENCE AIR BOX WITH AIR BOX CONNECTIONS TO RE/CAV TO THE AIR BALANCE TABLE ON SHEET 000. REPLACE (2) RE/CAV AIR BALANCE TABLES WITH (2) RE/CAV AIR BALANCE TABLES. CONTRACTOR TO COORDINATE CONNECTIONS TO THE RE/HETAS'S BUILDING MANAGEMENT SYSTEM BY CONTROLS CONTRACTOR. CONNECT CHILLED WATER PIPING TO RE/HET RECOVERY COIL.
- 16 CONVERT RE/HET RECOVERY COIL IN RE AIR HANDLER TO A COMPLETE BALANCE AIR BALANCE TABLE ON SHEET 000. THE RE/CAV AIR BALANCE TABLES ARE TO MEET THE REQUIREMENTS OF THE AIR BALANCE TABLE ON SHEET 000.
- 17 N-1 EXHAUST FAN MOUNTED ON (N) PLATFORM. SEE DETAIL 10 4 17MB00.
- 18 N-1 VARIABLE FREQUENCY DRIVE FOR N-1 EXHAUST FAN WALL CONTROLS CONTRACTOR TO CONNECT TO RE/HETAS'S BUILDING MANAGEMENT SYSTEM ALSO LOCATED NEXT TO (2) VFD'S.
- 19 EXHAUST FAN INLET, ALLOW (4) DIAMETER PRIOR TO RECTANGULAR ELBOW.
- 20 ROOF MOUNTED DUCT SUPPORTS. SEE DETAIL 8MB00.
- 21 EXHAUST DUCT OVER PARAPET WALL AND DOWN TO ELEVATION ABOVE THE 3RD FLOOR CEILING. SEE DETAIL 24MB01 FOR SECTION VIEW.
- 22 SUPPORT VERTICAL PORTION OF DUCTWORK PER DETAIL 7MB00.
- 23 FLEXIBLE DUCT CONNECTION PER DETAIL 4MB00.
- 24 EXHAUST DUCT TO ENTER SPACE ABOVE 3RD FLOOR CEILING. SEE SHEET 2402 FOR CONTINUATION.
- 25 NO WORK INVOLVED WITH RE/CAV EQUIPMENT.
- 26 (1) 1/2" DOMESTIC COLD WATER RISER LOCATED INSIDE OF CAV ENCLOSURE.
- 27 RE/HETAS'S BUILDING MANAGEMENT CONTROLLER.
- 28 ANCHOR CHILLERS WITH SPRINGS ISOLATORS ON TO NEW BEAMS. SEE DETAIL 12MB00 FOR ANCHORAGE AND 16MB00 FOR MANUFACTURING REQUIREMENT.

GENERAL NOTES

- A. ALL SHUTDOWNS OF THE JET SYSTEMS TO BE COORDINATED WITH THE OPERATIONS SUPERVISOR. THE SUPERVISOR SHALL BE ADVISED OF THE SHUTDOWNS AND THE REASON FOR THE SHUTDOWNS AT LEAST 24 HOURS BEFORE THE SHUTDOWNS. THE SUPERVISOR SHALL DOWN INJECT PUMP TO ZERO.
- B. WORK TO BE PHASED TO ALLOW MINIMUM DOWNTIME OF THE PHYSICAL SUEDE PROVIDE A CONSTRUCTION PHASING PLAN TO ASSIST WITH THE SUEDE PUMP TO ZERO.
- C. THE SUEDE PUMP SHALL BE MAINTAINED IN A CLEAN, WORKING SURFACE AND ITEMS FROM THE SUEDE PUMP BEING ANY DAMAGE TO ORIGINAL CONDITION.
- D. REFER TO THE OCT 2012 ASBESTOS CONTAINING MATERIAL SHOWN BY MILLINEX CONSULTING ASSOC. FOR TYPES AND LOCATIONS OF ASBESTOS CONTAINING MATERIAL BEING REMOVED FOR START OF DEVAL.
- E. THERE IS OTHER EXISTING PIPING, SUPPORTS AND EQUIPMENT IN THIS SCORE THAT IS NOT SHOWN FOR CLARITY. THE OPERATIONS SUPERVISOR SHALL BE NOTIFIED OF ALL FIELD COORDINATE PIPE ROUTING AND SUPPORT NEEDS.

KEY MAP



SCALE: 1/4" = 1'-0"