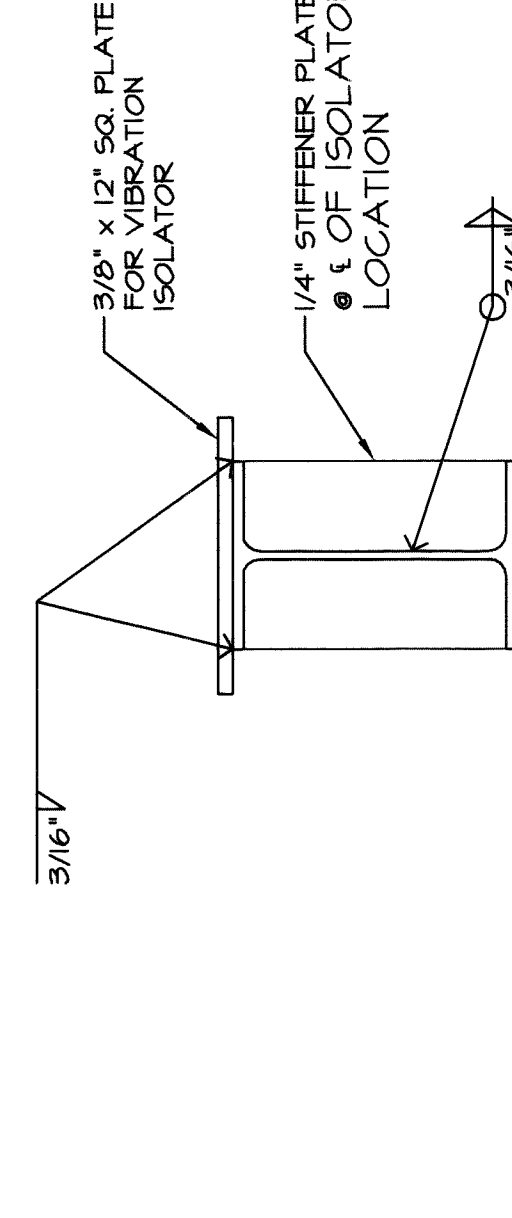


HANGER STRAPS OR RODS		
MAX. HALF OF DUCT PERMITTER	PAIR AT 8FT SPACING	
	STRAP	WIRE/ROD
P/2 = 30"	1" x 22 6A	1/4"
P/2 = 12"	-	1/4"
P/2 = 46"	-	3/8"
P/2 = 120"	-	3/8"

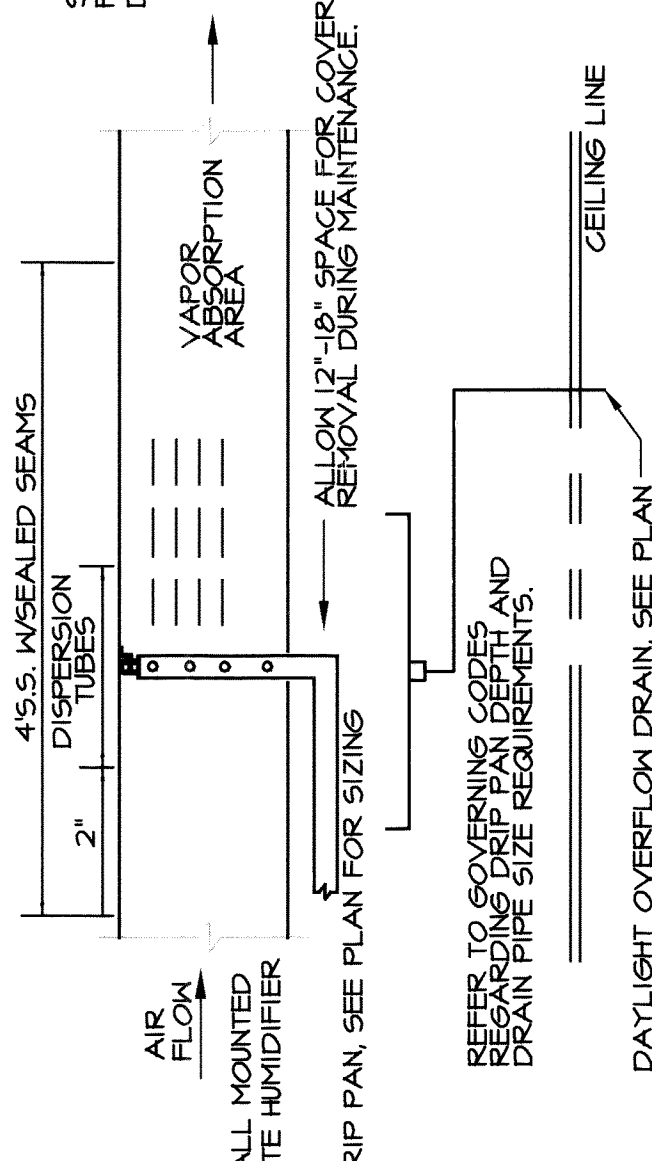
NOTES:

1. TABULATED DATA FROM SMACNA ALLOWS FOR DUCT REINFORCING AND INSULATION, BUT NO EXTERNAL LOAD.
2. POWDER DRIVEN ANCHORS INTO STRUCTURE ARE NOT ALLOWED. ALL ANCHORAGES AND ATTACHMENTS INTO CONCRETE SHALL BE DRILLED IN ANCHORS.

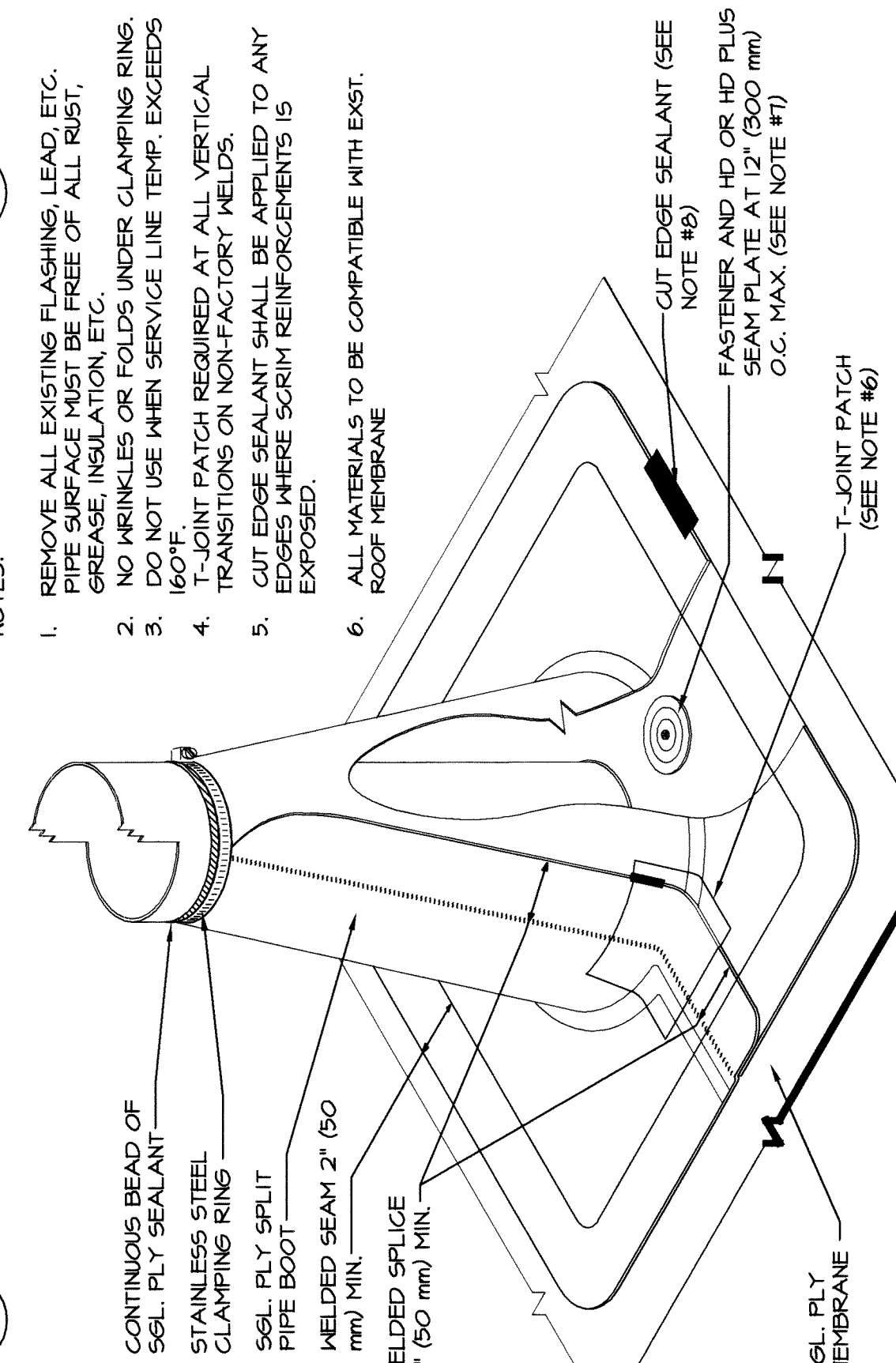
## 18 CHILLER SUPPORT BEAM TO EXIST'G RAIL



14 SPRING ISOLATOR

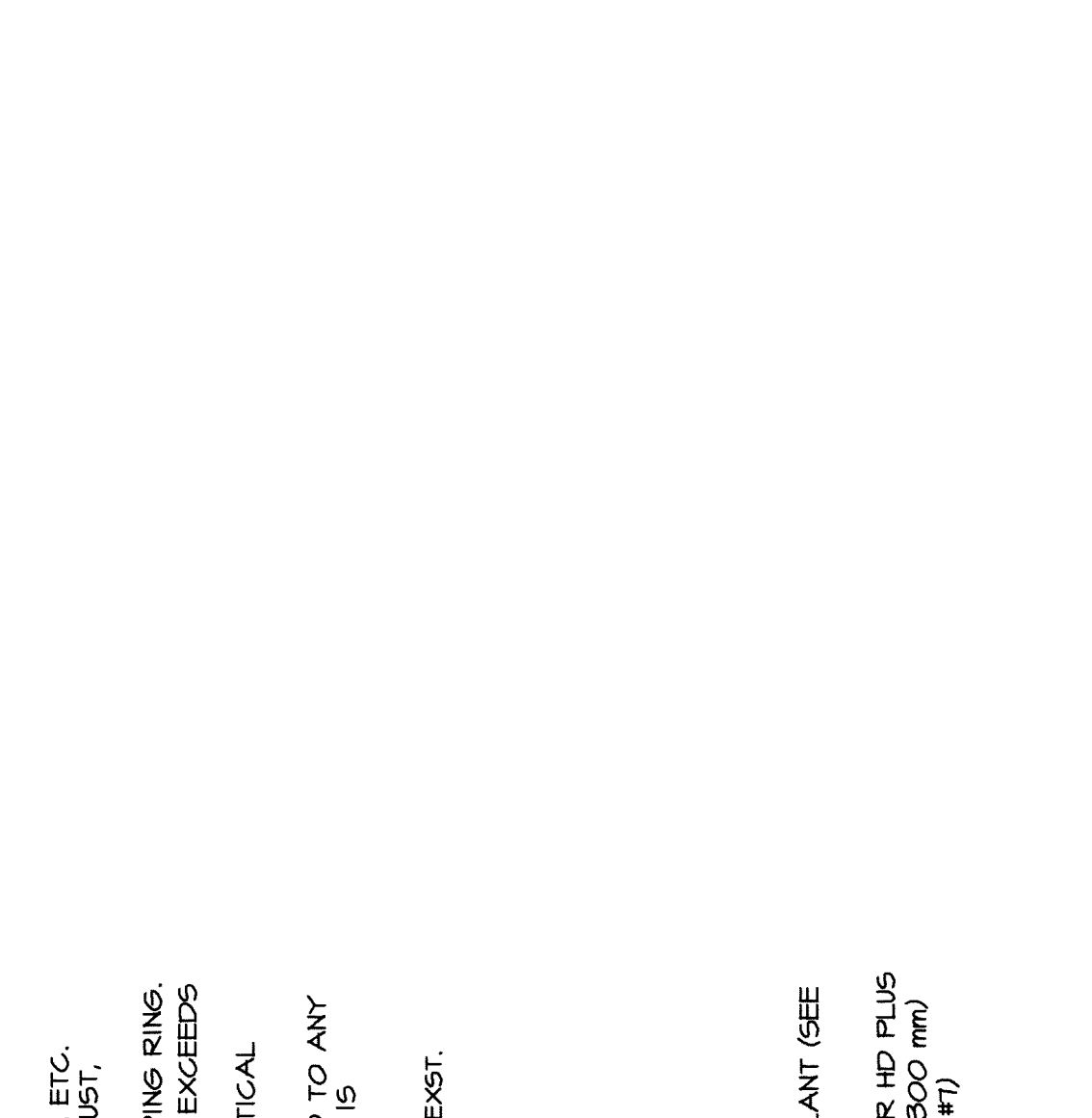
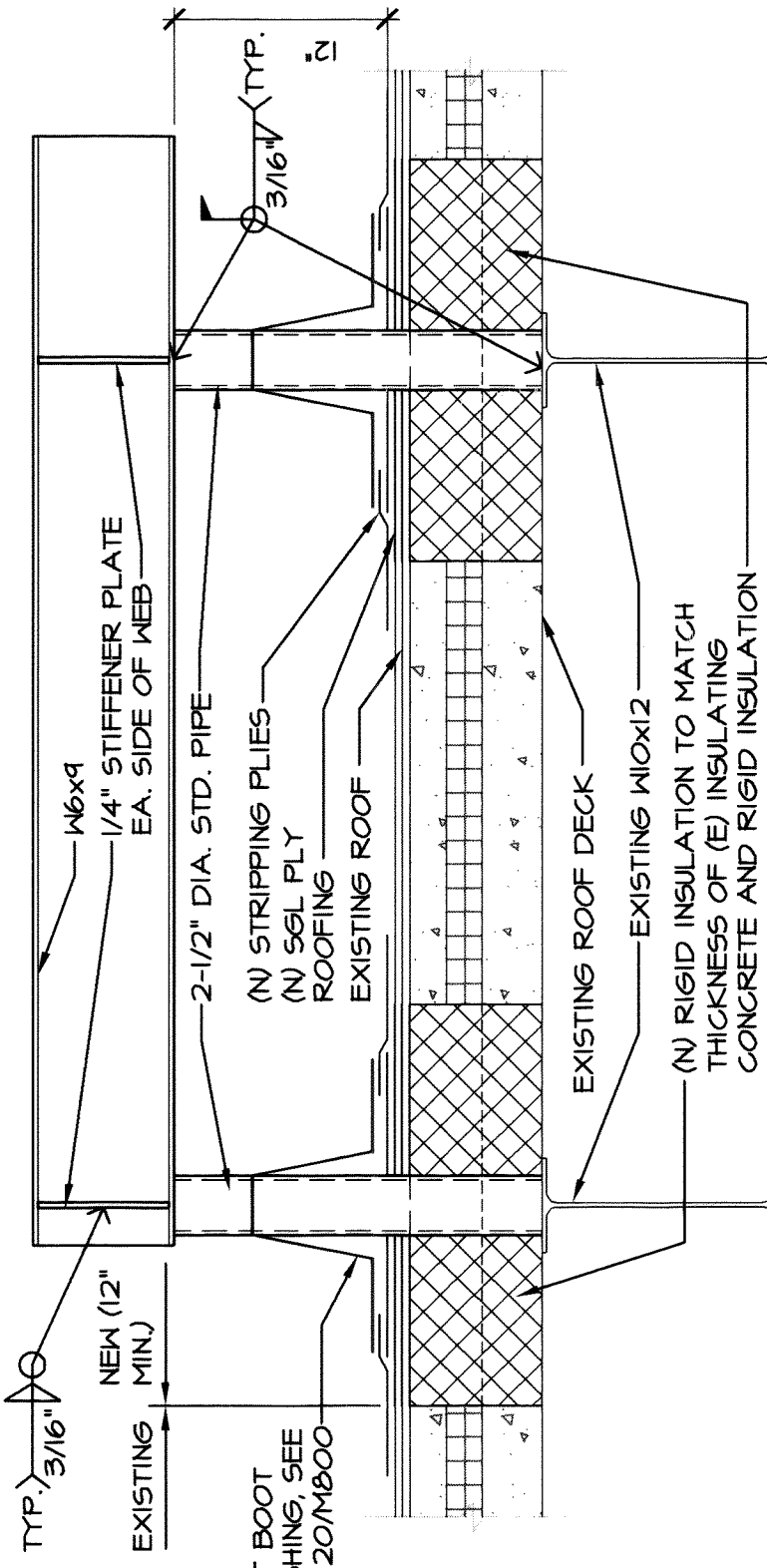


10 ISOLATOR PLATE TO SUPPORT BM.

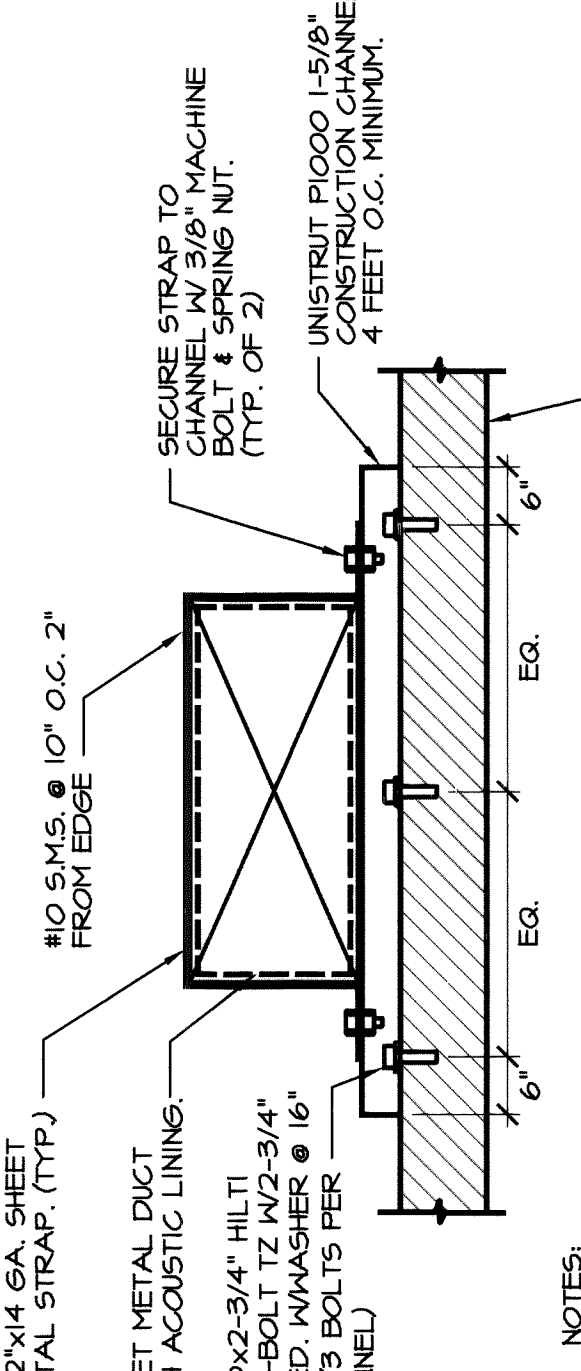


20 PIPE FLASHING

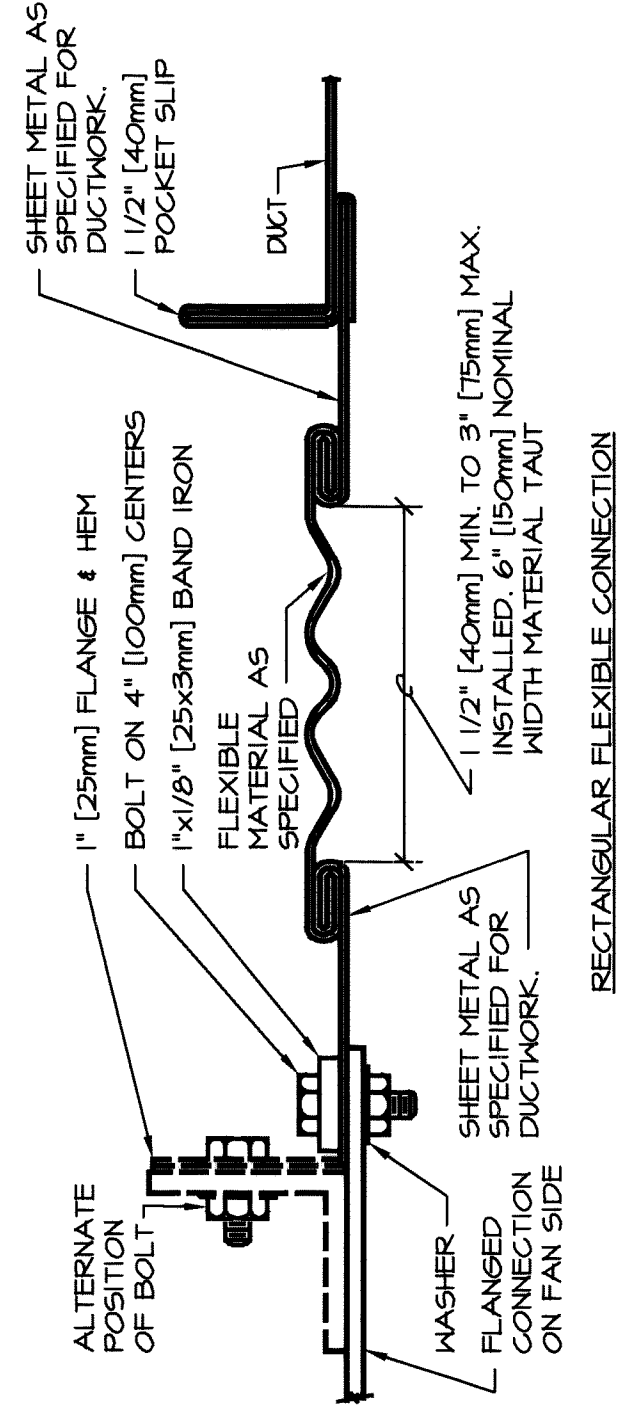
## 15 STEAM HUMIDIFIER INSTALLATION

11  
EQUIPMENT PLATFORM - STEEL

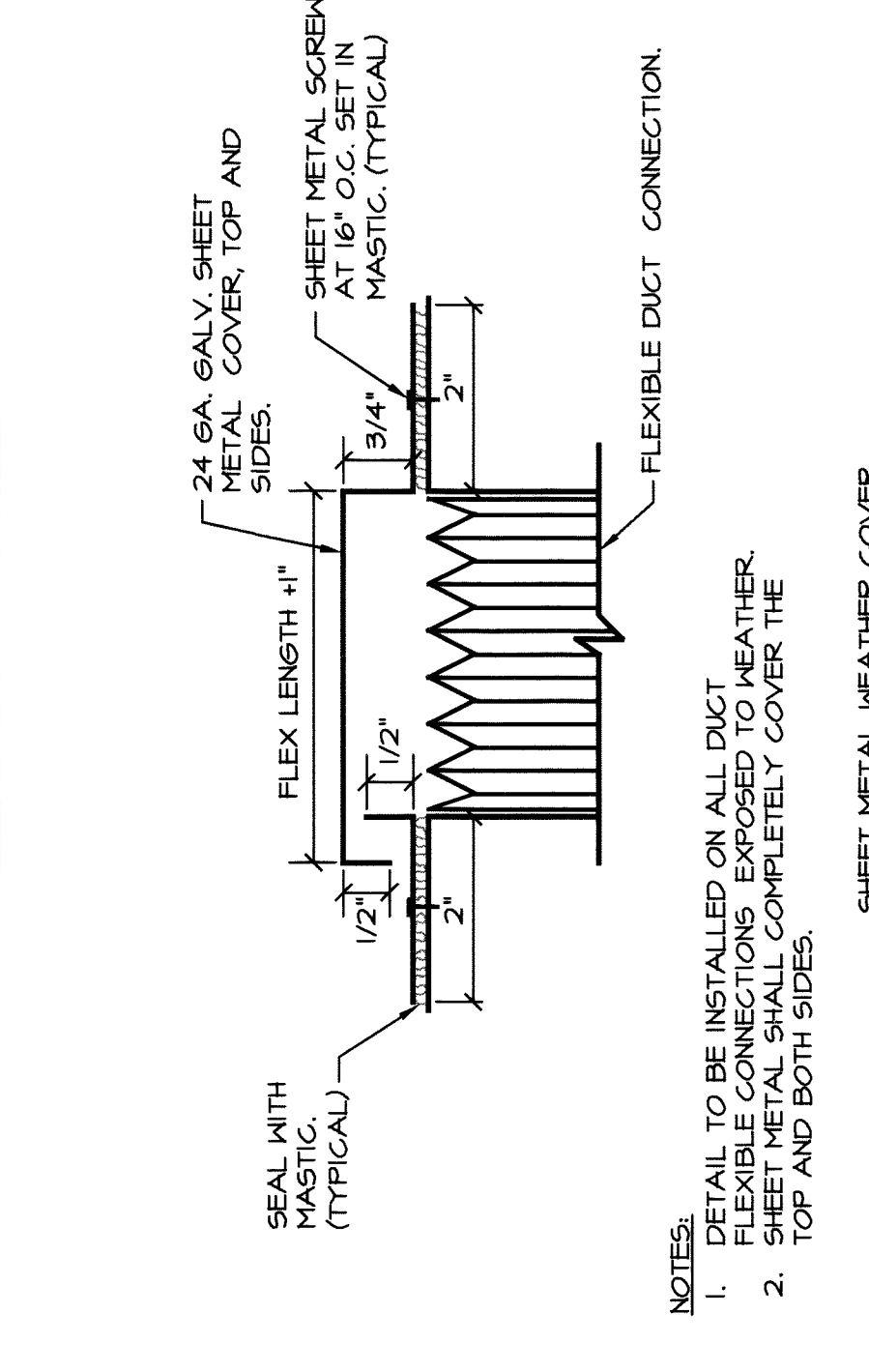
## 7 DUCT ON WALL SUPPORT



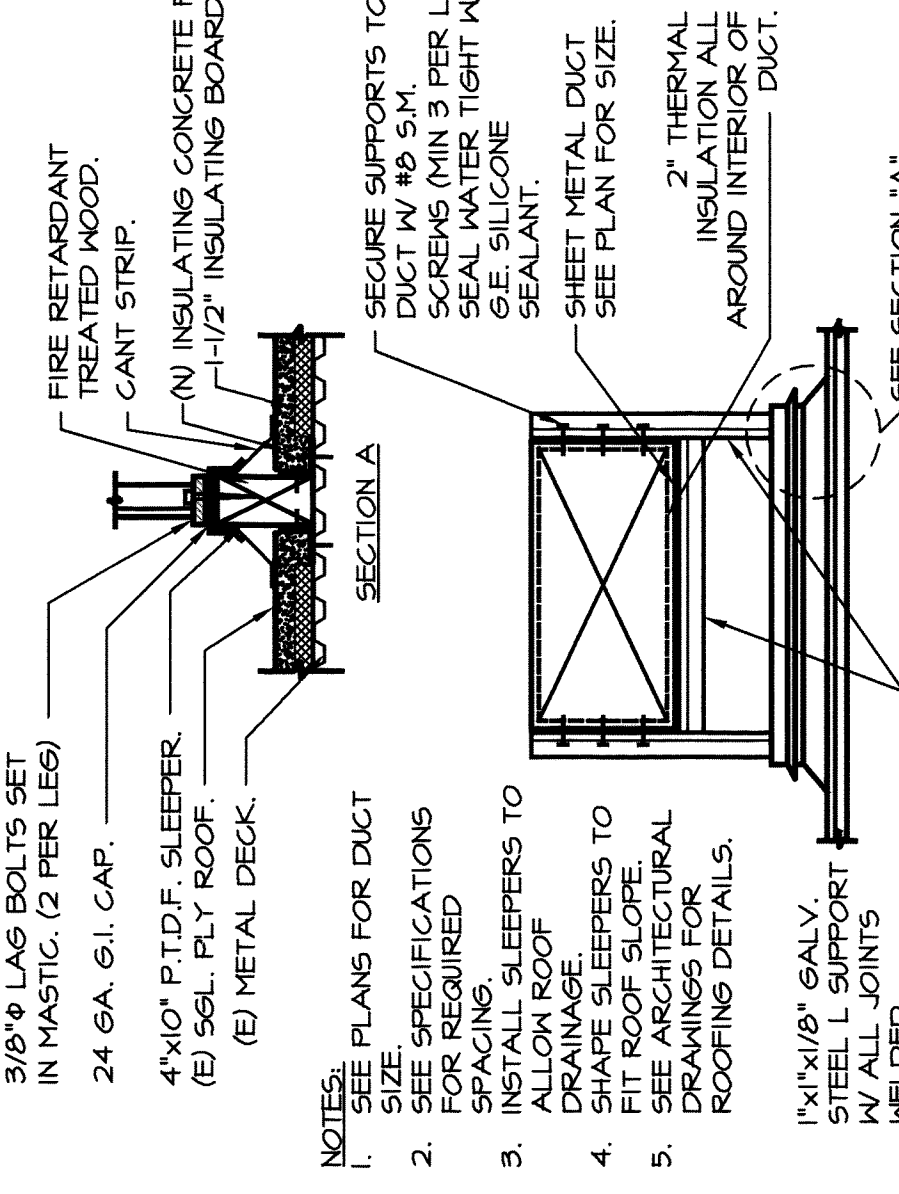
Technical drawing of a corner joint. A vertical rod has a hook at its end. A horizontal rod has a pin at its end. The two rods meet at a right angle, forming a corner joint.



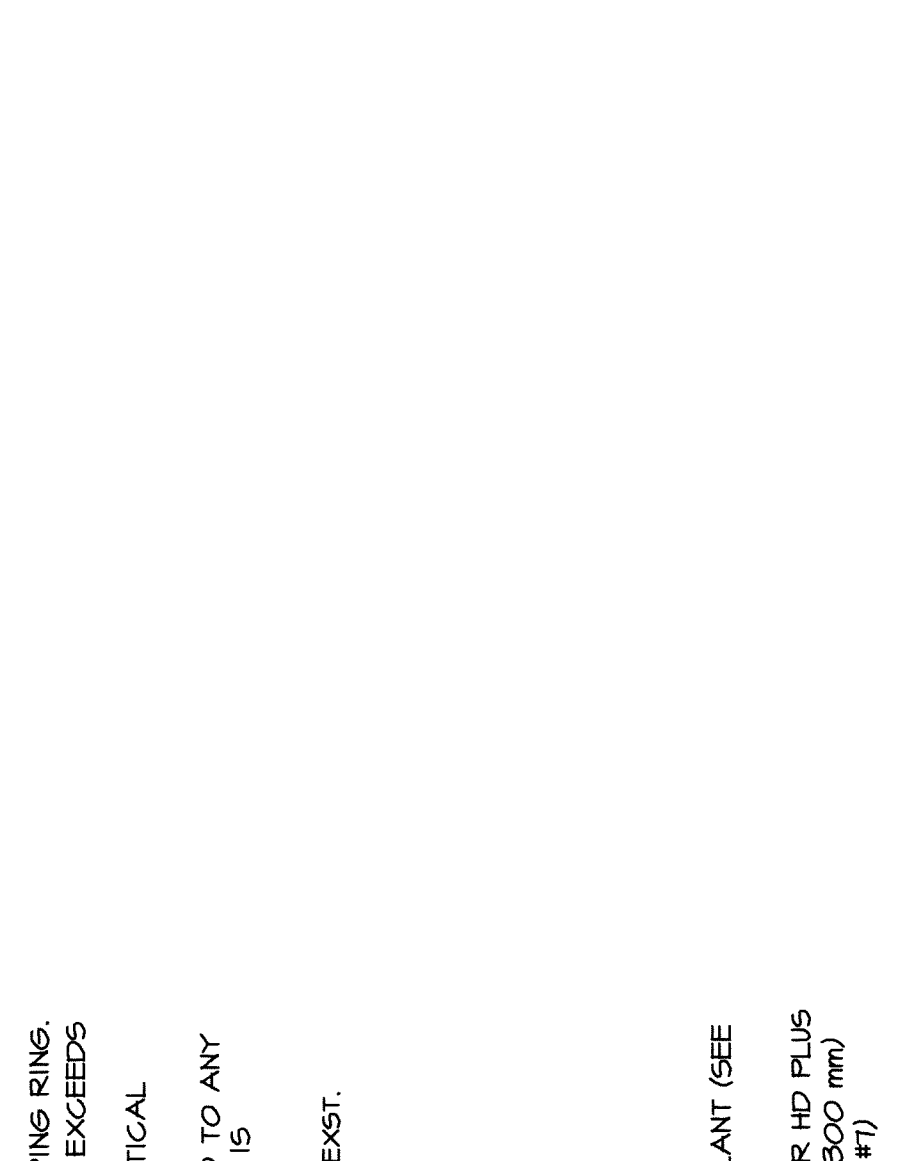
LINE



DUCT ON ROOF - INTERNAL INSULATION



— 1-JOINT PATCH  
(SEE NOTE #6)

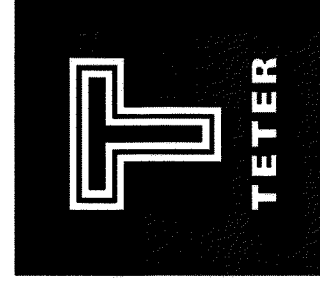


CONSULTANTS:
100% CONSTRUCTION DOCUMENTS

DESIGN CONSTRUCTION DOCUMENTS (1000)	3-5-15
DESIGN CONSTRUCTION DOCUMENTS (900)	12-8-14
CONSTRUCTION DOCUMENTS (400)	10-27-14

Project No. 13-9111.00

ARCHITECT/ENGINEERS:



**TETER, LLP**  
7535 N. PALM AVE., 201 | FRESNO, CA 93711 | 559.437.0887  
125 S. BRIDGE ST. 150 | VISALIA, CA 93271 | 559.625.5246  
1200 DISCOVERY DR., 140 | BAKERSFIELD, CA 93309 | 661.843.8400  
1130 K STREET 225 | SACRAMENTO, CA 95814 | 916.538.6262

1130 K STREET 225 | SACRAMENTO, CA 95814 | 916.538.6262

Project Title	VA REPLACE SURGERY
---------------	--------------------

Office of  
Construction  
and Facilities  
Management

Location	FRESNO, CA		
Date	3-5-15	Checked	Drawn