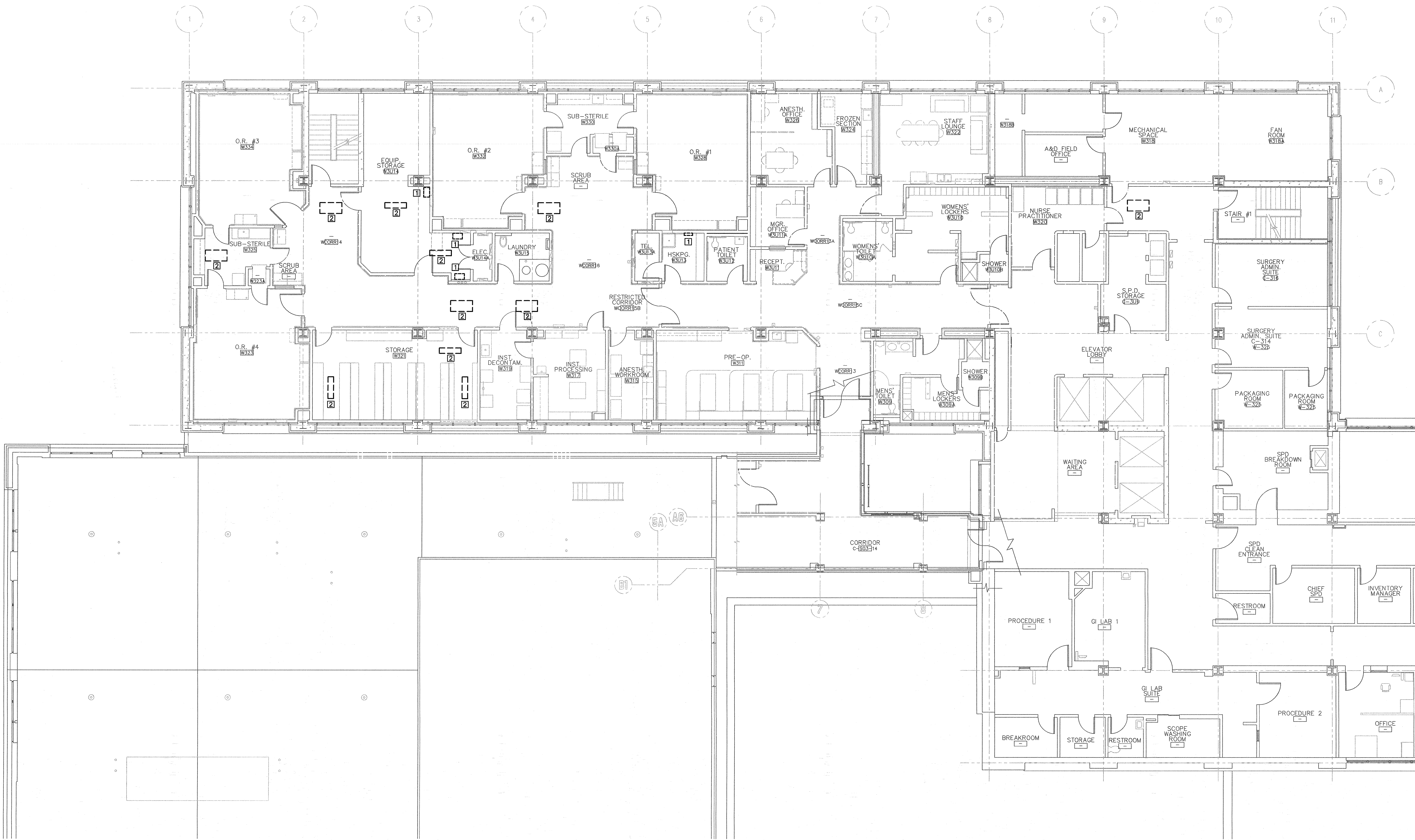


one eighth inch = one foot  
one quarter inch = one foot  
one half inch = one foot  
three eighths inch = one foot  
one inch = one foot  
one and one half inches = one foot  
two inches = one foot  
three inches = one foot

3-05-15 12:19:16 PM pc7

DEMOLITION NOTES:

- 1 (E) HUMIDIFIER TO BE REPLACED. DISCONNECT (E) ELECTRICAL CIRCUIT AND PROTECT FOR CONNECTION TO (N) HUMIDIFIER.  
2 REMOVE (E) LIGHT FIXTURE. STORE AND PROTECT FOR REINSTALLATION. ANY FIXTURE THAT BECOME DAMAGED SHALL BE REPLACED WITH NEW BY THE CONTRACTOR.



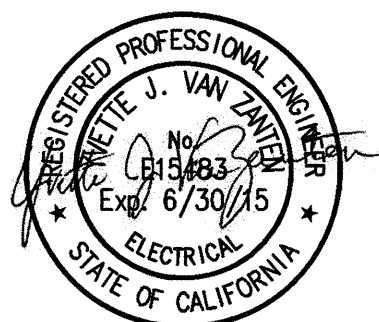
FLOOR PLAN - ELECTRICAL DEMOLITION

SCALE: 1/8" = 1'-0"



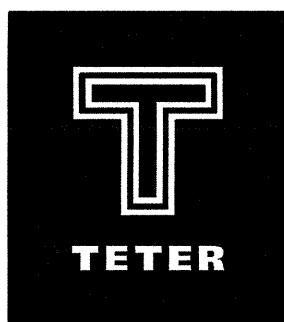
CONSULTANTS:

**CHARLES A. MARTIN AND ASSOCIATES**  
CONSULTING ELECTRICAL ENGINEERS  
2730 C Street, Sacramento, CA 95816-3215, tel: 916-442-0416  
CAMA JOB #: 4592



ARCHITECT/ENGINEERS:

Project No. 13-9111.00



**TETER, LLP**  
7535 N. PALM AVE. 201 | FRESNO, CA 93711 | 559.437.0887  
125 S. BRIDGE ST. 150 | VISALIA, CA 93291 | 559.425.5244  
1200 DISCOVERY DR. 160 | BAKERSFIELD, CA 93309 | 441.843.8400  
1130 K STREET 225 | SACRAMENTO, CA 95814 | 916.538.6242  
ARCHITECTS ENGINEERS CONNECTED

Drawing Title  
FLOOR PLAN - ELECTRICAL DEMOLITION

Approved: Project Director

Project Title  
VA REPLACE SURGERY  
EXHAUST SYSTEM, BLDG 1, 3RD FLR

Location  
FRESNO, CA

Date  
3-05-15

Checked  
YVZ

Drawn  
LC

Project Number  
570-19-211

Building Number  
1

Drawing Number  
E200

Dwg. of -

Office of  
Construction  
and Facilities  
Management

