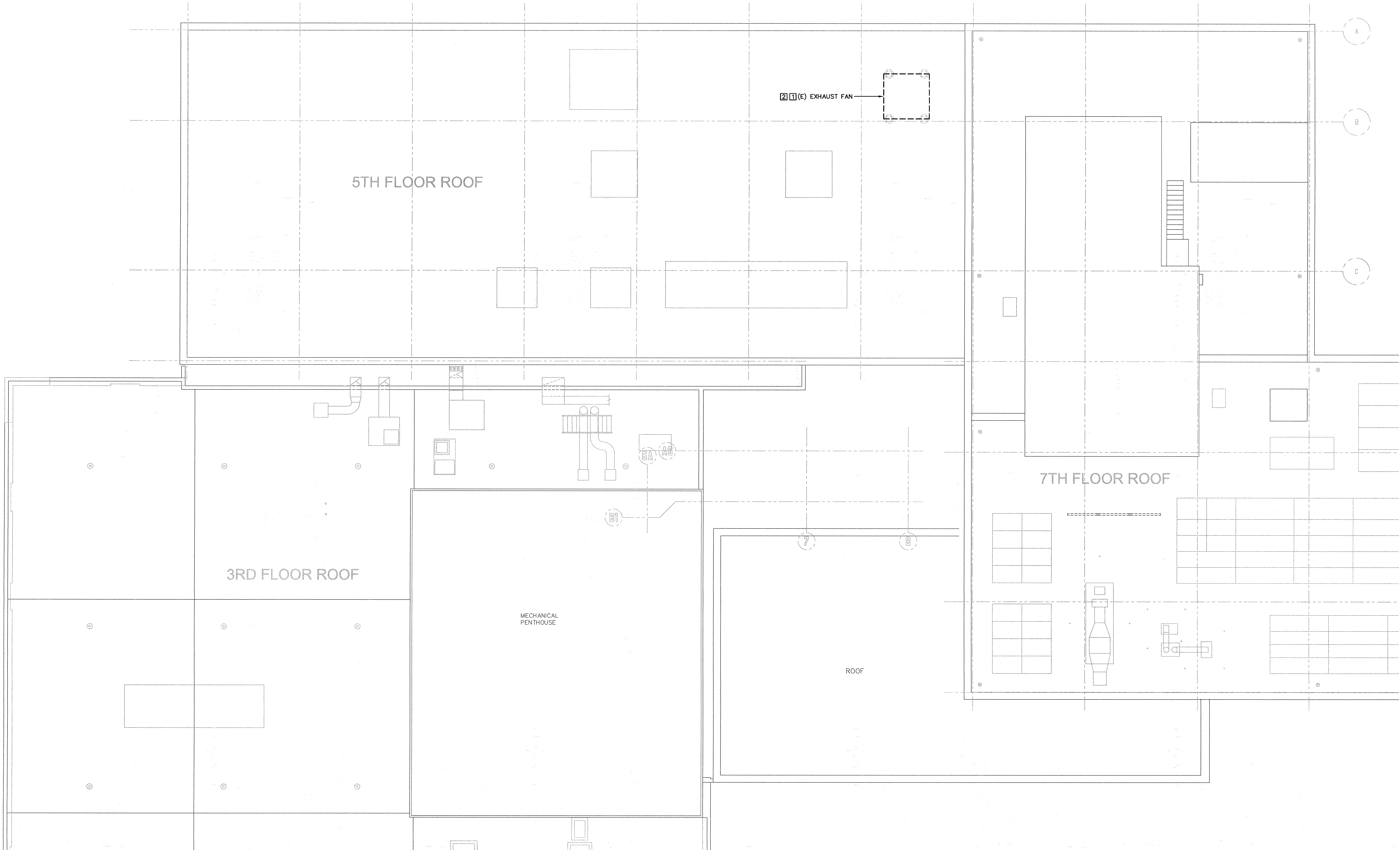


three inches = one foot  
one and one half inches = one foot  
one inch = one foot  
three quarters inch = one foot  
one half inch = one foot  
three eighths inch = one foot  
one quarter inch = one foot  
one eighth inch = one foot  
win8serv\share\JOBS\4592\4592E300.dwg 3-05-15 12:18:50 PM pc7

- DEMOLITION NOTES:**
- 1 DISCONNECT (E) EXHAUST FAN AND REMOVE ALL ASSOCIATED ELECTRICAL WORK.
  - 2 REMOVE EXPOSED CONDUIT, SUPPORTS AND RELATED HARDWARE NOT ASSOCIATED WITH OTHER EQUIPMENT. MAKE WATERTIGHT ANY CONDUIT NOT POSSIBLE TO REMOVE. REMOVE EXPOSED CONDUIT INTO THE BUILDING AND PATCH HOLES. LOCATE POWER SOURCE AND CHANGE BREAKER, SWITCH OR MOTOR STARTER IDENTIFICATION TO READ "SPARE."



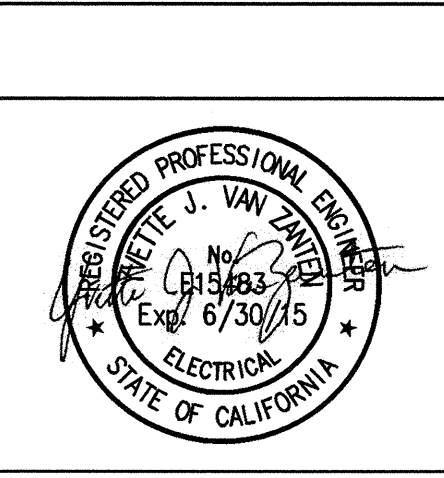
**ROOF PLAN - ELECTRICAL DEMOLITION**  
SCALE: 1/8" = 1'-0"



|                                     |          |
|-------------------------------------|----------|
| 100% CONSTRUCTION DOCUMENTS         | 3-5-15   |
| 100% NOT FOR CONSTRUCTION SUBMITTAL | 1-26-15  |
| CONSTRUCTION DOCUMENTS (100%)       | 10-27-14 |
| Revisions:                          | Date     |

**CONSULTANTS:**

**CHARLES A. MARTIN AND ASSOCIATES**  
CONSULTING ELECTRICAL ENGINEERS  
2730 C Street, Sacramento, CA 95816-3215, tel: 916-442-0416  
CAMA JOB #: 4592



**ARCHITECT/ENGINEERS:** Project No. 13-9111.00

**TETER, LLP**  
7535 N. PALM AVE. 201 | FRESNO, CA 93711 | 559.437.0887  
125 S. BRIDGE ST. 150 | VISALIA, CA 93291 | 559.425.5244  
1200 DISCOVERY DR. 160 | BAKERSFIELD, CA 93309 | 441.863.8600  
1130 K STREET 225 | SACRAMENTO, CA 95814 | 916.538.4242  
**ARCHITECTS ENGINEERS CONNECTED**

Drawing Title  
**ROOF PLAN - ELECTRICAL DEMOLITION**

Approved: Project Director

Project Title  
**VA REPLACE SURGERY EXHAUST SYSTEM, BLDG 1, 3RD FLR**

Location  
FRESNO, CA

Date  
3-05-15

Checked  
YVZ

Drawn  
LC

Project Number  
510-15-211

Building Number  
1

Drawing Number  
**E300**

Dwg. of -

**Office of Construction and Facilities Management**

Department of Veterans Affairs