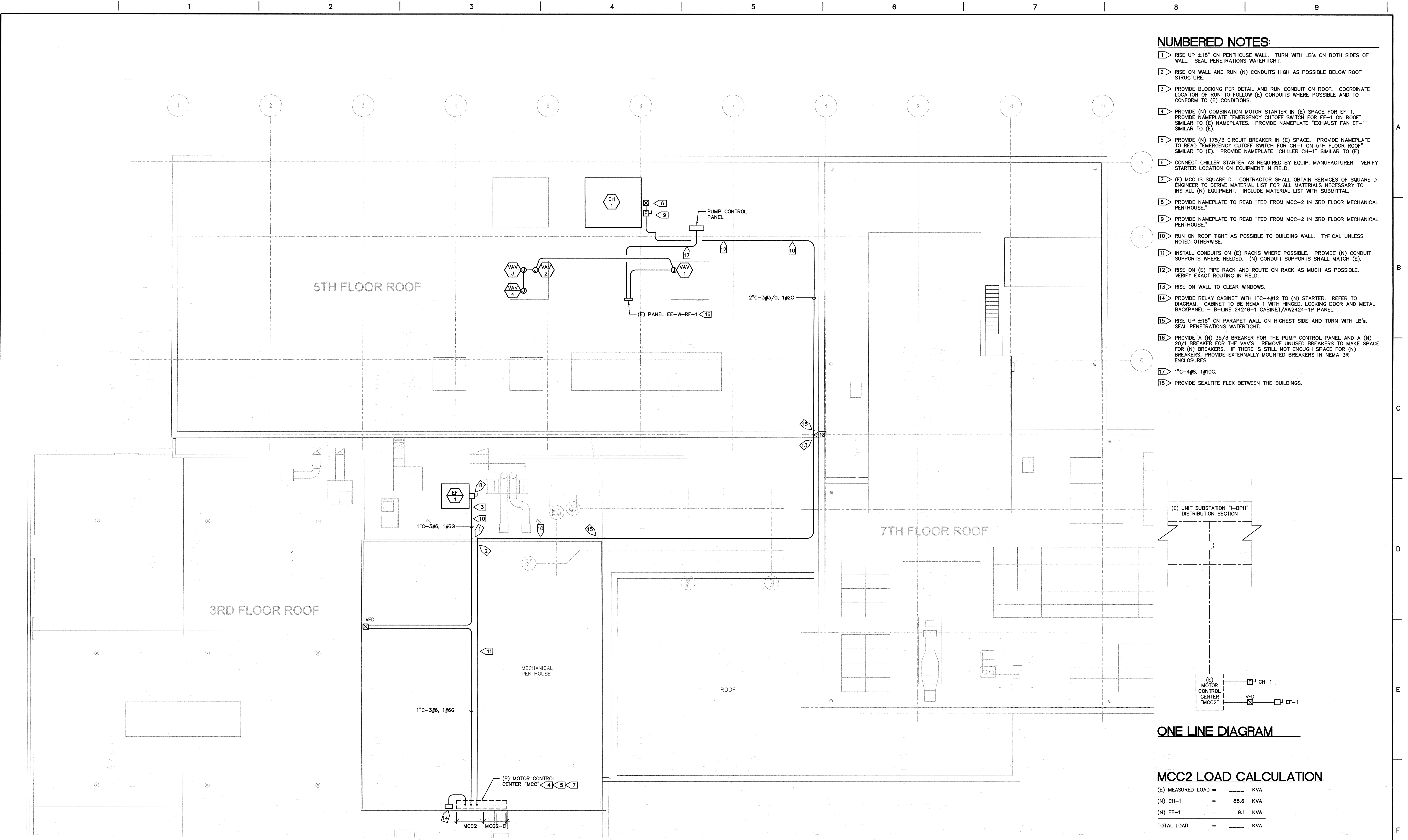


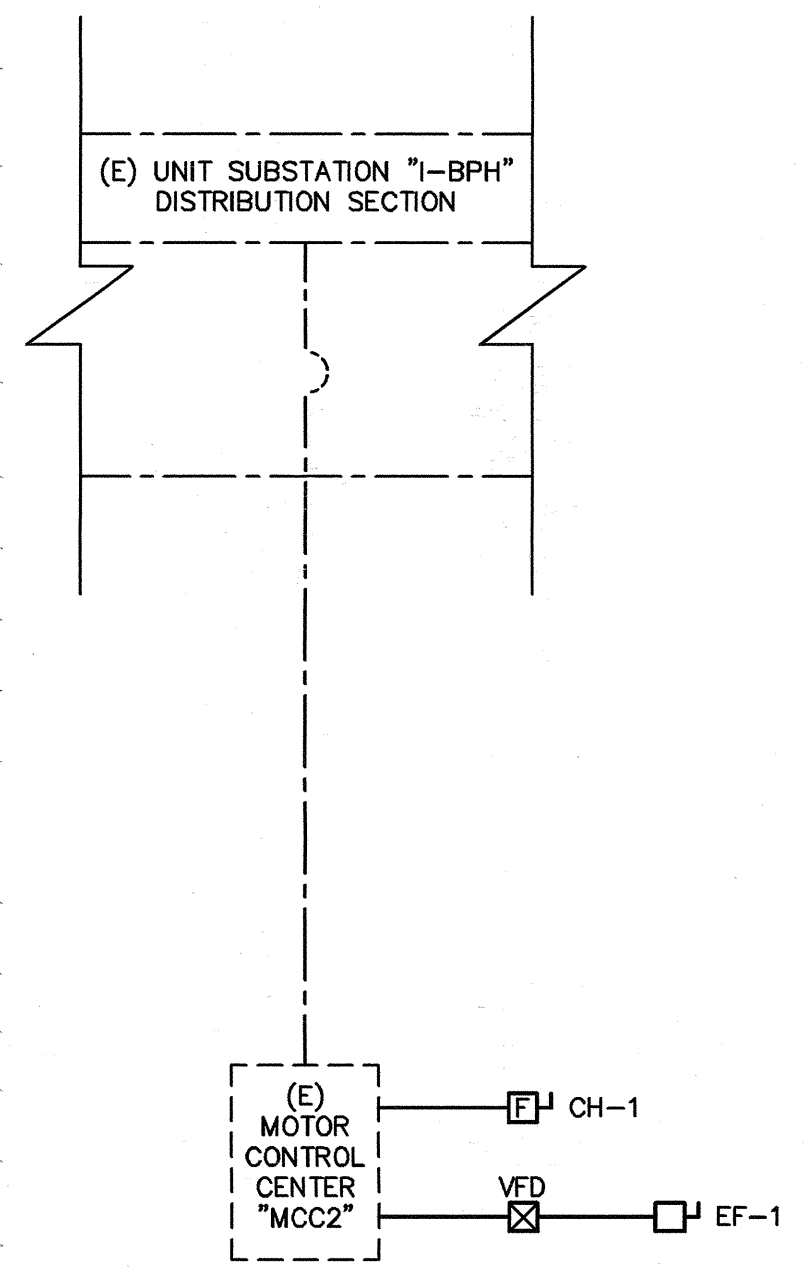
three inches = one foot  
one and one half inches = one foot  
one inch = one foot  
three quarters inch = one foot  
one half inch = one foot  
three eighths inch = one foot  
one quarter inch = one foot  
one eighth inch = one foot  
one sixteenth inch = one foot

pc7

VA FORM 08-6231



- NUMBERED NOTES:**
- 1 RISE UP ±18" ON PENTHOUSE WALL. TURN WITH LB'S ON BOTH SIDES OF WALL. SEAL PENETRATIONS WATERTIGHT.
  - 2 RISE ON WALL AND RUN (N) CONDUITS HIGH AS POSSIBLE BELOW ROOF STRUCTURE.
  - 3 PROVIDE BLOCKING PER DETAIL AND RUN CONDUIT ON ROOF. COORDINATE LOCATION OF RUN TO FOLLOW (E) CONDUITS WHERE POSSIBLE AND TO CONFORM TO (E) CONDITIONS.
  - 4 PROVIDE (N) COMBINATION MOTOR STARTER IN (E) SPACE FOR EF-1. PROVIDE NAMEPLATE "EMERGENCY CUTOFF SWITCH FOR EF-1 ON ROOF" SIMILAR TO (E) NAMEPLATES. PROVIDE NAMEPLATE "EXHAUST FAN EF-1" SIMILAR TO (E).
  - 5 PROVIDE (N) 175/3 CIRCUIT BREAKER IN (E) SPACE. PROVIDE NAMEPLATE TO READ "EMERGENCY CUTOFF SWITCH FOR CH-1 ON 5TH FLOOR ROOF" SIMILAR TO (E). PROVIDE NAMEPLATE "CHILLER CH-1" SIMILAR TO (E).
  - 6 CONNECT CHILLER STARTER AS REQUIRED BY EQUIP. MANUFACTURER. VERIFY STARTER LOCATION ON EQUIPMENT IN FIELD.
  - 7 (E) MCC IS SQUARE D. CONTRACTOR SHALL OBTAIN SERVICES OF SQUARE D ENGINEER TO DERIVE MATERIAL LIST FOR ALL MATERIALS NECESSARY TO INSTALL (N) EQUIPMENT. INCLUDE MATERIAL LIST WITH SUBMITTAL.
  - 8 PROVIDE NAMEPLATE TO READ "FED FROM MCC-2 IN 3RD FLOOR MECHANICAL PENTHOUSE."
  - 9 PROVIDE NAMEPLATE TO READ "FED FROM MCC-2 IN 3RD FLOOR MECHANICAL PENTHOUSE."
  - 10 RUN ON ROOF TIGHT AS POSSIBLE TO BUILDING WALL. TYPICAL UNLESS NOTED OTHERWISE.
  - 11 INSTALL CONDUITS ON (E) RACKS WHERE POSSIBLE. PROVIDE (N) CONDUIT SUPPORTS WHERE NEEDED. (N) CONDUIT SUPPORTS SHALL MATCH (E).
  - 12 RISE ON (E) PIPE RACK AND ROUTE ON RACK AS MUCH AS POSSIBLE. VERIFY EXACT ROUTING IN FIELD.
  - 13 RISE ON WALL TO CLEAR WINDOWS.
  - 14 PROVIDE RELAY CABINET WITH 1"C-4#12 TO (N) STARTER. REFER TO DIAGRAM. CABINET TO BE NEMA 1 WITH HINGED, LOCKING DOOR AND METAL BACKPANEL - B-LINE 24246-1 CABINET/AW2424-1P PANEL.
  - 15 RISE UP ±18" ON PARAPET WALL ON HIGHEST SIDE AND TURN WITH LB'S. SEAL PENETRATIONS WATERTIGHT.
  - 16 PROVIDE A (N) 35/3 BREAKER FOR THE PUMP CONTROL PANEL AND A (N) 20/1 BREAKER FOR THE VAV'S. REMOVE UNUSED BREAKERS TO MAKE SPACE FOR (N) BREAKERS. IF THERE IS STILL NOT ENOUGH SPACE FOR (N) BREAKERS, PROVIDE EXTERNALLY MOUNTED BREAKERS IN NEMA 3R ENCLOSURES.
  - 17 1"C-4#8, 1#10G.
  - 18 PROVIDE SEALTITE FLEX BETWEEN THE BUILDINGS.



**ONE LINE DIAGRAM**

**MCC2 LOAD CALCULATION**

(E) MEASURED LOAD	=	_____	KVA
(N) CH-1	=	88.6	KVA
(N) EF-1	=	9.1	KVA
TOTAL LOAD	=	_____	KVA

**ROOF PLAN - ELECTRICAL**  
SCALE: 1/8" = 1'-0"



<b>CONSULTANTS:</b>  <b>CHARLES A. MARTIN AND ASSOCIATES</b> CONSULTING ELECTRICAL ENGINEERS 2730 C Street, Sacramento, CA 95816-3215, tel: 916-442-0416 CAMA JOB #: 4592				<b>ARCHITECT/ENGINEERS:</b> Project No. 13-9111.00  <b>TETER, LLP</b> 7535 N. PALM AVE. 201   FRESNO, CA 93711   559.437.0887 125 S. BRIDGE ST. 150   VISALIA, CA 93291   559.425.5244 1200 DISCOVERY DR. 101   BAKERSFIELD, CA 93309   441.963.8600 1130 K STREET 225   SACRAMENTO, CA 95814   916.538.4242 <b>ARCHITECTS ENGINEERS CONNECTED</b>		<b>Project Title</b> ROOF PLAN - ELECTRICAL  <b>Approved: Project Director</b>		<b>Project Title</b> VA REPLACE SURGERY EXHAUST SYSTEM, BLDG 1, 3RD FLR  <b>Location</b> FRESNO, CA  <b>Date</b> 3-05-15 <b>Checked</b> YVZ <b>Drawn</b> LC		<b>Project Number</b> 570-19-211 <b>Building Number</b> 1 <b>Drawing Number</b> <b>E301</b> Dwg. of -		<b>Office of Construction and Facilities Management</b>  Department of Veterans Affairs	
--	--	--	--	--	--	---	--	--	--	---	--	---	--