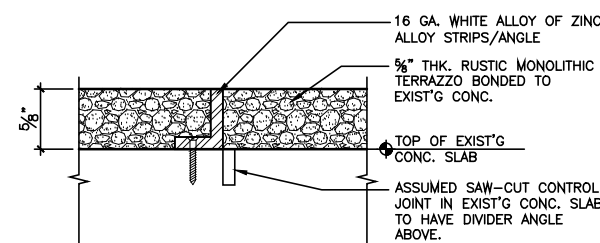
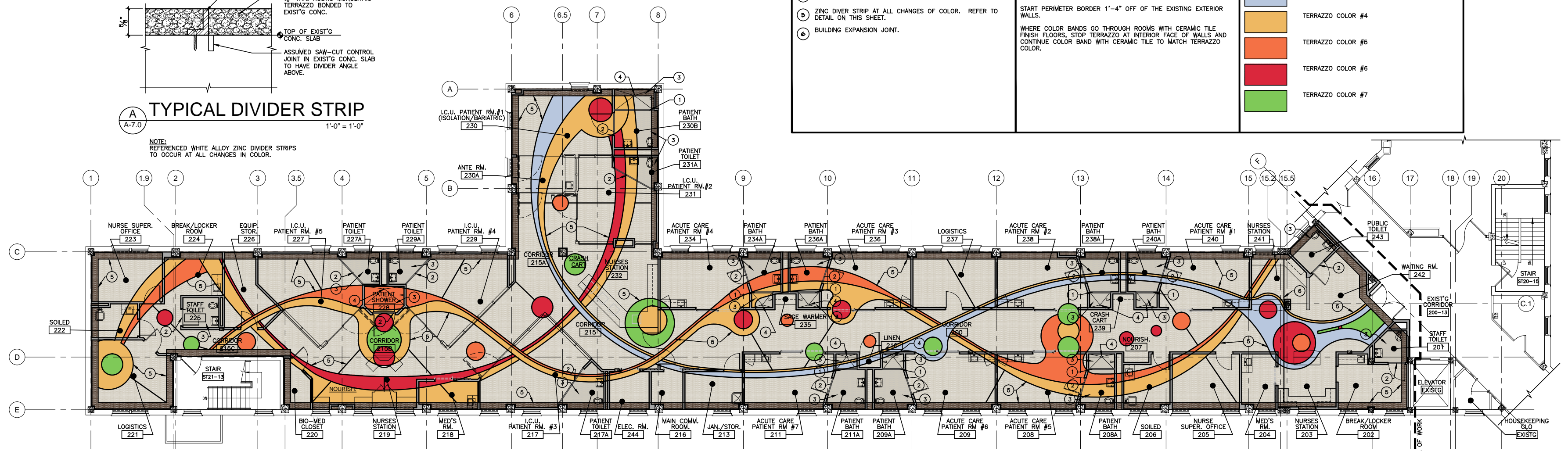


**ALTERNATE BID
SECOND FLOOR PLAN - FLOORING LAYOUT**
1/8" = 1'-0"










TYPICAL DIVIDER STRIP
1'-0" = 1'-0"

NOTE:
REFERENCED WHITE ALLOY ZINC DIVIDER STRIPS
TO OCCUR AT ALL CHANGES IN COLOR.



**BASE BID
SECOND FLOOR PLAN - FLOORING LAYOUT**
1/8" = 1'-0"

KEYED NOTES		GENERAL PLAN NOTES		LEGEND	
1	MARBLE THRESHOLD AT SHOWERS. REFER TO DETAIL 1/A-2.2	REFER TO SPECIFICATIONS FOR TERRAZZO THICKNESS AND OTHER INFORMATION. COLORS SHOWN ON DRAWING ARE FOR REFERENCE ONLY AND DO NOT REPRESENT ACTUAL TERRAZZO COLORS. ARCHITECT TO COORDINATE FINAL COLOR SELECTIONS WITH OWNER AND THE TERRAZZO SUB CONTRACTOR. THE PATTERN SHOWN AND THE NUMBER OF COLORS SHOWN ARE FOR THE SUB CONTRACTOR TO BE AWARE THAT THE COST FOR THIS PATTERN WILL BE ASSUMED TO BE IN HIS SUB CONTRACT PRICE. START PERIMETER BORDER 1'-4" OFF OF THE EXISTING EXTERIOR WALLS. WHERE COLOR BANDS GO THROUGH ROOMS WITH CERAMIC TILE FINISH FLOORS, STOP TERRAZZO AT INTERIOR FACE OF WALLS AND CONTINUE COLOR BAND WITH CERAMIC TILE TO MATCH TERRAZZO COLOR.			TERRAZZO COLOR #1 - PRIMARY
2	MARBLE THRESHOLD AT DOORS. REFER TO DETAIL 1/A-6.0				TERRAZZO COLOR #2 - BORDER
3	1x1 C.T. FLOOR @ ALL SHOWERS.				TERRAZZO COLOR #3
4	FLOOR DRAIN. REFER TO PLUMBING DRAWINGS.				TERRAZZO COLOR #4
5	ZINC DYER STRIP AT ALL CHANGES OF COLOR. REFER TO DETAIL ON THIS SHEET.				TERRAZZO COLOR #5
6	BUILDING EXPANSION JOINT.				TERRAZZO COLOR #6
					TERRAZZO COLOR #7

CONSTRUCTION DOCUMENTS - 100% SUBMISSION

REVIEW REVISIONS	10/25/15	ARCHITECT AND CONSULTANTS: DEANE + STROLLO, LLC 718 Virginia Drive Orlando, FL 32803 T: (407) 423-5355 F: (407) 422-5994	MOSES & ASSOCIATES 2209 NW 40th Ter. Ste. A Gainesville, FL 32605 T: (352) 372-1911 F: (352) 372-0186	DEPARTMENT OF VETERAN AFFAIRS ENGINEERING SERVICE ENGINEERING PLANNING AND ANALYSIS	Approved: Engineering Asst. Chief Engineering Maint. And Oper. Engineering Equipment Manager Engineering Health & Safety Engineering Planning & Analysis C.O.R.	Second Title SECOND FLOOR PLAN - FLOORING LAYOUT	Project Title RENOVATE 13B FOR ACUTE CARE AND INTENSIVE CARE UNIT	Date JANUARY 30, 2015	
						Approved Chief, Engineering Service -	Building Number 13B	Checked JS,KS	Drawn GC
						Approved Service Director -	Location 1826 VETERANS BLVD. - DUBLIN, GA 31021	Drawing NO. A-7.0R	Dwg. 20 of 60

