

Filename: N:\13214\VA Dublin Building 13B\Construction\PLUMB\13214-PLUMB\FIRE - Plot Date: 2 March 2015 - Plotted By: George Lebo

A

three inches = one foot

B

one and one-half inches = one foot

C

one inch = one foot

D

three-quarters inch = one foot

E

one-half inch = one foot

F

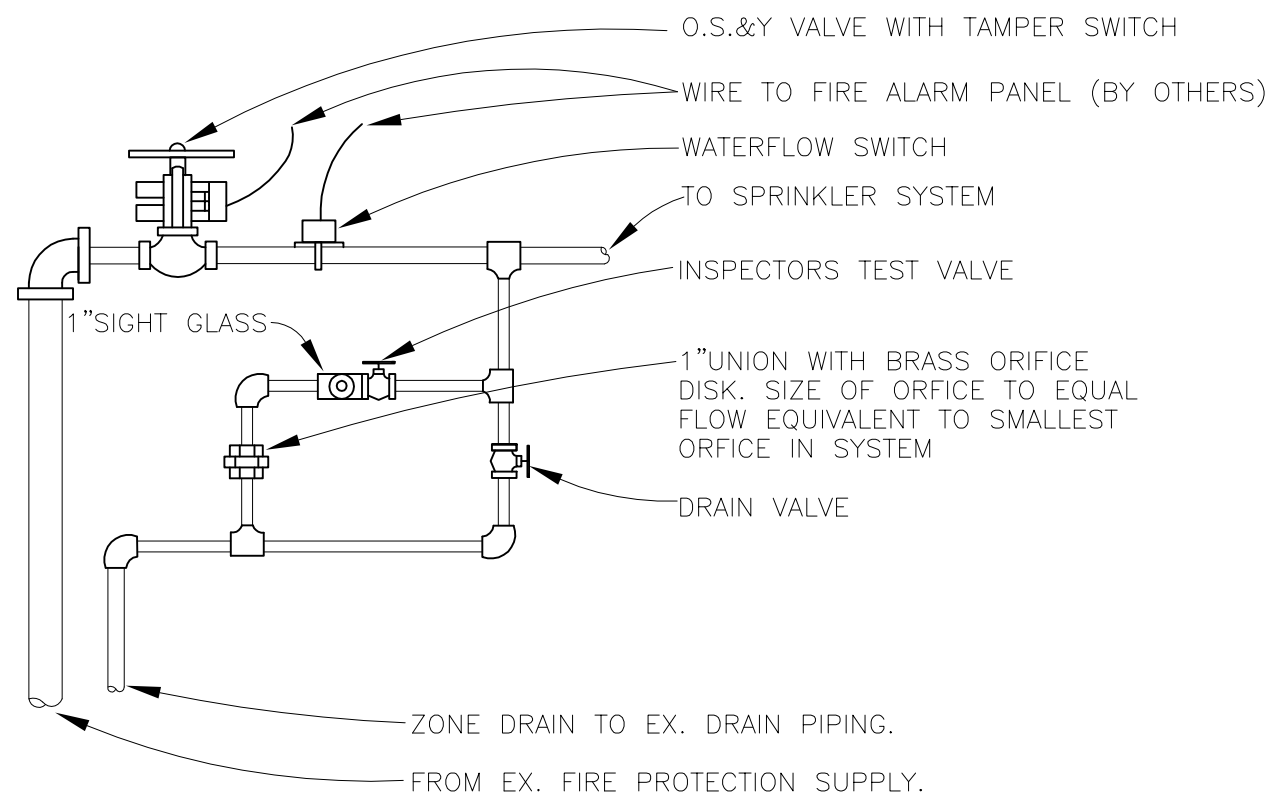
one-quarter inch = one foot

G

one-eighth inch = one foot

CONSTRUCTION DOCUMENTS - 100% SUBMISSION

<div>Revisions</div> <div>Date</div>	ARCHITECT AND CONSULTANTS:		<div>DEPARTMENT OF VETERAN AFFAIRS</div> <div>ENGINEERING SERVICE</div> <div>ENGINEERING PLANNING AND ANALYSIS</div>	<div>Approved:</div> <div>Engineering Asst. Chief</div> <div>Engineering Maint. And Oper.</div> <div>Engineering Equipment Manager</div> <div>Engineering Health &amp; Safety</div> <div>Engineering Planning &amp; Analysis</div> <div>C.O.R.</div>	<div>Drawing Title</div> <div>FIRE PROTECTION - LEGEND</div> <div>NOTES AND DETAILS</div> <div>Approved: Chief, Engineering Service</div> <div>Approved: Service Director</div>	<div>Project Title</div> <div>RENOVATE 13B</div> <div>FOR ACUTE CARE AND</div> <div>INTENSIVE CARE UNIT</div> <div>Building Number</div> <div>13B</div> <div>Location</div> <div>1826 VETERANS BLVD. - DUBLIN, GA 31021</div>	<div>Date</div> <div>JANUARY 30, 2015</div>	<div>Engineering Service</div> <div>Department of Veterans Affairs</div>
	<div>DEANE + STROLLO, LLC</div> <div>718 Virginia Drive</div> <div>Orlando, FL 32803</div> <div>T: (407) 423-6305 F: (407) 422-6994</div>						<div>MOSES &amp; ASSOCIATES</div> <div>2209 NW 40th Ter, Ste. A</div> <div>Gainesville, FL 32605</div> <div>T: (352) 372-1911 F: (352) 372-0186</div>	



SPRINKLER CONNECTION DETAIL  
NOT TO SCALE

FIRE PROTECTION LEGEND

	FDC	FIRE DEPARTMENT CONNECTION
	ASR	AUTOMATIC SPRINKLER RISER
	FS	FLOW SWITCH
	GV	GATE VALVE
	CV	CHECK VALVE
		CAPPED PIPE
		UNION
	TS	TAMPER SWITCH
		HYDRAULIC CALCULATION NODE
		FIRE HYDRANT
	FHC	FIRE HOSE CABINET

CODES & STANDARDS

- 1 GENERAL
- 1.1 THE WORK COVERED BY THIS DIVISION CONSISTS OF PROVIDING ALL LABOR, EQUIPMENT AND MATERIALS AND PERFORMING ALL OPERATIONS NECESSARY FOR THE INSTALLATION OF THE MECHANICAL WORK AS HEREIN CALLED FOR AND SHOWN ON THE DRAWINGS.
- 2 CODES
- 2.1 2.6.10 INSTALLATION OF SPRINKLER SYSTEMS (NFPA 13) - 2013

FIRE PROTECTION GENERAL NOTES

- THE CONTRACTOR SHALL BE THE ENGINEER OF RECORD FOR THE FIRE PROTECTION SYSTEM. PROVIDE A COMPLETE DESIGN FOR THE BUILDING SPRINKLER SYSTEM THAT COMPLIES WITH ALL REQUIREMENTS OF THE INTERNATIONAL BUILDING CODE, NFPA 13 AND THE PROJECT SPECIFICATIONS. THE CONTRACT DOCUMENTS ARE MEANT TO ASSIST IN BIDDING ONLY.
- CONTRACTOR SHALL COORDINATE ANY MOVEMENT OF SPRINKLER MAIN PIPING AND LOCATION OF SPRINKLER HEADS WITH ARCHITECT AND ENGINEER.
- CONTRACTOR SHALL OBTAIN A CURRENT FLOW TEST AND PROVIDE HYDRAULIC CALCULATIONS FOR THE DESIGNED SPRINKLER SYSTEM.
- FIRE PROTECTION CONTRACTOR SHALL VISIT BUILDING TO ACQUANT HIMSELF WITH ANY CONDITIONS WHICH MAY AFFECT THE EXECUTION AND INSTALLATION OF ALL ITEMS OF NEW WORK AND VERIFY ALL EXISTING SIZES AND LOCATIONS PRIOR TO START OF ANY WORK. ANY DISCREPANCIES AT THIS TIME SHALL BE COORDINATED WITH THE ARCHITECT.
- THE SPRINKLER SYSTEM SHALL BE INSTALLED IN ACCORDANCE WITH THE 2013 EDITION OF NFPA 13 AND THE SPECIFICATIONS.
- MAINTAIN THE INTEGRITY OF ALL FIRE RATED ASSEMBLIES AND ACOUSTICAL ASSEMBLIES.
- COORDINATE ALL WORK WITH OTHER TRADES TO ALLOW FOR A MINIMUM OF INTERFERENCE.
- PROVIDE 10 DAYS NOTICE BEFORE ALL OPERATIONAL TESTS. PROVIDE 2 DAYS NOTICE BEFORE ALL HYDROSTATIC TESTS. REFER TO SPECIFICATIONS.
- FIRE PROTECTION CONTRACTOR SHALL SEQUENCE ALL WORK TO MAINTAIN ALL EXISTING SYSTEMS IN OPERATION WITH MINIMUM DOWN TIME DURING PERIODS OF FINAL CONNECTION AND CHANGEOVER WITH THE EXISTING SYSTEM.
- FIRE PROTECTION CONTRACTOR SHALL COORDINATE NEW WORK WITH EXISTING CONDITIONS AND WITH OTHER TRADES. ROUTE PIPING AS REQUIRED TO MISS DUCTS.
- ALL PIPING PASSING THROUGH MASONRY WALLS SHALL HAVE A SLEEVE - SEE ARCHITECTURAL DRAWINGS.
- ALL PIPING PASSING THROUGH FIRE-RATED WALLS SHALL HAVE A FIRE-RATED SLEEVE AND CAULKING - SEE ARCHITECTURAL DRAWINGS.
- FIRE PROTECTION CONTRACTOR SHALL OBTAIN CERTIFIED FIRE FLOW TEST FOR USE IN PREPARATION OF SYSTEM HYDRAULIC CALCULATIONS. CONFORM WITH ALL REQUIREMENTS OF NFPA-291.
- FIRE PROTECTION CONTRACTOR SHALL PROVIDE SHOP DRAWINGS INCLUDING COORDINATED REFLECTED CEILING PLAN TO BE APPROVED BY ARCHITECT.
- ALL PIPING SHALL BE COORDINATED WITH OTHER TRADES AND ROUTED AS TIGHT TO STRUCTURE AS POSSIBLE WHILE MAINTAINING ACCESS.

FIRE PROTECTION DESIGN CRITERIA

OWNER:	VETERANS AFFAIRS
NAME OF FACILITY:	VA DUBLIN HOSPITAL
STREET ADDRESS:	1826 VETERANS BLVD
LOCATION:	DUBLIN, GA
TYPE CONSTRUCTION:	TYPE II
OCCUPANCY:	INSTITUTIONAL (I-2)
GENERAL BUILDING HAZARD:	LIGHT
MAXIMUM PROTECTION AREA PER HEAD:	225 SF

HYDRAULIC DESIGN CRITERIA NOTE:

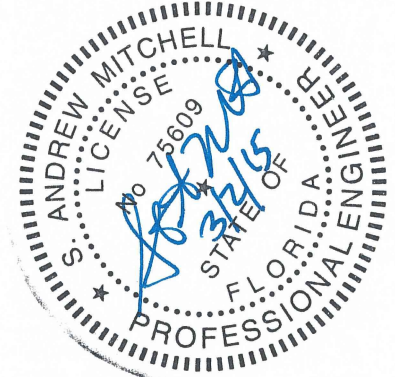
SEE SPECIFICATION SECTION 21 10 00 FOR HYDRAULIC DESIGN CRITERIA.

SEISMIC PERFORMANCE CRITERIA

SEISMIC USE GROUP	SEISMIC DESIGN CATEGORY	OCCUPANCY CATEGORY
III	C	III
IMPORTANCE FACTOR = 1.25		
SEISMIC RESTRAINT IS REQUIRED FOR ELECTRICAL, MECHANICAL, PLUMBING AND FIRE PROTECTION SYSTEM COMPONENTS.		
SYSTEM COMPONENTS SHALL INCLUDE: MEDICAL GAS PIPING, SANITARY PIPING, FIRE PROTECTION PIPING, PLUMBING WATER PIPING, ELECTRICAL CONDUIT, DUCTWORK, MECHANICAL EQUIPMENT AND MECHANICAL PIPING.		

SPRINKLER SCHEDULE

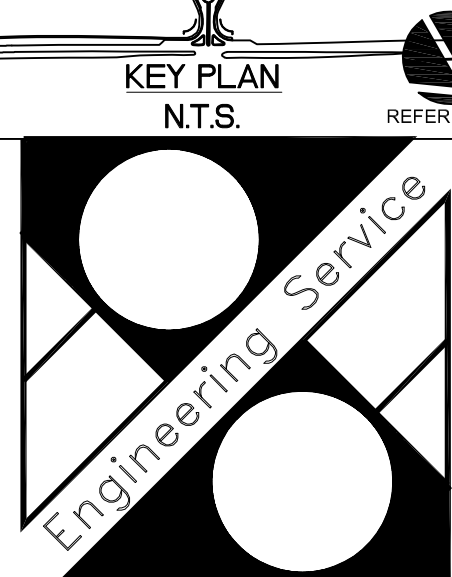
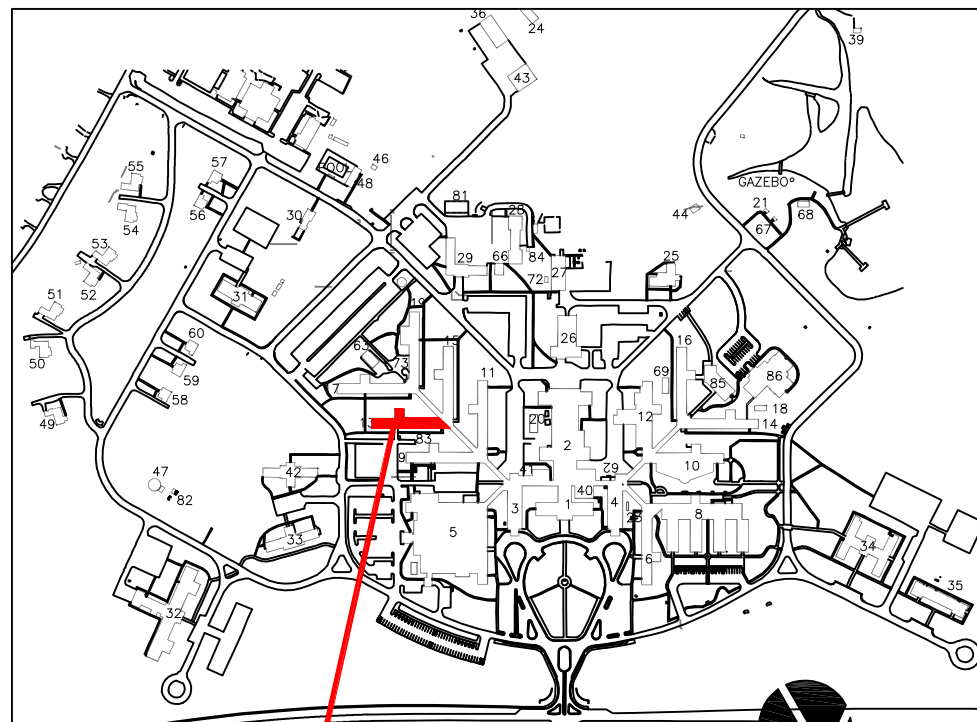
DESCRIPTION	K FACTOR	FINISH	TEMP	SYMBOL	QTY
QUICK RESPONSE, RECESSED PENDENT	5.6	-	135	●	TBD
QUICK RESPONSE, STANDARD UPRIGHT	5.6	-	135	○	TBD
TOTAL					TBD



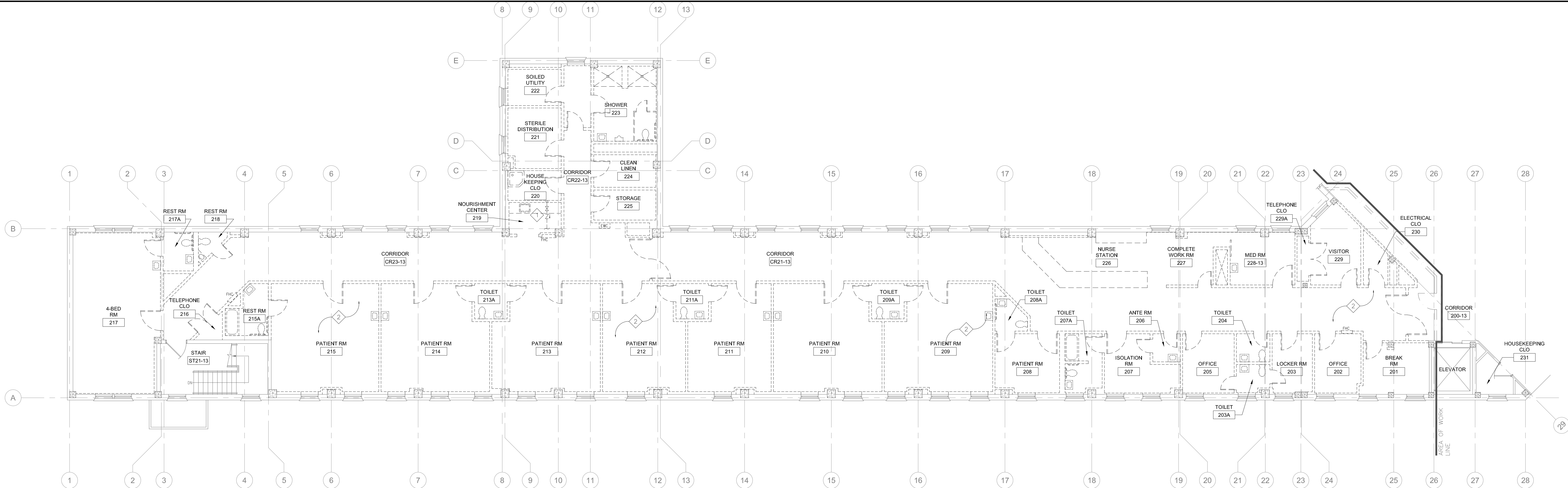
S. Andrew Mitchell  
PE - 0075609



Moses & Associates, Inc.  
2209 NW 40th Terrace, Ste A  
Gainesville, FL 32605  
P 352-372-1911  
F 352-372-0186  
moses-eng.com  
P 352-372-1911  
F 352-372-0186  
moses-eng.com  
FL License EB-0003097 13214



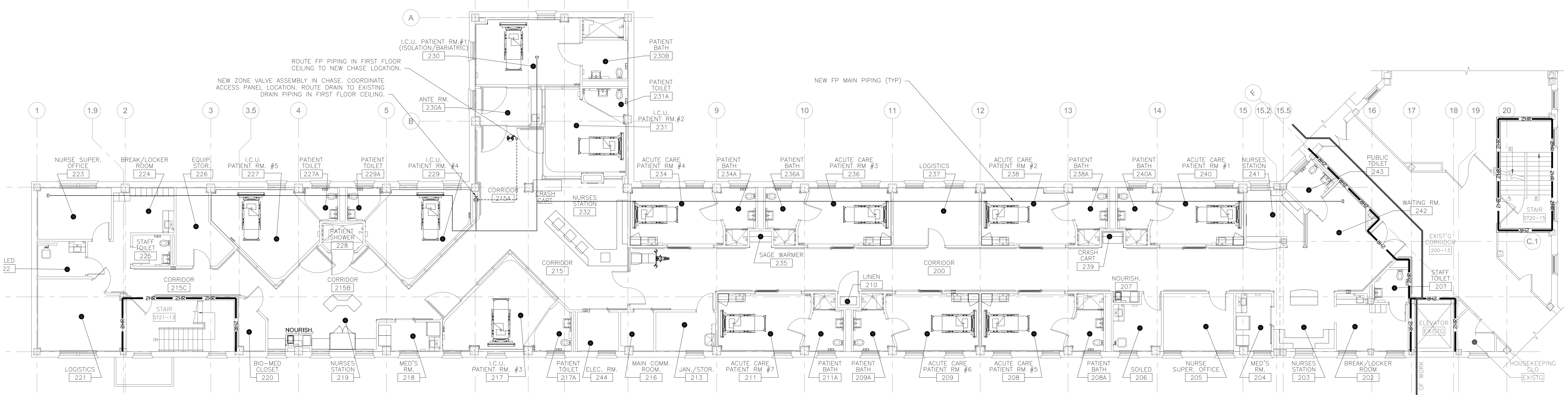




FIRE PROTECTION - SECOND FLOOR PLAN - DEMOLITION  
SCALE: 1/8" = 1'-0"

DEMOLITION NOTES

- 1 DEMOLISH EXISTING ZONE CONTROL VALVE AND RISER DOWN TO FIRST FLOOR CEILING.
- 2 DEMOLISH ALL FIRE PROTECTION PIPING AND SPRINKLERS SERVING SECOND FLOOR.



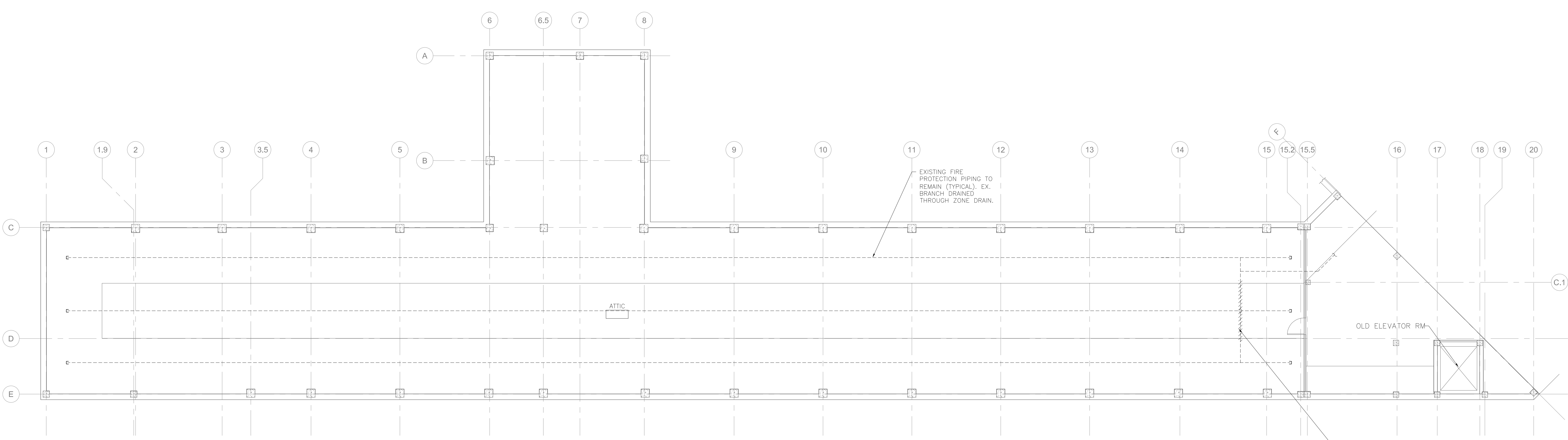
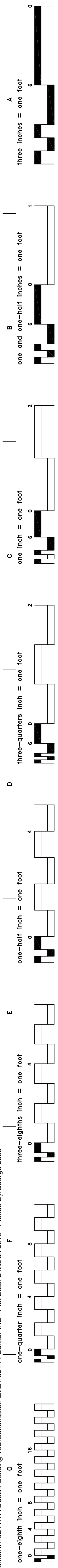
FIRE PROTECTION - SECOND FLOOR PLAN  
SCALE: 1/8" = 1'-0"

CONSTRUCTION DOCUMENTS - 100% SUBMISSION

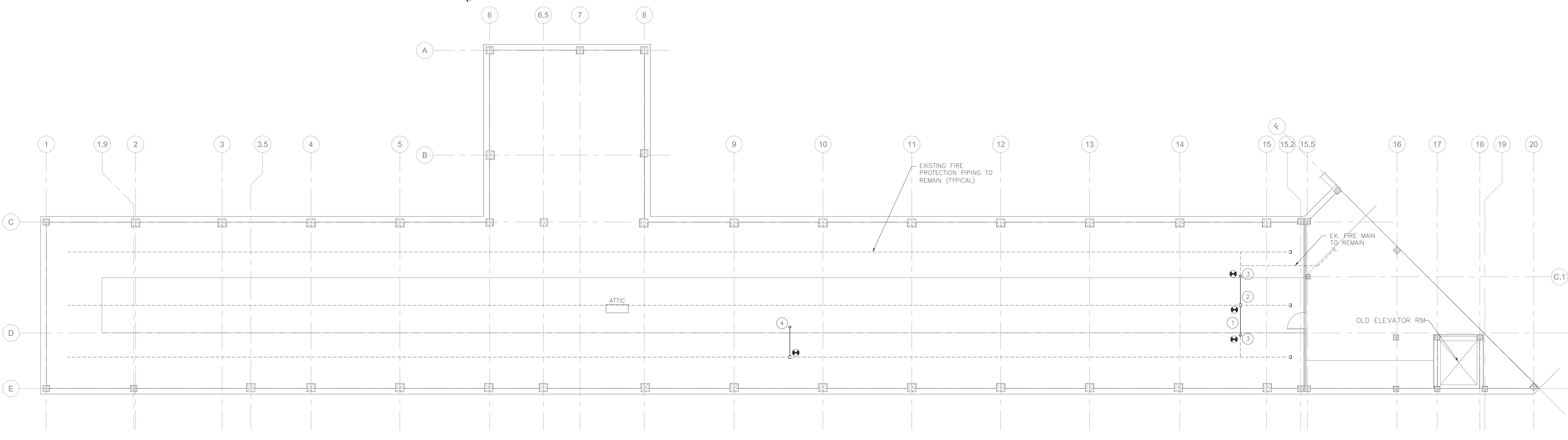
ARCHITECT AND CONSULTANTS: <b>DEANE + STROLLO, LLC</b> 718 Virginia Drive Orlando, FL 32803 T: (407) 423-5355 F: (407) 422-5994		MOSES & ASSOCIATES 2209 NW 40th Ter, Ste. A Gainesville, FL 32605 T: (352) 372-1911 F: (352) 372-0186		DEPARTMENT OF VETERAN AFFAIRS ENGINEERING SERVICE ENGINEERING PLANNING AND ANALYSIS		Approved: Engineering Asst. Chief _____ Engineering Maint. And Oper. _____ Engineering Equipment Manager _____ Engineering Health & Safety _____ Engineering Planning & Analysis _____ C.O.R. _____		Drawing Title <b>SECOND FLOOR PLANS - FIRE PROTECTION</b> Approved: Chief, Engineering Service _____ Approved: Service Director _____		Project Title <b>RENOVATE 13B FOR ACUTE CARE AND INTENSIVE CARE UNIT</b> Building Number <b>13B</b> Checked <b>AM</b> Drawn <b>AM</b> Location <b>1826 VETERANS BLVD. - DUBLIN, GA 31021</b>		Date JANUARY 30, 2015 Project No. 557-14-105 DRAWING NO. <b>F-11</b> Dwg. of 60		KEY PLAN NTS PROJECT LOCATION Engineering Service Department of Veterans Affairs	
---	--	--	--	---	--	---	--	--	--	---	--	---	--	--	--



Filename: N:\13214\VA Dublin Building 13B\Construction\PLUMB\13214-PLUMB-FIRE - Plot Date: 2 March 2015 - Plotted By: George Lebo




 **FIRE PROTECTION - ATTIC PLAN - DEMOLITION**  
SCALE: 1/8" = 1'-0"

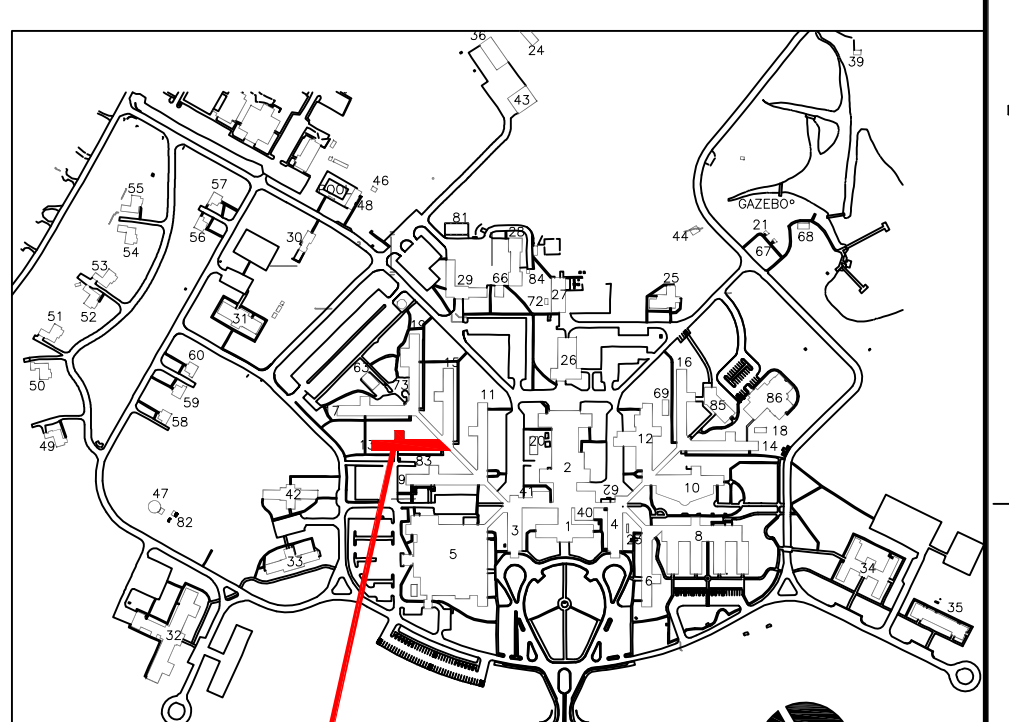


 **FIRE PROTECTION - ATTIC PLAN - DEMOLITION**  
SCALE: 1/8" = 1'-0"

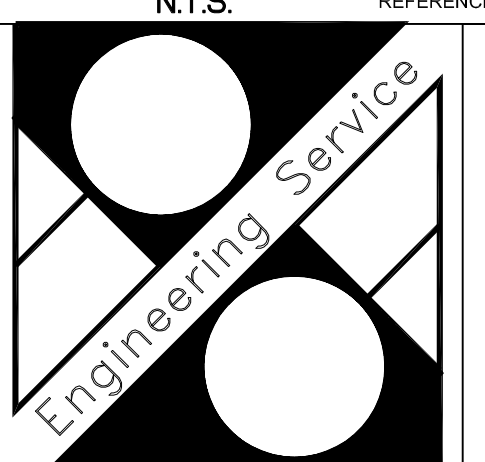
- SHEET NOTES**
- 1 RAISE FIRE PROTECTION MAIN PIPING AS HIGH AS POSSIBLE TO SPAN WALKWAY. ALL NEW PIPING SHALL BE 2-1/2".
  - 2 RECONNECT CENTER BRANCH TO NEW RAISED PIPING. CENTER BRANCH PIPING SHALL NOT BE TRAPPED AFTER NEW CONNECTION.
  - 3 CONNECT NEW PIPING DROP TO EXISTING FIRE PROTECTION PIPING.
  - 4 INSTALL NEW DRAIN PIPE FOR TRAPPED BRANCH PIPING. ROUTE TO NEW HUB DRAIN. DRAIN CONNECTION SHALL BE AT LOWEST POINT OF BRANCH TO ENSURE DRAINAGE OF NORTH AND CENTER BRANCHES.



**MOSES & ASSOCIATES**  
ENGINEERING  
Moses & Associates, Inc. P 352-372-1911  
2209 NW 40th Terrace, Ste A F 352-372-0186  
Gainesville, FL 32605 moose-eng.com  
FL License EB-0003097 13214



**KEY PLAN**  
N.T.S.



Department of Veterans Affairs

CONSTRUCTION DOCUMENTS - 100% SUBMISSION

Revisions	ARCHITECT AND CONSULTANTS:		MOSES & ASSOCIATES 2209 NW 40th Ter, Ste. A Gainesville, FL 32605 T: (352) 372-1911 F: (352) 372-0186	DEPARTMENT OF VETERAN AFFAIRS ENGINEERING SERVICE ENGINEERING PLANNING AND ANALYSIS	Approved: Engineering Asst. Chief _____ Engineering Maint. And Oper. _____ Engineering Equipment Manager _____ Engineering Health & Safety _____ Engineering Planning & Analysis _____ C.O.R. _____	Drawing Title <b>ATTIC PLANS - FIRE PROTECTION</b> Approved: Chief, Engineering Service - Approved: Service Director -	Project Title <b>RENOVATE 13B FOR ACUTE CARE AND INTENSIVE CARE UNIT</b> Building Number <b>13B</b> Checked <b>AM</b> Drawn <b>AM</b> Location <b>1826 VETERANS BLVD. - DUBLIN, GA 31021</b>	Date JANUARY 30, 2015 Project No. 567-14-105 DRAWING NO. <b>F-1.2</b> Dwg. - of 60
	<b>DEANE + STROLLO, LLC</b> 718 Virginia Drive Orlando, FL 32803 T: (407) 423-5355 F: (407) 422-5994							