

1 2 3 4 5 6 7

1

2

3

4

5

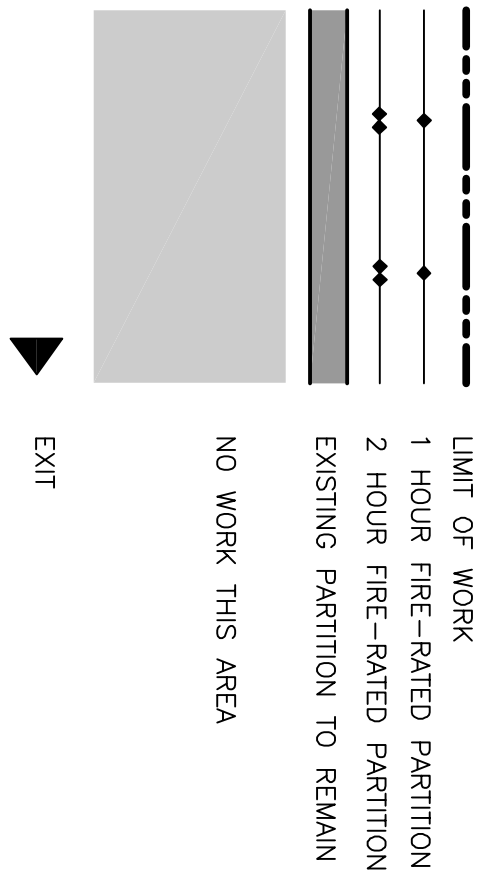
6

7

8

9

SYMBOLS LEGEND



DEDUCT ALTERNATES

- DEDUCT ALTERNATE #1
ALL WORK ASSOCIATED WITH THE RENOVATION AND CONSTRUCTION OF A NEW SUSPENDED CEILING SYSTEM, NEW FLOOR, NEW WALL TILE, RECESSED LED LIGHTING AND FULLY RECESSED SPRINKLER HEADS FOR ELEVATOR LOBBY A-C81, CORRIDOR A-C82 AND CORRIDOR A-C83. WORK WILL ALSO INCLUDE REPLACEMENT OF EXISTING CPVC SPRINKLER PIPING IN CORRIDOR A-C83 ONLY WITH BLACK STEEL (SCHEDULE 40).
- DEDUCT ALTERNATE #2
ALL WORK ASSOCIATED WITH THE RENOVATION AND CONSTRUCTION OF NEW CONFERENCE ROOM (A-B34) AND NEW STERILE/NON STERILE STORAGE (A-B4)
- DEDUCT ALTERNATE #3
ALL WORK ASSOCIATED WITH THE RENOVATION AND CONSTRUCTION OF A NEW SUSPENDED CEILING SYSTEM, NEW WALL TILE, RECESSED LED LIGHTING AND FULLY RECESSED SPRINKLER HEADS FOR CORRIDOR A-C87.. WORK WILL ALSO INCLUDE REPLACEMENT OF EXISTING CPVC SPRINKLER PIPING IN ROOM A-B20 ONLY WITH BLACK STEEL (SCHEDULE 40) AND FULLY RECESSED SPRINKLER HEADS. ALL EXISTING CEILING AND LIGHTING IN ROOM A-B20 TO REMAIN.

TABLE 1: LISTING OF NON-AQW'S POTENTIALLY IMPACTED BY THE WORK

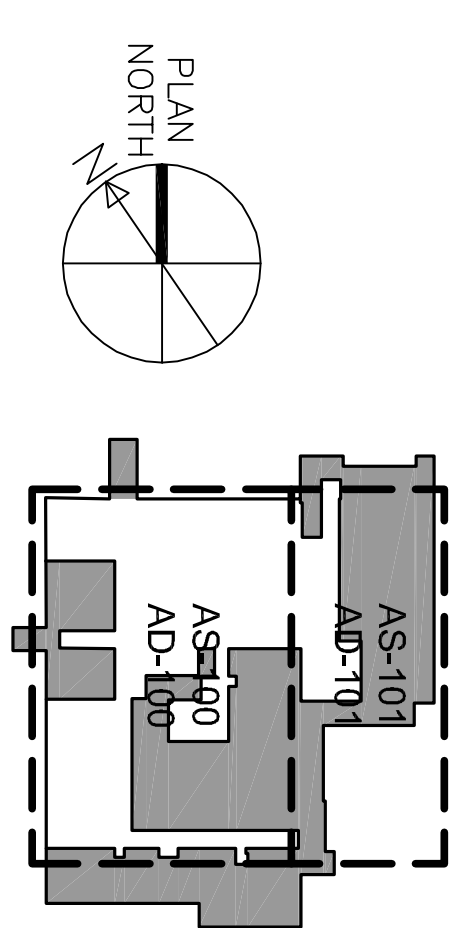
ASBESTOS-CONTAINING MATERIAL	LOCATIONS(S)	QUANTITY	UNIT
12"x12" WHITE & RED FLOOR TILE & ASSOCIATED MASTICS	SEE AREA LIST, BELOW*	11,000	SQUARE FEET
12"x12" BROWN FLOOR TILE & ASSOCIATED MASTICS	A-B3, A-B7, A-B33	4,000	SQUARE FEET
12"x12" BLUE FLOOR TILE & ASSOCIATED MASTICS	A-B27	160	SQUARE FEET

*A-B14, A-B19, A-B2, A-B4, A-B5, A-B6, A-B10, A-B11, A-B11A, A-B14, A-B15, A-B19, A-B19A, A-B19B, A-B21, A-B21A, A-B21B, A-B23, A-B26, A-B30, A-B31, A-B33A, A-C81, A-C82, A-C83, A-C84, A-C85, A-C86, A-C87

TABLE 2: LISTING OF NON-AQW'S POTENTIALLY IMPACTED BY THE WORK

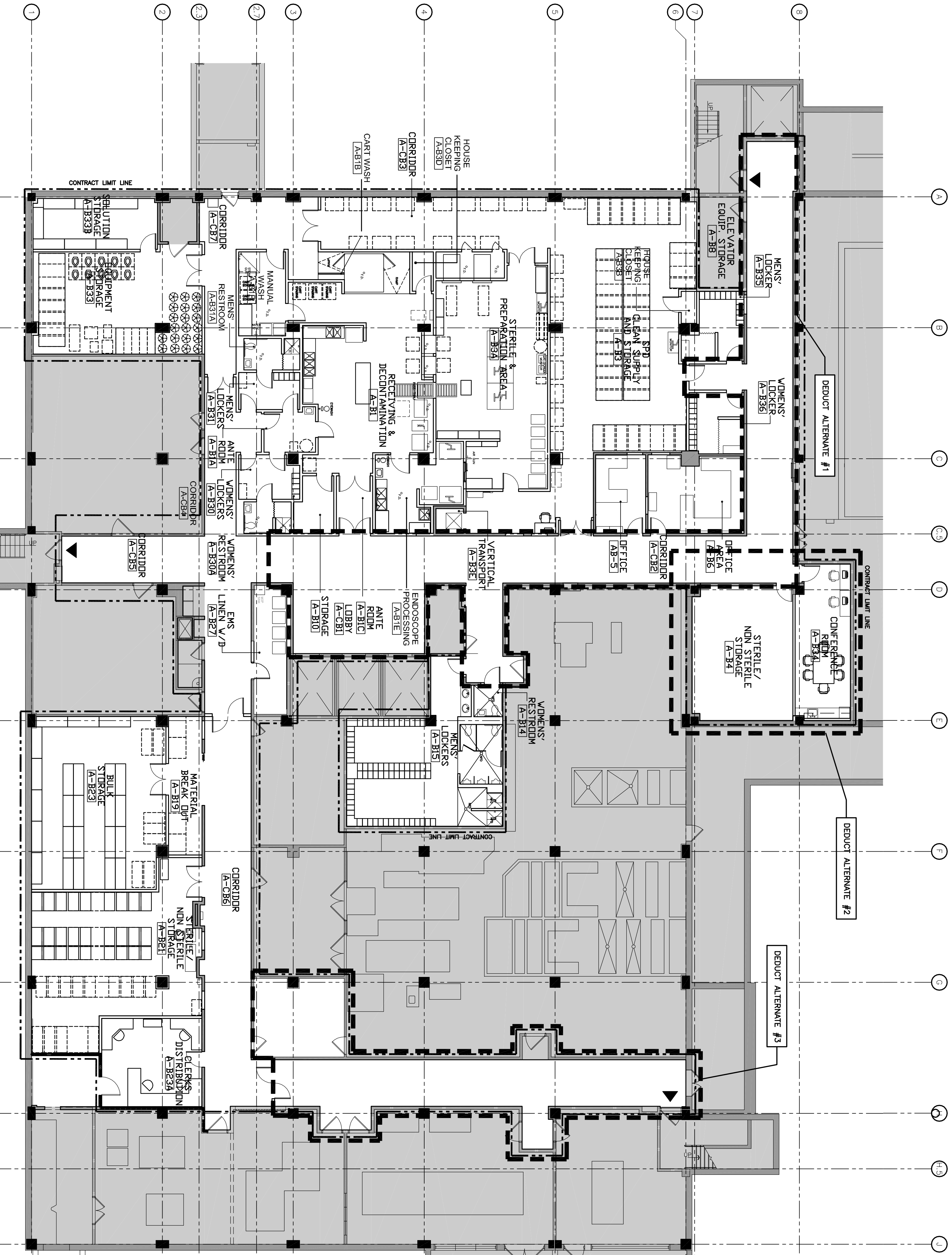
MATERIAL	LOCATIONS(S)
PIPE VALVE INSULATION	ROOM AB-12
TANK INSULATION	ROOM AB-1
FIRE STOP PUTTIES	THROUGHOUT AREA
DUCT SEALANT ON FURNACE DUCT	ROOM AB-3A
COVE BASE MASTIC	THROUGHOUT AREA
SPRAYED-ON FIREPROOFING	THROUGHOUT AREA
FLOOR LEVELING COMPOUND	THROUGHOUT AREA
GYP/SUM BOARD/JOINT COMPOUND	THROUGHOUT AREA

KEYPLAN



1 KEY PLAN

SCALE: N.T.S.



CONSULTANTS:

ARCHITECT/ENGINEERS:



Dewberry-Goodkind, Inc.
280 SUMMER ST.
10TH FLOOR, 02110
BOSTON, MA 02110
PHONE: 617.895.5400
FAX: 617.895.3810

Drawing Title

KEY PLAN

Approved Project Director

Project Title

DEPARTMENT OF VETERANS AFFAIRS
VA BOSTON HEALTHCARE SYSTEM, MA
SPD RENOVATION

Project Number

52934-10-261

Building Number

2

Drawing Number

GI-008

Date

4/6/2011

Checked

DR

Drawn

QC

Dwg

8 of 60

100% BID Final Submission

Office of
Construction
and Facilities
Management

