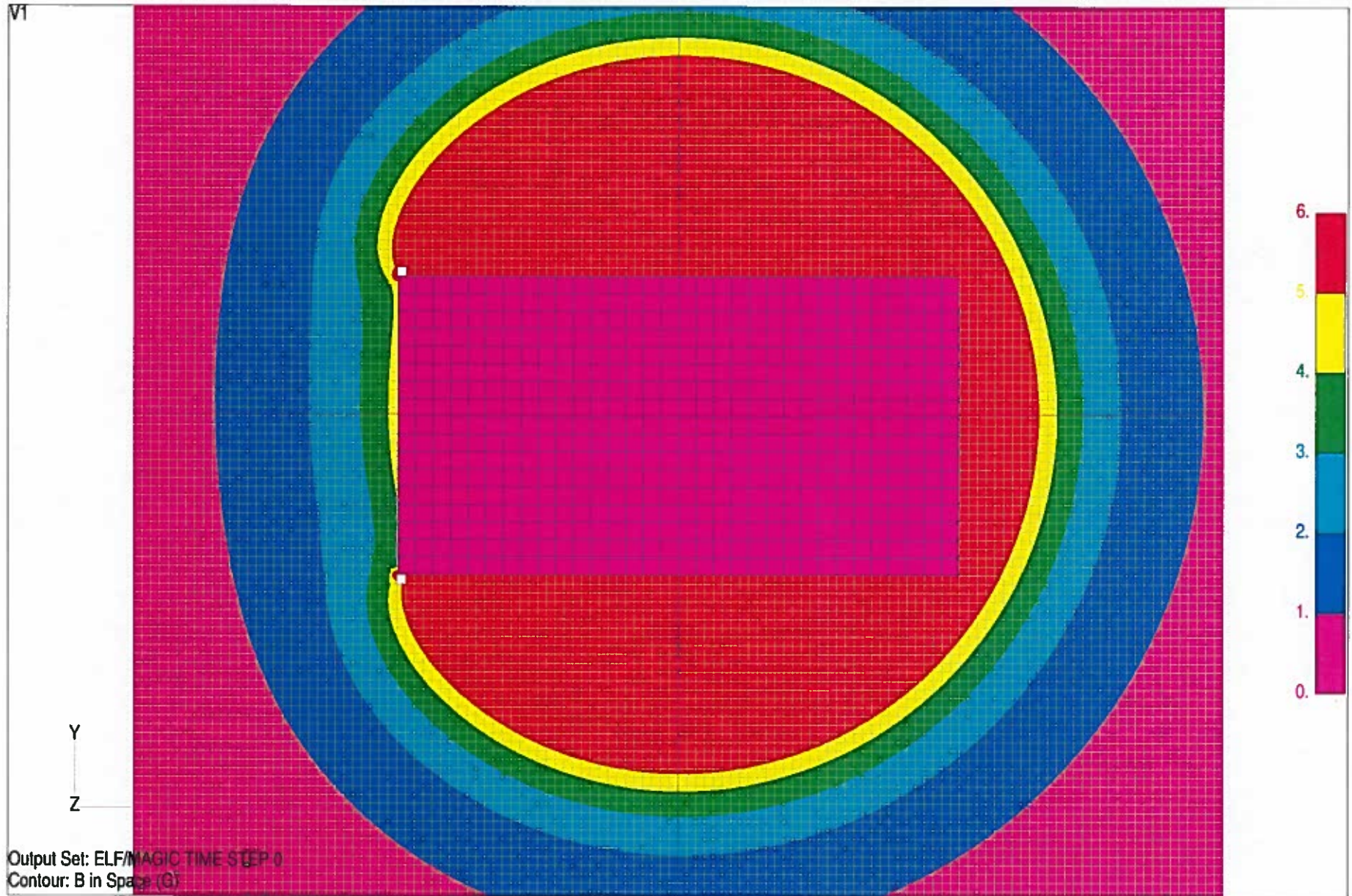


VA MHC, Fayetteville, AR

Top view

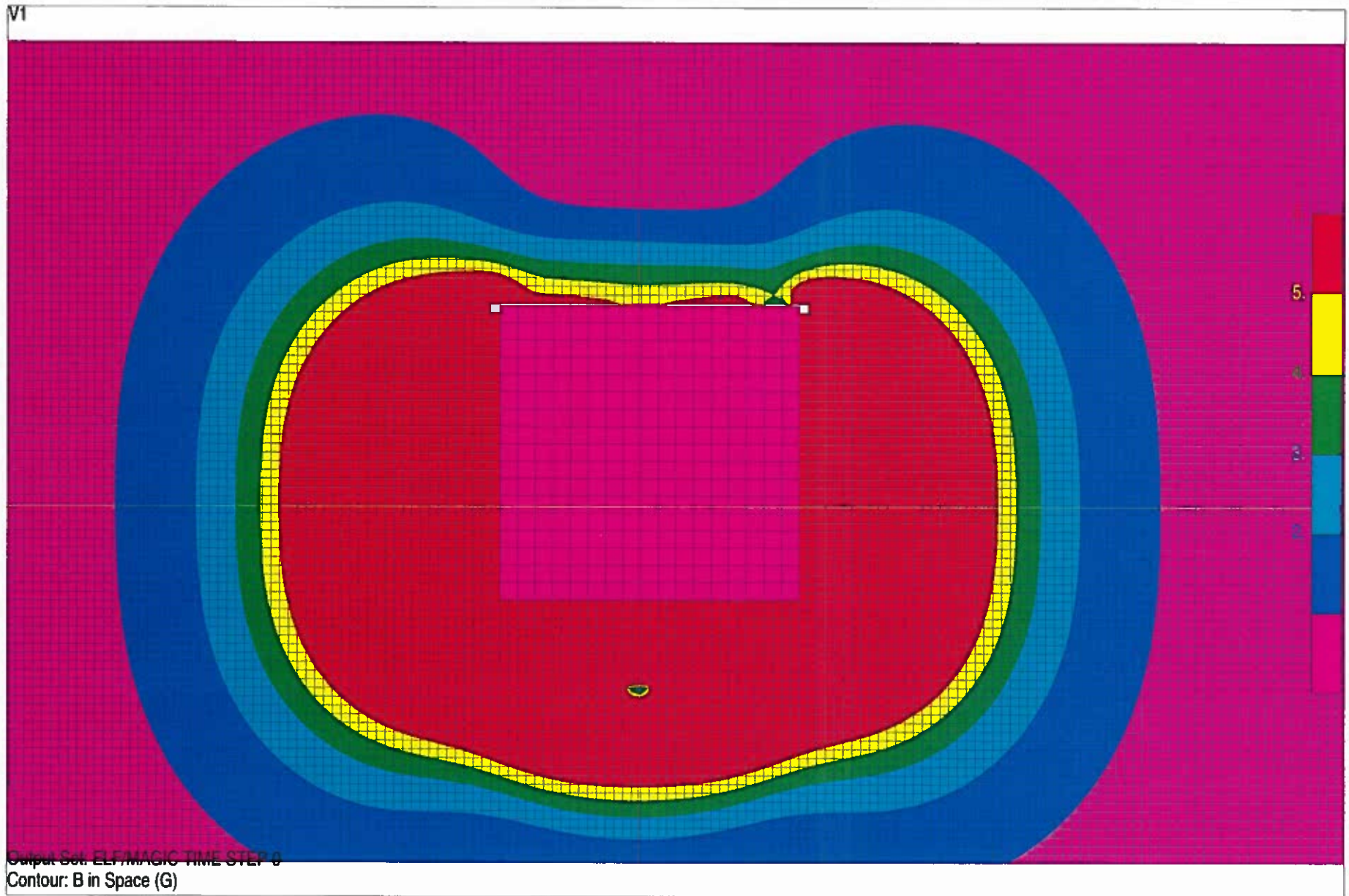


M36: 2mm LT, 1mm CLG starting 8'-6" from back wall, ending 10'-6" from front wall



VA MHC, Fayetteville, AR

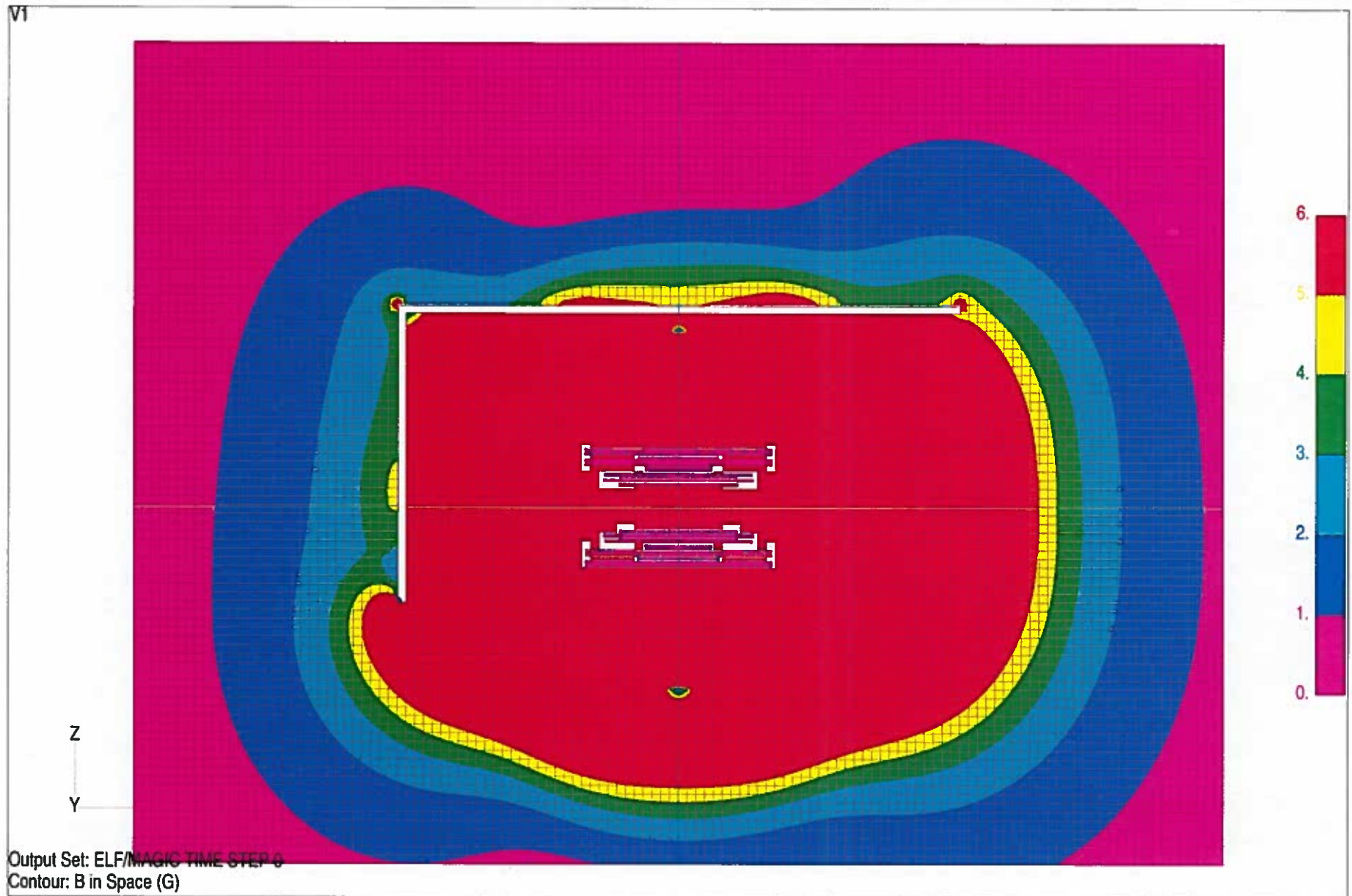
Left side view



M36: 2mm LT, 1mm CLG starting 8'-6" from back wall, ending 10'-6" from front wall

VA MHC, Fayetteville, AR

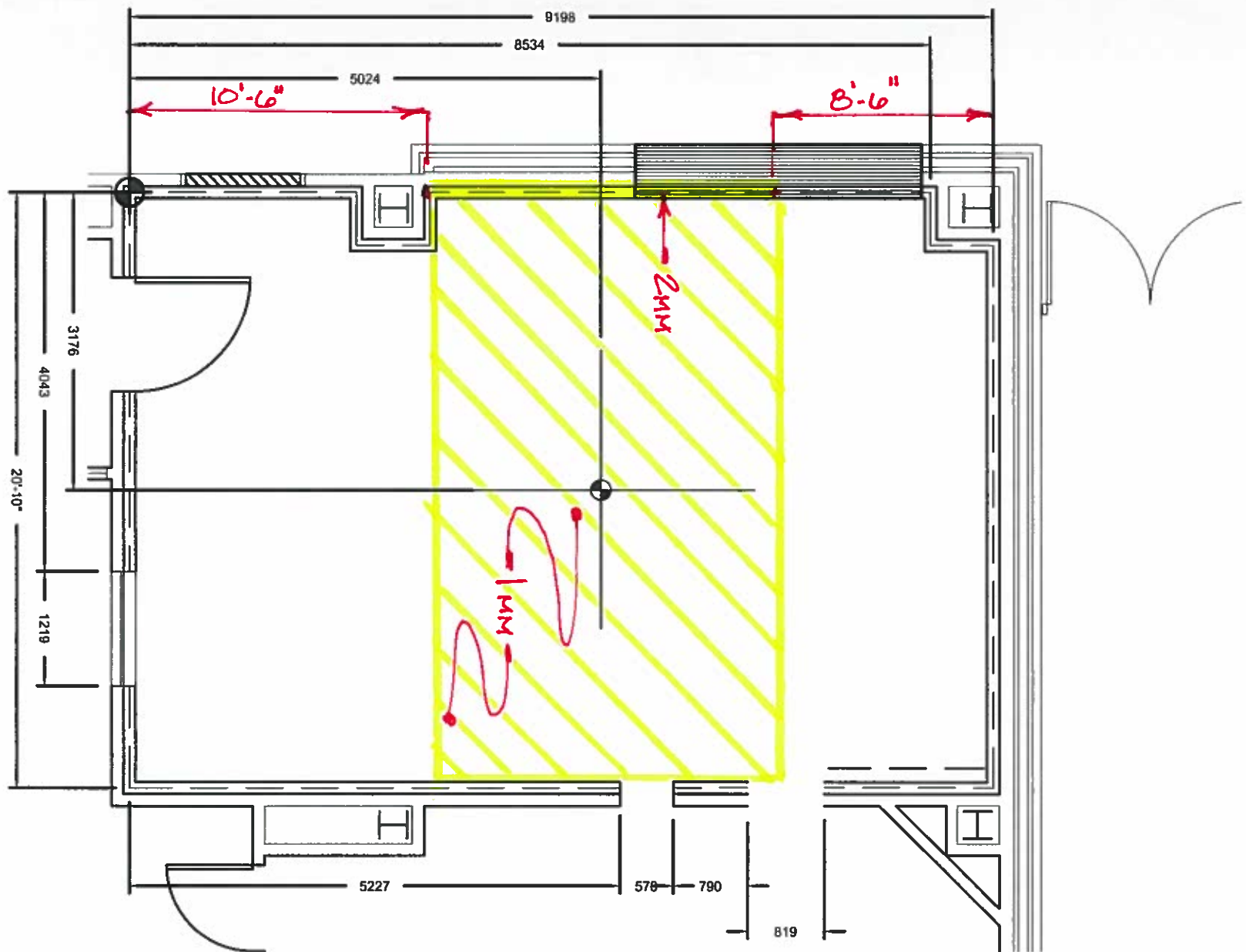
Front view



M36: 2mm LT, 1mm CLG starting 8'-6" from back wall, ending 10'-6" from front wall



OPPTY # 100936



**HITACHI**  
Inspire the Next

HITACHI MEDICAL SYSTEMS, AMERICA  
1959 SUMMIT COMMERCE PARK TWINSBURG, OH 44087-2371  
(800) 800-3106 WWW.HITACHIMED.COM

**OASIS** SITE PLAN PROPOSAL FOR:

VA MCH  
Fayetteville, AR

DATE: 03/03/2008 DRAWN BY: JCK  
SCALE: AS NOTED

**FOR DISCUSSION  
PURPOSES ONLY**  
CONSULT SITE PLANNING PRIOR TO  
PREPARATION OF CONSTRUCTION  
DOCUMENTS