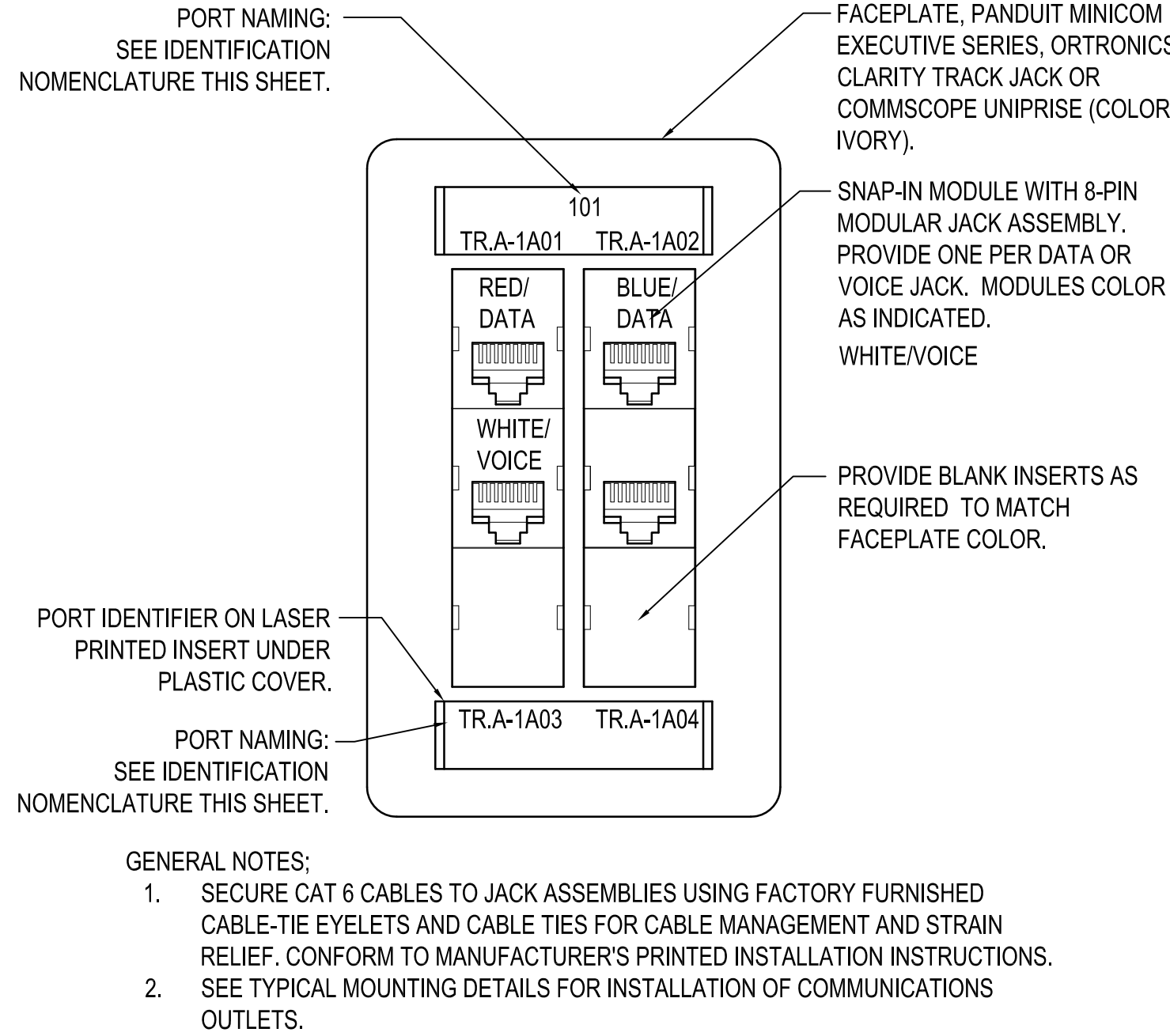
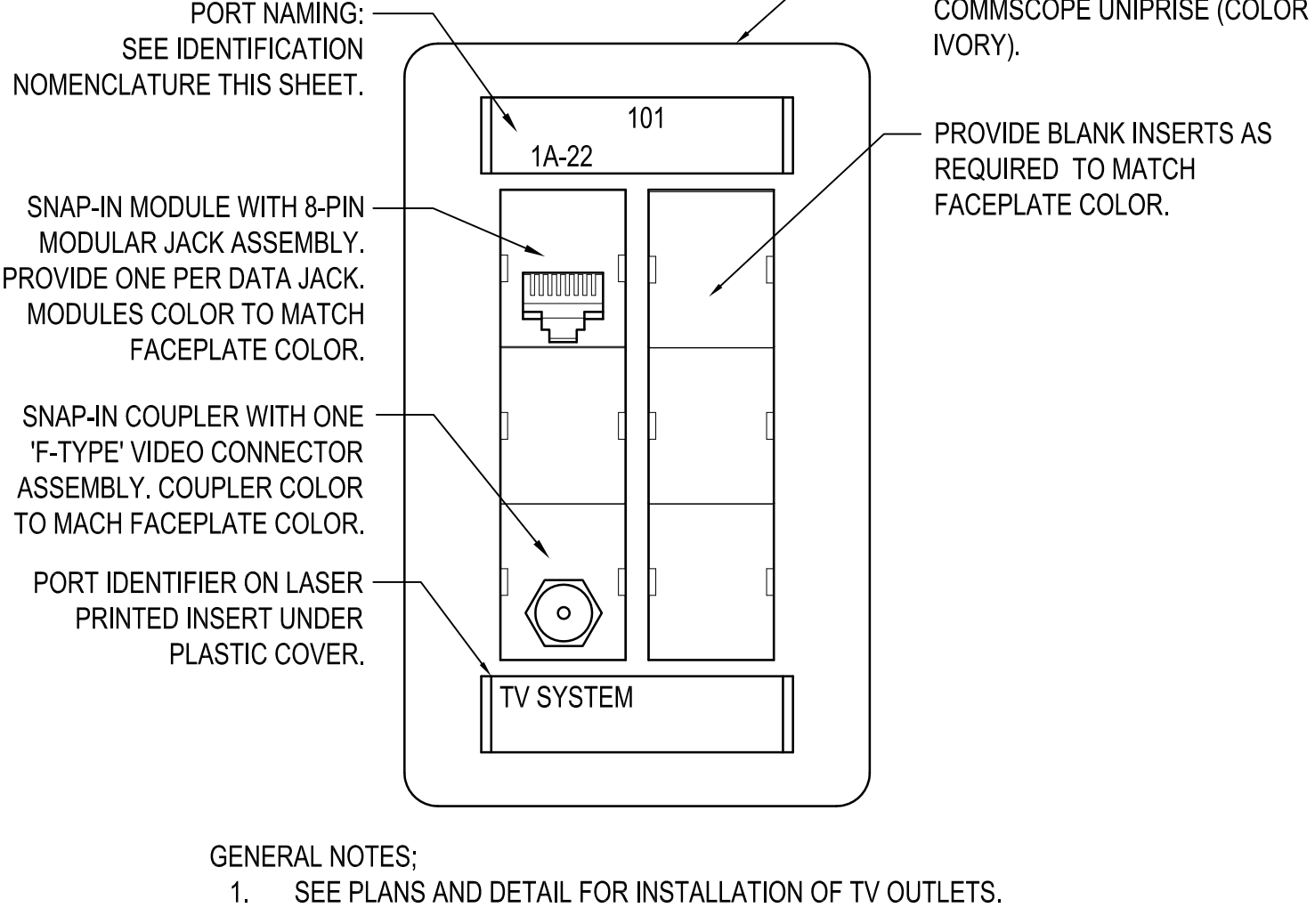


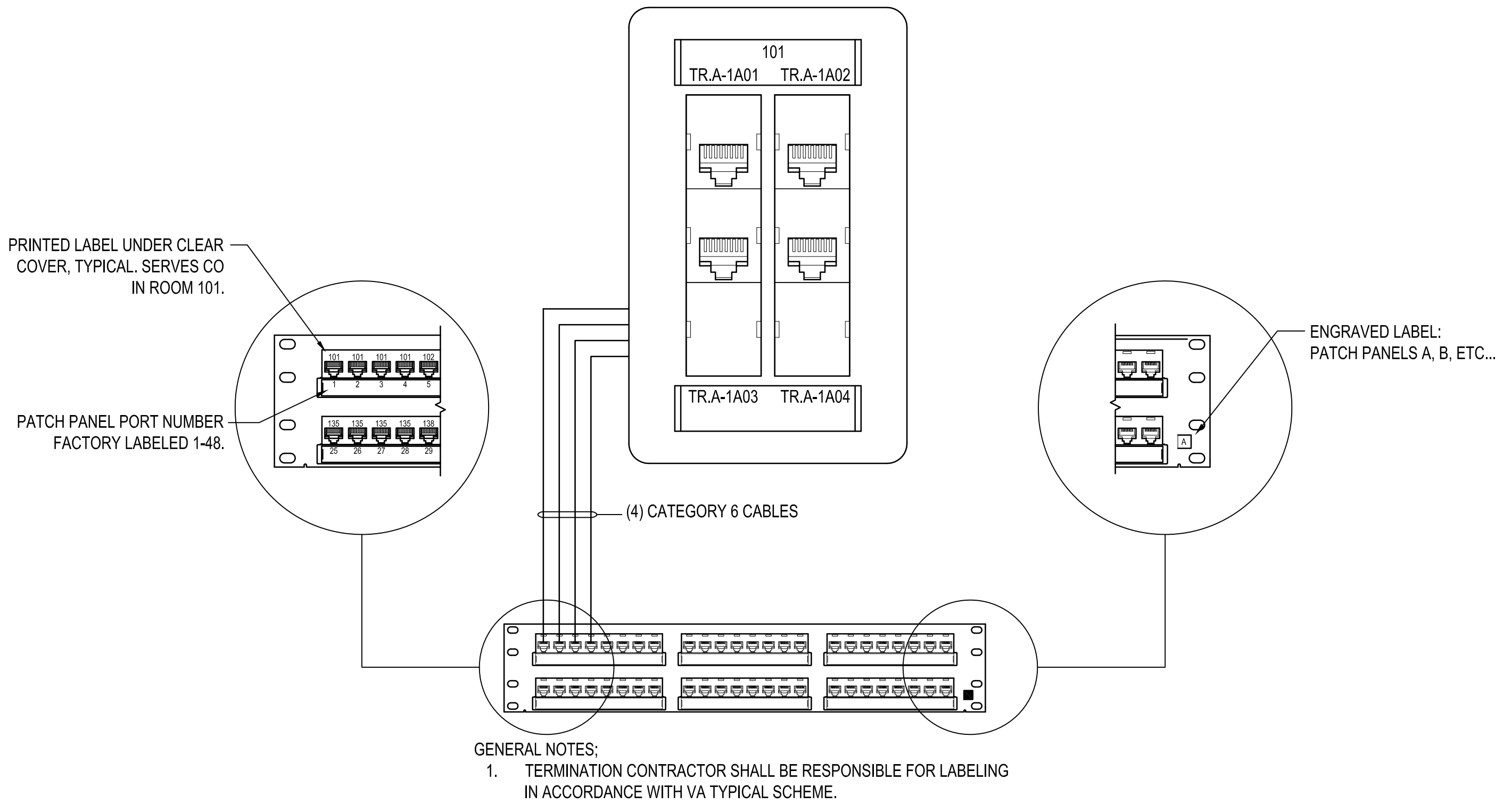
A three inches = one foot
B one and one half inches = one foot
C one inch = one foot
D three quarters inch = one foot
E one half inch = one foot
F one quarter inch = one foot
G one eighth inch = one foot



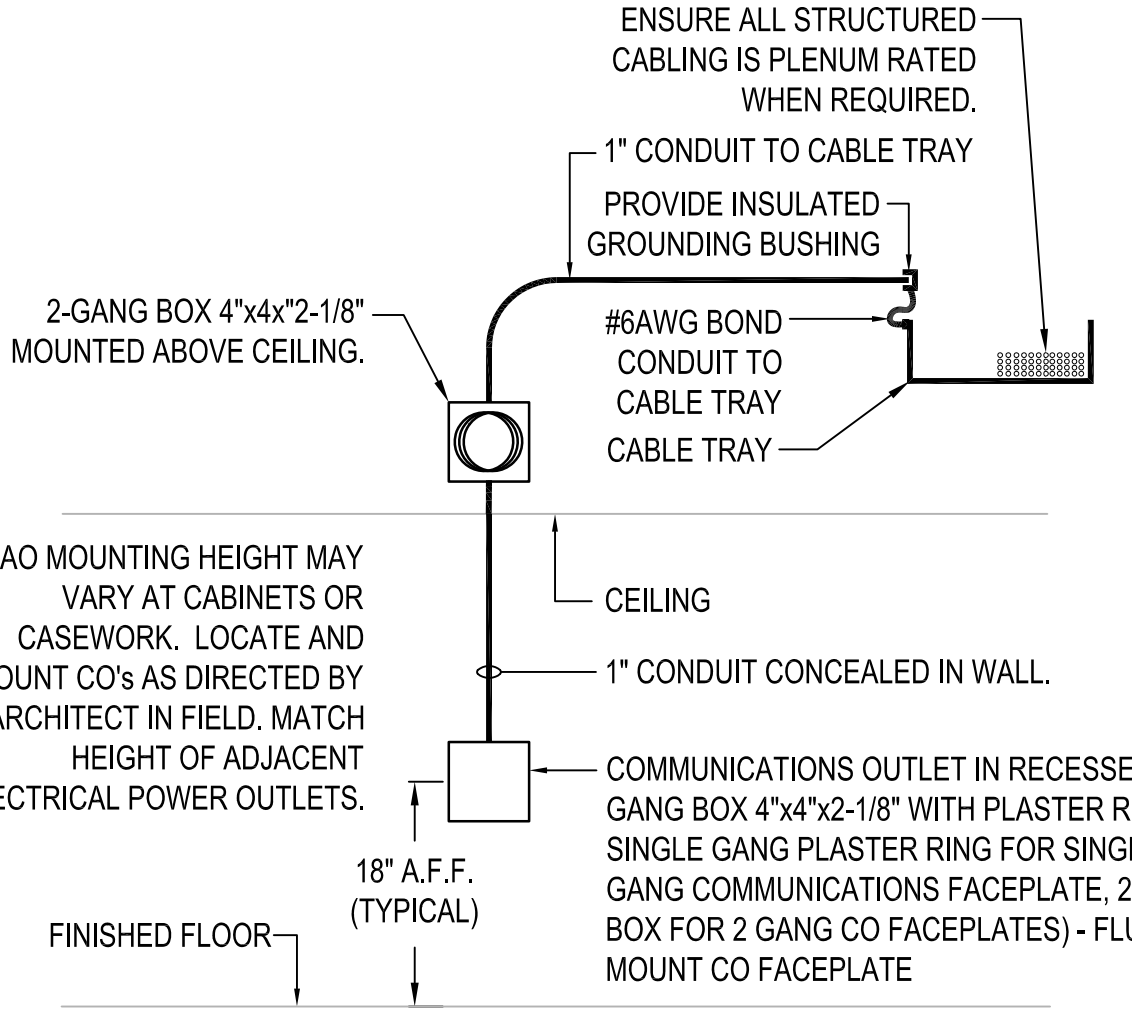
1 TYPICAL COMMUNICATIONS OUTLET - FACEPLATE DETAIL
SCALE : NTS



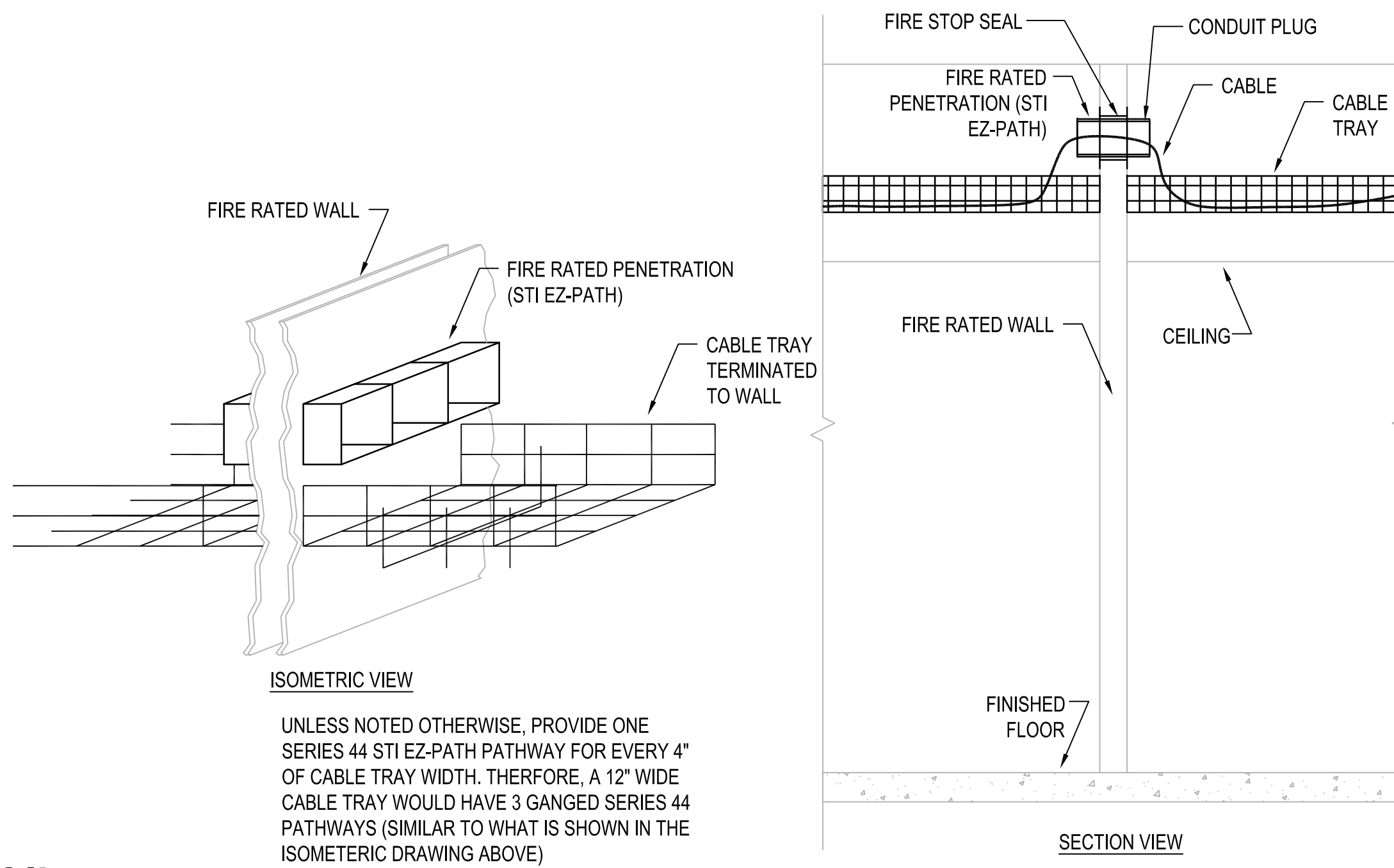
2 TELEVISION OUTLET - FACEPLATE DETAIL
SCALE : NTS



3 TYPICAL LABELING FROM CLOSET TO COMMUNICATIONS OUTLET DETAIL
SCALE : NTS



4 TYPICAL COMMUNICATIONS OUTLET - MOUNTING DETAIL
SCALE : NTS

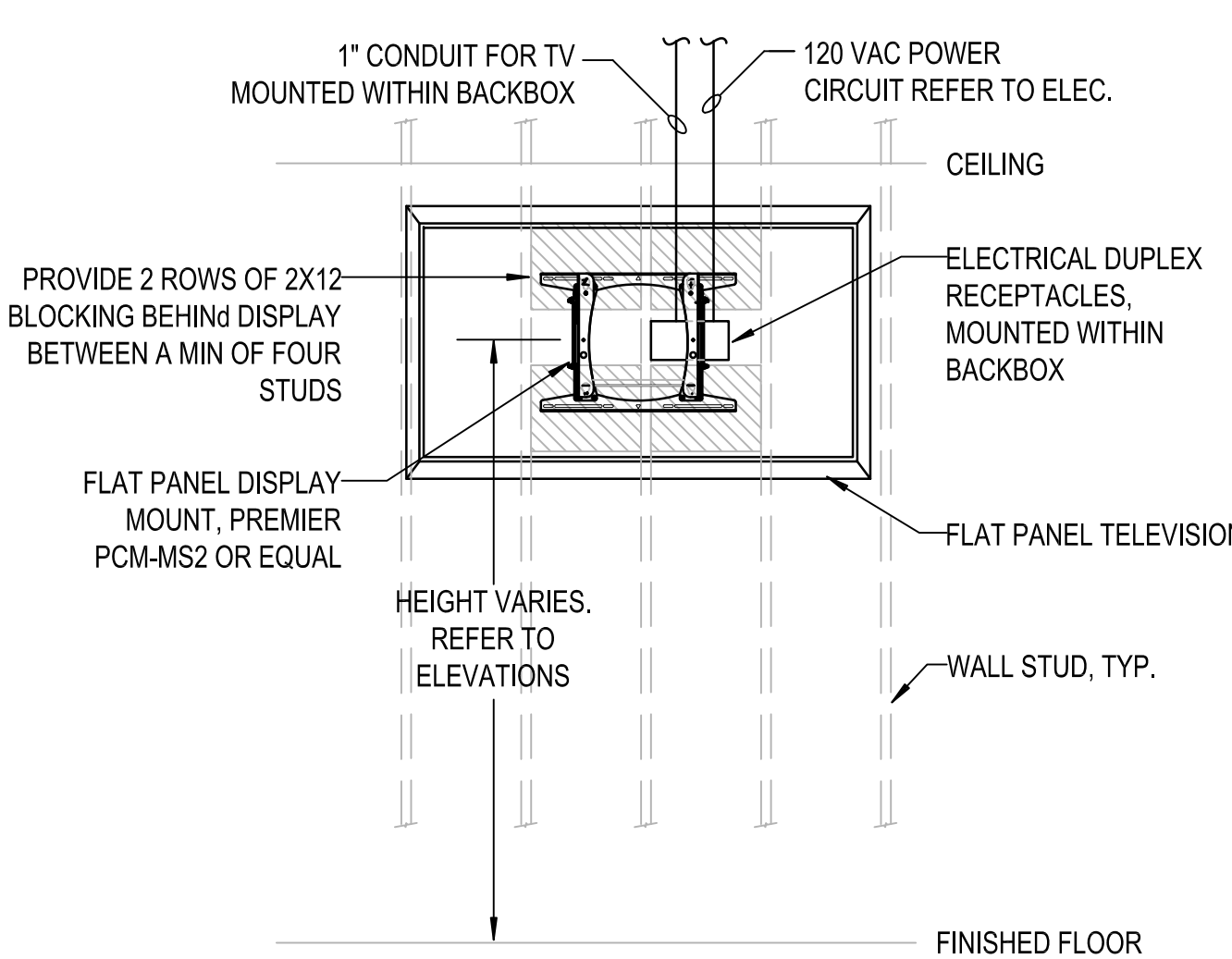


5 FIRE RATED CABLE TRAY PENETRATION DETAIL
SCALE : NTS

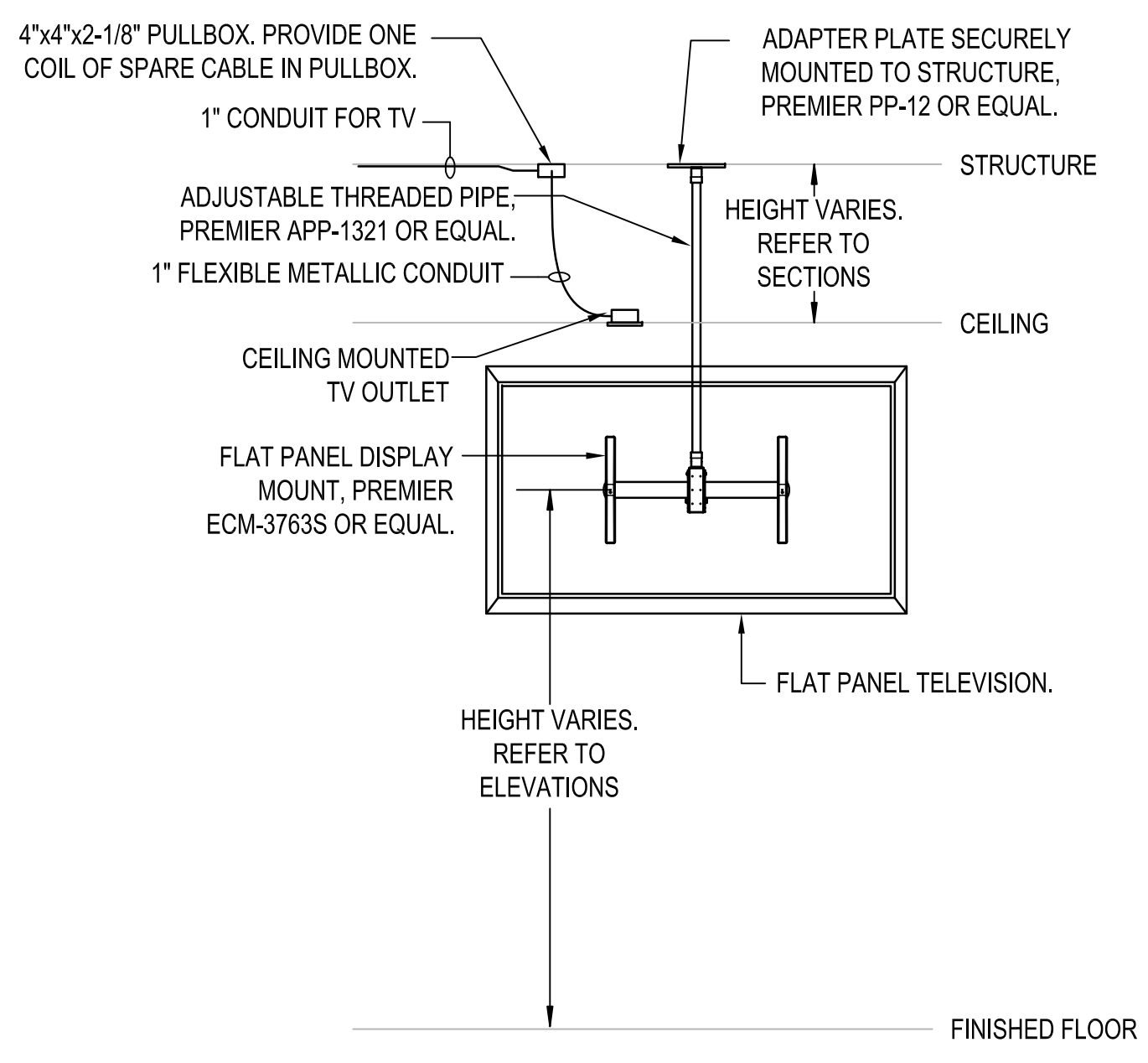
FIRE STOPPING NOTE

THE CONTRACTOR SHALL FIRESTOP ALL PENETRATIONS OF ALL FLOORS AND ALL WALLS WHICH EXTEND TO THE UNDERSIDE OF THE FLOOR OR ROOF DECK ABOVE. FIRESTOPPING SHALL BE ACCOMPLISHED AFTER ALL CABLES ARE PULLED (ALL SYSTEMS) USING UL CLASSIFIED SYSTEMS WITH FIRE RATING EQUAL TO OR GREATER THAN THE FIRE RATING OF THE FLOOR OR WALL ASSEMBLY PENETRATED. FIRESTOP SYSTEMS SHALL BE 3M, NELSON OR ENGINEER APPROVED EQUAL. INSTALL IN ACCORDANCE WITH THE MANUFACTURER'S PRINTED INSTRUCTIONS. THE CONTRACTOR SHALL SUBMIT A MANUFACTURER'S STANDARD DETAIL FOR EACH TYPE OF FLOOR AND WALL PENETRATION REQUIRED FOR THIS PROJECT. ALL OTHER PENETRATIONS OR OPENINGS IN NON-FIRE RATED WALLS SHALL BE REPAIRED AND SEALED WITH MATERIALS TO MATCH THE EXISTING CONSTRUCTION.

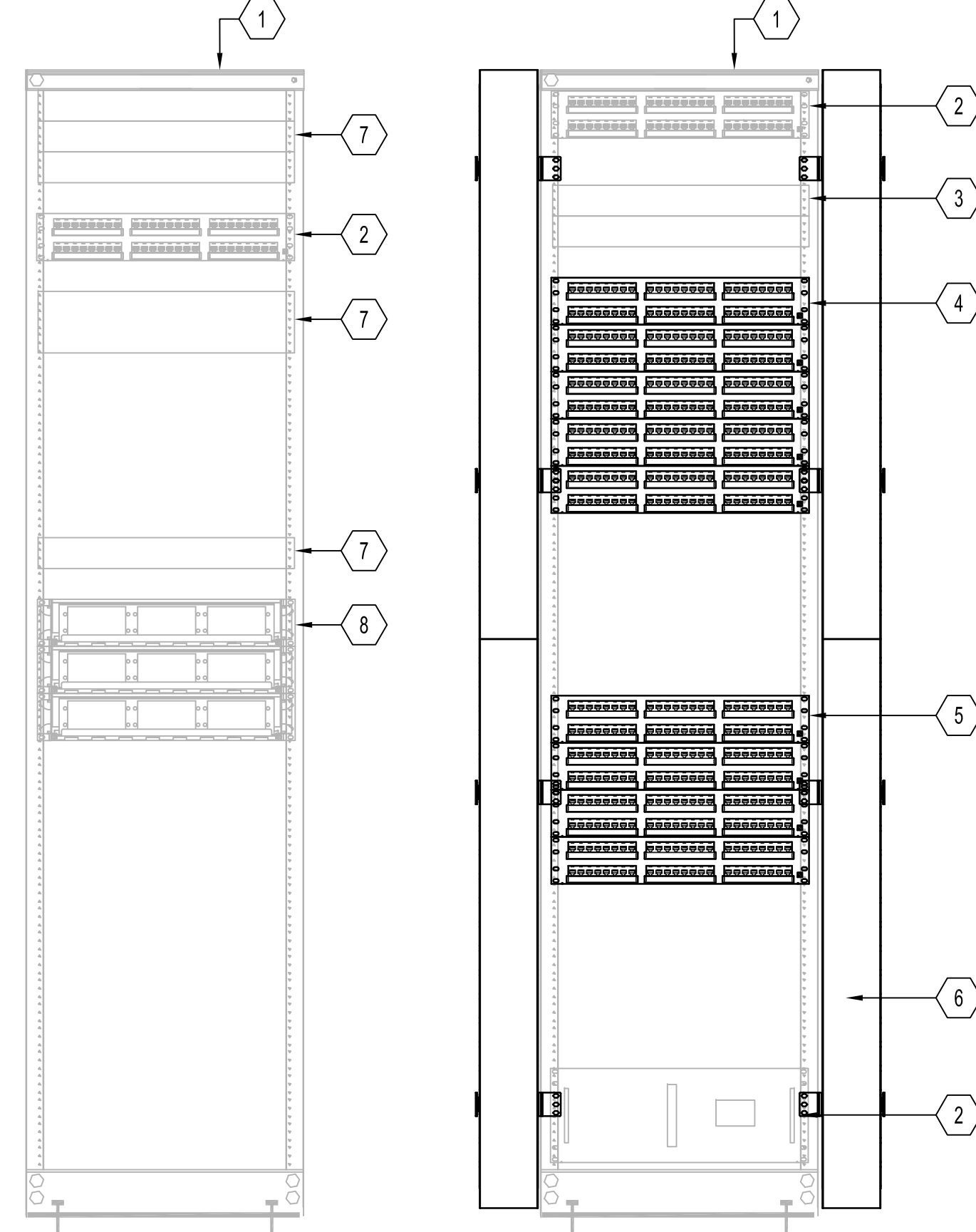
EXISTING AND NEW CONDUITS THROUGH FIRE RATED CONSTRUCTION REQUIRE CONDUIT PLUGS.



6 FLAT PANEL TELEVISION AND CONDUIT ROUGH-IN DETAIL
SCALE : NTS





7 FLAT PANEL TELEVISION AND CONDUIT ROUGH-IN DETAIL
SCALE : NTS



8 TELECOMMUNICATIONS RACK ELEVATIONS
SCALE : NTS

- COMMUNICATIONS RACK KEYNOTES**
- 1 EXISTING TELECOMMUNICATIONS RACK TO REMAIN.
 - 2 EXISTING 48 PORT HORIZONTAL PATCH PANEL TO REMAIN.
 - 3 EXISTING NETWORK EQUIPMENT TO REMAIN. RELOCATE TO TOP OF RACK TO ALLOW INSTALLATION OF NEW PATCH PANELS.
 - 4 NEW 48 PORT CATEGORY 6 HORIZONTAL WIRING DATA PATCH PANEL. QUANTITY AS REQUIRED.
 - 5 NEW 48 PORT CATEGORY 6 HORIZONTAL WIRING VOICE PATCH PANEL. QUANTITY AS REQUIRED.
 - 6 INSTALL NEW DOUBLE-SIDED 4" WIDE VERTICAL CABLE MANAGEMENT CHANNELS ON OUTSIDES OF EXISTING RACK.
 - 7 EXISTING NETWORK EQUIPMENT TO REMAIN.
 - 8 EXISTING FIBER LIU/ PATCH PANEL TO REMAIN.

- GENERAL NOTES:**
- 1. PROVIDE VELCRO TIE WRAPS AT 6" SPACING FOR VERTICAL RUNS AND 12" SPACING FOR HORIZONTAL RUNS OF BUNDLED CABLES.
 - 2. PROVIDE "D" RINGS AT 12" SPACING FOR VERTICAL RUNS OF BUNDLED CABLES.
 - 3. ENSURE ALL EQUIPMENT IS PROPERLY BONDED TO EXISTING TELECOMMUNICATIONS BUS BAR. FIELD VERIFY AND INSTALL ANY ADDITIONAL BONDING CABLES AS REQUIRED.
 - 4. NEATLY ROUTE NEW CAT 6 CABLEING FROM PATCH PANEL TO NEW VERTICAL CABLE MANAGEMENT CHANNEL.

<div>SHEET ADDED FOR ADDENDUM 1</div> <div>Revisions: ADDENDUM 1</div>		<div>CONSULTANTS:</div>	<div></div>	<div>ARCHITECT/ENGINEERS:</div> <div><div><div>BES</div><div>DESIGN/BUILD</div></div><div>BES DESIGN/BUILD, LLC 766 Middle St, Fairhope, AL 36532 Phone: 251.990.5778 Fax: 251.990.3716</div></div>	<div>Drawing Title</div> <div>TELECOMMUNICATIONS - DETAILS</div>		<div>Project Title</div> <div>RENOVATE PRIMARY CARE - PATIENT ALIGNED CARE TEAM SPACE</div>		<div>Project Number</div> <div>598-13-110</div>		<div>CENTRAL ARKANSAS VETERANS AFFAIRS HEALTHCARE SYSTEM</div> <div> Department of Veterans Affairs</div>		
					<div>Approved: Project Director</div>		<div>Location</div> <div>EUGENE J. TOWBIN HEALTH CARE CENTER NORTH LITTLE ROCK, ARKANSAS</div>		<div>Building Number</div> <div>170</div>			<div>Drawing Number</div> <div>ET501</div>	
					<div>Date</div> <div>03-17-2015</div>	<div>Drawn</div> <div>KCC</div>	<div>Checked</div> <div>MCE</div>	<div>Dwg. of</div>					