

June 24, 2014

Mike Jimenez
George E. Wahlen Department of Veterans Affairs Medical Center
500 Foothill Drive
Salt Lake City, UT 84148

Project: VA259-15-R-0215 Electrical Coordination Construction Services

RE: **ADDENDUM 1**

Mike:

Please forward the following clarifications to the contractor on the above reference project.

Questions:

1. On Drawing EP402 transformer marked 1-G-A-L-TR1 FEEDS PANEL 1-G-A-L-D1 (E3). This transformer is currently fed from the 400A disconnect that is next to it. In a previous job at this campus this 400A disconnect was installed to re-feed the transformer in question. The new/ temporary feed that feeds this transformer comes from one of the 4" conduits that is to be the new feed for the new transformer labeled as 1-G-A-E-TR2. The original 480V feed to transformer 1-G-A-L-TR1 via ATS-3 is fed with #4 THHN. These #4's come directly out of the transfer switch. ATS 3 is fed from a 200A breaker on the normal power side and EM power side, which then feeds the transformer. The conduit that is in place from 42 into GA01 is only a 1-1/4" conduit. Transformer 1-G-A-L-TR1 is going to have to be re-fed from something before the 4" conduits can be used. Once again panels in question ATS-3, TRANSFORMER 1-G-A-L-TR1, LIFE SAFETY SWITCHBOARD 1-G-A-L-D1 (E3).

Answer: disconnect 500 MCM / 400A disconnect and connect #4 / 200 A disconnect fed. See attached sketches EP-401-R1-1 and EP-401-R1-2.

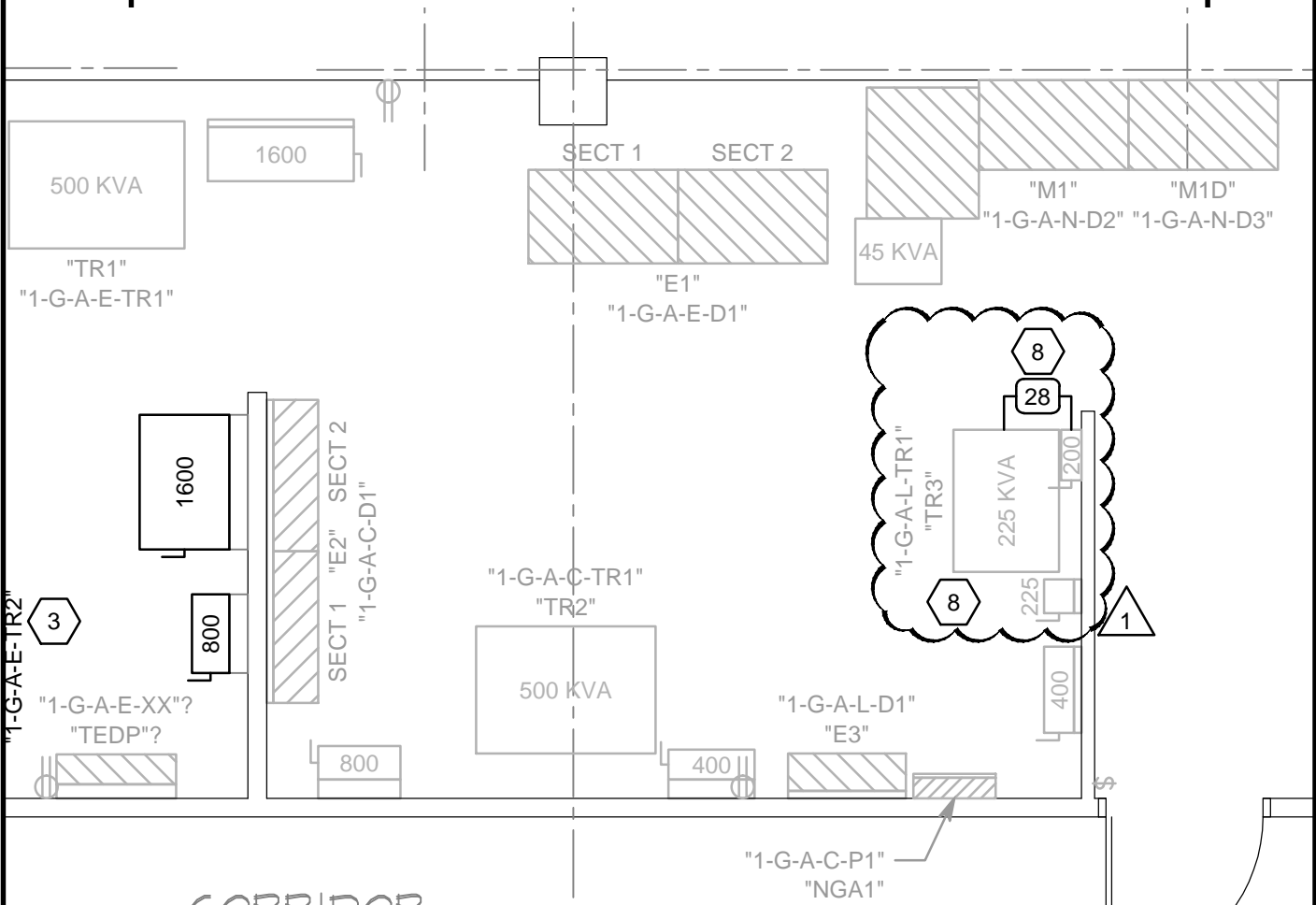
2. On page EP601 the one line calls out for existing 2ea 4" conduits for the new feeds to Transformer 1-G-A-E-TR2, and the new feed to the existing 1-G-A-E-TR1. These conduits leave building 42 as 4" conduits but enter GA01 differently. 3 out of 4 of them are 3-1/2" instead of them all being 4". They are also 3-1/2" in GA01 as well. The 3-1/2" will not work for the Amperage and wire size that is called out for on the drawings.

Answer: change ground cable to 2/0. See attached sketch EP-601-R1-1.



William Felt, PE, LEED AP
Associate Principal

5. INSTALL NEW CONCRETE PAD TO BE FLUSH WITH EXISTING.
6. NEW 3'-0"+3'-0" DOUBLE DOOR MATCH EXISTING HARDWARE AND LOCKS.
7. PROVIDE NEW 800 AMP BREAKER SQUARE Q NT08L1 MASTERPACK.
8. DISCONNECT 500 MCM CABLES FROM "1-G-A-L-TR1" AND RUN A NEW CONDUIT AND CONDUCTOR FROM EXISTING 200 AMP DISCONNECT ON LEFT HAND SIDE OF TRANSFORMER TO TRANSFORMER "1-G-A-L-TR1". COORDINATE LIFE SAFETY SHUT DOWN WITH VA.
9. DISCONNECT 500 MCM CABLE FEED UTILIZING ONE OF THE 4-INCH CONDUITS REQUIRED FOR THIS PROJECT. RECONNECT THE OLD #4 AWG CABLES FEEDING THE 800 AMP DISCONNECT TO THE LEFT OF TRANSFORMER "1-G-A-L-TR1". COORDINATE LIFE SAFETY SHUT DOWN WITH VA.



324 S. State St., Suite 400
Salt Lake City, UT 84111
800-678-7077 801-328-5151
fax: 801-328-5155
www.spectrum-engineers.com
© 2014 Spectrum Engineers, Inc.

REFERENCE:	EP401
ISSUE:	ADDENDUM#01
DATE:	2015-03-19
PROJ NO:	660-15-36S
DRAWN BY:	PSS
CHECKED BY:	WNF

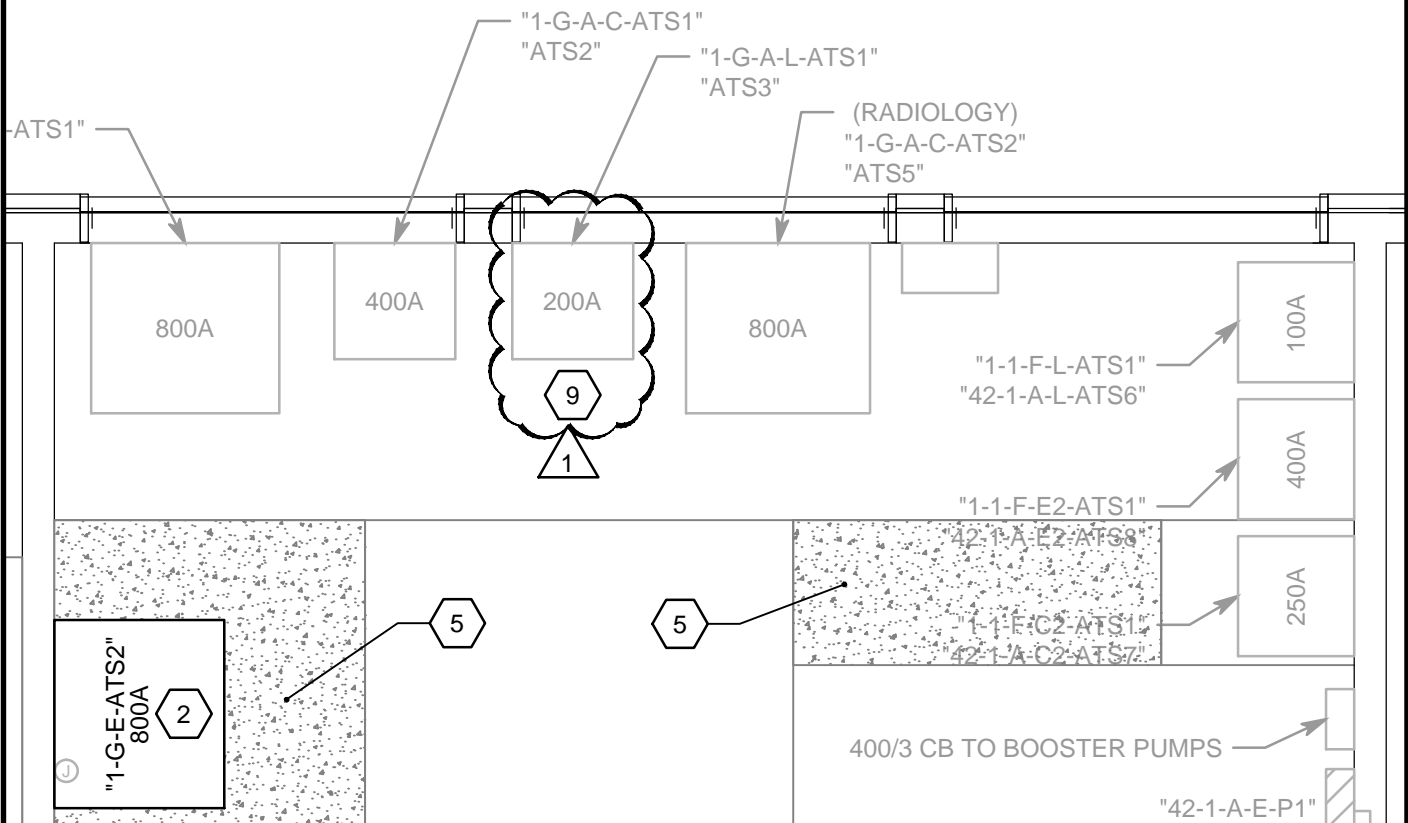
PROJECT
ELECTRICAL COORDINATION

SHEET TITLE
ELECTRICAL ROOM GA01 - PHASE 1

SCALE
1/4"=1'-0"

EP401-R1-1

5. INSTALL NEW CONCRETE PAD TO BE FLUSH WITH EXISTING.
6. NEW 3'-0"X3'-0" DOUBLE DOOR MATCH EXISTING HARDWARE AND LOCKS.
7. PROVIDE NEW 800 AMP BREAKER SQUARE Q NT08L1 MASTERPACK.
8. DISCONNECT 500 MCM CABLES FROM "1-G-A-L-TR1" AND RUN A NEW CONDUIT AND CONDUCTOR FROM EXISTING 200 AMP DISCONNECT ON LEFT HAND SIDE OF TRANSFORMER TO TRANSFORMER "1-G-A-L-TR1". COORDINATE LIFE SAFETY SHUT DOWN WITH VA.
9. DISCONNECT 500 MCM CABLE FEED UTILIZING ONE OF THE 4-INCH CONDUITS REQUIRED FOR THIS PROJECT. RECONNECT THE OLD #4 AWG CABLES FEEDING THE 200 AMP DISCONNECT TO THE LEFT OF TRANSFORMER "1-G-A-L-TR1". COORDINATE LIFE SAFETY SHUT DOWN WITH VA.



324 S. State St., Suite 400
Salt Lake City, UT 84111
800-678-7077 801-328-5151
fax: 801-328-5155
www.spectrum-engineers.com
© 2014 Spectrum Engineers, Inc.

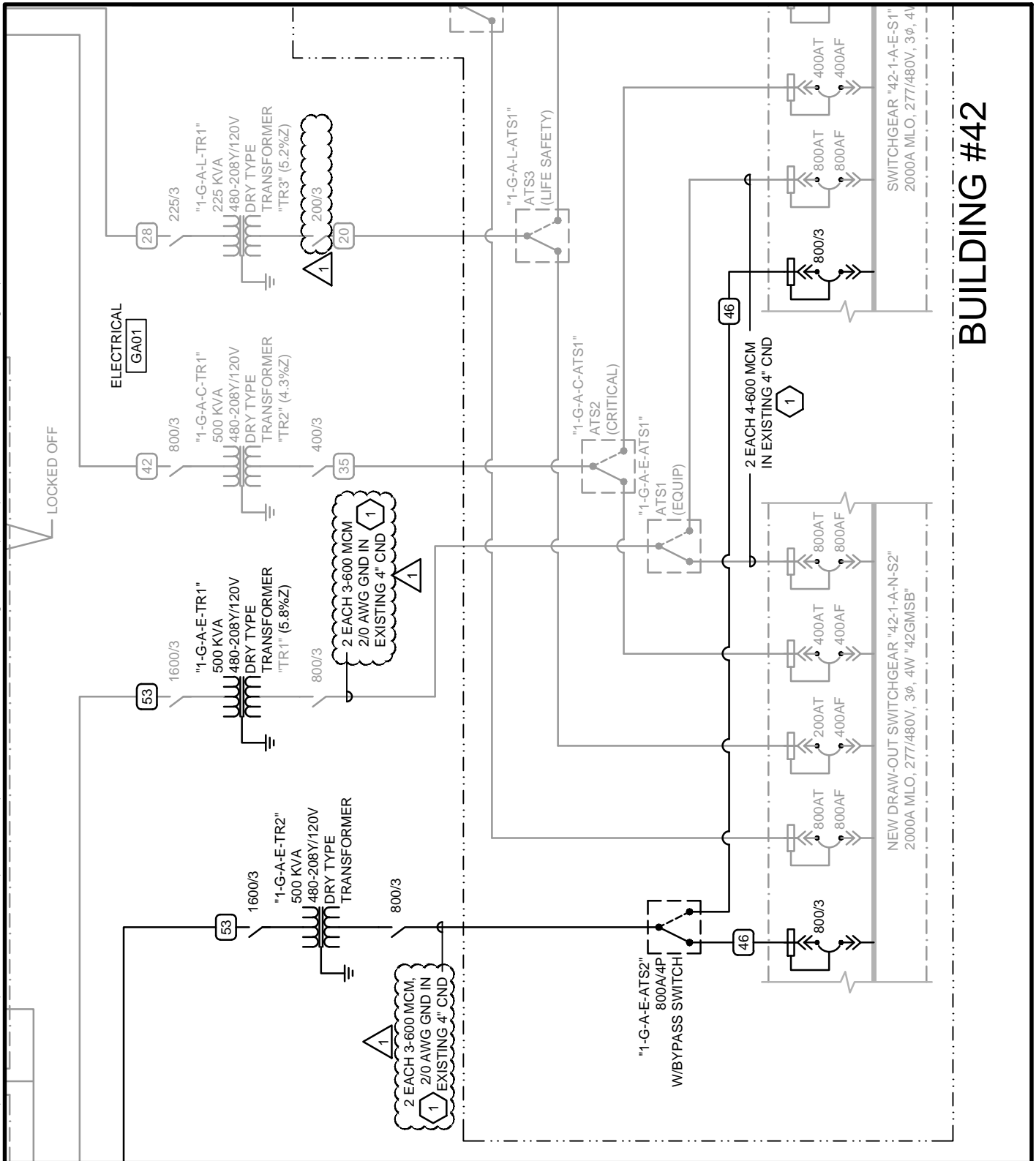
REFERENCE:	EP401
ISSUE:	ADDENDUM#01
DATE:	2015-03-19
PROJ NO:	660-15-36S
DRAWN BY:	PSS
CHECKED BY:	WNF

PROJECT
ELECTRICAL COORDINATION

SHEET TITLE
BLDG 42 ELECTRICAL ROOMS - PHASE 1

SCALE
1/4"=1'-0"

EP401-R1-2



BUILDING #42



324 S. State St., Suite 400
Salt Lake City, UT 84111
800-678-7077 801-328-5151
fax: 801-328-5155
www.spectrum-engineers.com
© 2014 Spectrum Engineers, Inc.

REFERENCE:	EP601
ISSUE:	ADDENDUM#01
DATE:	2015-03-19
PROJ NO:	660-15-36S
DRAWN BY:	PSS
CHECKED BY:	WNF

PROJECT
ELECTRICAL COORDINATION

SHEET TITLE
POWER RISER ONE-LINE DIAGRAM
BLDG#01 - MAIN BUILDING DISTRIBUTION

SCALE
NO SCALE

EP601-R1-1