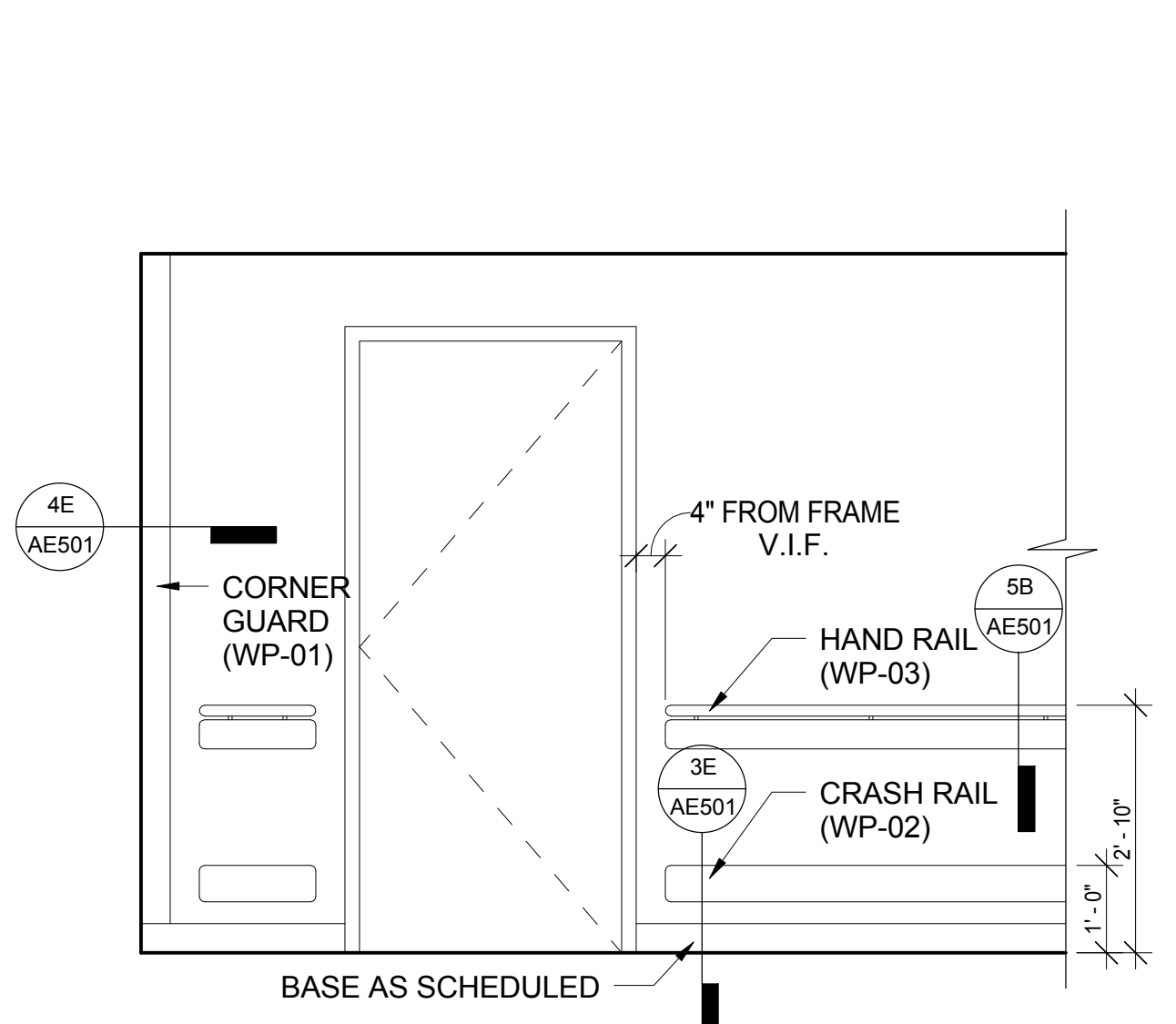
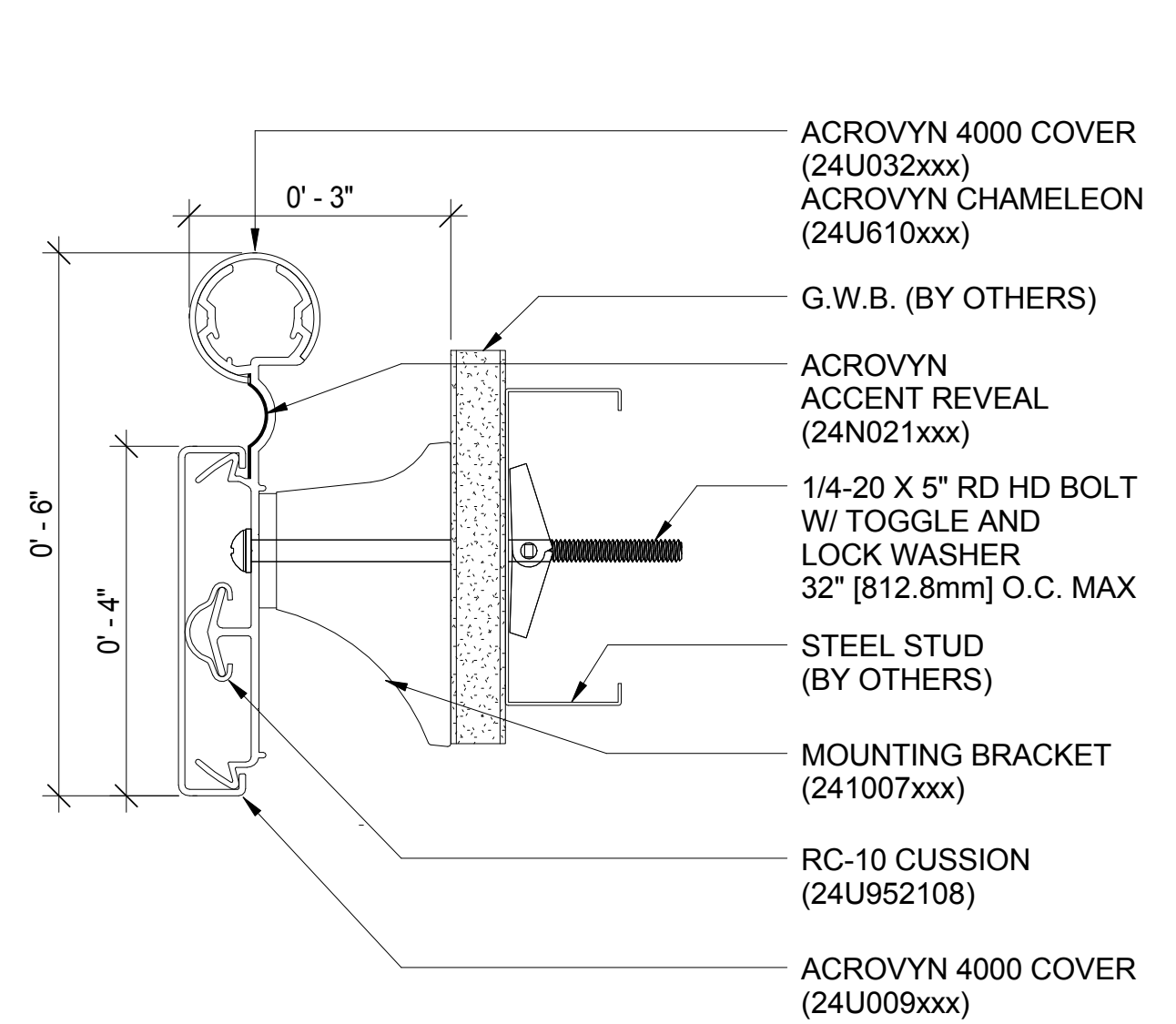


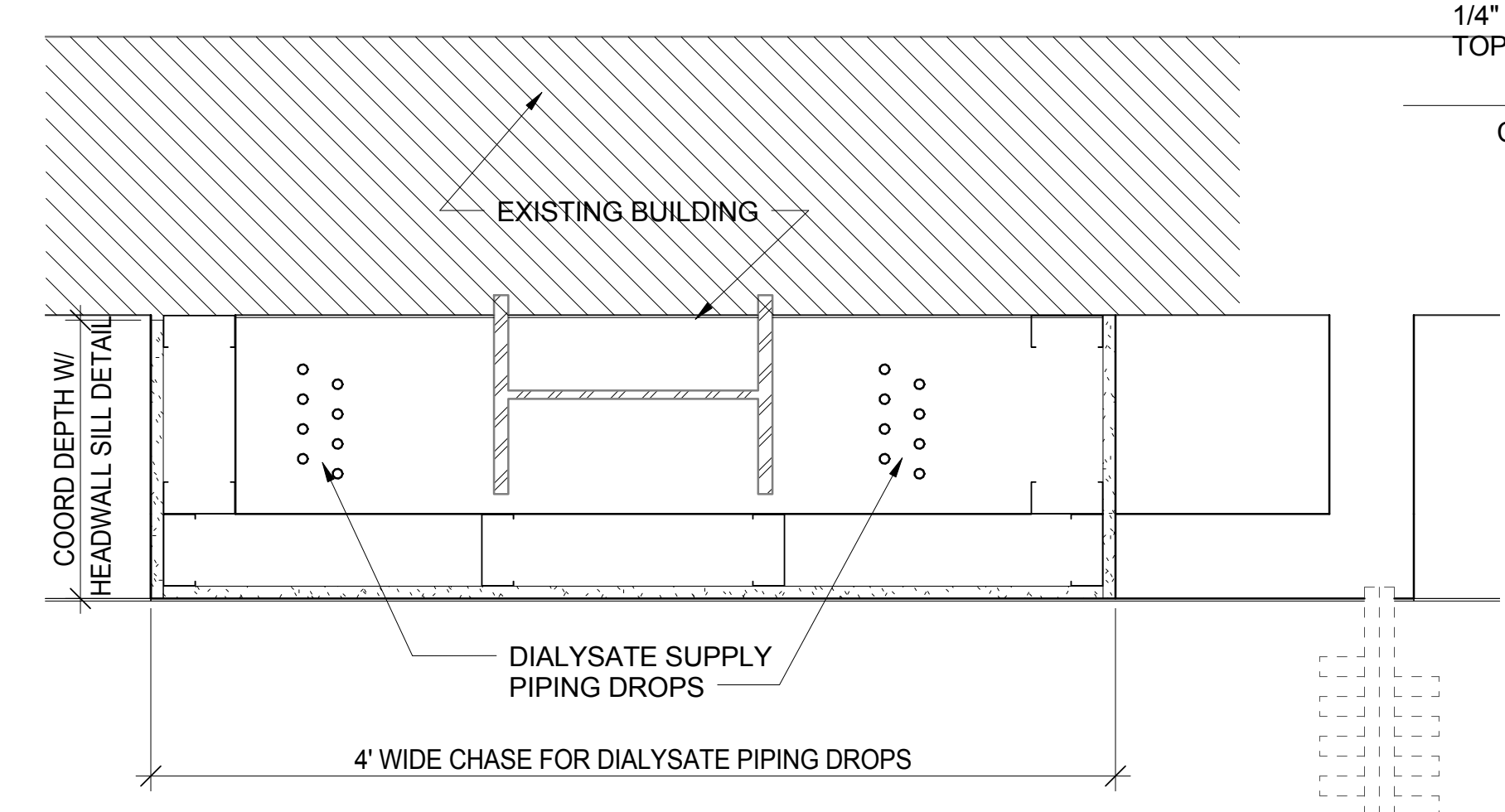
A
three inches = one foot
1
one and one half inches = one foot
6
2
one inch = one foot
6
C
three quarters inch = one foot
6
D
one half inch = one foot
6
E
three eighths inch = one foot
6
F
one quarter inch = one foot
6
G
one eighth inch = one foot
6
H
one sixteenth inch = one foot
6



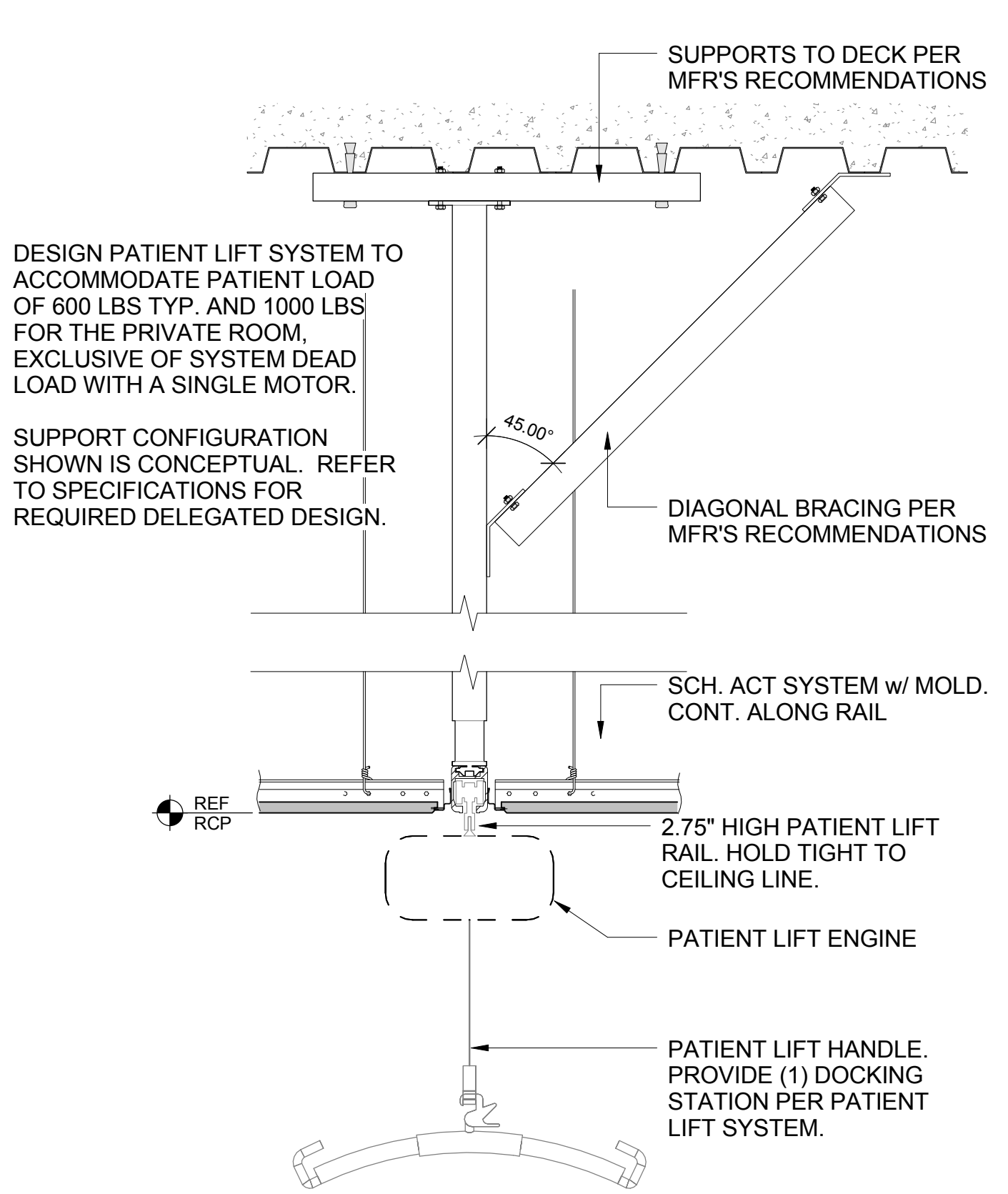
6B WALL PROTECTION DETAIL
1/2" = 1'-0"



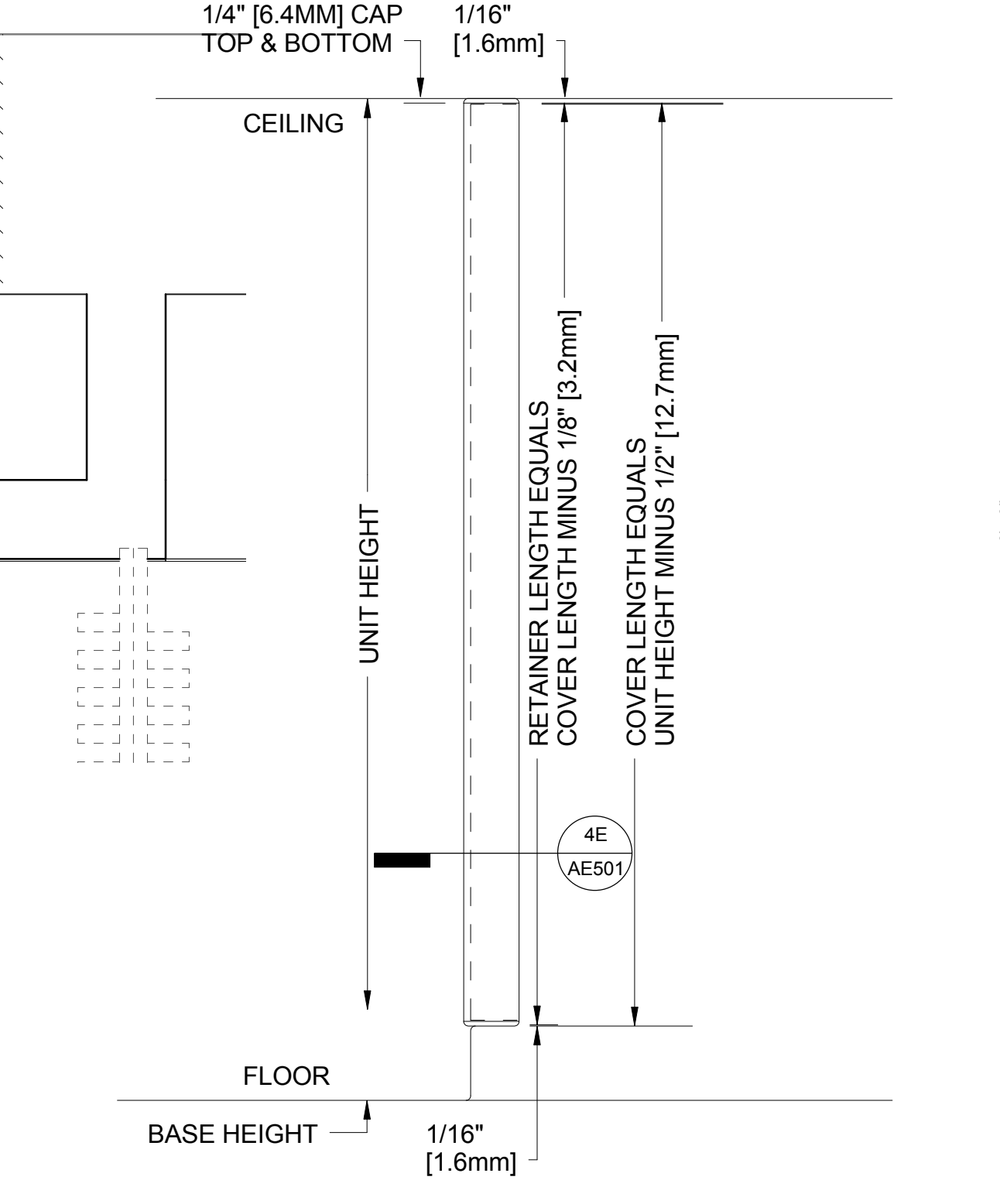
5B HANDRAIL (WP-03)
6" = 1'-0"



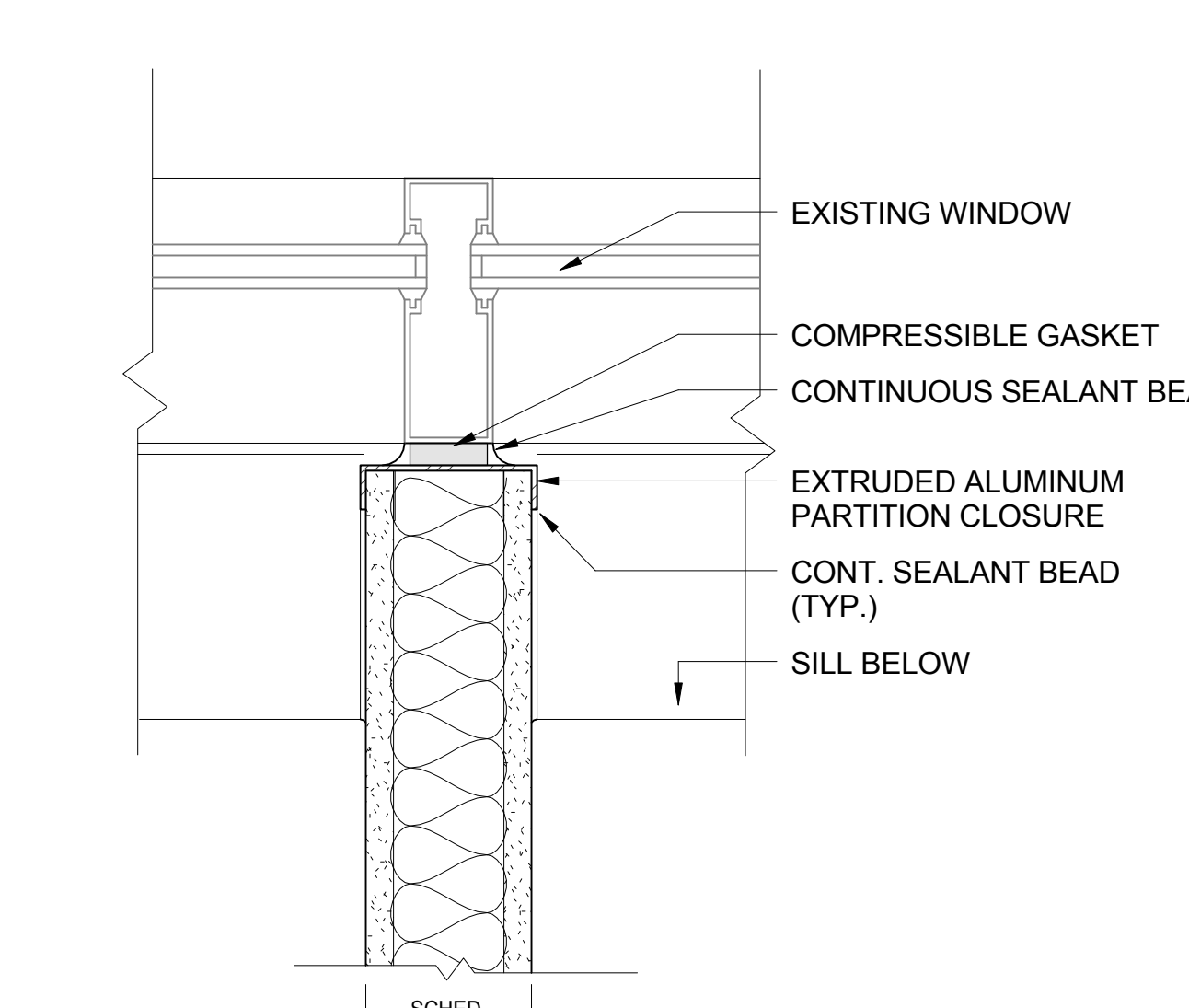
6C DIALYSIS CHASE WALL DETAIL
1 1/2" = 1'-0"



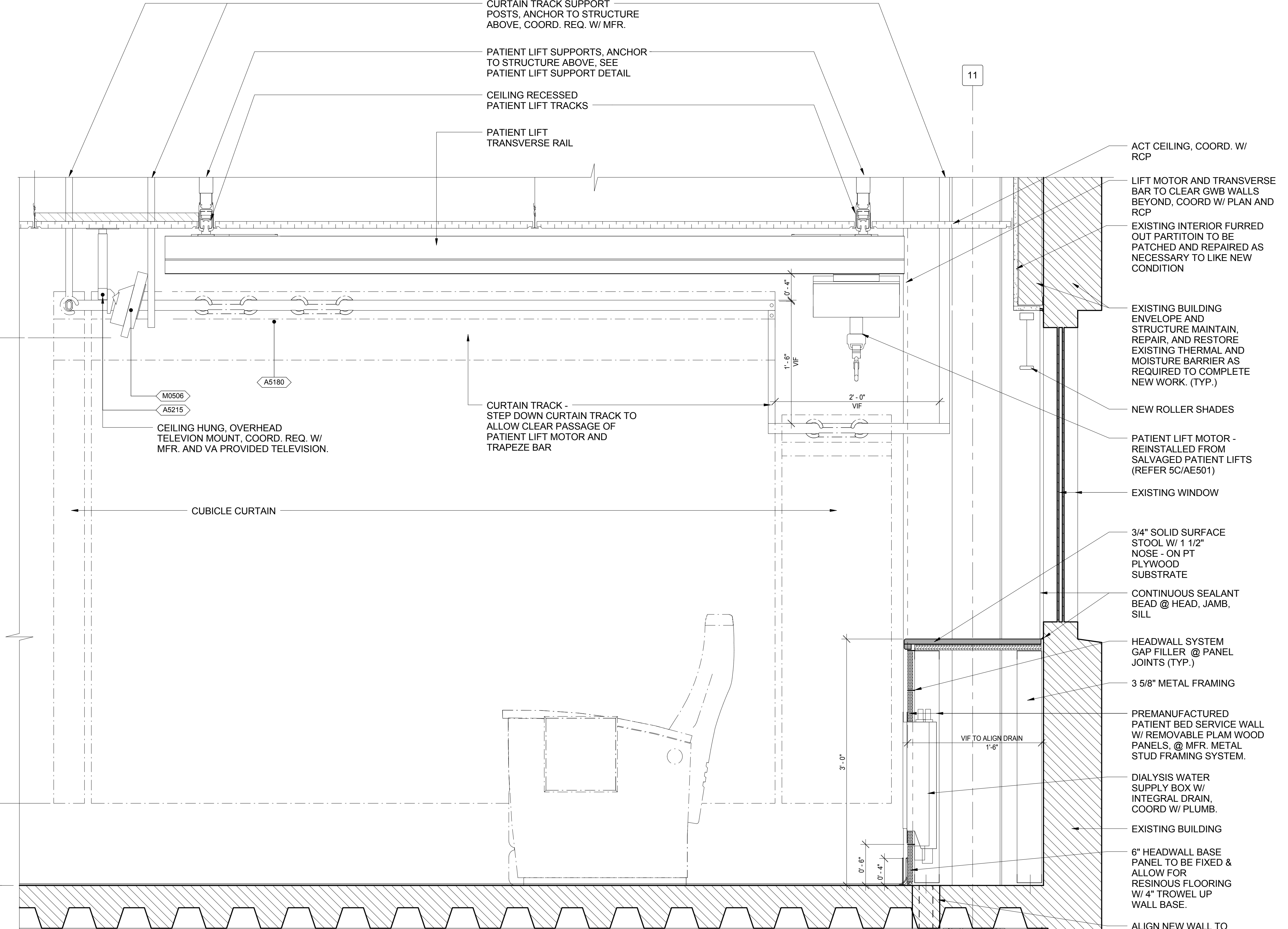
5C PATIENT LIFT TRACK SUPPORT
1 1/2" = 1'-0"



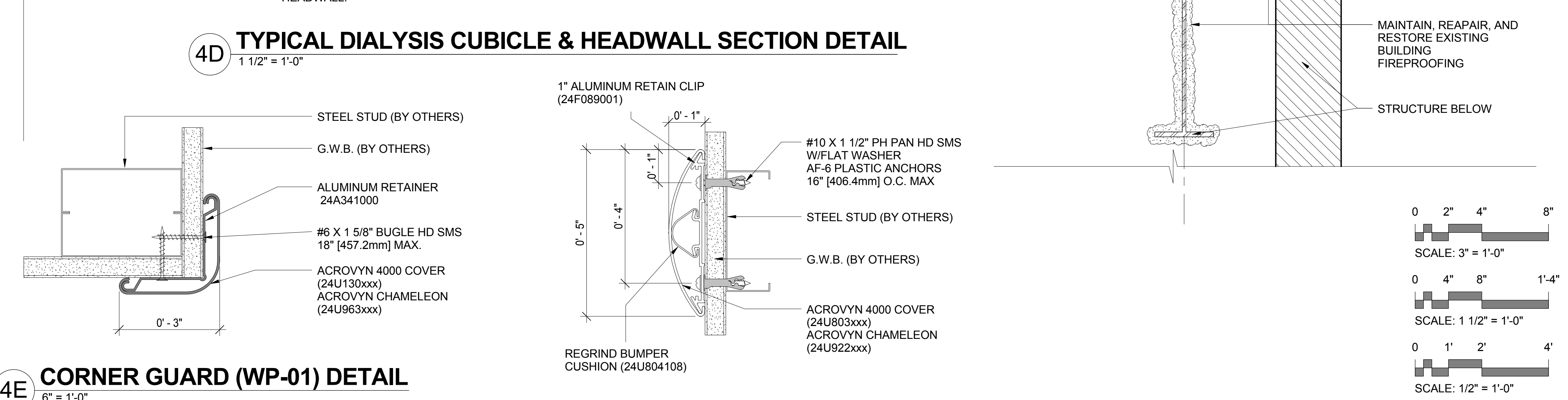
5D CORNER GUARD (WP-01)
1 1/2" = 1'-0"



5E PARTITION TO MULLION DETAIL
3" = 1'-0"



NOTE: CONTRACTOR SHALL ENSURE THAT ALL HARD CONNECTIONS, FOR ALL DIALYSIS WALL BOXES, ARE PROTECTED AND RECESSED WITHIN THE EXTERIOR PLANE OF THE HEADWALL.



4E CORNER GUARD (WP-01) DETAIL
6" = 1'-0"

3E CRASH RAIL BUMPER (WP-02)
6" = 1'-0"

CONSULTANTS:		ARCHITECT/ENGINEERS:		Drawing Title INTERIOR DETAILS		Project Title IMPROVE 5D DIALYSIS FUNCTIONAL DEFICIENCIES		Project Number 598-13-109		CENTRAL ARKANSAS VETERANS AFFAIRS HEALTHCARE SYSTEM	
				Approved: Project Director		Location 4300 WEST 7TH STREET LITTLE ROCK, AR 72205		Building Number JLM			
				Approver		Date 2014.10.31		Drawn NB		Checked ROW	
								Drawing Number AE501		Dwg. 35 of 89	
										Department of Veterans Affairs	