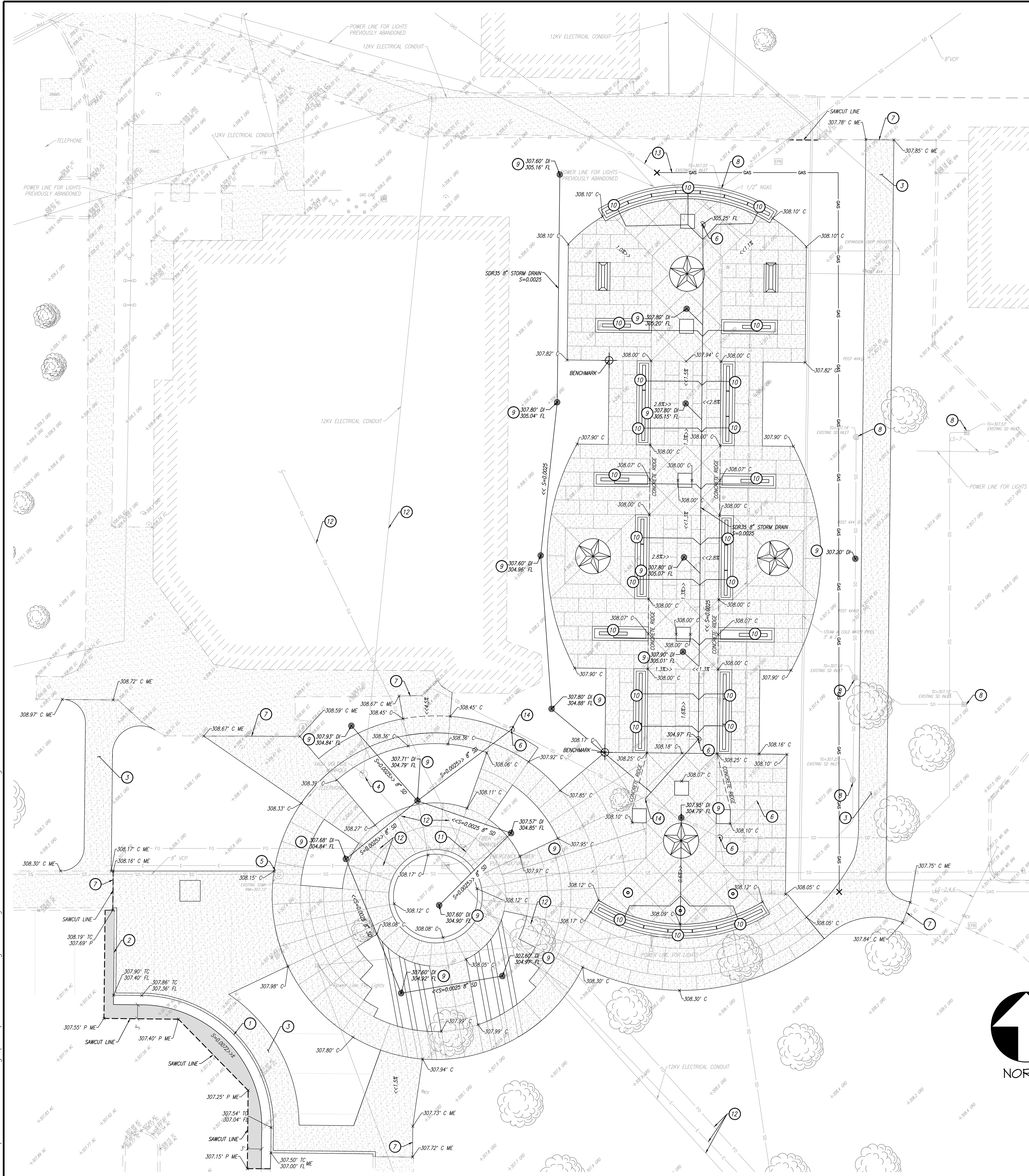


three inches = one foot
one and one half inches = one foot
one inch = one foot
three quarters inch = one foot
one half inch = one foot
three eighths inch = one foot
one quarter inch = one foot
one eighth inch = one foot



GRADING REQUIREMENTS:

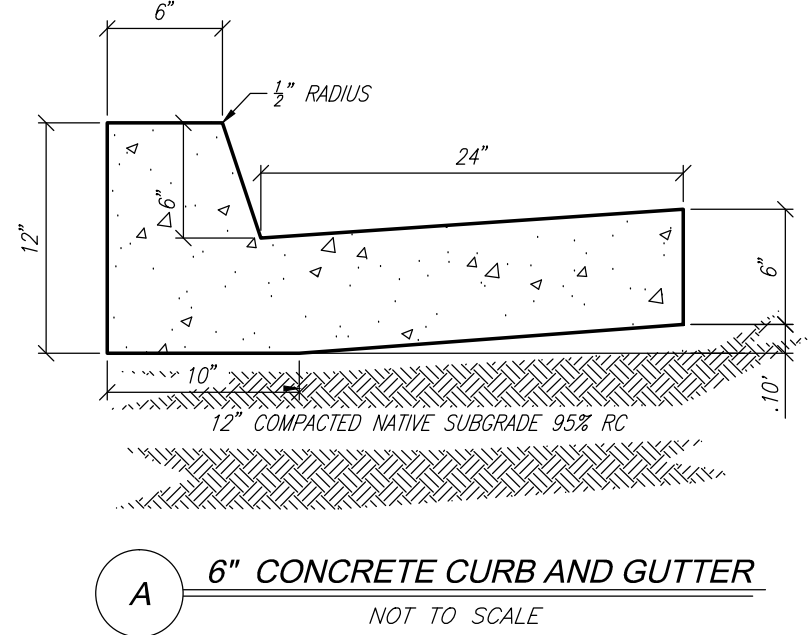
1. THE GRADING CONTRACTOR SHALL REMOVE ALL ORGANIC MATTER, DEBRIS, AND OTHER DELETERIOUS MATERIAL FROM THE SITE.
2. SUBGRADE TO BE COMPACTED TO 95% RELATIVE COMPACTION BASED ON ASTM D-1557-78. PROVIDE COMPACTION REPORTS PREPARED BY AN APPROVED TESTING AGENCY.
3. NO DRAINAGE SHALL BE PERMITTED ONTO ADJACENT PROPERTIES. (EXCEPT WHERE COVENANTS APPLY)
4. ANY SURVEY MONUMENTS WITHIN THE AREA OF WORK SHALL BE PRESERVED OR RESET BY A REGISTERED CIVIL ENGINEER OR A LICENSED LAND SURVEYOR.
5. THE CONTRACTOR SHALL MAKE ADEQUATE PROVISION FOR DUST CONTROL FOR THE DURATION OF THE WORK. DUST CONTROL MEASURES SHALL BE FULLY AND ADEQUATELY CARRIED OUT ON WEEKDAYS, WEEKENDS AND HOLIDAYS, AND WHEN NECESSARY, BEFORE OR AFTER NORMAL WORKING HOURS.
6. ALL GRADING SHALL COMPLY WITH 2012 IBC.
7. THE OVERALL BUILDING SITE SHALL HAVE A MINIMUM SLOPE OF 0.5%, IN ALL AREAS, TO AN APPROVED DRAINAGE FACILITY OR A PUBLIC STREET.
8. NO PERMANENT ON-SITE WATER RETENTION IS ALLOWED.
9. CONTRACTOR SHALL ADJUST EXISTING LIDS TO FINISHED GRADE ELEVATION.

KEYNOTES:

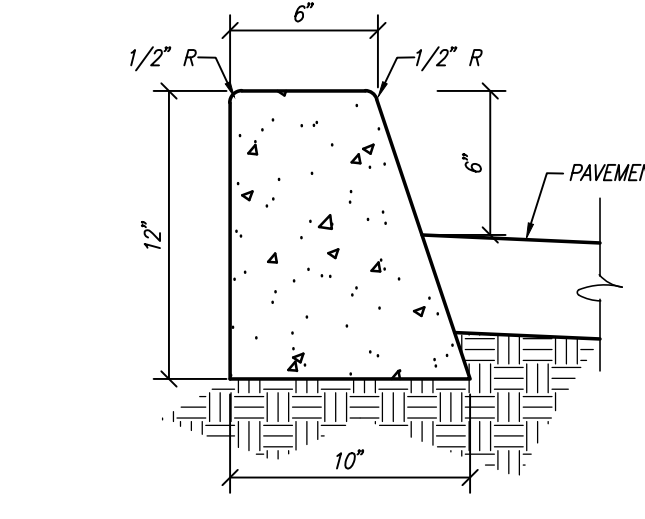
1. INSTALL 6" CONCRETE CURB & GUTTER PER DETAIL 'A' BELOW
2. INSTALL 6" CONCRETE CURB PER DETAIL 'B' BELOW
3. INSTALL 4" CONCRETE SIDEWALK PER DETAIL 'C' BELOW
4. EXISTING 12" R.V. MANHOLE TO BE ADJUSTED TO FINISHED SURFACE GRADE
5. EXISTING SANITARY SEWER MANHOLE TO BE ADJUSTED TO FINISHED SURFACE GRADE
6. INSTALL CLEAN OUT
7. MATCH EXISTING CONCRETE TO NEW CONCRETE PER DETAIL 'D' BELOW
8. EXISTING STORM DRAIN INLET TO REMAIN
9. INSTALL ATRIUM DRAIN
10. INSTALL PLACARD MONUMENT WALL DRAIN INLET PER ARCHITECTURAL DETAIL
11. EXISTING COMMUNICATION MANHOLE TO BE ADJUSTED TO FINISHED SURFACE GRADE
12. REFER TO ELECTRICAL SHEET E101 FOR 12KV POWER, COMMUNICATION, AND EMERGENCY POWER DEMO AND NEW WORK
13. ROUTE GAS OUTSIDE OF WALK OF HONOR PLAZA
14. CONNECT TO EXISTING STORM DRAIN LINE. CONTRACTOR TO CONFIRM SIZE GREATER OF AT LEAST 8" PIPE AND DEPTH SUFFICIENT FOR PROPOSED ADDITIONS.

LEGEND

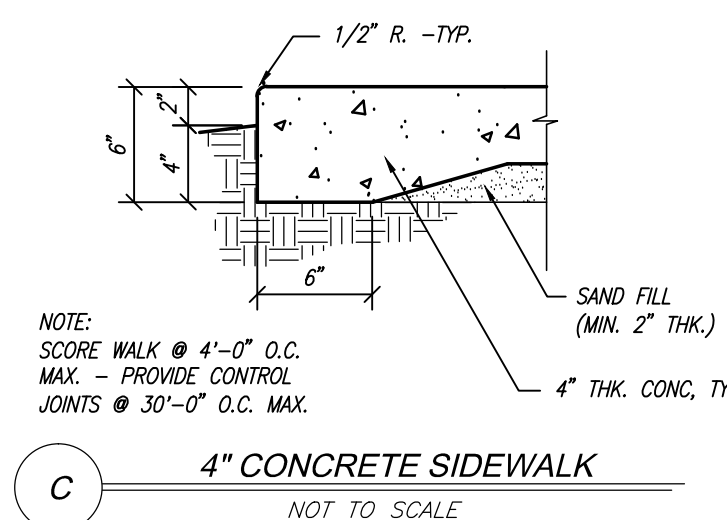
- PROPOSED CONCRETE
- PROPOSED DECORATIVE CONCRETE
- PROPOSED ASPHALT CONCRETE, SECTION TO MATCH EXISTING
- AC ASPHALT CONCRETE
- EC EDGE OF CONCRETE
- EPB ELECTRIC BULL BOX
- FL FLOWLINE
- EXISTING GROUND
- MS MONOTRIP
- SD STORM DRAIN
- SS SANITARY SEWER
- TC TOP OF CURB
- TD TOP OF DIRT
- TRANS ELECTRIC TRANSFORMER
- EXISTING VALVE
- EXISTING FDC
- EXISTING STORM DRAIN INLET
- EXISTING CLEAN-OUT
- EXISTING TELEPHONE MANHOLE
- EXISTING TREE (SIZE VARIES)
- EXISTING GAS METER
- EXISTING BOLLARD/POST
- EXISTING GAS MAIN (LOCATION APPROXIMATE)
- EXISTING STORM DRAIN LINE (LOCATION APPROXIMATE)
- EXISTING SANITARY SEWER LINE (LOCATION APPROXIMATE)
- PROPOSED STORM DRAIN INLET
- POINT OF CONNECTION



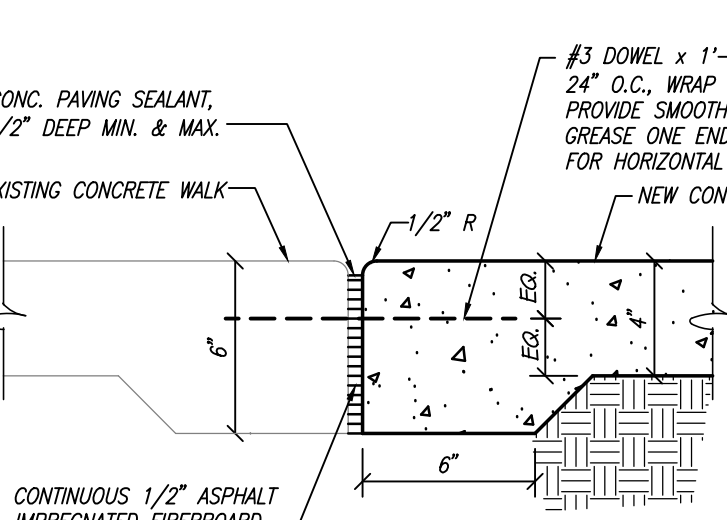
A 6" CONCRETE CURB AND GUTTER
NOT TO SCALE



B 6" CONCRETE CURB
NOT TO SCALE



C 4" CONCRETE SIDEWALK
NOT TO SCALE



D EX. CONCRETE TO NEW CONCRETE
NOT TO SCALE

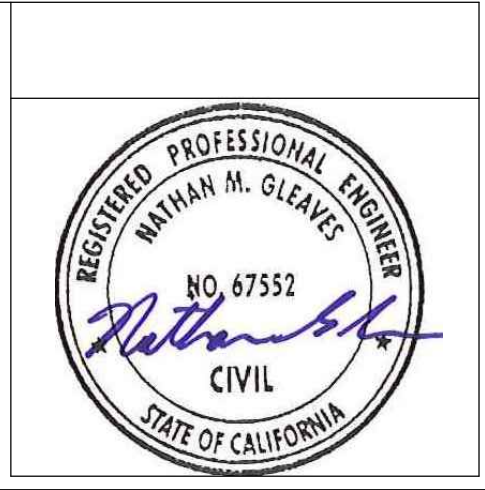


65% CD SUBMITTAL	10/24/14
100% NOT FOR CONSTRUCTION SUBMITTAL	12/23/14
100% NOT FOR CONSTRUCTION RE-SUBMITTAL	02/13/15
100% CD	03/19/15
Revisions	Date

CONSULTANTS:

PRECISION
CIVIL ENGINEERING, INC.

PLANNING • SURVEYING • CIVIL ENGINEERING
1234 O STREET, FRESNO, CALIFORNIA 93721
TEL: 559-449-4500 FAX: 559-449-4515
WWW.PRECISIONENG.NET



ARCHITECT/ENGINEERS:

TETER, LLP
7535 N. PALM AVE. 201 | FRESNO, CA 93711 | 559-437-8887
125 S. BRIDGE ST. 150 | VISALIA, CA 93291 | 559-425-5246
1200 DISCOVERY DR. 140 | BAKERSFIELD, CA 93309 | 661-843-8400
1130 K STREET 228 | SACRAMENTO, CA 95811 | 916-538-4242

ARCHITECTS ENGINEERS CONNECTED

Drawing Title	Project Title	Project Number	Office of Construction and Facilities Management Department of Veterans Affairs
GRADING PLAN	VA MONUMENT WALK OF HONOR	970-14-102	
Approved Project Director	Location FRESNO, CA	Building Number -	
	Date 03-19-15	Drawing Number C200	
	Checked	Drawn	Dwg. 3 of 21