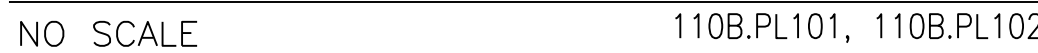


RP-1 IN-LINE CIRCULATOR PUMP - SEE EQUIPMENT LIST THIS SHEET

AFF	ABOVE FINISHED FLOOR
CW	COLD WATER
DN	DOWN
DEG. F	DEGREE FAHRENHEIT
DWV	DRAIN, WASTE AND VENT
EWC	ELECTRIC WATER COOLER
FD	FLOOR DRAIN
FF	FINISHED FLOOR
GPM	GALLONS PER MINUTE
HC	HANDICAP
HW	HOT WATER
HP	HORSE POWER
LBS/HR	POUNDS PER HOUR
OV	OVERFLOW ROOF DRAIN
PD	PRESSURE DROP
PH	PHASE
RD	ROOF DRAIN
RPM	REVOLUTIONS PER MINUTE
TEMP	TEMPERATURE
TYP	TYPICAL
V	VENT
VTR	VENT THROUGH ROOF
W	WASTE
WCO	WALL CLEANOUT
WH	WALL HYDRANT

1. PROVIDE MOLDED CLOSED CELL VINYL SEAMLESS PREWRAPPED ADJUSTABLE TRAPS, TAILPIECES AND ASSOCIATED APPURTENANCES FOR ALL HANDICAP ACCESSIBLE FIXTURES. BURNING CHARACTERISTICS SHALL BE LESS THAN 5 SECONDS. FUNGAL RESISTANCE SHALL BE IN ACCORDANCE WITH ASTM G-21 AND ASTM G-222.
2. COORDINATE ALL PLUMBING NEW AND DEMOLITION WORK WITH PHASING PLAN.
3. ALL ITEMS THAT REQUIRE ACCESS, SUCH AS FOR OPERATING, CLEANING, SERVICING, MAINTENANCE, AND CALIBRATION, SHALL BE EASILY AND SAFELY ACCESSIBLE BY PERSONS STANDING AT FLOOR LEVEL OR STANDING ON PERMANENT PLATFORMS WITHOUT THE USE OF PORTABLE LADDERS. EXAMPLES OF THESE ITEMS INCLUDE, BUT ARE NOT LIMITED TO: ALL TYPES OF VALVES, FILTERS AND STRAINERS, TRANSMITTERS, CONTROL VALVES, PRIOR TO COMMENCING INSTALLATION WORK, REFER ANY CONFLICTS BETWEEN THIS REQUIREMENT AND CONTRACT DRAWINGS TO THE COR FOR RESOLUTION.

PROVIDE 5 GPM INLINE CIRCULATOR PUMP AT 120V/1Ø, 50 FEET OF HEAD. CIRCULATOR PUMPS SHALL BE CONTROLLED BY A TIME CLOCK SET TO OPERATE FROM 0530 TO 1800 (ADJUSTABLE).



NO SCALE

NOTES:

1. PROVIDE STOPS.
2. PROVIDE TOP MOUNTED, CENTERSET FAUCET WITH FLOW RATE OF .5 GPM.
3. ALL FIXTURES INDICATED AS HANDICAP ACCESSIBLE (HC) SHALL COMPLY AND BE INSTALLED IN ACCORDANCE WITH THE LATEST EDITION OF CABO/ANSI A117-1.
4. LAVATORY SHALL BE INTEGRAL TO THE HEALTHCARE SYSTEM FURNITURE SYSTEM.

NOM. SIZE (INCHES)	MINIMUM SLOPE (INCH PER FOOT)
2 1/2" OR LESS	1/4
3 TO 6	1/8

[illegible]

ASSOCIATES, P.C.
Engineers • Surveyors • Planners
PortCentre Parkway, Suite 5
Norfolk, Virginia 23704

GH
CIA
ANTS | S

HUGHES
ASSOCIATES

ENGINEERS | CONSULTANTS | SCIENTISTS

4445 CORPORATION LANE | SUITE 211
VIRGINIA BEACH | VIRGINIA | 23462
P 757.213.6856 | F 757.687.0702
www.haifire.com



BOWMAN, FOSTER & ASSOC
CONSULTING ENGINEERS
6379 CENTER DR.
NORFOLK, VA 23502
2424 26th ROAD SOUTH
ARLINGTON, VA 22206

Drawing Title
PLUMBING LEGEND, ABBREVIATIONS, FIXTURE SCHEDULE AND DETAILS
Approved: Project Director

Project Title		
SECOND FLOOR ADDITION ON BUILDING 110B		
Location		
VA MEDICAL CENTER, HAMPTON, VA		
Date	Checked	Drawn
02-05-15	MED	RAO

Project Number
590-012

Building Number
110B

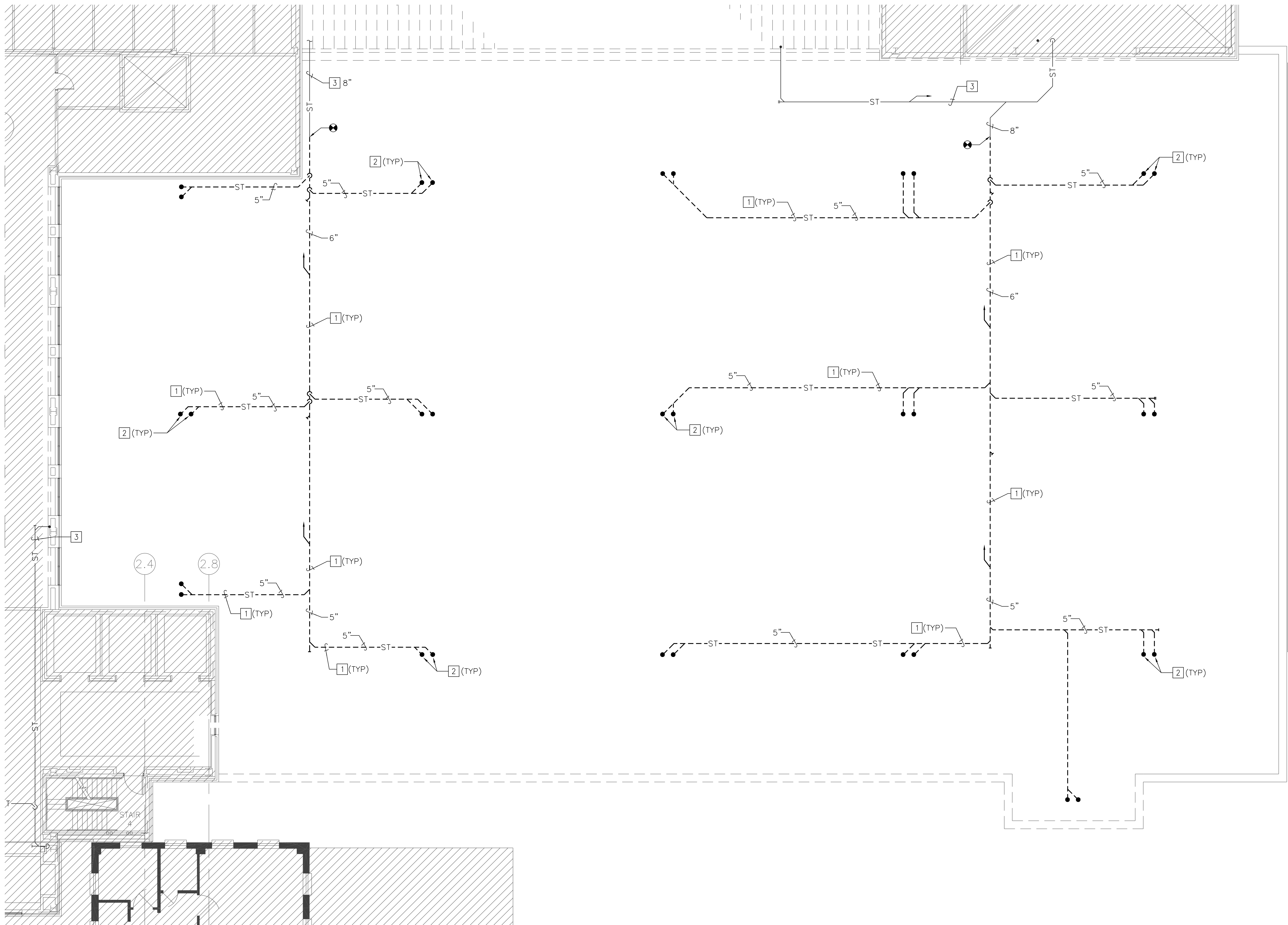
Drawing Number
110B.P-001

Dwg. 94 of 178



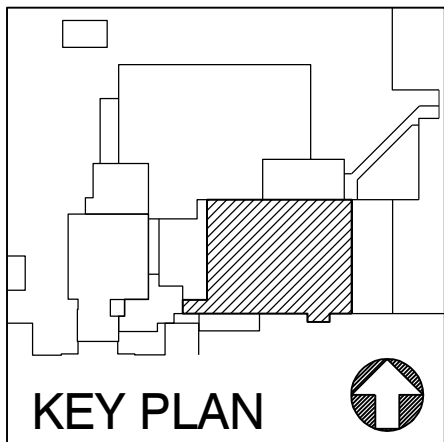
three inches = one foot
one inch = one foot
one and one half inches = one foot
one inch = one foot
three quarters inch = one foot
one half inch = one foot
three eighths inch = one foot
one quarter inch = one foot
one eighth inch = one foot

lwsley
2-18-15 01:57:36 PM
DEMOLITION.dwg
110B.PD101 PLUMBING ROOF PLAN - DEMOLITION

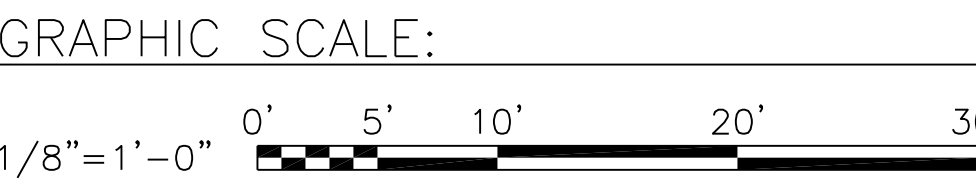


PLUMBING ROOF PLAN - DEMOLITION
SCALE: 1/8" = 1'-0"

- GENERAL NOTE (THIS SHEET ONLY)**
1. NEW ROOF DRAINS SHALL BE CONNECTED TO EXISTING DRAINS.
- DEMOLITION NOTES (THIS SHEET ONLY)**
- 1 REMOVE RAIN LEADERS, HANGERS AND ASSOCIATED APPURTENANCES COMPLETE TO POINT INDICATED.
- 2 REMOVE ROOF DRAIN. PATCH PENETRATION. SEE ARCHITECTURAL PLANS.
- 3 EXISTING RAIN LEADER PIPING TO REMAIN.



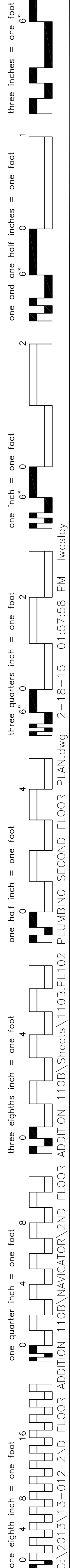
NOTE: IF THIS DRAWING IS A REDUCTION, GRAPHIC SCALE MUST BE USED.



FULLY SPRINKLERED

Revisions:		CONSULTANTS:		ARCHITECT/ENGINEERS:		Drawing Title		Project Title		Project Number	
		McPHERSON DESIGN GROUP p.c. STRUCTURAL ENGINEERS 4371 Center Drive, Suite 100 Norfolk, Virginia 23503-4102 Phone: (757) 945-2500 Fax: (757) 945-2501 www.McPhersonDesignGroup.com		HUGHES ASSOCIATES ENGINEERS CONSULTANTS SCIENTISTS 4445 CORPORATION LANE SUITE 211 VIRGINIA BEACH VIRGINIA 23462 P 757.213.6856 F 757.687.0702 www.haifire.com		PLUMBING ROOF PLAN - DEMOLITION		SECOND FLOOR ADDITION ON BUILDING 110B		590-012	
Date		ANDRE MARQUEZ ARCHITECTS 5510 UNIVERSITY BLVD SUITE 200 PORTSMOUTH, VIRGINIA 23704 P 757.213.6856 F 757.687.0702 www.andremarquizarchitects.com		JBH BOWMAN, FOSTER & ASSOC. CONSULTING ENGINEERS 6379 CENTER DR. NORFOLK, VA 23502 2424 26th ROAD SOUTH ARLINGTON, VA 22206		Approved Project Director		Location		Building Number	
								VA MEDICAL CENTER, HAMPTON, VA		110B	
								Date		Drawing Number	
								02-05-15		110B.PD101	
								Checked		Dwg. 95 of 178	
								MED			
								RAO			





one eighth inch = one foot

1	2	3	4	5	6	7	8	9
---	---	---	---	---	---	---	---	---


A
B
C
D
E
F

- KEY PLAN

GRAPHIC SCALE:

1/8" = 1'-0"

0' 5' 10' 20' 30'



Dwg. 97 of 174

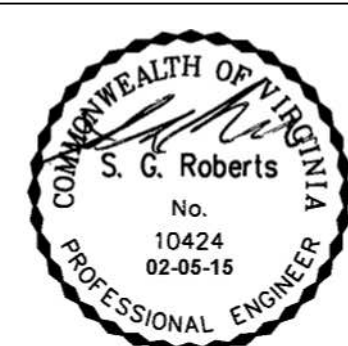
 Department of
Veterans Affairs

ARCH
ANDRE MARQUEZ
ARCHITECTS

**HOGGARD-EURE
ASSOCIATES, P.C.**
Engineers • Surveyors • Planners

901 PortCentre Parkway, Suite 5
Portsmouth, Virginia 23704

**McPHERSON
DESIGN
GROUP p.c.**
STRUCTURAL ENGINEERS
1101 Center Drive, Suite 100
Norfolk, Virginia 23502-4102
Phone (757) 965-2000
Facsimile (757) 965-2001
www.McPherSONDesignGroup.com



JBH

Approved: Project Director

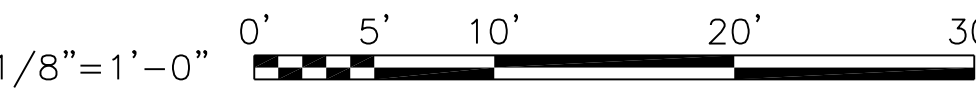
Location VA MEDICAL CENTER, HAMPTON, VA		
Date 02-05-15	Checked MED	Drawn RAO

Project Number	590-012
	Building Number
Drawing Number	110B.PL10
	Dwg. 97 of 170

- 1 PROVIDE STUB-UP FOR DOMESTIC PIPING FOR FUTURE. PIPING SHALL BE DRAINABLE FOR FREEZE PROTECTION.
- 2 SANITARY PIPING FOR THIRD FLOOR STUB SHALL BE CAPPED IN SECOND FLOOR INTERSTITIAL SPACE.

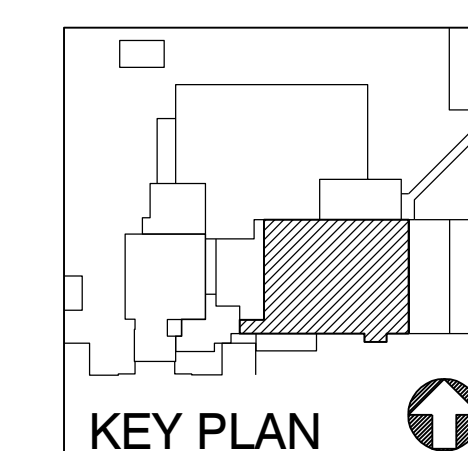


GRAPHIC SCALE: _____



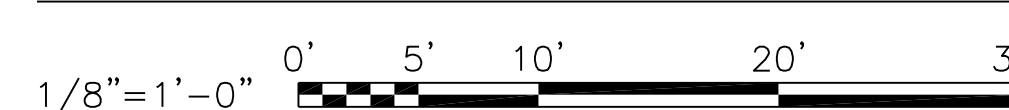
FULLY SPRINKLERED

[illegible]



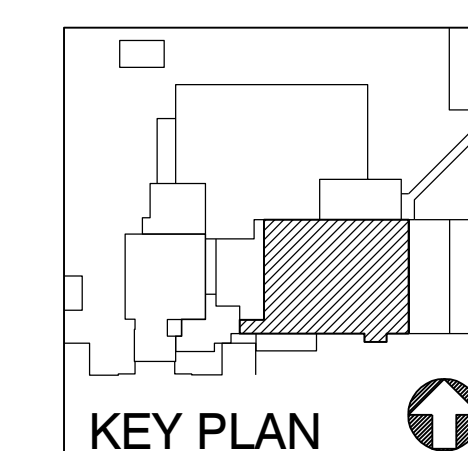
NOTE: IF THIS DRAWING IS A REDUCTION,
GRAPHIC SCALE MUST BE USED.

GRAPHIC SCALE:



FULLY SPRINKLERED


[illegible]



NOTE: IF THIS DRAWING IS A REDUCTION,
GRAPHIC SCALE MUST BE USED.

GRAPHIC SCALE:

1/8"=1'-0"



A horizontal graphic scale bar with alternating black and white segments. It is marked with the following values: 0', 5', 10', 20', and 30'.

FULLY SPRINKLERED

[illegible]

- 1 ISOLATION VALVES FOR DOMESTIC HOT AND COLD WATER FOR THE THIRD FLOOR.
- 2 DOMESTIC COLD WATER, HOT WATER AND HOT WATER RETURN PIPING UP FROM FIRST FLOOR INTERSTITIAL SPACE.
- 3 OUTLINE OF IT ROOM. NO PLUMBING PIPING SHALL ENTER THIS SPACE.
- 4 COORDINATE PIPING PENETRATION LOCATIONS WITH DOOR FOR IT ROOM.
- 5 PIPING UP TO THIRD FLOOR.

[illegible]

 **ANDRE MARQUET ARCHITECTS**
400 UNIVERSITY DRIVE, SUITE 200
PORTSMOUTH, VIRGINIA 23704
TEL: 757/233-1100
FAX: 757/233-1101
WWW.AMARCHITECTS.COM

 **HOGGARD-EURE ASSOCIATES, P.C.**
Engineers • Surveyors • Planners
901 PortCentre Parkway, Suite 5
Portsmouth, Virginia 23704

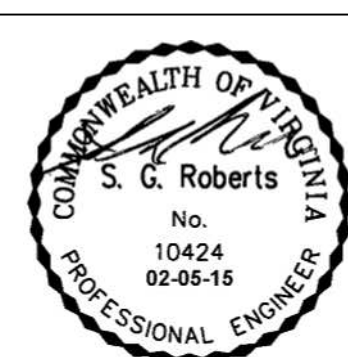
**McPHERSON
DESIGN
GROUP p.c.**
STRUCTURAL ENGINEERS
6371 Center Drive, Suite 100
Norfolk, Virginia 23502-4102
Phone (757) 965-2000
Facsimile (757) 965-2001
www.McPhersonDesignGroup.com



HUGHES
ASSOCIATES

ENGINEERS | CONSULTANTS | SCIENTISTS

4445 CORPORATION LANE | SUITE 211
VIRGINIA BEACH | VIRGINIA | 23462
P 757.213.6856 | F 757.687.0702
www.haifire.com



Approved: Project Director

Location			D
VA MEDICAL CENTER, HAMPTON, VA			
Date	Checked	Drawn	
02-05-15	MED	RAO	

Project Number
590-012

Building Number
110B

Drawing Number
110B.PL107

Dwg. 102 of 178

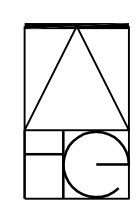


1. WASTE PIPING SHALL BE LOCATED IN FIRST FLOOR INTERSTITIAL SPACE.

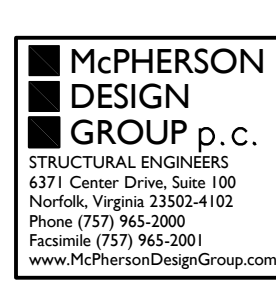


NO SCALE

CONSULTANTS:



HOGGARD—EURE
ASSOCIATES, P.C.
Engineers • Surveyors • Planners
PortCentre Parkway, Suite 5
Smyth, Virginia 23704



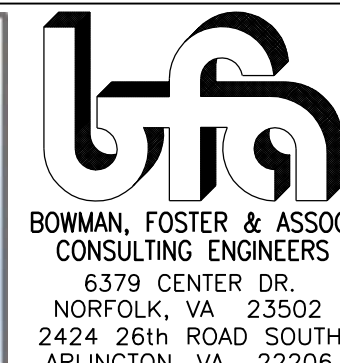
HUGHES
ASSOCIATES

ENGINEERS | CONSULTANTS | SCIENTISTS

4445 CORPORATION LANE | SUITE 211
VIRGINIA BEACH | VIRGINIA | 23462
P 757.213.6856 | F 757.687.0702
www.haifire.com



JBH



PLUMBING DWV RISER DIAGRAM

Approved: Project Director

SECOND FLOOR ADDITION ON
BUILDING 110B

Date

Checked	
---------	--

Drawn	
-------	--

Project Number	590-012
Building Number	110B

Drawing Number
110B.PL301



