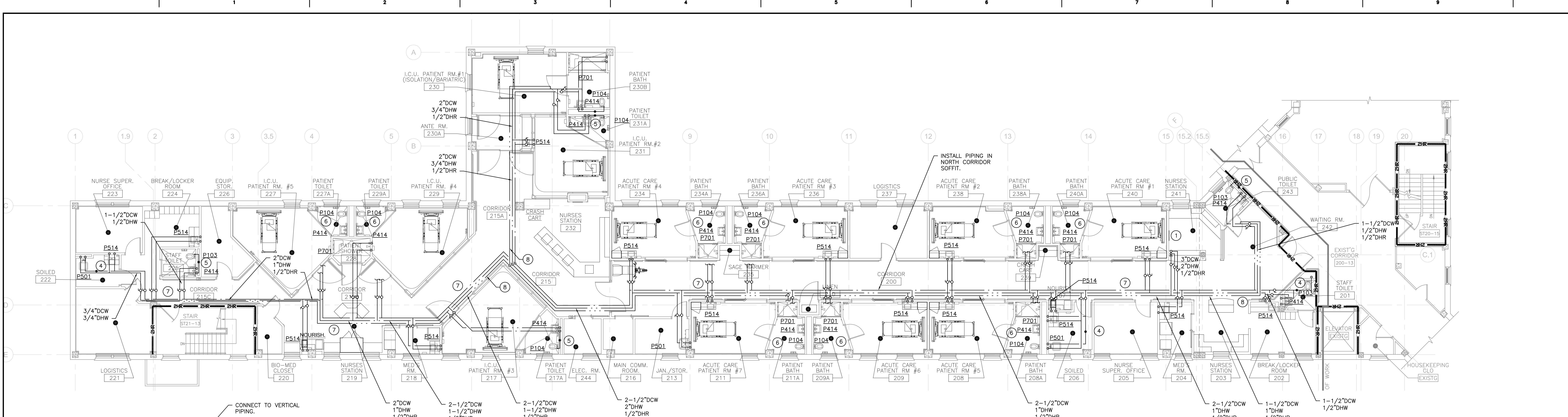
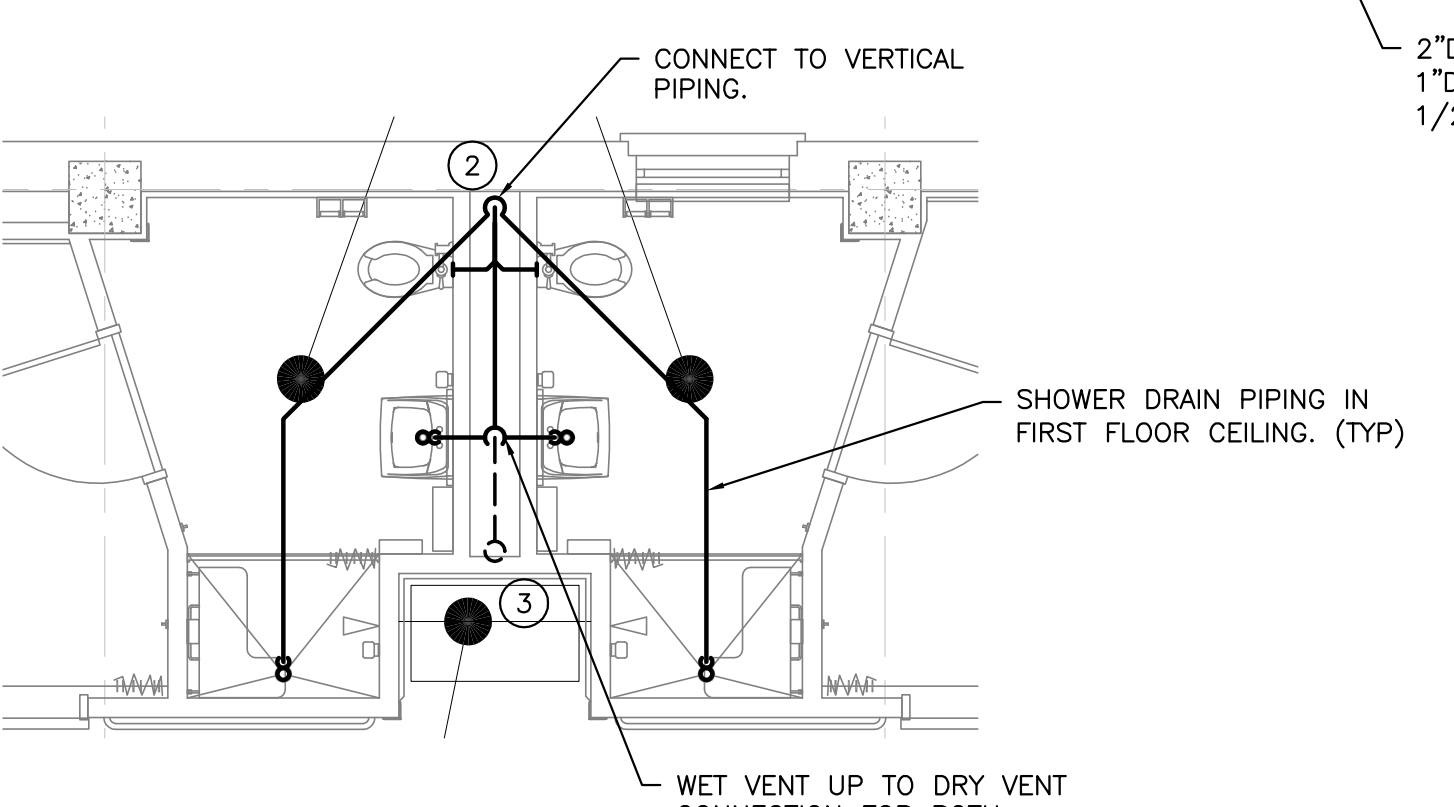


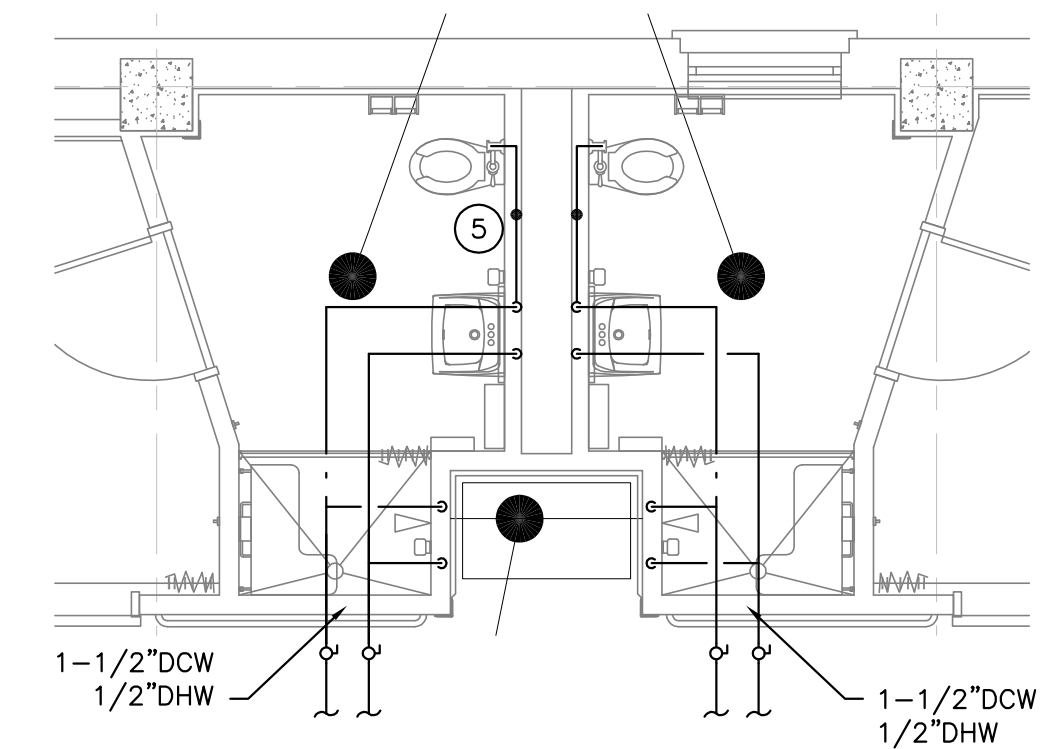
three inches = one foot
one and one-half inches = one foot
one inch = one foot
three-quarters inch = one foot
one-half inch = one foot
three-eighths inch = one foot
one-quarter inch = one foot
one-eighth inch = one foot



PLUMBING - SECOND FLOOR PLAN - WATER PIPING
SCALE: 1/8" = 1'-0"

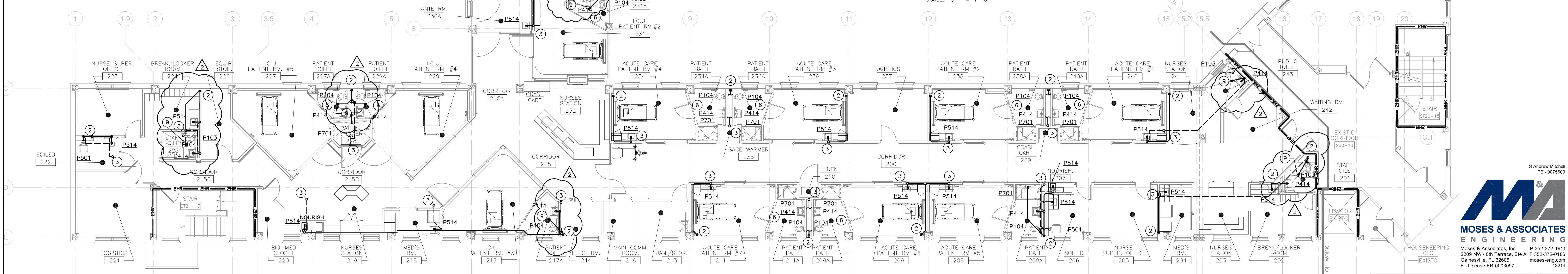


TYPICAL PATIENT BATHROOM SANITARY WASTE AND VENT PIPING PLAN
SCALE: 1/4" = 1'-0"



TYPICAL PATIENT BATHROOM WATER PIPING PLAN
SCALE: 1/4" = 1'-0"

- SHEET NOTES**
- DHW FROM ABOVE, DCW & DHR FROM BELOW. PROVIDE FLOOR ISOLATION VALVES.
 - SAN IN WALL CAVITY OF SECOND FLOOR, DOWN THROUGH FIRST FLOOR, TO CRAWL SPACE FOR CONNECTION TO EXISTING MAIN BUILDING SANITARY DRAIN.
 - VENT UP TO ATTIC.
 - INSTALL WHA ABOVE CEILING.
 - INSTALL WHA IN WALL. PROVIDE ACCESS PANEL. WHERE WHA'S ARE BACK TO BACK, PROVIDE ACCESS TO BOTH WITH A SINGLE ACCESS PANEL.
 - SEE TYPICAL FLOOR PATIENT BATHROOM PLAN ON THIS SHEET.
 - ROUTE ALL PIPING AS TIGHT TO STRUCTURE AS POSSIBLE WHILE MAINTAINING REQUIRED ACCESS.
 - INSTALL CIRCUIT SETTER IN DHR PIPING. PROVIDE METAL TAG READING "DHR 0.5 GPM". SET CIRCUIT SETTER FOR 0.5 GPM.
 - INSTALL 4" FD. PROVIDE TRAP PRIMER CONNECTED TO NEAREST DCW PIPE. PROVIDE ACCESS PANEL FOR TRAP PRIMER MAINTENANCE.



PLUMBING - SECOND FLOOR PLAN - SANITARY WASTE AND VENT
SCALE: 1/8" = 1'-0"

PLUMBING GENERAL NOTES

- VENT PIPING SERVING FIRST FLOOR, ROUTED THROUGH THE SECOND FLOOR IS EXISTING TO REMAIN. WHERE NEW FLOOR PLAN DOES NOT CONCEAL EXISTING PIPING, OFFSET IN FIRST FLOOR CEILING TO NEW VERTICAL LOCATION AS NECESSARY FOR CONCEALMENT. PROVIDE TEMPORARY VENT CONNECTION FOR ALL FIRST FLOOR FIXTURES TO EXISTING VTR'S DURING ENTIRE CONSTRUCTION PERIOD.
- DHR PIPING SERVING FIRST FLOOR, ROUTED THROUGH THE SECOND FLOOR IS EXISTING TO REMAIN. WHERE NEW FLOOR PLAN DOES NOT CONCEAL EXISTING PIPING, OFFSET IN FIRST FLOOR CEILING TO NEW VERTICAL LOCATION AS NECESSARY FOR CONCEALMENT.

CONSTRUCTION DOCUMENTS - 100% SUBMISSION

ADENDUM 03/19/15	ARCHITECT AND CONSULTANTS: DEANE + STROLLO, LLC 718 Virginia Drive Orlando, FL 32803 T: (407) 423-5355 F: (407) 422-5994	MOSES & ASSOCIATES 2209 NW 40th Ter. Ste. A Gainesville, FL 32605 T: (352) 372-1911 F: (352) 372-0186	DEPARTMENT OF VETERAN AFFAIRS ENGINEERING SERVICE ENGINEERING PLANNING AND ANALYSIS	Approved: Engineering Asst. Chief Engineering Maint. And Oper. Engineering Equipment Manager Engineering Health & Safety Engineering Planning & Analysis C.O.R.	Drawing Title SECOND FLOOR PLANS - PLUMBING - WATER AND SANITARY Approved: Chief, Engineering Service Approved: Service Director	Project Title RENOVATE 13B FOR ACUTE CARE AND INTENSIVE CARE UNIT Building Number 13B Location 1826 VETERANS BLVD. - DUBLIN, GA 31021	Date JANUARY 30, 2015 Project No. 557-14-105 DRAWING NO. P-1.2 Dwg. of 60	KEY PLAN N.T.S. Engineering Service Department of Veterans Affairs
---------------------	---	--	---	---	--	---	--	---