

Filename: N:\13214\VA Dublin Building 13B\Constructors\PLUMB\13214-PLUMB\FRE - Plot Date: 20 March 2015 - Plotted By: Beth Huffman

1
three inches = one foot

2
one and one-half inches = one foot

3
one inch = one foot

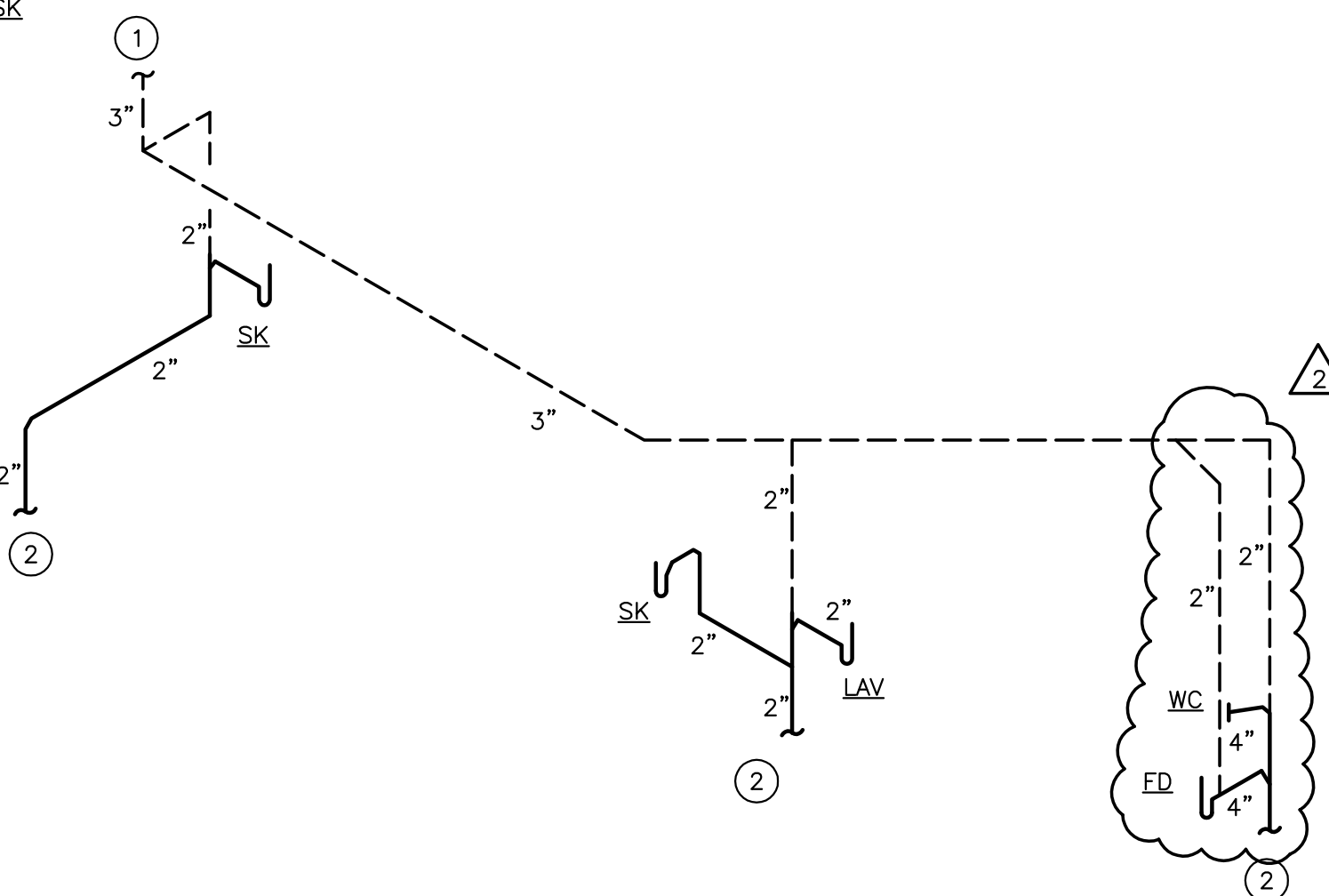
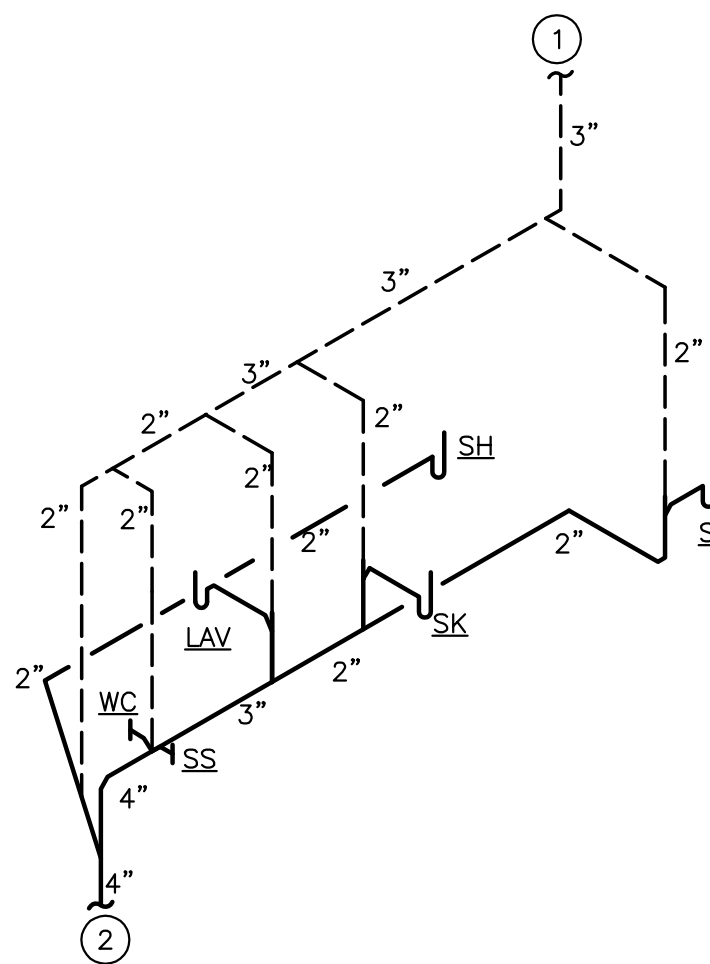
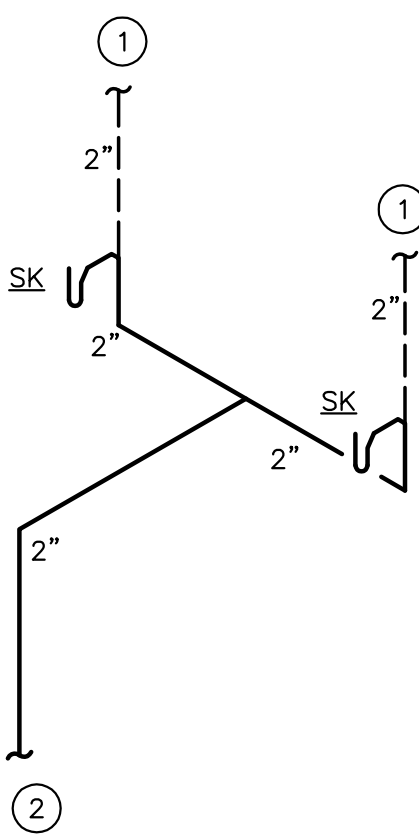
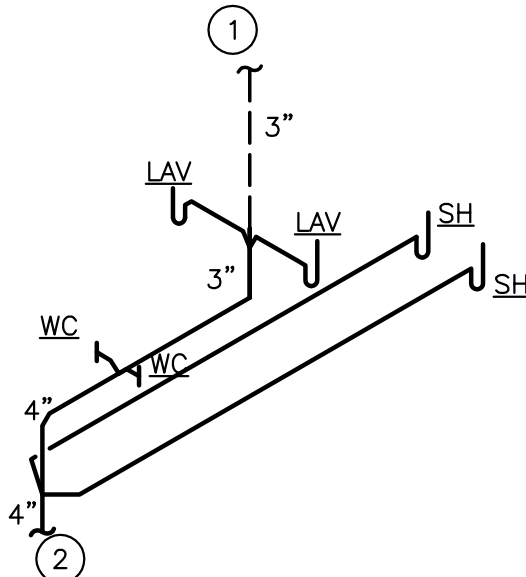
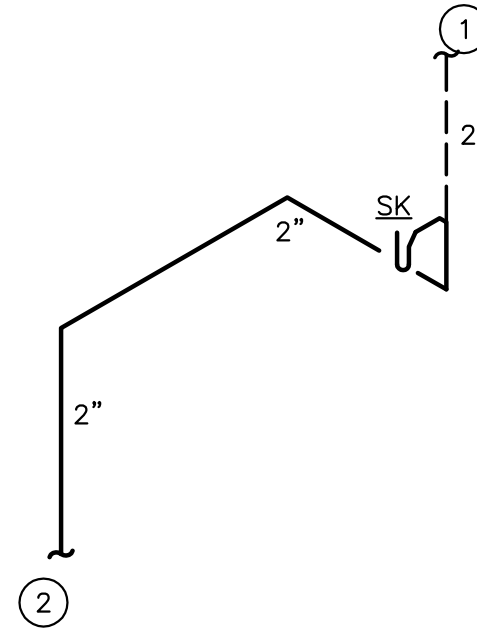
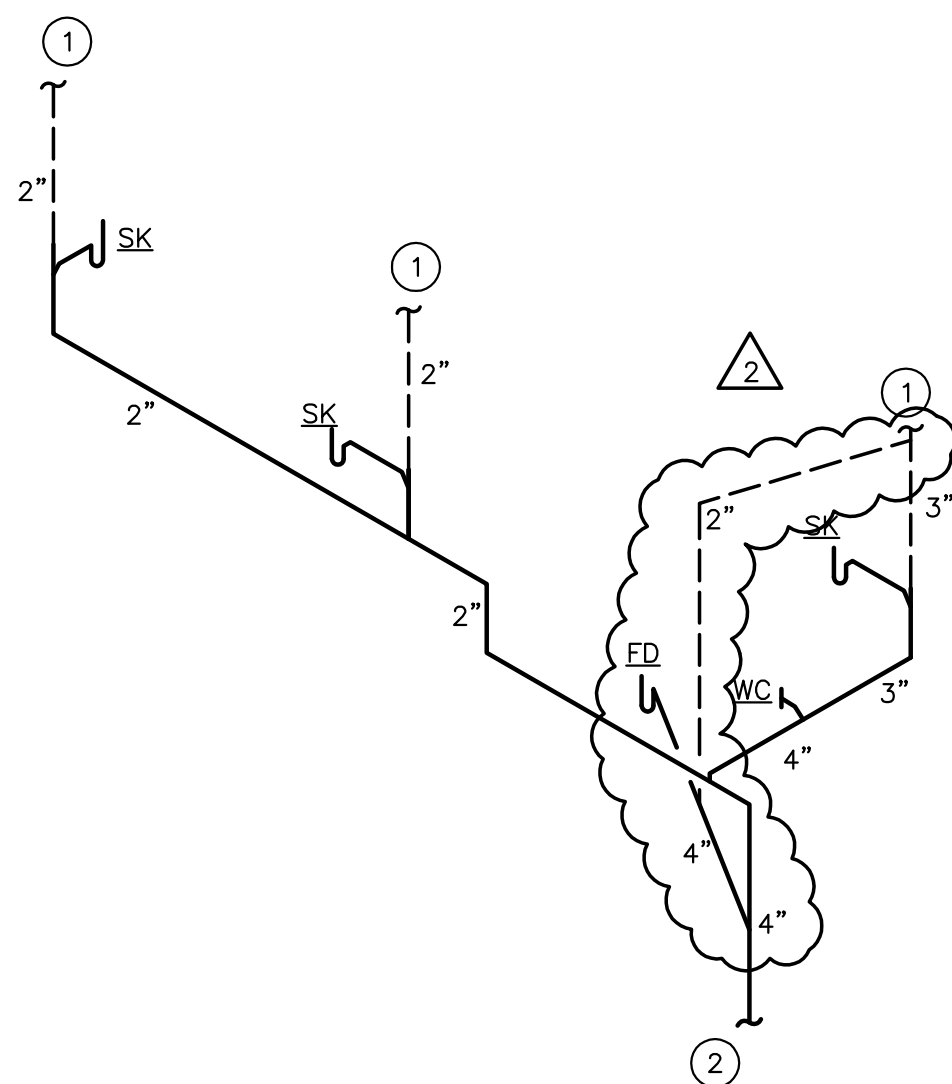
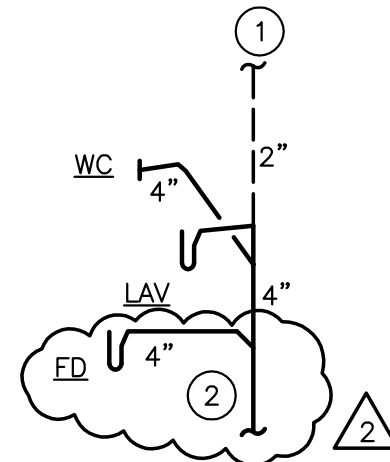
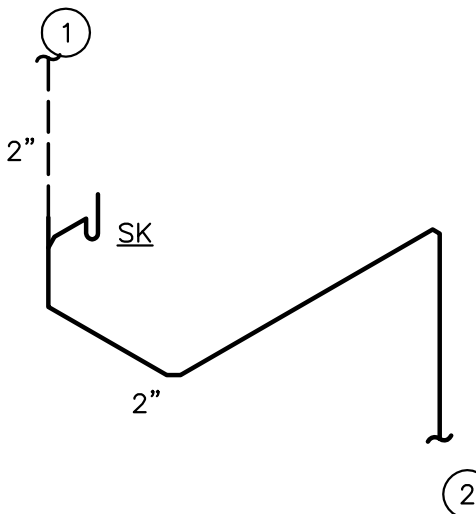
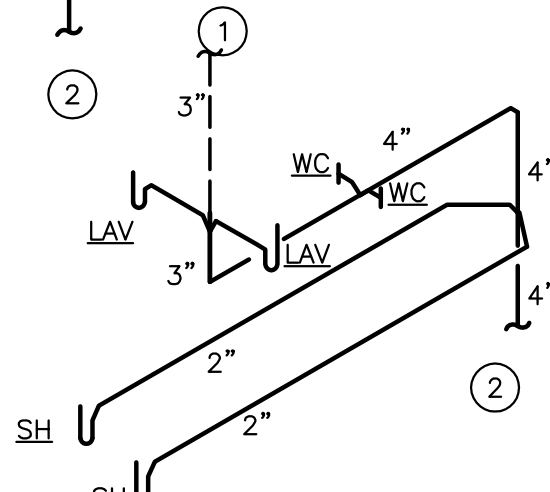
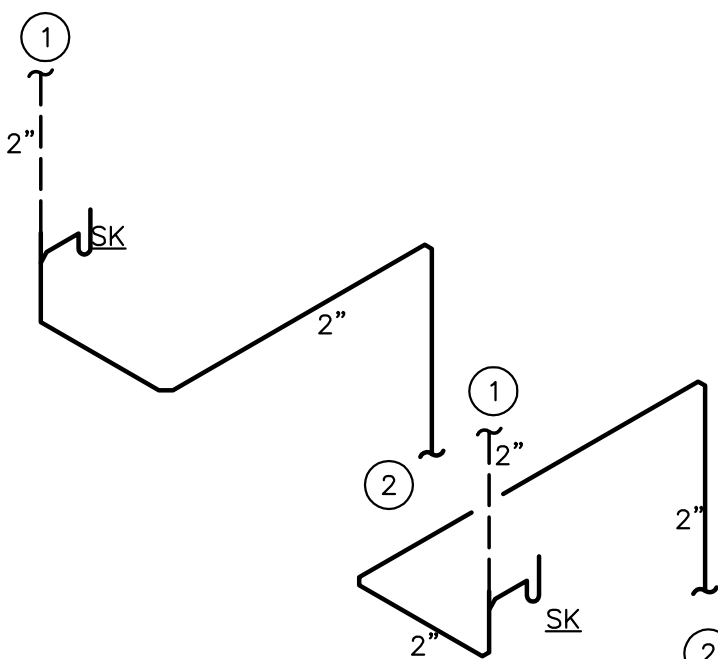
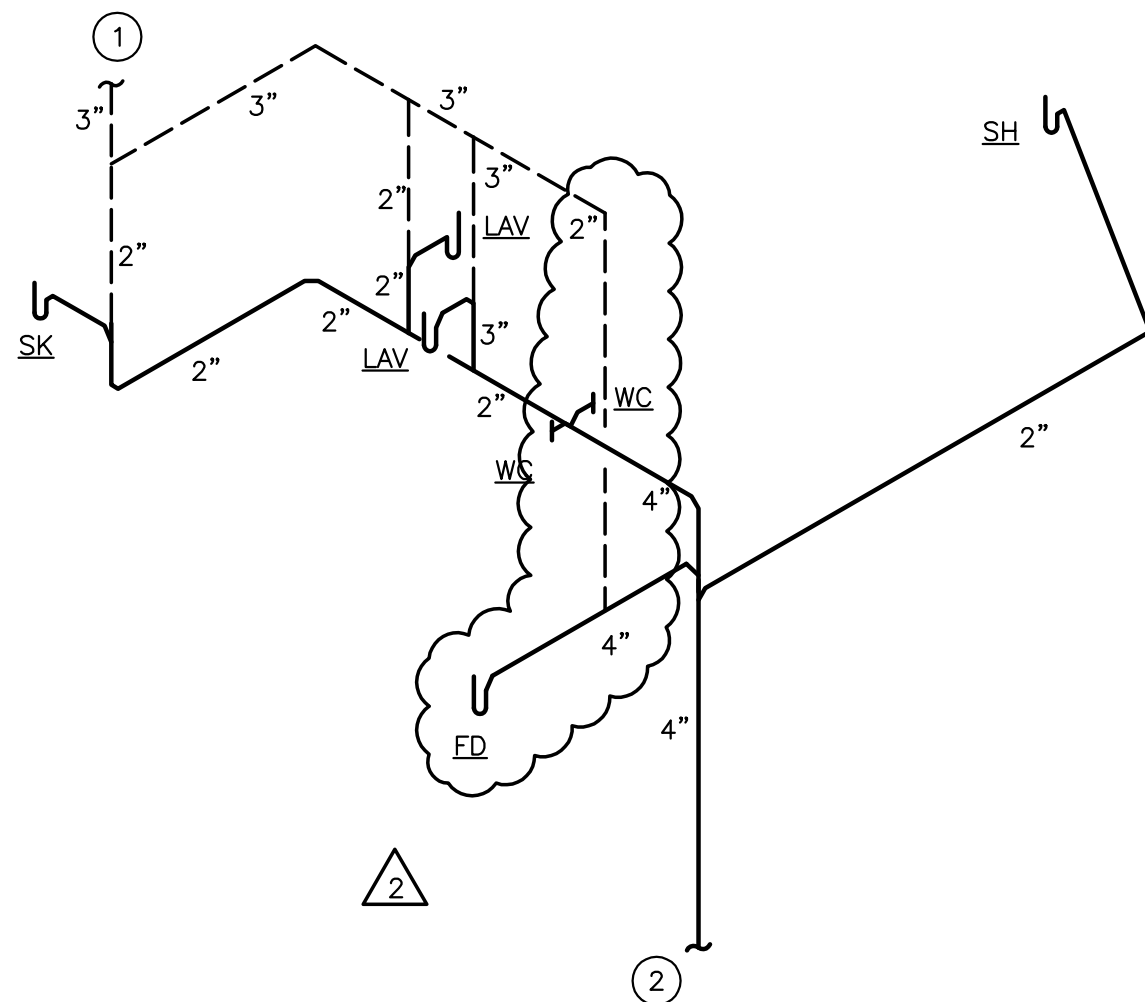
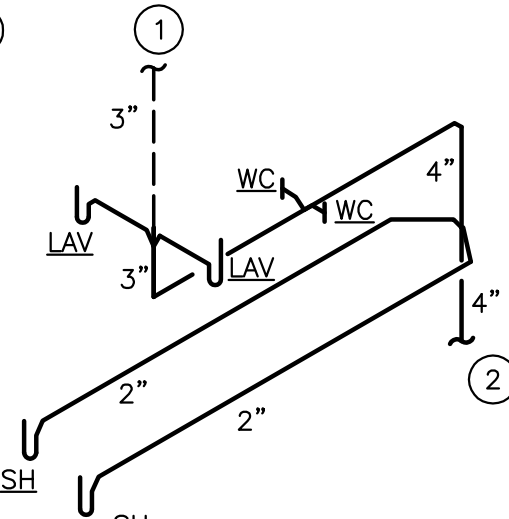
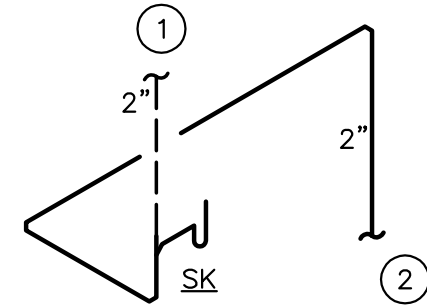
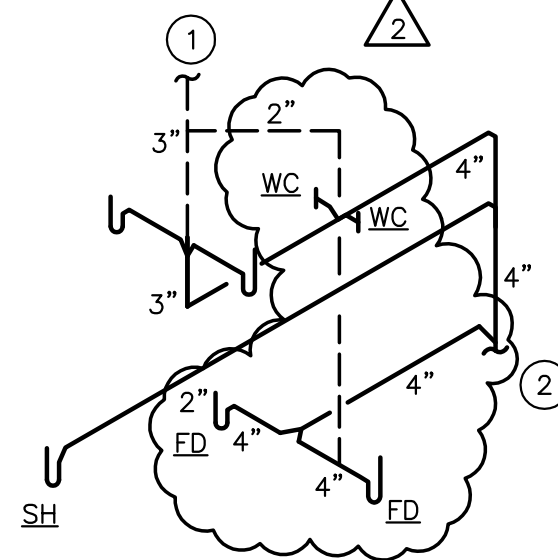
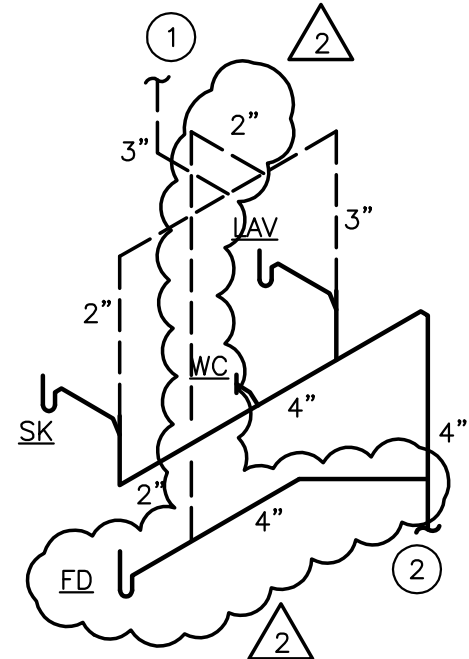
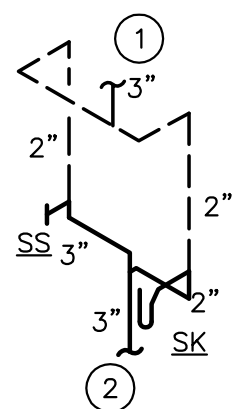
4
three-quarters inch = one foot

5
one-half inch = one foot

6
three-eighths inch = one foot

7
one-quarter inch = one foot

8
one-eighth inch = one foot



- SHEET NOTES**
- 1 VENT UP. SEE ATTIC PLAN FOR CONTINUATION TO VTR.
 - 2 SANITARY OR WASTE DOWN. SEE FIRST FLOOR PLAN FOR OFFSETS AND CONTINUATION TO MAIN IN CRAWL SPACE.

PLUMBING - SANITARY WASTE AND VENT RISER DIAGRAM
NOT TO SCALE

CONSTRUCTION DOCUMENTS - 100% SUBMISSION

Revisions	Date

ARCHITECT AND CONSULTANTS:	
DEANE + STROLLO, LLC	MOSES & ASSOCIATES
718 Virginia Drive Orlando, FL 32803 T: (407) 423-5355 F: (407) 422-5994	2209 NW 40th Ter, Ste. A Gainesville, FL 32605 T: (352) 372-1911 F: (352) 372-0186

DEPARTMENT OF VETERAN AFFAIRS ENGINEERING SERVICE ENGINEERING PLANNING AND ANALYSIS	
Approved:	
Engineering Asst. Chief	
Engineering Maint. And Oper.	
Engineering Equipment Manager	
Engineering Health & Safety	
Engineering Planning & Analysis	
C.O.R.	

Drawing Title	PLUMBING - SANITARY WASTE AND VENT RISER DIAGRAM	
Approved: Chief, Engineering Service	-	
Approved: Service Director	-	

Project Title	RENOVATE 13B FOR ACUTE CARE AND INTENSIVE CARE UNIT	
Building Number	13B	Checked AM Drawn AM
Location	1826 VETERANS BLVD. - DUBLIN, GA 31021	

Date	JANUARY 30, 2015
Project No.	557-14-105
DRAWING NO.	P-21
Dwg. - of 60	

KEY PLAN
N.T.S.

**MOSES & ASSOCIATES
ENGINEERING**
Moses & Associates, Inc. P 352-372-1911
2209 NW 40th Terrace, Ste A F 352-372-0186
Gainesville, FL 32605 mooses-eng.com
FL License EB-0003097 13214

**Department of
Veterans Affairs**