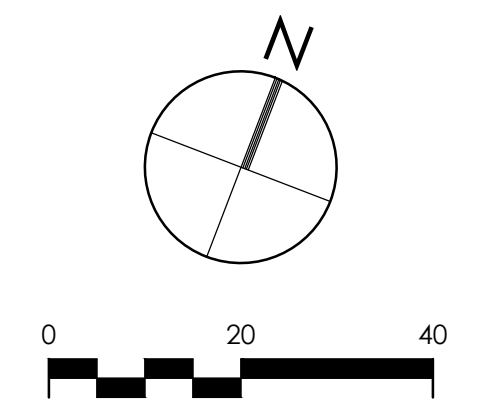
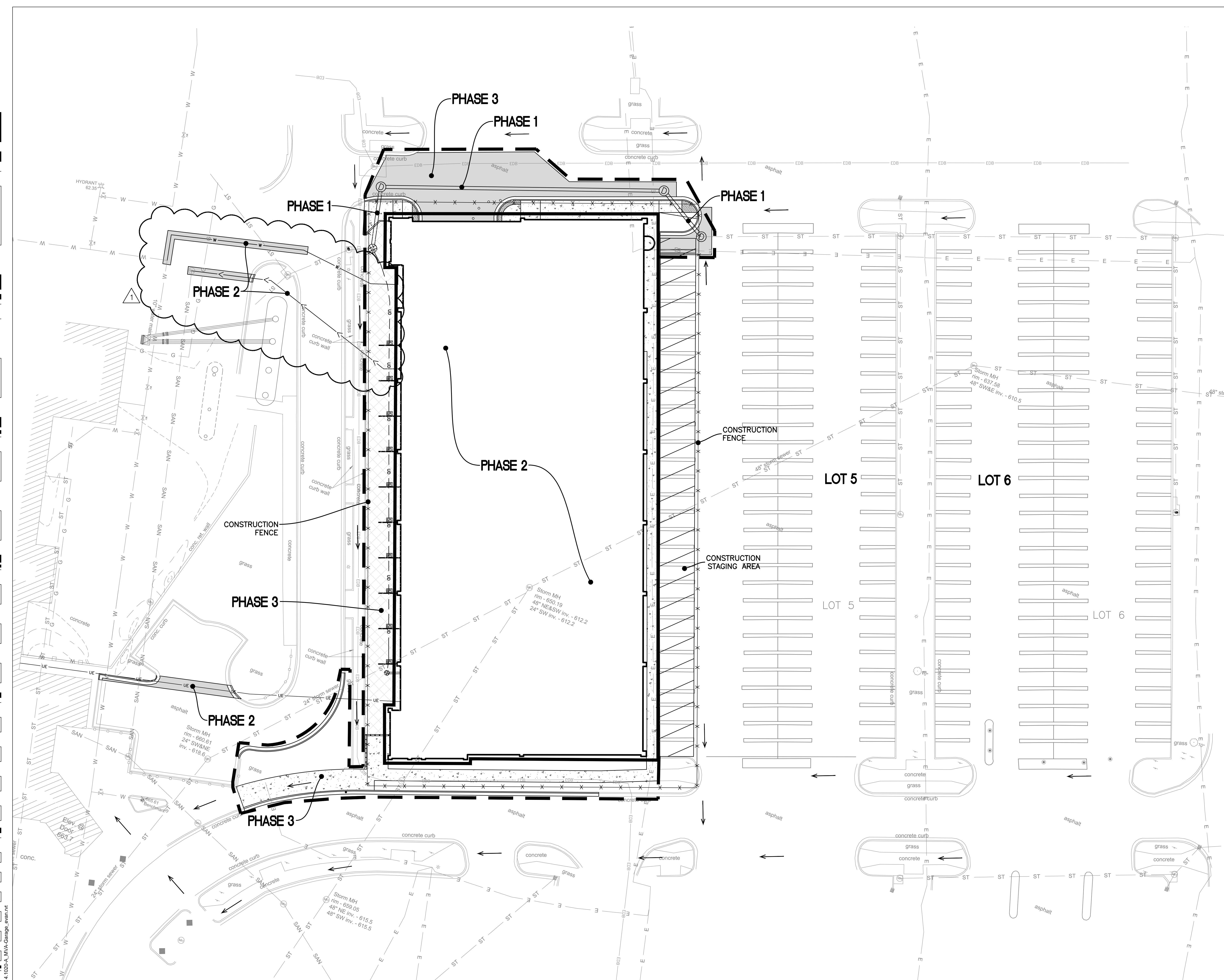


three inches = one foot
one and one half inches = one foot
one inch = one foot
three quarters inch = one foot
one half inch = one foot
three eighths inch = one foot
one quarter inch = one foot
one eighth inch = one foot



PHASING PLAN LEGEND

PHASE 1 RELOCATE STORM SEWER

PHASE 2

PHASE 3

CONSTRUCTION FENCE x x x x x

PEDESTRIAN FLOW DURING CONSTRUCTION ← ←

PHASING PLAN NOTES

PHASE 1:
INSTALL ALL EROSION CONTROL, CONSTRUCTION FENCE, AND CONSTRUCTION STAGING MEASURES AND OBTAIN APPROVAL FROM COR. RELOCATE EXISTING STORM SEWER AND INSTALL INLET PROTECTION ON NEW INLETS. THIS PHASE INCLUDES WORK ASSOCIATED WITH REPAIRING UTILITY TRENCHES. CONTRACTOR TO INSTALL TRAFFIC CONTROL DEVICES PER THE MANUAL ON UNIFORM TRAFFIC CONTROL DEVICES (MUTCD), LATEST EDITION, AS NECESSARY TO CONTROL VEHICULAR AND PEDESTRIAN TRAFFIC.

PHASE 2:
PREPARE SITE FOR GARAGE CONSTRUCTION BY DEMOLISHING CURB, SIDEWALKS, PAVEMENT, UTILITIES, AND ASSOCIATED SITE FEATURES. STABILIZE SITE FOR CONSTRUCTION, CONSTRUCT GARAGE AND ASSOCIATED UTILITY SERVICES. CONDUCT DEMOLITION AND CONSTRUCTION ACTIVITIES IN SUCH A MANNER TO PROVIDE MINIMUM TRAFFIC & PEDESTRIAN DISRUPTIONS. UPDATE TRAFFIC CONTROL DEVICES PER THE MUTCD, LATEST EDITION, AS NECESSARY TO CONTROL VEHICULAR AND PEDESTRIAN TRAFFIC.

PHASE 3:
COMPLETE SITE WORK ASSOCIATED WITH GARAGE, INCLUDING SIDEWALK, CURB, LANDSCAPING, SIGNAGE, AND BIORETENTION AREA. PROTECT BIORETENTION AREA ONCE INSTALLED AND MINIMIZE DISTURBANCE TO PREVENT COMPACTION OF ENGINEERED SOIL DURING CONSTRUCTION ACTIVITIES. DEMOBILIZE CONSTRUCTION EQUIPMENT, REMOVE EROSION CONTROL MEASURES, AND CLEAN SITE.

<p>AMENDMENT 1 Revisions:</p>		<p>VA U.S. Department of Veterans Affairs VAMC MILWAUKEE 5000 W. National Ave. Milwaukee, WI 53295</p>	<p>U.S. DEPARTMENT OF VETERANS AFFAIRS</p>	<p>ARCHITECT/ENGINEERS: PROJECT LEAD Architect, Structural Engineer, Civil Engineer GUIDON DESIGN 905 N. CAPITOL AVE. SUITE 100, INDIANAPOLIS, IN 46204 317.660.6388 WWW.GUIDONDESIGN.COM SUSTAINABLE ARCHITECTURE + ENGINEERING</p>	<p>MEP Engineer APOGEE CONSULTING GROUP 7330 Chapel Hill Road, Suite 202 Raleigh, NC 27607 Tele: 757-663-8513</p>	<p>Functional Design CARL WALKER INC. 11920 S. Highland Ave. Suite 2107 Lombard, IL 60148 Tele: 630-307-3800</p>	<p>BID SET</p> <table><tr><td colspan="2">Drawing Title PHASING PLAN</td><td colspan="2">Project Title PARKING STRUCTURE LOT 4</td><td colspan="2">Project Number 14.1020</td><td rowspan="2"><p>OFFICE OF FACILITIES MANAGEMENT</p></td></tr><tr><td colspan="2">Approved for Design Concept: FACILITY MANAGEMENT DIVISION MANAGER</td><td colspan="2">Location CLEMENT J ZABLOCKI VAMC</td><td colspan="2">Building Number #150</td></tr><tr><td colspan="2">Date 12/05/2014</td><td colspan="2">Checked By: KJC</td><td colspan="2">Drawing Number CC002</td><td rowspan="2"><p>VA Project Number 695-324</p><p>VA U.S. Department of Veterans Affairs</p></td></tr><tr><td colspan="2"></td><td colspan="2">Drawn By: CMB</td><td colspan="2"></td></tr></table>		Drawing Title PHASING PLAN		Project Title PARKING STRUCTURE LOT 4		Project Number 14.1020		<p>OFFICE OF FACILITIES MANAGEMENT</p>	Approved for Design Concept: FACILITY MANAGEMENT DIVISION MANAGER		Location CLEMENT J ZABLOCKI VAMC		Building Number #150		Date 12/05/2014		Checked By: KJC		Drawing Number CC002		<p>VA Project Number 695-324</p> <p>VA U.S. Department of Veterans Affairs</p>			Drawn By: CMB			
Drawing Title PHASING PLAN		Project Title PARKING STRUCTURE LOT 4		Project Number 14.1020		<p>OFFICE OF FACILITIES MANAGEMENT</p>																												
Approved for Design Concept: FACILITY MANAGEMENT DIVISION MANAGER		Location CLEMENT J ZABLOCKI VAMC		Building Number #150																														
Date 12/05/2014		Checked By: KJC		Drawing Number CC002		<p>VA Project Number 695-324</p> <p>VA U.S. Department of Veterans Affairs</p>																												
		Drawn By: CMB																																