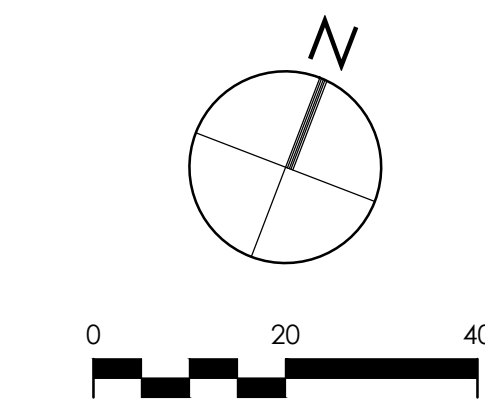
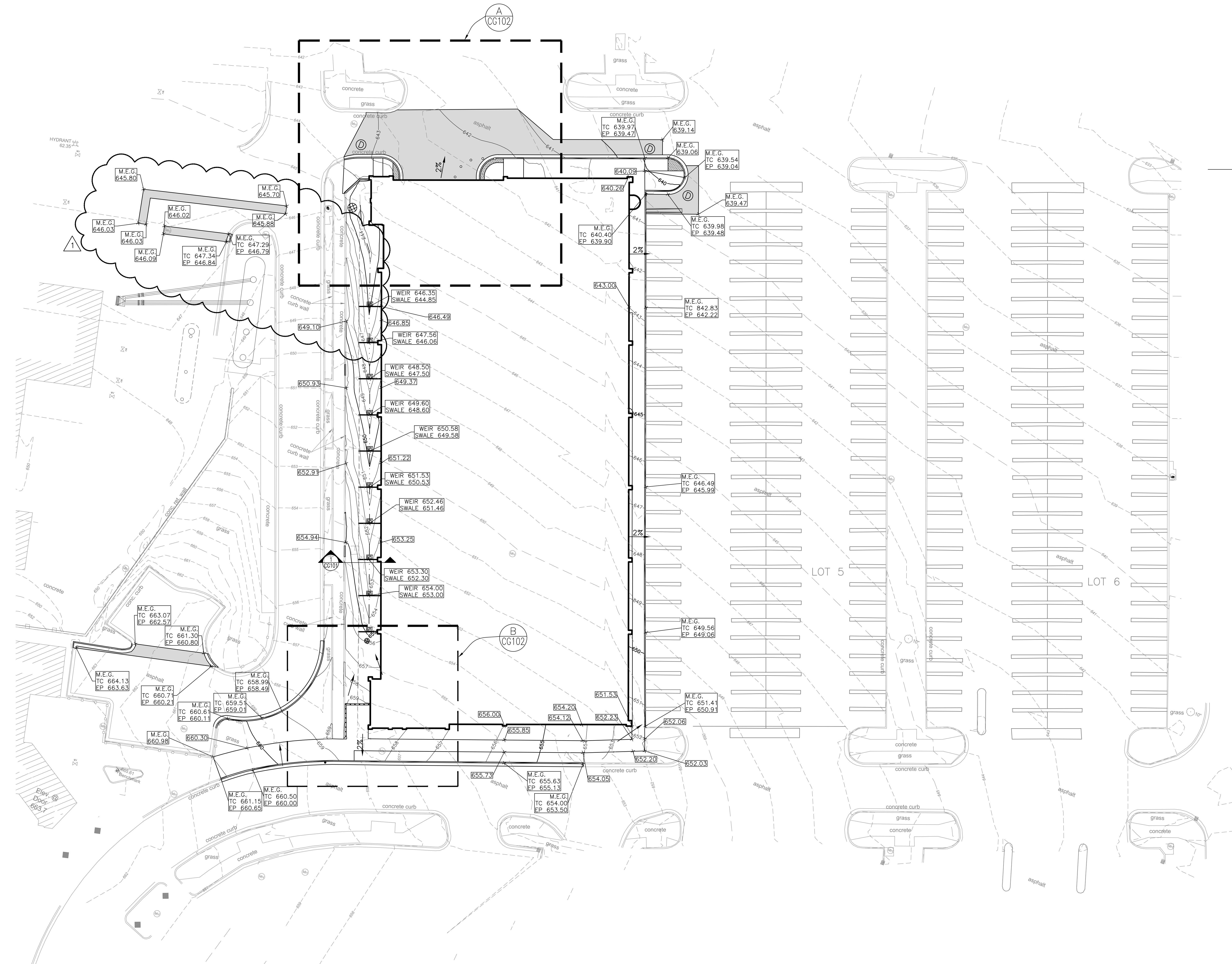

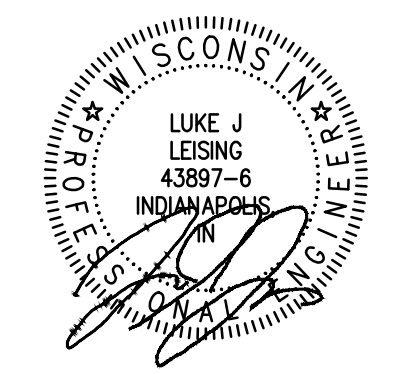



three inches = one foot
one and one half inches = one foot
one inch = one foot
three quarters inch = one foot
one half inch = one foot
three eighths inch = one foot
one quarter inch = one foot
one eighth inch = one foot
C:\Users\jordan\Documents\CD_REV1_LOCAL\14_1020-A_VAMC Grading.dwg



- GRADING PLAN LEGEND**
- > DRAINAGE DIRECTION FLOW
 - M.E.G. MATCH EXISTING GRADE
 - 648.58 SPOT ELEVATION
 - TW 648.58 TOP OF WALL
 - TC 648.53 TOP OF CURB
 - EP 648.20 EDGE OF PAVEMENT
 - 101--- EXISTING MINOR CONTOUR
 - 100--- EXISTING MAJOR CONTOUR
 - 101— PROPOSED MINOR CONTOUR
 - 100— PROPOSED MAJOR CONTOUR

AMENDMENT 1 Revisions: 03/27/15 Date		  U.S. Department of Veterans Affairs VAMC MILWAUKEE 5000 W. National Ave. Milwaukee, WI 53295						ARCHITECT/ENGINEERS: PROJECT LEAD Architect, Structural Engineer, Civil Engineer GUIDON DESIGN 905 N. CAPITOL AVE. SUITE 100, INDIANAPOLIS, IN 46204 317.660.6388 WWW.GUIDONDESIGN.COM SUSTAINABLE ARCHITECTURE + ENGINEERING		MEP Engineer APOGEE CONSULTING GROUP 7330 Chapel Hill Road, Suite 202 Raleigh, NC 27607 Tele: 757-663-8513		Functional Design CARL WALKER INC. 11920 S. Highland Ave. Suite 2107 Lombard, IL 60148 Tele: 630-307-3800		BID SET Drawing Title SITE GRADING PLAN Project Title PARKING STRUCTURE LOT 4 Location CLEMENT J ZABLOCKI VAMC Date 12/05/2014 Checked By: KJC Drawn By: CMB		Project Number 14.1020 Building Number #150 Drawing Number CG101		OFFICE OF FACILITIES MANAGEMENT VA Project Number 695-324  U.S. Department of Veterans Affairs	
---	--	---	--	--	--	---	--	---	--	---	--	--	--	--	--	--	--	--	--