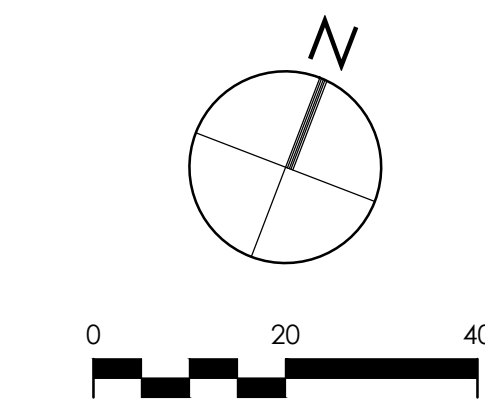
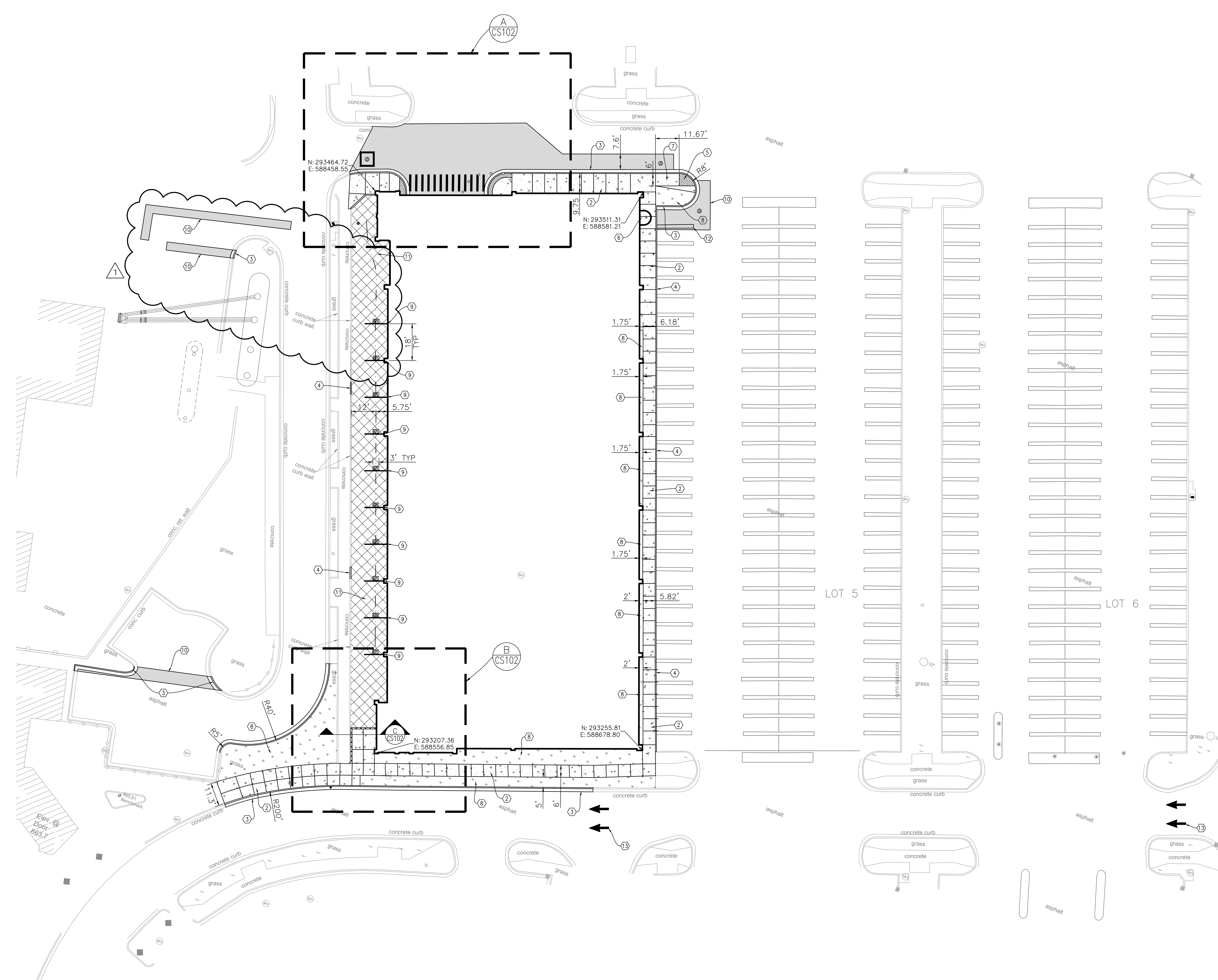


three inches = one foot  
one and one half inches = one foot  
one inch = one foot  
three quarters inch = one foot  
one half inch = one foot  
three eighths inch = one foot  
one quarter inch = one foot  
one eighth inch = one foot  
C:\Users\jordan\Documents\CD\_REV1\LOCAL314\_1020-A\_VAMC Garage.dwg



| SITE PLAN LEGEND            |  |                   |  |
|-----------------------------|--|-------------------|--|
| ASPHALT PAVEMENT            |  | CONCRETE SIDEWALK |  |
| LANDSCAPE AREA              |  | BIORETENTION AREA |  |
| BIORETENTION SWALE FLOWLINE |  |                   |  |

- SITE PLAN KEYNOTES
1. ASPHALT PAVEMENT
  2. CONCRETE SIDEWALK
  3. CONCRETE CURB & GUTTER
  4. CONCRETE CURB
  5. TRUNCATED DOME TACTILE WARNING STRIP
  6. SNOW CHUTE (SEE STRUCTURAL PLANS FOR DETAILS)
  7. ADA RAMP
  8. LANDSCAPE AREA (SEE LANDSCAPE PLANS FOR PLANTINGS & DETAILS)
  9. CONCRETE WEIR & RIP RAP (SEE DETAIL CS102)
  10. TYPE 2 UTILITY TRENCH PATCH
  11. BIORETENTION AREA (SEE LANDSCAPE PLANS FOR PLANTINGS)
  12. PARKING STRIPING, YELLOW, PAINTED, 4" WIDE
  13. DIRECTIONAL ARROWS, WHITE, PAINTED

|  |   |                         |   |  |   |  |   |  |  |
|--|---|-------------------------|---|--|---|--|---|--|--|
| <div>AMENDMENT 1<br/>Revisions:</div> <div>03/27/15<br/>Date</div> | <div> U.S. Department of Veterans Affairs</div> <div>VAMC MILWAUKEE<br/>5000 W. National Ave. Milwaukee, WI 53295</div> | <div></div> <div></div> | <div>ARCHITECT/ENGINEERS:</div> <div>PROJECT LEAD<br/>Architect, Structural Engineer, Civil Engineer<br/><b>GUIDON DESIGN</b></div> <div>905 N. CAPITOL AVE. SUITE 100, INDIANAPOLIS, IN 46204<br/>317.660.6388<br/>WWW.GUIDONDESIGN.COM<br/>SUSTAINABLE ARCHITECTURE + ENGINEERING</div> | <div>MEP Engineer<br/>APOGEE CONSULTING GROUP</div> <div>7330 Chapel Hill Road, Suite 202<br/>Raleigh, NC 27607<br/>Tele: 757-663-8513</div> | <div>Functional Design<br/>CARL WALKER INC.</div> <div>11920 S. Highland Ave. Suite 2107<br/>Lombard, IL 60148<br/>Tele: 630-307-3800</div> | <div>Drawing Title<br/><b>SITE PLAN</b></div> <div>Approved for Design Concept:<br/>FACILITY MANAGEMENT<br/>DIVISION MANAGER</div> | <div>Project Title<br/><b>PARKING STRUCTURE LOT 4</b></div> <div>Location<br/><b>CLEMENT J ZABLOCKI VAMC</b></div> <div>Date<br/>12/05/2014</div> <div>Checked By:<br/>KJC</div> <div>Drawn By:<br/>CMB</div> | <div>Project Number<br/><b>14.1020</b></div> <div>Building Number<br/><b>#150</b></div> <div>Drawing Number<br/><b>CS101</b></div> | <div>OFFICE OF FACILITIES MANAGEMENT</div> <div>VA Project Number<br/><b>695-324</b></div> <div> U.S. Department of Veterans Affairs</div> |
|--|---|-------------------------|---|--|---|--|---|--|--|