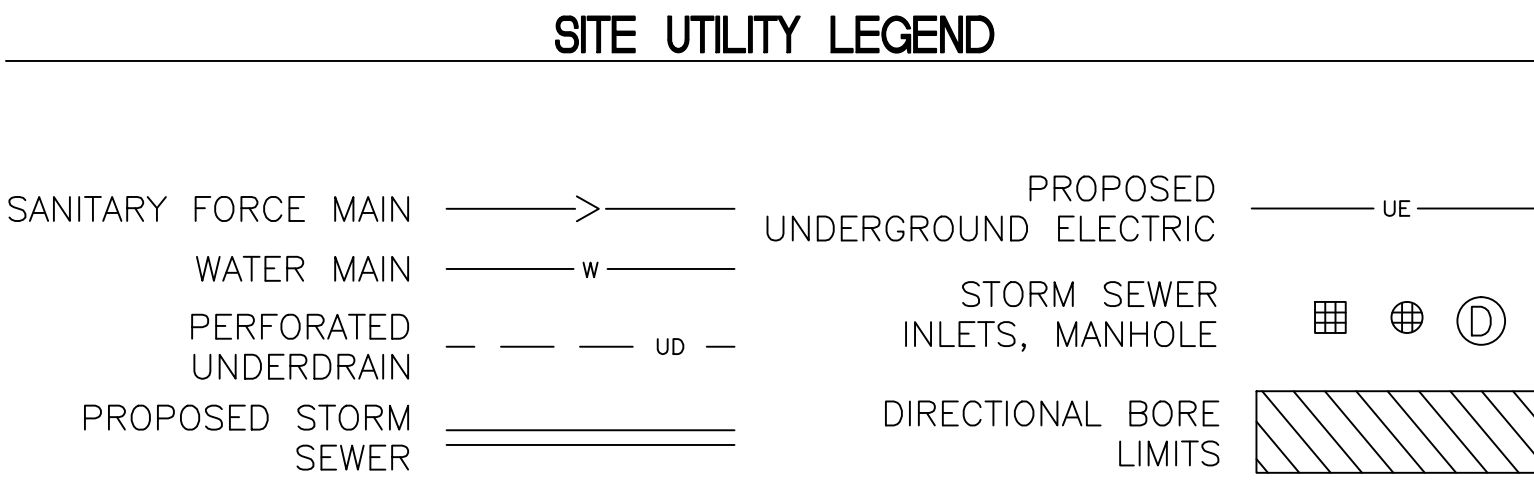
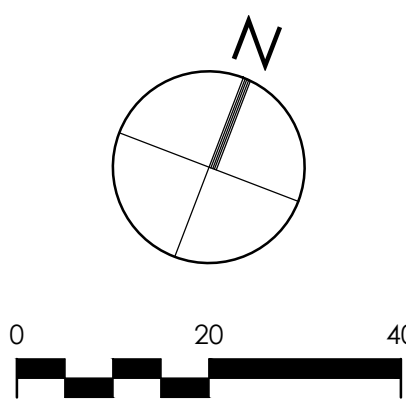
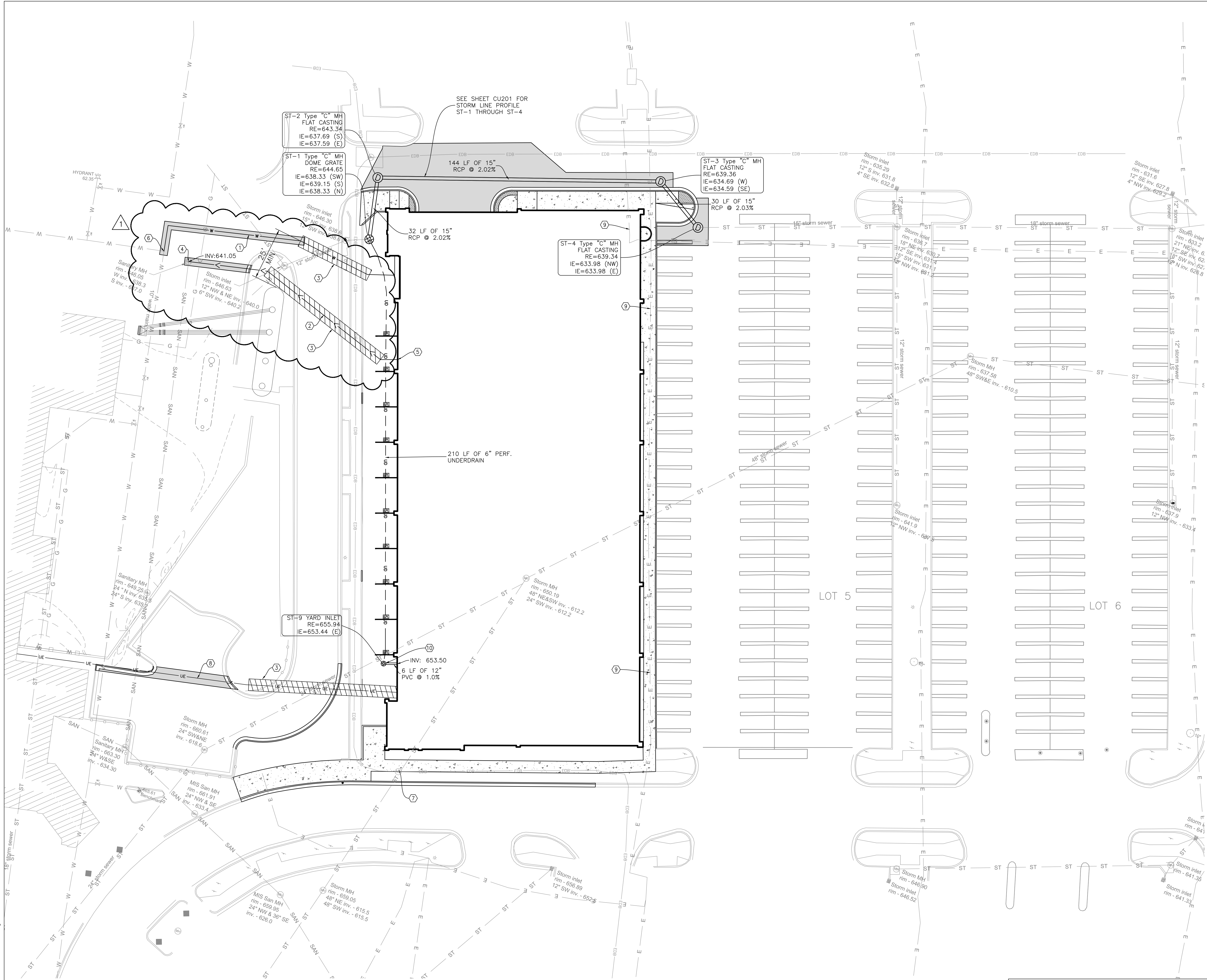



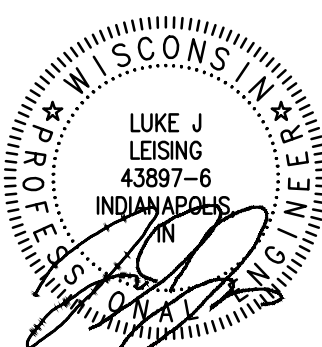



three inches = one foot
one and one half inches = one foot
one inch = one foot
three quarters inch = one foot
one half inch = one foot
three eighths inch = one foot
one quarter inch = one foot
one eighth inch = one foot
one eighth inch = one foot



- SITE UTILITY KEYNOTES**
- 1" WATER SERVICE LINE (PVC, SDR 21)
 - 4" FORCE MAIN (HDPE, DR 11)
 - DIRECTIONAL BORE LIMITS
 - CORE DRILL AND CONNECT TO EXISTING STRUCTURE
 - CONNECT TO 4HP GRINDER PUMP (SEE PLUMBING PLANS FOR DETAILS)
 - 1" CORPORATION VALVE AND BOX, CONNECT TO EXISTING WATER MAIN
 - LOCATION OF ELECTRICAL VAULT PER WE ENERGIES WORK ORDER, CONTRACTOR TO FIELD VERIFY AND PROTECT
 - 4" PVC CONDUITS (SEE ELECTRICAL PLANS)
 - 3 PRIMARY POWER
 - 1 EMERGENCY POWER
 - 1 LIFE SAFETY
 - 2 IT/TELECOM
 - COORDINATE WITH ELECTRICAL CONTRACTOR TO RELOCATE ELECTRICAL LINE TO AVOID FOUNDATION AND PILE CAPS. CONTRACTOR TO MAINTAIN CIRCUIT CONTINUITY TO EXISTING CIRCUITS AND MINIMIZE DAMAGE TO ADJACENT PARKING LOT.
 - YARD DRAIN (SEE DETAIL ON C-501)

AMENDMENT 1 Revisions: 03/27/15 Date		  U.S. Department of Veterans Affairs VAMC MILWAUKEE 5000 W. National Ave. Milwaukee, WI 53295						ARCHITECT/ENGINEERS: PROJECT LEAD Architect, Structural Engineer, Civil Engineer GUIDON DESIGN 905 N. CAPITOL AVE. SUITE 100, INDIANAPOLIS, IN 46204 317.860.6388 SUSTAINABLE ARCHITECTURE • ENGINEERING		MEP Engineer APOGEE CONSULTING GROUP 7330 Chapel Hill Road, Suite 202 Raleigh, NC 27607 Tele: 757-663-8513		Functional Design CARL WALKER INC. 11920 S. Highland Ave. Suite 2107 Lombard, IL 60148 Tele: 630-307-3800		Drawing Title SITE UTILITY PLAN		Project Title PARKING STRUCTURE LOT 4		Project Number 14.1020 Building Number #150		OFFICE OF FACILITIES MANAGEMENT	
												Approved for Design Concept: FACILITY MANAGEMENT DIVISION MANAGER		Location CLEMENT J ZABLOCKI VAMC		Drawing Number CU101		VA Project Number 695-324  U.S. Department of Veterans Affairs			
														Date 12/05/2014		Checked By: KJC		Drawn By: CMB			