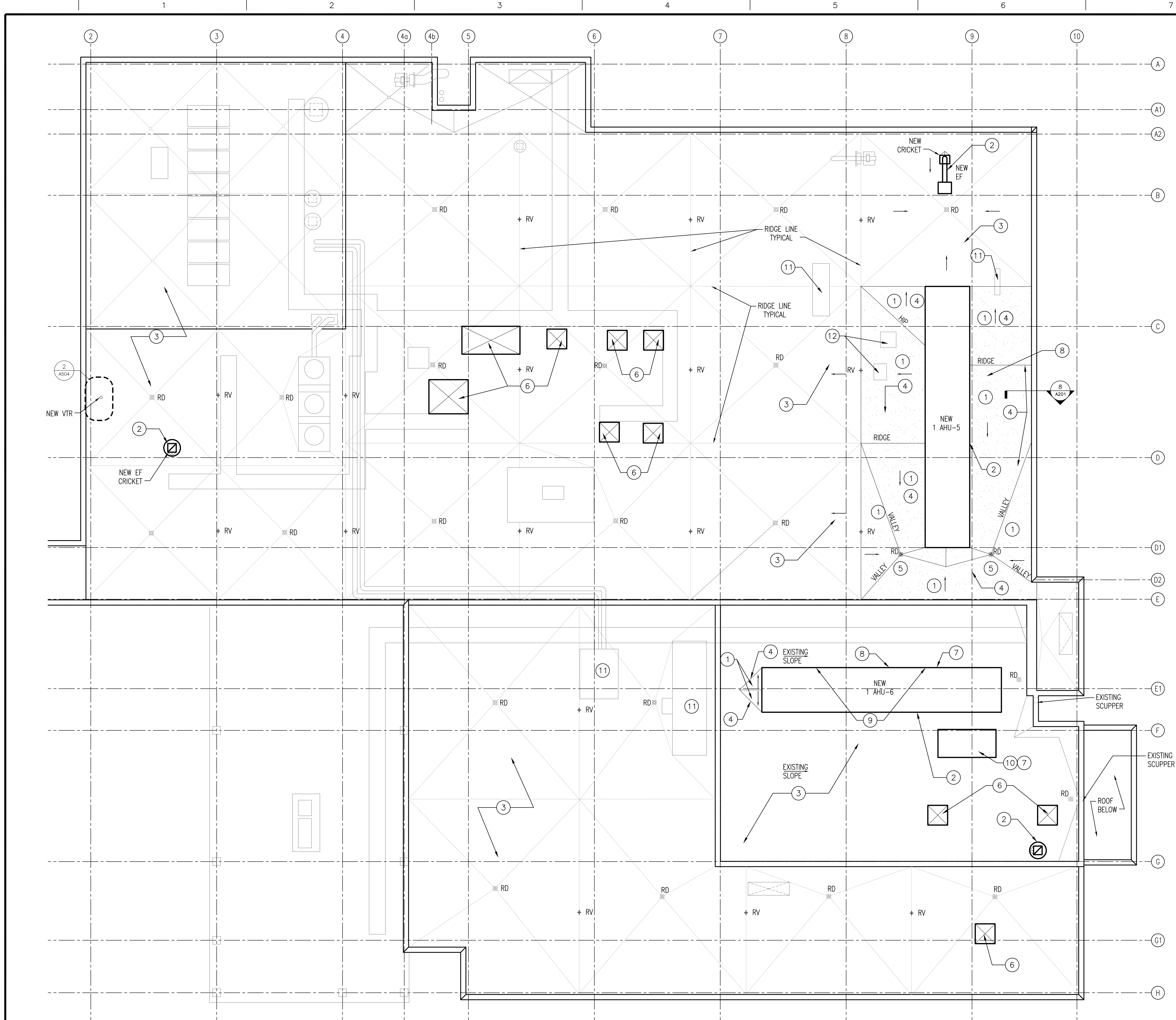
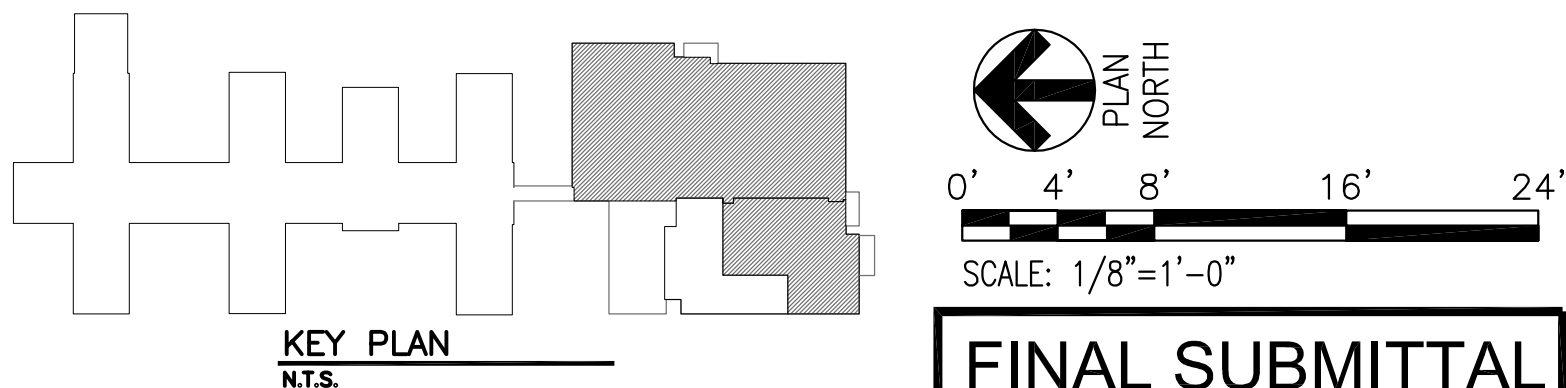


Drawing File: T:\Projects\1307 Renovate Expand Surgical Suite\Fayetteville\Renovate Expand Surgical Suite\Sheets\A131 ROOF PLAN.dwg
Plotted by: GAO, 2014 - 10:59am
Revisions: 11
one eighth inch = one foot
one quarter inch = one foot
three eighths inch = one foot
one half inch = one foot
three quarters inch = one foot
one inch = one foot
one and one half inches = one foot
three inches = one foot



- ### ROOF PLAN KEY NOTES
1. NEW MEMBRANE ROOFING
 2. NEW MECHANICAL EQUIPMENT. SEE MECHANICAL DRAWINGS. PROVIDE NEW CURB AND FLASHING PER 5/A504.
 3. EXISTING ROOF TO REMAIN
 4. NEW CRICKETS AND INSULATION AS REQUIRED TO MODIFY SLOPE.
 5. RELOCATED ROOF DRAINS. COORDINATE WITH PLUMBING DRAWINGS.
 6. PROVIDE CLOSURE CAP ON EXISTING CURB PER DETAIL 4/A504.
 7. CAP ANY REMAINING CONDUIT OR PIPE PENETRATIONS FROM REMOVED EQUIPMENT.
 8. FLASH NEW PIPING PENETRATIONS AT AHU PER DETAILS 3/A504.
 9. REPAIR INSULATION AND MEMBRANE AT OPENING INFILL. TYPICAL.
 10. REMOVE EXISTING AIR COMPRESSOR AND SUPPORTS. REPAIR ROOF AND INSULATION TO MATCH EXISTING.
 11. EXISTING MECHANICAL EQUIPMENT TO REMAIN.
 12. RAISE EXISTING MECHANICAL EQUIPMENT AS REQUIRED TO PROVIDE TOP OF CURB 8" MIN. ABOVE NEW ROOFING SURFACE.

- ### ROOF PLAN LEGEND
- | | |
|--|--------------------------------------|
| | ROOF DRAIN |
| | RIDGE VENT |
| | VENT THROUGH ROOF. SEE DETAIL 2/A131 |
| | EXHAUST FAN |
| | 1/2:12 SLOPED ROOF |
| | HVAC UNIT |



Revisions:	Date:	CONSULTANTS:		ARCHITECT:	 435 Spence Drive Salisbury, NC 28144 704.762.9652	Drawing Title: ROOF PLAN	Project Title: RENOVATE / EXPAND SURGICAL SUITE	Project Number: 565-13-105	OFFICE OF CONSTRUCTION AND FACILITIES MANAGEMENT
		Approved: Project Director		Location: FAYETTEVILLE, NC		Building Number: 1	Drawing Number: A131	Dwg. XX of	
08-22-2014		Checked:		Drawn:					