

PERFORATED RETURN REGISTERS		
SYMBOL	REGISTER SIZE 24"x24"	TYPE
1 CFM	0-135 CFM 6" ROUND NECK	PERFORATED FACE RETURN AIR CEILING DIFFUSER (STEEL CONSTRUCTION)
2 CFM	136-210 CFM 8" ROUND NECK	PERFORATED FACE RETURN AIR CEILING DIFFUSER (STEEL CONSTRUCTION)
3 CFM	211-325 CFM 10" ROUND NECK	PERFORATED FACE RETURN AIR CEILING DIFFUSER (STEEL CONSTRUCTION)
4 CFM	326-475 CFM 12" ROUND NECK	PERFORATED FACE RETURN AIR CEILING DIFFUSER (STEEL CONSTRUCTION)
5 CFM	476-650 CFM 14" ROUND NECK	PERFORATED FACE RETURN AIR CEILING DIFFUSER (STEEL CONSTRUCTION)
6 CFM	651-840 CFM 16" ROUND NECK	PERFORATED FACE RETURN AIR CEILING DIFFUSER (STEEL CONSTRUCTION)
7 CFM	841-2000 CFM 22"x22" NECK	PERFORATED FACE RETURN AIR CEILING DIFFUSER (STEEL CONSTRUCTION)
NOTES: 1. SEE ARCHITECTURAL CEILING PLAN FOR PROPER FRAME STYLE. 2. GRILLES LOCATED IN HARD CEILING AREAS SHALL BE PROVIDED WITH SURFACE MOUNTED FRAMES.		

PERFORATED EXHAUST REGISTERS		
SYMBOL	REGISTER SIZE 24"x24"	TYPE
A CFM	0-135 CFM 6" ROUND NECK	PERFORATED FACE EXHAUST AIR CEILING DIFFUSER (STEEL CONSTRUCTION)
B CFM	136-210 CFM 8" ROUND NECK	PERFORATED FACE EXHAUST AIR CEILING DIFFUSER (STEEL CONSTRUCTION)
C CFM	211-325 CFM 10" ROUND NECK	PERFORATED FACE EXHAUST AIR CEILING DIFFUSER (STEEL CONSTRUCTION)
D CFM	326-475 CFM 12" ROUND NECK	PERFORATED FACE EXHAUST AIR CEILING DIFFUSER (STEEL CONSTRUCTION)
E CFM	476-650 CFM 14" ROUND NECK	PERFORATED FACE EXHAUST AIR CEILING DIFFUSER (STEEL CONSTRUCTION)
F CFM	651-840 CFM 16" ROUND NECK	PERFORATED FACE EXHAUST AIR CEILING DIFFUSER (STEEL CONSTRUCTION)
G CFM	841-2000 CFM 22"x22" NECK	PERFORATED FACE EXHAUST AIR CEILING DIFFUSER (STEEL CONSTRUCTION)
H CFM	12"x12" REGISTER 0-135 CFM 6" NECK	PERFORATED FACE EXHAUST AIR CEILING DIFFUSER (STEEL CONSTRUCTION)
NOTES: 1. SEE ARCHITECTURAL CEILING PLAN FOR PROPER FRAME STYLE. 2. REGISTERS LOCATED IN HARD CEILING AREAS SHALL BE PROVIDED WITH SURFACE MOUNTED FRAMES.		

LOUVERED SUPPLY DIFFUSER		
SYMBOL	CFM RANGE, FACE SIZE, & NECK SIZE TYPICAL MODULE SIZE - 24"x24"	TYPE
1 CFM	0-135 CFM 6"x6" FACE 6" NECK	LOUVERED FACE DIRECTIONAL DIFFUSERS (STEEL CONSTRUCTION)
2 CFM	136-210 CFM 8"x8" FACE 8" NECK	LOUVERED FACE DIRECTIONAL DIFFUSERS (STEEL CONSTRUCTION)
3 CFM	211-325 CFM 12"x12" FACE 10" NECK	LOUVERED FACE DIRECTIONAL DIFFUSERS (STEEL CONSTRUCTION)
4 CFM	326-475 CFM 12"x12" FACE 12" NECK	LOUVERED FACE DIRECTIONAL DIFFUSERS (STEEL CONSTRUCTION)
5 CFM	476-650 CFM 15"x15" FACE 14" NECK	LOUVERED FACE DIRECTIONAL DIFFUSERS (STEEL CONSTRUCTION)
6 CFM	650-840 CFM 18"x18" FACE 16" NECK	LOUVERED FACE DIRECTIONAL DIFFUSERS (STEEL CONSTRUCTION)
7 CFM	841-1125 CFM 18"x18" FACE & NECK	LOUVERED FACE DIRECTIONAL DIFFUSERS (STEEL CONSTRUCTION)
NOTES: 1. SEE ARCHITECTURAL CEILING PLAN FOR PROPER FRAME STYLE. 2. DIFFUSERS LOCATED IN HARD CEILING AREAS SHALL BE PROVIDED WITH SURFACE MOUNTED FRAMES. 3. PROVIDE ROUND NECK ADAPTER.		

LEGEND		
AFMS - AIR FLOW MONITORING STATION	DPS - DIFFERENTIAL PRESSURE SENSOR	HXEAF - HEAT EXCHANGER EXHAUST AIR FAN
DD - DUCT DETECTOR	H - HUMIDITY SENSOR	HXOAF - HEAT EXCHANGER OUTSIDE AIR FAN
FS - FIRE STAT	SP - STATIC PRESSURE SENSOR	SAF - SUPPLY AIR FAN
P - HIGH DISCHARGE PRESSURE SWITCH	T - TEMPERATURE SENSOR	RAF - RETURN AIR FAN
VFD - VARIABLE FREQUENCY DRIVE	GEAF - GENERAL EXHAUST AIR FAN	

SIDEWALL SUPPLY REGISTER		
SYMBOL	CFM RANGE & MODULE SIZE	TYPE
1 CFM	0-225 CFM 10"x6"	LOUVERED SUPPLY SIDEWALL DOUBLE DEFLECTION 3/4" SPACING (STEEL CONSTRUCTION)
2 CFM	226-450 CFM 12"x10"	LOUVERED SUPPLY SIDEWALL DOUBLE DEFLECTION 3/4" SPACING (STEEL CONSTRUCTION)
3 CFM	451-700 CFM 18"x12"	LOUVERED SUPPLY SIDEWALL DOUBLE DEFLECTION 3/4" SPACING (STEEL CONSTRUCTION)
4 CFM	701-900 CFM 24"x12"	LOUVERED SUPPLY SIDEWALL DOUBLE DEFLECTION 3/4" SPACING (STEEL CONSTRUCTION)
5 CFM	901-1180 CFM 30"x12"	LOUVERED SUPPLY SIDEWALL DOUBLE DEFLECTION 3/4" SPACING (STEEL CONSTRUCTION)
6 CFM	1181-1350 CFM 36"x12"	LOUVERED SUPPLY SIDEWALL DOUBLE DEFLECTION 3/4" SPACING (STEEL CONSTRUCTION)
SEE ARCHITECTURAL CEILING PLAN FOR PROPER FRAME STYLE.		

SIDEWALL EXHAUST REGISTER		
SYMBOL	SIZE	TYPE
A CFM	0-110 CFM 8"x4"	LOUVERED EXHAUST SIDEWALL FIXED LOUVER (45° DEFLECTION) 3/4" SPACING (STEEL CONSTRUCTION)
B CFM	111-250 CFM 10"x8"	LOUVERED EXHAUST SIDEWALL FIXED LOUVER (45° DEFLECTION) 3/4" SPACING (STEEL CONSTRUCTION)
C CFM	251-480 CFM 14"x8"	LOUVERED EXHAUST SIDEWALL FIXED LOUVER (45° DEFLECTION) 3/4" SPACING (STEEL CONSTRUCTION)
D CFM	481-650 CFM 18"x10"	LOUVERED EXHAUST SIDEWALL FIXED LOUVER (45° DEFLECTION) 3/4" SPACING (STEEL CONSTRUCTION)
E CFM	651-835 CFM 18"x12"	LOUVERED EXHAUST SIDEWALL FIXED LOUVER (45° DEFLECTION) 3/4" SPACING (STEEL CONSTRUCTION)
F CFM	836-1400 CFM 24"x18"	LOUVERED EXHAUST SIDEWALL FIXED LOUVER (45° DEFLECTION) 3/4" SPACING (STEEL CONSTRUCTION)
SEE ARCHITECTURAL CEILING PLAN FOR PROPER FRAME STYLE.		

SIDEWALL RETURN REGISTER		
SYMBOL	SIZE	TYPE
1 CFM	0-110 CFM 8"x4"	LOUVERED RETURN SIDEWALL FIXED LOUVER (45° DEFLECTION) 3/4" SPACING (STEEL CONSTRUCTION)
2 CFM	111-250 CFM 10"x8"	LOUVERED RETURN SIDEWALL FIXED LOUVER (45° DEFLECTION) 3/4" SPACING (STEEL CONSTRUCTION)
3 CFM	251-480 CFM 14"x10"	LOUVERED RETURN SIDEWALL FIXED LOUVER (45° DEFLECTION) 3/4" SPACING (STEEL CONSTRUCTION)
4 CFM	481-650 CFM 18"x12"	LOUVERED RETURN SIDEWALL FIXED LOUVER (45° DEFLECTION) 3/4" SPACING (STEEL CONSTRUCTION)
5 CFM	651-835 CFM 20"x14"	LOUVERED RETURN SIDEWALL FIXED LOUVER (45° DEFLECTION) 3/4" SPACING (STEEL CONSTRUCTION)
6 CFM	836-1400 CFM 24"x18"	LOUVERED RETURN SIDEWALL FIXED LOUVER (45° DEFLECTION) 3/4" SPACING (STEEL CONSTRUCTION)
SEE ARCHITECTURAL CEILING PLAN FOR PROPER FRAME STYLE.		

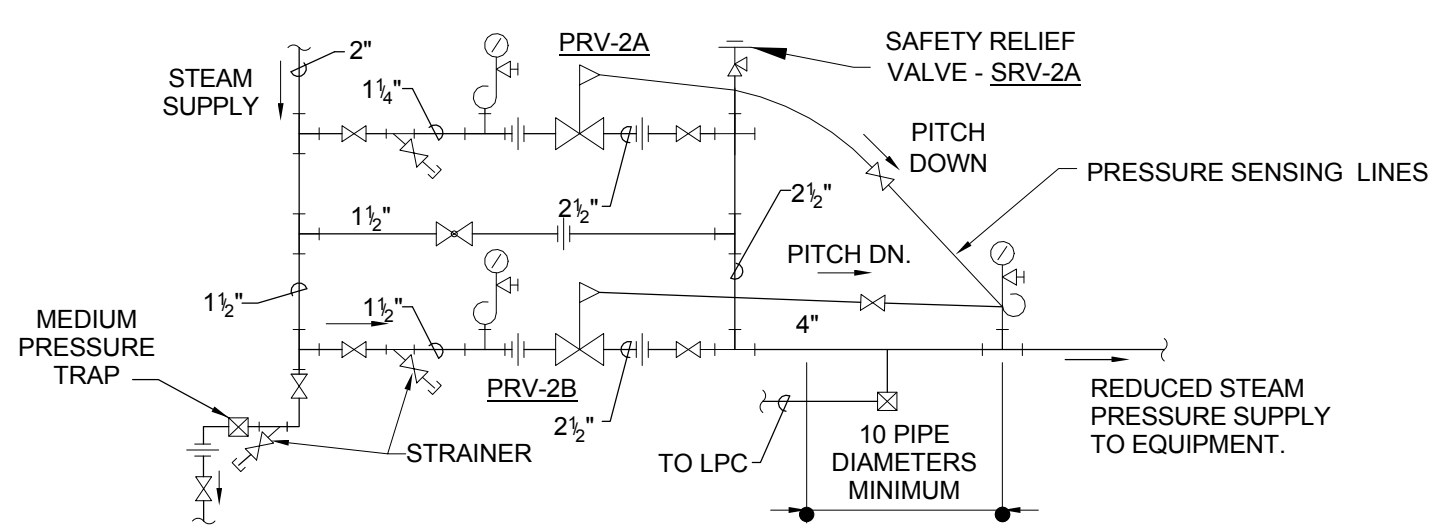
HEAT TRANSFER PACKAGE SCHEDULE

UNIT NUMBER	MINIMUM CAPACITY BTU/HR	TUBE SIDE				SHELL SIDE	HEAT EXCHANGER MODEL NO.	PUMPS			PUMP SIZE	LOCATION	REMARKS
		E.W.T. °F	L.W.T. °F	GPM MINIMUM	MAX. P.D. PSI	STEAM PSI & #/HR		GPM	FT. HEAD	HP			
HTP-1	1,200,000	160	180	120	1.4	15/1,221	WS-1002-200-1	(2) @ 120	55' EACH	3	3"x1 1/2"x8"	CRAWLSPACE	
NOTES: 1. PACKAGE TO INCLUDE DUPLEX PACKAGED CONDENSATE PUMPS (2 @ 1/2HP), AIR SEPARATOR WITH STRAINER, HIGH CAPACITY AUTOMATIC AIR VENT, STEAM CONTROL VALVE, COMBINATION PRV AND PRV WITH FAST FILL 1/2" MAKE UP LINE, STEAM TRAP, STEAM PRESSURE RELIEF VALVE, BLADDER TYPE EXPANSION TANK, CONTROL PANEL WITH VFD'S AND DISCONNECTS.													

FAN SCHEDULE

FAN NO.	SERVICES	LOCATION	CFM	FAN RPM	EXTERNAL STATIC PRESS. IN W.G.	FAN WHEEL TYPE	MOTOR HP/VOLTPHASE	DRIVE TYPE	FAN TYPE	CONTROL SWITCH & INTERLOCK TYPE	STARTER	DISC. SW.
EF-1	1ST FLOOR GENERAL EXHAUST	ROOF	6,585	2,573	2.0	BACKWARD INCLINED	7 1/2 / 208V / 3ø	BELT	TUBE AXIAL INLINE	CONSTANT	EC	EC
EF-2	1ST FLOOR GENERAL EXHAUST	ROOF	6,585	2,573	2.0	BACKWARD INCLINED	7 1/2 / 208V / 3ø	BELT	TUBE AXIAL INLINE	CONSTANT	EC	EC
EF-3	GROUND FLOOR EXHAUST	ROOF	1,680	1,814	1.5	BACKWARD INCLINED	1 / 208V / 3ø	BELT	ROOF MOUNTED CENTRIFUGAL	CONSTANT	EC	EC
EF-4	CRAWL SPACE EXHAUST	CRAWL SPACE 1	115	2,850	0.6	FORWARD CURVE	61W / 115V / 13ø	DIRECT	INLINE EXHAUST FAN	INTERLOCKED WITH HUMIDISTAT	N/A	EC
EF-5	CRAWL SPACE EXHAUST	CRAWL SPACE 3	115	2,850	0.6	FORWARD CURVE	61W / 115V / 1ø	DIRECT	INLINE EXHAUST FAN	INTERLOCKED WITH HUMIDISTAT	N/A	EC

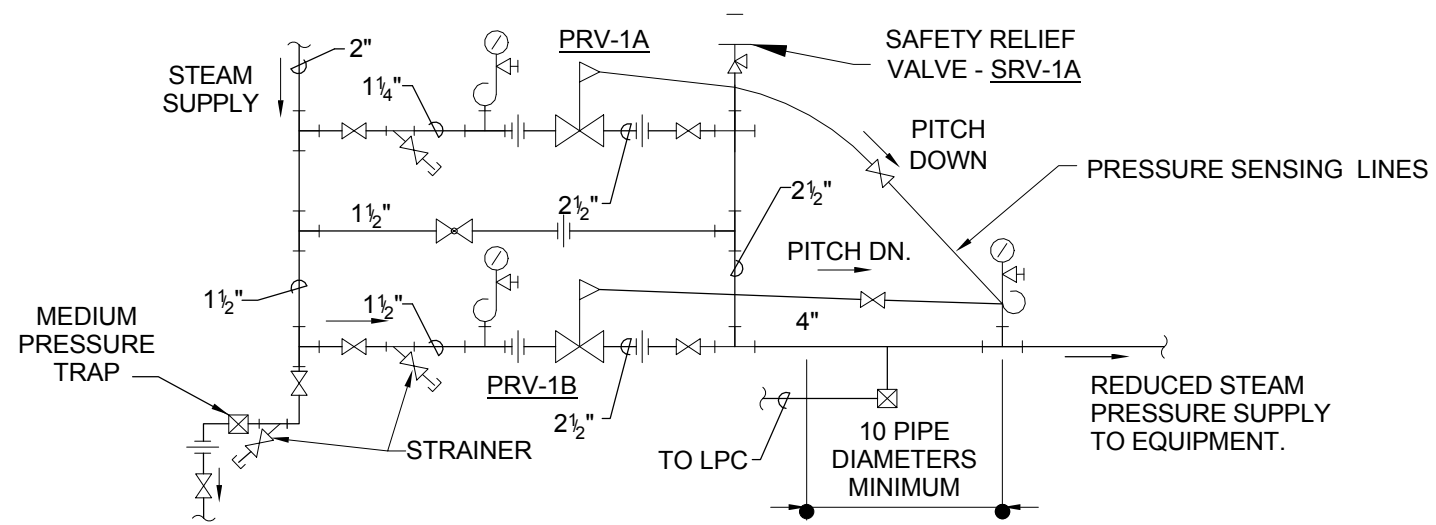
- NOTES:
 1. PROVIDE BACKDRAFT DAMPER, BIRD SCREEN AND ROOF CURB (FOR ROOF MOUNTED FANS).
 2. PROVIDE VIBRATION ISOLATORS, SEE SPECIFICATIONS.
 3. COORDINATE HEIGHT OF ROOF CURB WITH ROOFING CONTRACTOR
 4. BASIS OF DESIGN PER FAN: EF-1 AND EF-2 - GREENHECK TBI-CA-SL20-75, EF-3 - GREENHECK GB-141-10, EF-4 AND EF-5 - FANTECH FR-140.



PRESSURE REDUCING VALVE STATION SCHEDULE							
PRESSURE REDUCING VALVES					SAFETY RELIEF VALVE		
PRV-#	ENTERING PRESSURE (psl)	LEAVING PRESSURE (psl)	STEAM CAPACITY (LBS/HR)	VALVE SIZE (in)	PORT TYPE	SRV-#	DISCHARGE PRESSURE (psl)
PRV-2A	100	15	1,200	1-1/4"	NORMAL	SRV-2A	20
PRV-2B	100	15	2,500	1-1/2"	FULL		
NOTES: 1. PROVIDE ORIFICE TYPE FLOW METER UPSTREAM OF PIPE FLOW AS REQUIRED. 2. GATE VALVES SHOULD BE FULLY OPEN TO PROVIDE UNRESTRICTED FLOW. 3. PROVIDE PILOT OPERATED REGULATORS. 4. PROVIDE DRIP PAN ELBOW FROM SRV-1A, OUTLET SIZE OF SRV-1A SHALL MATCH INLET OF DRIP PAN ELBOW. 5. SIZING VARIES BY MANUFACTURER. PERFORMANCE SHALL BE VERIFIED.							

STEAM PRESSURE REDUCING VALVE STATION (CRAWL SPACE)

NTS 2



PRESSURE REDUCING VALVE STATION SCHEDULE							
PRESSURE REDUCING VALVES					SAFETY RELIEF VALVE		
PRV-#	ENTERING PRESSURE (psl)	LEAVING PRESSURE (psl)	STEAM CAPACITY (LBS/HR)	VALVE SIZE (in)	PORT TYPE	SRV-#	DISCHARGE PRESSURE (psl)
PRV-1A	100	15	1,080	1-1/4"	NORMAL	SRV-1A	20
PRV-1B	100	15	2,120	1-1/2"	FULL		
NOTES: 1. PROVIDE ORIFICE TYPE FLOW METER UPSTREAM OF PIPE FLOW AS REQUIRED. 2. GATE VALVES SHOULD BE FULLY OPEN TO PROVIDE UNRESTRICTED FLOW. 3. PROVIDE PILOT OPERATED REGULATORS. 4. PROVIDE DRIP PAN ELBOW FROM SRV-1A, OUTLET SIZE OF SRV-1A SHALL MATCH INLET OF DRIP PAN ELBOW. 5. SIZING VARIES BY MANUFACTURER. PERFORMANCE SHALL BE VERIFIED.							

STEAM PRESSURE REDUCING VALVE STATION (CRAWL SPACE)

NTS 1



5960 Fairview Road
Suite 500
Charlotte, NC 28210

13620 Reese Blvd.
Suite 100
Huntersville, NC 28078

704
987.3500
987.3507 fax

704
401.2040
401.2067 fax

CE PROJ # 3132

MECHANICAL/ELECTRICAL/PLUMBING/FIRE PROTECTION:
Charlotte Engineers, LLP
 5838 Monroe Road, Suite 100
 Charlotte, NC 28212
 704.531.3000 PHONE

STRUCTURAL:
Fitzpatrick Engineering Group, PLLC
 19520 West Catawba Ave., Ste. 311
 Cornelius, NC 28031
 704.887.3114 PHONE
 704.887.9938 FAX

CIVIL/LANDSCAPING:
COLEJENEST & STONE, P.A.
 200 South Tryon Street, Suite 1400
 Charlotte, North Carolina 28202
 704.376.1555 PHONE
 704.376.7851 FAX

Project

VAMC Salisbury Building 11 - Additions & Renovations

City, State
Salisbury, NC

VA Contract Number

VA246-12-C-0089

Issued For

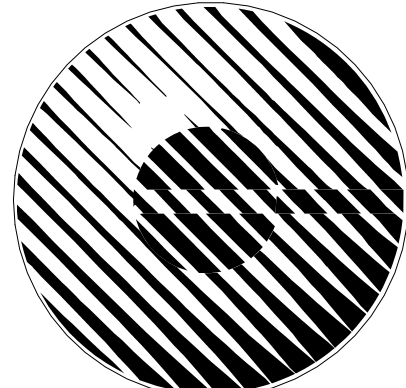
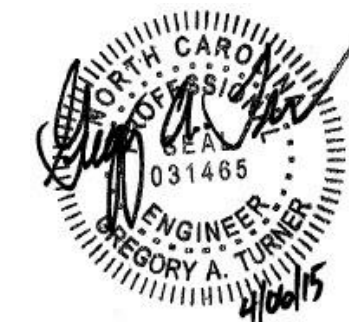
Construction

Item	Date	Description
1	04-06-15	ADDENDUM 001

Drawn By **SMN**

Checked By **GAT**

Seal / Signature



Charlotte Engineers, LLP

5838 Monroe Road, Suite 100
 Charlotte, NC 28212
 704 531 3000
 704 531 3001 FAX
 Firm License Number: F-0674

Sheet Title

MECHANICAL - SCHEDULES

Date

August 28, 2014

Sheet Number

M-002B