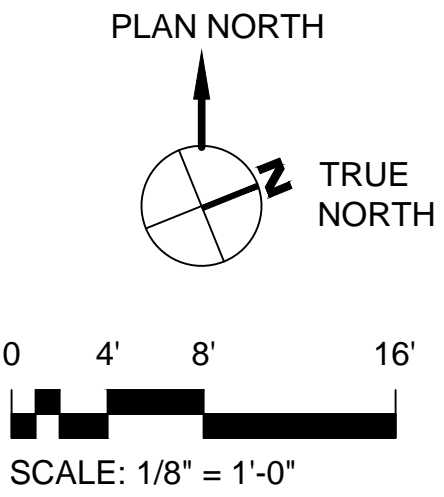


- | SHEET KEYNOTES |  |
|----------------|--|
| ①              | DEMOLISH EXISTING SS PIPE WITHIN FOOTPRINT OF NEW BUILDING. NEW PIPE TO BE INSTALLED IN NEW WORK. REF. CIVIL DWGS.                   |
| ②              | DEMOLISH SECTION OF 1" CW AND HW PIPING AND VALVES AS SHOWN. PIPE TO BE REPLACED BY LARGER PIPE IN NEW WORK.                         |
| ③              | DEMOLISH EXISTING 1/2" 90-DEGREE ELBOW IN HWR PIPING. REPLACE WITH TEE IN NEW WORK.  |
| ④              | DEMOLISH EXISTING 4" SS PIPE TO CONNECTION WITH SS MAIN (LOCATION APPROXIMATE). NEW MH TO BE INSTALLED IN NEW WORK. REF. CIVIL DWGS. |


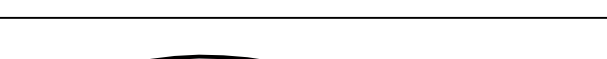

GENERAL PLUMBING NOTES
FOR GENERAL PLUMBING NOTES, SEE DWG. PP001.

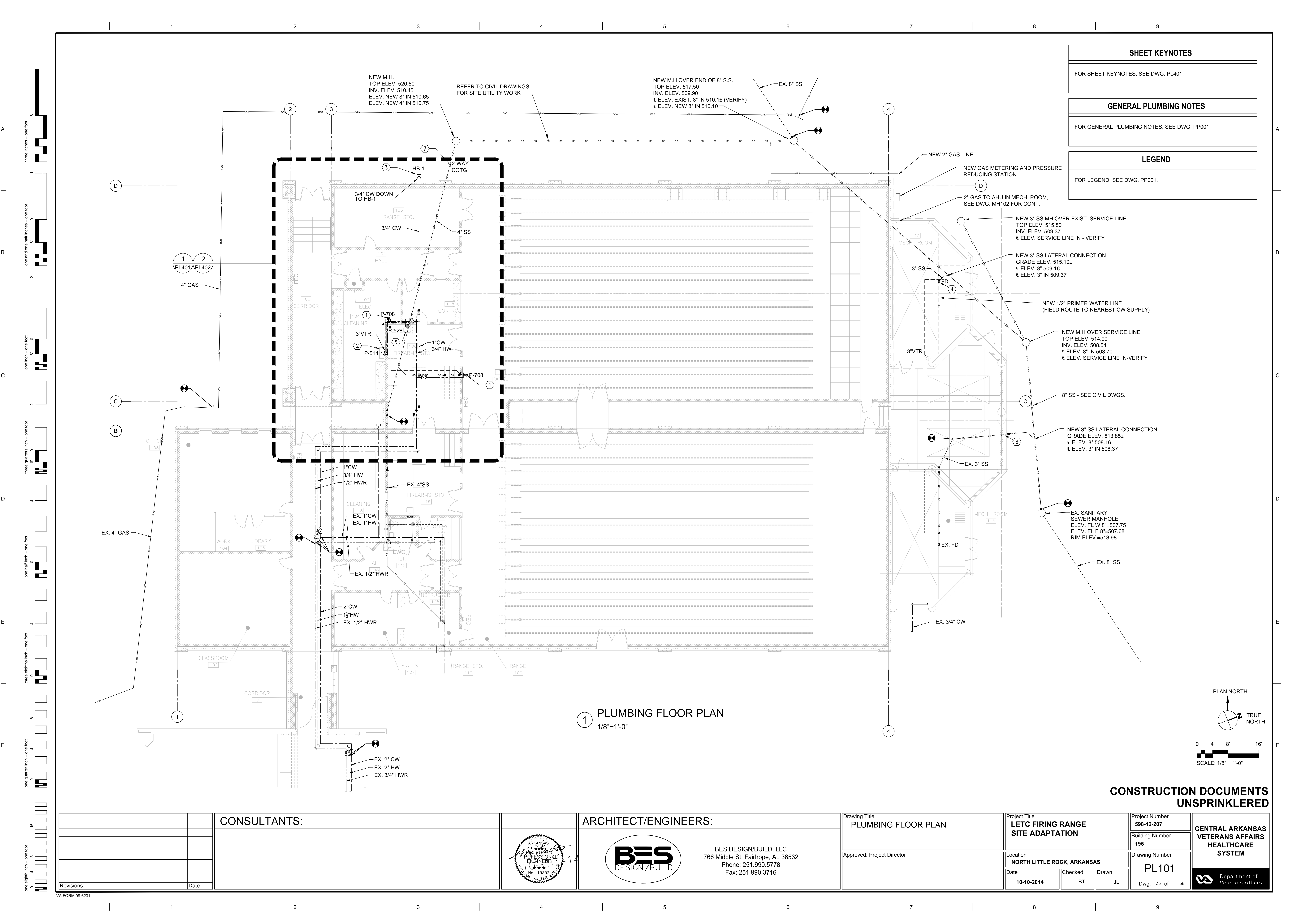
LEGEND
FOR LEGEND, SEE DWG. PP001.

① PLUMBING DEMOLITION PLAN  
1/8"=1'-0"



CONSTRUCTION DOCUMENTS  
UNSPRINKLERED

		<div>CONSULTANTS:</div>	<div></div>	<div><div>ARCHITECT/ENGINEERS:</div><div><div></div><div>BES DESIGN/BUILD, LLC 766 Middle St, Fairhope, AL 36532 Phone: 251.990.5778 Fax: 251.990.3716</div></div></div>	<div>Drawing Title</div> <div>PLUMBING DEMOLITION PLAN</div>	<div>Project Title</div> <div>LETC FIRING RANGE SITE ADAPTATION</div>	<div>Project Number</div> <div>598-12-207</div>	<div>CENTRAL ARKANSAS VETERANS AFFAIRS HEALTHCARE SYSTEM</div> <div> Department of Veterans Affairs</div>				
						<div>Building Number</div> <div>195</div>	<div>Drawing Number</div> <div>PD101</div>					
						<div>Approved: Project Director</div>	<div>Location</div> <div>NORTH LITTLE ROCK, ARKANSAS</div>		<div>Date</div> <div>10-10-2014</div>	<div>Checked</div> <div>BT</div>	<div>Drawn</div> <div>JL</div>	<div>Dwg. 34 of 58</div>
Revisions:	Date											



SHEET KEYNOTES

FOR SHEET KEYNOTES, SEE DWG. PL401.

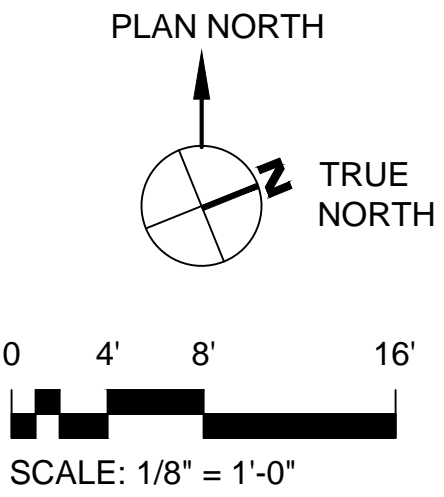
GENERAL PLUMBING NOTES

FOR GENERAL PLUMBING NOTES, SEE DWG. PP001.

LEGEND

FOR LEGEND, SEE DWG. PP001.

1 PLUMBING FLOOR PLAN  
1/8"=1'-0"



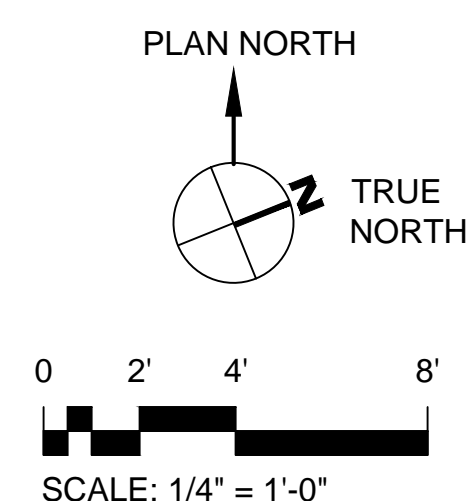
CONSTRUCTION DOCUMENTS  
UNSPRINKLERED

CONSULTANTS:		ARCHITECT/ENGINEERS:		Drawing Title PLUMBING FLOOR PLAN	Project Title LETC FIRING RANGE SITE ADAPTATION	Project Number 598-12-207	CENTRAL ARKANSAS VETERANS AFFAIRS HEALTHCARE SYSTEM	
				Approved: Project Director	Location NORTH LITTLE ROCK, ARKANSAS	Building Number 195		
Revisions:					Date 10-10-2014	Checked BT		
Date					Drawn JL	Dwg. 35 of 58		





- | LEGEND                      |
|-----------------------------|
| FOR LEGEND, SEE DWG. PP001. |



**CONSTRUCTION DOCUMENTS  
UNSPRINKLERED**

[illegible]



A

B

C

D

E

F

A

B

C

D

E

F

PLUMBING FIXTURE SCHEDULE						
ITEM	DESCRIPTION (LOCATION)	CW	HW	WASTE	VENT	REMARKS (SEE NOTE 1)
P-504*	UTILITY SINK	3/4"	3/4"	3"	3"	FREE STANDING COMMERCIAL, 16 GA. STAINLESS STEEL, SINGLE BOWL WITH ADJUSTABLE LEGS & BACKSPLASH, WHITEHAUS WHLS3618 AND SERVICE SINK FAUCET WHFS9814-08-C, 3/4" MALE THREAD OUTLET, SWIVEL SPOUT
P-528	SINK, CRS	1/2"	1/2"	1 1/2"	1 1/2"	ADA COMPLIANT, SINGLE BOWL, STAINLESS STEEL, SELF-RIMMING, 22"X22"X6-1/2" DEEP BOWL, BASKET STRAINER, BASKET STRAINER. ELKAY #LRAD2222 WITH GOOSENECK FAUCET & 4" WRIST BLADE HANDLES, ELKAY #LK406 W/ SPOUT-8
P-708	EMERGENCY EYE & FACE WASH	3/4"	3/4"	1 1/2"	1 1/2"	CRS, WALL MOUNTED, STRAINER, P-TRAP & FOOT PEDAL CONTROL, HAWS AXION MSR 7360BT W/ FOOT TREADLE SP220W

\* NON-STANDARD EQUIPMENT NUMBER

NOTES:

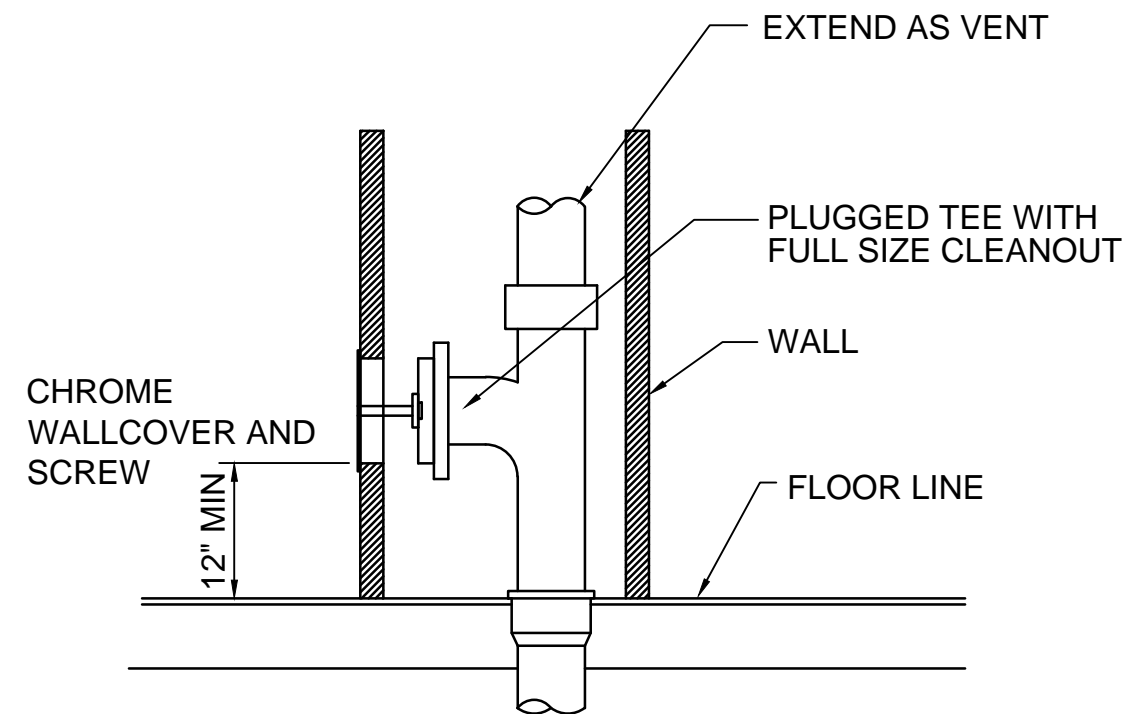
- BASIS OF DESIGN IS NOT INTENDED TO LIMIT EQUIPMENT SELECTION. PROVIDE INDICATED EQUIPMENT OR EQUIPMENT OF EQUAL PERFORMANCE AND QUALITY.
- PROVIDE PIPE PROTECTION AT ALL LAVATORY HW/CW PIPING, DRAINS & TRAPS FOR ADA COMPLIANCE.

MISCELLANEOUS EQUIPMENT:

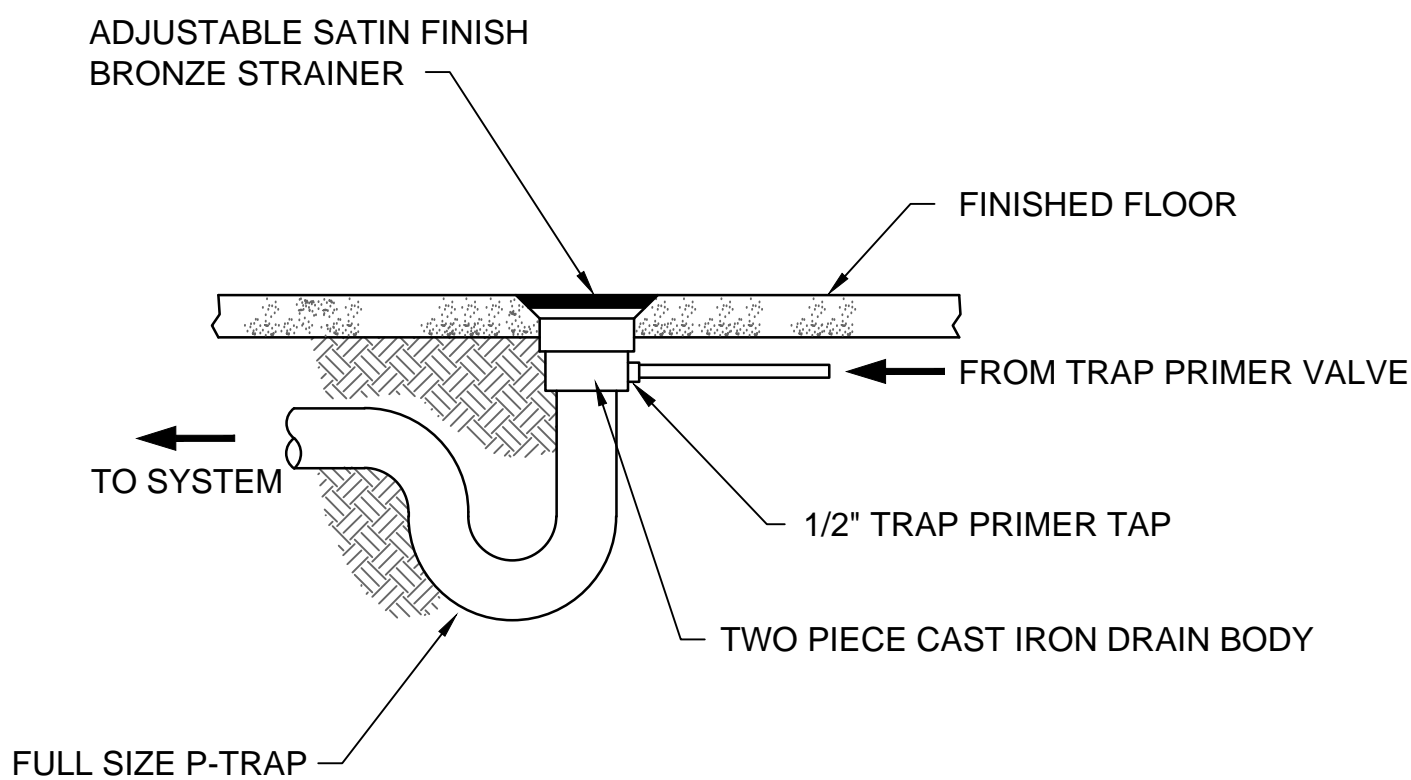
WATER HAMMER ARRESTORS: PERMANENTLY SEALED MECHANICAL DEVICE, PRE-CHARGED, THREADED CONNECTION. ASSE 1010 - 2004 CERTIFIED. INSTALL AS CLOSE AS POSSIBLE TO QUICK-CLOSING VALVE. NO ACCESS PANEL REQUIRED. PISTON-TYPE: HARD DRAWN SEALED COPPER BODY WITH PLASTIC RINGS AND PISTON, THREADED ADAPTER: SIOUX CHIEF 650 SERIES OR EQUAL.

WALL MOUNTED CONCEALED ARM LAVATORY CARRIER: WATTS CA-462.

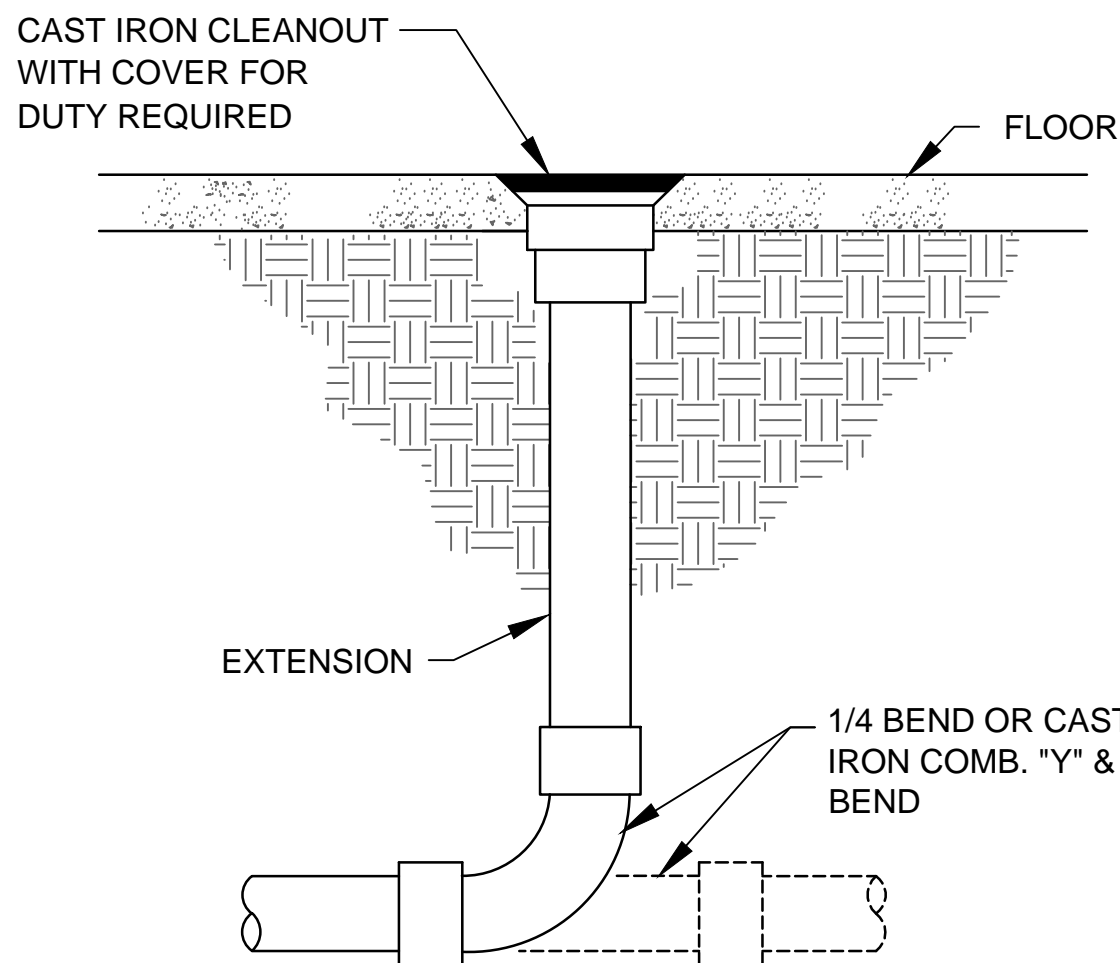
FLOOR DRAIN: 4" NICKEL BRONZE TOP W/ PROSET TRAP GUARD T35630.



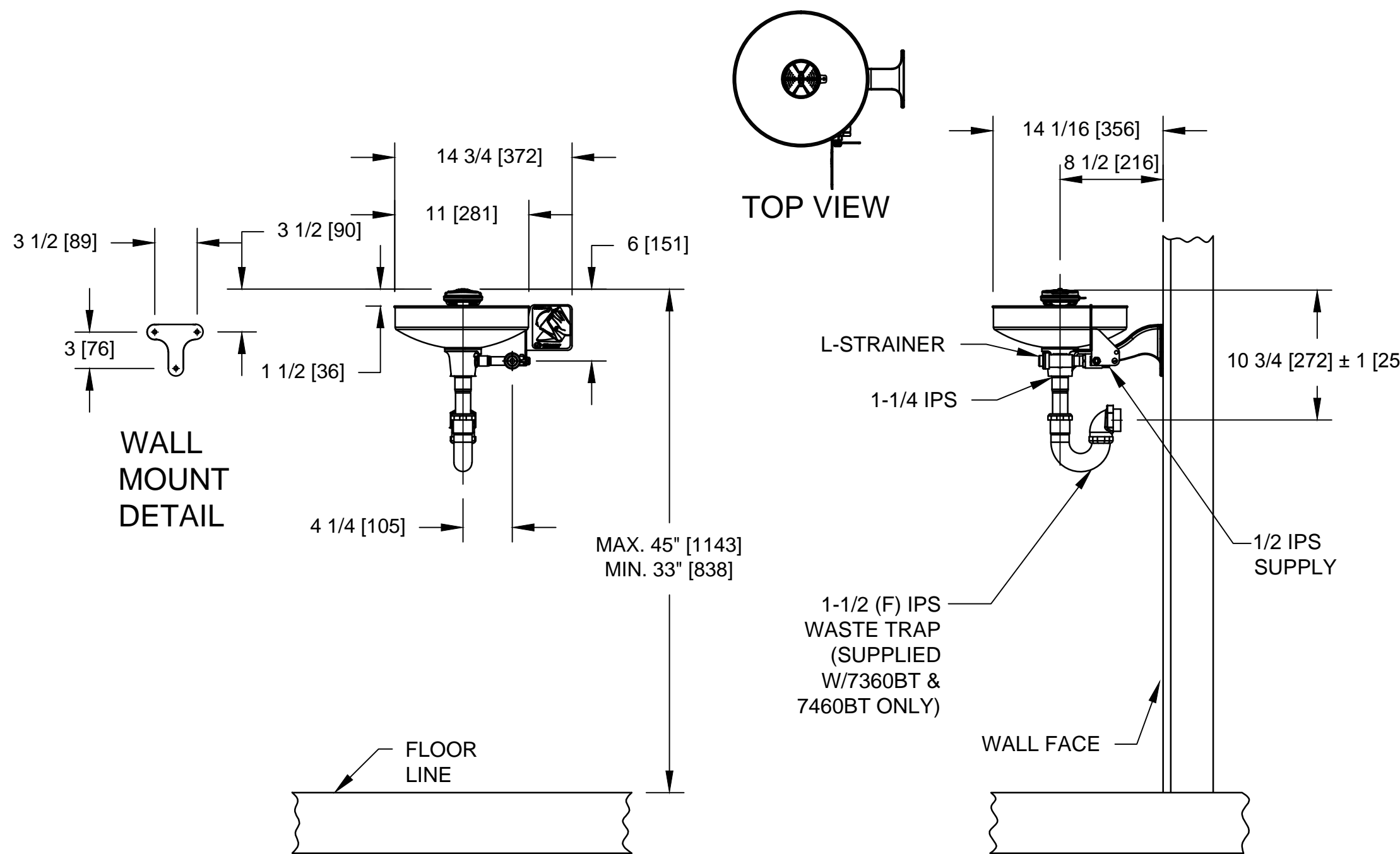
1 TYPICAL WALL CLEANOUT  
SCALE: NONE



2 FLOOR DRAIN DETAIL  
SCALE: NONE



3 TYPICAL FLOOR CLEANOUT  
SCALE: NONE



NOTES:

- METRIC DIMENSIONS ARE IN BRACKETS [X].
- TO COMPLY WITH ANSI Z358.1-2009 FOR EMERGENCY EYEWASH OR EYE/FACE WASH:
  - UNIT SHALL BE INSTALLED IN ACCORDANCE WITH MANUFACTURER'S INSTRUCTIONS AND ACCEPTABLE PLUMBING PRACTICES.
  - EYEWASH OR EYE/FACE WASH SHALL BE POSITIONED WITH NOZZLES NOT LESS THEN 83.8 CM (33 IN.) AND NO GREATER THAN 114.3 CM (45 IN.) FROM SURFACE ON WHICH USER STANDS AND 15.3 CM (6 IN.) MINIMUM FROM WALL OR NEAREST OBSTRUCTION.
- DIMENSIONS MAY VARY BY  $\pm 1/2$  [13].

4 TYPICAL EYE WASH INSTALLATION  
SCALE: NONE

CONSTRUCTION DOCUMENTS  
UNSPRINKLERED

Revisions:		Date		CONSULTANTS:		ARCHITECT/ENGINEERS:		Drawing Title PLUMBING SCHEDULES AND DETAILS	Project Title LETC FIRING RANGE SITE ADAPTATION	Project Number 598-12-207	CENTRAL ARKANSAS VETERANS AFFAIRS HEALTHCARE SYSTEM  Department of Veterans Affairs
								Approved: Project Director	Location NORTH LITTLE ROCK, ARKANSAS	Building Number 195	
									Date 10-10-2014	Checked BT	Drawn JL
											Dwg. 38 of 58