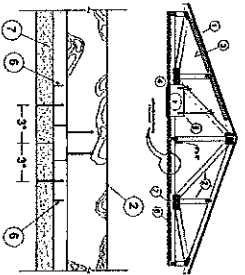




# **CLIMBOUT II** **Assembly - A-6202** **Rev. 1/2001** **Assembly Drawing - 1/2001** **Rev. 1/2001**

CLIMBOUT II Assembly - Rev. 1/2001



1. CLIMBOUT II is a modular, portable, and easy to assemble structure. It is designed for use as a temporary structure for various applications, including construction, storage, and temporary office space. The structure is made of galvanized steel and is designed to be durable and long-lasting.

2. The structure is made of galvanized steel and is designed to be durable and long-lasting. It is designed to be easy to assemble and disassemble, and it is designed to be portable and easy to move.

3. The structure is designed to be easy to assemble and disassemble, and it is designed to be portable and easy to move. It is designed to be durable and long-lasting, and it is designed to be easy to maintain.

4. The structure is designed to be durable and long-lasting, and it is designed to be easy to maintain. It is designed to be easy to assemble and disassemble, and it is designed to be portable and easy to move.

5. The structure is designed to be easy to assemble and disassemble, and it is designed to be portable and easy to move. It is designed to be durable and long-lasting, and it is designed to be easy to maintain.

6. The structure is designed to be durable and long-lasting, and it is designed to be easy to maintain. It is designed to be easy to assemble and disassemble, and it is designed to be portable and easy to move.

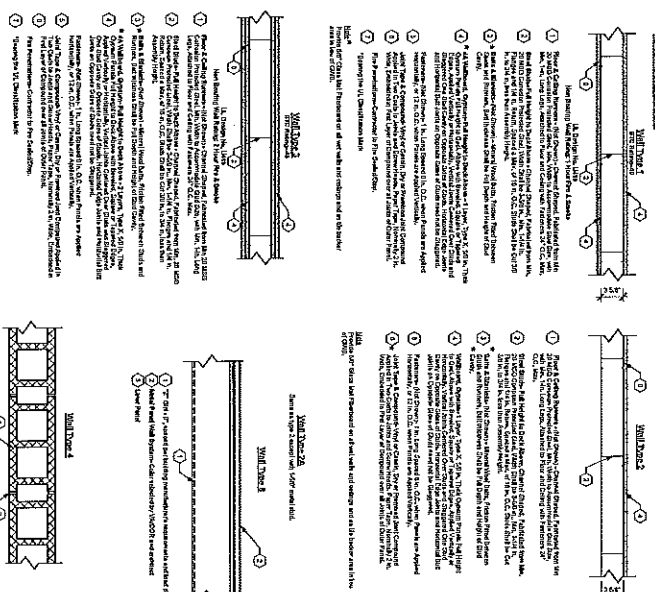
7. The structure is designed to be easy to assemble and disassemble, and it is designed to be portable and easy to move. It is designed to be durable and long-lasting, and it is designed to be easy to maintain.

8. The structure is designed to be durable and long-lasting, and it is designed to be easy to maintain. It is designed to be easy to assemble and disassemble, and it is designed to be portable and easy to move.

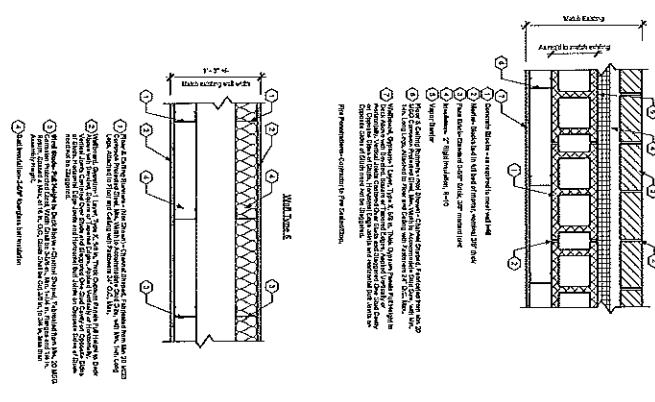
9. The structure is designed to be easy to assemble and disassemble, and it is designed to be portable and easy to move. It is designed to be durable and long-lasting, and it is designed to be easy to maintain.

10. The structure is designed to be durable and long-lasting, and it is designed to be easy to maintain. It is designed to be easy to assemble and disassemble, and it is designed to be portable and easy to move.

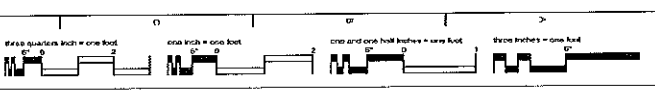
## **Partition Types**



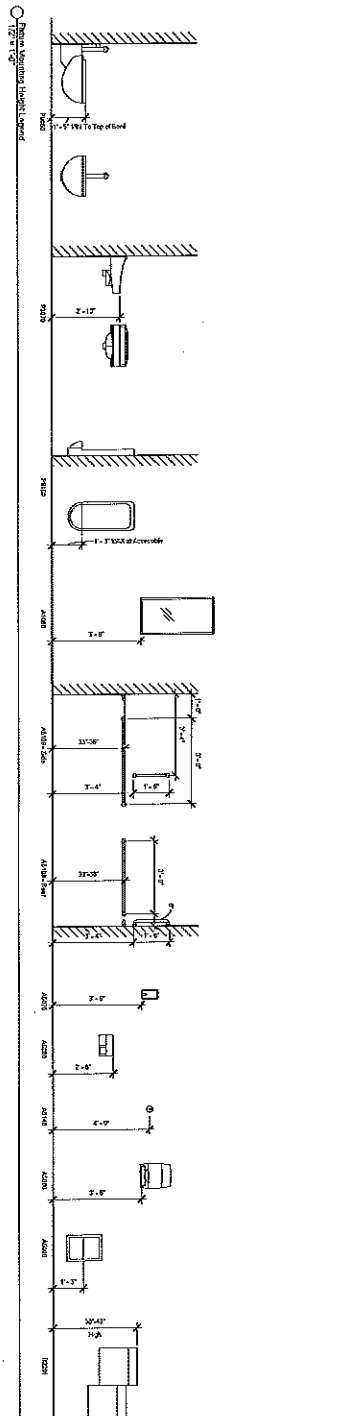
## **WALL TYPE 1**



## **WALL TYPE 2**



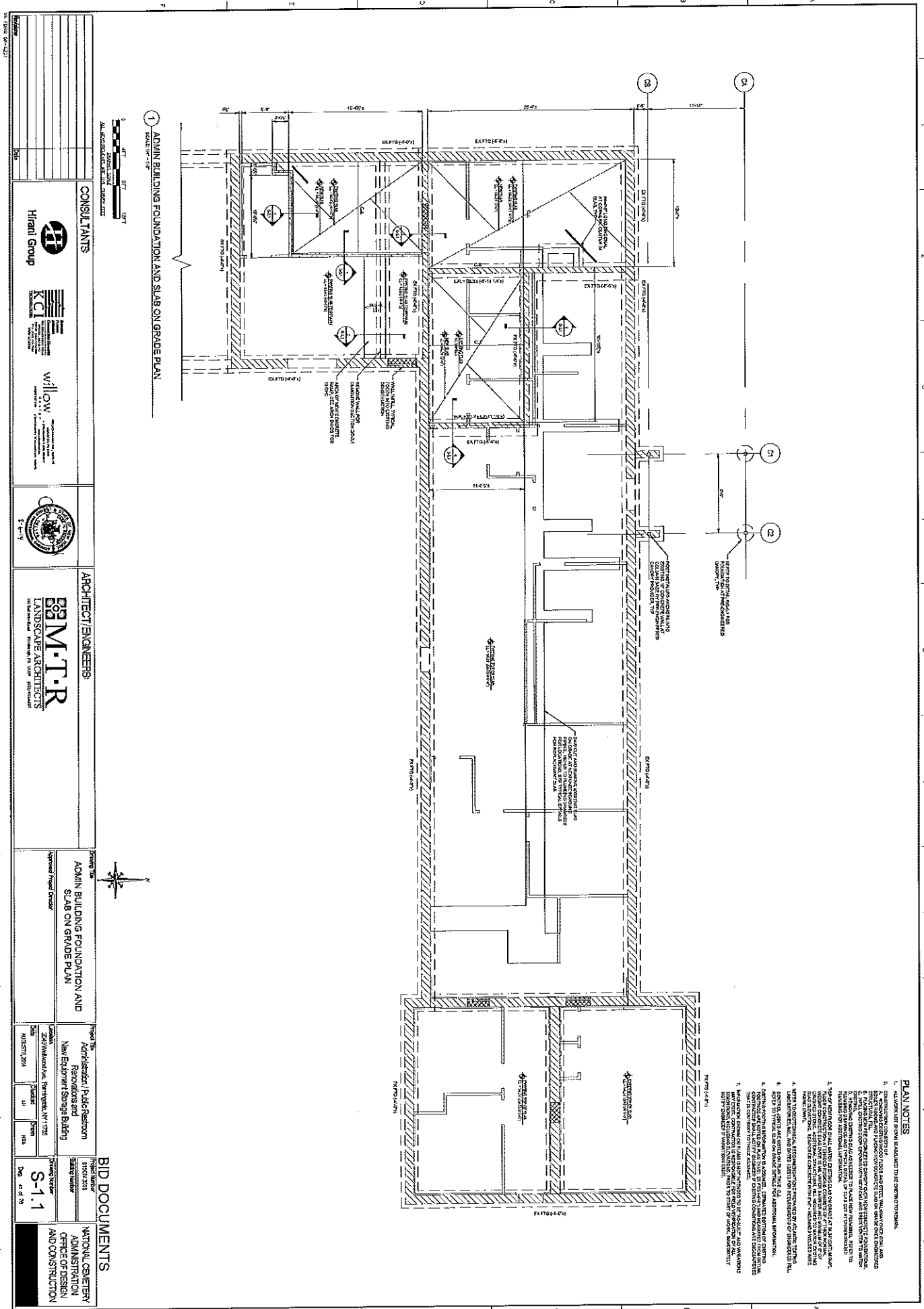
CLIMBOUT II Assembly - Rev. 1/2001



## **BID DOCUMENTS**

CONSULTANTS				ARCHITECTS/ENGINEERS			
Hill Group KCI willow				B.M.T.R. LANDSCAPE ARCHITECTS B.M.T.R. LANDSCAPE ARCHITECTS			
<b>Legends and Details</b> Project Title: Administration / Public Restroom New Equipment Storage Building 2000 Newburg Ave., Farmingdale, NY 11735 Project Number: A-6-2 Date: 1/2001				<b>Legends and Details</b> Project Title: Administration / Public Restroom New Equipment Storage Building 2000 Newburg Ave., Farmingdale, NY 11735 Project Number: A-6-2 Date: 1/2001			





1 ADMIN BUILDING FOUNDATION AND SLAB ON GRADE PLAN  
SCALE 1/8" = 1'-0"

CONSULTANTS

Hill Group  
KCI  
willow

ARCHITECT/ENGINEERS

MMT-R  
LANDSCAPE ARCHITECTS

ADMIN BUILDING FOUNDATION AND SLAB ON GRADE PLAN

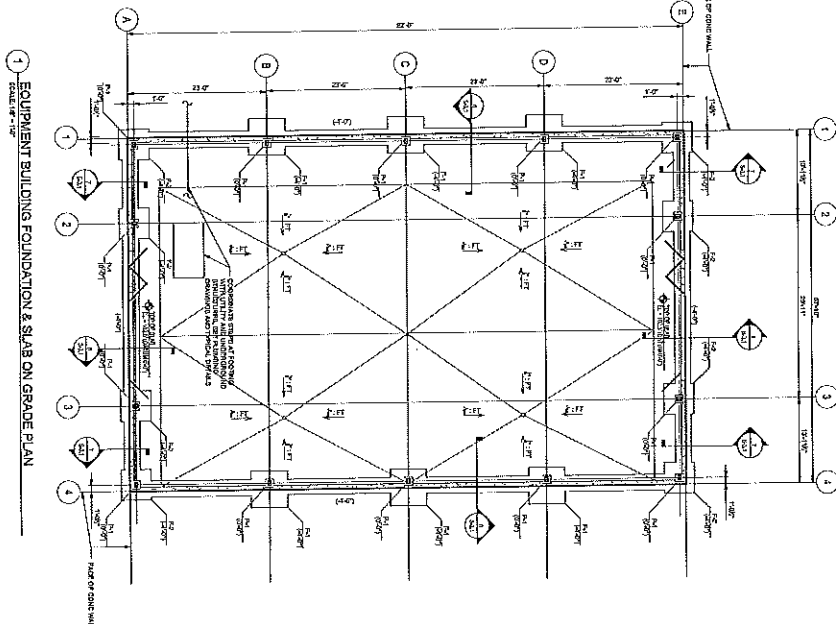
Approved Project Director

BID DOCUMENTS

ADMINISTRATIVE  
OFFICE OF DESIGN  
AND CONSTRUCTION

# PLAN NOTES

1. ALL WORK SHOWN IS ASSUMED TO BE EXISTING UNLESS NOTED OTHERWISE.
2. FOUNDATION SHALL BE CONSTRUCTED IN ACCORDANCE WITH THE LATEST EDITION OF THE INTERNATIONAL BUILDING CODE (IBC) AND THE LATEST EDITION OF THE ACI 318 CODE OF PRACTICE FOR CONCRETE.
3. ALL FOUNDATION SHALL BE CONSTRUCTED IN ACCORDANCE WITH THE LATEST EDITION OF THE ACI 318 CODE OF PRACTICE FOR CONCRETE.
4. ALL FOUNDATION SHALL BE CONSTRUCTED IN ACCORDANCE WITH THE LATEST EDITION OF THE ACI 318 CODE OF PRACTICE FOR CONCRETE.
5. ALL FOUNDATION SHALL BE CONSTRUCTED IN ACCORDANCE WITH THE LATEST EDITION OF THE ACI 318 CODE OF PRACTICE FOR CONCRETE.
6. ALL FOUNDATION SHALL BE CONSTRUCTED IN ACCORDANCE WITH THE LATEST EDITION OF THE ACI 318 CODE OF PRACTICE FOR CONCRETE.
7. ALL FOUNDATION SHALL BE CONSTRUCTED IN ACCORDANCE WITH THE LATEST EDITION OF THE ACI 318 CODE OF PRACTICE FOR CONCRETE.
8. ALL FOUNDATION SHALL BE CONSTRUCTED IN ACCORDANCE WITH THE LATEST EDITION OF THE ACI 318 CODE OF PRACTICE FOR CONCRETE.
9. ALL FOUNDATION SHALL BE CONSTRUCTED IN ACCORDANCE WITH THE LATEST EDITION OF THE ACI 318 CODE OF PRACTICE FOR CONCRETE.
10. ALL FOUNDATION SHALL BE CONSTRUCTED IN ACCORDANCE WITH THE LATEST EDITION OF THE ACI 318 CODE OF PRACTICE FOR CONCRETE.



- [illegible]

### PLAN NOTES

FOUNDATION SCHEDULE (3000 PSI ALLOWABLE SOILBORN PRESSURE)			DESIGN SERVICE LOADS		
MARK	FOOTING SIZE	REINFORCING	VERTICAL (KIP)	HORIZONTAL (KIP)	
			UP/DOWN	MIN/MPX	MAX
F-1	6'-0" x 6'-0" x 1'-0"	BAR #4, TOP & BOTTOM	31.0	1.5	7.5
F-2	2'-0" x 6'-0" x 1'-0"	BAR #4, TOP & BOTTOM	10.0	4.5	2.0

PIER SCHEDULE			
MARK	SIZE	PIER REINFORCING	TIES
101	20" X 16"	4#5	#3 16"

0 BE 20PT 24FS  
CLINIC STAFF  
ALL WORKING DAYS, 8:00 AM - 5:00 PM

## CONSULTANTS:

[illegible]

1

ARCHITECT/ENGINEERS:

EQUIPMENT BUILDING FOUNDATION

Administration / Public Restroom  
Renovations and

81601M 2018

ADMINISTRATION

fort  
18  
JH  
Sta ric

1000

8

## CULTANTS

1

1

---

1

8. *Journal of the American Medical Association*, 2000; 284: 1361-1366.

APFC

## ACT/ENGINE

MS:

**Figure 1**

1

EQUIP

## ENT BUILD

**FOUNDATIONS**

20

Renovations and

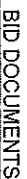
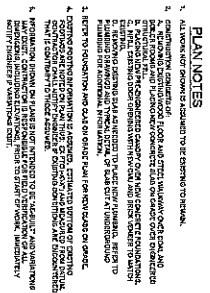
from

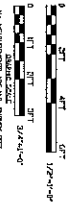
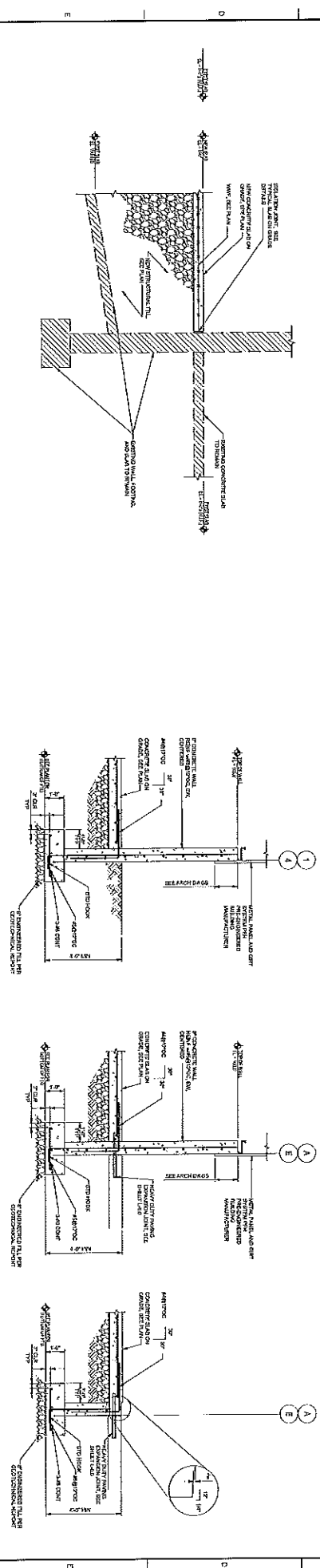
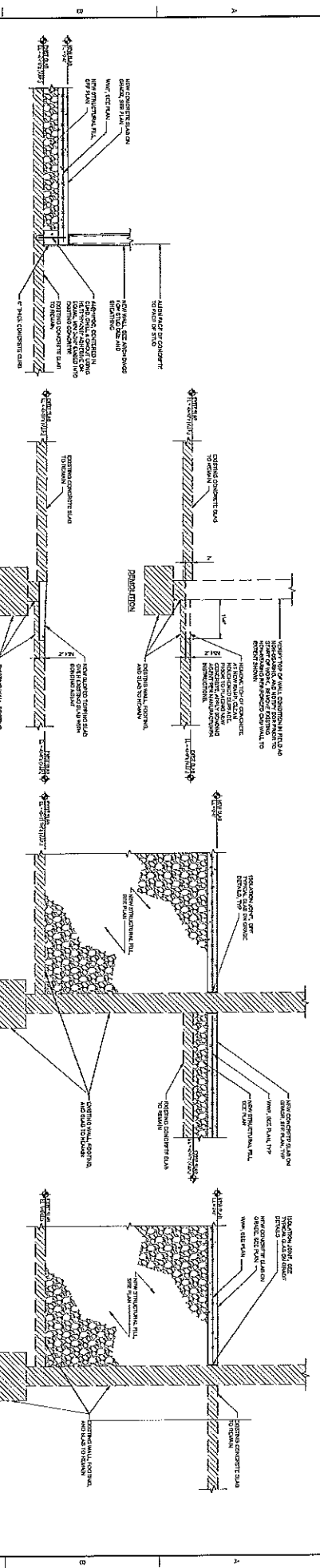
920

ADMINISTRATIVE

16

1000

[illegible]



CONSULTANTS



Hiram Group



willow

ARCHITECT/ENGINEERS



SOM-T.R LANDSCAPE ARCHITECTS

SECTIONS

Admin Building / Public Restroom

Admin Building / Public Restroom

BID DOCUMENTS

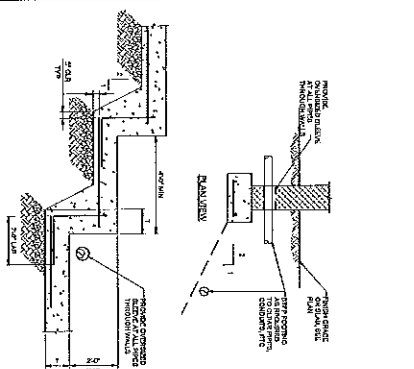
NATIONAL CENTER

ADMINISTRATION

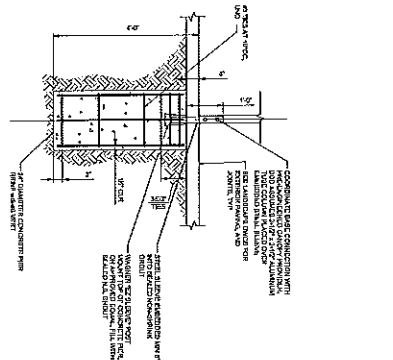
OFFICE OF DESIGN

AND CONSTRUCTION

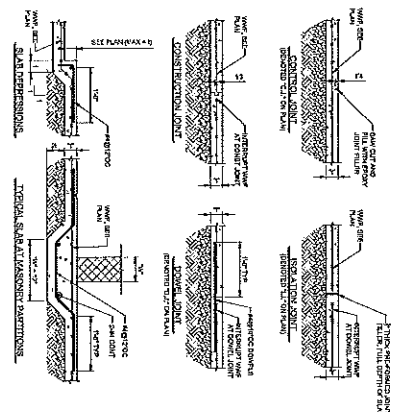




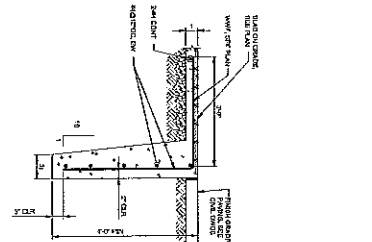
**TYPICAL STEPPED FOOTING**  
NOT TO SCALE



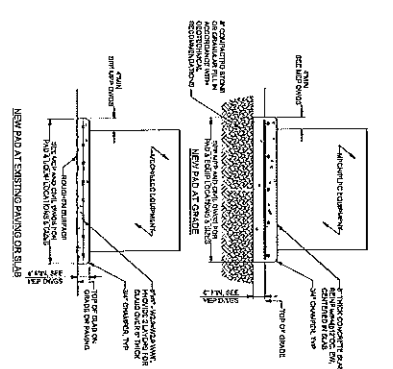
**B** TYPICAL PIER FOOTING AT CANOPY  
NOT TO SCALE



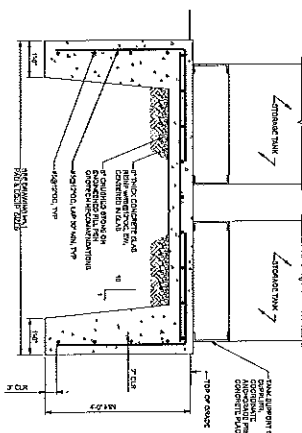
**D** TYPICAL INTERIOR SLAB ON GRADE DETAILS  
NOT TO SCALE



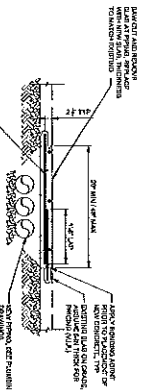
**E** TYPICAL TURN DOWN SLAB ...  
NOT TO SCALE



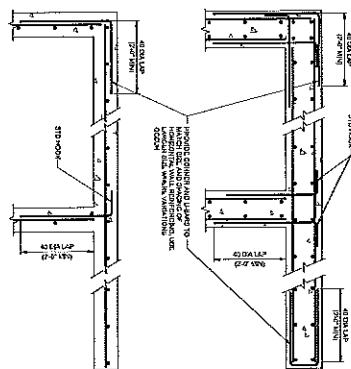
NOT TO SCALE



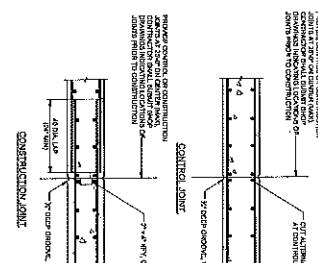
6 TYPICAL STORAGE TANK PAD  
NOT TO SCALE



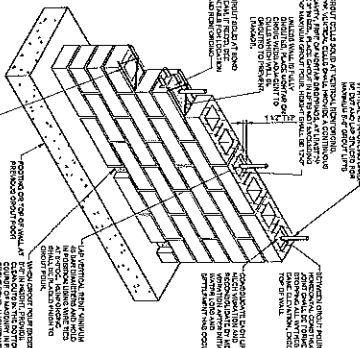
H TYPICAL SLAB CUT AT UNDERGROUND PIPING  
NOT TO SCALE



9 TYPICAL CONCRETE WALL CORNER AND END REINFORCING



**TYPICAL CONCRETE WALL JOINTS**

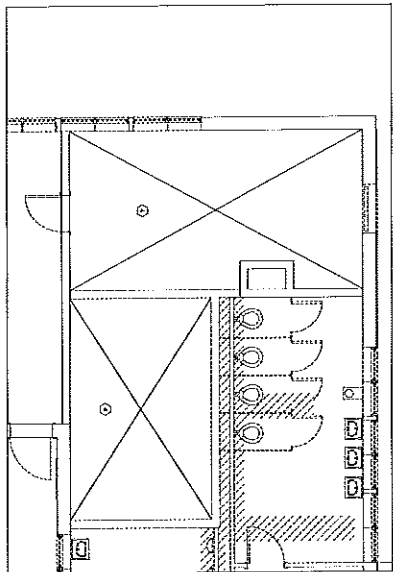


**TYPICAL CMU CONSTRUCTION**

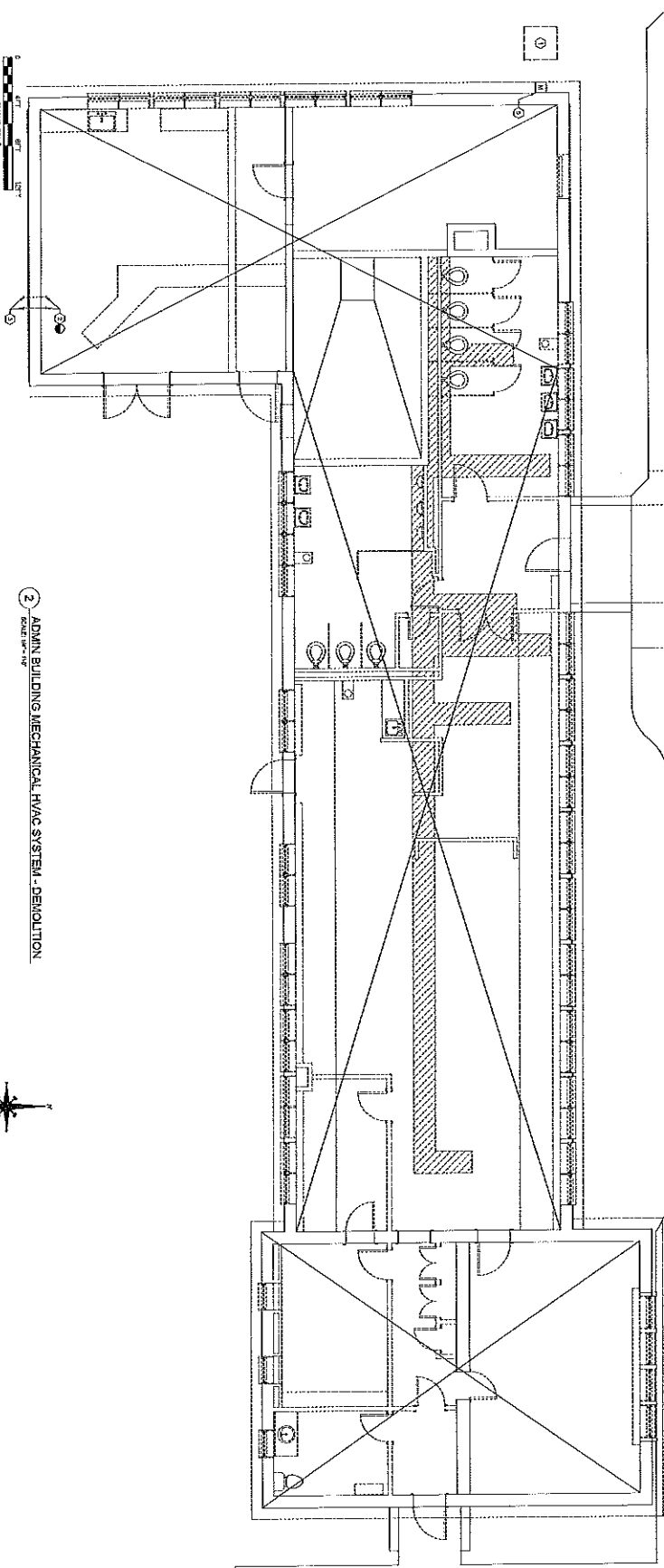
[illegible]



[illegible]



1 ADMIN BUILDING BASEMENT LEVEL MECHANICAL HVAC SYSTEM - DEMOLITION



2 ADMIN BUILDING MECHANICAL HVAC SYSTEM - DEMOLITION

- KEYED NOTES**
1. REMOVE EXISTING MECHANICAL HVAC SYSTEM AND ALL ASSOCIATED PIPING AND DUCTWORK.
  2. REPAIR AND PATCH UP ANY DAMAGE TO CONCRETE AND MASONRY SURFACES.
  3. REMOVE EXISTING MECHANICAL HVAC SYSTEM AND ALL ASSOCIATED PIPING AND DUCTWORK.
  4. REMOVE EXISTING MECHANICAL HVAC SYSTEM AND ALL ASSOCIATED PIPING AND DUCTWORK.
  5. REMOVE EXISTING MECHANICAL HVAC SYSTEM AND ALL ASSOCIATED PIPING AND DUCTWORK.
  6. REMOVE EXISTING MECHANICAL HVAC SYSTEM AND ALL ASSOCIATED PIPING AND DUCTWORK.
  7. REMOVE EXISTING MECHANICAL HVAC SYSTEM AND ALL ASSOCIATED PIPING AND DUCTWORK.
- GENERAL NOTES**
1. SEE GENERAL NOTES TO THE PROJECT FOR ADDITIONAL INFORMATION.
  2. UNLESS OTHERWISE SPECIFIED, THE CONTRACTOR SHALL REMOVE ALL EXISTING MECHANICAL HVAC SYSTEM AND ALL ASSOCIATED PIPING AND DUCTWORK.
  3. ALL DEMOLITION SHALL BE DONE IN ACCORDANCE WITH THE CITY OF CHICAGO DEPARTMENT OF PUBLIC WORKS AND ENGINEERING DIVISION.

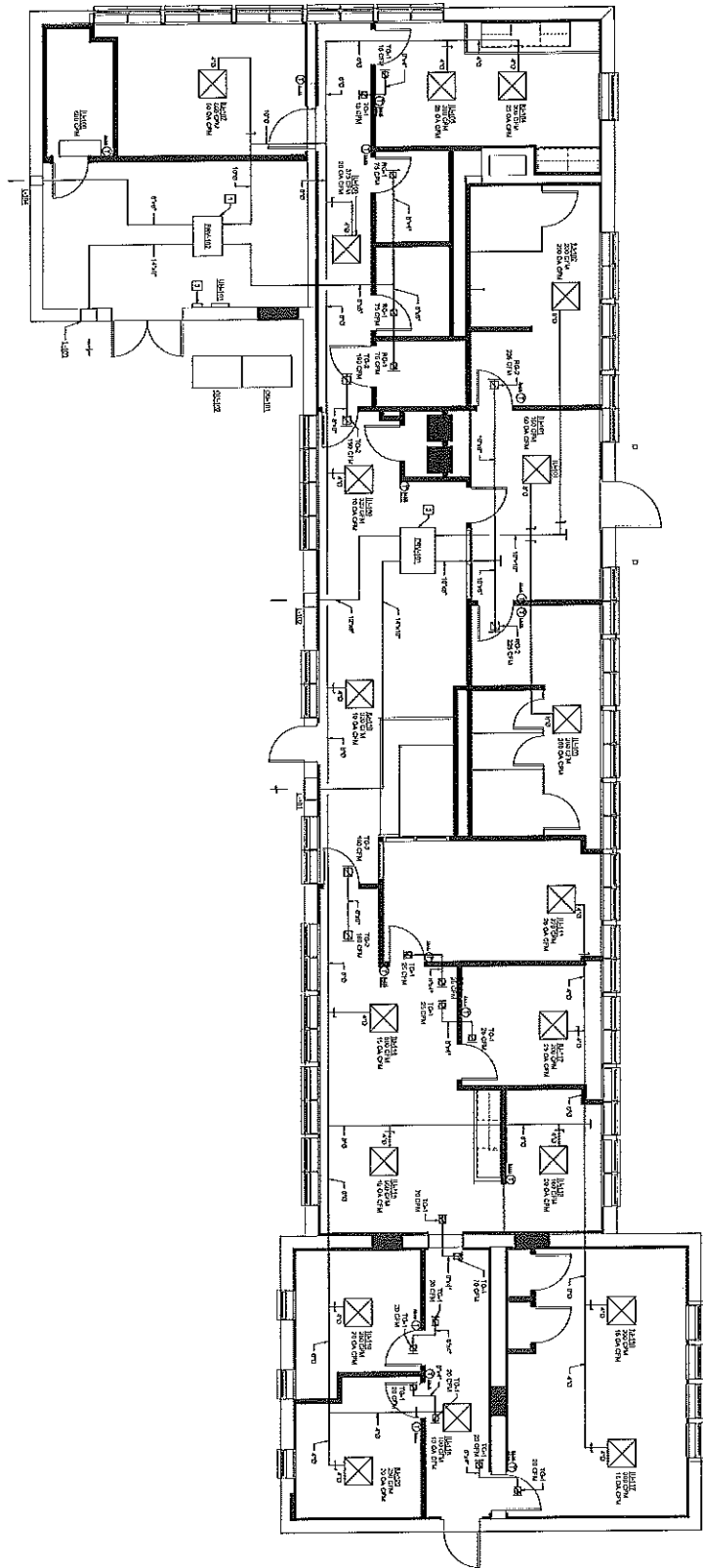
CONSULTANTS		ARCHITECT/ENGINEERS		ADMIN BUILDING MECHANICAL HVAC SYSTEM - DEMOLITION		PROJECT INFO		BID DOCUMENTS	
Hirani Group KCI willow M.T.R. LANDSCAPE ARCHITECTS		M.T.R. LANDSCAPE ARCHITECTS 1000 N. LAKE STREET, SUITE 1000 CHICAGO, IL 60610		ADMIN BUILDING MECHANICAL HVAC SYSTEM - DEMOLITION 200 N. LAKE STREET, SUITE 1000 CHICAGO, IL 60610		PROJECT NO. 1000 200 N. LAKE STREET, SUITE 1000 CHICAGO, IL 60610		BID NO. 1000 200 N. LAKE STREET, SUITE 1000 CHICAGO, IL 60610	
Hirani Group KCI willow M.T.R. LANDSCAPE ARCHITECTS		M.T.R. LANDSCAPE ARCHITECTS 1000 N. LAKE STREET, SUITE 1000 CHICAGO, IL 60610		ADMIN BUILDING MECHANICAL HVAC SYSTEM - DEMOLITION 200 N. LAKE STREET, SUITE 1000 CHICAGO, IL 60610		PROJECT NO. 1000 200 N. LAKE STREET, SUITE 1000 CHICAGO, IL 60610		BID NO. 1000 200 N. LAKE STREET, SUITE 1000 CHICAGO, IL 60610	

**KEYED NOTES**

1. DISCHARGE EXHAUSTION ROOF FROM ROOM 2200A  
 2. DISCHARGE EXHAUSTION ROOF FROM ROOM 2200B  
 3. DISCHARGE EXHAUSTION ROOF FROM ROOM 2200C  
 4. DISCHARGE EXHAUSTION ROOF FROM ROOM 2200D  
 5. DISCHARGE EXHAUSTION ROOF FROM ROOM 2200E  
 6. DISCHARGE EXHAUSTION ROOF FROM ROOM 2200F  
 7. DISCHARGE EXHAUSTION ROOF FROM ROOM 2200G  
 8. DISCHARGE EXHAUSTION ROOF FROM ROOM 2200H  
 9. DISCHARGE EXHAUSTION ROOF FROM ROOM 2200I  
 10. DISCHARGE EXHAUSTION ROOF FROM ROOM 2200J  
 11. DISCHARGE EXHAUSTION ROOF FROM ROOM 2200K  
 12. DISCHARGE EXHAUSTION ROOF FROM ROOM 2200L  
 13. DISCHARGE EXHAUSTION ROOF FROM ROOM 2200M  
 14. DISCHARGE EXHAUSTION ROOF FROM ROOM 2200N  
 15. DISCHARGE EXHAUSTION ROOF FROM ROOM 2200O  
 16. DISCHARGE EXHAUSTION ROOF FROM ROOM 2200P  
 17. DISCHARGE EXHAUSTION ROOF FROM ROOM 2200Q  
 18. DISCHARGE EXHAUSTION ROOF FROM ROOM 2200R  
 19. DISCHARGE EXHAUSTION ROOF FROM ROOM 2200S  
 20. DISCHARGE EXHAUSTION ROOF FROM ROOM 2200T  
 21. DISCHARGE EXHAUSTION ROOF FROM ROOM 2200U  
 22. DISCHARGE EXHAUSTION ROOF FROM ROOM 2200V  
 23. DISCHARGE EXHAUSTION ROOF FROM ROOM 2200W  
 24. DISCHARGE EXHAUSTION ROOF FROM ROOM 2200X  
 25. DISCHARGE EXHAUSTION ROOF FROM ROOM 2200Y  
 26. DISCHARGE EXHAUSTION ROOF FROM ROOM 2200Z

**GENERAL NOTES**

1. DISCHARGE EXHAUSTION ROOF FROM ROOM 2200A  
 2. DISCHARGE EXHAUSTION ROOF FROM ROOM 2200B  
 3. DISCHARGE EXHAUSTION ROOF FROM ROOM 2200C  
 4. DISCHARGE EXHAUSTION ROOF FROM ROOM 2200D  
 5. DISCHARGE EXHAUSTION ROOF FROM ROOM 2200E  
 6. DISCHARGE EXHAUSTION ROOF FROM ROOM 2200F  
 7. DISCHARGE EXHAUSTION ROOF FROM ROOM 2200G  
 8. DISCHARGE EXHAUSTION ROOF FROM ROOM 2200H  
 9. DISCHARGE EXHAUSTION ROOF FROM ROOM 2200I  
 10. DISCHARGE EXHAUSTION ROOF FROM ROOM 2200J  
 11. DISCHARGE EXHAUSTION ROOF FROM ROOM 2200K  
 12. DISCHARGE EXHAUSTION ROOF FROM ROOM 2200L  
 13. DISCHARGE EXHAUSTION ROOF FROM ROOM 2200M  
 14. DISCHARGE EXHAUSTION ROOF FROM ROOM 2200N  
 15. DISCHARGE EXHAUSTION ROOF FROM ROOM 2200O  
 16. DISCHARGE EXHAUSTION ROOF FROM ROOM 2200P  
 17. DISCHARGE EXHAUSTION ROOF FROM ROOM 2200Q  
 18. DISCHARGE EXHAUSTION ROOF FROM ROOM 2200R  
 19. DISCHARGE EXHAUSTION ROOF FROM ROOM 2200S  
 20. DISCHARGE EXHAUSTION ROOF FROM ROOM 2200T  
 21. DISCHARGE EXHAUSTION ROOF FROM ROOM 2200U  
 22. DISCHARGE EXHAUSTION ROOF FROM ROOM 2200V  
 23. DISCHARGE EXHAUSTION ROOF FROM ROOM 2200W  
 24. DISCHARGE EXHAUSTION ROOF FROM ROOM 2200X  
 25. DISCHARGE EXHAUSTION ROOF FROM ROOM 2200Y  
 26. DISCHARGE EXHAUSTION ROOF FROM ROOM 2200Z

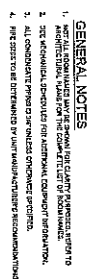


1 ADMIN BUILDING MECHANICAL HVAC FLOOR PLAN - NEW WORK

0' 1' 2' 3' 4' 5' 6' 7' 8' 9' 10'



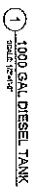
<b>CONSULTANTS</b> Hiran Group KCI Willow M.T.R.		<b>ARCHITECT/ENGINEERS</b> M.T.R. LANDSCAPE ARCHITECTS 100 West 17th Street, New York, NY 10011		<b>BID DOCUMENTS</b> ADMIN BUILDING MECHANICAL HVAC FLOOR PLAN - NEW WORK ADMINISTRATION / Public Relations New York City Storage Building 300 West 17th Street, New York, NY 10011 AUGUST 2011 H-2.1 OFFICE OF DESIGN AND CONSTRUCTION	
--------------------------------------------------------------	--	----------------------------------------------------------------------------------------------------------	--	-----------------------------------------------------------------------------------------------------------------------------------------------------------------------------------------------------------------------------------------------------------------	--



## AND CONSTRUCTION

gng, mea = one foot      one quarter inch = one foot      Every eighth inch = one foot      one half inch = one foot      three quarters inch = one foot      one inch = one foot





1	2	3	4	5	6	7	8	9	10	11	12	13	14	15	16	17	18	19	20	21	22	23	24	25	26	27	28	29	30	31	32	33	34	35	36	37	38	39	40	41	42	43	44	45	46	47	48	49	50	51	52	53	54	55	56	57	58	59	60	61	62	63	64	65	66	67	68	69	70	71	72	73	74	75	76	77	78	79	80	81	82	83	84	85	86	87	88	89	90	91	92	93	94	95	96	97	98	99	100	101	102	103	104	105	106	107	108	109	110	111	112	113	114	115	116	117	118	119	120	121	122	123	124	125	126	127	128	129	130	131	132	133	134	135	136	137	138	139	140	141	142	143	144	145	146	147	148	149	150	151	152	153	154	155	156	157	158	159	160	161	162	163	164	165	166	167	168	169	170	171	172	173	174	175	176	177	178	179	180	181	182	183	184	185	186	187	188	189	190	191	192	193	194	195	196	197	198	199	200	201	202	203	204	205	206	207	208	209	210	211	212	213	214	215	216	217	218	219	220	221	222	223	224	225	226	227	228	229	230	231	232	233	234	235	236	237	238	239	240	241	242	243	244	245	246	247	248	249	250	251	252	253	254	255	256	257	258	259	260	261	262	263	264	265	266	267	268	269	270	271	272	273	274	275	276	277	278	279	280	281	282	283	284	285	286	287	288	289	290	291	292	293	294	295	296	297	298	299	300	301	302	303	304	305	306	307	308	309	310	311	312	313	314	315	316	317	318	319	320	321	322	323	324	325	326	327	328	329	330	331	332	333	334	335	336	337	338	339	340	341	342	343	344	345	346	347	348	349	350	351	352	353	354	355	356	357	358	359	360	361	362	363	364	365	366	367	368	369	370	371	372	373	374	375	376	377	378	379	380	381	382	383	384	385	386	387	388	389	390	391	392	393	394	395	396	397	398	399	400	401	402	403	404	405	406	407	408	409	410	411	412	413	414	415	416	417	418	419	420	421	422	423	424	425	426	427	428	429	430	431	432	433	434	435	436	437	438	439	440	441	442	443	444	445	446	447	448	449	450	451	452	453	454	455	456	457	458	459	460	461	462	463	464	465	466
---	---	---	---	---	---	---	---	---	----	----	----	----	----	----	----	----	----	----	----	----	----	----	----	----	----	----	----	----	----	----	----	----	----	----	----	----	----	----	----	----	----	----	----	----	----	----	----	----	----	----	----	----	----	----	----	----	----	----	----	----	----	----	----	----	----	----	----	----	----	----	----	----	----	----	----	----	----	----	----	----	----	----	----	----	----	----	----	----	----	----	----	----	----	----	----	----	----	----	-----	-----	-----	-----	-----	-----	-----	-----	-----	-----	-----	-----	-----	-----	-----	-----	-----	-----	-----	-----	-----	-----	-----	-----	-----	-----	-----	-----	-----	-----	-----	-----	-----	-----	-----	-----	-----	-----	-----	-----	-----	-----	-----	-----	-----	-----	-----	-----	-----	-----	-----	-----	-----	-----	-----	-----	-----	-----	-----	-----	-----	-----	-----	-----	-----	-----	-----	-----	-----	-----	-----	-----	-----	-----	-----	-----	-----	-----	-----	-----	-----	-----	-----	-----	-----	-----	-----	-----	-----	-----	-----	-----	-----	-----	-----	-----	-----	-----	-----	-----	-----	-----	-----	-----	-----	-----	-----	-----	-----	-----	-----	-----	-----	-----	-----	-----	-----	-----	-----	-----	-----	-----	-----	-----	-----	-----	-----	-----	-----	-----	-----	-----	-----	-----	-----	-----	-----	-----	-----	-----	-----	-----	-----	-----	-----	-----	-----	-----	-----	-----	-----	-----	-----	-----	-----	-----	-----	-----	-----	-----	-----	-----	-----	-----	-----	-----	-----	-----	-----	-----	-----	-----	-----	-----	-----	-----	-----	-----	-----	-----	-----	-----	-----	-----	-----	-----	-----	-----	-----	-----	-----	-----	-----	-----	-----	-----	-----	-----	-----	-----	-----	-----	-----	-----	-----	-----	-----	-----	-----	-----	-----	-----	-----	-----	-----	-----	-----	-----	-----	-----	-----	-----	-----	-----	-----	-----	-----	-----	-----	-----	-----	-----	-----	-----	-----	-----	-----	-----	-----	-----	-----	-----	-----	-----	-----	-----	-----	-----	-----	-----	-----	-----	-----	-----	-----	-----	-----	-----	-----	-----	-----	-----	-----	-----	-----	-----	-----	-----	-----	-----	-----	-----	-----	-----	-----	-----	-----	-----	-----	-----	-----	-----	-----	-----	-----	-----	-----	-----	-----	-----	-----	-----	-----	-----	-----	-----	-----	-----	-----	-----	-----	-----	-----	-----	-----	-----	-----	-----	-----	-----	-----	-----	-----	-----	-----	-----	-----	-----	-----	-----	-----	-----	-----	-----	-----	-----	-----	-----	-----	-----	-----	-----	-----	-----	-----	-----	-----	-----	-----	-----	-----	-----	-----	-----	-----	-----	-----	-----	-----	-----	-----	-----	-----	-----	-----	-----	-----	-----	-----	-----	-----	-----	-----	-----	-----	-----	-----

### III

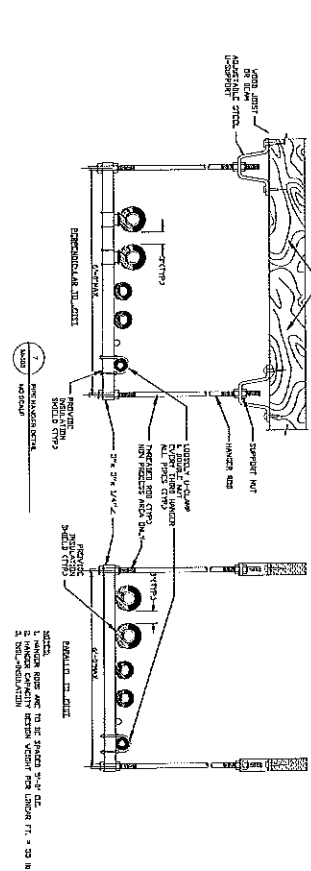
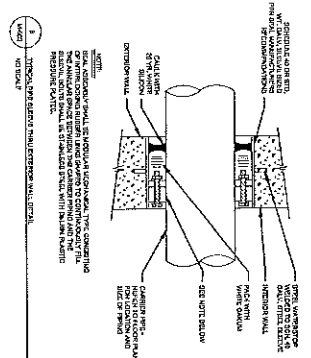
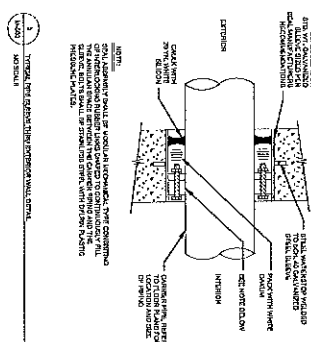
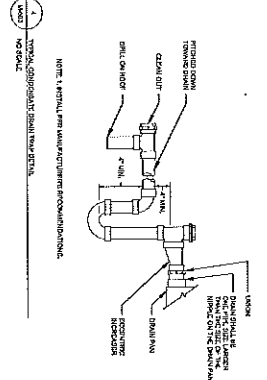
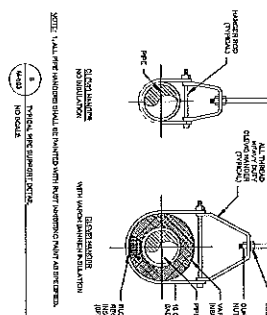
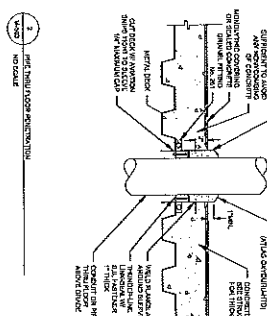
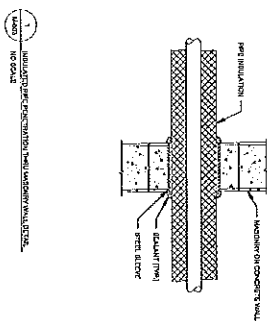
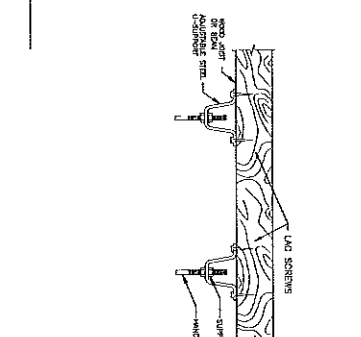
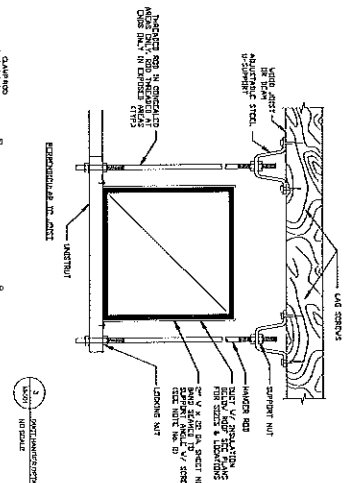
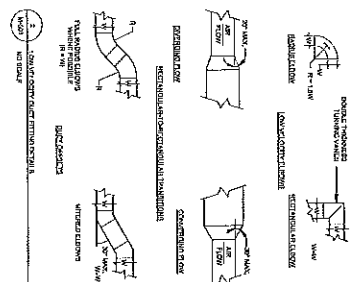
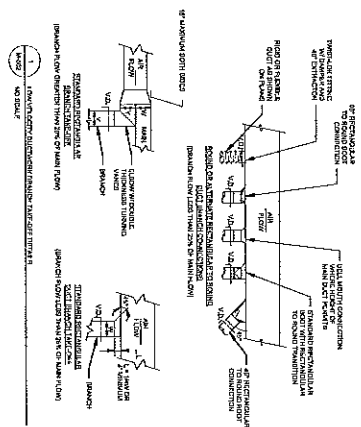
1. REFER TO SPECIFICATION SECTION 23 13 23 FOR DETAILED INFORMATION REGARDING INSTALLATION OF NEW TANKAGE SYSTEMS.

- [illegible]



### 3 TANK FIELD LAYOUT DETAIL

1000



<div>CONSULTANTS</div> <div><div><div>Hiran Group</div></div><div><div>KCI</div></div><div><div>willow</div></div></div>		<div>ARCHITECTS/ENGINEERS</div> <div><div>EEM-M-T-R</div></div> <div><div>LANDSCAPE ARCHITECTS</div></div>	
<div>MECHANICAL DETAILS</div>		<div>Project Name</div> <div>Adminstration / Plant Room</div>	
<div>Approved Project Director</div> <div>New Eastpoint Storage Building</div>		<div>Project Number</div> <div>H-5-2</div>	
<div>Design</div> <div>2001 Woodward Ave, Ferryville, NY 11735</div>		<div>Contract</div> <div>NY</div>	
<div>Approved</div> <div>161 Robinson Road, Singapore 110119 (0673) 3343331</div>		<div>Approved</div> <div>161 Robinson Road, Singapore 110119 (0673) 3343331</div>	
<div>Design</div> <div>2001 Woodward Ave, Ferryville, NY 11735</div>		<div>Contract</div> <div>NY</div>	
<div>Approved</div> <div>161 Robinson Road, Singapore 110119 (0673) 3343331</div>		<div>Approved</div> <div>161 Robinson Road, Singapore 110119 (0673) 3343331</div>	
<div>Design</div> <div>2001 Woodward Ave, Ferryville, NY 11735</div>		<div>Contract</div> <div>NY</div>	
<div>Approved</div> <div>161 Robinson Road, Singapore 110119 (0673) 3343331</div>		<div>Approved</div> <div>161 Robinson Road, Singapore 110119 (0673) 3343331</div>	
<div>Design</div> <div>2001 Woodward Ave, Ferryville, NY 11735</div>		<div>Contract</div> <div>NY</div>	
<div>Approved</div> <div>161 Robinson Road, Singapore 110119 (0673) 3343331</div>		<div>Approved</div> <div>161 Robinson Road, Singapore 110119 (0673) 3343331</div>	
<div>Design</div> <div>2001 Woodward Ave, Ferryville, NY 11735</div>		<div>Contract</div> <div>NY</div>	
<div>Approved</div> <div>161 Robinson Road, Singapore 110119 (0673) 3343331</div>		<div>Approved</div> <div>161 Robinson Road, Singapore 110119 (0673) 3343331</div>	
<div>Design</div> <div>2001 Woodward Ave, Ferryville, NY 11735</div>		<div>Contract</div> <div>NY</div>	
<div>Approved</div> <div>161 Robinson Road, Singapore 110119 (0673) 3343331</div>		<div>Approved</div> <div>161 Robinson Road, Singapore 110119 (0673) 3343331</div>	
<div>Design</div> <div>2001 Woodward Ave, Ferryville, NY 11735</div>		<div>Contract</div> <div>NY</div>	
<div>Approved</div> <div>161 Robinson Road, Singapore 110119 (0673) 3343331</div>		<div>Approved</div> <div>161 Robinson Road, Singapore 110119 (0673) 3343331</div>	
<div>Design</div> <div>2001 Woodward Ave, Ferryville, NY 11735</div>		<div>Contract</div> <div>NY</div>	
<div>Approved</div> <div>161 Robinson Road, Singapore 110119 (0673) 3343331</div>		<div>Approved</div> <div>161 Robinson Road, Singapore 110119 (0673) 3343331</div>	
<div>Design</div> <div>2001 Woodward Ave, Ferryville, NY 11735</div>		<div>Contract</div> <div>NY</div>	
<div>Approved</div> <div>161 Robinson Road, Singapore 110119 (0673) 3343331</div>		<div>Approved</div> <div>161 Robinson Road, Singapore 110119 (0673) 3343331</div>	
<div>Design</div> <div>2001 Woodward Ave, Ferryville, NY 11735</div>		<div>Contract</div> <div>NY</div>	
<div>Approved</div> <div>161 Robinson Road, Singapore 110119 (0673) 3343331</div>		<div>Approved</div> <div>161 Robinson Road, Singapore 110119 (0673) 3343331</div>	
<div>Design</div> <div>2001 Woodward Ave, Ferryville, NY 11735</div>		<div>Contract</div> <div>NY</div>	
<div>Approved</div> <div>161 Robinson Road, Singapore 110119 (0673) 3343331</div>		<div>Approved</div> <div>161 Robinson Road, Singapore 110119 (0673) 3343331</div>	
<div>Design</div> <div>2001 Woodward Ave, Ferryville, NY 11735</div>		<div>Contract</div> <div>NY</div>	
<div>Approved</div> <div>161 Robinson Road, Singapore 110119 (0673) 3343331</div>		<div>Approved</div> <div>161 Robinson Road, Singapore 110119 (0673) 3343331</div>	
<div>Design</div> <div>2001 Woodward Ave, Ferryville, NY 11735</div>		<div>Contract</div> <div>NY</div>	
<div>Approved</div> <div>161 Robinson Road, Singapore 110119 (0673) 3343331</div>		<div>Approved</div> <div>161 Robinson Road, Singapore 110119 (0673) 3343331</div>	
<div>Design</div> <div>2001 Woodward Ave, Ferryville, NY 11735</div>		<div>Contract</div> <div>NY</div>	
<div>Approved</div> <div>161 Robinson Road, Singapore 110119 (0673) 3343331</div>		<div>Approved</div> <div>161 Robinson Road, Singapore 110119 (0673) 3343331</div>	
<div>Design</div> <div>2001 Woodward Ave, Ferryville, NY 11735</div>		<div>Contract</div> <div>NY</div>	
<div>Approved</div> <div>161 Robinson Road, Singapore 110119 (0673) 3343331</div>		<div>Approved</div> <div>161 Robinson Road, Singapore 110119 (0673) 3343331</div>	
<div>Design</div> <div>2001 Woodward Ave, Ferryville, NY 11735</div>		<div>Contract</div> <div>NY</div>	
<div>Approved</div> <div>161 Robinson Road, Singapore 110119 (0673) 3343331</div>		<div>Approved</div> <div>161 Robinson Road, Singapore 110119 (0673) 3343331</div>	
<div>Design</div> <div>2001 Woodward Ave, Ferryville, NY 11735</div>		<div>Contract</div> <div>NY</div>	
<div>Approved</div> <div>161 Robinson Road, Singapore 110119 (0673) 3343331</div>		<div>Approved</div> <div>161 Robinson Road, Singapore 110119 (0673) 3343331</div>	
<div>Design</div> <div>2001 Woodward Ave, Ferryville, NY 11735</div>		<div>Contract</div> <div>NY</div>	
<div>Approved</div> <div>161 Robinson Road, Singapore 110119 (0673) 3343331</div>		<div>Approved</div> <div>161 Robinson Road, Singapore 110119 (0673) 3343331</div>	
<div>Design</div> <div>2001 Woodward Ave, Ferryville, NY 11735</div>		<div>Contract</div> <div>NY</div>	
<div>Approved</div> <div>161 Robinson Road, Singapore 110119 (0673) 3343331</div>		<div>Approved</div> <div>161 Robinson Road, Singapore 110119 (0673) 3343331</div>	
<div>Design</div> <div>2001 Woodward Ave, Ferryville, NY 11735</div>		<div>Contract</div> <div>NY</div>	
<div>Approved</div> <div>161 Robinson Road, Singapore 110119 (0673) 3343331</div>		<div>Approved</div> <div>161 Robinson Road, Singapore 110119 (0673) 3343331</div>	
<div>Design</div> <div>2001 Woodward Ave, Ferryville, NY 11735</div>		<div>Contract</div> <div>NY</div>	
<div>Approved</div> <div>161 Robinson Road, Singapore 110119 (0673) 3343331</div>		<div>Approved</div> <div>161 Robinson Road, Singapore 110119 (0673) 3343331</div>	
<div>Design</div> <div>2001 Woodward Ave, Ferryville, NY 11735</div>		<div>Contract</div> <div>NY</div>	
<div>Approved</div> <div>161 Robinson Road, Singapore 110119 (0673) 3343331</div>		<div>Approved</div> <div>161 Robinson Road, Singapore 110119 (0673) 3343331</div>	
<div>Design</div> <div>2001 Woodward Ave, Ferryville, NY 11735</div>		<div>Contract</div> <div>NY</div>	
<div>Approved</div> <div>161 Robinson Road, Singapore 110119 (0673) 3343331</div>		<div>Approved</div> <div>161 Robinson Road, Singapore 110119 (0673) 3343331</div>	
<div>Design</div> <div>2001 Woodward Ave, Ferryville, NY 11735</div>		<div>Contract</div> <div>NY</div>	
<div>Approved</div> <div>161 Robinson Road, Singapore 110119 (0673) 3343331</div>		<div>Approved</div> <div>161 Robinson Road, Singapore 110119 (0673) 3343331</div>	
<div>Design</div> <div>2001 Woodward Ave, Ferryville, NY 11735</div>		<div>Contract</div> <div>NY</div>	
<div>Approved</div> <div>161 Robinson Road, Singapore 110119 (0673) 3343331</div>		<div>Approved</div> <div>161 Robinson Road, Singapore 110119 (0673) 3343331</div>	
<div>Design</div> <div>2001 Woodward Ave, Ferryville, NY 11735</div>		<div>Contract</div> <div>NY</div>	
<div>Approved</div> <div>161 Robinson Road, Singapore 110119 (0673) 3343331</div>		<div>Approved</div> <div>161 Robinson Road, Singapore 110119 (0673) 3343331</div>	
<div>Design</div> <div>2001 Woodward Ave, Ferryville, NY 11735</div>		<div>Contract</div> <div>NY</div>	
<div>Approved</div> <div>161 Robinson Road, Singapore 110119 (0673) 3343331</div>		<div>Approved</div> <div>161 Robinson Road, Singapore 110119 (0673) 3343331</div>	
<div>Design</div> <div>2001 Woodward Ave, Ferryville, NY 11735</div>		<div>Contract</div> <div>NY</div>	
<div>Approved</div> <div>161 Robinson Road, Singapore 110119 (0673) 3343331</div>		<div>Approved</div> <div>161 Robinson Road, Singapore 110119 (0673) 3343331</div>	
<div>Design</div> <div>2001 Woodward Ave, Ferryville, NY 11735</div>		<div>Contract</div> <div>NY</div>	
<div>Approved</div> <div>161 Robinson Road, Singapore 110119 (0673) 3343331</div>		<div>Approved</div> <div>161 Robinson Road, Singapore 110119 (0673) 3343331</div>	
<div>Design</div> <div>2001 Woodward Ave, Ferryville, NY 11735</div>		<div>Contract</div> <div>NY</div>	
<div>Approved</div> <div>161 Robinson Road, Singapore 110119 (0673) 3343331</div>		<div>Approved</div> <div>161 Robinson Road, Singapore 110119 (0673) 3343331</div>	
<div>Design</div> <div>2001 Woodward Ave, Ferryville, NY 11735</div>		<div>Contract</div> <div>NY</div>	
<div>Approved</div> <div>161 Robinson Road, Singapore 110119 (0673) 3343331</div>		<div>Approved</div> <div>161 Robinson Road, Singapore 110119 (0673) 3343331</div>	
<div>Design</div> <div>2001 Woodward Ave, Ferryville, NY 11735</div>		<div>Contract</div> <div>NY</div>	
<div>Approved</div> <div>161 Robinson Road, Singapore 110119 (0673) 3343331</div>		<div>Approved</div> <div>161 Robinson Road, Singapore 110119 (0673) 3343331</div>	
<div>Design</div> <div>2001 Woodward Ave, Ferryville, NY 11735</div>		<div>Contract</div> <div>NY</div>	
<div>Approved</div> <div>161 Robinson Road, Singapore 110119 (0673) 3343331</div>		<div>Approved</div> <div>161 Robinson Road, Singapore 110119 (0673) 3343331</div>	
<div>Design</div> <div>2001 Woodward Ave, Ferryville, NY 11735</div>		<div>Contract</div> <div>NY</div>	
<div>Approved</div> <div>161 Robinson Road, Singapore 110119 (0673) 3343331</div>		<div>Approved</div> <div>161 Robinson Road, Singapore 110119 (0673) 3343331</div>	
<div>Design</div> <div>2001 Woodward Ave, Ferryville, NY 11735</div>		<div>Contract</div> <div>NY</div>	
<div>Approved</div> <div>161 Robinson Road, Singapore 110119 (0673) 3343331</div>		<div>Approved</div> <div>161 Robinson Road, Singapore 110119 (0673) 3343331</div>	
<div>Design</div> <div>2001 Woodward Ave, Ferryville, NY 11735</div>		<div>Contract</div> <div>NY</div>	
<div>Approved</div> <div>161 Robinson Road, Singapore 110119 (0673) 3343331</div>		<div>Approved</div> <div>161 Robinson Road, Singapore 110119 (0673) 3343331</div>	
<div>Design</div> <div>2001 Woodward Ave, Ferryville, NY 11735</div>		<div>Contract</div> <div>NY</div>	
<div>Approved</div> <div>161 Robinson Road, Singapore 110119 (0673) 3343331</div>		<div>Approved</div> <div>161 Robinson Road, Singapore 110119 (0673) 3343331</div>	
<div>Design</div> <div>2001 Woodward Ave, Ferryville, NY 11735</div>		<div>Contract</div> <div>NY</div>	
<div>Approved</div> <div>161 Robinson Road, Singapore 110119 (0673) 3343331</div>		<div>Approved</div> <div>161 Robinson Road, Singapore 110119 (0673) 3343331</div>	
<div>Design</div> <div>2001 Woodward Ave, Ferryville, NY 11735</div>		<div>Contract</div> <div>NY</div>	
<div>Approved</div> <div>161 Robinson Road, Singapore 110119 (0673) 3343331</div>		<div>Approved</div> <div>161 Robinson Road, Singapore 110119 (0673) 3343331</div>	
<div>Design</div> <div>2001 Woodward Ave, Ferryville, NY 11735</div>		<div>Contract</div> <div>NY</div>	
<div>Approved</div> <div>161 Robinson Road, Singapore 110119 (0673) 3343331</div>		<div>Approved</div> <div>161 Robinson Road, Singapore 110119 (0673) 3343331</div>	
<div>Design</div> <div>2001 Woodward Ave, Ferryville, NY 11735</div>		<div>Contract</div> <div>NY</div>	
<div>Approved</div> <div>161 Robinson Road, Singapore 110119 (0673) 3343331</div>		<div>Approved</div> <div>161 Robinson Road, Singapore 110119 (0673) 3343331</div>	
<div>Design</div> <div>2001 Woodward Ave, Ferryville, NY 11735</div>		<div>Contract</div> <div>NY</div>	
<div>Approved</div> <div>161 Robinson Road, Singapore 110119 (0673) 3343331</div>		<div>Approved</div> <div>161 Robinson Road, Singapore 110119 (0673) 3343331</div>	
<div>Design</div> <div>2001 Woodward Ave, Ferryville, NY 11735</div>		<div>Contract</div> <div>NY</div>	
<div>Approved</div> <div>161 Robinson Road, Singapore 110119 (0673) 3343331</div>		<div>Approved</div> <div>161 Robinson Road, Singapore 110119 (0673) 3343331</div>	
<div>Design</div> <div>2001 Woodward Ave, Ferryville, NY 11735</div>		<div>Contract</div> <div>NY</div>	
<div>Approved</div> <div>161 Robinson Road, Singapore 110119 (0673) 3343331</div>		<div>Approved</div> <div>161 Robinson Road, Singapore 110119 (0673) 3343331</div>	
<div>Design</div> <div>2001 Woodward Ave, Ferryville, NY 11735</div>		<div>Contract</div> <div>NY</div>	
<div>Approved</div> <div>161 Robinson Road, Singapore 110119 (0673) 3343331</div>		<div>Approved</div> <div>161 Robinson Road, Singapore 110119 (0673) 3343331</div>	
<div>Design</div> <div>2001 Woodward Ave, Ferryville, NY 11735</div>		<div>Contract</div> <div>NY</div>	
<div>Approved</div> <div>161 Robinson Road, Singapore 110119 (0673) 3343331</div>		<div>Approved</div> <div>161 Robinson Road, Singapore 110119 (0673) 3343331</div>	
<div>Design</div> <div>2001 Woodward Ave, Ferryville, NY 11735</div>		<div>Contract</div> <div>NY</div>	
<div>Approved</div> <div>161 Robinson Road, Singapore 110119 (0673) 3343331</div>		<div>Approved</div> <div>161 Robinson Road, Singapore 110119 (0673) 3343331</div>	
<div>Design</div> <div>2001 Woodward Ave, Ferryville, NY 11735</div>		<div>Contract</div> <div>NY</div>	
<div>Approved</div> <div>161 Robinson Road, Singapore 110119 (0673) 3343331</div>		<div>Approved</div> <div>161 Robinson Road, Singapore 110119 (0673) 3343331</div>	
<div>Design</div> <div>2001 Woodward Ave, Ferryville, NY 11735</div>		<div>Contract</div> <div>NY</div>	
<div>Approved</div> <div>161 Robinson Road, Singapore 110119 (0673) 3343331</div>		<div>Approved</div> <div>161 Robinson Road, Singapore 110119 (0673) 3343331</div>	
<div>Design</div> <div>2001 Woodward Ave, Ferryville, NY 11735</div>		<div>Contract</div> <div>NY</div>	
<div>Approved</div> <div>161 Robinson Road, Singapore 110119 (0673) 3343331</div>		<div>Approved</div> <div>161 Robinson Road, Singapore 110119 (0673) 3343331</div>	
<div>Design</div> <div>2001 Woodward Ave, Ferryville, NY 11735</div>		<div>Contract</div> <div>NY</div>	
<div>Approved</div> <div>161 Robinson Road, Singapore 110119 (0673) 3343331</div>		<div>Approved</div> <div>161 Robinson Road, Singapore 110119 (0673) 3343331</div>	
<div>Design</div> <div>2001 Woodward Ave, Ferryville, NY 11735</div>		<div>Contract</div> <div>NY</div>	
<div>Approved</div> <div>161 Robinson Road, Singapore 110119 (0673) 3343331</div>		<div>Approved</div> <div>161 Robinson Road, Singapore 110119 (0673) 3343331</div>	
<div>Design</div> <div>2001 Woodward Ave, Ferryville, NY 11735</div>		<div>Contract</div> <div>NY</div>	
<div>Approved</div> <div>161 Robinson Road, Singapore 110119 (0673) 3343331</div>		<div>Approved</div> <div>161 Robinson Road, Singapore 110119 (0673) 3343331</div>	
<div>Design</div> <div>2001 Woodward Ave, Ferryville, NY 11735</div>		<div>Contract</div> <div>NY</div>	
<div>Approved</div> <div>161 Robinson Road, Singapore 110119 (0673) 3343331</div>		<div>Approved</div> <div>161 Robinson Road, Singapore 110119 (0673) 3343331</div>	
<div>Design</div> <div>2001 Woodward Ave, Ferryville, NY 11735</div>		<div>Contract</div> <div>NY</div>	
<div>Approved</div> <div>161 Robinson Road, Singapore 110119 (0673) 3343331</div>		<div>Approved</div> <div>161 Robinson Road, Singapore 110119 (0673) 3343331</div>	
<div>Design</div> <div>2001 Woodward Ave, Ferryville, NY 11735</div>		<div>Contract</div> <div>NY</div>	
<div>Approved</div> <div>161 Robinson Road, Singapore 110119 (0673) 3343331</div>		<div>Approved</div> <div>161 Robinson Road, Singapore 110119 (0673) 3343331</div>	
<div>Design</div> <div>2001 Woodward Ave, Ferryville, NY 11735</div>		<div>Contract</div> <div>NY</div>	
<div>Approved</div> <div>161 Robinson Road, Singapore 110119 (0673) 3343331</div>		<div>Approved</div> <div>161 Robinson Road, Singapore 110119 (0673) 3343331</div>	
<div>Design</div> <div>2001 Woodward Ave, Ferryville, NY 11735</div>		<div>Contract</div> <div>NY</div>	
<div>Approved</div> <div>161 Robinson Road, Singapore 110119 (0673) 3343331</div>		<div>Approved</div> <div>161 Robinson Road, Singapore 110119 (0673) 3343331</div>	
<div>Design</div> <div>2001 Woodward Ave, Ferryville, NY 11735</div>		<div>Contract</div> <div>NY</div>	
<div>Approved</div> <div>161 Robinson Road, Singapore 110119 (0673) 3343331</div>		<div>Approved</div> <div>161 Robinson Road, Singapore 110119 (0673) 3343331</div>	
<div>Design</div> <div>2001 Woodward Ave, Ferryville, NY 11735</div>		<div>Contract</div> <div>NY</div>	
<div>Approved</div> <div>161 Robinson Road, Singapore 110119 (0673) 3343331</div>		<div>Approved</div> <div>161 Robinson Road, Singapore 110119 (0673) 3343331</div>	
<div>Design</div> <div>2001 Woodward Ave, Ferryville, NY 11735</div>		<div>Contract</div> <div>NY</div>	
<div>Approved</div> <div>161 Robinson Road, Singapore 110119 (0673) 3343331</div>		<div>Approved</div> <div>161 Robinson Road, Singapore 110119 (0673) 3343331</div>	
<div>Design</div> <div>2001 Woodward Ave, Ferryville, NY 11735</div>		<div>Contract</div> <div>NY</div>	
<div>Approved</div> <div>161 Robinson Road, Singapore 110119 (0673) 3343331</div>		<div>Approved</div> <div>161 Robinson Road, Singapore 110119 (0673) 3343331</div>	
<div>Design</div> <div>2001 Woodward Ave, Ferryville, NY 11735</div>		<div>Contract</div> <div>NY</div>	
<div>Approved</div> <div>161 Robinson Road, Singapore 110119 (0673) 3343331</div>		<div>Approved</div> <div>161 Robinson Road, Singapore 110119 (0673) 3343331</div>	
<div>Design</div> <div>2001 Woodward Ave, Ferryville, NY 11735</div>		<div>Contract</div> <div>NY</div>	
<div>Approved</div> <div>161 Robinson Road, Singapore 110119 (0673) 3343331</div>		<div>Approved</div> <div>161 Robinson Road, Singapore 110119 (0673) 3343331</div>	
<div>Design</div> <div>2001 Woodward Ave, Ferryville, NY 11735</div>		<div>Contract</div> <div>NY</div>	
<div>Approved</div> <div>161 Robinson Road, Singapore 110119 (0673) 3343331</div>		<div>Approved</div> <div>161 Robinson Road, Singapore 110119 (0673) 3343331</div>	
<div>Design</div> <div>2001 Woodward Ave, Ferryville, NY 11735</div>		<div>Contract</div> <div>NY</div>	
<div>Approved</div> <div>161 Robinson Road, Singapore 110119 (0673) 3343331</div>		<div>Approved</div> <div>161 Robinson Road, Singapore 110119 (0673) 3343331</div>	
<div>Design</div> <div>2001 Woodward Ave, Ferryville, NY 11735</div>		<div>Contract</div> <div>NY</div>	
<div>Approved</div> <div>161 Robinson Road, Singapore 110119 (0673) 3343331</div>		<div>Approved</div> <div>161 Robinson Road, Singapore 110119 (0673) 3343331</div>	
<div>Design</div> <div>2001 Woodward Ave, Ferryville, NY 11735</div>		<div>Contract</div> <div>NY</div>	
<div>Approved</div> <div>161 Robinson Road, Singapore 110119 (0673) 3343331</div>		<div>Approved</div> <div>161 Robinson Road, Singapore 110119 (0673) 3343331</div>	
<div>Design</div> <div>2001 Woodward Ave, Ferryville, NY 11735</div>		<div>Contract</div> <div>NY</div>	
<div>Approved</div> <div>161 Robinson Road, Singapore 110119 (0673) 3343331</div>		<div>Approved</div> <div>161 Robinson Road, Singapore 110119 (0673) 3343331</div>	
<div>Design</div> <div>2001 Woodward Ave, Ferryville, NY 11735</div>		<div>Contract</div> <div>NY</div>	
<div>Approved</div> <div>161 Robinson Road, Singapore 110119 (0673) 3343331</div>		<div>Approved</div> <div>161 Robinson Road, Singapore 110119 (0673) 3343331</div>	
<div>Design</div> <div>2001 Woodward Ave, Ferryville, NY 11735</div>		<div>Contract</div> <div>NY</div>	
<div>Approved</div> <div>161 Robinson Road, Singapore 110119 (0673) 3343331</div>		<div>Approved</div> <div>161 Robinson Road, Singapore 110119 (0673) 3343331</div>	
<div>Design</div> <div>2001 Woodward Ave, Ferryville, NY 11735</div>		<div>Contract</div> <div>NY</div>	
<div>Approved</div> <div>161 Robinson Road, Singapore 110119 (0673) 3343331</div>		<div>Approved</div> <div>161 Robinson Road, Singapore 110119 (0673) 3343331</div>	
<div>Design</div> <div>2001 Woodward Ave, Ferryville, NY 11735</div>		<div>Contract</div> <div>NY</div>	
<div>Approved</div> <div>161 Robinson Road, Singapore 110119 (0673) 3343331</div>		<div>Approved</div> <div>161 Robinson Road, Singapore 110119 (0673) 3343331</div>	
<div>Design</div> <div>2001 Woodward Ave, Ferryville, NY 11735</div>		<div>Contract</div> <div>NY</div>	
<div>Approved</div> <div>161 Robinson Road, Singapore 110119 (0673) 3343331</div>		<div>Approved</div> <div>161 Robinson Road, Singapore 110119 (0673) 3343331</div>	
<div>Design</div> <div>2001 Woodward Ave, Ferryville, NY 11735</div>		<div>Contract</div> <div>NY</div>	
<div>Approved</div> <div>161 Robinson Road, Singapore 110119 (0673) 3343331</div>		<div>Approved</div> <div>161 Robinson Road, Singapore 110119 (0673) 3343331</div>	
<div>Design</div> <div>2001 Woodward Ave, Ferryville, NY 11735</div>		<div>Contract</div> <div>NY</div>	
<div>Approved</div> <div>161 Robinson Road, Singapore 110119 (0673) 3343331</div>		<div>Approved</div> <div>161 Robinson Road, Singapore 110119 (0673) 3343331</div>	
<div>Design</div> <div>2001 Woodward Ave, Ferryville, NY 11735</div>		<div>Contract</div> <div>NY</div>	
<div>Approved</div> <div>161 Robinson Road, Singapore 110119 (0673) 3343331</div>		<div>Approved</div> <div>161 Robinson Road, Singapore 110119 (0673) 3343331</div>	
<div>Design</div> <div>2001 Woodward Ave, Ferryville, NY 11735</div>		<div>Contract</div> <div>NY</div>	
<div>Approved</div> <div>161 Robinson Road, Singapore 110119 (0673) 3343331</div>		<div>Approved</div> <div>161 Robinson Road, Singapore 110119 (0673) 3343331</div>	
<div>Design</div> <div>2001 Woodward Ave, Ferryville, NY 11735&lt;/</div>			

[illegible]

ID	AREA DEFINED	TYPE	TOTAL AS CAPACITY (t/m)	TOTAL OUTLINE (t/m)	TOTAL LOADING (t/m)	CONCRETE LOADING (t/m)	COALING LOADING (t/m)	ACTING LOADING (t/m)	HEATING LOADING (t/m)	CUSTOMER		BASIS OF DESIGN	NET WEIGHT (t/m)	REMARKS
										CONCRETE	HEATING			
10-001	100.14	CEILING CASSETTE	140	40	7.50	5.90	0.227	5.25	0.05	CONCRETE	HEATING	DAWN TACK DESIGN	42	1
10-002	100.14	CEILING CASSETTE	140	40	7.50	5.90	0.227	5.25	0.05	CONCRETE	HEATING	DAWN TACK DESIGN	42	1
10-003	101	CEILING CASSETTE	200	50	7.50	5.90	0.227	5.25	0.05	CONCRETE	HEATING	DAWN TACK DESIGN	42	1
10-004	124	CEILING CASSETTE	22	22	12.00	8.80	0.045	14.00	0.05	CONCRETE	HEATING	DAWN TACK DESIGN	42	1
10-005	124	CEILING CASSETTE	22	22	12.00	8.80	0.045	14.00	0.05	CONCRETE	HEATING	DAWN TACK DESIGN	42	1
10-006	119.52 11.15	CEILING CASSETTE	310	50	7.50	5.90	0.227	5.25	0.05	CONCRETE	HEATING	DAWN TACK DESIGN	42	1
10-007	120	CEILING CASSETTE	50	40	10.00	11.20	0.119	21.00	0.120	CONCRETE	HEATING	DAWN TACK DESIGN	42	1
10-008	119.52	CEILING CASSETTE	400	40	10.00	11.20	0.119	21.00	0.120	CONCRETE	HEATING	DAWN TACK DESIGN	42	1
10-009	119.52	CEILING CASSETTE	400	40	10.00	11.20	0.119	21.00	0.120	CONCRETE	HEATING	DAWN TACK DESIGN	42	1
10-010	118.17	CEILING CASSETTE	30	20	12.50	8.20	0.095	14.00	0.07	CONCRETE	HEATING	DAWN TACK DESIGN	42	1
10-011	100	CEILING CASSETTE	200	50	7.50	5.90	0.227	5.25	0.05	CONCRETE	HEATING	DAWN TACK DESIGN	42	1
10-012	100	CEILING CASSETTE	200	50	7.50	5.90	0.227	5.25	0.05	CONCRETE	HEATING	DAWN TACK DESIGN	42	1
10-013	112.13 14.15	CEILING CASSETTE	400	40	10.00	11.20	0.119	21.00	0.120	CONCRETE	HEATING	DAWN TACK DESIGN	42	1
10-014	112.13 14.15	CEILING CASSETTE	400	40	10.00	11.20	0.119	21.00	0.120	CONCRETE	HEATING	DAWN TACK DESIGN	42	1
10-015	100.14 10.0	CEILING CASSETTE	340	40	10.00	11.20	0.119	21.00	0.120	CONCRETE	HEATING	DAWN TACK DESIGN	42	1
10-016	100.14 10.0	CEILING CASSETTE	340	40	10.00	11.20	0.119	21.00	0.120	CONCRETE	HEATING	DAWN TACK DESIGN	42	1
10-017	100.14 10.0	CEILING CASSETTE	340	40	10.00	11.20	0.119	21.00	0.120	CONCRETE	HEATING	DAWN TACK DESIGN	42	1
10-018	100.14 10.0	CEILING CASSETTE	340	40	10.00	11.20	0.119	21.00	0.120	CONCRETE	HEATING	DAWN TACK DESIGN	42	1
10-019	111	CEILING CASSETTE	240	40	7.50	5.90	0.227	5.25	0.05	CONCRETE	HEATING	DAWN TACK DESIGN	42	1
10-020	110	CEILING CASSETTE	240	40	7.50	5.90	0.227	5.25	0.05	CONCRETE	HEATING	DAWN TACK DESIGN	42	1
10-021	110	CEILING CASSETTE	240	40	7.50	5.90	0.227	5.25	0.05	CONCRETE	HEATING	DAWN TACK DESIGN	42	1
10-022	110	CEILING CASSETTE	240	40	7.50	5.90	0.227	5.25	0.05	CONCRETE	HEATING	DAWN TACK DESIGN	42	1
10-023	110	CEILING CASSETTE	240	40	7.50	5.90	0.227	5.25	0.05	CONCRETE	HEATING	DAWN TACK DESIGN	42	1
10-024	110	CEILING CASSETTE	240	40	7.50	5.90	0.227	5.25	0.05	CONCRETE	HEATING	DAWN TACK DESIGN	42	1
10-025	110	CEILING CASSETTE	240	40	7.50	5.90	0.227	5.25	0.05	CONCRETE	HEATING	DAWN TACK DESIGN	42	1
10-026	110	CEILING CASSETTE	240	40	7.50	5.90	0.227	5.25	0.05	CONCRETE	HEATING	DAWN TACK DESIGN	42	1
10-027	110	CEILING CASSETTE	240	40	7.50	5.90	0.227	5.25	0.05	CONCRETE	HEATING			

1. PROVIDE FACTORY MOUNTED CONDENSATE PUMP.
2. INTERLOCK THE FOLLOWING INDOOR UNITS TOGETHER DATED A SINGLE THERMOSTAT
3. INTERLOCK THE FOLLOWING INDOOR UNITS TOGETHER ONTO A SINGLE THERMOSTAT
4. INTERLOCK THE FOLLOWING INDOOR UNITS TOGETHER ONTO A SINGLE THERMOSTAT
5. INTERLOCK THE FOLLOWING INDOOR UNITS TOGETHER ONTO A SINGLE THERMOSTAT
6. INTERLOCK THE FOLLOWING INDOOR UNITS TOGETHER ONTO A SINGLE THERMOSTAT

ID	AREA COVERED	SUPPLY AIR (CFM)	EXHAUST FAN MOTOR HP	EXHAUST AIR FLOW (CFM)	EXHAUST FAN MOTOR HP	AREA (SQ. FT.)	DESIGN CONDITIONS			ELECTRICAL				BASED ON DESIGN	WIRING (LBS)	REMARKS
							Summer (Dry Bulb)	Summer (Wet Bulb)	Winter (Dry Bulb)	VOLTS/PHASE	RCA	ICA	KVA			
EM-401	500 SQ. FT. 25'	400	1/2	400	1/2	550	80.0	74.0	53.0	115V/1PH/3C	1.60	14.0	2.0	DEFLECTION W/OUT STRESS	250	
EM-402	300 SQ. FT. 25'	200	1/2	200	1/2	550	80.0	74.0	53.0	115V/1PH/3C	1.60	14.0	2.0	DEFLECTION W/OUT STRESS	250	
EM-403	100 SQ. FT. 25'	100	1/2	100	1/2	550	80.0	74.0	53.0	115V/1PH/3C	1.60	14.0	2.0	DEFLECTION W/OUT STRESS	250	
EM-404	100 SQ. FT. 25'	100	1/2	100	1/2	550	80.0	74.0	53.0	115V/1PH/3C	1.60	14.0	2.0	DEFLECTION W/OUT STRESS	250	
EM-405	100 SQ. FT. 25'	100	1/2	100	1/2	550	80.0	74.0	53.0	115V/1PH/3C	1.60	14.0	2.0	DEFLECTION W/OUT STRESS	250	
EM-406	100 SQ. FT. 25'	100	1/2	100	1/2	550	80.0	74.0	53.0	115V/1PH/3C	1.60	14.0	2.0	DEFLECTION W/OUT STRESS	250	
EM-407	100 SQ. FT. 25'	100	1/2	100	1/2	550	80.0	74.0	53.0	115V/1PH/3C	1.60	14.0	2.0	DEFLECTION W/OUT STRESS	250	
EM-408	100 SQ. FT. 25'	100	1/2	100	1/2	550	80.0	74.0	53.0	115V/1PH/3C	1.60	14.0	2.0	DEFLECTION W/OUT STRESS	250	
EM-409	100 SQ. FT. 25'	100	1/2	100	1/2	550	80.0	74.0	53.0	115V/1PH/3C	1.60	14.0	2.0	DEFLECTION W/OUT STRESS	250	
EM-410	100 SQ. FT. 25'	100	1/2	100	1/2	550	80.0	74.0	53.0	115V/1PH/3C	1.60	14.0	2.0	DEFLECTION W/OUT STRESS	250	
EM-411	100 SQ. FT. 25'	100	1/2	100	1/2	550	80.0	74.0	53.0	115V/1PH/3C	1.60	14.0	2.0	DEFLECTION W/OUT STRESS	250	
EM-412	100 SQ. FT. 25'	100	1/2	100	1/2	550	80.0	74.0	53.0	115V/1PH/3C	1.60	14.0	2.0	DEFLECTION W/OUT STRESS	250	
EM-413	100 SQ. FT. 25'	100	1/2	100	1/2	550	80.0	74.0	53.0	115V/1PH/3C	1.60	14.0	2.0	DEFLECTION W/OUT STRESS	250	
EM-414	100 SQ. FT. 25'	100	1/2	100	1/2	550	80.0	74.0	53.0	115V/1PH/3C	1.60	14.0	2.0	DEFLECTION W/OUT STRESS	250	
EM-415	100 SQ. FT. 25'	100	1/2	100	1/2	550	80.0	74.0	53.0	115V/1PH/3C	1.60	14.0	2.0	DEFLECTION W/OUT STRESS	250	
EM-416	100 SQ. FT. 25'	100	1/2	100	1/2	550	80.0	74.0	53.0	115V/1PH/3C	1.60	14.0	2.0	DEFLECTION W/OUT STRESS	250	
EM-417	100 SQ. FT. 25'	100	1/2	100	1/2	550	80.0	74.0	53.0	115V/1PH/3C	1.60	14.0	2.0	DEFLECTION W/OUT STRESS	250	
EM-418	100 SQ. FT. 25'	100	1/2	100	1/2	550	80.0	74.0	53.0	115V/1PH/3C	1.60	14.0	2.0	DEFLECTION W/OUT STRESS	250	
EM-419	100 SQ. FT. 25'	100	1/2	100	1/2	550	80.0	74.0	53.0	115V/1PH/3C	1.60	14.0	2.0	DEFLECTION W/OUT STRESS	250	
EM-420	100 SQ. FT. 25'	100	1/2	100	1/2	550	80.0	74.0	53.0	115V/1PH/3C	1.60	14.0	2.0	DEFLECTION W/OUT STRESS	250	
EM-421	100 SQ. FT. 25'	100	1/2	100	1/2	550	80.0	74.0	53.0	115V/1PH/3C	1.60	14.0	2.0	DEFLECTION W/OUT STRESS	250	
EM-422																

## BID DOCUMENTS

M-T-R

LANDSCAPE ARCHITECT  
161 Duane Road Pittsburgh, PA 15222 (412) 933-6600

Project Name	NATIONAL CEMETERY
Station	ADMINISTRATION
Building Number	OFFICE OF DESIGN
Drawing Number	AND CONSTRUCTION

53353.03\Drawings



# FAN SCHEDULE

ID	SERVICE	APPROX (SQ FT)	IN (IN)	OUT (IN)	PAV (IN)	ELECTRICAL	BASE OF DESIGN	NET WEIGHT (LBS)	REMARKS
FAN1	EQUIPMENT BUILDING	1400	24"	24"	24"	24"	24"	24"	24"

1. PROVIDE AIRFLOW MOUNTED THERMOSTAT.  
2. PROVIDE MAIN FAN UNIT RECOMMENDED LOUVER.  
3. PROVIDE MAIN FAN UNIT RECOMMENDED LOUVER.  
4. PROVIDE MAIN FAN UNIT RECOMMENDED LOUVER.

# UNIT HEATER SCHEDULE

ID	SERVICE	CH	CV	ELECTRICAL	PAV (IN)	BASE OF DESIGN	NET WEIGHT (LBS)	REMARKS
U-101	20	200	100	200	200	200	200	200

1. PROVIDE AIRFLOW MOUNTED THERMOSTAT.

# AIR DEVICE SCHEDULE

ID	SERVICE	APPROX (SQ FT)	IN (IN)	OUT (IN)	PAV (IN)	ELECTRICAL	BASE OF DESIGN	NET WEIGHT (LBS)	REMARKS
A-101	20	200	100	200	200	200	200	200	200

# LOUVER SCHEDULE

ID	SERVICE	APPROX (SQ FT)	IN (IN)	OUT (IN)	PAV (IN)	ELECTRICAL	BASE OF DESIGN	NET WEIGHT (LBS)	REMARKS
L-101	20	200	100	200	200	200	200	200	200

# HEATING WATER BOILER SCHEDULE

ID	SERVICE	APPROX (SQ FT)	IN (IN)	OUT (IN)	PAV (IN)	ELECTRICAL	BASE OF DESIGN	NET WEIGHT (LBS)	REMARKS
H-101	20	200	100	200	200	200	200	200	200

1. PROVIDE AIRFLOW MOUNTED THERMOSTAT.  
2. PROVIDE MAIN FAN UNIT RECOMMENDED LOUVER.  
3. PROVIDE MAIN FAN UNIT RECOMMENDED LOUVER.

# PUMP SCHEDULE

ID	SERVICE	APPROX (SQ FT)	IN (IN)	OUT (IN)	PAV (IN)	ELECTRICAL	BASE OF DESIGN	NET WEIGHT (LBS)	REMARKS
P-101	20	200	100	200	200	200	200	200	200

## CONSULTANTS



## ARCHITECT/ENGINEERS



## MECHANICAL SCHEDULES

MECHANICAL SCHEDULES

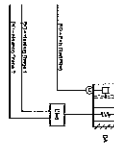
## BID DOCUMENTS

BID DOCUMENTS

NATIONAL CEMENTARY  
ADMINISTRATION  
OFFICE OF DESIGN  
AND CONSTRUCTION

H-6.2





LAST RESORT (DOWN INJECTION) UNIT  
 ALARM SHALL BE PROVIDED AS FOLLOWS:  
 • LOW ZONE TEMP IF THE ZONE TEMPERATURE IS LESS THAN THE HEATING SETPOINT BY A USER DEFINABLE AMOUNT (SLO).

ZONE SETPOINT ADJUST  
 THE COOLING SHALL BE ABLE TO ADJUST THE ZONE TEMPERATURE HEATING AND COOL SETPOINTS AT THE ZONE CONTROL.

PAU  
 THE PAU SHALL MAINTAIN THE ZONE TEMPERATURE ABOVE HEATING SETPOINT, LIMITED SHUTDOWN ON OVERHEAT.

HEATING HEATING SPACE  
 THE COOLING SHALL MAINTAIN THE ZONE TEMPERATURE AND STAY THE HEATING TO MAINTAIN TO HEATING SETPOINT. THE COOLING SHALL MAINTAIN THE ZONE TEMPERATURE AND STAY THE HEATING TO MAINTAIN TO HEATING SETPOINT. THE COOLING SHALL MAINTAIN THE ZONE TEMPERATURE AND STAY THE HEATING TO MAINTAIN TO HEATING SETPOINT.

THE HEATING SHALL BE ENABLED WHENEVER:  
 • AND THE ZONE TEMPERATURE IS BELOW HEATING SETPOINT.  
 • AND THE PAU IS ON.



HEATING HEATING SPACE

THE COOLING SHALL MAINTAIN THE ZONE TEMPERATURE AND STAY THE HEATING TO MAINTAIN TO HEATING SETPOINT. THE COOLING SHALL MAINTAIN THE ZONE TEMPERATURE AND STAY THE HEATING TO MAINTAIN TO HEATING SETPOINT.

THE COOLING SHALL MAINTAIN THE ZONE TEMPERATURE AND STAY THE HEATING TO MAINTAIN TO HEATING SETPOINT. THE COOLING SHALL MAINTAIN THE ZONE TEMPERATURE AND STAY THE HEATING TO MAINTAIN TO HEATING SETPOINT.

THE COOLING SHALL MAINTAIN THE ZONE TEMPERATURE AND STAY THE HEATING TO MAINTAIN TO HEATING SETPOINT. THE COOLING SHALL MAINTAIN THE ZONE TEMPERATURE AND STAY THE HEATING TO MAINTAIN TO HEATING SETPOINT.

THE COOLING SHALL MAINTAIN THE ZONE TEMPERATURE AND STAY THE HEATING TO MAINTAIN TO HEATING SETPOINT. THE COOLING SHALL MAINTAIN THE ZONE TEMPERATURE AND STAY THE HEATING TO MAINTAIN TO HEATING SETPOINT.

THE COOLING SHALL MAINTAIN THE ZONE TEMPERATURE AND STAY THE HEATING TO MAINTAIN TO HEATING SETPOINT. THE COOLING SHALL MAINTAIN THE ZONE TEMPERATURE AND STAY THE HEATING TO MAINTAIN TO HEATING SETPOINT.

THE COOLING SHALL MAINTAIN THE ZONE TEMPERATURE AND STAY THE HEATING TO MAINTAIN TO HEATING SETPOINT. THE COOLING SHALL MAINTAIN THE ZONE TEMPERATURE AND STAY THE HEATING TO MAINTAIN TO HEATING SETPOINT.

THE COOLING SHALL MAINTAIN THE ZONE TEMPERATURE AND STAY THE HEATING TO MAINTAIN TO HEATING SETPOINT. THE COOLING SHALL MAINTAIN THE ZONE TEMPERATURE AND STAY THE HEATING TO MAINTAIN TO HEATING SETPOINT.

THE COOLING SHALL MAINTAIN THE ZONE TEMPERATURE AND STAY THE HEATING TO MAINTAIN TO HEATING SETPOINT. THE COOLING SHALL MAINTAIN THE ZONE TEMPERATURE AND STAY THE HEATING TO MAINTAIN TO HEATING SETPOINT.

THE COOLING SHALL MAINTAIN THE ZONE TEMPERATURE AND STAY THE HEATING TO MAINTAIN TO HEATING SETPOINT. THE COOLING SHALL MAINTAIN THE ZONE TEMPERATURE AND STAY THE HEATING TO MAINTAIN TO HEATING SETPOINT.

THE COOLING SHALL MAINTAIN THE ZONE TEMPERATURE AND STAY THE HEATING TO MAINTAIN TO HEATING SETPOINT. THE COOLING SHALL MAINTAIN THE ZONE TEMPERATURE AND STAY THE HEATING TO MAINTAIN TO HEATING SETPOINT.

THE COOLING SHALL MAINTAIN THE ZONE TEMPERATURE AND STAY THE HEATING TO MAINTAIN TO HEATING SETPOINT. THE COOLING SHALL MAINTAIN THE ZONE TEMPERATURE AND STAY THE HEATING TO MAINTAIN TO HEATING SETPOINT.

THE COOLING SHALL MAINTAIN THE ZONE TEMPERATURE AND STAY THE HEATING TO MAINTAIN TO HEATING SETPOINT. THE COOLING SHALL MAINTAIN THE ZONE TEMPERATURE AND STAY THE HEATING TO MAINTAIN TO HEATING SETPOINT.

THE COOLING SHALL MAINTAIN THE ZONE TEMPERATURE AND STAY THE HEATING TO MAINTAIN TO HEATING SETPOINT. THE COOLING SHALL MAINTAIN THE ZONE TEMPERATURE AND STAY THE HEATING TO MAINTAIN TO HEATING SETPOINT.

THE COOLING SHALL MAINTAIN THE ZONE TEMPERATURE AND STAY THE HEATING TO MAINTAIN TO HEATING SETPOINT. THE COOLING SHALL MAINTAIN THE ZONE TEMPERATURE AND STAY THE HEATING TO MAINTAIN TO HEATING SETPOINT.

THE COOLING SHALL MAINTAIN THE ZONE TEMPERATURE AND STAY THE HEATING TO MAINTAIN TO HEATING SETPOINT. THE COOLING SHALL MAINTAIN THE ZONE TEMPERATURE AND STAY THE HEATING TO MAINTAIN TO HEATING SETPOINT.

THE COOLING SHALL MAINTAIN THE ZONE TEMPERATURE AND STAY THE HEATING TO MAINTAIN TO HEATING SETPOINT. THE COOLING SHALL MAINTAIN THE ZONE TEMPERATURE AND STAY THE HEATING TO MAINTAIN TO HEATING SETPOINT.

THE COOLING SHALL MAINTAIN THE ZONE TEMPERATURE AND STAY THE HEATING TO MAINTAIN TO HEATING SETPOINT. THE COOLING SHALL MAINTAIN THE ZONE TEMPERATURE AND STAY THE HEATING TO MAINTAIN TO HEATING SETPOINT.

THE COOLING SHALL MAINTAIN THE ZONE TEMPERATURE AND STAY THE HEATING TO MAINTAIN TO HEATING SETPOINT. THE COOLING SHALL MAINTAIN THE ZONE TEMPERATURE AND STAY THE HEATING TO MAINTAIN TO HEATING SETPOINT.

THE COOLING SHALL MAINTAIN THE ZONE TEMPERATURE AND STAY THE HEATING TO MAINTAIN TO HEATING SETPOINT. THE COOLING SHALL MAINTAIN THE ZONE TEMPERATURE AND STAY THE HEATING TO MAINTAIN TO HEATING SETPOINT.

THE COOLING SHALL MAINTAIN THE ZONE TEMPERATURE AND STAY THE HEATING TO MAINTAIN TO HEATING SETPOINT. THE COOLING SHALL MAINTAIN THE ZONE TEMPERATURE AND STAY THE HEATING TO MAINTAIN TO HEATING SETPOINT.

THE COOLING SHALL MAINTAIN THE ZONE TEMPERATURE AND STAY THE HEATING TO MAINTAIN TO HEATING SETPOINT. THE COOLING SHALL MAINTAIN THE ZONE TEMPERATURE AND STAY THE HEATING TO MAINTAIN TO HEATING SETPOINT.

CONSULTANTS  
 Hiram Group  
 KCI  
 willow  
 ARCHITECT/ENGINEERS  
 E&M-T.R.  
 LANDSCAPE ARCHITECTS

MECHANICAL CONTROLS  
 Approved Project Director

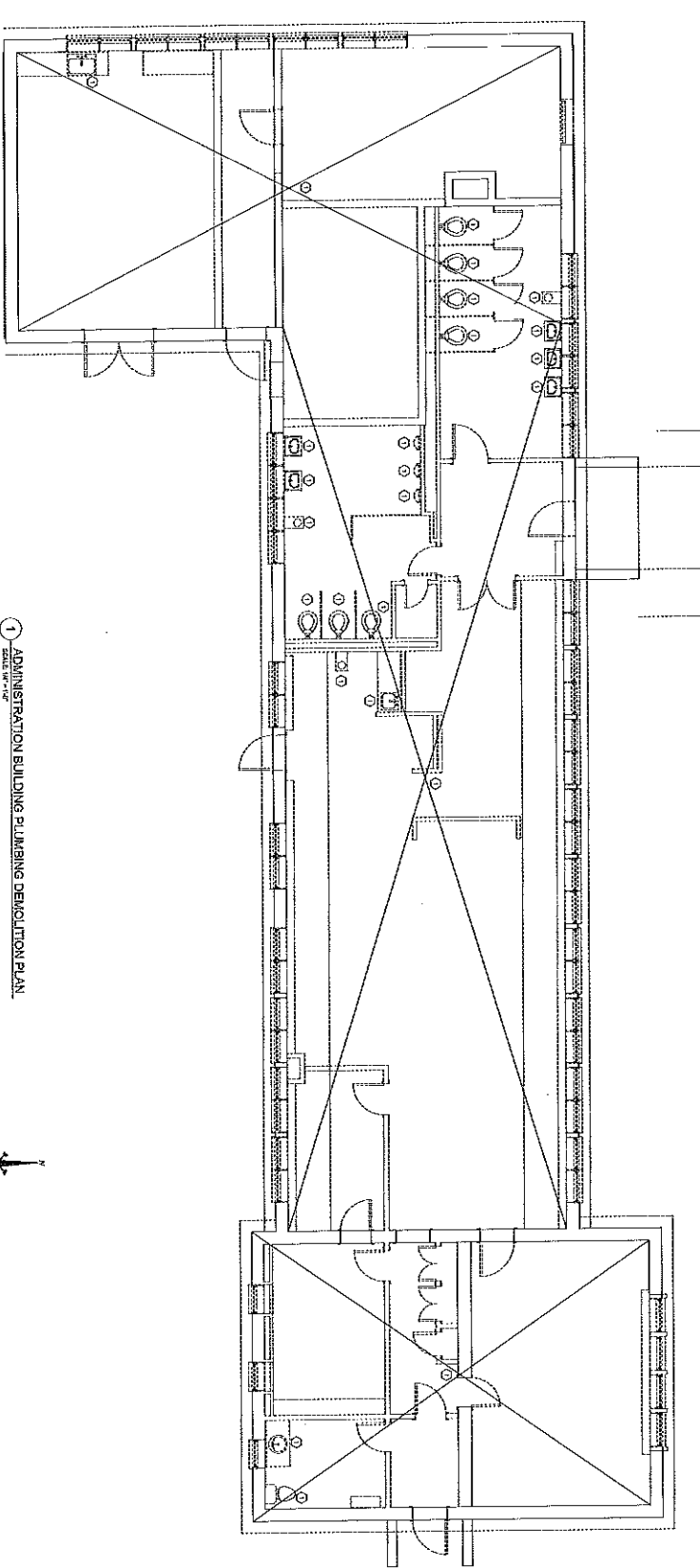
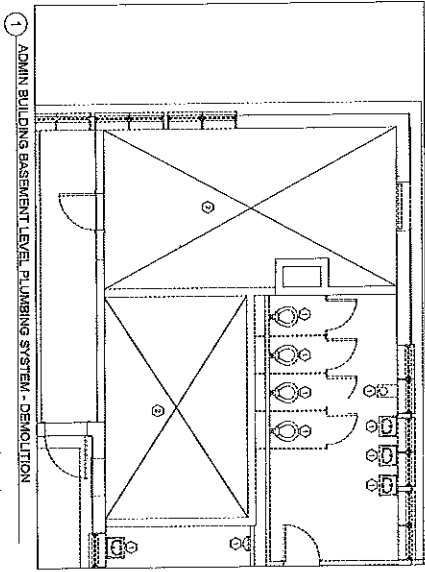
Project Title  
 Administration / Public Restroom  
 Renovations and  
 New Equipment Storage Building  
 2000 Woodland Ave., Birmingham, AL 35203  
 2000 Woodland Ave., Birmingham, AL 35203  
 2000 Woodland Ave., Birmingham, AL 35203

Project Number  
 H-7.2  
 Date of Revision  
 11/11/11

NATIONAL CEMETERY  
 ADMINISTRATION  
 OFFICE OF DESIGN  
 AND CONSTRUCTION







- GENERAL NOTES**
1. ALL EXISTING PLUMBING SHALL BE DEMOLISHED AND REMOVED FROM THE PROJECT SITE.
  2. ALL EXISTING PLUMBING SHALL BE DEMOLISHED AND REMOVED FROM THE PROJECT SITE.
  3. DEMOLITION SHALL BE ACCORDING TO THE DEMOLITION SPECIFICATIONS AND SHALL BE IN ACCORDANCE WITH THE DEMOLITION SPECIFICATIONS AND SHALL BE IN ACCORDANCE WITH THE DEMOLITION SPECIFICATIONS.
  4. CONTRACTOR SHALL FIELD VERIFY ALL PLUMBING LOCATIONS AND CONNECTIONS.
- KEYED NOTES**
1. SEE DEMOLITION SPECIFICATIONS FOR ALL PLUMBING DEMOLITION.
  2. SEE DEMOLITION SPECIFICATIONS FOR ALL PLUMBING DEMOLITION.
  3. SEE DEMOLITION SPECIFICATIONS FOR ALL PLUMBING DEMOLITION.
  4. SEE DEMOLITION SPECIFICATIONS FOR ALL PLUMBING DEMOLITION.

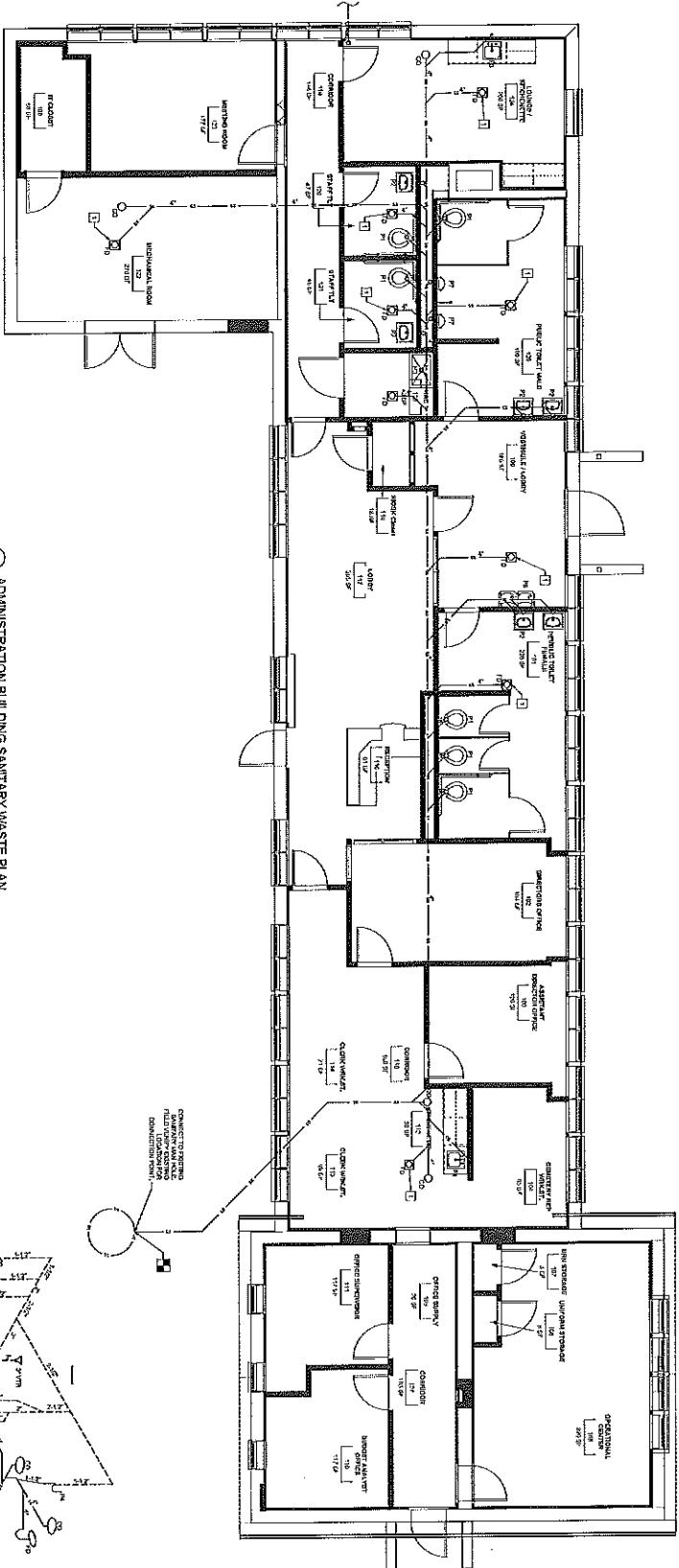
**BID DOCUMENTS**

CONSULTANTS		ARCHITECT/ENGINEERS		Drawing Title		Project Number		National Category	
 Hirani Group		 KCI KCI ENGINEERING & ARCHITECTURE 1000000000 1000000000 1000000000 1000000000 1000000000 1000000000 1000000000 1000000000 1000000000 1000000000 1000000000 1000000000 1000000000 1000000000 1000000000 1000000000 1000000000 1000000000 1000000000 1000000000 1000000000 1000000000 1000000000 1000000000 1000000000 1000000000 1000000000 1000000000 1000000000 1000000000 1000000000 1000000000 1000000000 1000000000 1000000000 1000000000 1000000000 1000000000 1000000000 1000000000 1000000000 1000000000 1000000000 1000000000 1000000000 1000000000 1000000000 1000000000 1000000000 1000000000 1000000000 1000000000 1000000000 1000000000 1000000000 1000000000 1000000000 1000000000 1000000000 1000000000 1000000000 1000000000 1000000000 1000000000 1000000000 1000000000 1000000000 1000000000 1000000000 1000000000 1000000000 1000000000 1000000000 1000000000 1000000000 1000000000 1000000000 1000000000 1000000000 1000000000 1000000000 1000000000 1000000000 1000000000 1000000000 1000000000 1000000000 1000000000 1000000000 1000000000 1000000000 1000000000 1000000000 1000000000 1000000000 1000000000 1000000000 1000000000 1000000000 1000000000 1000000000 1000000000 1000000000 1000000000 1000000000 1000000000 1000000000 1000000000 1000000000 1000000000 1000000000 1000000000 1000000000 1000000000 1000000000 1000000000 1000000000 1000000000 1000000000 1000000000 1000000000 1000000000 1000000000 1000000000 1000000000 1000000000 1000000000 1000000000 1000000000 1000000000 1000000000 1000000000 1000000000 1000000000 1000000000 1000000000 1000000000 1000000000 1000000000 1000000000 1000000000 1000000000 1000000000 1000000000 1000000000 1000000000 1000000000 1000000000 1000000000 1000000000 1000000000 1000000000 1000000000 1000000000 1000000000 1000000000 1000000000 1000000000 1000000000 1000000000 1000000000 1000000000 1000000000 1000000000 1000000000 1000000000 1000000000 1000000000 1000000000 1000000000 1000000000 1000000000 1000000000 1000000000 1000000000 1000000000 1000000000 1000000000 1000000000 1000000000 1000000000 1000000000 1000000000 1000000000 1000000000 1000000000 1000000000 1000000000 1000000000 1000000000 1000000000 1000000000 1000000000 1000000000 1000000000 1000000000 1000000000 1000000000 1000000000 1000000000 1000000000 1000000000 1000000000 1000000000 1000000000 1000000000 1000000000 1000000000 1000000000 1000000000 1000000000 1000000000 1000000000 1000000000 1000000000 1000000000 1000000000 1000000000 1000000000 1000000000 1000000000 1000000000 1000000000 1000000000 1000000000 1000000000 1000000000 1000000000 1000000000 1000000000 1000000000 1000000000 1000000000 1000000000 1000000000 1000000000 1000000000 1000000000 1000000000 1000000000 1000000000 1000000000 1000000000 1000000000 1000000000 1000000000 1000000000 1000000000 1000000000 1000000000 1000000000 1000000000 1000000000 1000000000 1000000000 1000000000 1000000000 1000000000 1000000000 1000000000 1000000000 1000000000 1000000000 1000000000 1000000000 1000000000 1000000000 1000000000 1000000000 1000000000 1000000000 1000000000 1000000000 1000000000 1000000000 1000000000 1000000000 1000000000 1000000000 1000000000 1000000000 1000000000 1000000000 1000000000 1000000000 1000000000 1000000000 1000000000 1000000000 1000000000 1000000000 1000000000 1000000000 1000000000 1000000000 1000000000 1000000000 1000000000 1000000000 1000000000 1000000000 1000000000 1000000000 1000000000 1000000000 1000000000 1000000000 1000000000 1000000000 1000000000 1000000000 1000000000 1000000000 1000000000 1000000000 1000000000 1000000000 1000000000 1000000000 1000000000 1000000000 1000000000 1000000000 1000000000 1000000000 1000000000 1000000000 1000000000 1000000000 1000000000 1000000000 1000000000 1000000000 1000000000 1000000000 1000000000 1000000000 1000000000 1000000000 1000000000 1000000000 1000000000 1000000000 1000000000 1000000000 1000000000 1000000000 1000000000 1000000000 1000000000 1000000000 1000000000 1000000000 1000000000 1000000000 1000000000 1000000000 1000000000 1000000000 1000000000 1000000000 1000000000 1000000000 1000000000 1000000000 1000000000 1000000000 1000000000 1000000000 1000000000 1000000000 1000000000 1000000000 1000000000 1000000000 1000000000 1000000000 1000000000 1000000000 1000000000 1000000000 1000000000 1000000000 1000000000 1000000000 1000000000 1000000000 1000000000 1000000000 1000000000 1000000000 1000000000 1000000000 1000000000 1000000000 1000000000 1000000000 1000000000 1000000000 1000000000 1000000000 1000000000 1000000000 1000000000 1000000000 1000000000 1000000000 1000000000 1000000000 1000000000 1000000000 1000000000 1000000000 1000000000 1000000000 1000000000 1000000000 1000000000 1000000000 1000000000 1000000000 1000000000 1000000000 1000000000 1000000000 1000000000 1000000000 1000000000 1000000000 1000000000 1000000000 1000000000 1000000000 1000000000 1000000000 1000000000 1000000000 1000000000 1000000000 1000000000 1000000000 1000000000 1000000000 1000000000 1000000000 1000000000 1000000000 1000000000 1000000000 1000000000 1000000000 1000000000 1000000000 1000000000 1000000000 1000000000 1000000000 1000000000 1000000000 1000000000 1000000000 1000000000 1000000000 1000000000 1000000000 1000000000 1000000000 1000000000 1000000000 1000000000 1000000000 1000000000 1000000000 1000000000 1000000000 1000000000 1000000000 1000000000 1000000000 1000000000 1000000000 1000000000 1000000000 1000000000 1000000000 1000000000 1000000000 1000000000 1000000000 1000000000 1000000000 1000000000 1000000000 1000000000 1000000000 1000000000 1000000000 1000000000 1000000000 1000000000 1000000000 1000000000 1000000000 1000000000 1000000000 1000000000 1000000000 1000000000 1000000000 1000000000 1000000000 1000000000 1000000000 1000000000 1000000000 1000000000 1000000000 1000000000 1000000000 1000000000 1000000000 1000000000 1000000000 1000000000 1000000000 1000000000 1000000000 1000000000 1000000000 1000000000 1000000000 1000000000 1000000000 1000000000 1000000000 1000000000 1000000000 1000000000 1000000000 1000000000 1000000000 1000000000 1000000000 1000000000 1000000000 1000000000 1000000000 1000000000 1000000000 1000000000 1000000000 1000000000 1000000000 1000000000 1000000000 1000000000 1000000000 1000000000 1000000000 1000000000 1000000000 1000000000 1000000000 1000000000 1000000000 1000000000 1000000000 1000000000 1000000000 1000000000 1000000000 1000000000 1000000000 1000000000 1000000000 1000000000 1000000000 1000000000 1000000000 1000000000 1000000000 1000000000 1000000000 1000000000 1000000000 1000000000 1000000000 1000000000 1000000000 1000000000 1000000000 1000000000 1000000000 1000000000 1000000000 1000000000 1000000000 1000000000 1000000000 1000000000 1000000000 1000000000 1000000000 1000000000 1000000000 1000000000 1000000000 1000000000 1000000000 1000000000 1000000000 1000000000 1000000000 1000000000 1000000000 1000000000 1000000000 1000000000 1000000000 1000000000 1000000000 1000000000 1000000000 1000000000 1000000000 1000000000 1000000000 1000000000 1000000000 1000000000 1000000000 1000000000 1000000000 1000000000 1000000000 1000000000 1000000000 1000000000 1000000000 1000000000 1000000000 1000000000 1000000000 1000000000 1000000000 1000000000 1000000000 1000000000 1000000000 1000000000 1000000000 1000000000 1000000000 1000000000 1000000000 1000000000 1000000000 1000000000 1000000000 1000000000 1000000000 1000000000 1000000000 1000000000 1000000000 1000000000 1000000000 1000000000 1000000000 1000000000 1000000000 1000000000 1000000000 1000000000 1000000000 1000000000 1000000000 1000000000 1000000000 1000000000 1000000000 1000000000 1000000000 1000000000 1000000000 1000000000 1000000000 1000000000 1000000000 1000000000 1000000000 1000000000 1000000000 1000000000 1000000000 1000000000 1000000000 1000000000 1000000000 1000000000 1000000000 1000000000 1000000000 1000000000 1000000000 1000000000 1000000000 1000000000 1000000000 1000000000 1000000000 1000000000 1000000000 1000000000 1000000000 1000000000 1000000000 1000000000 1000000000 1000000000 1000000000 1000000000 1000000000 1000000000 1000000000 1000000000 1000000000 1000000000 1000000000 1000000000 1000000000 1000000000 1000000000 1000000000 1000000000 1000000000 1000000000 1000000000 1000000000 1000000000 1000000000 1000000000 1000000000 1000000000 1000000000 1000000000 1000000000 1000000000 1000000000 1000000000 1000000000 1000000000 1000000000 1000000000 1000000000 1000000000 1000000000 1000000000 1000000000 1000000000 1000000000 1000000000 1000000000 1000000000 1000000000 1000000000 1000000000 1000000000 1000000000 1000000000 1000000000 1000000000 1000000000 1000000000 1000000000 1000000000 1000000000 1000000000 1000000000 1000000000 1000000000 1000000000 1000000000 1000000000 1000000000 1000000000 1000000000 1000000000 1000000000 1000000000 1000000000 1000000000 1000000000 1000000000 1000000000 1000000000 1000000000 1000000000 1000000000 1000000000 1000000000 1000000000 1000000000 1000000000 1000000000 1000000000 1000000000 1000000000 1000000000 1000000000 1000000000 1000000000 1000000000 1000000000 100000000							

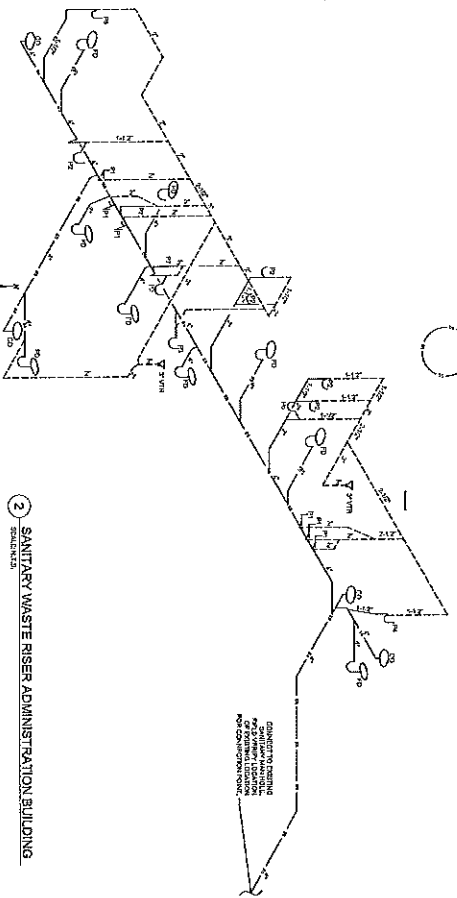
- GENERAL NOTES**
1. REFER TO SHEET FOR GENERAL NOTES, ASSOCIATING SHEET, ETC.
  2. ALL PIPES SHALL BE CONFORMED TO ADEQUATE SLOPE.
  3. ALL NEW PIPES SHALL BE CONFORMED TO ADEQUATE SLOPE.
  4. CONSTRUCTION SHALL FOLLOW ALL APPLICABLE PERMITS, ORDINANCES AND CONSTRUCTION CODES.

**KEYED NOTES**

1. PIPES SHALL BE CONFORMED TO ADEQUATE SLOPE.



1 ADMINISTRATION BUILDING SANITARY WASTE PLAN  
SCALE: 1/8" = 1'-0"



2 SANITARY WASTE RISER ADMINISTRATION BUILDING  
SCALE: 1/8" = 1'-0"

**CONSULTANTS**



**ARCHITECT/ENGINEERS**



ADMINISTRATION BUILDING  
SANITARY WASTE PLAN

ADMINISTRATOR PUBLIC RESTROOM  
NEW BUILDING DESIGN BUILDING

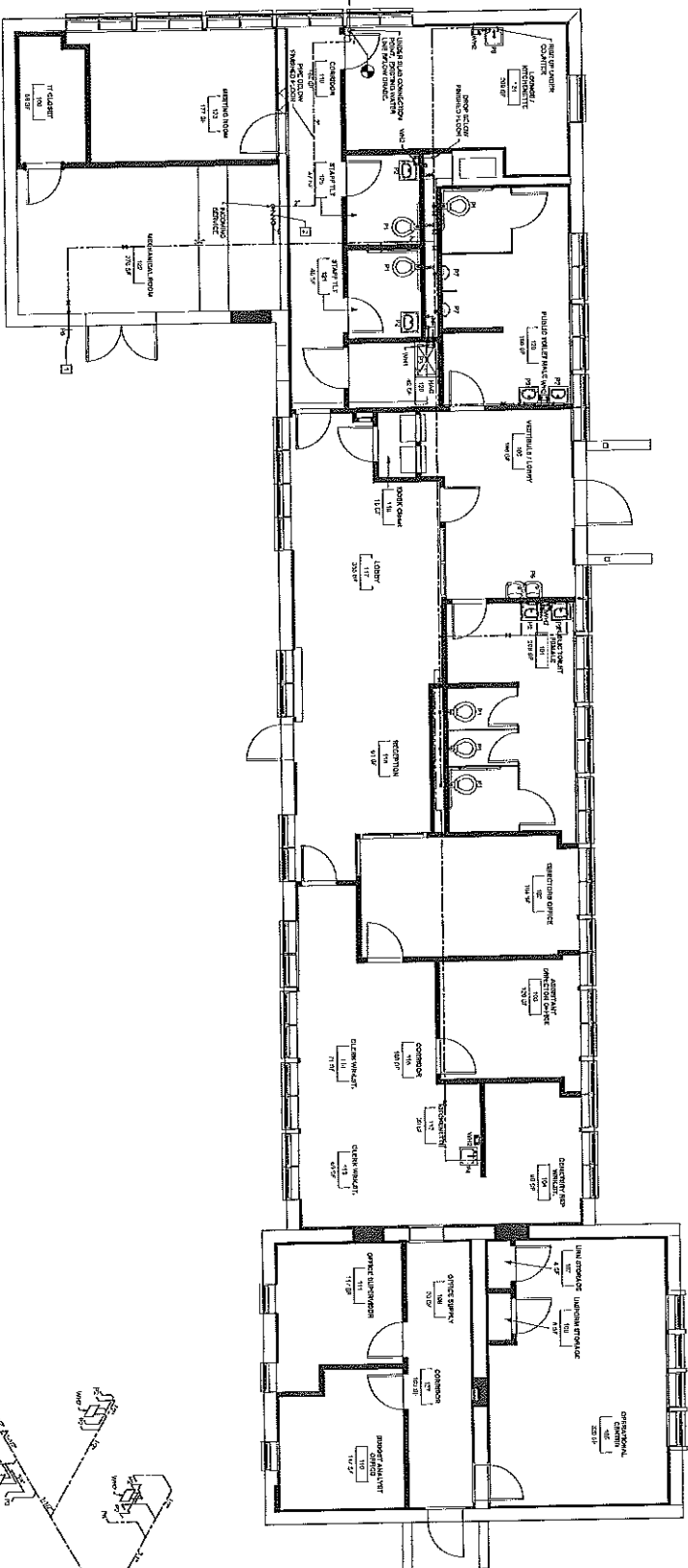
ADMINISTRATOR  
P-2.1

**BID DOCUMENTS**

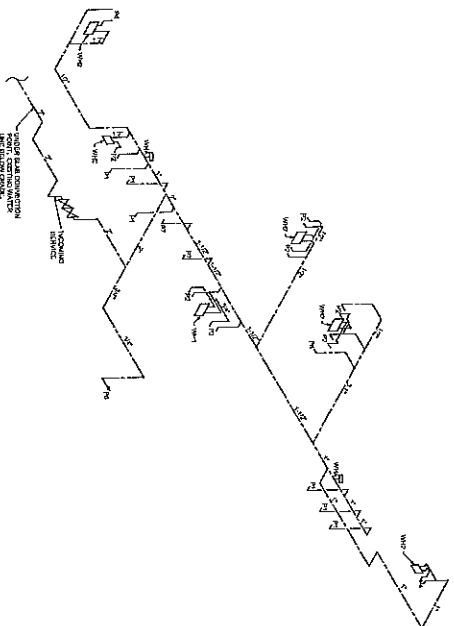
NATIONAL CHARTER  
ADMINISTRATION  
OFFICE OF DESIGN  
AND CONSTRUCTION

1/1/2013 10:00:00 AM

1/1/2013 10:00:00 AM



1 ADMINISTRATION BUILDING DOMESTIC WATER PLAN  
SCALE: 1/8" = 1'-0"



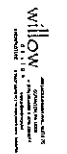
2 DOMESTIC WATER RISER ADMINISTRATION BUILDING  
SCALE: 1/8" = 1'-0"

- GENERAL NOTES**
1. REFER TO SHEET P-2.1 FOR GENERAL NOTES, SPECIFICATIONS, ETC.
  2. SEE WATER SUPPLY FOR ADDITIONAL INFORMATION.
  3. ALL NEW PIPING SHALL BE CONNECTED TO EXISTING MAIN.
  4. CONTRACTOR SHALL VERIFY ALL PIPING LOCATIONS AND CONNECTIONS.

- KEYED NOTES**
- 1. INDICATES LOCATION OF WATER MAINS.
  - 2. INDICATES LOCATION OF WATER MAINS.

# BID DOCUMENTS

CONSULTANTS

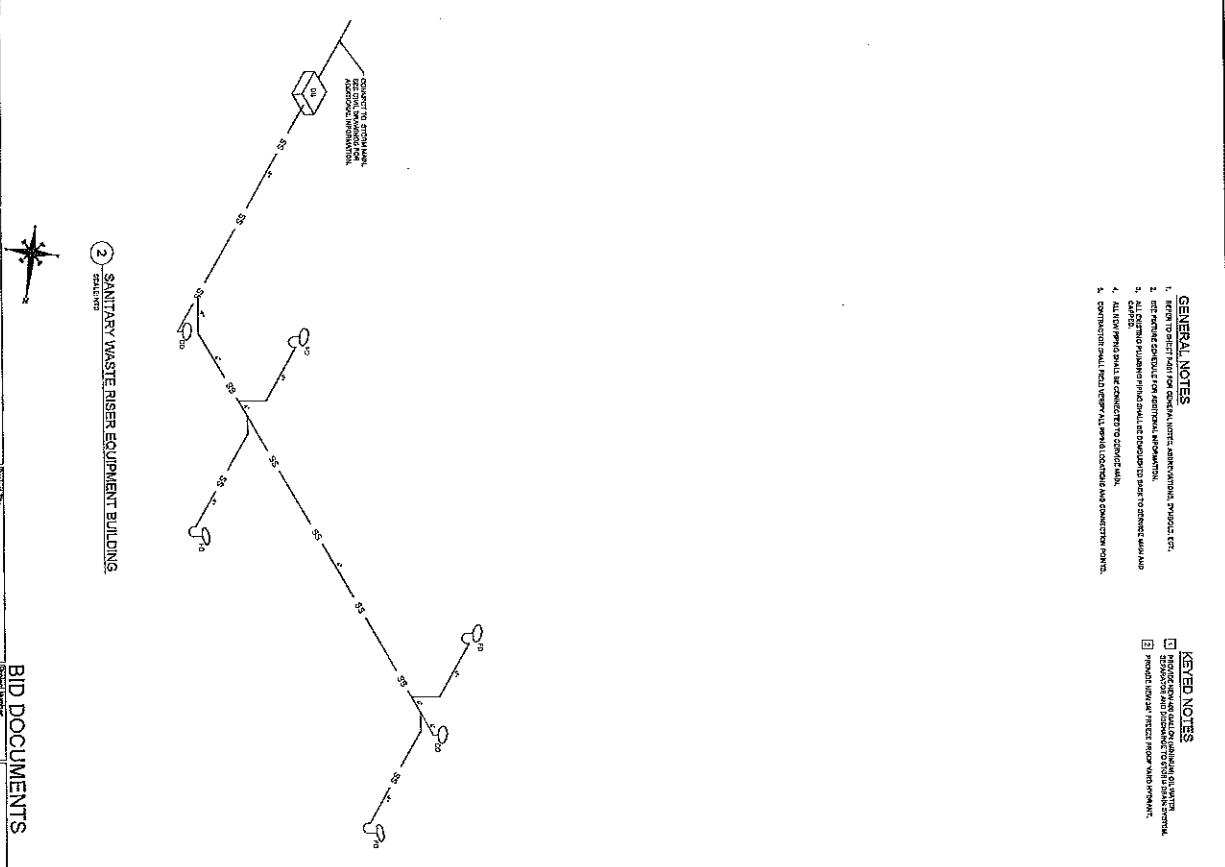


ADMINISTRATION BUILDING  
DOMESTIC WATER PLAN

ADMINISTRATION BUILDING  
DOMESTIC WATER PLAN

NATIONAL CEMENTARY  
ADMINISTRATION  
OFFICE OF DESIGN  
AND CONSTRUCTION

P-2.2



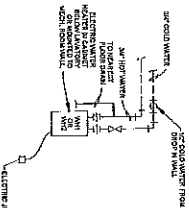
- KEYED NOTES**
- 1 PROVIDE NEW 40 GALLON GALVANNEAL OIL WATER SEPARATOR AND DISCHARGE TO STORM DRAIN STREET
- 2 PROVIDE NEW 24" PESTICE PROOF YARD HYDRAUNT.

BID DOCUMENTS

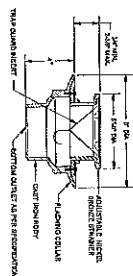
**M.T.R.**  
**LANDSCAPE ARCHITECTS**  
181 Millstone Road, Princeton, PA 08542  
609/953-6600

2 copies, section 81604 3028 Safety Number Drawing Author <b>B 23</b>	<b>NATIONAL CEMETERY          ADMINISTRATION          OFFICE OF DESIGN          AND CONSTRUCTION</b>
-----------------------------------------------------------------------------------	------------------------------------------------------------------------------------------------------------------

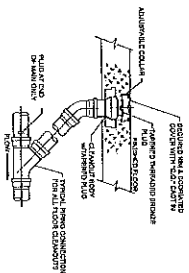




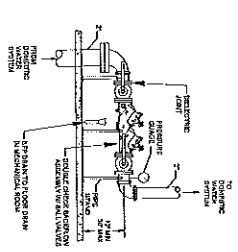
1 INSTANTANEOUS ELECTRIC WATER HEATER  
SCALE: 1/8"



2 TYPICAL FLOOR DRAIN DETAIL  
SCALE: 1/8"=1'-0"



3. INITIALS OF WHOLESALE DEALER  
DEALER: \_\_\_\_\_



4 DOALL N=3






[illegible]

1. WATER HEATER SHALL BE IN RATED.  
2. PROVIDE SELF-CONTAINED ELECTRONIC THERMOSTAT FOR OUTPUT TEMPERATURE CONTROL.

[illegible]

NOTE:  
1. PROVIDE STEEL REINFORCED EXPANDED AC FLUSH VALVE - 1.2M O.P.P.


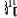
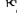


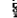
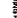


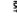
2. PROVIDE WITH GRID DRAIN.
3. 60 GRN PRESSURE COMPENSATING VALVE, RESISTANT SPRAY.
4. PROVIDE AMERICAN STANDARD SOCKETWY1070 - SELECTRONIC THERMOSTATIC MIXING VALVE.
5. PROVIDE WITH 1/2 OPEN FLOW RESTRICTOR.
6. STAINLESS STEEL VALVE FITTING TO 1/2" X 3/4" TPA.
7. PROVIDE PLASTIC MENT TRAP (EAL FOR FLOOR DRAINING).

 <b>Hiland Group</b> 10000 W. 10th Ave., Suite 100 Denver, CO 80202 Tel: 303.733.1100 Fax: 303.733.1101 www.hilandgroup.com		<b>CONSULTANTS:</b>  <b>KCI</b> KCI Construction Inc. 10000 W. 10th Ave., Suite 100 Denver, CO 80202 Tel: 303.733.1100 Fax: 303.733.1101 www.kci.com	
 <b>willow</b> 10000 W. 10th Ave., Suite 100 Denver, CO 80202 Tel: 303.733.1100 Fax: 303.733.1101 www.willow.com		 <b>City of Denver</b> 10000 W. 10th Ave., Suite 100 Denver, CO 80202 Tel: 303.733.1100 Fax: 303.733.1101 www.cityofdenver.com	
<b>ARCHITECT/ENGINEERS:</b>  <b>M.T.R.</b> LANDSCAPE ARCHITECTS 10000 W. 10th Ave., Suite 100 Denver, CO 80202 Tel: 303.733.1100 Fax: 303.733.1101 www.mtr.com		<b>BID DOCUMENTS</b> NATIONAL CENTER ADMINISTRATION OFFICE OF DESIGN AND CONSTRUCTION 10000 W. 10th Ave., Suite 100 Denver, CO 80202 Tel: 303.733.1100 Fax: 303.733.1101 www.nationalcenter.com	
<b>PLUMBING DETAILS AND SCHEDULES</b> 10000 W. 10th Ave., Suite 100 Denver, CO 80202 Tel: 303.733.1100 Fax: 303.733.1101 www.plumbing.com		<b>BID DOCUMENTS</b> NATIONAL CENTER ADMINISTRATION OFFICE OF DESIGN AND CONSTRUCTION 10000 W. 10th Ave., Suite 100 Denver, CO 80202 Tel: 303.733.1100 Fax: 303.733.1101 www.nationalcenter.com	













**Zomba**

[illegible]

## 11

LIGHTING	
 RECESSED	RECESSED MODULAR LIGHTING SYSTEMS: MANY TYPES AVAILABLE
 TRACK	PERMANENTLY MOUNTED TRACKS ARE USED TO SUPPORT DIMMER-ABLE SPOTLIGHTS AND DOWN LIGHTS
 PENDANT	PENDANT LIGHTS HANG FROM WALL, CEILING OR RECESSED TRACKS. CORDS, CHAINS OR RIBBONS ARE USED TO SUSPEND LIGHTS FROM CEILING
 CHANDLIER	CHANDLIER LIGHTS ARE USED TO PROVIDE AMBIENT LIGHTING IN DINING ROOMS, LIVING ROOMS AND BEDROOMS
 CHANDLIER	CHANDLIER LIGHTS ARE USED TO PROVIDE AMBIENT LIGHTING IN DINING ROOMS, LIVING ROOMS AND BEDROOMS
 CHANDLIER	CHANDLIER LIGHTS ARE USED TO PROVIDE AMBIENT LIGHTING IN DINING ROOMS, LIVING ROOMS AND BEDROOMS
 CHANDLIER	CHANDLIER LIGHTS ARE USED TO PROVIDE AMBIENT LIGHTING IN DINING ROOMS, LIVING ROOMS AND BEDROOMS
 CHANDLIER	CHANDLIER LIGHTS ARE USED TO PROVIDE AMBIENT LIGHTING IN DINING ROOMS, LIVING ROOMS AND BEDROOMS
 CHANDLIER	CHANDLIER LIGHTS ARE USED TO PROVIDE AMBIENT LIGHTING IN DINING ROOMS, LIVING ROOMS AND BEDROOMS
 CHANDLIER	CHANDLIER LIGHTS ARE USED TO PROVIDE AMBIENT LIGHTING IN DINING ROOMS, LIVING ROOMS AND BEDROOMS

25000

ON-LINE SYMBOLS	
	ZENER
	DIODE
	GROUND SYMBOL
	RESIST
	CAPACIT
	INDUCT
	POWER PANEL
	LIGHT BULB
	CONNECT NEW TO OLD
	WIRING
	TERMINAL BLOCK
	GROUND

THESE NOTICES APPLY TO ALL ELECTRICAL DEPARTMENTS

- [illegible]

- [illegible]

2004

② CORDA MOUNTED PHOTO DETECTOR  
 VISUAL SILENT CONTROL  
 FIRE ALARM CONTROL PANEL  
 FIRE ALARM REVERSE AMBULANCE PANEL  
 WALL MOUNTED HORN / SIREN  
 WALL MOUNTED SMOKE DETECTOR  
 WALL MOUNTED SMOKE DETECTOR WITH  
 DETECTOR OF INVISIBLE SMOKE DETECTOR  
 COORDINATION PANEL OF FIREMOUNTED THERMAL DETECTOR  
 FIRE NOISE FOR THE REPAIRMENT LEVASSIS

PROVIDE NEW ADDRESSABLE FIRE ALARM CONT.

- [illegible]

**ADRY**  
**ASR**

**-ADDED TONES,**  
**-ALSO FINISHED FLOOR**

[illegible]

—

active security camera  
call recording  
active security camera of living room

\_\_\_\_\_



**Hiranji Group**



11  
12  
13  
14  
15  
16  
17  
18  
19  
20  
21  
22  
23  
24  
25  
26  
27  
28  
29  
30  
31  
32  
33  
34  
35  
36  
37  
38  
39  
40  
41  
42  
43  
44  
45  
46  
47  
48  
49  
50  
51  
52  
53  
54  
55  
56  
57  
58  
59  
60  
61  
62  
63  
64  
65  
66  
67  
68  
69  
70  
71  
72  
73  
74  
75  
76  
77  
78  
79  
80  
81  
82  
83  
84  
85  
86  
87  
88  
89  
90  
91  
92  
93  
94  
95  
96  
97  
98  
99  
100  
101  
102  
103  
104  
105  
106  
107  
108  
109  
110  
111  
112  
113  
114  
115  
116  
117  
118  
119  
120  
121  
122  
123  
124  
125  
126  
127  
128  
129  
130  
131  
132  
133  
134  
135  
136  
137  
138  
139  
140  
141  
142  
143  
144  
145  
146  
147  
148  
149  
150  
151  
152  
153  
154  
155  
156  
157  
158  
159  
160  
161  
162  
163  
164  
165  
166  
167  
168  
169  
170  
171  
172  
173  
174  
175  
176  
177  
178  
179  
180  
181  
182  
183  
184  
185  
186  
187  
188  
189  
190  
191  
192  
193  
194  
195  
196  
197  
198  
199  
200  
201  
202  
203  
204  
205  
206  
207  
208  
209  
210  
211  
212  
213  
214  
215  
216  
217  
218  
219  
220  
221  
222  
223  
224  
225  
226  
227  
228  
229  
230  
231  
232  
233  
234  
235  
236  
237  
238  
239  
240  
241  
242  
243  
244  
245  
246  
247  
248  
249  
250  
251  
252  
253  
254  
255  
256  
257  
258  
259  
260  
261  
262  
263  
264  
265  
266  
267  
268  
269  
270  
271  
272  
273  
274  
275  
276  
277  
278  
279  
280  
281  
282  
283  
284  
285  
286  
287  
288  
289  
290  
291  
292  
293  
294  
295  
296  
297  
298  
299  
300  
301  
302  
303  
304  
305  
306  
307  
308  
309  
310  
311  
312  
313  
314  
315  
316  
317  
318  
319  
320  
321  
322  
323  
324  
325  
326  
327  
328  
329  
330  
331  
332  
333  
334  
335  
336  
337  
338  
339  
340  
341  
342  
343  
344  
345  
346  
347  
348  
349  
350  
351  
352  
353  
354  
355  
356  
357  
358  
359  
360  
361  
362  
363  
364  
365  
366  
367  
368  
369  
370  
371  
372  
373  
374  
375  
376  
377  
378  
379  
380  
381  
382  
383  
384  
385  
386  
387  
388  
389  
390  
391  
392  
393  
394  
395  
396  
397  
398  
399  
400  
401  
402  
403  
404  
405  
406  
407  
408  
409  
410  
411  
412  
413  
414  
415  
416  
417  
418  
419  
420  
421  
422  
423  
424  
425  
426  
427  
428  
429  
430  
431  
432  
433  
434  
435  
436  
437  
438  
439  
440  
441  
442  
443  
444  
445  
446  
447  
448  
449  
450  
451  
452  
453  
454  
455  
456  
457  
458  
459  
460  
461  
462  
463  
464  
465  
466  
467  
468  
469  
470  
471  
472  
473  
474  
475  
476  
477  
478  
479  
480  
481  
482  
483  
484  
485  
486  
487  
488  
489  
490  
491  
492  
493  
494  
495  
496  
497  
498  
499  
500  
501  
502  
503  
504  
505  
506  
507  
508  
509  
510  
511  
512  
513  
514  
515  
516  
517  
518  
519  
520  
521  
522  
523  
524  
525  
526  
527  
528  
529  
530  
531  
532  
533  
534  
535  
536  
537  
538  
539  
540  
541  
542  
543  
544  
545  
546  
547  
548  
549  
550  
551  
552  
553  
554  
555  
556  
557  
558  
559  
560  
561  
562  
563  
564  
565  
566  
567  
568  
569  
570  
571  
572  
573  
574  
575  
576  
577  
578  
579  
580  
581  
582  
583  
584  
585  
586  
587  
588  
589  
590  
591  
592  
593  
594  
595  
596  
597  
598  
599  
600  
601  
602  
603  
604  
605  
606  
607  
608  
609  
610  
611  
612  
613  
614  
615  
616  
617  
618  
619  
620  
621  
622  
623  
624  
625  
626  
627  
628  
629  
630  
631  
632  
633  
634  
635  
636  
637  
638  
639  
640  
641  
642  
643  
644  
645  
646  
647  
648  
649  
650  
651  
652  
653  
654  
655  
656  
657  
658  
659  
660  
661  
662  
663  
664  
665  
666  
667  
668  
669  
670  
671  
672  
673  
674  
675  
676  
677  
678  
679  
680  
681  
682  
683  
684  
685  
686  
687  
688  
689  
690  
691  
692  
693  
694  
695  
696  
697  
698  
699  
700  
701  
702  
703  
704  
705  
706  
707  
708  
709  
710  
711  
712  
713  
714  
715  
716  
717  
718  
719  
720  
721  
722  
723  
724  
725  
726  
727  
728  
729  
730  
731  
732  
733  
734  
735  
736  
737  
738  
739  
740  
741  
742  
743  
744  
745  
746  
747  
748  
749  
750  
751  
752  
753  
754  
755  
756  
757  
758  
759  
760  
761  
762  
763  
764  
765  
766  
767  
768  
769  
770  
771  
772  
773  
774  
775  
776  
777  
778  
779  
780  
781  
782  
783  
784  
785  
786  
787  
788  
789  
790  
791  
792  
793  
794  
795  
796  
797  
798  
799  
800  
801  
802  
803  
804  
805  
806  
807  
808  
809  
810  
811  
812  
813  
814  
815  
816  
817  
818  
819  
820  
821  
822  
823  
824  
825  
826  
827  
828  
829  
830  
831  
832  
833  
834  
835  
836  
837  
838  
839  
840  
841  
842  
843  
844  
845  
846  
847

willow



100



LANDSCAPE ARCHITECTS  
42211 Parkway • Suite 200 • York, PA 17403  
(717) 765-1000

## SYMBOLS, AND ABBREVIATIONS

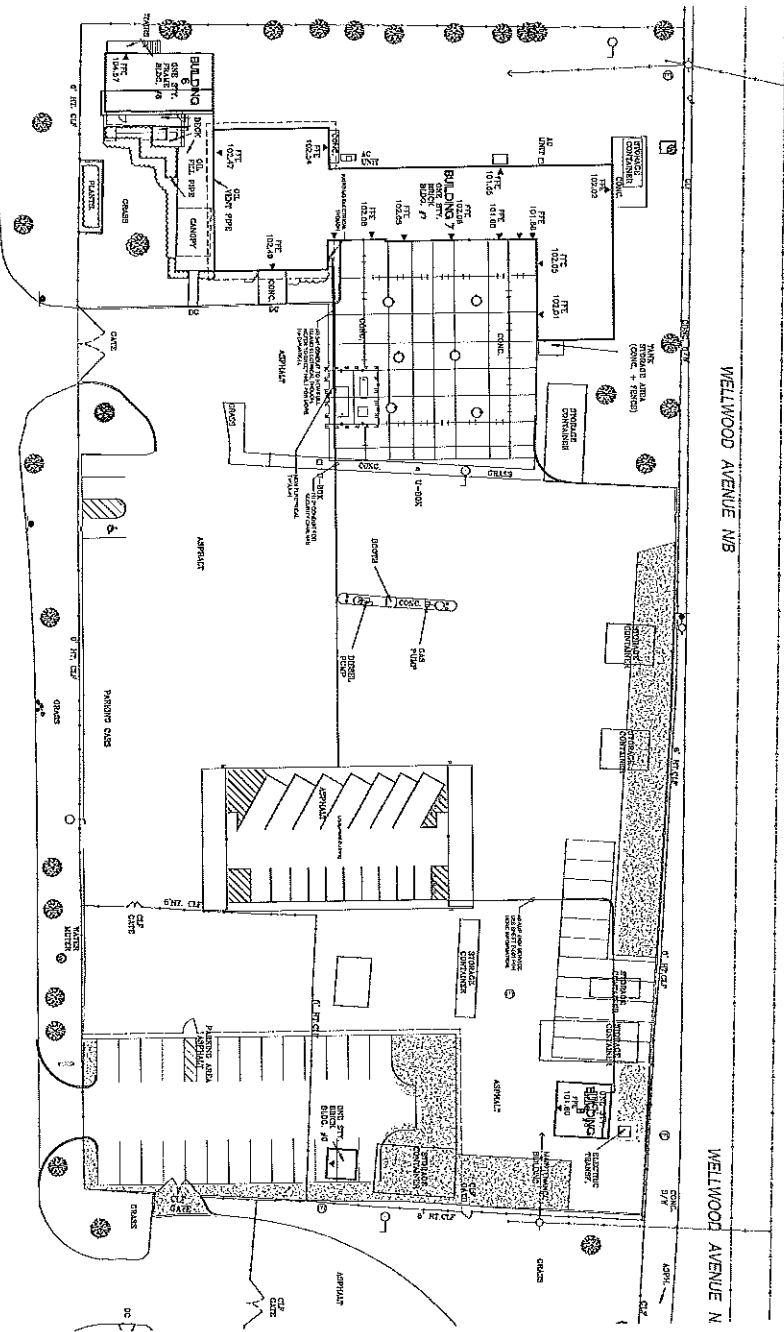
**Product Director**

Project Number 11/0001/2011	NATIONAL CENTER
--------------------------------	-----------------

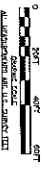
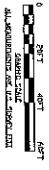
**Administration / Public Restroom  
Renovations and  
New Equipment Storage Building**

8100H 3035	NATIONAL CEMETERY ADMINISTRATION OFFICE OF DESIGN AND CONSTRUCTION
Building Number	
Ordering Number	

KEYED NOTES  
 RECONNECT WAREHOUSE AND WAREHOUSE TO EXISTING TRUNK LINE AND  
 REINSTALL.



1 ELECTRICAL SITE PLAN



CONSULTANTS



ARCHITECT/ENGINEERS

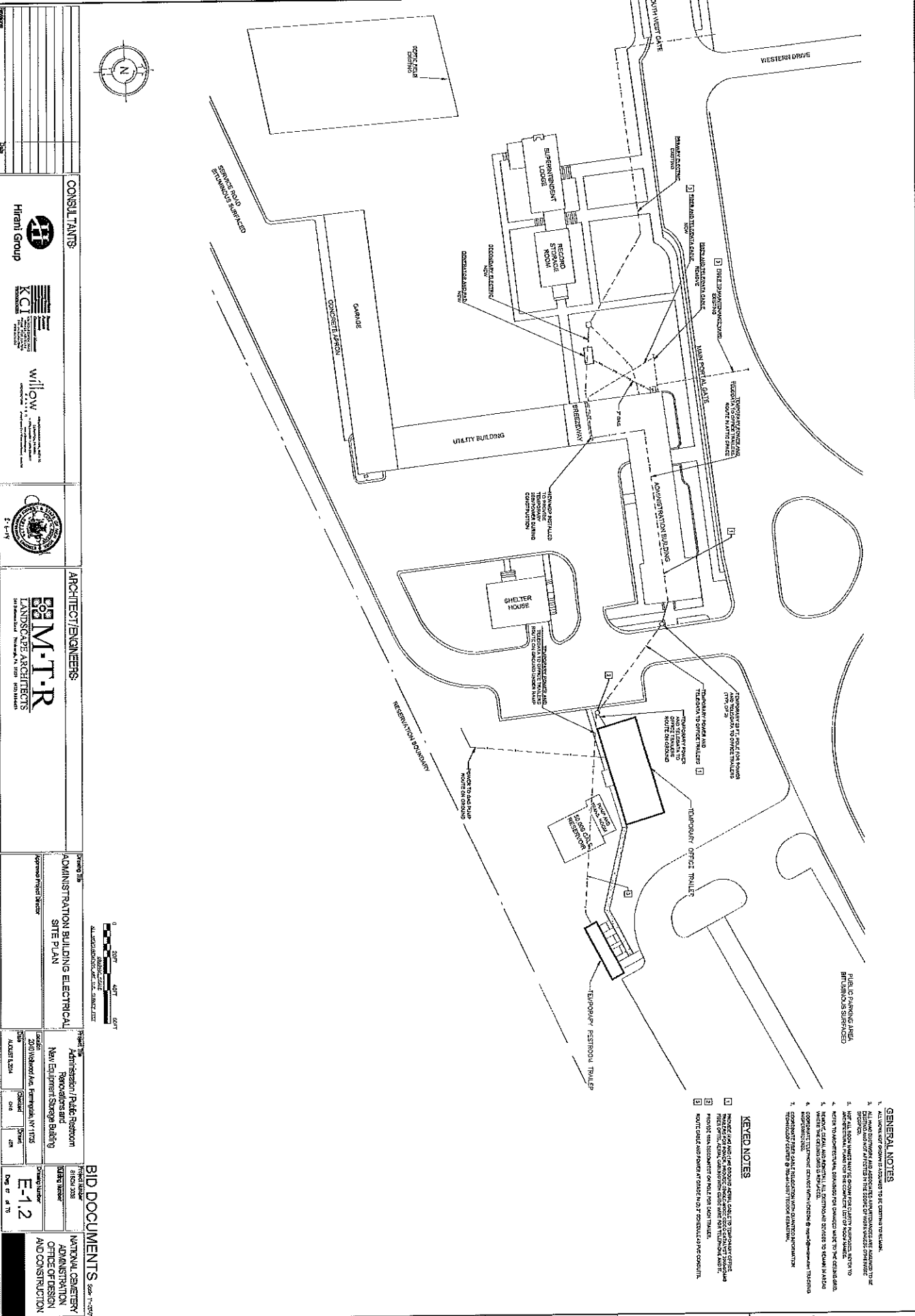


EQUIPMENT BUILDING ELECTRICAL SITE PLAN

Project No.  
 Administration / Public Relations  
 New Equipment Storage Building  
 3400 Westchester Farmway, NY 11755

Sheet No.  
 E-1.1

NATIONAL CEMETERY  
 ADMINISTRATION  
 OFFICE OF DESIGN  
 AND CONSTRUCTION



CONSULTANTS



willow



**M.T.R.**  
LANDSCAPE ARCHITECTS  
200 Riverside Drive, Suite 200  
New York, NY 10012

ARCHITECT/ENGINEERS

ADMINISTRATION BUILDING ELECTRICAL  
SITE PLAN

ADMINISTRATOR / Public Relations  
Receptionist  
New Equipment Storage Building

BID DOCUMENTS

NATIONAL CATERING  
ADMINISTRATION  
OFFICE OF PERSON  
AND CONSTRUCTION

Scale: 1"=20'

11/11/11

11/11/11

[illegible]

- [illegible]

ADMINISTRATION  
OFFICE OF DESIGN

## BID DOCUMENTS

## AND CONSTRUCTION

eighths inch = one foot  
 one quarter inch = one foot  
 four eighths inch = one foot  
 one half inch = one foot  
 three quarters inch = one foot  
 one inch = one foot  
 one and one half inches = one foot

eighth notes  
 quarter notes  
 eighth notes and half note  
 half notes  
 quarter notes and half note  
 quarter notes and half note and quarter note  
 quarter notes and half note and quarter note

1  
 2  
 3  
 4  
 5  
 6  
 7  
 8  
 9  
 10  
 11  
 12  
 13  
 14  
 15  
 16  
 17  
 18  
 19  
 20  
 21  
 22  
 23  
 24  
 25  
 26  
 27  
 28  
 29  
 30  
 31  
 32  
 33  
 34  
 35  
 36  
 37  
 38  
 39  
 40  
 41  
 42  
 43  
 44  
 45  
 46  
 47  
 48  
 49  
 50  
 51  
 52  
 53  
 54  
 55  
 56  
 57  
 58  
 59  
 60  
 61  
 62  
 63  
 64  
 65  
 66  
 67  
 68  
 69  
 70  
 71  
 72  
 73  
 74  
 75  
 76  
 77  
 78  
 79  
 80  
 81  
 82  
 83  
 84  
 85  
 86  
 87  
 88  
 89  
 90  
 91  
 92  
 93  
 94  
 95  
 96  
 97  
 98  
 99  
 100

1  
 2  
 3  
 4  
 5  
 6  
 7  
 8  
 9  
 10  
 11  
 12  
 13  
 14  
 15  
 16  
 17  
 18  
 19  
 20  
 21  
 22  
 23  
 24  
 25  
 26  
 27  
 28  
 29  
 30  
 31  
 32  
 33  
 34  
 35  
 36  
 37  
 38  
 39  
 40  
 41  
 42  
 43  
 44  
 45  
 46  
 47  
 48  
 49  
 50  
 51  
 52  
 53  
 54  
 55  
 56  
 57  
 58  
 59  
 60  
 61  
 62  
 63  
 64  
 65  
 66  
 67  
 68  
 69  
 70  
 71  
 72  
 73  
 74  
 75  
 76  
 77  
 78  
 79  
 80  
 81  
 82  
 83  
 84  
 85  
 86  
 87  
 88  
 89  
 90  
 91  
 92  
 93  
 94  
 95  
 96  
 97  
 98  
 99  
 100

1  
 2  
 3  
 4  
 5  
 6  
 7  
 8  
 9  
 10  
 11  
 12  
 13  
 14  
 15  
 16  
 17  
 18  
 19  
 20  
 21  
 22  
 23  
 24  
 25  
 26  
 27  
 28  
 29  
 30  
 31  
 32  
 33  
 34  
 35  
 36  
 37  
 38  
 39  
 40  
 41  
 42  
 43  
 44  
 45  
 46  
 47  
 48  
 49  
 50  
 51  
 52  
 53  
 54  
 55  
 56  
 57  
 58  
 59  
 60  
 61  
 62  
 63  
 64  
 65  
 66  
 67  
 68  
 69  
 70  
 71  
 72  
 73  
 74  
 75  
 76  
 77  
 78  
 79  
 80  
 81  
 82  
 83  
 84  
 85  
 86  
 87  
 88  
 89  
 90  
 91  
 92  
 93  
 94  
 95  
 96  
 97  
 98  
 99  
 100

1  
 2  
 3  
 4  
 5  
 6  
 7  
 8  
 9  
 10  
 11  
 12  
 13  
 14  
 15  
 16  
 17  
 18  
 19  
 20  
 21  
 22  
 23  
 24  
 25  
 26  
 27  
 28  
 29  
 30  
 31  
 32  
 33  
 34  
 35  
 36  
 37  
 38  
 39  
 40  
 41  
 42  
 43  
 44  
 45  
 46  
 47  
 48  
 49  
 50  
 51  
 52  
 53  
 54  
 55  
 56  
 57  
 58  
 59  
 60  
 61  
 62  
 63  
 64  
 65  
 66  
 67  
 68  
 69  
 70  
 71  
 72  
 73  
 74  
 75  
 76  
 77  
 78  
 79  
 80  
 81  
 82  
 83  
 84  
 85  
 86  
 87  
 88  
 89  
 90  
 91  
 92  
 93  
 94  
 95  
 96  
 97  
 98  
 99  
 100

1  
 2  
 3  
 4  
 5  
 6  
 7  
 8  
 9  
 10  
 11  
 12  
 13  
 14  
 15  
 16  
 17  
 18  
 19  
 20  
 21  
 22  
 23  
 24  
 25  
 26  
 27  
 28  
 29  
 30  
 31  
 32  
 33  
 34  
 35  
 36  
 37  
 38  
 39  
 40  
 41  
 42  
 43  
 44  
 45  
 46  
 47  
 48  
 49  
 50  
 51  
 52  
 53  
 54  
 55  
 56  
 57  
 58  
 59  
 60  
 61  
 62  
 63  
 64  
 65  
 66  
 67  
 68  
 69  
 70  
 71  
 72  
 73  
 74  
 75  
 76  
 77  
 78  
 79  
 80  
 81  
 82  
 83  
 84  
 85  
 86  
 87  
 88  
 89  
 90  
 91  
 92  
 93  
 94  
 95  
 96  
 97  
 98  
 99  
 100

1  
 2  
 3  
 4  
 5  
 6  
 7  
 8  
 9  
 10  
 11  
 12  
 13  
 14  
 15  
 16  
 17  
 18  
 19  
 20  
 21  
 22  
 23  
 24  
 25  
 26  
 27  
 28  
 29  
 30  
 31  
 32  
 33  
 34  
 35  
 36  
 37  
 38  
 39  
 40  
 41  
 4



# 1 ADMINISTRATION BUILDING ELECTRICAL POWER PLAN

- ## KEYED NOTES

1. PROPOSER HAS COLLABORATED WITH RESEARCHERS IN THE U.S. AND ABROAD.
2. PROPOSER HAS COLLABORATED WITH RESEARCHERS IN THE U.S. AND ABROAD, BUT NOT IN THE U.S. AND ABROAD.
3. PROPOSER HAS COLLABORATED WITH RESEARCHERS IN THE U.S. AND ABROAD, BUT NOT IN THE U.S. AND ABROAD.
4. PROPOSER HAS COLLABORATED WITH RESEARCHERS IN THE U.S. AND ABROAD, BUT NOT IN THE U.S. AND ABROAD.
5. PROPOSER HAS COLLABORATED WITH RESEARCHERS IN THE U.S. AND ABROAD, BUT NOT IN THE U.S. AND ABROAD.
6. PROPOSER HAS COLLABORATED WITH RESEARCHERS IN THE U.S. AND ABROAD, BUT NOT IN THE U.S. AND ABROAD.
7. PROPOSER HAS COLLABORATED WITH RESEARCHERS IN THE U.S. AND ABROAD, BUT NOT IN THE U.S. AND ABROAD.
8. PROPOSER HAS COLLABORATED WITH RESEARCHERS IN THE U.S. AND ABROAD, BUT NOT IN THE U.S. AND ABROAD.
9. PROPOSER HAS COLLABORATED WITH RESEARCHERS IN THE U.S. AND ABROAD, BUT NOT IN THE U.S. AND ABROAD.
10. PROPOSER HAS COLLABORATED WITH RESEARCHERS IN THE U.S. AND ABROAD, BUT NOT IN THE U.S. AND ABROAD.

- ## GENERAL NOTES

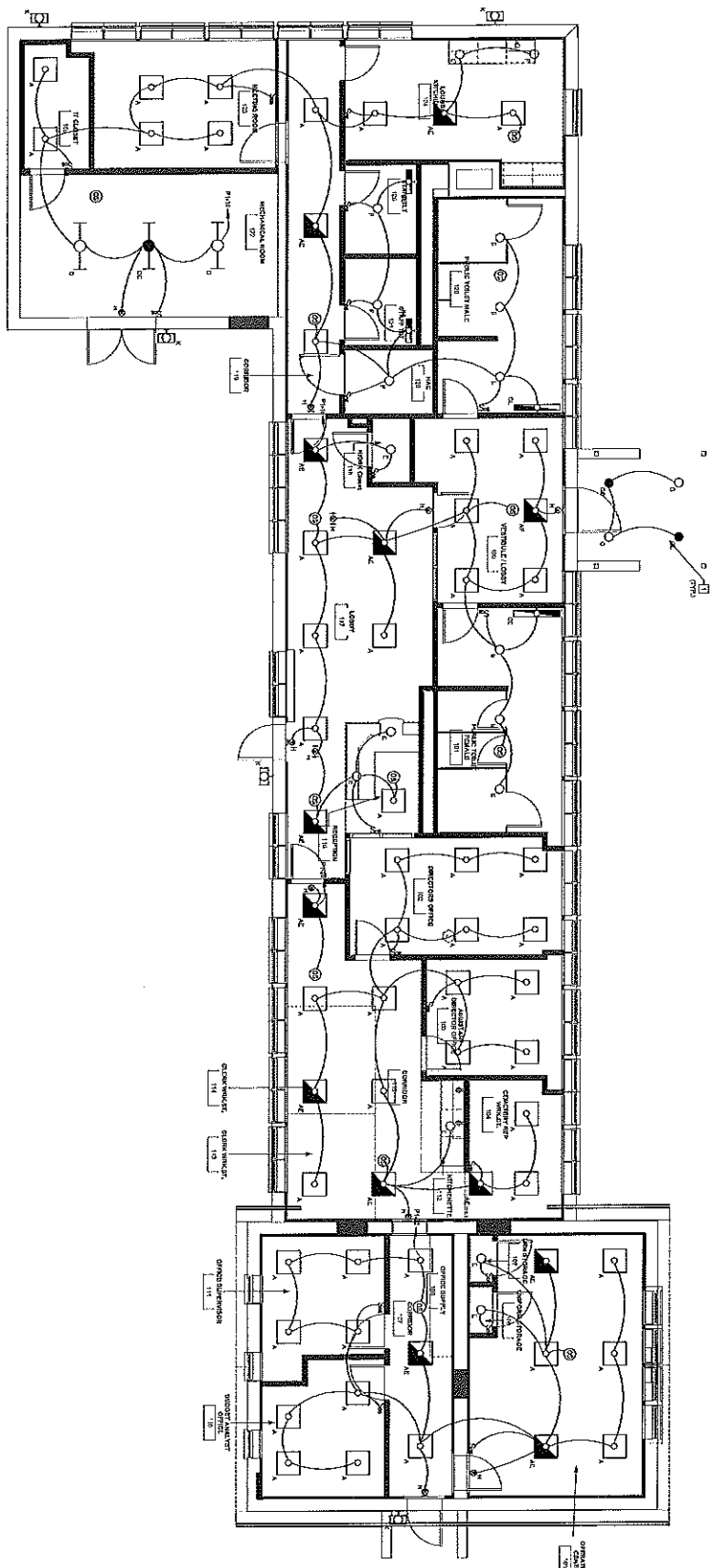
1. ALL AIRWAYS SHALL BE CONDUCTED IN PRESSED AERIAL CONDUIT MOUNTED EXCEPT AS ALLOWED IN THE TECHNICAL ROOM ONLY.
2. RECONNECTOR SHALL VERIFY LOCATION OF THE FOLLOWING CIRCUITS AND CONNECT TO THE NEW POWER DISTRIBUTION SYSTEM:
  - A. AIR HANDLING LOOPS
  - B. VENTILATION BUILDING A QUADRO
  - C. SMALL TIER HOUSE
  - D. ELEC. LOADING
3. REFER TO DIRECT P&I, NON CONDUCTOR AND CONDUIT DEPENDENCIES OTHERWISE NOTED.

## BID DOCUMENTS

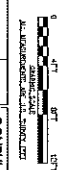
[illegible]

# KEYED NOTES

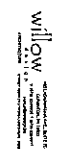
1. GENERAL NOTES
2. GENERAL NOTES
3. GENERAL NOTES
4. GENERAL NOTES



1 ADMINISTRATION BUILDING ELECTRICAL LIGHTING PLAN



## CONSULTANTS



## ARCHITECT/ENGINEERS



## ADMINISTRATION BUILDING ELECTRICAL LIGHTING PLAN

Approved Project Director

Project Engineer

Project Engineer

Project Engineer

## BID DOCUMENTS

NATIONAL CEMETERY  
ADMINISTRATION  
OFFICE OF DESIGN  
AND CONSTRUCTION

Project Engineer

Project Engineer

Project Engineer

Project Engineer

Project Engineer

Project Engineer

Project Engineer

Project Engineer

Project Engineer

Project Engineer

Project Engineer

Project Engineer

Project Engineer

Project Engineer

Project Engineer

Project Engineer

Project Engineer

Project Engineer

Project Engineer

Project Engineer

Project Engineer

Project Engineer

Project Engineer

Project Engineer

Project Engineer

Project Engineer

Project Engineer

Project Engineer

Project Engineer

Project Engineer

Project Engineer

Project Engineer

Project Engineer

Project Engineer

Project Engineer

Project Engineer

Project Engineer

Project Engineer

Project Engineer

Project Engineer

Project Engineer

Project Engineer

Project Engineer

Project Engineer

Project Engineer

Project Engineer

Project Engineer

Project Engineer

Project Engineer

Project Engineer

Project Engineer

Project Engineer

Project Engineer

Project Engineer

Project Engineer

Project Engineer

Project Engineer

Project Engineer

Project Engineer

Project Engineer

Project Engineer

Project Engineer

Project Engineer

Project Engineer

Project Engineer

Project Engineer

Project Engineer

Project Engineer

Project Engineer

Project Engineer

Project Engineer

Project Engineer

Project Engineer

Project Engineer

Project Engineer

Project Engineer

Project Engineer

Project Engineer

Project Engineer

Project Engineer

Project Engineer

Project Engineer

Project Engineer

Project Engineer

Project Engineer

Project Engineer

Project Engineer

Project Engineer

Project Engineer

Project Engineer

Project Engineer

Project Engineer

Project Engineer

Project Engineer

Project Engineer

Project Engineer

Project Engineer

Project Engineer

Project Engineer

Project Engineer

Project Engineer

Project Engineer

Project Engineer

Project Engineer

Project Engineer

Project Engineer

Project Engineer

Project Engineer

Project Engineer

Project Engineer

Project Engineer

Project Engineer

Project Engineer

Project Engineer

Project Engineer

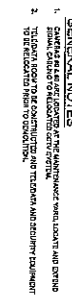
Project Engineer

Project Engineer

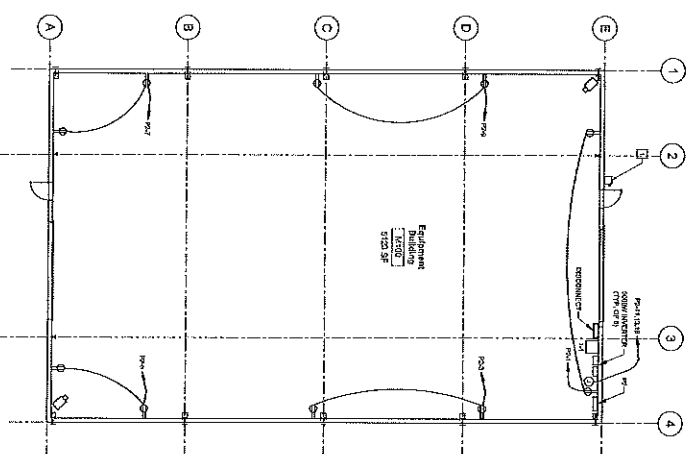
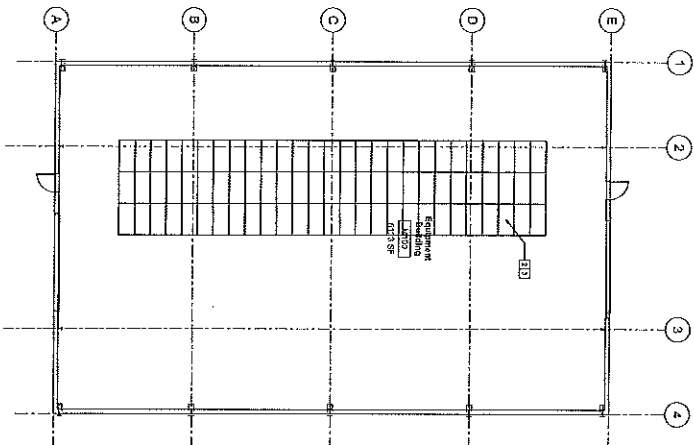
Project Engineer

Project Engineer

Project Engineer

[illegible]



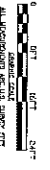


**KEYED NOTES**

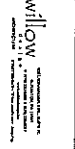
- 1. POWER TO BE RECONNECTED FOR SOLAR PANELS.
- 2. POWER TO BE RECONNECTED FOR SOLAR PANELS.
- 3. POWER TO BE RECONNECTED FOR SOLAR PANELS.
- 4. POWER TO BE RECONNECTED FOR SOLAR PANELS.

1 ELECTRICAL POWER PLAN EQUIPMENT BUILDING  
SCALE: 1/8" = 1'-0"

2 ELECTRICAL POWER PLAN EQUIPMENT BUILDING  
SCALE: 1/8" = 1'-0"



**CONSULTANTS**



**ARCHITECT/ENGINEERS**



**EQUIPMENT BUILDING ELECTRICAL POWER PLAN**

Approved Project Review  
Location  
2000 Midwood Ave. Farmville, VA 22430  
August 1, 2014

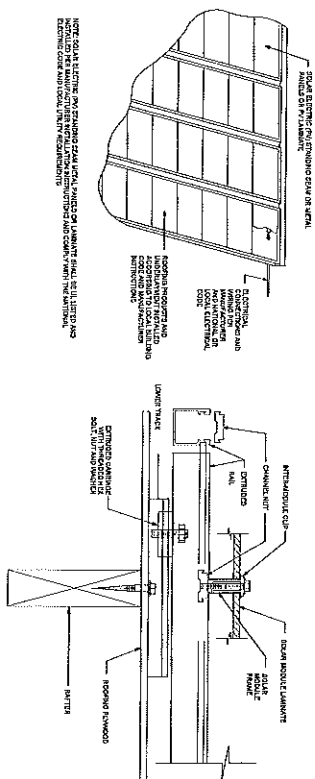
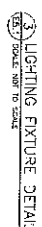
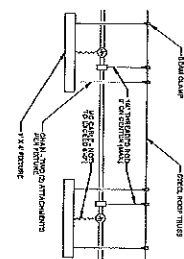
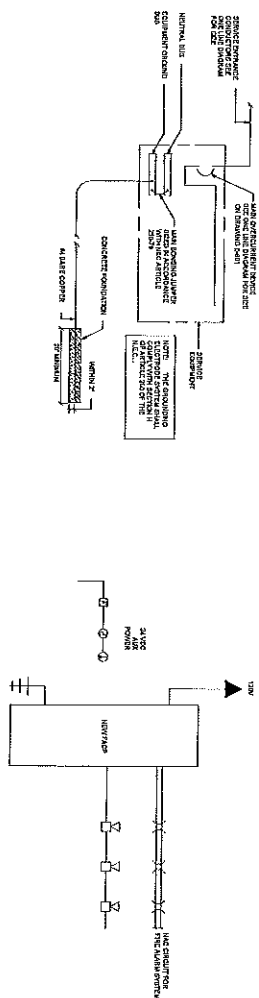
**BID DOCUMENTS**









Administration / High-Rise  
Renovations and  
New Equipment Storage Building  
Drawing Number  
E-2.4  
Page 11 of 15

NATIONAL GRANITE  
ADMINISTRATION  
OFFICE OF DESIGN  
AND CONSTRUCTION







CONSULTANTS		ARCHITECT/ENGINEERS		BIDD DOCUMENTS	
 Hifant Group		 E&M-T-R		 NATIONAL CEMETERY ADMINISTRATION OFFICE OF DESIGN AND CONSTRUCTION	
 KCI		 willow		 E-5.1	
 Seal of the National Cemetery Administration		 Seal of the National Cemetery Administration		 Seal of the National Cemetery Administration	
 Seal of the National Cemetery Administration		 Seal of the National Cemetery Administration		 Seal of the National Cemetery Administration	
 Seal of the National Cemetery Administration		 Seal of the National Cemetery Administration		 Seal of the National Cemetery Administration	
 Seal of the National Cemetery Administration		 Seal of the National Cemetery Administration		 Seal of the National Cemetery Administration	
 Seal of the National Cemetery Administration		 Seal of the National Cemetery Administration		 Seal of the National Cemetery Administration	
 Seal of the National Cemetery Administration		 Seal of the National Cemetery Administration		 Seal of the National Cemetery Administration	
 Seal of the National Cemetery Administration		 Seal of the National Cemetery Administration		 Seal of the National Cemetery Administration	
 Seal of the National Cemetery Administration		 Seal of the National Cemetery Administration		 Seal of the National Cemetery Administration	



