

| Note Number | Description |
|-------------|--|
| 1 | Remove existing door and frame in their entirety. In masonry walls, all structural elements to remain. The contractor shall be responsible for hazardous materials removal. |
| 2 | Remove existing floor and frame in their entirety. All structural elements to remain. The existing walls need to be removed down to bare masonry. Down to bare masonry, refer to addendum 1 for contractor responsibilities for hazardous materials removal. |
| 3 | Remove existing plaster/GWB ceiling and ceiling mounted device in their entirety. |
| 4 | Remove existing plaster/GWB ceiling and ceiling mounted device in their entirety. |
| 5 | Remove existing plaster/GWB ceiling and ceiling mounted device in their entirety. |
| 6 | Remove existing plaster/GWB ceiling and ceiling mounted device in their entirety. |
| 7 | Remove existing plaster/GWB ceiling and ceiling mounted device in their entirety. |
| 8 | Remove existing plaster/GWB ceiling and ceiling mounted device in their entirety. |
| 9 | Remove existing plaster/GWB ceiling and ceiling mounted device in their entirety. |
| 10 | Remove existing plaster/GWB ceiling and ceiling mounted device in their entirety. |
| 11 | Remove existing plaster/GWB ceiling and ceiling mounted device in their entirety. |
| 12 | Remove existing plaster/GWB ceiling and ceiling mounted device in their entirety. |
| 13 | Remove existing plaster/GWB ceiling and ceiling mounted device in their entirety. |
| 14 | Remove existing plaster/GWB ceiling and ceiling mounted device in their entirety. |
| 15 | Remove existing plaster/GWB ceiling and ceiling mounted device in their entirety. |
| 16 | Remove existing plaster/GWB ceiling and ceiling mounted device in their entirety. |
| 17 | Remove existing plaster/GWB ceiling and ceiling mounted device in their entirety. |
| 18 | Remove existing plaster/GWB ceiling and ceiling mounted device in their entirety. |
| 19 | Remove existing plaster/GWB ceiling and ceiling mounted device in their entirety. |

Demolition Plan General Notes:

1. Refer to addendum 1 for contractor responsibilities for hazardous materials removal.

2. Refer to addendum 1 for contractor responsibilities for hazardous materials removal.

3. Refer to addendum 1 for contractor responsibilities for hazardous materials removal.

4. Refer to addendum 1 for contractor responsibilities for hazardous materials removal.

5. Refer to addendum 1 for contractor responsibilities for hazardous materials removal.

6. Refer to addendum 1 for contractor responsibilities for hazardous materials removal.

7. Refer to addendum 1 for contractor responsibilities for hazardous materials removal.

8. Refer to addendum 1 for contractor responsibilities for hazardous materials removal.

9. Refer to addendum 1 for contractor responsibilities for hazardous materials removal.

10. Refer to addendum 1 for contractor responsibilities for hazardous materials removal.

11. Refer to addendum 1 for contractor responsibilities for hazardous materials removal.

12. Refer to addendum 1 for contractor responsibilities for hazardous materials removal.

13. Refer to addendum 1 for contractor responsibilities for hazardous materials removal.

14. Refer to addendum 1 for contractor responsibilities for hazardous materials removal.

15. Refer to addendum 1 for contractor responsibilities for hazardous materials removal.

16. Refer to addendum 1 for contractor responsibilities for hazardous materials removal.

17. Refer to addendum 1 for contractor responsibilities for hazardous materials removal.

18. Refer to addendum 1 for contractor responsibilities for hazardous materials removal.

19. Refer to addendum 1 for contractor responsibilities for hazardous materials removal.

CONSULTANTS:

ARCHITECT/ENGINEERS:

Project No:

2040 Welwood Ave. Farmingdale, NY 11735

Project Name:

New Equipment Storage Building

Project Location:

2040 Welwood Ave. Farmingdale, NY 11735

Project Date:

AUGUST 14, 2014

Project Status:

RFI

Project Manager:

DAVID J. HIRANI

Project Engineer:

DAVID J. HIRANI

Project Designer:

DAVID J. HIRANI

Project Checker:

DAVID J. HIRANI

Project Approver:

DAVID J. HIRANI

Project Seal:

DAVID J. HIRANI

Project Stamp:

DAVID J. HIRANI

Project Signature:

DAVID J. HIRANI

Project Title:

DAVID J. HIRANI

Project Address:

2040 Welwood Ave. Farmingdale, NY 11735

Project Phone:

516.334.1111

Project Email:

info@mt-r.com

Project Website:

www.mt-r.com

Project Social Media:

www.mt-r.com

Project LinkedIn:

www.mt-r.com

Project Facebook:

www.mt-r.com

Project Twitter:

www.mt-r.com

Project Instagram:

www.mt-r.com

Project YouTube:

www.mt-r.com

Project SoundCloud:

www.mt-r.com

Project Dribbble:

www.mt-r.com

Project Behance:

www.mt-r.com

Project DeviantArt:

www.mt-r.com

Project ArtStation:

www.mt-r.com

Project Sketchfab:

www.mt-r.com

Project Thingiverse:

www.mt-r.com

Project Formlabs:

www.mt-r.com

Project MyMiniFactory:

www.mt-r.com

Project Printables:

www.mt-r.com

Project Cults3D:

www.mt-r.com

Project Thingiverse:

www.mt-r.com

Project Formlabs:

www.mt-r.com

Project MyMiniFactory:

www.mt-r.com

Project Printables:

www.mt-r.com

Project Cults3D:

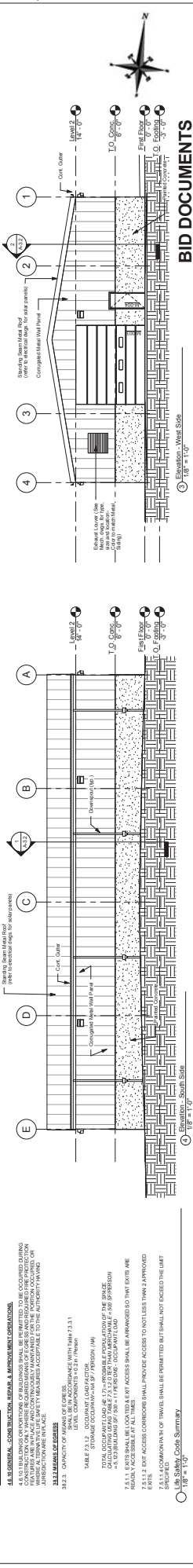
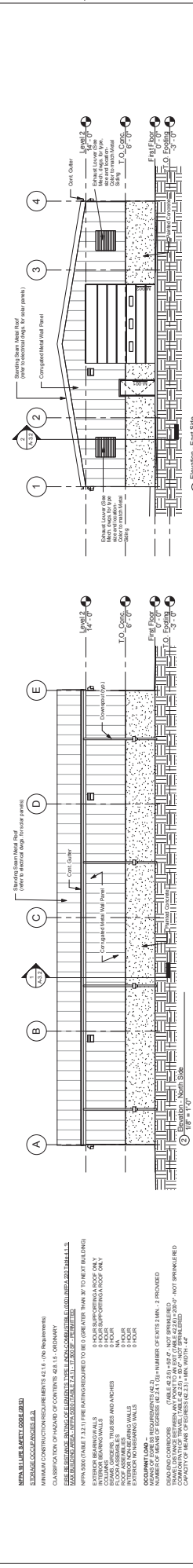
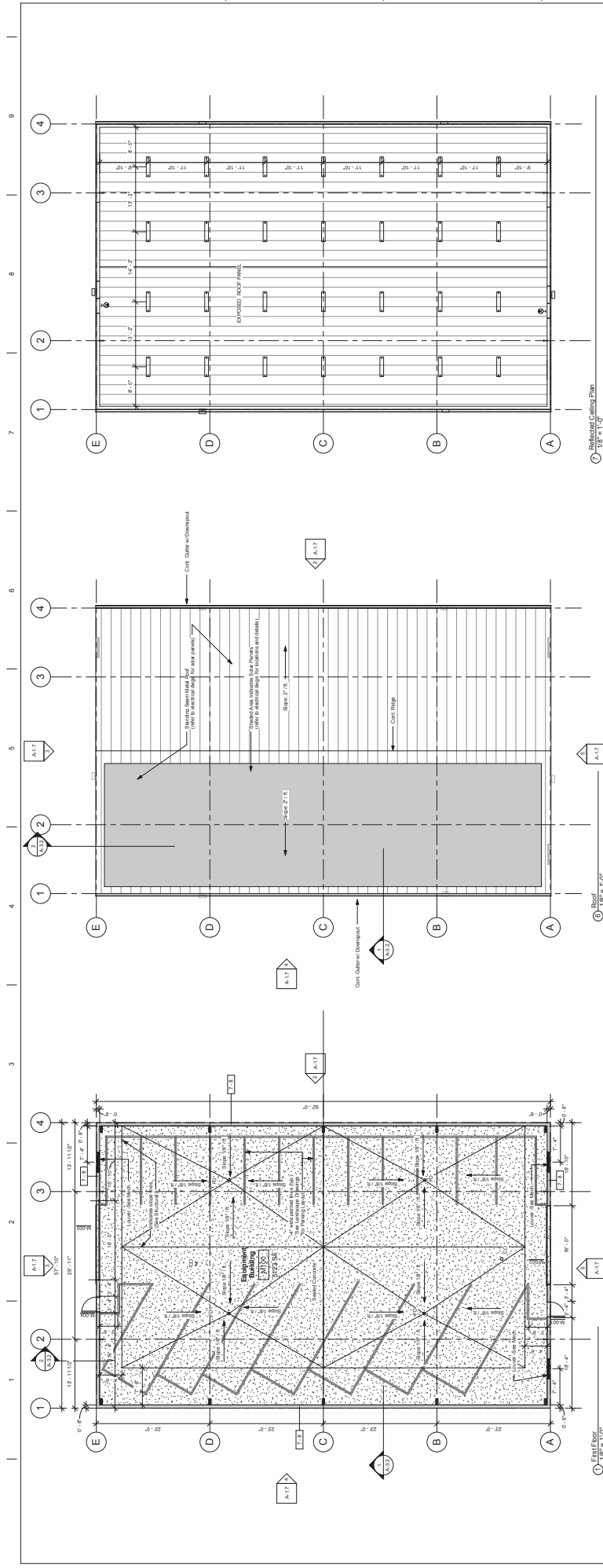
www.mt-r.com

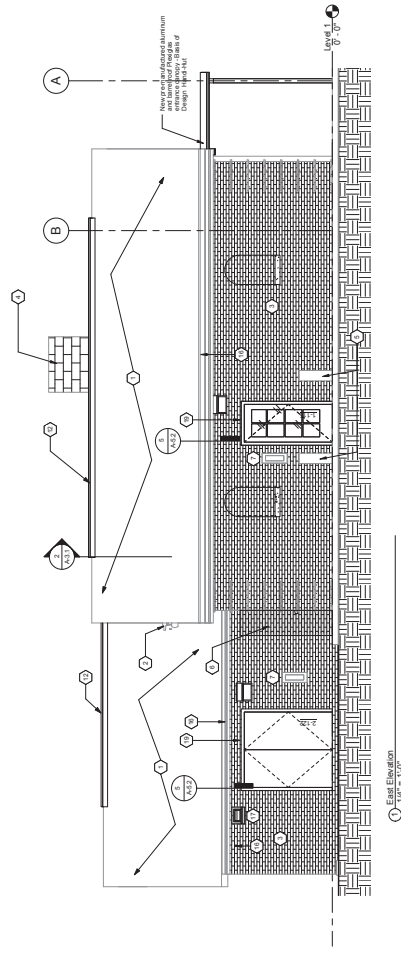
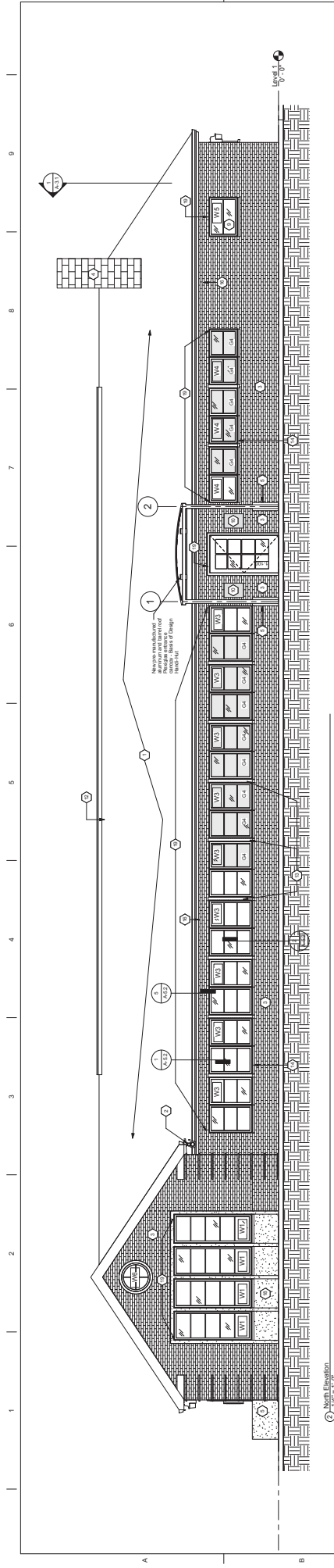


| Slade Number | Road Plan Keynotes | Description |
|--------------|--------------------|---|
| 1 | | Remove existing side slope as required to cut and install new linear attic roof vent. Bases of design to be Co-A-Vent V090 (20 sq. in. of free venting per foot). Total net free linear vent to be 68 feet. |
| 2 | | Remove existing attic air as required to cut and install new linear attic roof vent. Bases of design to be Co-A-Vent V090 (20 sq. in. of free venting per foot). Total net free linear vent to be 68 feet. |
| 3 | | Remove existing attic air as required to cut and install new linear attic roof vent. Bases of design to be Co-A-Vent V090 (20 sq. in. of free venting per foot). Total net free linear vent to be 68 feet. |
| 4 | | Remove existing attic air as required to cut and install new linear attic roof vent. Bases of design to be Co-A-Vent V090 (20 sq. in. of free venting per foot). Total net free linear vent to be 68 feet. |
| 5 | | Contractor to remove existing decorative fascia trim, fascia, and eave board (fascia Board to remain). Prior to demolition, the contractor shall refer to the hazardous report and asbestos survey to determine if removal is required. |
| 6 | | Contractor to remove existing decorative fascia trim, fascia, and eave board (fascia Board to remain). Prior to demolition, the contractor shall refer to the hazardous report and asbestos survey to determine if removal is required. |
| 7 | | Contractor to install metal siding over the wall areas throughout the roof project area. Refer to report for quantity. |
| 8 | | Contractor to install new continuous decorative soffit and soffit vent per detail S/A-2. |
| 9 | | Remove existing GUTTER and salvage for reinstallation after rebuilding the save construction per detail S/A-2. |

BID DOCUMENTS

[illegible]

[illegible]



| No. Number | Description |
|---------------|---|
| 1 | Existing stable roof to remain. Contractor to repair all loose material and to include 500' of offsite exposed surface area of contractor shall submit a Unit Price bid to repair. To date has beyond the 500 square ft of exposed site surface. |
| 2 | Existing concrete wall to remain. Refer to Electrical Plans |
| 3 | Existing Concrete to Remain. Refer to Electrical Plans |
| 4 | Existing driveway to remain. Refer to Mechanical at end of project |
| 5 | Existing driveway to remain (Power walk in at end of project) |
| 6 | Remove existing door; lowered frame at end of project |
| 7 | Remove Existing door; lowered framing, and related framing and mill opening with new black and black. Back and mortar to original finish |
| 8 | Existing surface paving F&S to remain |
| 9 | Remove existing 3'x2' curb chute door and frame and install with new brick and block drift to be flush with surrounding base. See details |
| 10 | Remove existing power and prep and install new window |
| 11 | Existing Rafters to remain |
| 12 | Remove existing lower vent and metal screen and replace in kind with new aluminum lower vent with integral insect screen |
| 13 | Remove existing attic floor as required to cut and install new linear attic roof vent. Basis of design to be Cora Vent V600 |
| 14 | Install black steel aluminum (to match exterior window finish) around existing window opening minimum 1' x 6' high |
| 15 | Coordinate to drain existing materials through existing roof valley and to deckpan nearest gutter. See detail |
| 16 | Contractor to remove salvaged gable rafter, existing decorative fascia trim, fascia and softboard (Fascia Board to remain). Contractor to take all necessary precautions to minimize the risk on the issue of same contribution prior to removal. Must coordinate with existing owner to ensure proper disposal of debris. Contractor to provide adequate protection during storm remediation and leave remainder. Typical all areas in limits of contract. Refer to detail FA-2 for new construction |
| 17 | Aluminum lower vent to mechanical drawings |
| 18 | Remove existing main wind disposed panel to be removed down to bare metal. Refer to addendum I for contractor responsibilities for hazardous materials removal. Prime and paint final coat. Refer to spec section 00 00 and 09 01 (Typical exterior finishes) |



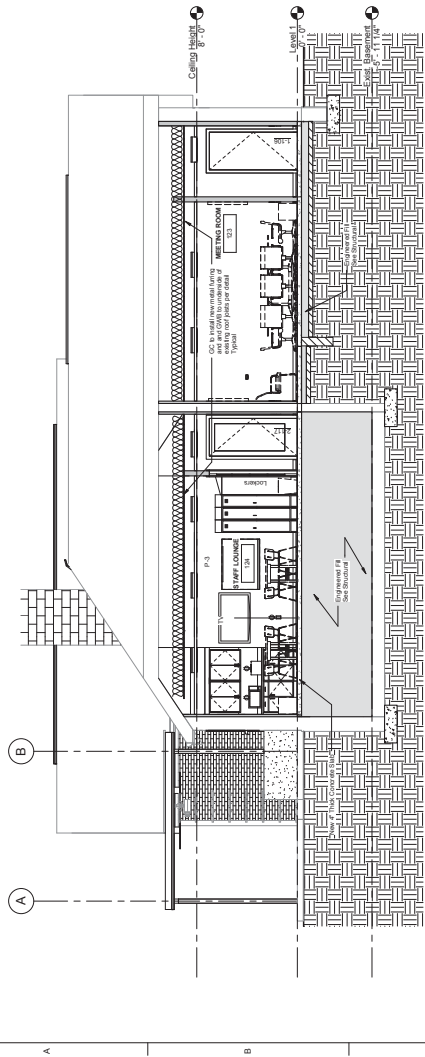
BID DOCUMENTS

[illegible]

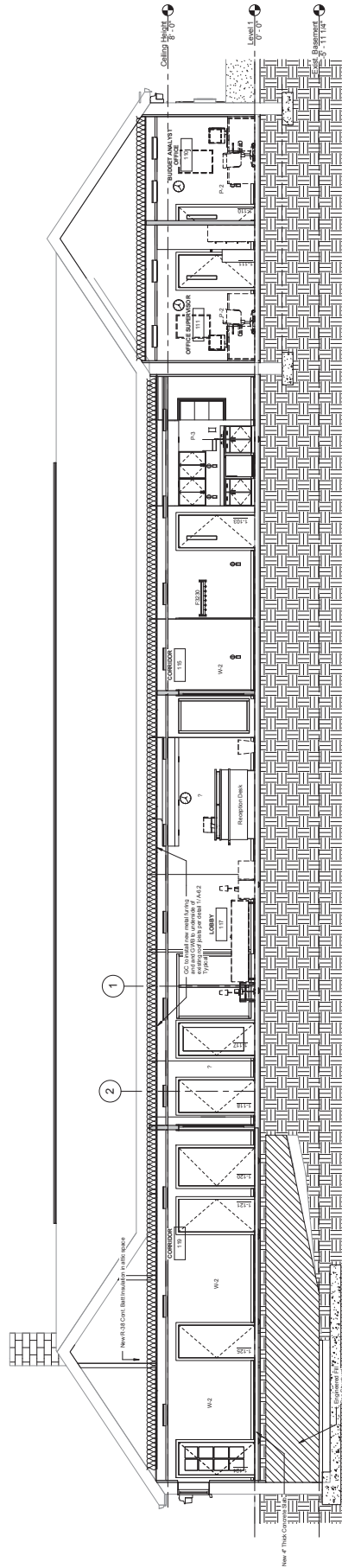


② West Elevation
1/4" = 1'-0"

WA FORM 08-6231

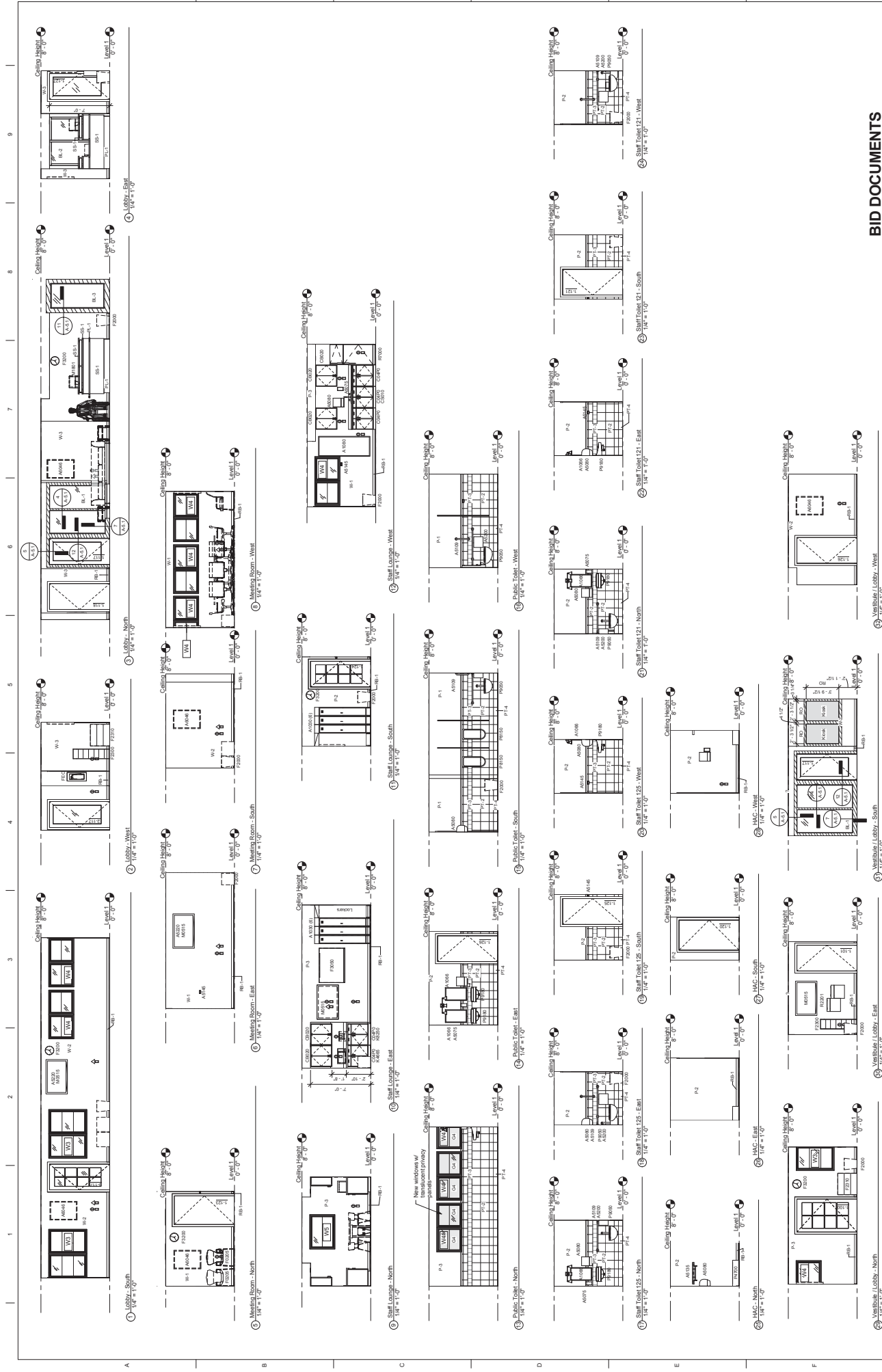


① West Section
1/4" = 1'-0"



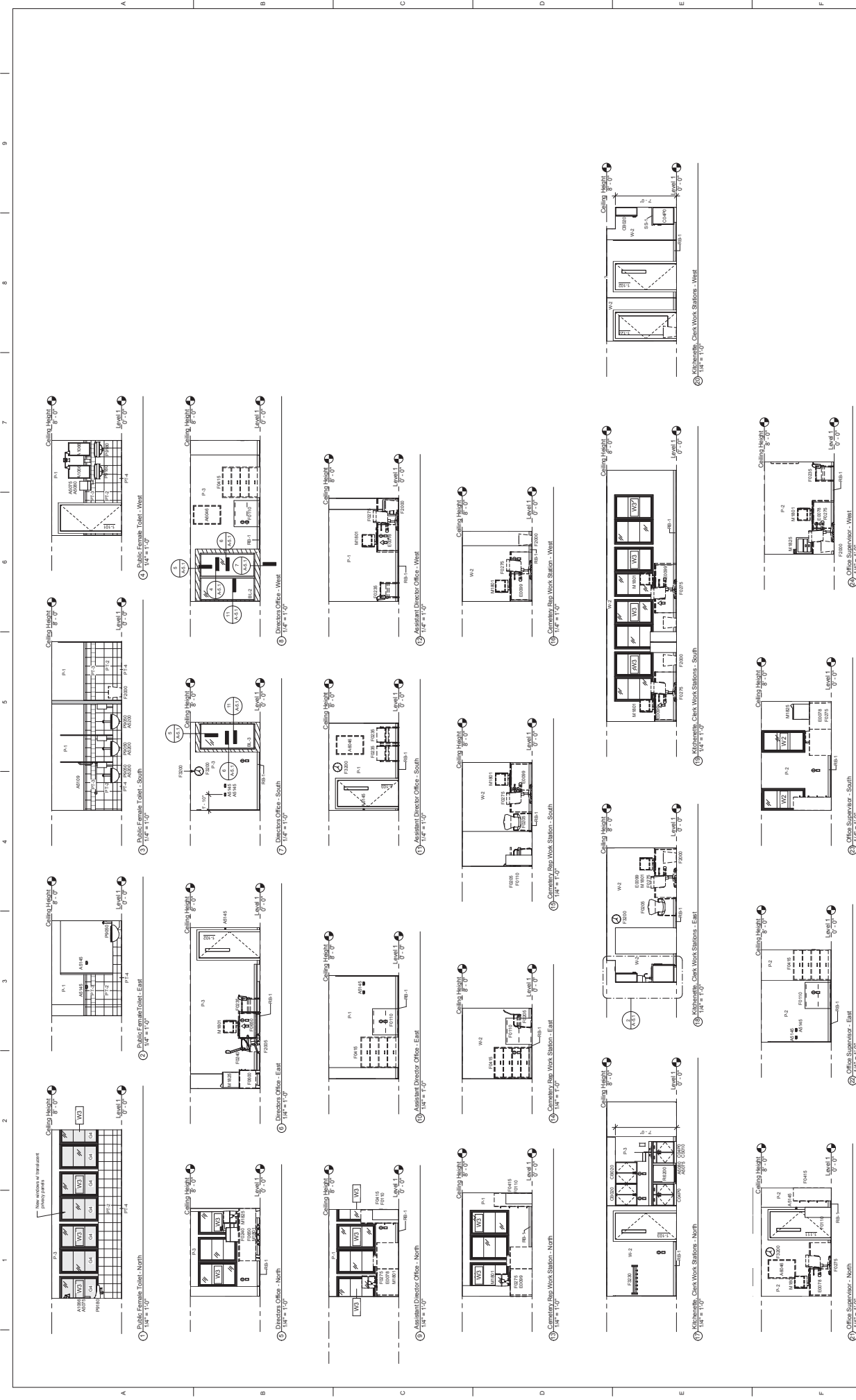
② South Section
1/4" = 1'-0"

| | | | | | | | | | | | | | | | | | | | | | |
|----------------|--|---|--|--|--|--|--|--|--|----------------------|--|---|--|--|--|---|--|--|--|--|--|
| CONSULT TANTS: | |  Hirani Group 10000 Wilshire Blvd., Suite 1000 Beverly Hills, CA 90210 Tel: 310.277.1111 Fax: 310.277.1112 Email: info@hiranigroup.com | |  willow 4000 Wilshire Blvd., Suite 1000 Beverly Hills, CA 90210 Tel: 310.277.1111 Fax: 310.277.1112 Email: info@willowgroup.com | |  | |  M-T-R LANDSCAPE ARCHITECTS 100 Redwood Blvd., Suite 100 Redwood City, CA 94063 Tel: 650.341.4400 Fax: 650.341.4401 Email: info@mt-r.com | | ARCHITECT/ENGINEERS: | | Strategic 1966 Administration Building - Building Sections Approved Project Director | | Project File Administration / Public Restroom Renovations and New Equipment Storage Building | | Project Number 1912411 3038 Building Number 1 Drawing Number A-3.1 | | Location 2040 Welwood Ave. Farmingdale, NY 11735 Date AUGUST 6, 2014 Checked Drawn Dwg. 32 of 76 | | NATIONAL CEMETERY ADMINISTRATION OFFICE OF DESIGN AND CONSTRUCTION  Department of Veterans Affairs | |
|----------------|--|---|--|--|--|--|--|--|--|----------------------|--|---|--|--|--|---|--|--|--|--|--|



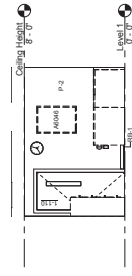
BID DOCUMENTS

| | | | | | | | | | |
|--|---|---|---|---------------------|---|---|--|---|--|
|  Hirant Group |  KCI <small>Korea Construction Industry</small> |  willow <small>CONSTRUCTION</small> |  | CONSULTANTS: | ARCHITECT/ENGINEERS:  M-T-R LANDSCAPE ARCHITECTS <small>111 Delaware Road Philadelphia, PA 19106 (610) 351-6400</small> | <div> <div> Project Title Administration / Public Restroom Renovations and New Equipment Storage Building </div> <div> Project Number 815CM 3038 </div> <div> Building Number 1 </div> <div> Drawing Number A-4.1 </div> <div> Location 2040 Welwood Ave. Farmingdale, NY 11735 </div> <div> Owner August 1, 2014 </div> <div> Drawn Down </div> <div> Checked Down </div> <div> Date August 1, 2014 </div> <div> Rev 0 </div> </div> <div> Approved: Project Director </div> | Administration Building - Interior Elevations | Contract Title Administration Building - Interior Elevations | NATIONAL CEMETERY ADMINISTRATION OFFICE OF DESIGN AND CONSTRUCTION  Department of Veterans Affairs |
|--|---|---|---|---------------------|---|---|--|---|--|



BID DOCUMENTS

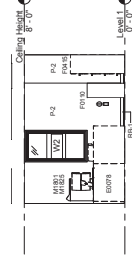
[illegible]



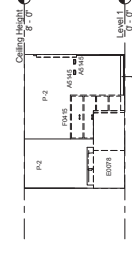
① Budget Analyst Office - North
1/4" = 1'-0"



② Budget Analyst Office - East
1/4" = 1'-0"



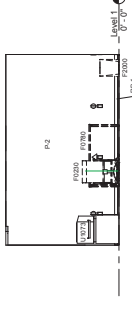
③ Budget Analyst Office - South
1/4" = 1'-0"



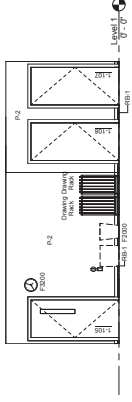
④ Budget Analyst Office - West
1/4" = 1'-0"



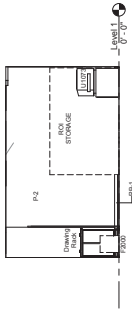
⑤ Operational Center - North
1/4" = 1'-0"



⑥ Operational Center - East
1/4" = 1'-0"



⑦ Operational Center - South
1/4" = 1'-0"



⑧ Operational Center - West
1/4" = 1'-0"

| | | | | | | | | |
|---|---|---|---|---|---|---|---|---|
| 1 | 2 | 3 | 4 | 5 | 6 | 7 | 8 | 9 |
|---|---|---|---|---|---|---|---|---|

CONSULTANTS:



ARCHITECT/ENGINEERS:



Administration / Public Restroom
Renovations and
New Equipment Storage Building

Agent: Project Director

BID DOCUMENTS

NATIONAL
CEMETERY
ADMINISTRATION
OFFICE OF DESIGN
AND CONSTRUCTION
Department of
Veterans Affairs

Project No. 1504 303
Building No. 1
Drawing Number
A-4.3
Date AUGUST 6, 2014
Sheet 01

