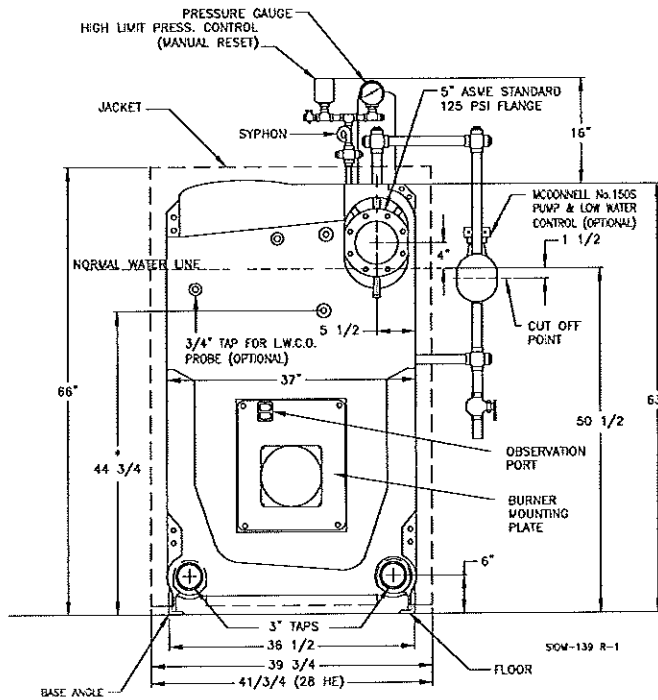
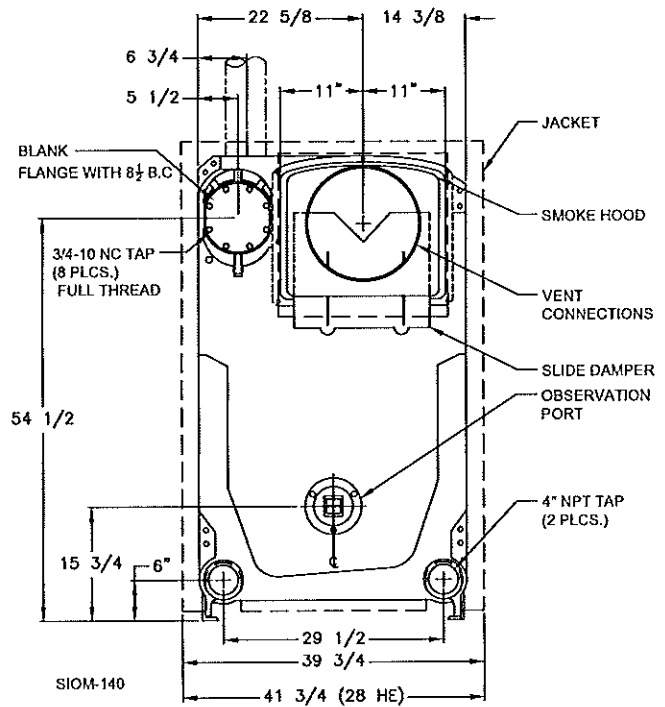


28A Series

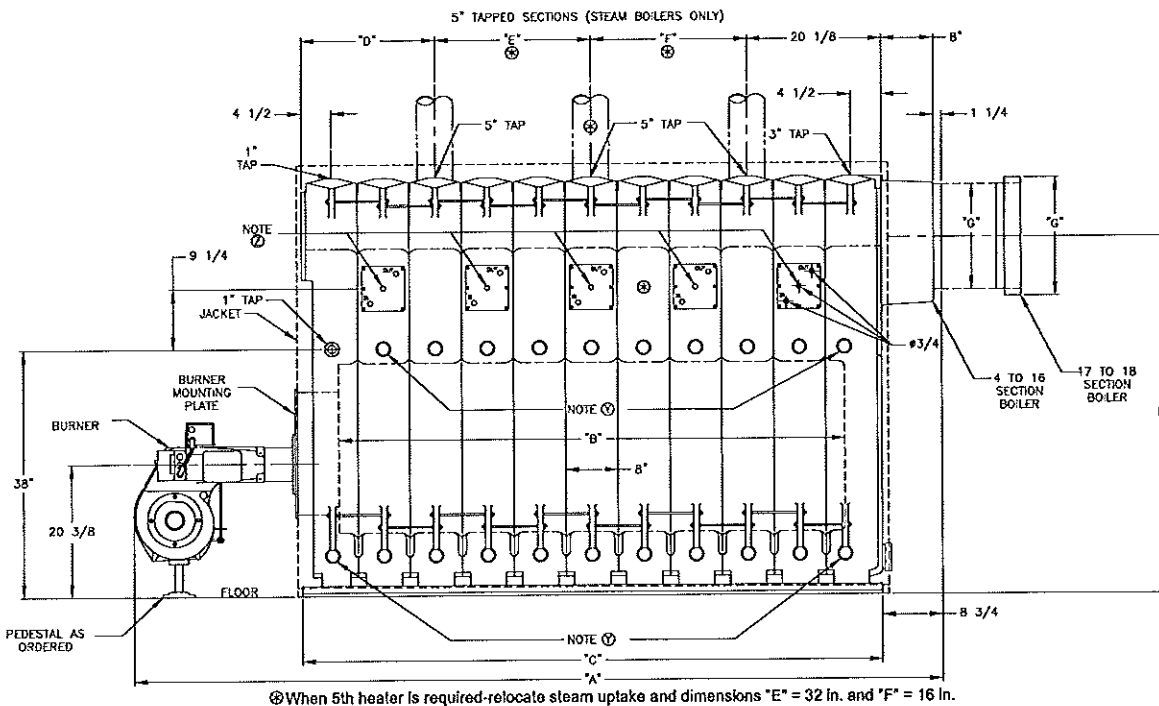


* LOWEST PERMISSIBLE WATER LINE

FRONT VIEW (Steam Boiler)



REAR VIEW



SIDE VIEW

(Note Y) 1-1/2" inspection tappings when ordered.

(Note Z) Tankless heater sections when ordered. Allow 36" clear space for heater withdrawal.

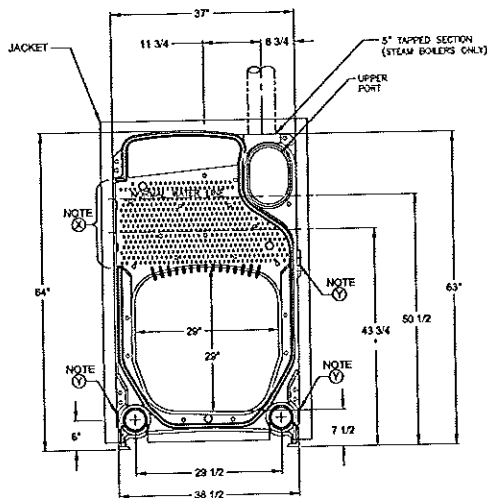
Dimensions (inches)

Boiler Number (Note 1)	Overall Length — "A"				Opt. Packaged Base Dimensions				Furnace Length "B"	Boiler Length "C"	Steam Uptake Locations (Note 9)			Draft Loss Ins. W.C.	Firebox Press Ins. W.C.††	Dia. Vent Conn. "G"	(Note 7) Height Vent Conn. "H"
	(Note 8)				Carlin & Beckett		Power Flame and Webster				"D"	"E"	"F"				
	Carlin	Beckett	Power Flame	Webster	"J"	"K"	"J"	"K"									
†28A-S-4	62%	64	71%	66%	54%	83%	54%	91%	23%	33	12%	—	—	.24	.34	10	57%
†28A-S-5	70%	72	83%	74%	62%	91%	62%	104%	31%	41	20%	—	—	.25	.35	10	57%
†28A-S-6	80%	80%	91%	82%	70%	99%	70%	112%	39%	49	12%	16	—	.26	.36	10	57%
†28A-S-7	88%	88%	99%	90%	78%	107%	78%	120%	47%	57	12%	24	—	.27	.37	12	56%
†28A-S-8	96%	96%	107%	98%	86%	115%	86%	128%	55%	65	12%	32	—	.28	.38	12	56%
†28A-S-9	108%	104%	115%	110%	96%	123%	94%	136%	63%	73	12%	40	—	.29	.39	14	55%
†28A-S-10	116%	116%	128	118%	102%	135%	102%	144%	71%	81	20%	40	—	.30	.40	14	55%
†28A-S-11	125%	124%	137%	126%	110%	143%	110%	157%	79%	89	20%	24	24	.31	.41	14	55%
†28A-S-12	133%	132%	145%	134%	118%	151%	118%	165%	87%	97	20%	24	32	.33	.43	14	55%
†28A-S-13	141%	—	153%	142%	126%	159%	126%	173%	95%	105	20%	32	32	.34	.44	14	55%
†28A-S-14	149%	—	161%	150%	134%	167%	134%	181%	103%	113	20%	32	40	.35	.45	16	54%
†28A-S-15	—	—	169%	158%	—	—	142%	189%	111%	121	20%	40	40	.36	.46	16	54%
†28A-S-16	—	—	177%	166%	—	—	150%	198	119%	129	20%	48	40	.37	.47	16	54%
†28A-S-17	—	—	191%	183%	—	—	159	206	127%	137	20%	48	48	.38	.48	18	54%
†28A-S-18	—	—	199%	191%	—	—	167%	214%	135%	145	20%	56	48	.39	.49	18	54%

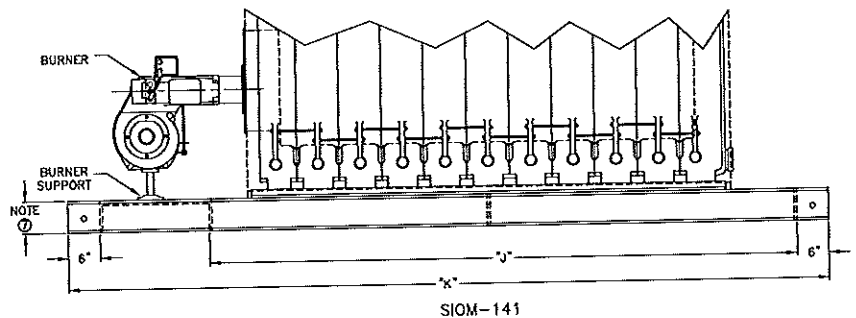
(Note 7) When unit is assembled or packaged, add 6" to heights for 4-14 sect., 8" to heights for 15-18 sect.
 (Note 8) Add 2-3/4" to sect. 17 and 18 for smoke hood adaptor.

(††) Based on 0.10 ins. W.C. pressure at boiler outlet. If vent sizing results in a back pressure greater than 0.10 ins. W.C., consult Smith.

(Note 9) These measurements are approximate. The Smith representative should be consulted before selecting boilers for installation having unusual piping and pick-up requirements, such as intermittent system operation, extensive piping systems, etc. The boiler ratings have been determined under previous governing forced draft units.



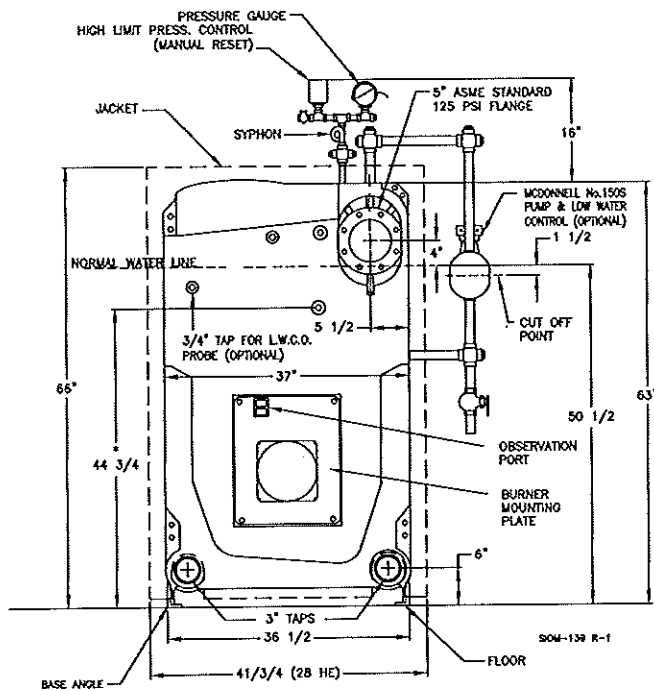
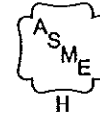
INTERMEDIATE VIEW



TYPICAL ASSEMBLY – SIDE VIEW

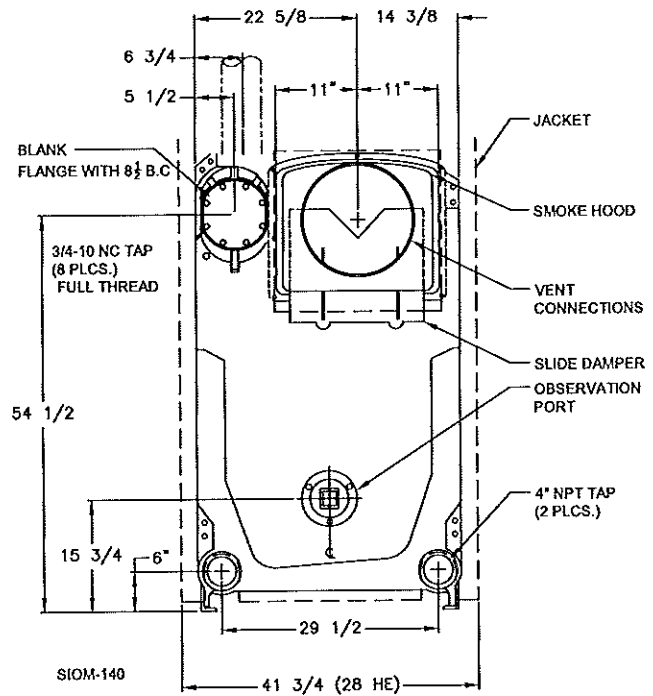
(Note X) Flue cleanout opening. Allow 36" clear work space for using flue brush.

28HE Series

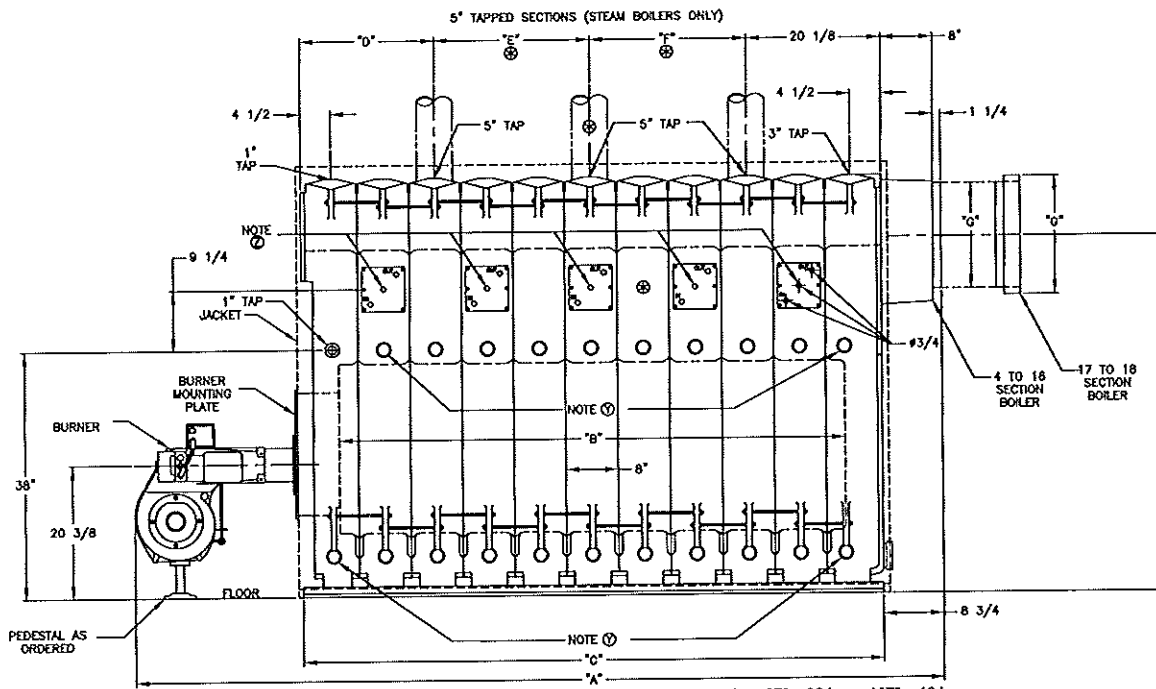


* LOWEST PERMISSIBLE WATER LINE

FRONT VIEW (Steam Boiler)



REAR VIEW



Ⓜ When 5th heater is required-relocate steam uptake and dimensions "E" = 32 in. and "F" = 16 in.

SIDE VIEW

(Note Y) 1-1/2" inspection tappings when ordered.

(Note Z) Tankless heater sections when ordered. Allow 36" clear space for heater withdrawal.

Dimensions (Inches)

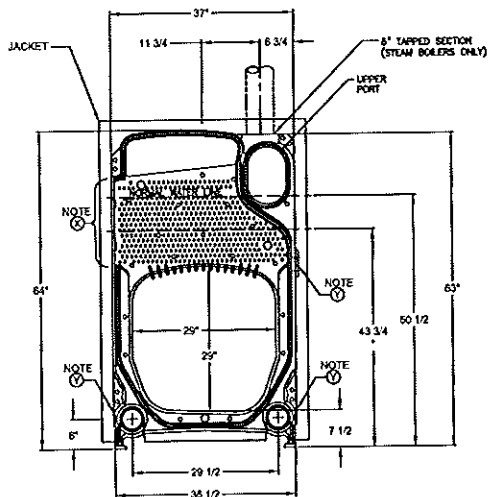
Boiler Number (Note 1)	Overall Length — "A"			Opt. Packaged Base Dimensions				Furnace Length "B"	Boiler Length "C"	Steam Uptake Locations (Note 9)			Draft Loss Ins. W.C.	Firebox Press. Ins. W.C.††	Dia. Vent Conn. "G"	(Note 7) Height Vent Conn. "H"
	(Note 8)			Carlin & Beckett		Power Flame										
	Carlin	Beckett	Power Flame	"J"	"K"	"J"	"K"									
†28HE-Ø4	62%	64	71%	54%	83%	54%	91%	23%	33	12%	—	—	.40	.50	10	57%
†28HE-Ø5	70%	72	83%	62%	91%	62%	104%	31%	41	20%	—	—	.42	.52	10	57%
†28HE-Ø6	80%	80%	91%	70%	99%	70%	112%	39%	49	12%	16	—	.44	.54	10	57%
†28HE-Ø7	88%	88%	99%	78%	107%	78%	120%	47%	57	12%	24	—	.46	.56	12	56%
†28HE-Ø8	96%	96%	107%	86%	115%	86%	128%	55%	65	12%	32	—	.48	.58	12	56%
†28HE-Ø9	108%	104%	115%	96%	123%	94%	136%	63%	73	12%	40	—	.52	.62	14	55%
†28HE-Ø10	116%	116%	128	102%	135%	102%	144%	71%	81	20%	40	—	.53	.63	14	55%
†28HE-Ø11	125%	124%	137%	110%	143%	110%	157%	79%	89	20%	24	24	.55	.65	14	55%
†28HE-Ø12	133%	132%	145%	118%	151%	118%	165%	87%	97	20%	24	32	.57	.67	14	55%
†28HE-Ø13	141%	140%	153%	126%	159%	126%	173%	95%	105	20%	32	32	.59	.69	14	55%
†28HE-Ø14	—	—	161%	—	—	134%	181%	103%	113	20%	32	40	.61	.71	16	54%
†28HE-Ø15	—	—	169%	—	—	142%	189%	111%	121	20%	40	40	.63	.73	16	54%
†28HE-Ø16	—	—	177%	—	—	150%	198	119%	129	20%	48	40	.66	.76	16	54%
†28HE-Ø17	—	—	191%	—	—	159	206	127%	137	20%	48	48	.69	.79	18	54%
†28HE-Ø18	—	—	199%	—	—	167%	214%	135%	145	20%	56	48	.70	.80	18	54%

(Note 7) When unit is assembled or packaged, add 6" to heights for 4-14 sect., 8" to heights for 15-18 sect.

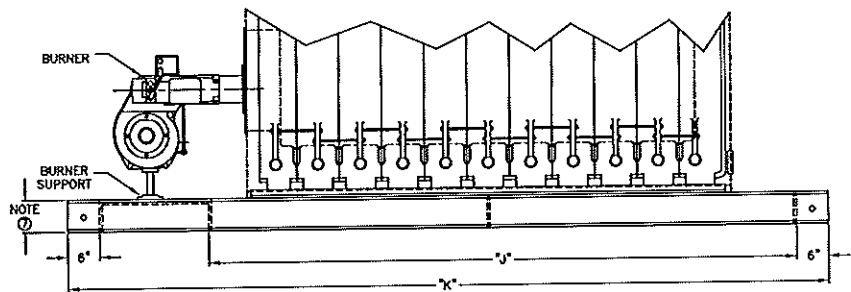
(Note 8) Add 2-3/4" to sect. 17 & 18 for smoke hood adaptor.

(ff) Based on 0.10 ins. W.C. pressure at boiler outlet. If vent sizing results in a back pressure greater than 0.10 ins. W.C., consult Smith

(Note 9) These measurements are approximate. The Smith representative should be consulted before selecting boilers for installation having unusual piping and pick-up requirements, such as intermittent system operation, extensive piping systems, etc. The boiler ratings have been determined under previous governing forced draft units.



INTERMEDIATE VIEW



ASSEMBLY – SIDE VIEW

(Note X) Flue cleanout opening. Allow 36" clear work space for using flue brush, and for the removal of the heat transfer rods.

(Note Y) 1-1/2" inspection tappings when ordered.