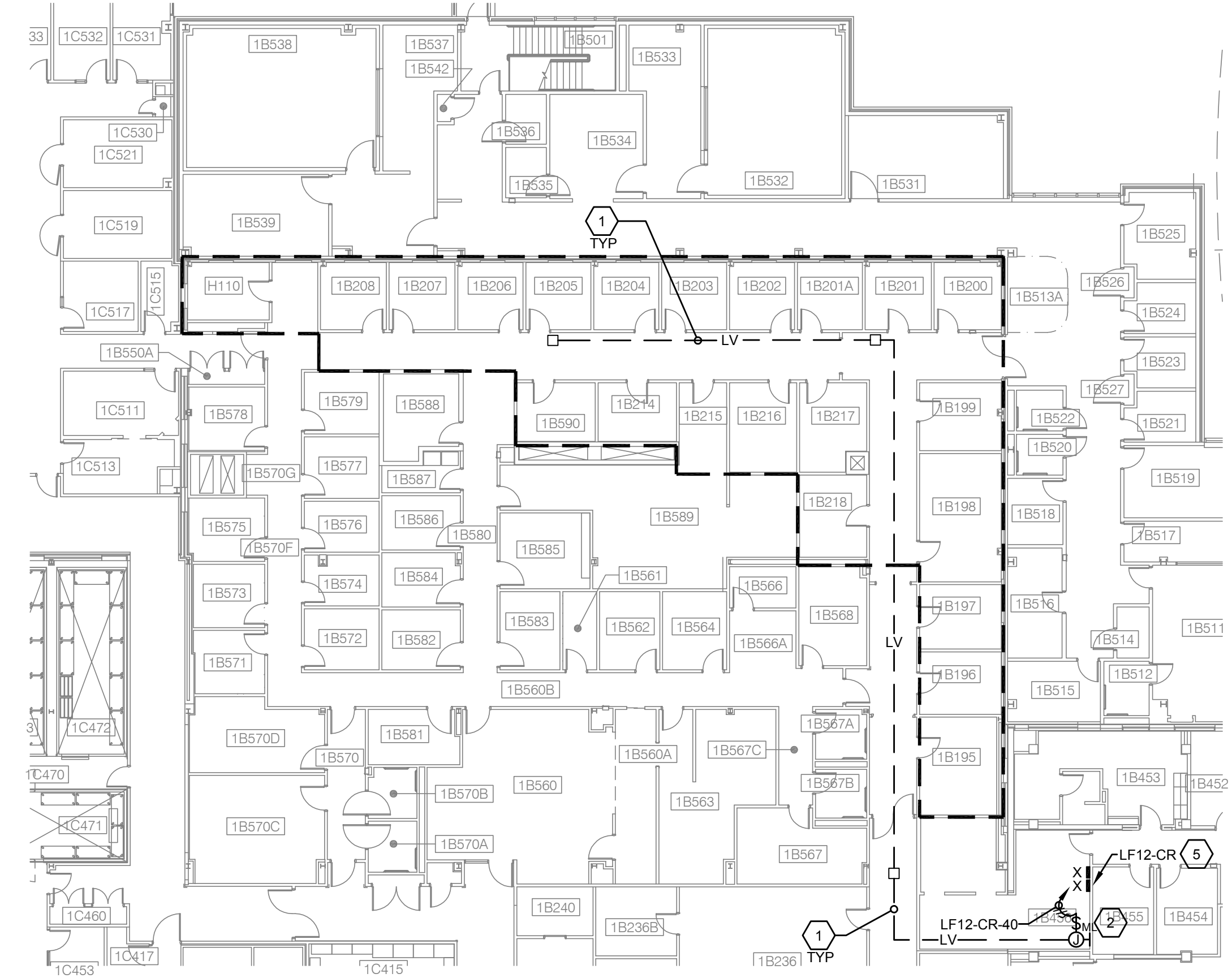


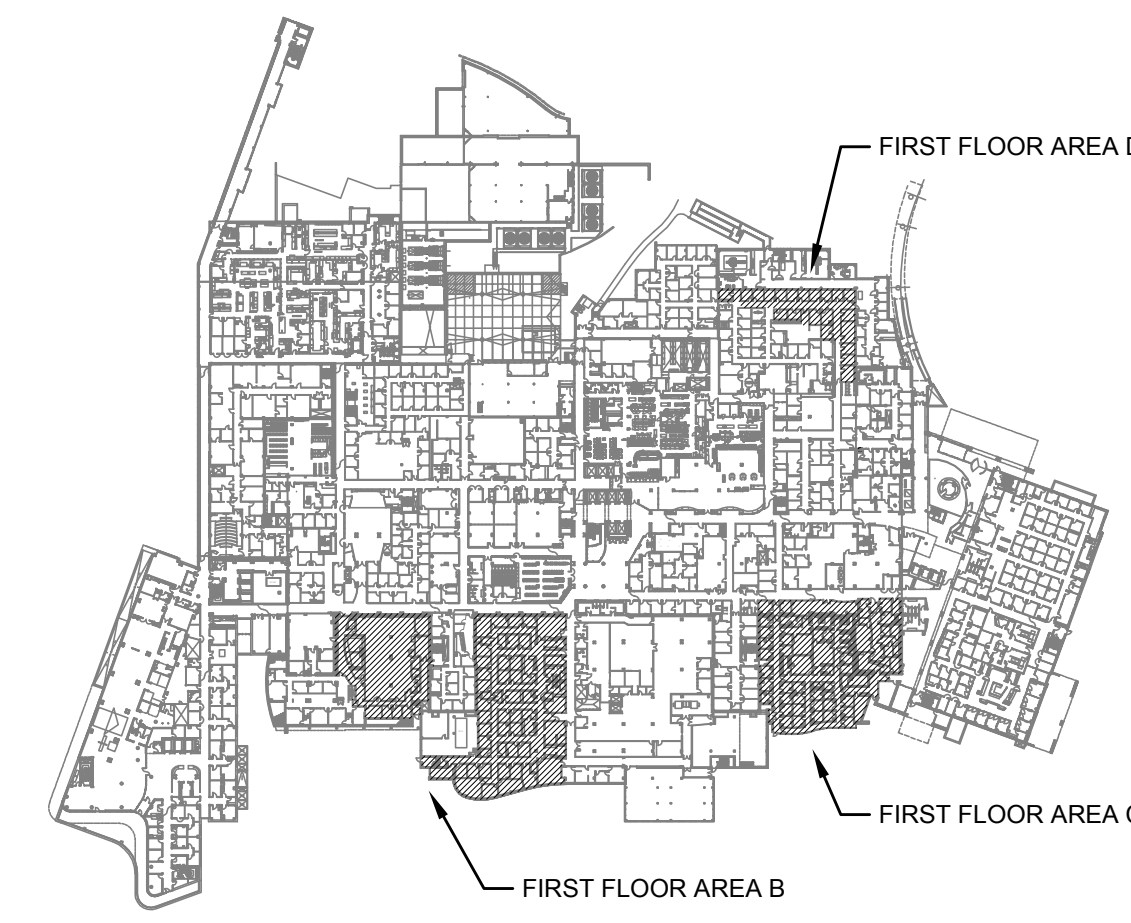
PARTIAL FIRST FLOOR ELECTRICAL PLAN - AREA C
SCALE: 1/16" = 1'-0"
0' 8' 16' 32' 64'



PARTIAL FIRST FLOOR ELECTRICAL PLAN - AREA D
SCALE: 1/16" = 1'-0"
0' 8' 16' 32' 64'

- CODED NOTES:**
1. PROVIDE 2 #16AWG UNSHIELDED PLENUM CABLE (CL2P RATING OR BETTER) FROM TRANSFORMER SECONDARY TO WIRELESS REPEATERS. ROUTE CABLING ABOVE FINISHED CEILING WITH NEW BRIDLE RING OR J-HOOK SUPPORTS ON 4" CENTERS. ALL PENETRATIONS THROUGH EXISTING WALLS, SHALL BE INSTALLED IN 3/4" CONDUIT SLEEVES TO MAINTAIN FIRE/SMOKE RATING.
 2. PROVIDE 500VA - 120V-24VAC TRANSFORMER(S), MOUNTED IN LOCKABLE ENCLOSURE IN ELECTRICAL ROOM TO POWER WIRELESS ACCESS POINTS (WIRELESS REPEATERS). FIELD VERIFY EXACT MOUNTING LOCATION WITH COR PRIOR TO ROUGH-IN. PROVIDE TYPED ADHESIVE LABEL READING "WIRELESS TEMPERATURE CONTROL POWER SUPPLY".
 3. PROVIDE CONTROLLER WITH WIRELESS USB HUB. CONTRACTOR SHALL MOUNT DIRECTLY TO WALL OR PROVIDE WALL SHELF. FIELD VERIFY AVAILABLE LOCATION WITHIN ROOM. CONTRACTOR SHALL PROVIDE 120V-1P EMERGENCY CIRCUIT AND SURFACE MOUNTED DUPLEX RECEPTACLE MOUNTED ADJACENT TO CONTROLLER.
 4. LOCATION OF EXISTING ANDOVER NETWORK SWITCH INDICATED FOR REFERENCE.
 5. PROVIDE UPDATED PANEL LOAD SCHEDULES.
 6. PROVIDE 2-PORT SURFACE MOUNTED DATA OUTLET MOUNTED ADJACENT TO CONTROLLER. PROVIDE (2) CAT6 CABLES (1 SPARE) FROM EXISTING ANDOVER NETWORK SWITCH INDICATED ON DRAWINGS AND CONNECT COMPLETE. COORDINATE WORK WITH COR.




- GENERAL NOTES:**
- A. ACCESS TO ROOMS SHALL BE SCHEDULED WITH VA COR AND DEPARTMENT STAFF. SUBMIT PROPOSED SCHEDULE TO VA FOR REVIEW WITHIN 10 BUSINESS DAYS OF NOTICE TO PROCEED. AREAS CONSIDERED CRITICAL OR LIMITED AVAILABILITY SHALL BE COORDINATED WITH THE VA DURING THE DEVELOPMENT OF THE SCHEDULE.
 - B. FINAL QUANTITIES AND LOCATIONS OF WIRELESS REPEATERS SHALL BE DETERMINED BY THE CONTRACTOR AND VENDOR IN ORDER TO GUARANTEE A FULLY FUNCTIONAL SYSTEM.



FIRST FLOOR KEY PLAN
NOT TO SCALE

FOR CONSTRUCTION

FULLY SPRINKLERED

Bid Issue	03-30-15	CONSULTANTS:		ARCHITECT/ENGINEER:  FREDRICK, FREDRICK & HELLER ENGINEERS, INC. 672 EAST ROYALTON ROAD BROADVIEW HTS., OHIO 44147 TEL: (440) 546-9888 FAX: (440) 546-9899	Drawing Title PARTIAL FIRST FLOOR ELECTRICAL PLANS - AREAS C & D	Project Title CONVERT PNEUMATIC VAV BOXES TO DDC CONTROL	Project Number 541-15-202	Office of Facilities Management 		
					Location VAMC - WADE PARK	Building Number 1				
					Date 03-30-15	Checked LDH	Drawn TWM		Drawing Number 1-E3B	Dwg. of
Revisions:	Date									