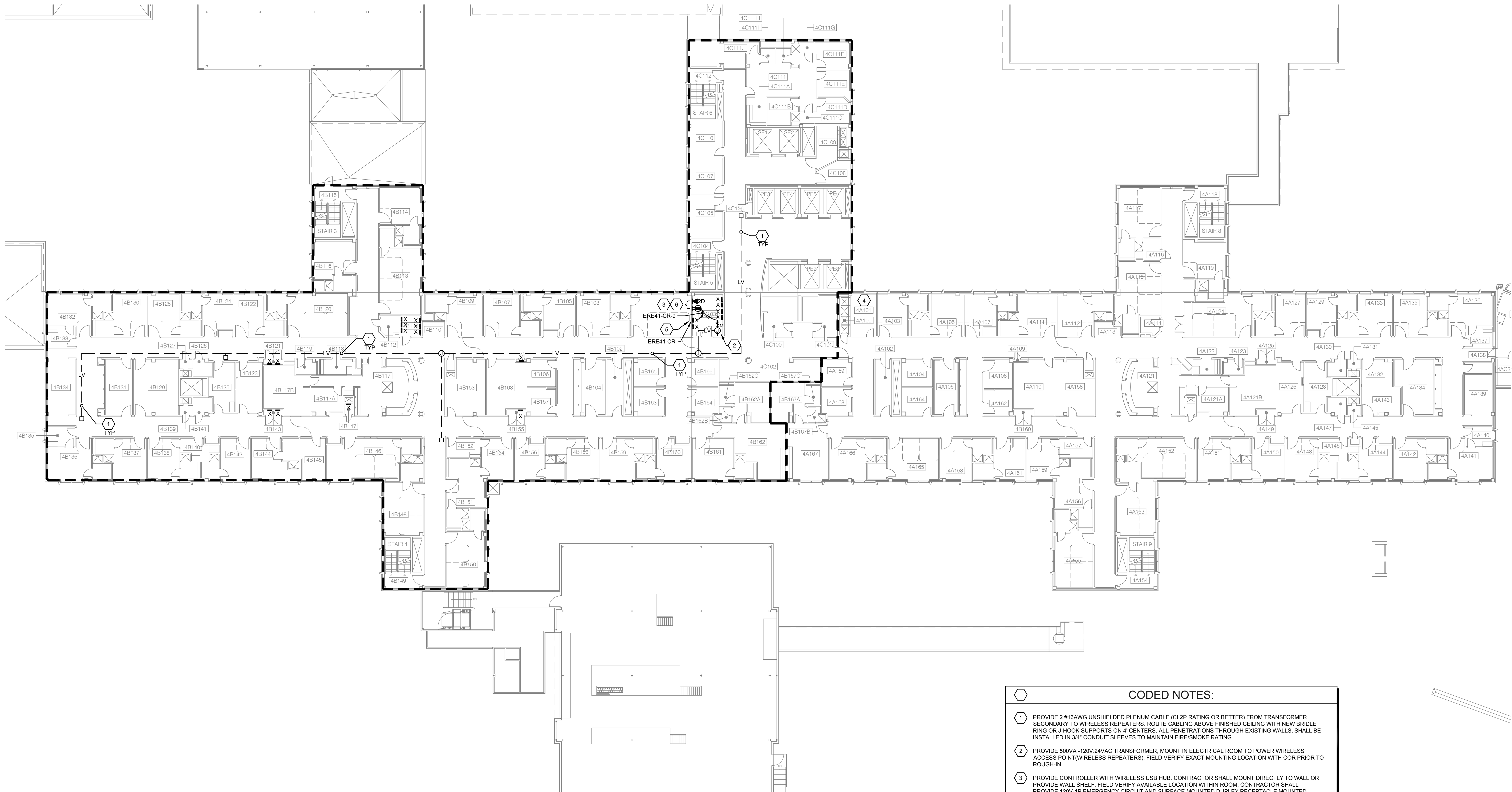


three inches = one foot
one and one half inches = one foot
one inch = one foot
three quarters inch = one foot
one half inch = one foot
three eighths inch = one foot
one quarter inch = one foot
one eighth inch = one foot

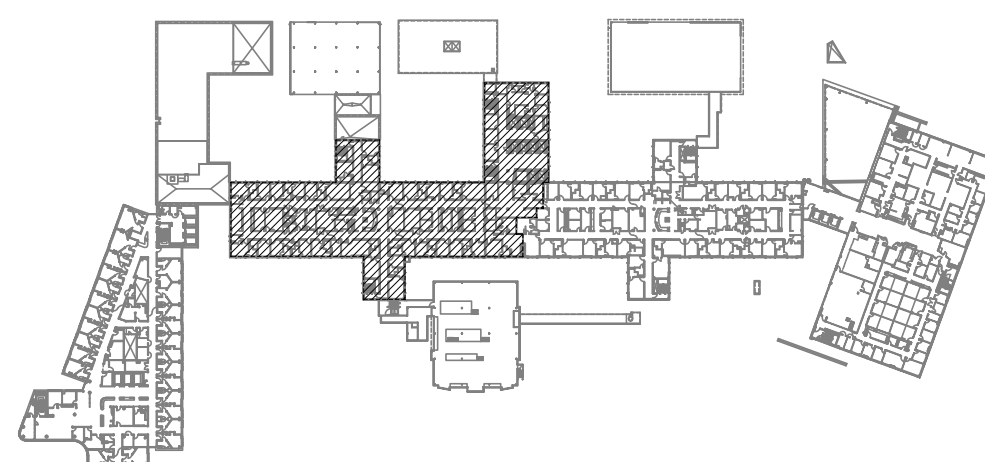


DEDUCT ALTERNATE 1 - FOURTH FLOOR ELECTRICAL PLAN
SCALE: 1/16" = 1'-0"
0' 8' 16' 32' 64'

- CODED NOTES:**
- PROVIDE 2 #16AWG UNSHIELDED PLENUM CABLE (CL2P RATING OR BETTER) FROM TRANSFORMER SECONDARY TO WIRELESS REPEATERS. ROUTE CABLING ABOVE FINISHED CEILING WITH NEW BRIDLE RING OR J-HOOK SUPPORTS ON 4" CENTERS. ALL PENETRATIONS THROUGH EXISTING WALLS, SHALL BE INSTALLED IN 3/4" CONDUIT SLEEVES TO MAINTAIN FIRE/SMOKE RATING.
 - PROVIDE 500VA - 120V/24VAC TRANSFORMER, MOUNT IN ELECTRICAL ROOM TO POWER WIRELESS ACCESS POINT(WIRELESS REPEATERS). FIELD VERIFY EXACT MOUNTING LOCATION WITH COR PRIOR TO ROUGH-IN.
 - PROVIDE CONTROLLER WITH WIRELESS USB HUB. CONTRACTOR SHALL MOUNT DIRECTLY TO WALL OR PROVIDE WALL SHELF. FIELD VERIFY AVAILABLE LOCATION WITHIN ROOM. CONTRACTOR SHALL PROVIDE 120V-1P EMERGENCY CIRCUIT AND SURFACE MOUNTED DUPLEX RECEPTACLE MOUNTED ADJACENT TO CONTROLLER.
 - ANDOVER NETWORK SWITCH INDICATED FOR REFERENCE.
 - PROVIDE UPDATED PANEL LOAD SCHEDULES.
 - PROVIDE 2-PORT SURFACE MOUNTED DATA OUTLET MOUNTED ADJACENT TO CONTROLLER. PROVIDE (2) CAT6 CABLES (1 SPARE) FROM EXISTING ANDOVER NETWORK SWITCH INDICATED ON DRAWINGS AND CONNECT COMPLETE. COORDINATE WORK WITH COR.

- GENERAL NOTES:**
- ACCESS TO ROOMS SHALL BE SCHEDULED WITH VA COR AND DEPARTMENT STAFF. SUBMIT PROPOSED SCHEDULE TO VA FOR REVIEW WITHIN 10 BUSINESS DAYS OF NOTICE TO PROCEED. AREAS CONSIDERED CRITICAL OR LIMITED AVAILABILITY SHALL BE COORDINATED WITH THE VA DURING THE DEVELOPMENT OF THE SCHEDULE.
 - FINAL QUANTITIES AND LOCATIONS OF WIRELESS REPEATERS SHALL BE DETERMINED BY THE CONTRACTOR AND VENDOR IN ORDER TO GUARANTEE A FULLY FUNCTIONAL SYSTEM.
 - CONTRACTOR TO DOCUMENT THE LOCATION OF ALL TRANSFORMERS ON AS-BUILT DRAWINGS.

- DEDUCT ALTERNATE 1 NOTES:**
- IF DEDUCT ALTERNATE 1 IS ACCEPTED, THIS DRAWING SHALL SUPERSEDE DRAWING 1-ME6.
 - DEDUCT ALTERNATE 1 WILL RESULT IN A TOTAL OF 65 WPT'S TO BE INSTALLED ON THE FOURTH FLOOR.



FOURTH FLOOR KEY PLAN
NOT TO SCALE

FULLY SPRINKLERED

FOR CONSTRUCTION

Bid Issue	03-30-15	CONSULTANTS:		ARCHITECT/ENGINEER: FREDRICK, FREDRICK & HELLER ENGINEERS, INC. 672 EAST ROYALTON ROAD BROADVIEW HTS., OHIO 44147 TEL: (440) 546-8888 FAX: (440) 546-8889	Drawing Title DEDUCT ALTERNATE 1-FOURTH FLOOR ELECTRICAL PLAN	Drawing Title CONVERT PNEUMATIC VAV BOXES TO DDC CONTROL	Project Number 541-15-202	Office of Facilities Management Department of Veterans Affairs	
					Approved: Project Director	Location VAMC - WADE PARK	Building Number 1		
					Date 03-30-15	Checked LDH	Drawn TWM		Drawing Number 1-E5-ALT1
Revisions:	Date							Dwg. of	