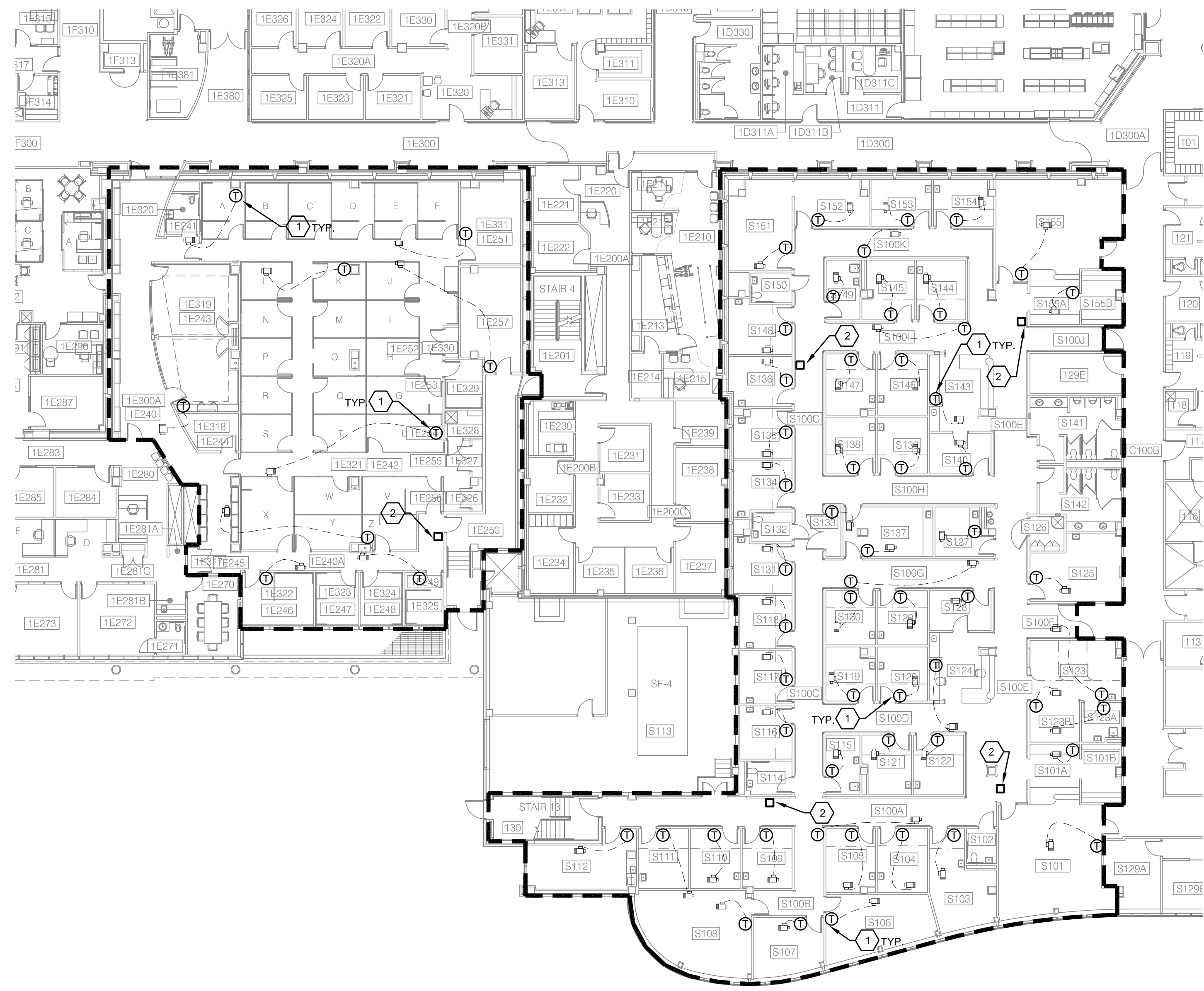


three inches = one foot  
one and one half inches = one foot  
one inch = one foot  
three quarters inch = one foot  
one half inch = one foot  
three eighths inch = one foot  
one quarter inch = one foot  
one eighth inch = one foot



PARTIAL FIRST FLOOR PLAN - AREA A  
SCALE: 1/16" = 1'-0"  
1

**CODED NOTES:**

1 REMOVE AND REPLACE EXISTING PNEUMATIC THERMOSTAT WITH NEW WIRELESS PNEUMATIC THERMOSTAT (WPT). FIELD VERIFY EXACT LOCATION. TYPICAL FOR ALL THERMOSTATS ILLUSTRATED ON THIS DRAWING.

2 PROVIDE NEW WIRELESS REPEATER AT APPROXIMATE LOCATION. REFER TO GENERAL NOTES (THIS DWG) AND SPECIFICATIONS FOR ADDITIONAL INFORMATION.

**GENERAL NOTES:**

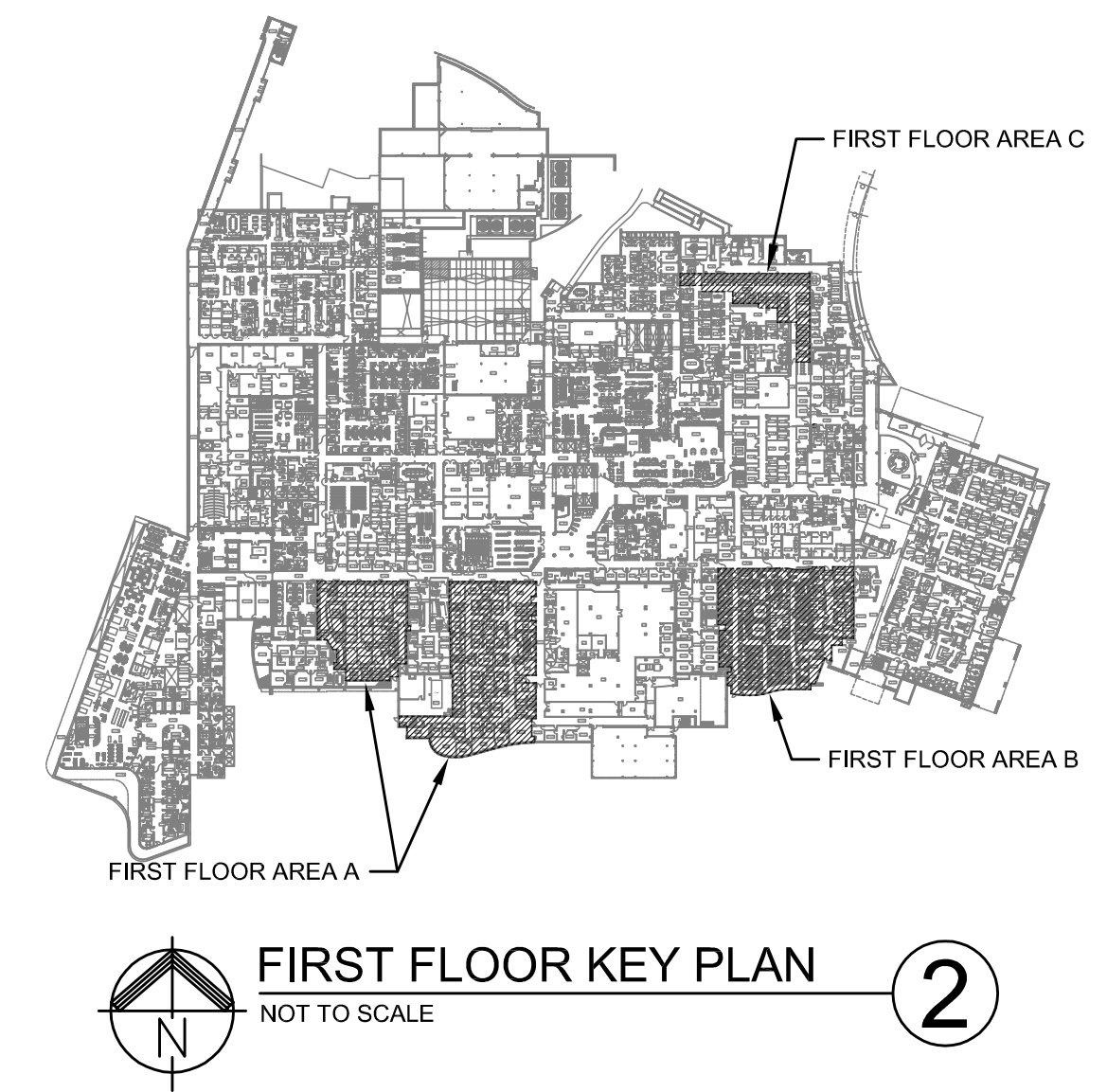
A. ALL EXISTING PNEUMATIC THERMOSTATS IN SCOPE OF WORK AREAS SHALL BE REPLACED WITH NEW WIRELESS PNEUMATIC THERMOSTATS (WPTs). LOCATIONS INDICATED ON PLANS ARE APPROXIMATE AND SHALL BE FIELD VERIFIED FOR EXACT LOCATION, MOUNTING HEIGHT, AND ACCESSIBILITY.

B. ACCESS TO ROOMS SHALL BE SCHEDULED WITH VA COR AND DEPARTMENT STAFF. SUBMIT PROPOSED SCHEDULE TO VA FOR REVIEW WITHIN 10 BUSINESS DAYS OF NOTICE TO PROCEED. AREAS CONSIDERED CRITICAL OR LIMITED AVAILABILITY SHALL BE COORDINATED WITH THE VA DURING THE DEVELOPMENT OF THE SCHEDULE.

C. FINAL QUANTITIES AND LOCATIONS OF WIRELESS REPEATERS SHALL BE DETERMINED BY THE CONTRACTOR AND VENDOR IN ORDER TO GUARANTEE A FULLY FUNCTIONAL SYSTEM.

D. CONTRACTOR SHALL IDENTIFY THE TYPE OF EACH PNEUMATIC THERMOSTAT (i.e. DIRECT, REVERSE-ACTING, OTHER) AND REPLACE WITH THE CORRECT TYPE WIRELESS PNEUMATIC THERMOSTAT (WPT).

E. REFER TO ELECTRICAL PLANS FOR ADDITIONAL INFORMATION.



FOR CONSTRUCTION

FULLY SPRINKLERED

Bid Issue	03-30-15	<b>CONSULTANTS:</b>		<b>ARCHITECT/ENGINEER:</b>  FREDRICK, FREDRICK & HELLER ENGINEERS, INC. 672 EAST ROYALTON ROAD BROADVIEW HTS., OHIO 44147 TEL: (440) 546-9888 FAX: (440) 546-9899	Drawing Title <b>PARTIAL FIRST FLOOR PLANS - AREA A</b>	Project Title <b>CONVERT PNEUMATIC VAV BOXES TO DDC CONTROL</b>	Project Number 541-15-202	<b>Office of Facilities Management</b>  Department of Veterans Affairs	
					Location <b>VAMC - WADE PARK</b>	Building Number 1			
					Date 03-30-15	Checked LDH	Drawn LDH		Drawing Number <b>1-ME4A</b>
									Dwg. of
Revisions:	Date				Approved: Project Director				